



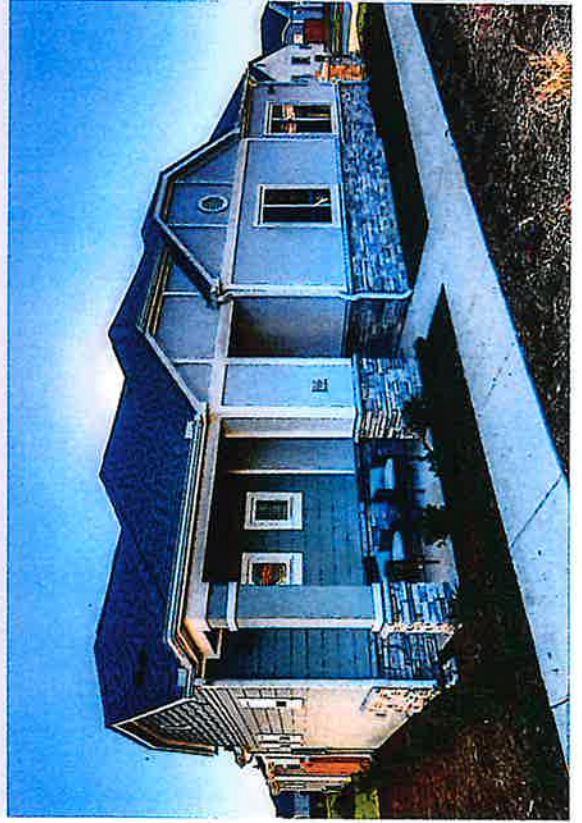
# AVILLA

**NEX**metro  
Communities

# AVILLA

## THE AVILLA DIFFERENCE:

- Single story, detached cottage style homes
- Maintenance free living
- Professional Onsite Management
- Single Family style living with neighborhood amenities
- Private Backyards
- Extensive resident background and income screening.



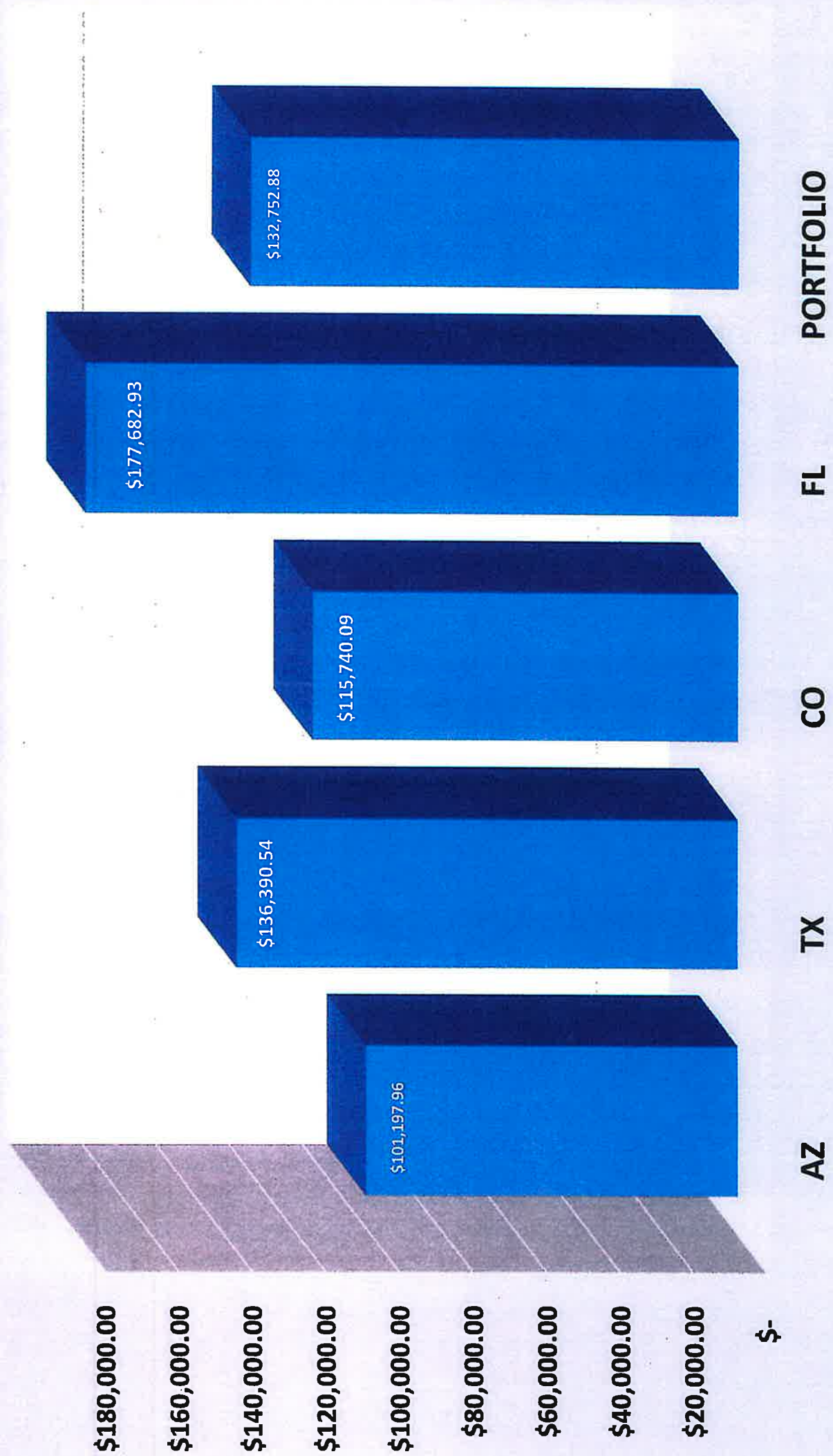
# AVILLA

- Avilla residents are **renters by choice** – many have the financial means to buy a home, but choose not to at this point in their lives.
- **Majority of residents** are Professional Millennials, Mid-Life Singles, Dual-Income Couples and Empty Nesters.
- **Age:** 58% are 35+, 23% are 55+
- **Income:** Average Household Income \$132,000+
- **Minor Occupants:** Only 20% of households have children.



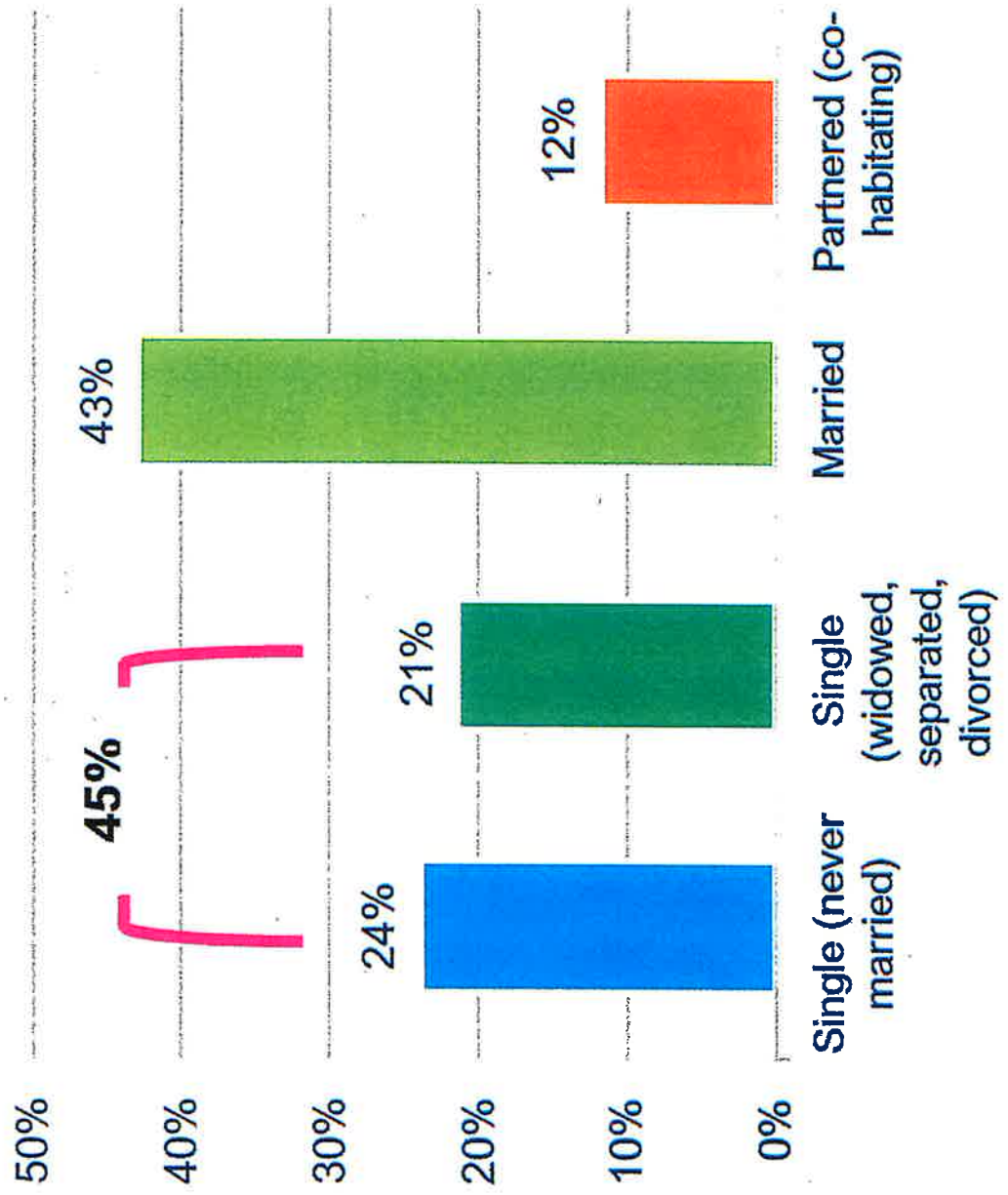


## 2022 RESIDENT AVERAGE HOUSEHOLD INCOME

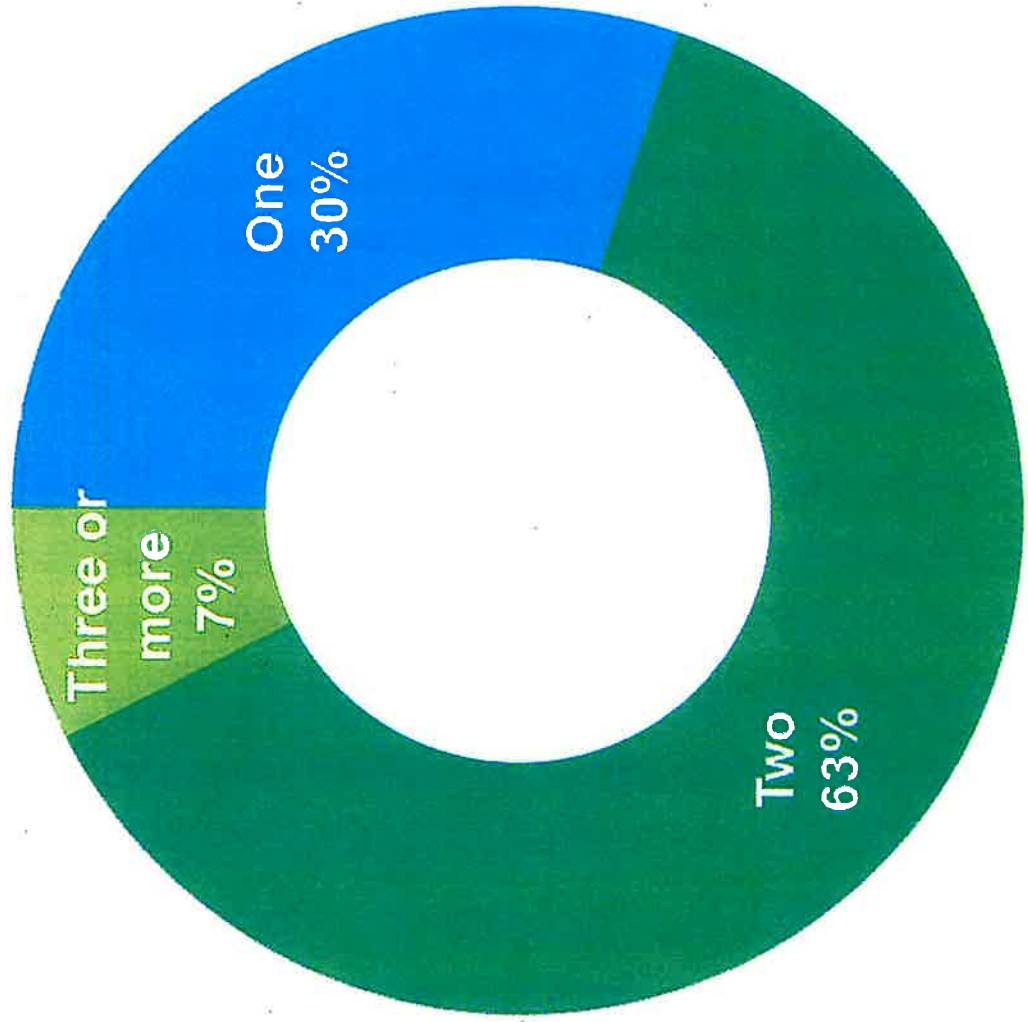


## MARTIAL STATUS & ADULTS IN HOUSEHOLD

### Marital Status

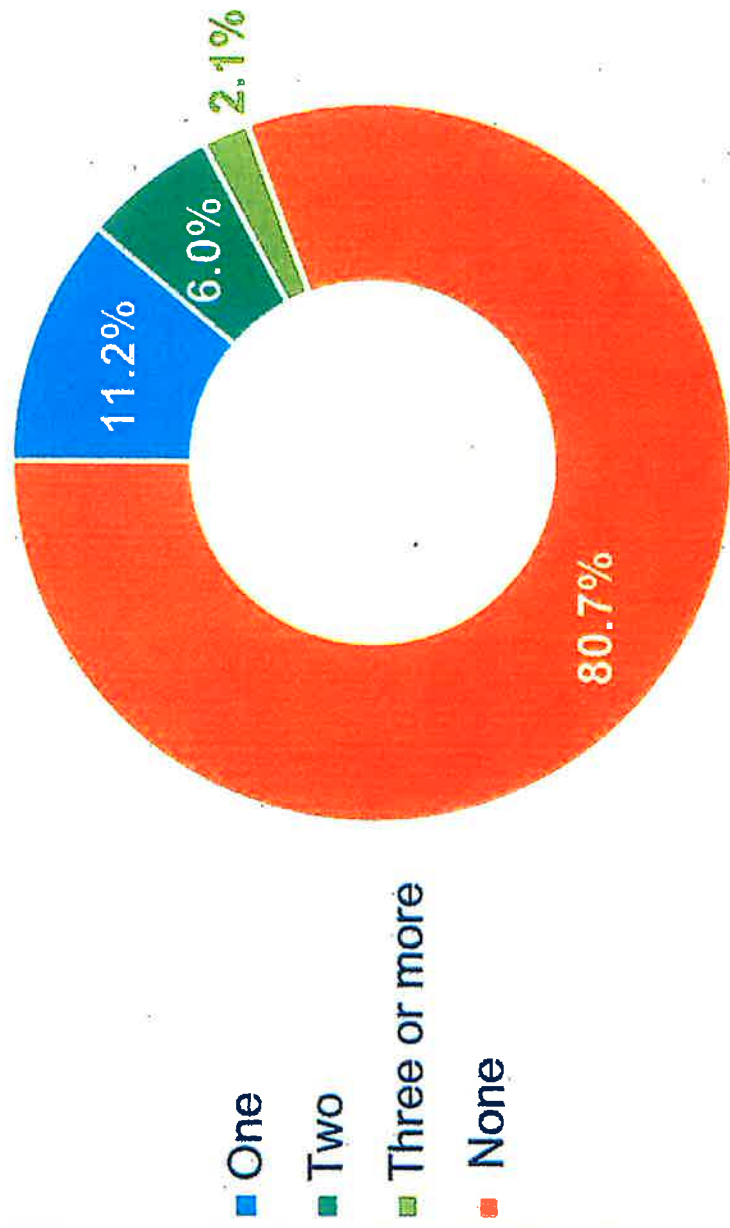


### Number of Adults in Household



## CHILDREN IN AVILLA HOUSEHOLDS

Number of Children





## CONTACT INFORMATION

Jason Flory  
 Managing Director | Atlanta Region  
**NexMetro Communities**  
 O | 469.546.9431  
 C | 972.795.0039  
[nexmetro.com](http://nexmetro.com) | [avillahomes.com](http://avillahomes.com)

Sean Rust  
 Sr. Development Manager | Atlanta Region  
**NexMetro Communities**  
 C | 813.819.1293  
[nexmetro.com](http://nexmetro.com) | [avillahomes.com](http://avillahomes.com)

[jason@nexmetro.com](mailto:jason@nexmetro.com)

[avillahomes.com](http://avillahomes.com)

[sean@nexmetro.com](mailto:sean@nexmetro.com)