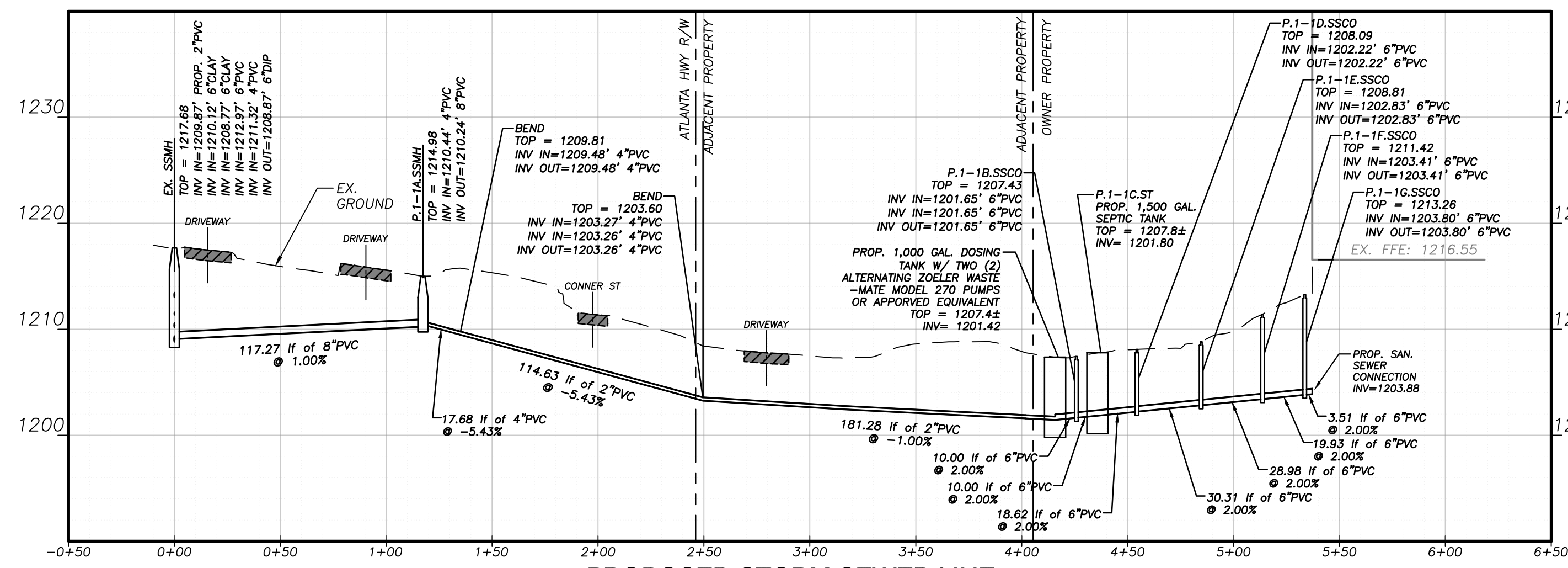
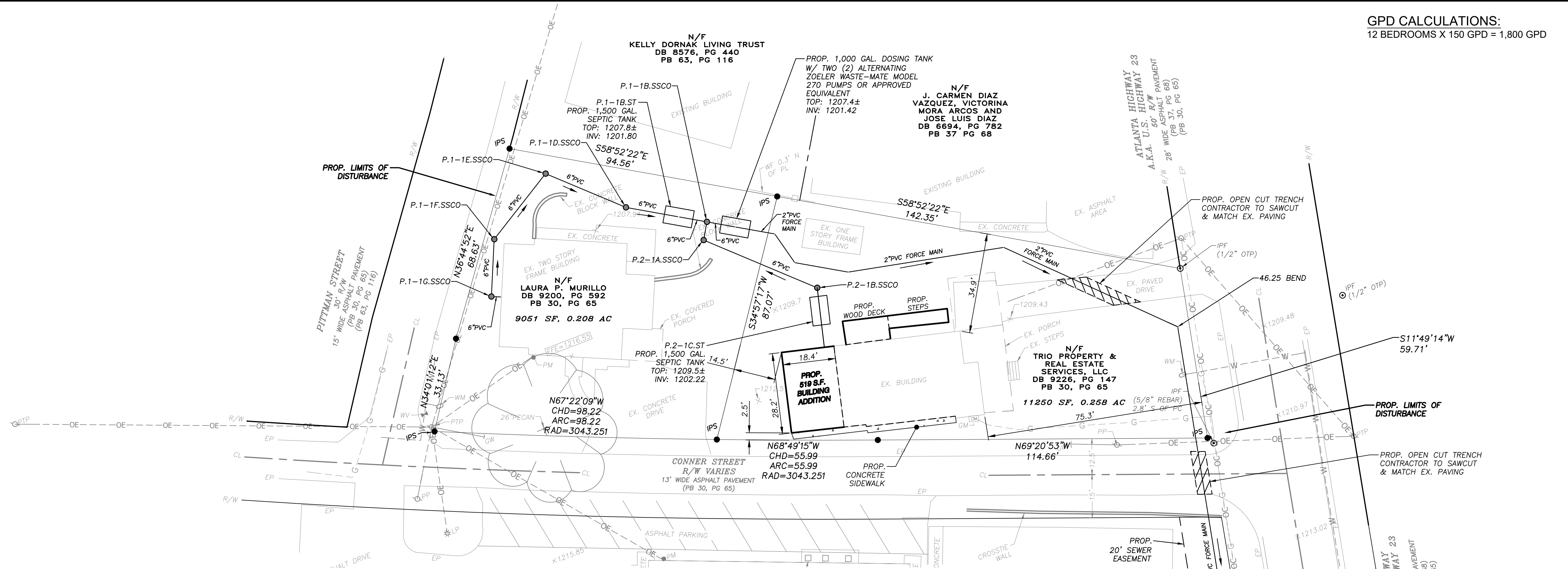
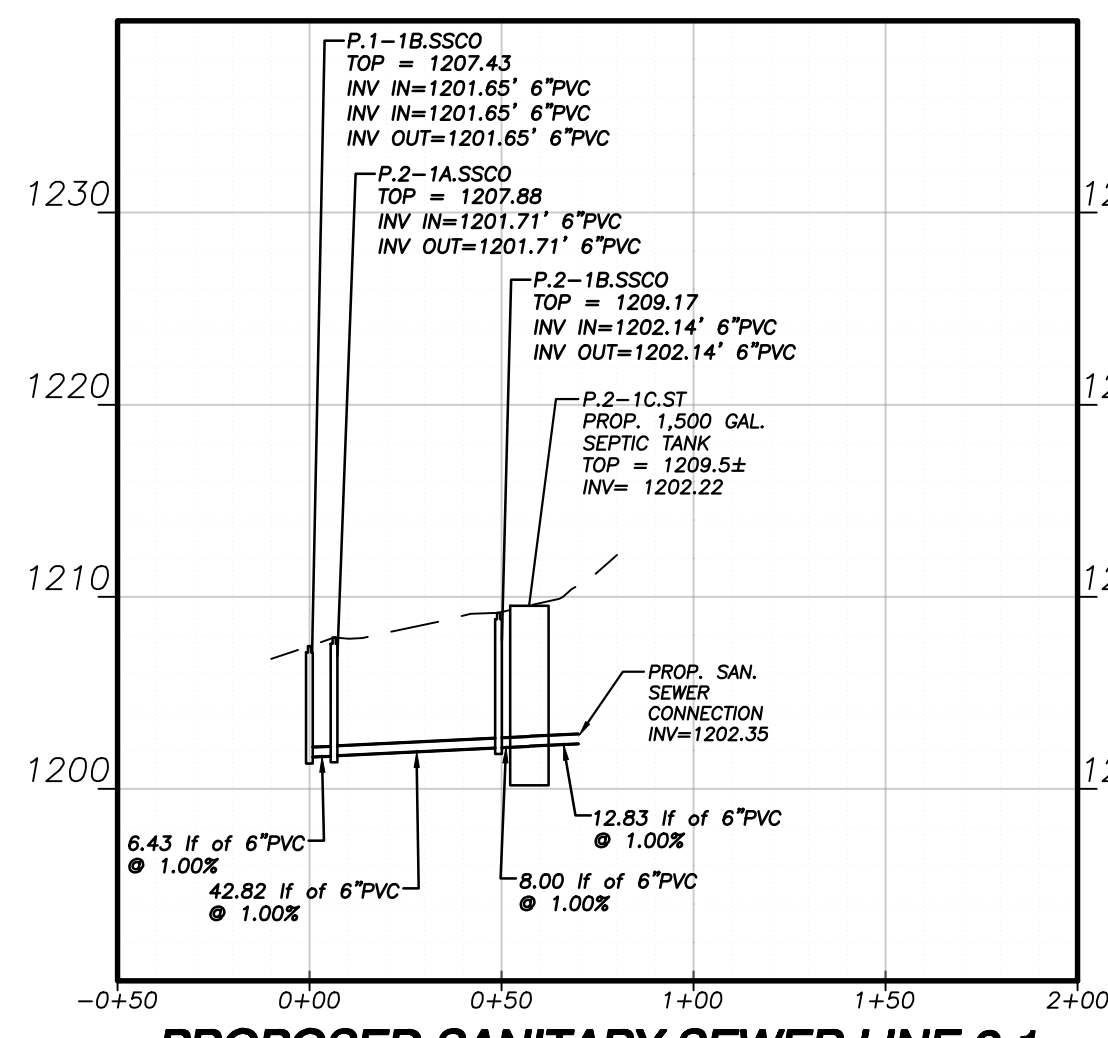


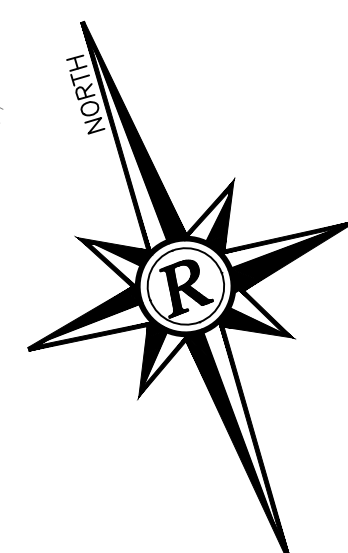
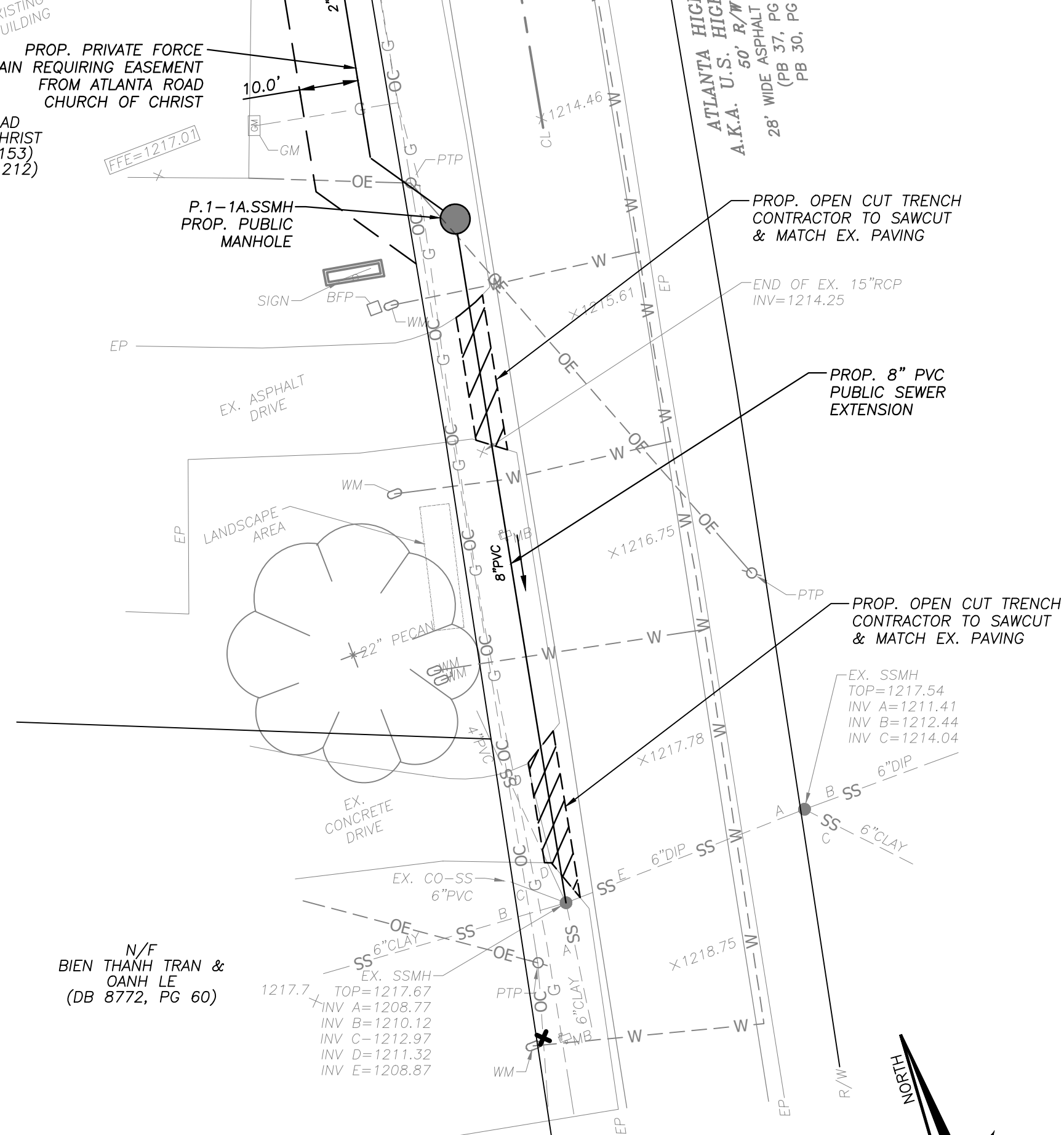
GPD CALCULATIONS:
12 BEDROOMS X 150 GPD = 1,800 GPD



PROPOSED STORM SEWER LINE 1-1
SCALE: 1"=50' HORIZONTAL, 1"=10' VERTICAL



PROPOSED SANITARY SEWER LINE 2-1
SCALE: 1"=50' HORIZONTAL, 1"=10' VERTICAL



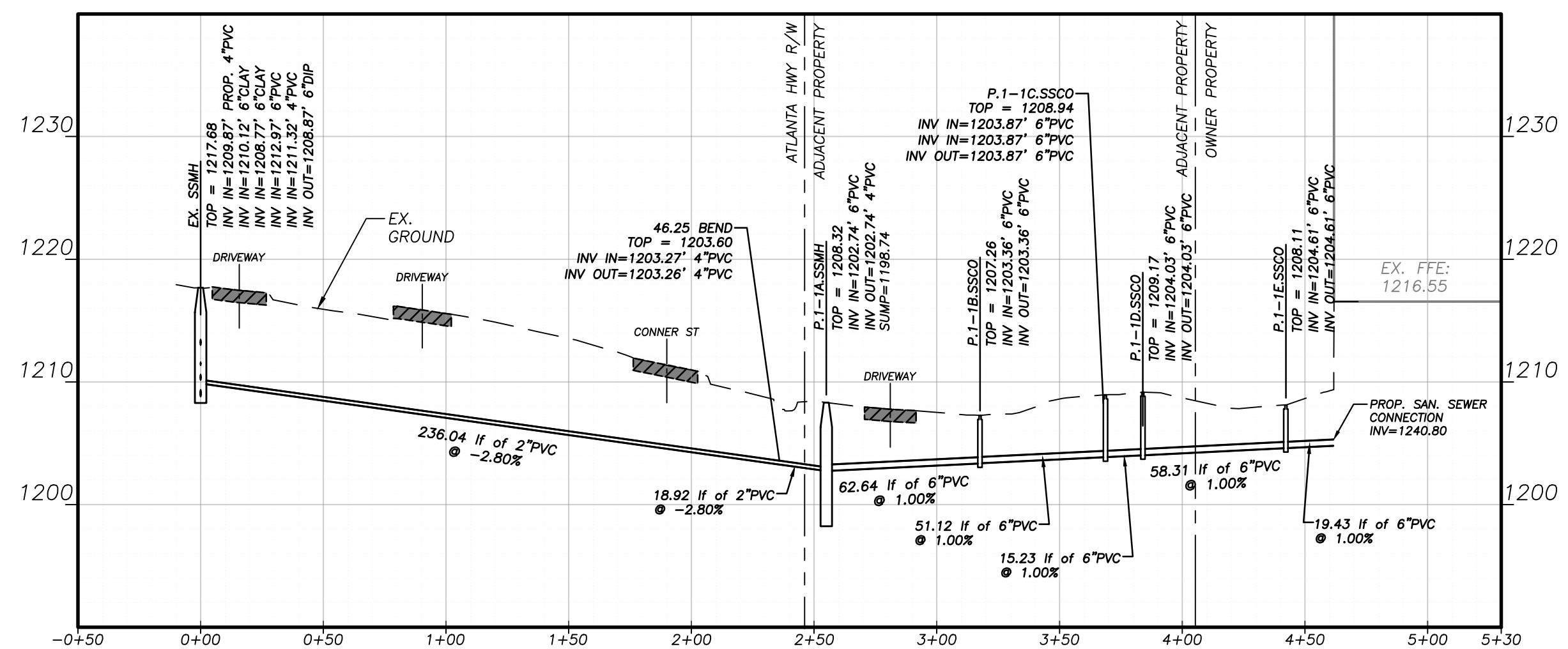
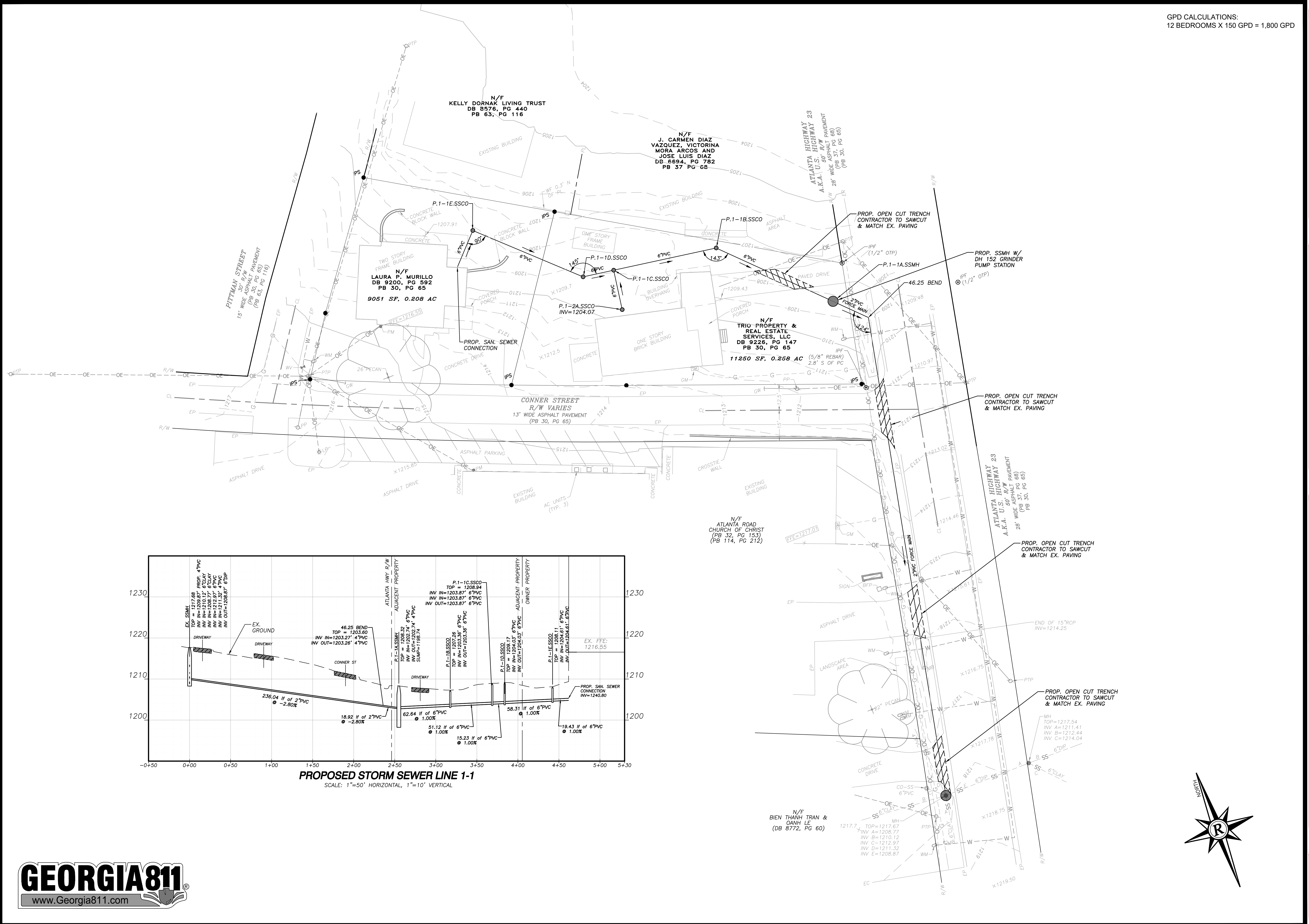
NO.	DATE	DESCRIPTION

ANY CHANGES OR ALTERATIONS MADE TO THIS DRAWING MUST BE APPROVED BY THE WRITTEN APPROVAL OF ROCHESTER & ASSOCIATES, LLC. THE ORIGINAL DRAWINGS ARE KEPT ON FILE FOR VERIFICATION OF ANY CHANGES.

GRAPHIC SCALE
1" = 0'
20'
40'

07.25.23
SHEET 1 OF 1
DATE: 07.25.23
SCALE: 1"=20'
JOB NO.: 220333.MUR
DWG NO.: 220333-01.dwg
DRAWN BY: DCB

GPD CALCULATIONS:
12 BEDROOMS X 150 GPD = 1,800 GPD



PROPOSED STORM SEWER LINE 1-1
SCALE: 1"=50' HORIZONTAL, 1"=10' VERTICAL

Rochester **ECOM**
Rochester & Associates, LLC
425 Oak St NW, Gainesville, GA 30601
770.718.0600 | www.rochester-assoc.com

FOR:
PLAN & PROFILE
962 CONNER STREET
SEWER CONNECTION
LAND LOT 169
9TH DISTRICT
CITY OF GAINESVILLE, GA

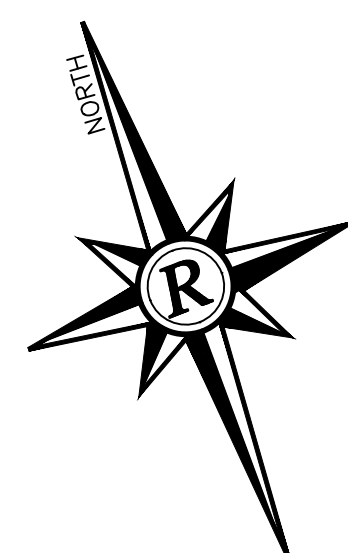
NO.	DATE	DESCRIPTION

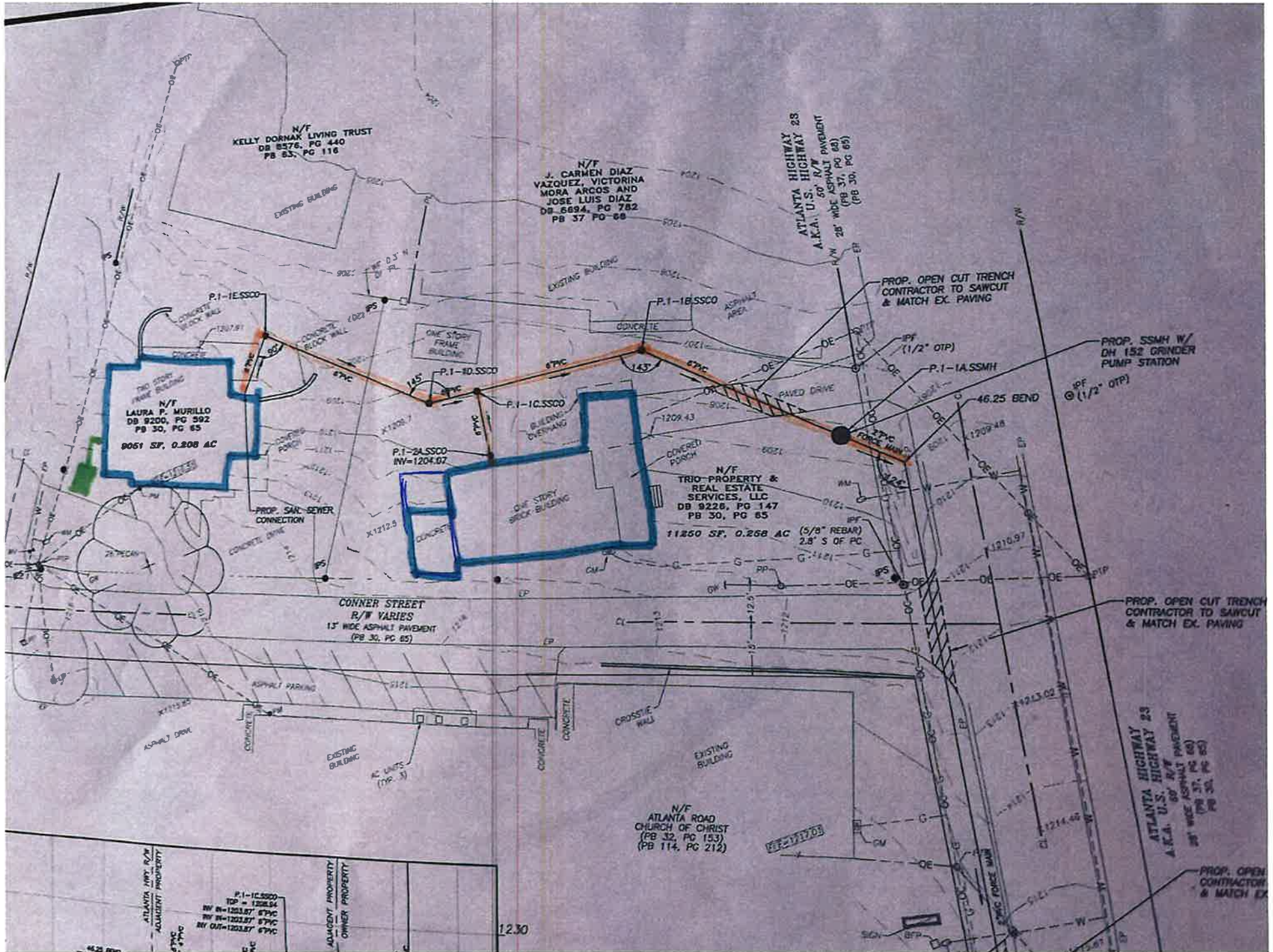
ANY CHANGES OR ALTERATIONS MADE TO THIS DRAWING SHALL BE THE RESPONSIBILITY OF THE CLIENT. THE WRITTEN APPROVAL OF ROCHESTER ECOM MUST BE OBTAINED BEFORE ANY CHANGES TO THE ORIGINAL DRAWINGS ARE KEPT ON FILE FOR VERIFICATION OF ANY CHANGES.

GRAPHIC SCALE
1" = 0' 20' 40'

04.13.23

SHEET
4
OF
9
DATE: 04.13.23
SCALE: 1"=20'
JOB NO. 022333.MUR
DRAWN BY: DCB





N/F
KELLY DORNAX LIVING TRUST
DB 8576, PG 440
PB 83, PG 116

N/F
J. CARMEN DIAZ
VAZQUEZ, VICTORINA
MORA ARCOS AND
JOSE LUIS DIAZ
DB 6694, PG 782
PB 37 FO 68

ATLANTA HIGHWAY 28
A.K.A. U.S. R/W
28' WIDE ASPHALT PAVEMENT
(PB 39, PG 65)

N/F
LAURA P. MURILLO
DB 9200, PG 592
PB 30, PG 65
9051 SF, 0.208 AC

N/F
TRIO-PROPERTY &
REAL ESTATE
SERVICES, LLC
DB 9226, PG 147
PB 30, PG 65
11250 SF, 0.268 AC
(5/8" REBAR
2.8' S OF PC)

CONNER STREET
R/W VARIES
13' WIDE ASPHALT PAVEMENT
(PB 30, PG 65)

N/F
ATLANTA ROAD
CHURCH OF CHRIST
(PB 32, PG 153)
(PB 114, PG 212)

ATLANTA HIGHWAY 28
A.K.A. U.S. R/W
28' WIDE ASPHALT PAVEMENT
(PB 39, PG 65)

P.1-1C.SS00
TOP = 1208.94
BY N=1203.87 6\"/>

ADJACENT PROPERTY
OWNER PROPERTY

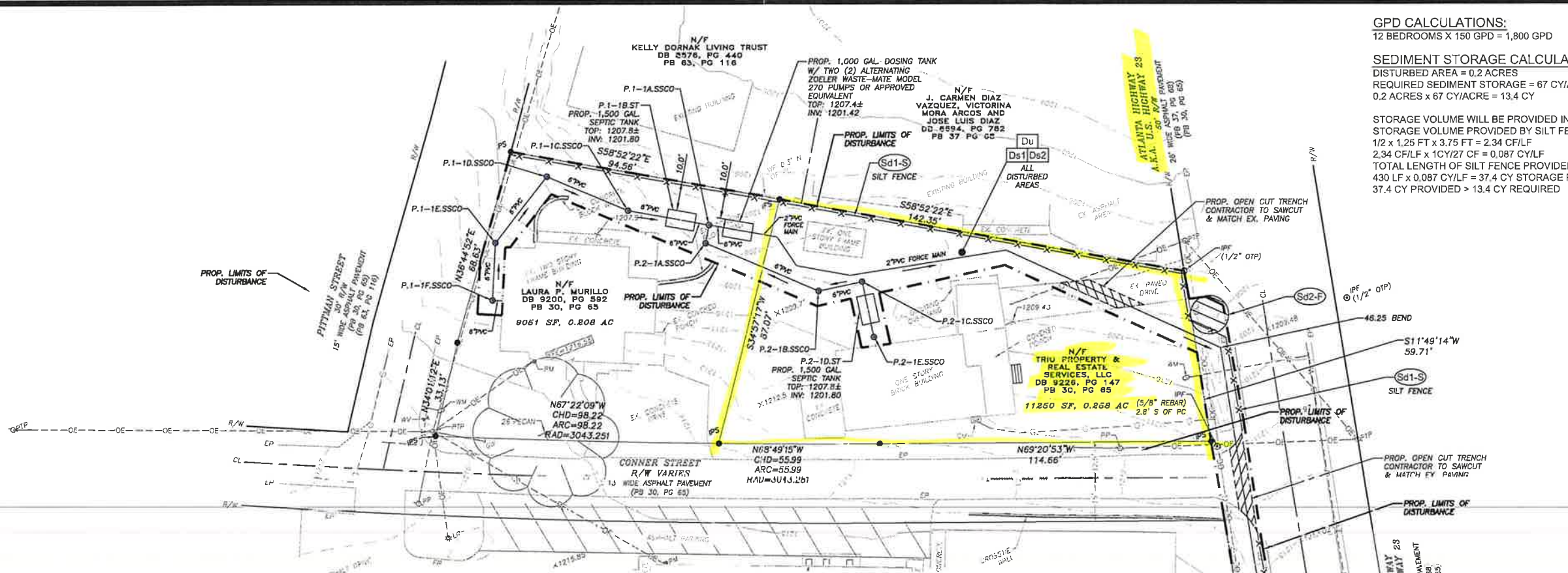
12.30

PROP. OPEN CUT TRENCH
CONTRACTOR TO SAWCUT
& MATCH EX. PAVING

PROP. SSMH W/
DH 152 GRINDER
PUMP STATION

PROP. OPEN CUT TRENCH
CONTRACTOR TO SAWCUT
& MATCH EX. PAVING

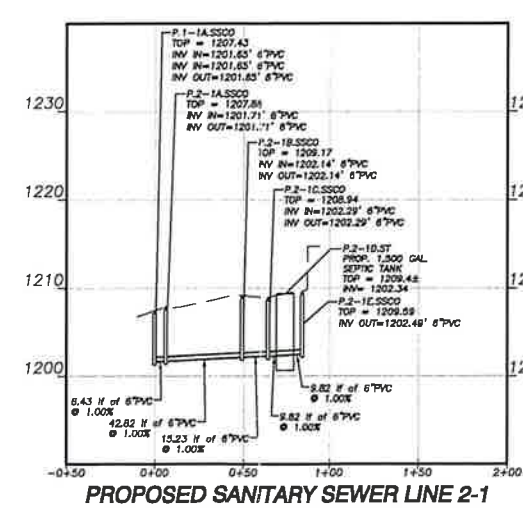
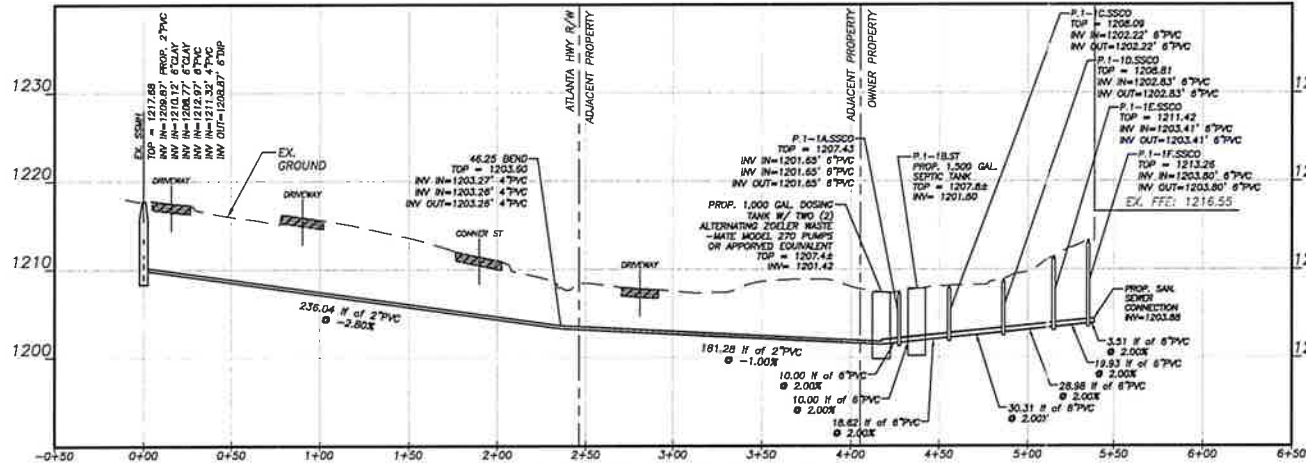
PROP. OPEN
CONTRACTOR
& MATCH EX



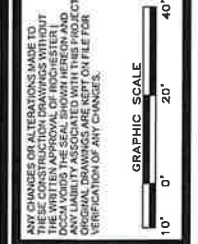
GPD CALCULATIONS:
 12 BEDROOMS X 150 GPD = 1,800 GPD

SEDIMENT STORAGE CALCULATIONS:
 DISTURBED AREA = 0.2 ACRES
 REQUIRED SEDIMENT STORAGE = 67 CY/ACRE
 0.2 ACRES X 67 CY/ACRE = 13.4 CY

STORAGE VOLUME WILL BE PROVIDED IN SILT FENCE
 STORAGE VOLUME PROVIDED BY SILT FENCE:
 1/2 X 1.25 FT X 3.75 FT = 2.34 CF/LF
 2.34 CF/LF X 1CY/27 CF = 0.087 CY/LF
 TOTAL LENGTH OF SILT FENCE PROVIDED = 430 LF
 430 LF X 0.087 CY/LF = 37.4 CY STORAGE PROVIDED
 37.4 CY PROVIDED > 13.4 CY REQUIRED



NO.	DATE	DESCRIPTION



04.13.23