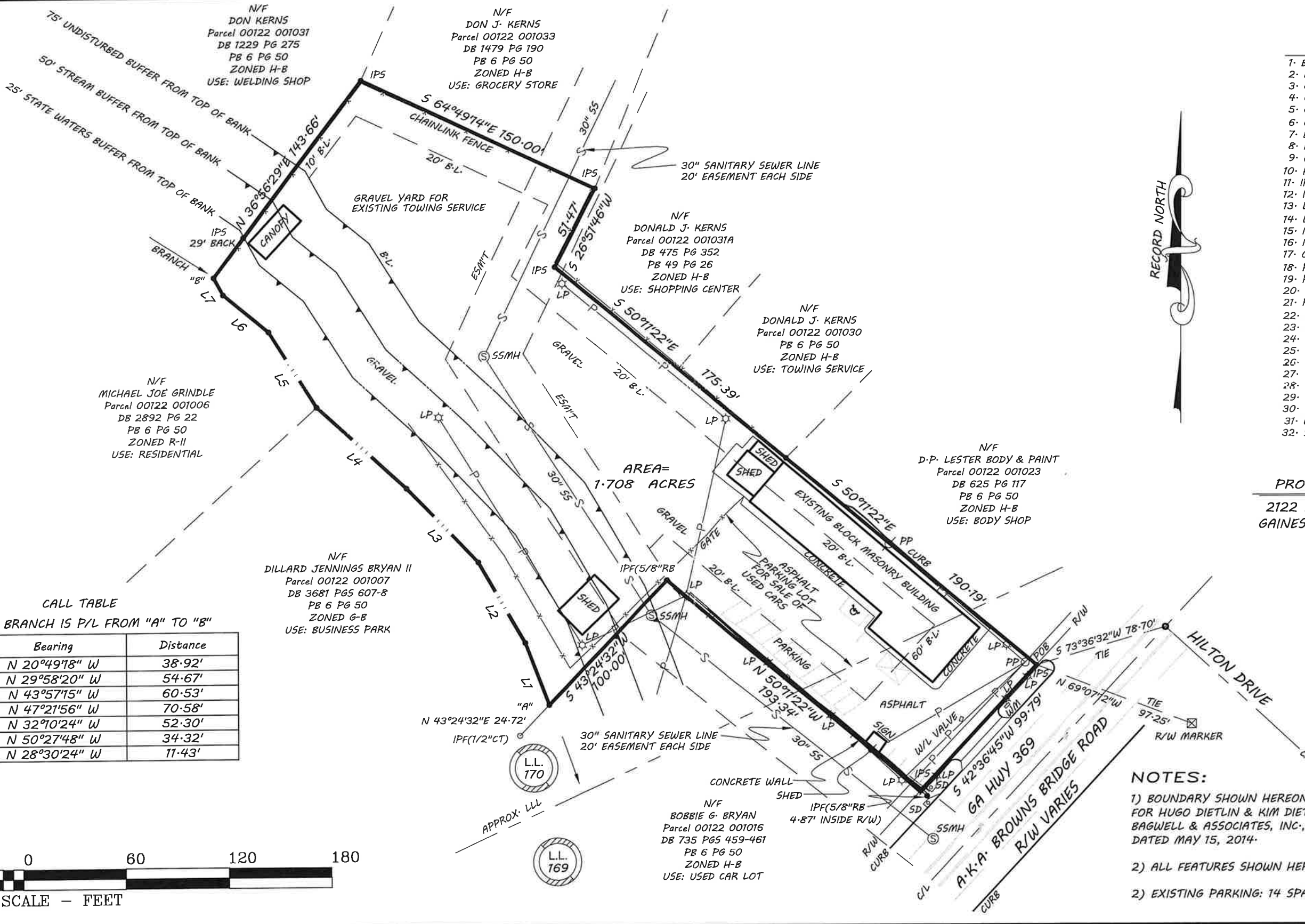


LEGEND

- 1- BC = BACK OF CURB
- 2- BSL = BUILDING SETBACK LINE
- 3- C.L. = CENTER LINE
- 4- CMF = CONC. MONUMENT FOUND
- 5- CMP = CORRUGATED METAL PIPE
- 6- CT = CRIMP TOP
- 7- EL = ELEVATION (FT)
- 8- EP = EDGE OF PAVEMENT
- 9- FFEL = FINISHED FLOOR ELEV.
- 10- FH = FIRE HYDRANT
- 11- IPF = IRON PIN FOUND
- 12- IPS = IRON PIN SET NO.4 REBAR
- 13- LL = LAND LOT
- 14- LLL = LAND LOT LINE
- 15- N/F = NOW OR FORMERLY
- 16- NTS = NOT TO SCALE
- 17- OT = OPEN TOP
- 18- P.L. = PROPERTY LINE
- 19- POB = POINT OF BEGINNING
- 20- PP = POWER POLE
- 21- R/B = REBAR
- 22- RCP = REINFORCED CONC. PIPE
- 23- R/W = RIGHT OF WAY
- 24- -G- = GAS LINE
- 25- -P- = POWER LINE
- 26- -S- = SEWER LINE
- 27- -T- = TELEPHONE LINE
- 28- -W- = WATER LINE
- 29- -X- = CHAIN LINK FENCE
- 30- [Symbol] = STREET ADDRESS
- 31- LP = LIGHT POLE
- 32- SD = STORM DRAIN

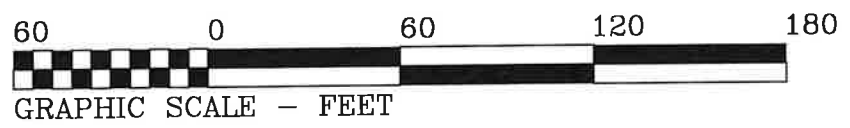
PROPERTY ADDRESS
 2122 BROWNS BRIDGE ROAD
 GAINESVILLE, GEORGIA 30501
 ZONED H-B



AREA = 1.708 ACRES

CALL TABLE
 C/L OF BRANCH IS P/L FROM "A" TO "B"

| Course | Bearing | Distance |
|--------|---------------|----------|
| L1 | N 20°49'18" W | 38.92' |
| L2 | N 29°58'20" W | 54.67' |
| L3 | N 43°57'15" W | 60.53' |
| L4 | N 47°21'56" W | 70.58' |
| L5 | N 32°10'24" W | 52.30' |
| L6 | N 50°27'48" W | 34.32' |
| L7 | N 28°30'24" W | 11.43' |



- NOTES:**
- 1) BOUNDARY SHOWN HEREON WAS TAKEN FROM A SURVEY FOR HUGO DIETLIN & KIM DIETLIN, PREPARED BY G.W. BAGWELL & ASSOCIATES, INC., GREGG W. BAGWELL, RLS 2885, DATED MAY 15, 2014.
 - 2) ALL FEATURES SHOWN HEREON ARE EXISTING.
 - 2) EXISTING PARKING: 14 SPACES AND 1 HANDICAP SPACE.

| | | | | |
|-----------------|---------------------------------|--|-----------------|--|
| 1 of 1 | DATE: 7-21-2023 | DRAWN BY: SA | CHECKED BY: DRJ | SITE PLAN FOR: CHABELITA USED AUTO SALES LOTS 48 & 49, PART LOTS 104, 105 & 106 OF THE S.C. MOON - FRED STRINGER S/D LOCATED IN LAND LOTS 169 & 170, 9th LAND DISTRICT, HALL COUNTY, GEORGIA |
| | DATE OF FIELD SURVEY: 7-20-2023 | JOB NO. 23-5000-G261 | | |
| SCALE: 1" = 60' | | Atlas Technical Consultants, LLC Engineering • Planning • Landscape Architecture • Land Acquisition • Surveying LSF001323, EXP: 6/30/2024 930 Interstate Ridge, Suite F Gainesville, Georgia 30501 PHONE: (770)532-4021 FAX: (770)532-4023 | | |