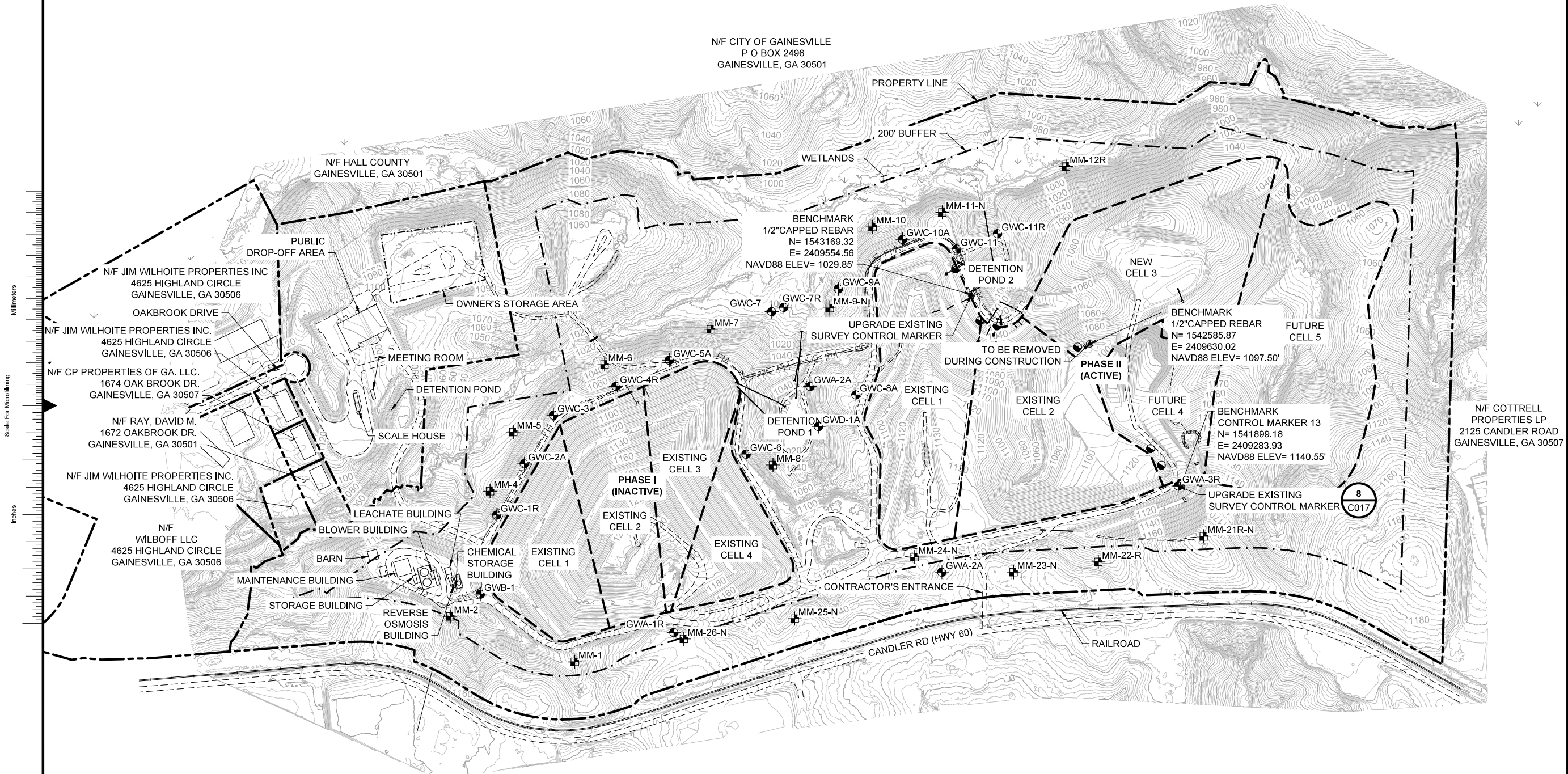


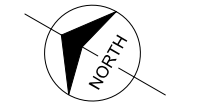
no.	date	by	ckd	description
0	8/28/23	MLA	BSW	ISSUED FOR BID

- NOTES:
- EXISTING TOPOGRAPHY BASED ON SURVEY COMPLETED BY ROCHESTER & ASSOCIATES, INC. DATED OCTOBER 2019 AND SUPPLEMENTAL SURVEY OF CELL 3 AND 4 AREA COMPLETED BY MAXWELL-REDDICK AND ASSOCIATES DATED APRIL 2023.
  - HORIZONTAL DATUM BASED ON NAD 83 GEORGIA STATE PLANES, WEST ZONE, VERTICAL DATUM BASED ON NAVD 88.
  - CONTOUR INTERVAL IS TWO FEET.
  - SITE TOPOGRAPHY MAY VARY DUE TO OWNER'S CONSTRUCTION, DAILY COVER MATERIAL EXCAVATION, STOCKPILING, AND WASTE DISPOSAL OPERATIONS.



Scale For Microfilming  
Millimeters

Inches



0 250' 500'  
SCALE IN FEET



4004 SUMMIT BLVD NE, SUITE 1200  
ATLANTA, GA 30319  
770-587-4776  
Burns & McDonnell Engineering Co., Inc.  
COA: PEF00100 (EXP DATE: 6/30/2024)

date	AUGUST 28, 2023	detailed	M. AULT
designed	M. AULT	checked	B. WELDON



CANDLER ROAD LANDFILL  
PERMIT #: 069-15D(MSWL)  
HALL COUNTY, GEORGIA

PHASE II CELL 3 CONSTRUCTION  
EXISTING CONDITIONS

project	152292	contract	PO # 435114
drawing	<b>G004</b>	rev.	<b>0</b>
sheet	4	of	39 sheets
file	G004 Existing Conditions.dwg		

