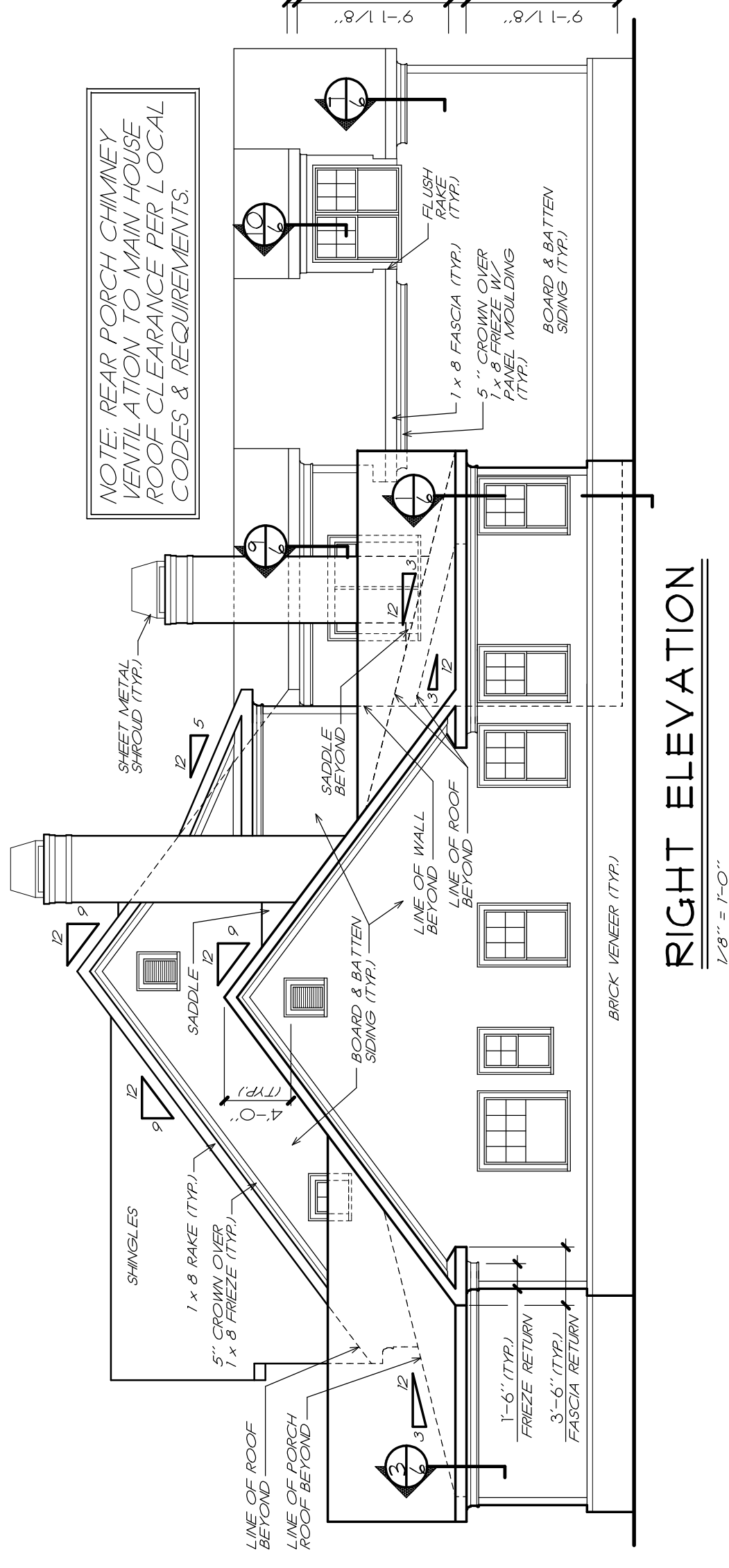
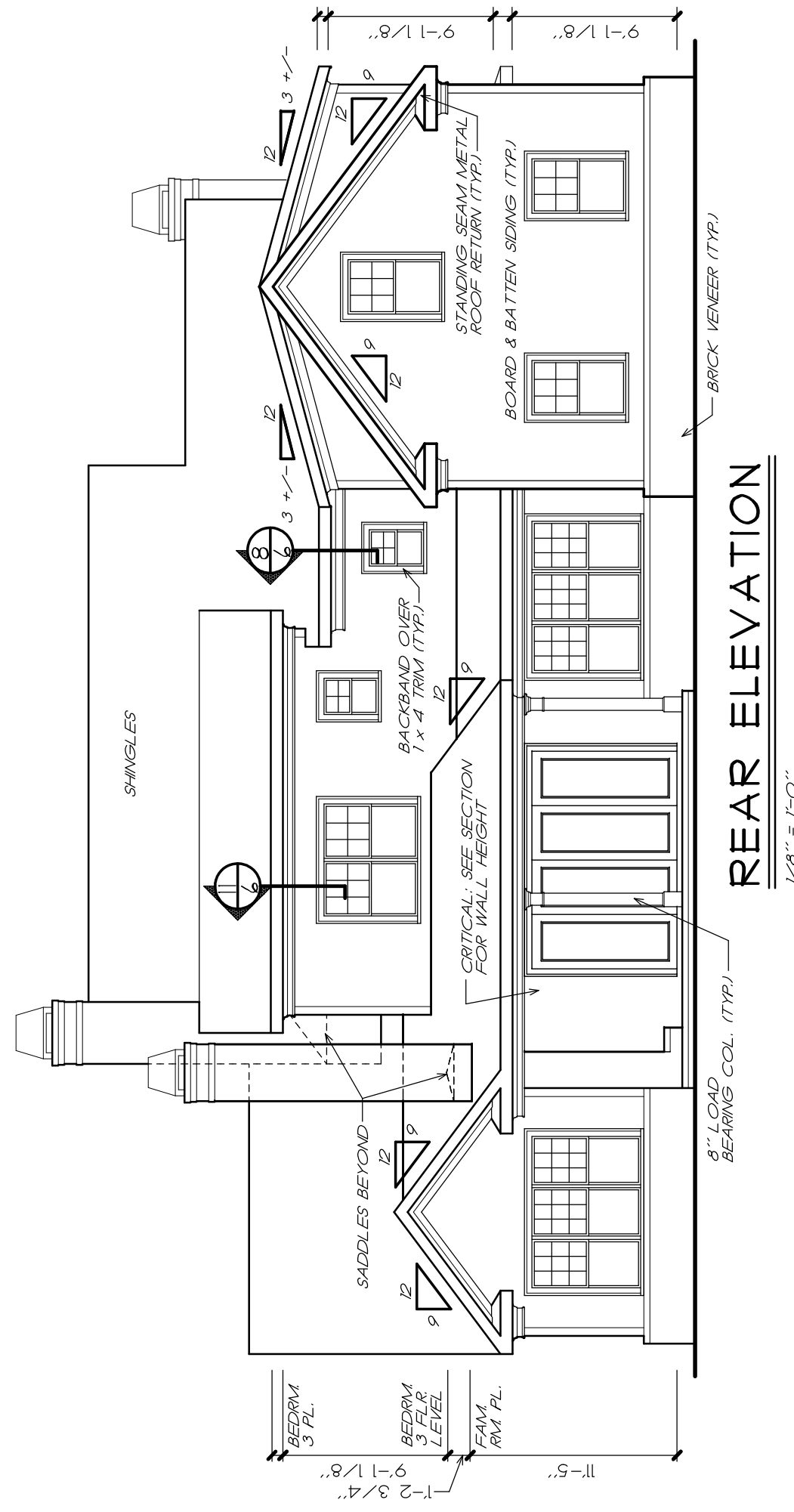


**LEFT ELEVATION**  
1/8" = 1'-0"

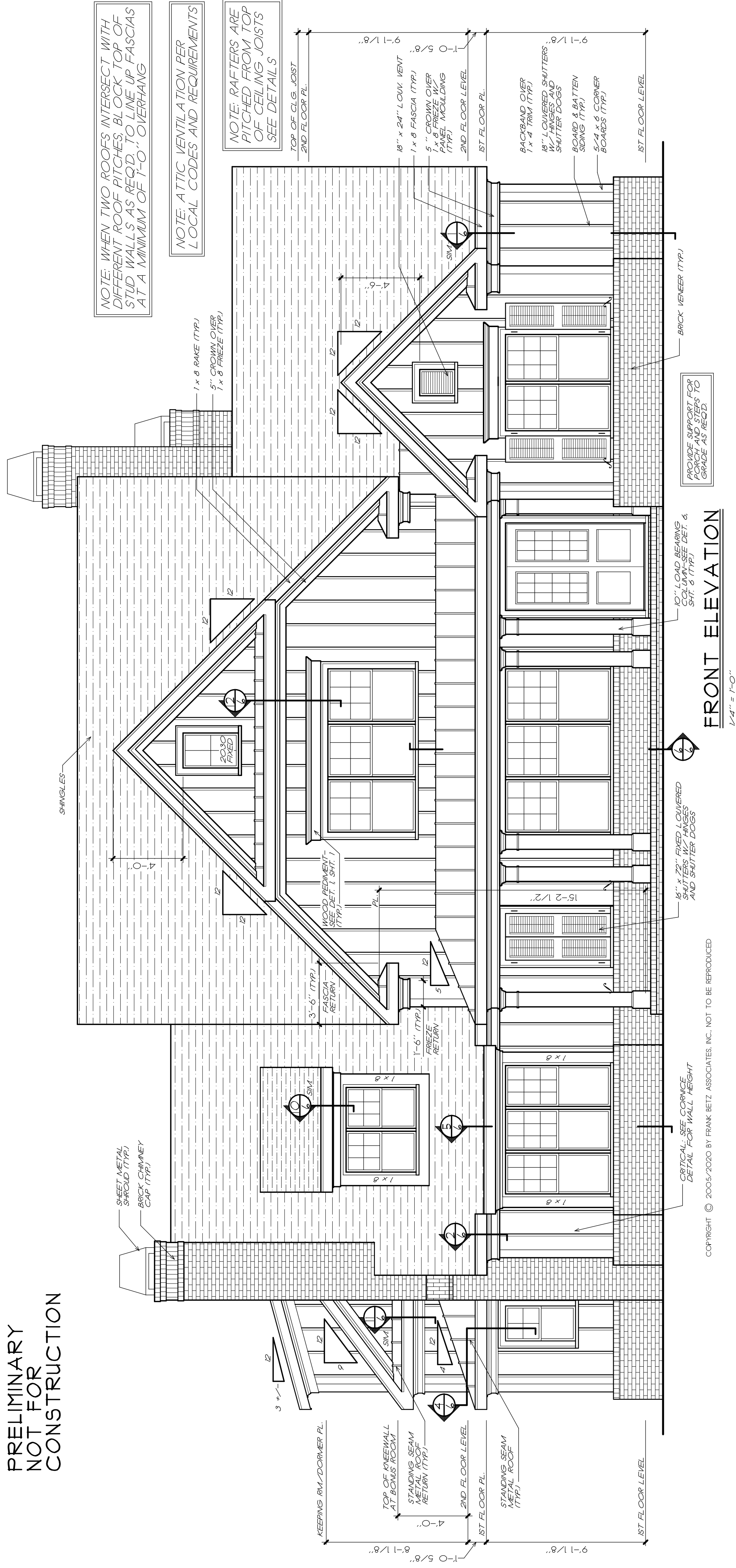


**RIGHT ELEVATION**  
1/8" = 1'-0"

**PRELIMINARY  
NOT FOR  
CONSTRUCTION**

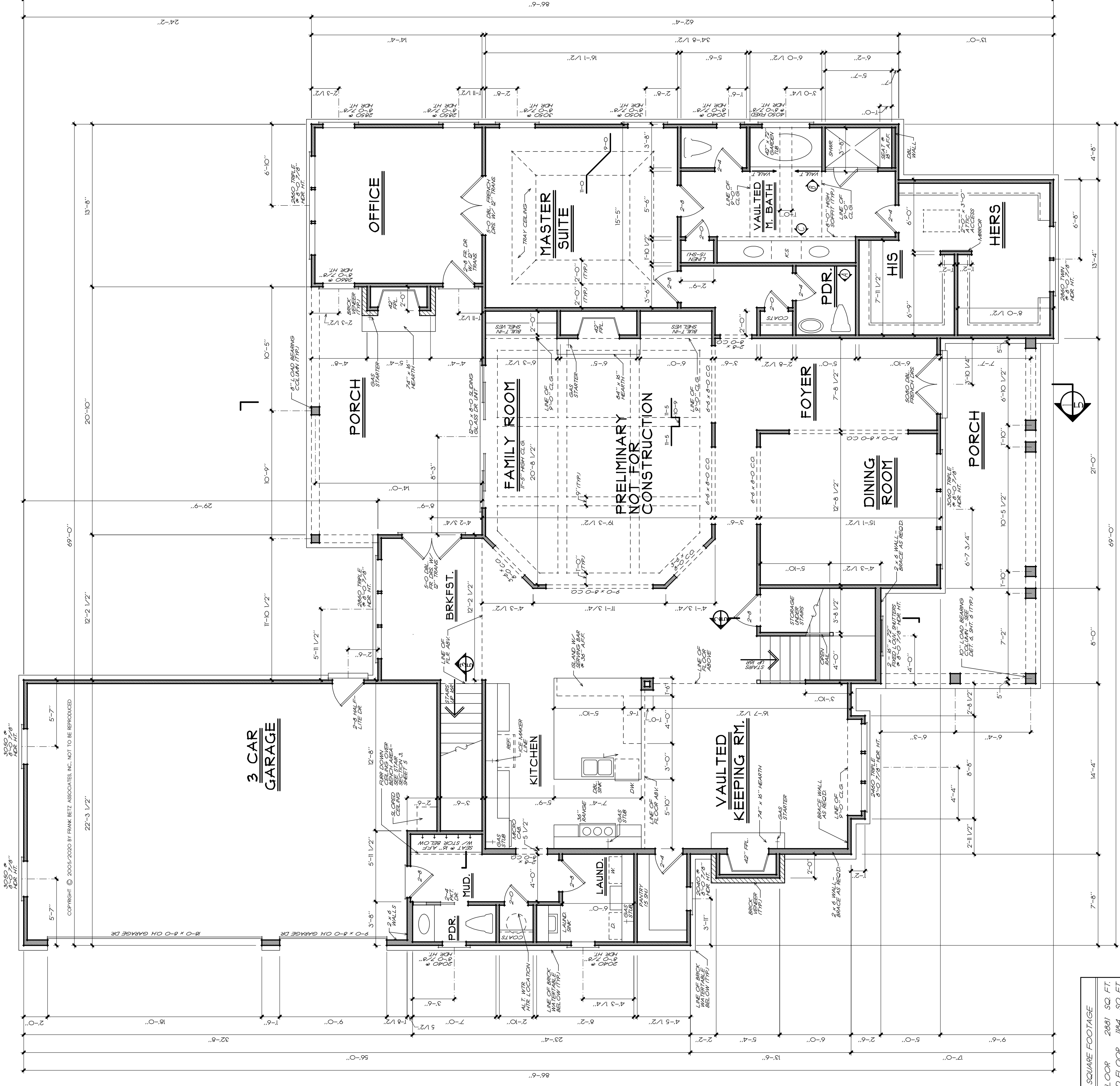


**REAR ELEVATION**  
1/8" = 1'-0"



**FRONT ELEVATION**  
1/4" = 1'-0"

COPYRIGHT © 2005/2020 BY FRANK BETZ ASSOCIATES, INC. NOT TO BE REPRODUCED

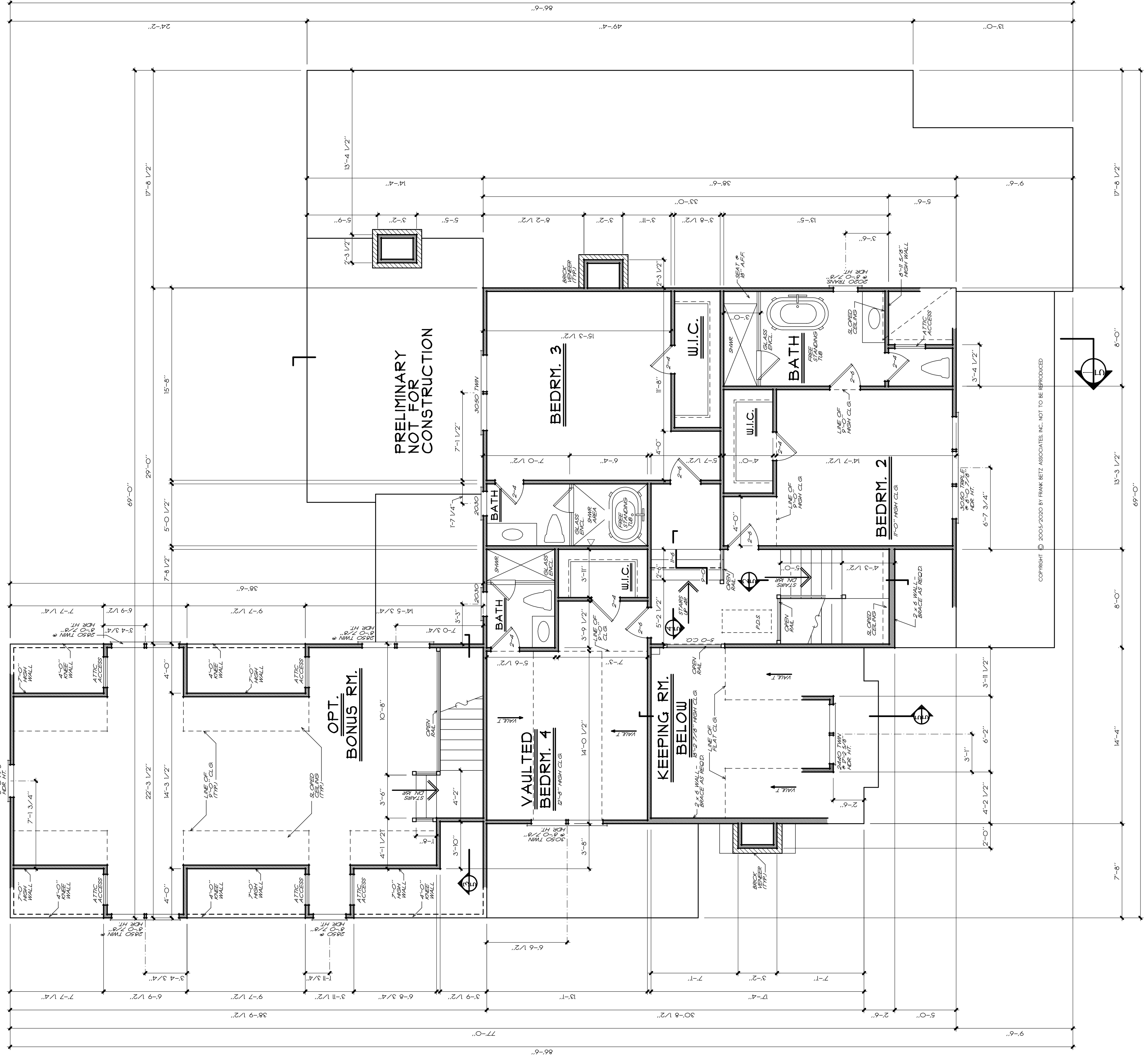


**FIRST FLOOR PLAN**  
3/08 1710

NOTE: ALL WALLS ARE 4" UNLESS OTHERWISE NOTED

SQUARE FOOTAGE	
FIRST FLOOR	2881 SQ. FT.
SECOND FLOOR	1864 SQ. FT.
TOTAL	4745 SQ. FT.
CFT. ROOMS RM	665 SQ. FT.
TOTAL	4230 SQ. FT.

ALL WALLS SHOWN ARE PERMITTED TO BE CONSTRUCTED WITH 1/2" GYPSUM BOARD TO CARRY LOAD. WALLS ARE TO BE CONSTRUCTED WITH 1/2" GYPSUM BOARD TO CARRY LOAD. WALLS ARE TO BE CONSTRUCTED WITH 1/2" GYPSUM BOARD TO CARRY LOAD.



COPYRIGHT © 2005-2006 BY FRANK BETZ ASSOCIATES, INC. NOT TO BE REPRODUCED

**SECOND FLOOR PLAN**  
3'-0" = 1'-0"