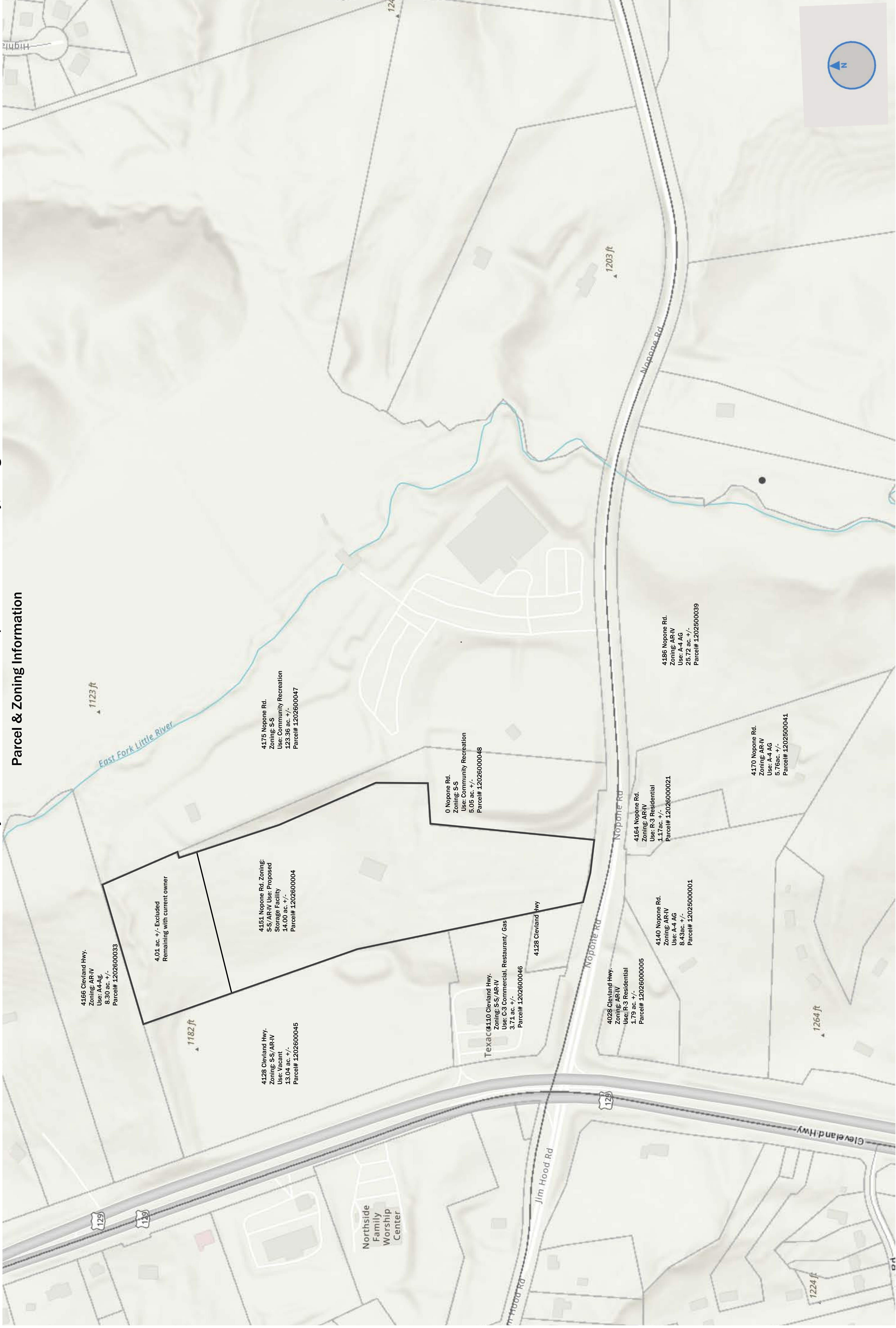
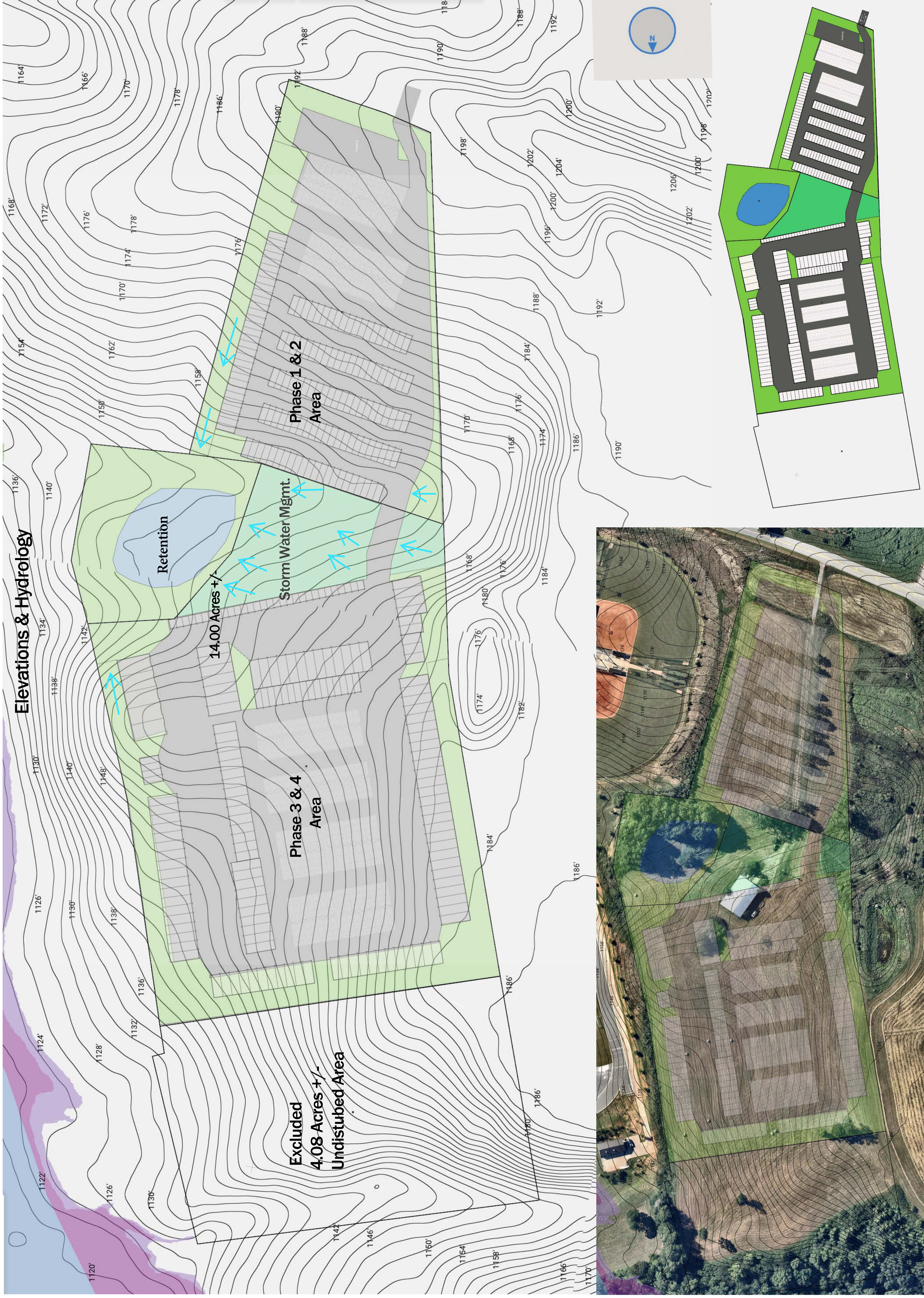


Preliminary Site Plan Evaluation. 4151 Nopone Rd. Hall County, Georgia.
Parcel & Zoning Information

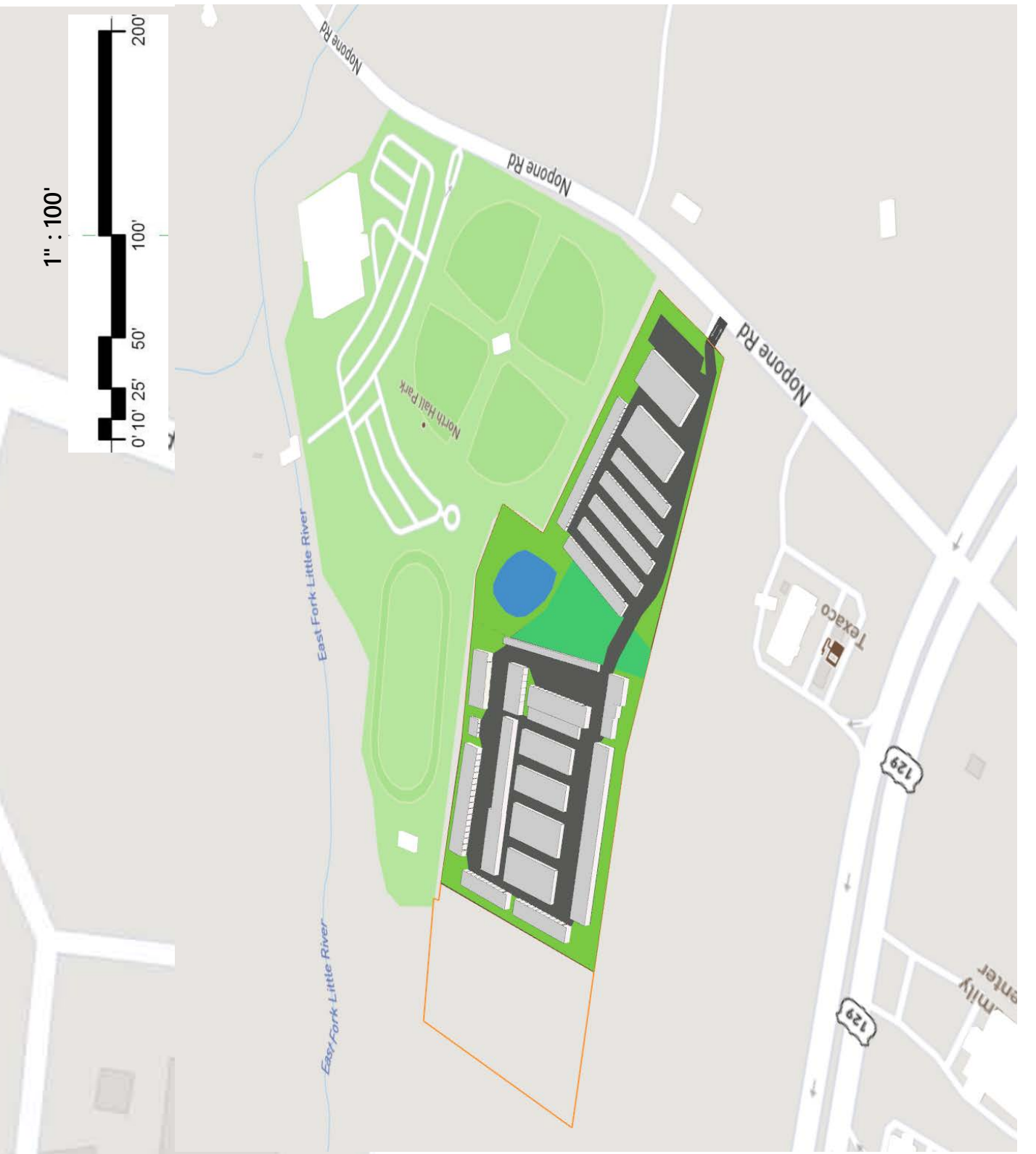
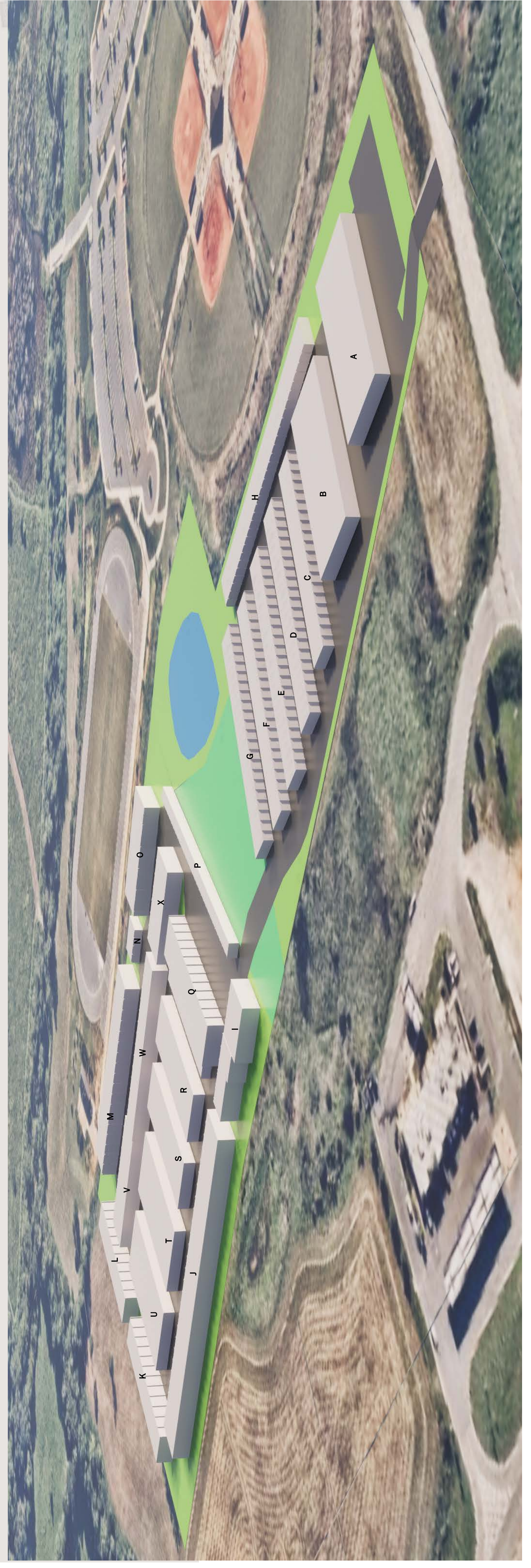


DRAWN BY	RCG
CHECKED BY	
PROJECT NO.	
DATE	04/04/24
SCALE	Not To Scale
NAME	John Hemphill



DRAWN BY	RCG
CHECKED BY	
PROJECT NO.	
DATE	04/04/24
SCALE	Not To Scale
NAME	John Hemphill

Preliminary Site Plan Evaluation. 4151 Nopone Rd. Hall County, Georgia.
Overhead Summary.



DRAWN BY	RCG
CHECKED BY	
PROJECT NO.	
DATE	04/04/24
SCALE	1" = 100'
NAME	John Hemphill

Preliminary Site Plan Evaluation. 4151 Nopone Rd. Hall County, Georgia.

Phase 1 & 2 Building Summary.



Phase 1 & 2 / Build	Dimensions	SF.	Roof	Pitch
Bldg. A	75 x 160 x 9.5 (CC) hybrid	12,000	Gable	¼ : 12
Bldg. B	75 x 160 x 9.5 (CC) hybrid	12,000	Gable	¼ : 12
Bldg. C	30x 190 x 8.5	5,700	Gable	¼ : 12
Bldg. D	30 x 210 x 8.5	6,300	Gable	¼ : 12
Bldg. E	30 x 220 x 8.5	6,600	Gable	¼ : 12
Bldg. F	30 x 220 x 8.5	6,600	Gable	¼ : 12
Bldg. G	30 x 220 x 8.5	6,600	Single	¼ : 12
Bldg. H	30 x 310 x 8.5	9,300	Single	¼ : 12
		65,100		

DRAWN BY	RCG
CHECKED BY	
PROJECT NO.	
DATE	04/05/24
SCALE	1"=50'
NAME	John Hemphill

Preliminary Site Plan Evaluation. 4151 Nopone Rd. Hall County, Georgia.

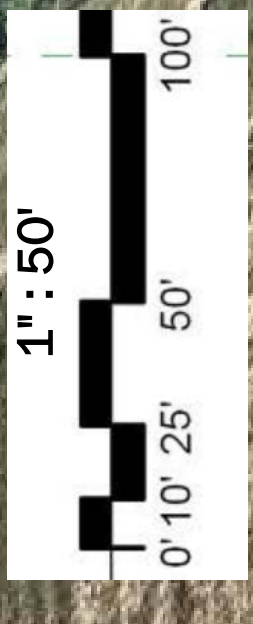
Phase 3 Building Summary.



Excluded
4.08
Acres

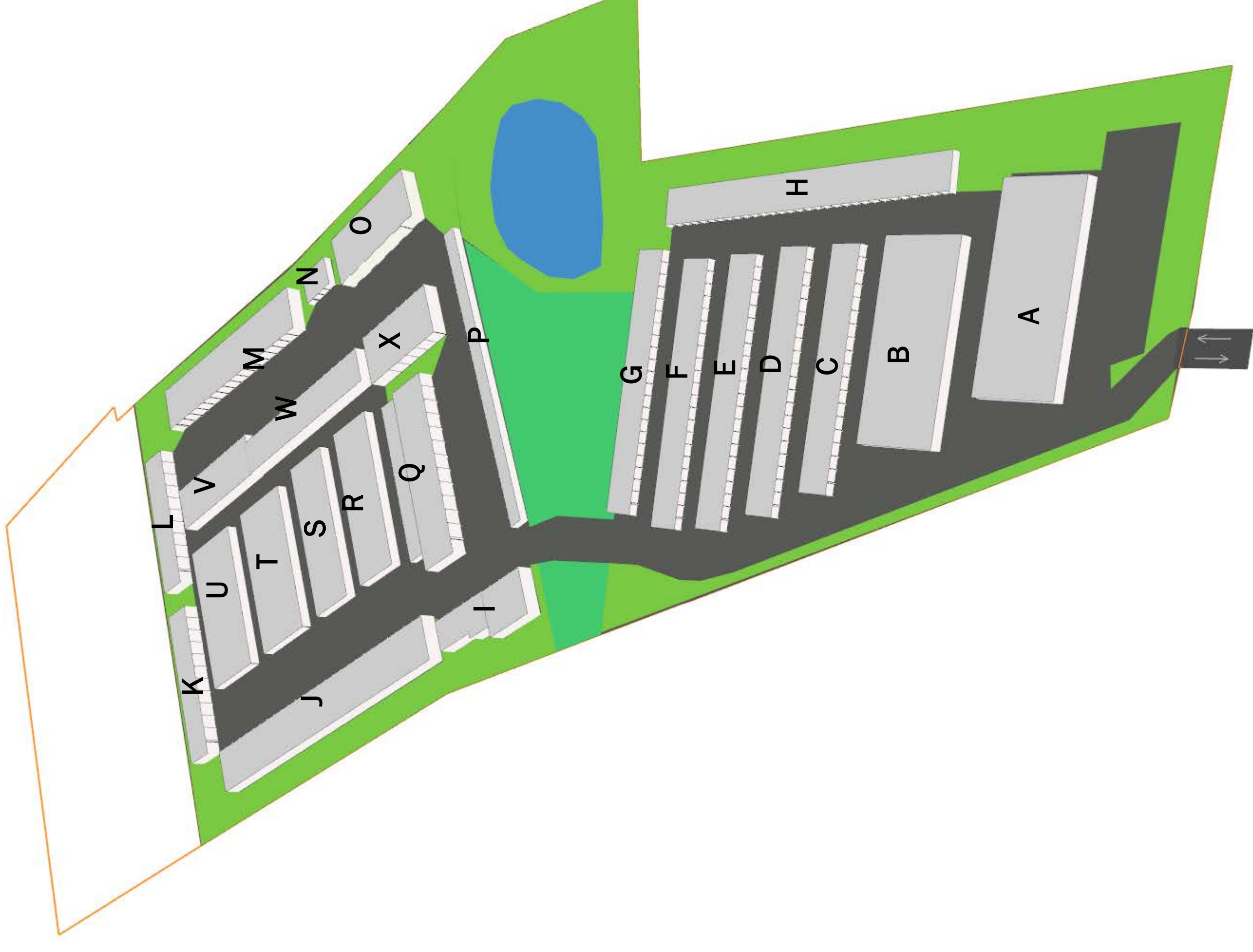
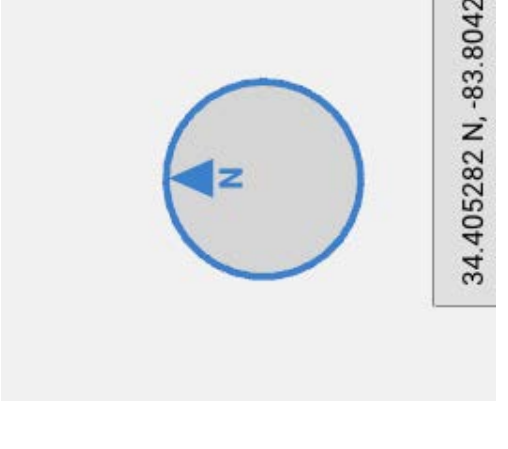
Phase 3 / Building	Dimensions	SF.	Roof	Pitch
Bldg. I	30x45x16, 35x28x16, 40x56x16	4,570	Single	1/2 : 12
Bldg. J	45x378x16	17,010	Single	1/2 : 12
Bldg. K	35 x 168 x 16	5,880	Single	1/2 : 12
Bldg. L	35 x 168 x 16	5,880	Single	1/2 : 12
Bldg. M	45 x 252 x 16	11,340	Single	1/2 : 12
Bldg. N	30 x 40 x 16	1,200	Single	1/2 : 12
Bldg. O	50 x 125 x 16	6,250	Single	1/2 : 12
Bldg. P	15x 300x 8.5	4,500	Single	1/2 : 12
Bldg. Q	30 x 160 x 16, 40x182x16	12,080	Single	1/2 : 12
Bldg. R	55x 160x 9.5 Hybrid. Cond.	8,800	Gable	1/2 : 12
Bldg. S	55x 160x 9.5 Hybrid. Cond.	8,800	Gable	1/2 : 12
Bldg. T	75x 160x 9.5 Hybrid. Cond.	12,000	Gable	1/2 : 12
Bldg. U	75x 160x 9.5 Hybrid. Cond.	12,000	Gable	1/2 : 12
Bldg. V	40x 140x 16	5,600	Gable	1/2 : 12
Bldg. W	35 x 210 x 16	7,350	Gable	1/2 : 12
Bldg. X	50x 105x 16	5,250	Gable	1/2 : 12
Total		128,510		

DRAWN BY	RCG
CHECKED BY	
PROJECT NO.	
DATE	04/05/24
SCALE	1" = 50'
NAME	John Hemphill



Preliminary Site Plan Evaluation. Nopone Rd. Hall County, Georgia.
Building Layout Details

Phase 1 & 2 / Build	Dimensions	SF.	Roof	Pitch
Bldg. A	75 x 160 x 9.5 (CC) hybrid	12,000	Gable	½ : 12
Bldg. B	75 x 160 x 9.5 (CC) hybrid	12,000	Gable	½ : 12
Bldg. C	30x 190 x 8.5	5,700	Gable	½ : 12
Bldg. D	30 x 210 x 8.5	6,300	Gable	½ : 12
Bldg. E	30 x 220 x 8.5	6,600	Gable	½ : 12
Bldg. F	30 x 220 x 8.5	6,600	Gable	½ : 12
Bldg. G	30 x 220 x 8.5	6,600	Single	½ : 12
Bldg. H	30 x 310 x 8.5	9,300	Single	½ : 12
		65,100		
Phase 3 / Building	Dimensions	SF.	Roof	Pitch
Bldg. I	30x45x16, 35x28x16,40x56x16	4,570	Single	½ : 12
Bldg. J	45x378x16	17,010	Single	½ : 12
Bldg. K	35 x 168 x 16	5,880	Single	½ : 12
Bldg. L	35 x 168 x 16	5,880	Single	½ : 12
Bldg. M	45 x 252 x 16	11,340	Single	½ : 12
Bldg. N	30 x 40 x 16	1,200	Single	½ : 12
Bldg. O	50 x 125 x 16	6,250	Single	½ : 12
Bldg. P	15x 300x 8.5	4,500	Single	½ : 12
Bldg. Q	30 x 160 x 16, 40x182x16	12,080	Single	½ : 12
Bldg. R	55x 160x 9.5 Hybrid. Cond.	8,800	Gable	½ : 12
Bldg. S	55x 160x 9.5 Hybrid. Cond.	8,800	Gable	½ : 12
Bldg. T	75x 160x 9.5 Hybrid. Cond.	12,000	Gable	½ : 12
Bldg. U	75x 160x 9.5 Hybrid. Cond.	12,000	Gable	½ : 12
Bldg. V	40x 140x 16	5,600	Gable	½ : 12
Bldg. W	35 x 210 x 16	7,350	Gable	½ : 12
Bldg. X	50x 105x 16	5,250	Gable	½ : 12
		128,510		
Totals		SF.		
Buildings 24		Sf. 193,610		

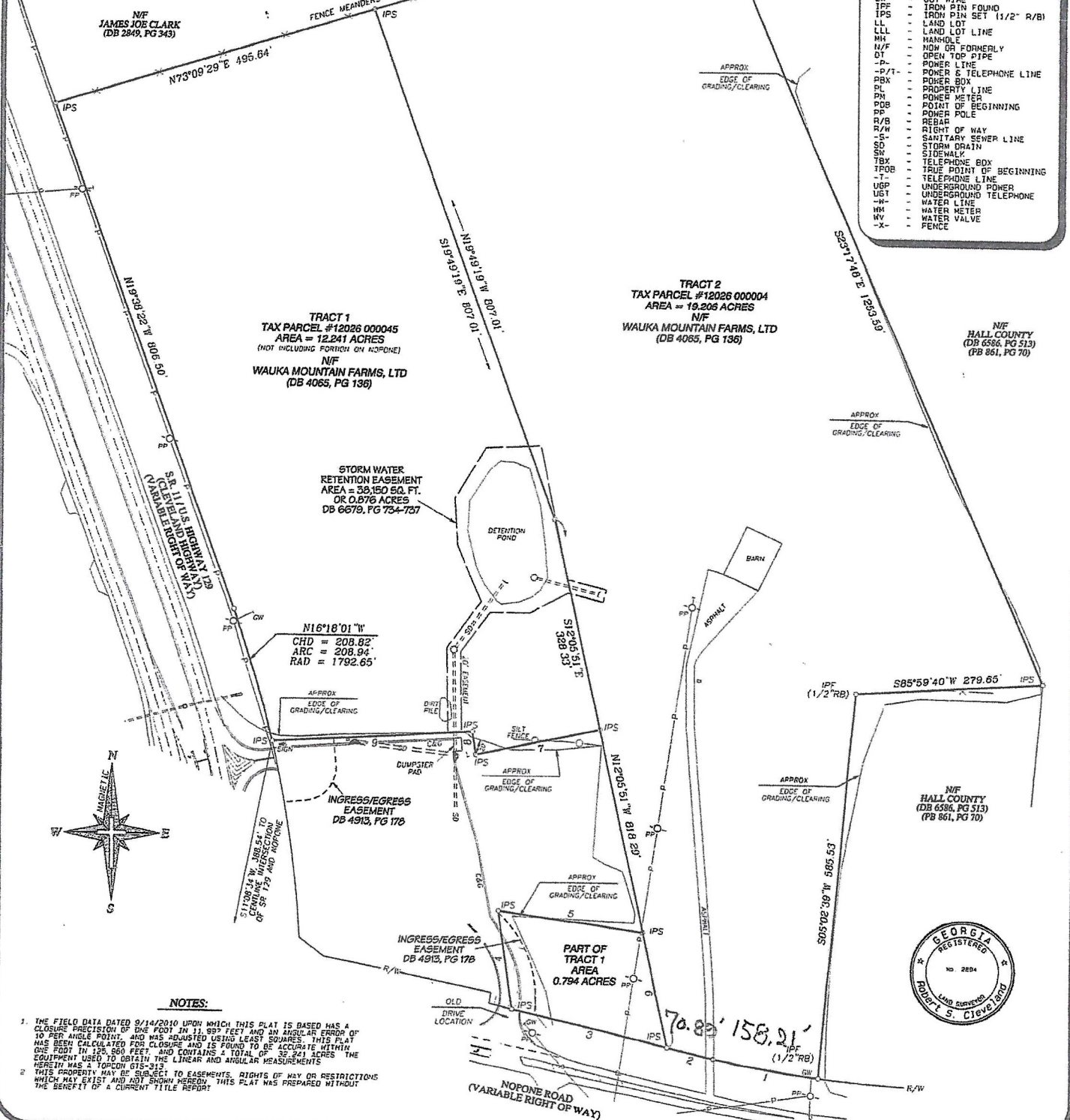


DRAWN BY	RCG
CHECKED BY	
PROJECT NO.	
DATE	03/04/24
SCALE	Not To Scale
NAME	John Hemphill

LINE	CHORD BEARING	CHORD	ARC	RADIUS	LINE BEARING	DISTANCE
1	N80°41'27"W	158.21'	158.26'	1855.79'	7	S77°54'14"W 187.80'
2	N76°36'01"W	70.89'	70.89'		8	N08°21'16"W 34.91'
3	N76°36'01"W	236.21'	236.21'		9	S86°26'29"W 299.04'
4	N08°21'16"W	151.15'	151.15'			
5	S81°43'46"E	216.90'	216.90'			
6	S12°05'51"E	177.02'	177.02'			

LEGEND:

- CT - CRIMP TOP PIPE
- CL - CENTER LINE
- CMF - CONCRETE MONUMENT FOUND
- DB, PG - DEED BOOK, PAGE
- EASE - EASEMENT
- EA - EDGE OF ASPHALT
- FM - FIRE HYDRANT
- G - GAS LINE
- GW - GUY WIRE
- IPF - IRON PIN FOUND
- IPF (1/2" RB) - IRON PIN FOUND (1/2" R/B)
- IPS - IRON PIN SET (1/2" R/B)
- LL - LAND LOT
- LLL - LAND LOT LINE
- MH - MANHOLE
- N/F - NOW OF FORMERLY
- DT - OPEN TOP PIPE
- P - POWER LINE
- P-T - POWER & TELEPHONE LINE
- PBX - POWER BOX
- PL - PROPERTY LINE
- PM - POWER METER
- PDB - POINT OF BEGINNING
- PP - POWER POLE
- R/B - REBAR
- R/W - RIGHT OF WAY
- S - SANITARY SEWER LINE
- SD - STORM DRAIN
- SN - SIDEWALK
- TBX - TELEPHONE BOX
- TPOB - TRUE POINT OF BEGINNING
- T - TELEPHONE LINE
- UBP - UNDERGROUND POWER
- UGT - UNDERGROUND TELEPHONE
- W - WATER LINE
- WM - WATER METER
- WV - WATER VALVE
- X - FENCE



NOTES:

1. THE FIELD DATA DATED 9/14/2010 UPON WHICH THIS PLAT IS BASED HAS A CLASURE PRECISION OF ONE FOOT IN 11,997 FEET AND AN ANGULAR ERROR OF 10 PER ANGLE POINT, AND WAS ADJUSTED USING LEAST SQUARES. THIS PLAT HAS BEEN CALCULATED FOR CLASURE AND IS FOUND TO BE ACCURATE WITHIN ONE FOOT IN 125,860 FEET, AND CONTAINS A TOTAL OF 32,241 SQUARE FEET. THE EQUIPMENT USED TO OBTAIN THE LINEAR AND ANGULAR MEASUREMENTS HEREIN WAS A TOPCON GTS-313.
2. THIS PROPERTY MAY BE SUBJECT TO EASEMENTS, RIGHTS OF WAY OR RESTRICTIONS WHICH MAY EXIST AND NOT SHOWN HEREON. THIS PLAT WAS PREPARED WITHOUT THE BENEFIT OF A CURRENT TITLE REPORT.



DATE	DESCRIPTION

PLAT OF SURVEY FOR:
WAUKA MOUNTAIN FARMS, LTD
 LOCATED IN
 LAND LOT 26,
 12th DISTRICT,
 HALL COUNTY, GEORGIA

Cleveland Land Surveying
 3637 Rocky Ford Terrace, Gainesville, Georgia 30506
 Office (678) 936-6163

DRAWN BY: SHANE	SCALE: 1"=100'	GRAPHIC SCALE	SHEET 1
DATE: 9/23/2010	0' 50' 100' 200'		OF 1
PDF: G210023	JOB# G210023		