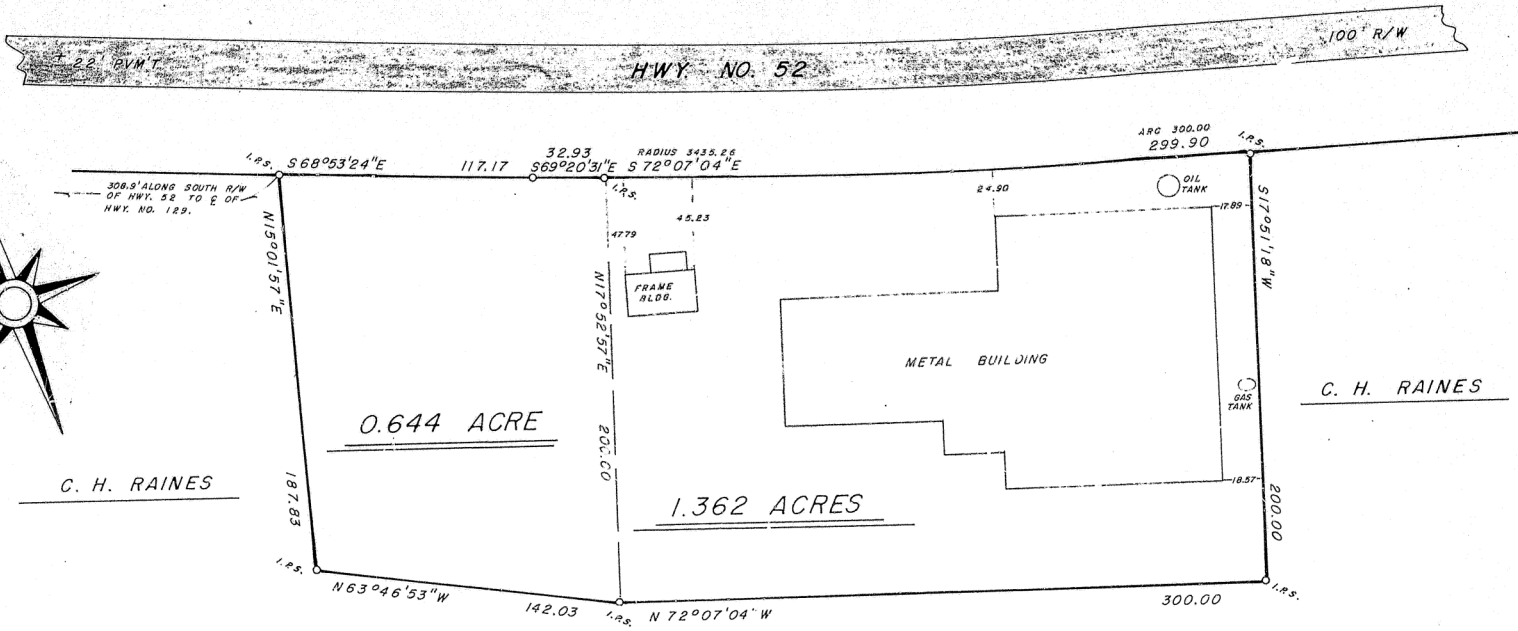
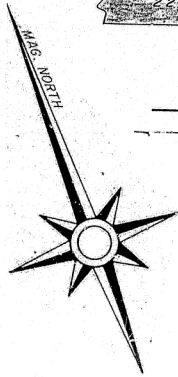


THE FIELD DATA UPON WHICH THIS MAP OR PLAT IS BASED HAS AN ANGULAR ERROR OF $\frac{0.3''}{\text{PER ANGLE POINT}}$, AND A CLOSURE OF ONE FOOT IN $\frac{19,648}{\text{FEET}}$, AND WAS ADJUSTED USING THE CRANDALL RULE. THIS MAP OR PLAT HAS BEEN CALCULATED FOR CLOSURE AND IS FOUND TO BE ACCURATE WITHIN ONE FOOT IN $\frac{350,028}{\text{FEET}}$.

2.006 ACRES



C. H. RAINES

C. H. RAINES

C. H. RAINES



RECORDING CERTIFICATE
 This plat does not qualify as a subdivision under the definition of same contained in the Land Development Resolution and may be recorded without approval of the Hall County Planning Commission.
 By: Red F. Little, Jr., Chairman
 Chairman, Hall County Planning Commission
 Date: Sept. 29, 1981

SURVEY FOR:

ALBERT HELTON, JR. and GROVER HARBEN, JR.

L. L. 30 — 12th DIST.
HALL COUNTY, GA.

SCALE 1" = 50'
AUGUST 31, 1981

81-08-10

1100 — 459

Recorded September 30, 1981 ~ H. Grady Watson, Clerk