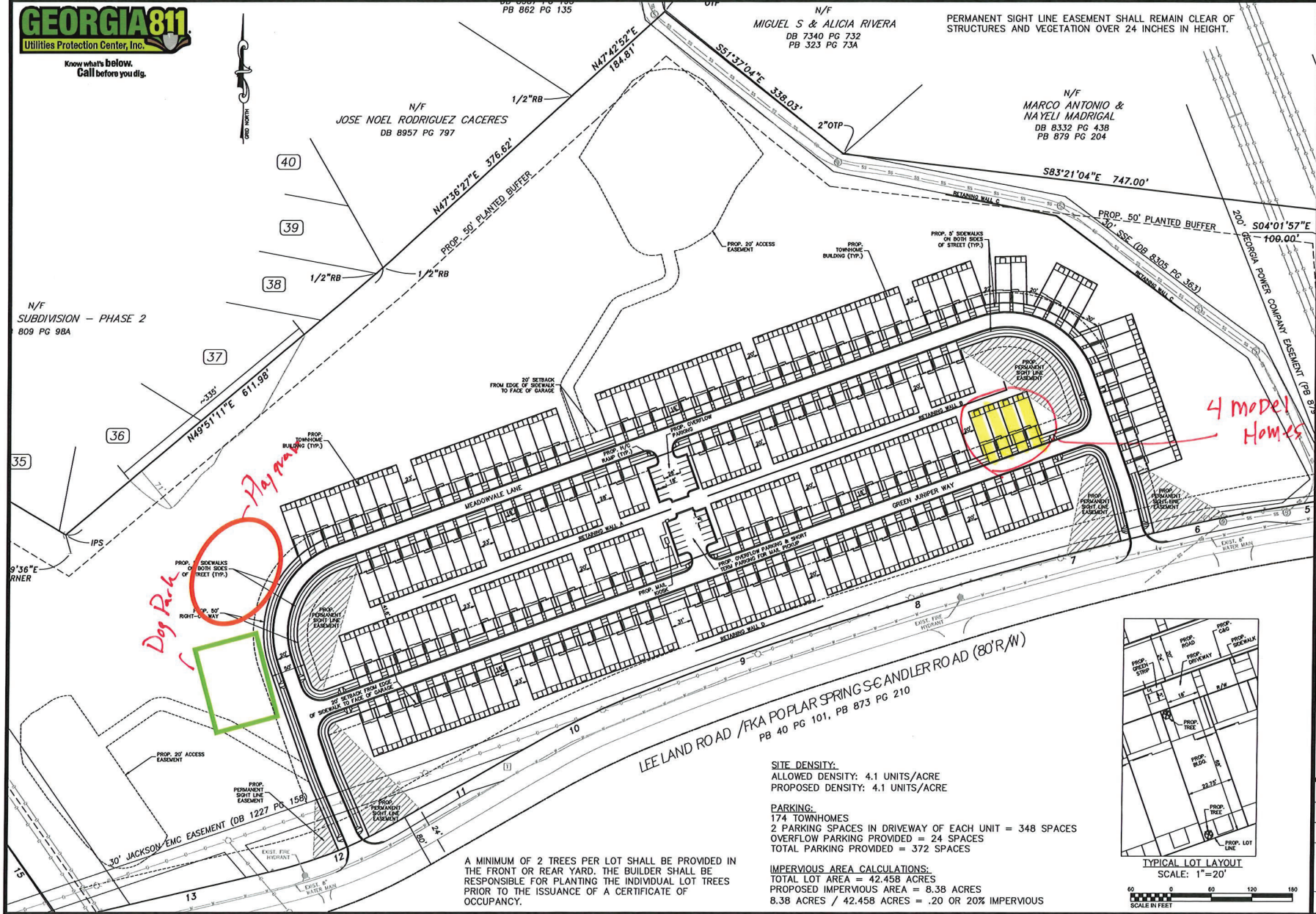




Know what's below.  
Call before you dig.



A MINIMUM OF 2 TREES PER LOT SHALL BE PROVIDED IN THE FRONT OR REAR YARD. THE BUILDER SHALL BE RESPONSIBLE FOR PLANTING THE INDIVIDUAL LOT TREES PRIOR TO THE ISSUANCE OF A CERTIFICATE OF OCCUPANCY.

**SITE DENSITY:**  
ALLOWED DENSITY: 4.1 UNITS/ACRE  
PROPOSED DENSITY: 4.1 UNITS/ACRE

**PARKING:**  
174 TOWNHOMES  
2 PARKING SPACES IN DRIVEWAY OF EACH UNIT = 348 SPACES  
OVERFLOW PARKING PROVIDED = 24 SPACES  
TOTAL PARKING PROVIDED = 372 SPACES

**IMPERVIOUS AREA CALCULATIONS:**  
TOTAL LOT AREA = 42.458 ACRES  
PROPOSED IMPERVIOUS AREA = 8.38 ACRES  
8.38 ACRES / 42.458 ACRES = .20 OR 20% IMPERVIOUS



TYPICAL LOT LAYOUT  
SCALE: 1"=20'



**NEIL E. HORNSEY, P.E.**  
CIVIL ENGINEER  
P.O. BOX 1176 706-974-3350  
DAWSONVILLE, GA 30534



DATE	REVISION
12/17/22	COUNTY COMMENTS
01/10/23	REVISION COMMENTS
01/10/23	REVISION COMMENTS

**SITE PLAN**  
FOR  
**LEE LAND FARMS**  
2522 LEE LAND ROAD  
HALL COUNTY, GEORGIA

Scale 1"=60'  
Designed By NEH  
Drawn By NEH  
Sheet **4** of 34  
Date 9/19/2022