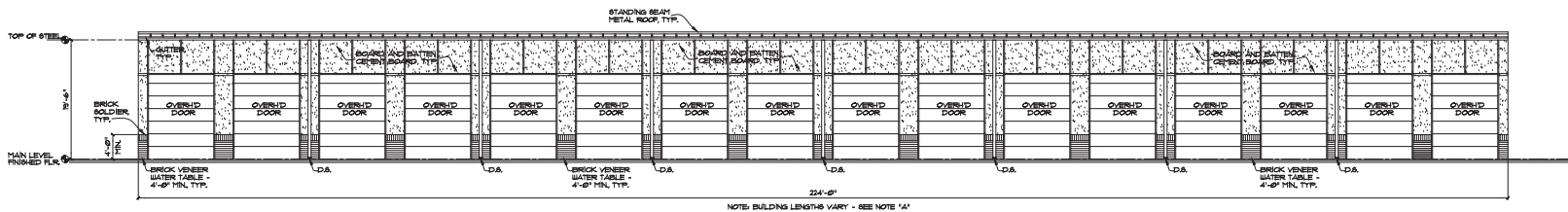
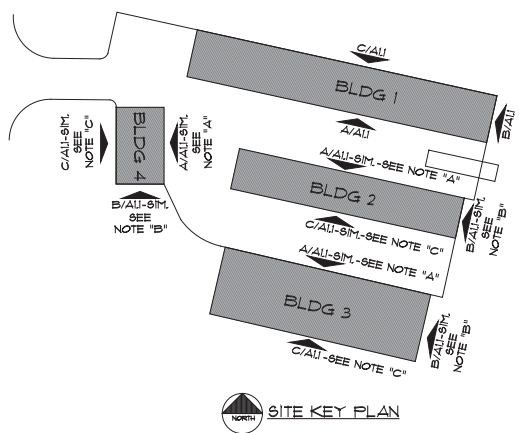


DRAWING ISSUE RECORD		
DATE	REVISION	NO.

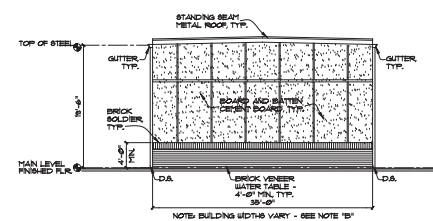


BLDG 1 - SOUTH ELEVATION
 AU 18'-11\"/>

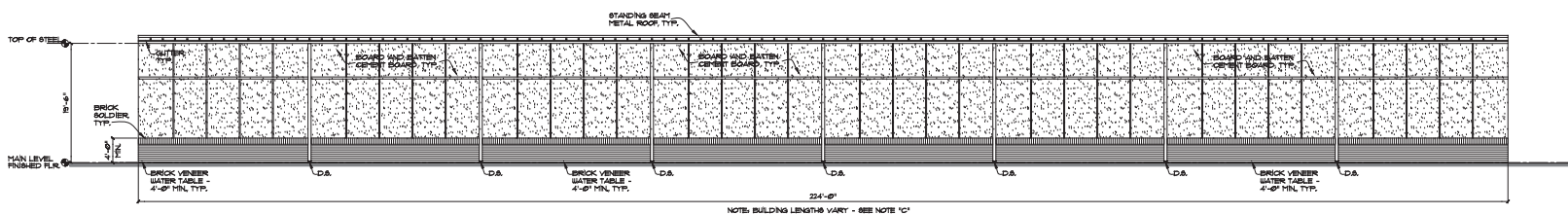


SITE KEY PLAN

GENERAL NOTES:
 (1) THESE NOTES APPLY TO ALL DRAWINGS.
 (2) GENERAL CONTRACTOR SHALL VERIFY ALL EXISTING CONDITIONS & DIMENSIONS AT LOCATIONS IDENTIFIABLE BY DIMENSIONS & CONDITIONS AFFECTING SHOP DRAWING SUBMITTALS.
 (3) STRUCTURAL BAYS ARE SPACED 10'-0\"/>



BLDG 1 - EAST ELEVATION
 AU 18'-11\"/>



BLDG 1 - NORTH ELEVATION
 AU 18'-11\"/>

BOAT REPAIR / SALES & BOAT/CAMPER STORAGE DEVELOPMENT
 FOR
 H-1 ENTERPRISE HOLDINGS, INC.
 6516 NEW BETHANY ROAD
 BUFORD, HALL COUNTY, GEORGIA 30608
 DATE: MARCH 30, 2023
 DRAWING NO.: HALL-23001

cunningham forehand matthews moore
 404.720.8110
 cunningham, forehand, matthews & moore, architects, inc. - 2011 manchester street, n.e. - atlanta, georgia 30324 - phone (404) 873-2152