



Planners & Engineers Collaborative+

LAND PLANNING + LANDSCAPE ARCHITECTURE + CIVIL ENGINEERING
ARBORISTS + SURVEYING + CONSTRUCTION + WATER RESOURCES
350 RESEARCH COURT STE 200
PEACHTREE CORNERS, GA 30092

PROJECT

RIDGE ROAD

A MASTER PLANNED MIXED-USE DEVELOPMENT

AT
4435 RIDGE ROAD,
BUFORD, GEORGIA 30519
HALL COUNTY

FOR
THE AGENCY REDEFINING REAL ESTATE

MUNICIPALITY PROJECT #

REVISIONS

NO.	DATE	BY	DESCRIPTION

THIS SEAL IS ONLY VALID IF COUNTER SIGNED AND DATED WITH AN ORIGINAL SIGNATURE.

PRELIMINARY

NOT TO BE RELEASED FOR CONSTRUCTION

STORMWATER MANAGEMENT EXHIBIT



SCALE: 1" = 150'
DATE: 04/24/2024
PROJECT: 22087.00A

24 HOUR CONTACT: CHAD LAGOMARSINO

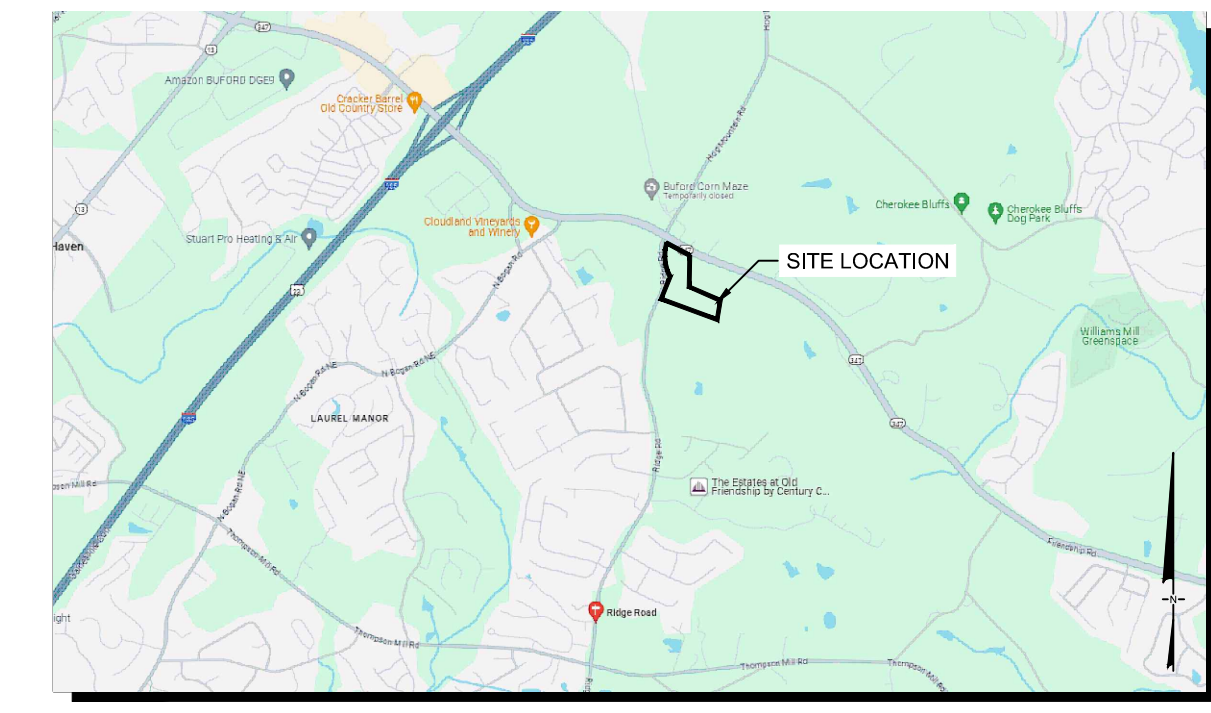
GEORGIA811
www.Georgia811.com
Know what's below. Call before you dig.

E2
SHEET

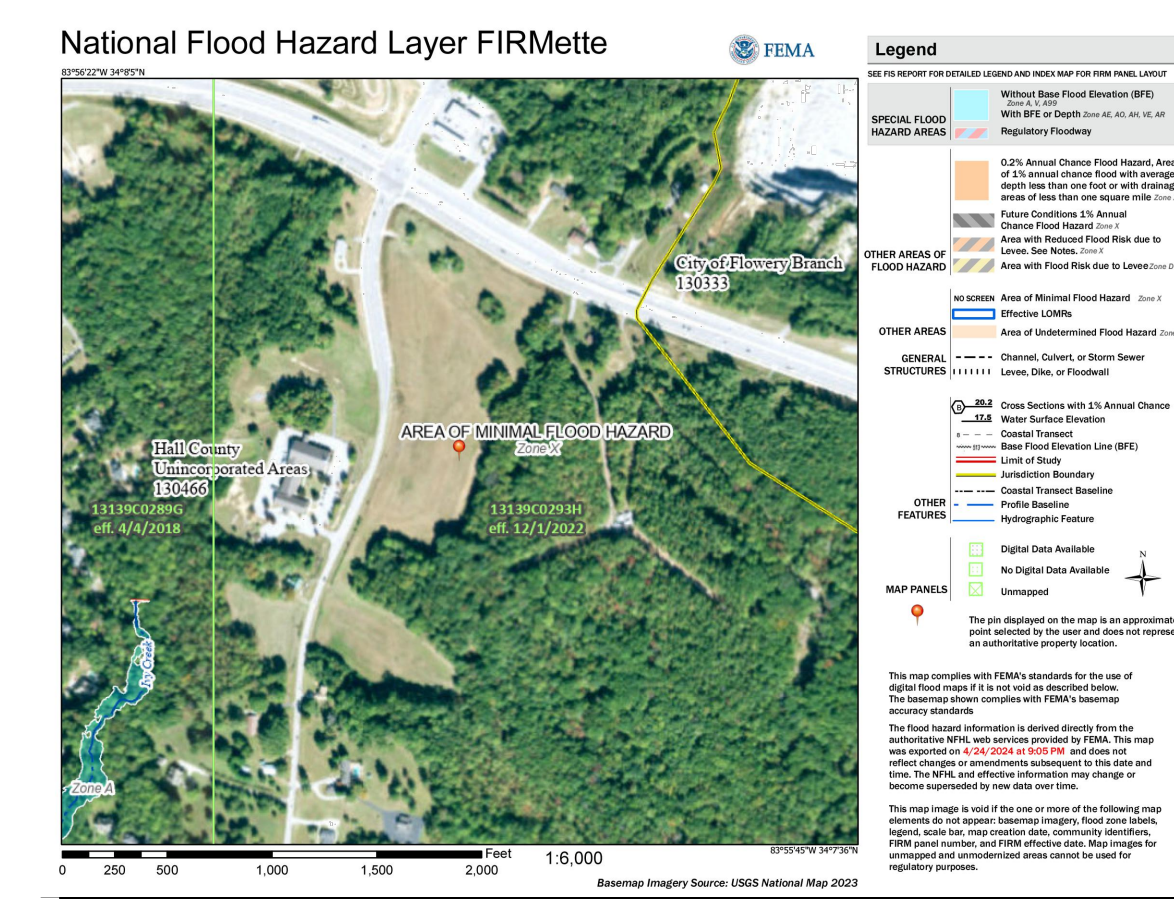
NOTE:

THROUGHOUT THE CONSTRUCTION PROCESS, THE APPLICANT IS PROPOSING TO MITIGATE EROSION AND STORMWATER RUNOFF CONCERNS BY INSTALLING VEGETATIVE AND STRUCTURAL BMPs (BEST MANAGEMENT PRACTICES) THROUGHOUT THE PROPERTY. THE DESIGN ENGINEER WILL PROPOSE TECHNIQUES THAT ARE CONSISTENT WITH THE OSWCO FIELD MANUAL FOR EROSION & SEDIMENT CONTROL. IN GEORGIA, SOME OF THOSE BMPs INCLUDE SILT AND TREE PROTECTION FENCES, TEMPORARY SEDIMENT BASINS, DISTURBED AREA STABILIZATION WITH SODDING AND/OR SEEDING, SLOPE STABILIZATION MATTING, DUST CONTROL MEASURES, ETC. TO ENSURE NO SEDIMENT WILL LEAVE THE PROPERTY DURING CONSTRUCTION.

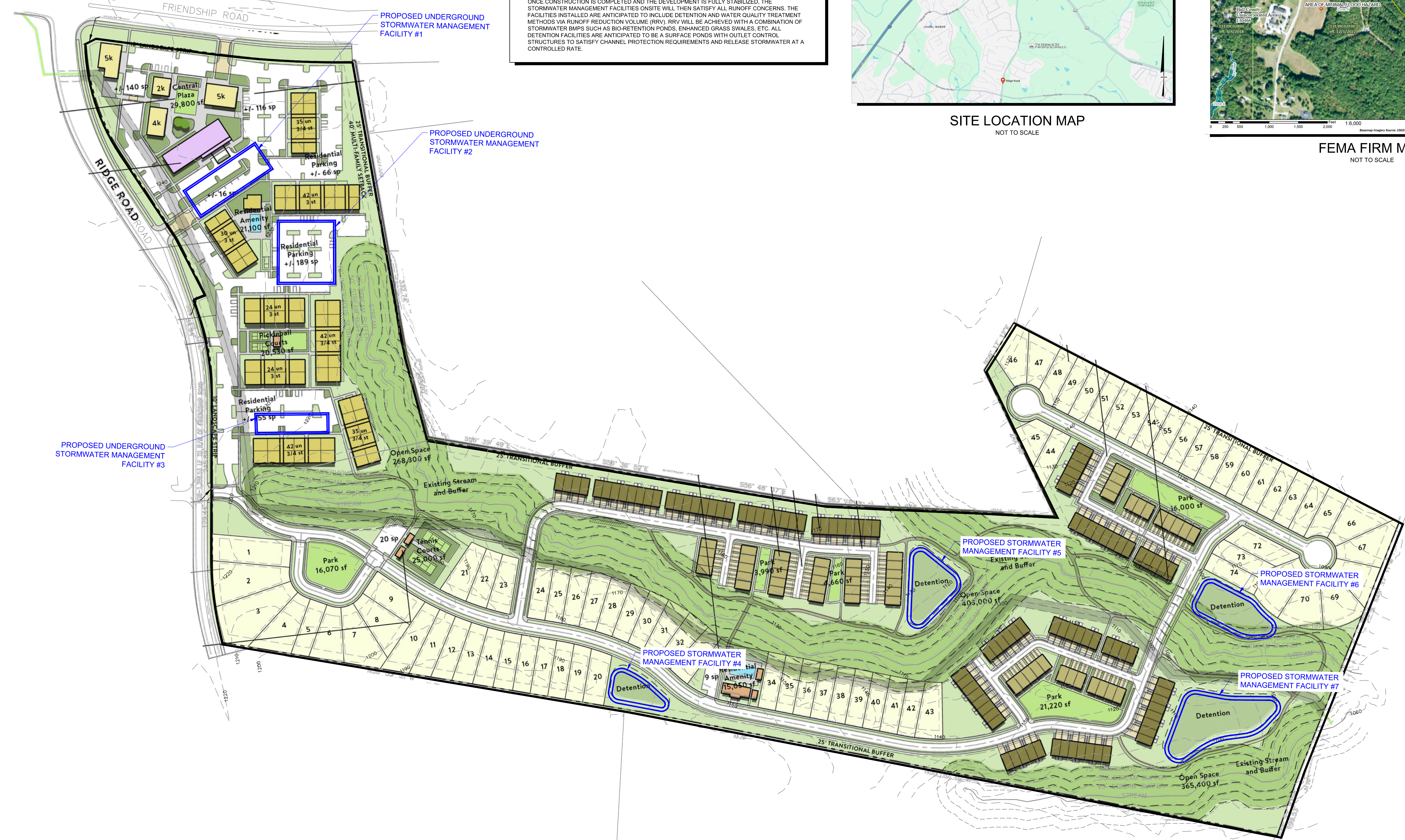
ONCE CONSTRUCTION IS COMPLETED AND THE DEVELOPMENT IS FULLY STABILIZED, THE STORMWATER MANAGEMENT FACILITIES ON-SITE WILL THEN SATISFY ALL RUNOFF CONCERNS. THE FACILITIES INSTALLED ARE ANTICIPATED TO INCLUDE DETENTION AND WATER QUALITY TREATMENT METHODS VIA RUNOFF REDUCTION VOLUME (RRV). RRV WILL BE ACHIEVED WITH A COMBINATION OF STORMWATER BMPs SUCH AS BIO-RETENTION PONDS, ENHANCED GRASS SWALES, ETC. ALL DETENTION FACILITIES ARE ANTICIPATED TO BE A SURFACE POND WITH OUTLET CONTROL STRUCTURES TO SATISFY CHANNEL PROTECTION REQUIREMENTS AND RELEASE STORMWATER AT A CONTROLLED RATE.



SITE LOCATION MAP
NOT TO SCALE



FEMA FIRM MAP
NOT TO SCALE



This drawing is the property of Planners and Engineers Collaborative+ and shall not be copied, reprinted, or distributed without the express written consent of Planners and Engineers Collaborative+. It is to be used only for the project and site for which it was prepared. Drawings and figures taken from this drawing are to be used only for the project and site for which it was prepared.

J:\2022\2087\00A\DWG\Concepts & Exhibits\Concepts\22087.00A - Site Concept.dwg - PLUMBING - 04/10/2024 4:13 PM