

**ENGINEERING and TRAFFIC INVESTIGATION REPORT**  
**CR 251/Duckett Mill Road**  
**SR 53/Dawsonville Highway to 800' South of CR 1667/Banks Mountain Road**

Date Prepared: January 2025  
Hall County Engineering Department



**ORIGIN, LOCATION, REASON:**

Hall County Government has received requests from residents numerous times to review the speed limit on CR 251/Duckett Mill Road from SR 53/Dawsonville Highway to the existing speed limit change located 800' south of Banks Mountain Road. The request to consider dropping the speed limit to 40 MPH to make the entire length of CR 251/Duckett Mill Road a consistent speed limit.

**SEGMENT DESCRIPTION:**

CR 251/Duckett Mill Road is a two-lane roadway, functionally classified as a Local Road. Duckett CR 251/Mill Road is a dead-end roadway that terminates at Duckett Mill Park. This subject section of CR 251/Duckett Mill Road contains three (3) commercial driveways, five (5) minor stop control

intersections and thirty seven (37) residential driveways. The typical section has five foot or less grassed shoulders with drainage ditches. CR 251/Duckett Mill Road operates as a minor stop control at the intersection with SR 53/Dawsonville Highway. The existing speed limit is 50 MPH.

**PEDESTRIAN MOVEMENT and/or FACILITIES:**

There are no existing pedestrian facilities present throughout the corridor. However, pedestrian usage was reported by the local residents and were observed by staff. A total of twenty (20) pedestrians and four (4) bicyclists we observed during the observation windows.

**VOLUME:**

Traffic volumes were collected from the Georgia Department of Transportation’s (GDOT) Traffic Analysis and Data Application (TADA). The Average Annual Daily Traffic (AADT) on CR 251/Duckett Mill Road is estimated on Count Station ID 139-8025 as 1130 vehicles per day (VPD) in 2023. The truck percentage is 0%, which is to be expected with the residential nature of the area and the roadway terminates at Duckett Mill Park.

**SPEED DATA:**

Spot speed data was collected at multiple location in the corridor from October 1, 2024 thru October 17, 2024.

Tube counts were collected two sites. Box 2 was located on the northern section of CR 251/Duckett Mill Road close to SR 53/Dawsonville Highway. Box 3 was located on southern section of CR 251/Duckett Mill Road near CR 1667/Banks Mountain Road.

The below table summarizes the data:

	85 <sup>th</sup> Percentile	50 <sup>th</sup> Percentile	Mean
Box 2	54.8 MPH	49.0 MPH	47.4 MPH
Box 3	53.2 MPH	45.4 MPH	45.9 MPH

**CRASH HISTORY:**

Crash data was obtained from the Georgia Electronic Accident Reporting System (GEARS) from January 1, 2020 thru December 31, 2024. The crash data shows eight (8) total crashes, one (1) injury crash and zero (0) fatal crashes. The table below shows the crash data for the corridor:

Year	Angle	Head On	Rear End	Side Swipe	Not w/ Motor Vehicle	Property Damage Only	Injury	Fatality	Pedestrian
2020	0	0	0	0	0	1	0	0	0
2021	0	0	0	0	0	0	0	0	0
2022	0	0	1	1	1	1	1	0	0
2023	0	0	0	0	0	1	0	0	0
2024	0	0	0	0	0	2	0	0	0
<b>Total</b>	<b>0</b>	<b>0</b>	<b>1</b>	<b>1</b>	<b>1</b>	<b>5</b>	<b>1</b>	<b>0</b>	<b>0</b>



CR 251/Duckett Mill Road experiences an average crash rate of 275 crashes per 100 million vehicle miles traveled (VMT) and the average injury rate is 34 injuries per 100 million VMT. The section crash rate of 275 crashes per 100 million VMT is above the critical crash rate of 240 crashes per 100 million VMT.

**VULNERABLE ROAD USER EVALUATION:**

For the analysis period of January 1, 2020 to December 31, 2024, there have been no documented pedestrian or bicycle related crashes. There is a United States Corps of Engineers park located on Lake Lanier and where CR 251/Duckett Mill Road terminates. The Social Vulnerability Index from the Centers for Disease Control and Prevention (CDC) is mixed. The overall Social Vulnerability in the area is average. The household characteristics and racial/ethnic minority status exhibit the highest vulnerability. The CDC Social Vulnerability Index report is provided in the appendix

**USLIMITS2 Report:**

The USLIMITS2 report recommends a speed limit of 45 MPH for this section of CR 251/Duckett Mill Road.

**CONCLUSION:**

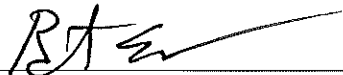
The speed data collected in the corridor showed a combined 85<sup>th</sup> percentile speed of 53 MPH, a 50<sup>th</sup> percentile speed of 47 MPH and a mean speed of 46 MPH. The crash rate along the corridor is higher than similar sections of roadway in the state. This is most likely due to the rural nature of the area. The predominant land use in the area is residential, leading to a significant number of residential driveways. It is also important to note that CR 251/Duckett Mill Road terminates at Duckett Mill Park. Thus, it is reasonable to assume a significant number of users are recreational in nature and that includes pedestrian and bicycle (non-motorized) users.

**RECOMMENDATION:**

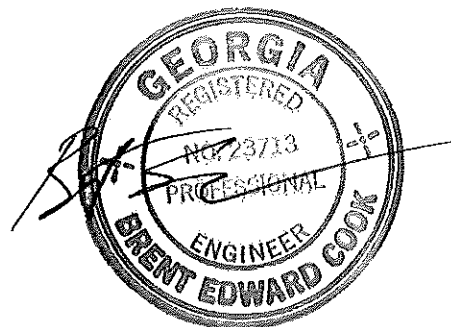
Based on the above average crash rate and predominantly residential/recreational facility users, the following is recommended:

- Reduce the speed limit from SR 53/Dawsonville Highway to the existing 40 MPH speed limit change (MP 1.41) from 50 MPH to 40 MPH.

**RECOMMENDED BY:**

  
\_\_\_\_\_  
County Engineer

1-7-25  
\_\_\_\_\_  
Date



## Duckett Mill Road - Pedestrian / Bicycle Study

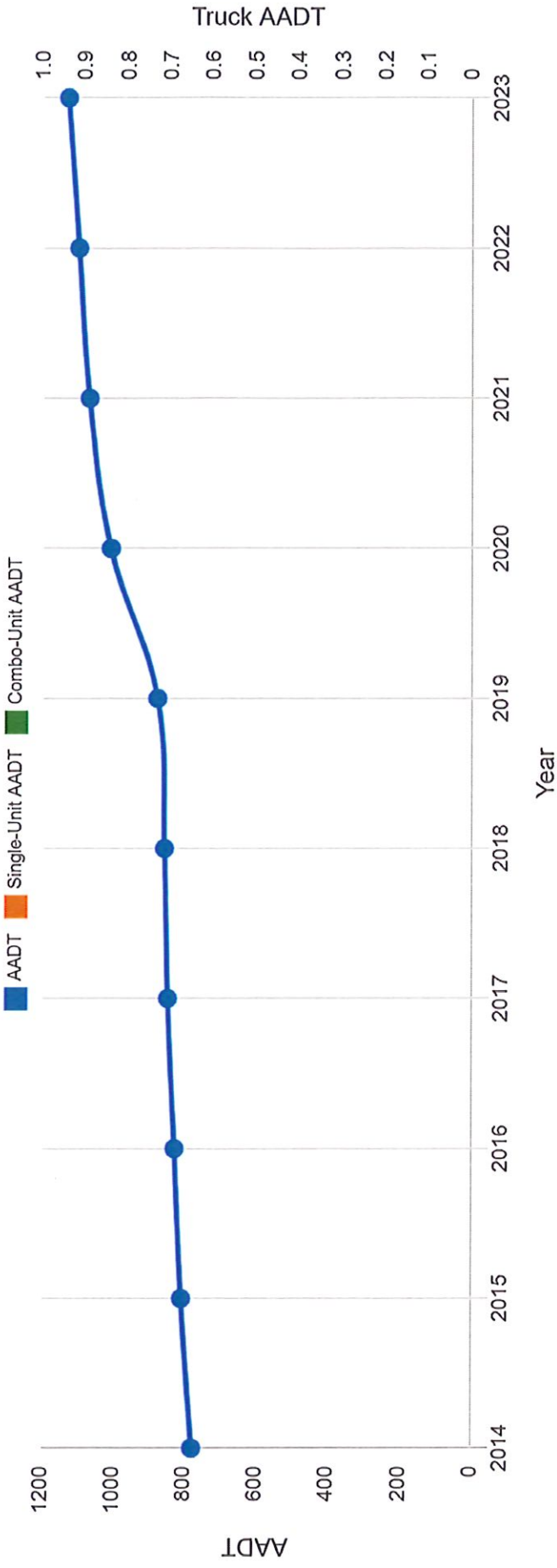
Day / Date	Time / From - Until	Pedestrian	Bicycle
Wed / 10-2-24	3:30 PM - 5:30 PM		
Thurs / 10-3-24	6:30 AM - 8:30 AM	<del>    </del>	
Sat. / 10-5-24	7:00 AM - 9:00 AM	<del>    </del>	
Sat. / 10-5-24	5:20 PM - 7:20 PM		

# Single Station Annualized Statistics - 139-8025

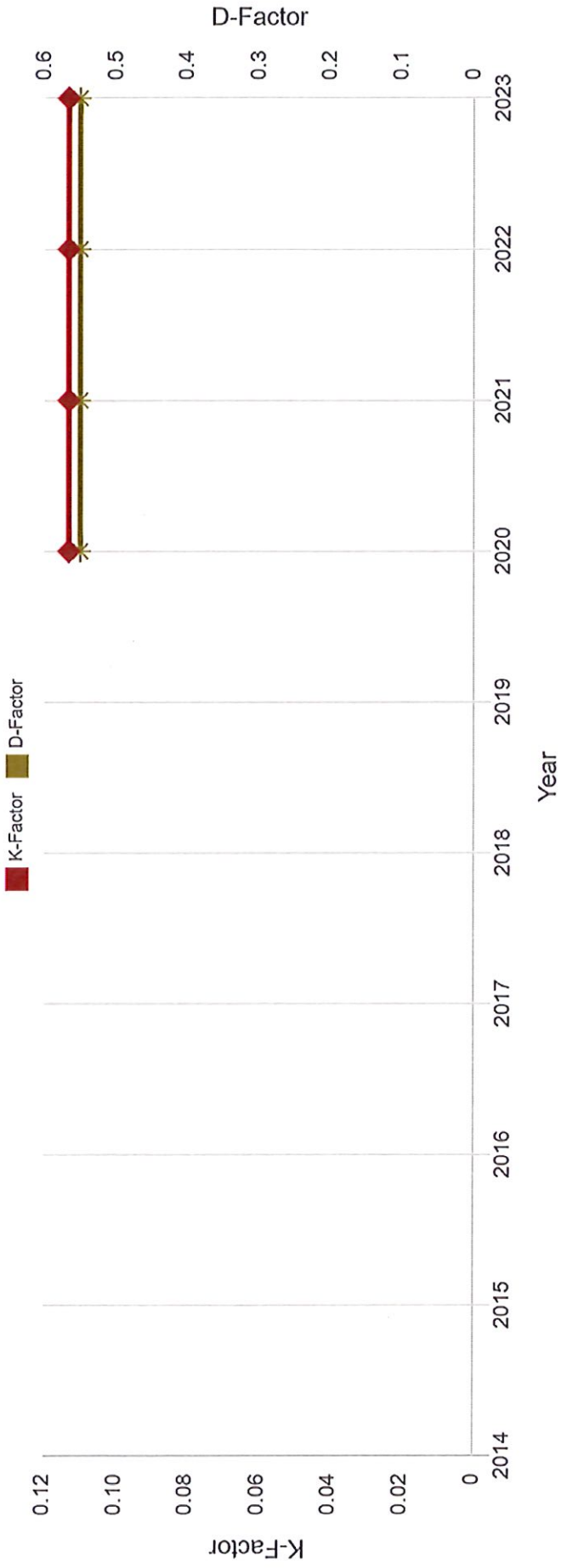
Site Name 139-8025 Site ID 0000139\_8025 Description SR 005300 BEG AT

Data Item	2014	2015	2016	2017	2018	2019	2020	2021	2022	2023
Statistics Type	-	Estimated	Estimated	Estimated	Estimated	Estimated	Actual	Estimated	Estimated	Estimated
AAADT	780	810	830	850	860	880	1010	1070	1100	1130
Single-Unit AADT	-	-	-	-	-	-	-	-	-	-
Combo-Unit AADT	-	-	-	-	-	-	-	-	-	-
Single-Unit % DHV	-	-	-	-	-	-	-	-	-	-
Combo-Unit % DHV	-	-	-	-	-	-	-	-	-	-
Single-Unit % Peak	-	0	0	-	-	-	-	-	-	-
Combo-Unit % Peak	-	0	0	-	-	-	-	-	-	-
K-Factor	-	-	-	-	-	-	0.1132	0.1132	0.1132	0.1132
D-Factor	-	-	-	-	-	-	0.55	0.55	0.55	0.55
Future AADT	-	-	930	1070	1090	1190	1270	1350	1680	1900

# Single Station Annualized Statistics - 139-8025



# Single Station Annualized Statistics - 139-8025



Counter #2

Site: Duckett Mill Rd  
Tuesday, 10/1/2024 1:00 PM -  
Thursday, 10/17/2024 9:15 AM

Volume Grand Totals

**Average Hourly Volumes**

	Southbound	Northbound	Combined
12:00 AM	3.2	1.5	4.7
1:00 AM	1.3	1.4	2.6
2:00 AM	0.4	0.8	1.2
3:00 AM	0.8	1.3	2.1
4:00 AM	0.7	2.9	3.6
5:00 AM	1.6	9.5	11.1
6:00 AM	6.4	26.3	32.7
7:00 AM	13.6	33.4	47.1
8:00 AM	18.9	36.8	55.6
9:00 AM	22.3	33.3	55.5
10:00 AM	28.6	38.0	66.6
11:00 AM	30.6	40.9	71.5
12:00 PM	35.7	41.0	76.7
1:00 PM	41.3	36.2	77.5
2:00 PM	44.0	34.5	78.5
3:00 PM	46.9	37.0	83.9
4:00 PM	51.4	33.2	84.6
5:00 PM	48.9	36.3	85.1
6:00 PM	40.6	30.7	71.3
7:00 PM	31.6	22.6	54.3
8:00 PM	24.8	14.0	38.8
9:00 PM	15.7	8.6	24.3
10:00 PM	10.9	5.1	16.0
11:00 PM	6.0	2.3	8.3
Average Daily Traffic (ADT)	526.2	527.4	1053.6

**Volume Totals**

	Southbound	Northbound	Combined
	8309	8299	16608
	50.0%	50.0%	



Site: Duckett Mill Rd  
 Tuesday, 10/1/2024 1:00 PM -  
 Thursday, 10/17/2024 9:00 AM

Counter #2

Speed Grand Totals

mph	Hourly Averages											Southbound	
	0- <15	15- <20	20- <25	25- <30	30- <35	35- <40	40- <45	45- <50	50- <55	55- <60	60- <65	65- <70	70- <75
Total	3.2	0.0	0.0	0.1	0.2	0.4	0.7	0.6	0.8	0.1	0.2	0.0	0.1
12:00 AM	0.0	0.0	0.0	0.1	0.0	0.4	0.7	0.6	0.8	0.1	0.2	0.0	0.1
1:00 AM	0.0	0.0	0.1	0.0	0.0	0.3	0.3	0.3	0.1	0.1	0.2	0.0	0.0
2:00 AM	0.0	0.0	0.0	0.1	0.0	0.2	0.0	0.1	0.0	0.0	0.1	0.0	0.0
3:00 AM	0.0	0.0	0.0	0.0	0.0	0.1	0.2	0.2	0.1	0.1	0.0	0.1	0.0
4:00 AM	0.0	0.0	0.0	0.1	0.0	0.1	0.1	0.2	0.1	0.1	0.0	0.0	0.0
5:00 AM	0.0	0.0	0.0	0.0	0.0	0.1	0.3	0.7	0.4	0.0	0.1	0.0	0.0
6:00 AM	0.3	0.0	0.0	0.1	0.1	0.4	1.4	1.9	1.7	0.3	0.2	0.0	0.0
7:00 AM	0.0	0.0	0.1	1.1	0.4	1.3	2.1	3.1	3.9	0.9	0.7	0.0	0.0
8:00 AM	0.0	0.0	0.3	0.3	0.8	0.9	2.6	6.0	5.4	1.3	1.2	0.1	0.1
9:00 AM	0.0	0.1	0.1	0.1	0.7	1.0	2.7	6.1	7.9	1.8	1.6	0.2	0.1
10:00 AM	0.1	0.2	0.0	0.2	0.5	1.2	3.3	7.5	10.7	2.4	2.1	0.1	0.1
11:00 AM	0.0	0.0	0.2	0.5	0.3	2.1	3.1	9.8	9.7	3.5	1.3	0.1	0.1
12:00 PM	0.2	0.3	0.1	0.7	1.1	2.1	5.6	9.6	11.4	3.0	1.5	0.1	0.1
1:00 PM	0.5	0.2	0.4	0.6	0.9	2.2	5.6	11.8	13.9	3.7	1.4	0.2	0.1
2:00 PM	0.8	0.6	0.3	0.8	1.1	2.3	5.4	12.3	14.7	3.6	1.9	0.2	0.1
3:00 PM	1.3	0.7	0.2	0.3	1.2	2.6	5.1	13.6	15.0	4.0	2.5	0.2	0.4
4:00 PM	0.4	0.3	0.0	0.8	1.4	2.2	4.7	14.3	19.3	5.3	2.4	0.4	0.2
5:00 PM	0.4	0.1	0.0	0.7	2.3	1.8	5.8	13.2	17.9	3.8	2.3	0.6	0.1
6:00 PM	0.2	0.3	0.3	0.8	0.9	1.8	4.4	11.9	14.8	3.4	1.3	0.1	0.3
7:00 PM	0.4	0.1	0.3	0.9	1.1	1.8	6.9	9.5	8.1	1.4	1.1	0.1	0.1
8:00 PM	0.1	0.1	0.1	0.3	0.8	2.8	5.6	8.3	5.4	0.9	0.4	0.1	0.0
9:00 PM	0.0	0.0	0.3	0.1	0.8	1.9	2.8	5.3	3.2	0.9	0.4	0.0	0.1
10:00 PM	0.1	0.1	0.1	0.1	0.7	1.3	1.9	3.6	2.3	0.7	0.1	0.1	0.1
11:00 PM	0.0	0.2	0.1	0.1	0.3	0.9	1.1	1.2	1.4	0.4	0.3	0.0	0.1
Daily Average	4.8	3.2	2.6	8.5	15.4	31.5	71.7	150.9	168.0	41.6	23.1	2.8	2.0
Average (Mean)	47.9 mph	Minimum 10.2 mph	Maximum 86.7 mph	Pace Range 43.3 - 53.3 mph 5149 vehicles (62.0%)									
Percentile Speeds (mph)	10% 38.0	15% 41.4	50% 49.0	85% 54.8	90% 56.4								
Speeds Exceeded	25 mph 98.0% (8132)	35 mph 93.4% (7753)	45 mph 73.8% (6123)	55 mph 13.2% (1094)	65 mph 0.9% (76)	75 mph 0.2% (14)							

Study Grand Totals													
mph	0- <15	15- <20	20- <25	25- <30	30- <35	35- <40	40- <45	45- <50	50- <55	55- <60	60- <65	65- <70	70- <75
Total	77	51	42	135	244	498	1132	2381	2548	655	363	44	32
Southbound	0.9%	0.6%	0.5%	1.6%	2.9%	6.0%	13.6%	28.7%	31.9%	7.9%	4.4%	0.5%	0.4%

Site: Duckett Mill Rd.  
 Tuesday, 10/1/2024 1:00 PM -  
 Thursday, 10/17/2024 9:00 AM

Counter # 2

Speed Grand Totals

mph	Hourly Averages											Northbound	
	0 - <15	15 - <20	20 - <25	25 - <30	30 - <35	35 - <40	40 - <45	45 - <50	50 - <55	55 - <60	60 - <65		65 - <70
Total	1.5	0.0	0.1	0.2	0.0	0.3	0.4	0.2	0.2	0.1	0.0	0.0	0.1
12:00 AM	0.0	0.0	0.1	0.2	0.0	0.3	0.4	0.2	0.2	0.1	0.0	0.0	0.1
1:00 AM	0.0	0.0	0.0	0.0	0.1	0.3	0.1	0.3	0.5	0.1	0.0	0.0	0.0
2:00 AM	0.0	0.0	0.1	0.1	0.1	0.3	0.1	0.1	0.1	0.0	0.0	0.0	0.0
3:00 AM	0.0	0.0	0.2	0.4	0.2	0.1	0.3	0.2	0.0	0.0	0.0	0.0	0.0
4:00 AM	0.0	0.0	0.0	0.0	0.1	0.1	0.5	1.1	1.0	0.1	0.0	0.1	0.0
5:00 AM	0.1	0.0	0.1	0.4	0.5	0.6	1.6	2.7	2.6	0.6	0.3	0.0	0.0
6:00 AM	1.9	0.0	0.5	1.1	0.4	2.1	3.6	6.4	8.6	1.4	0.3	0.0	0.0
7:00 AM	0.0	0.0	0.1	0.6	0.9	1.1	6.3	9.4	11.9	2.1	1.0	0.1	0.0
8:00 AM	0.3	0.0	0.5	1.3	2.3	2.3	7.0	11.3	8.6	2.0	1.1	0.1	0.0
9:00 AM	0.5	0.0	0.3	0.4	1.3	2.3	6.5	10.4	8.4	2.4	0.5	0.1	0.0
10:00 AM	0.4	0.0	0.3	0.6	1.0	2.4	7.7	11.7	10.7	1.9	1.1	0.2	0.0
11:00 AM	0.2	0.1	0.2	0.7	0.7	3.0	6.8	11.1	13.3	3.1	1.5	0.1	0.0
12:00 PM	0.3	0.1	0.5	1.0	0.5	2.1	7.0	12.9	12.0	3.4	1.2	0.0	0.1
1:00 PM	0.2	0.0	0.4	1.0	0.6	1.9	5.9	10.8	11.0	2.9	1.2	0.2	0.1
2:00 PM	0.9	0.0	0.3	0.6	0.9	2.4	4.7	8.8	10.8	3.4	1.4	0.2	0.0
3:00 PM	0.3	0.3	0.3	0.6	1.0	1.8	5.2	11.1	11.1	3.7	1.8	0.1	0.0
4:00 PM	0.4	0.1	0.6	0.7	1.0	2.0	4.9	10.2	10.2	2.4	0.6	0.2	0.0
5:00 PM	0.4	0.0	0.1	1.0	0.8	2.1	6.3	10.7	11.3	2.8	0.8	0.2	0.0
6:00 PM	0.4	0.1	0.2	0.8	0.9	1.9	5.2	9.7	8.5	1.9	1.1	0.1	0.1
7:00 PM	0.3	0.1	0.3	0.5	0.8	2.8	5.3	6.5	4.7	0.7	0.8	0.1	0.0
8:00 PM	0.4	0.0	0.4	0.8	0.7	1.4	2.9	3.4	3.2	0.7	0.2	0.0	0.1
9:00 PM	0.0	0.0	0.4	0.4	0.3	0.9	2.3	2.3	1.9	0.4	0.2	0.0	0.0
10:00 PM	0.1	0.1	0.3	0.1	0.4	0.5	1.1	0.9	1.2	0.4	0.1	0.0	0.0
11:00 PM	0.0	0.0	0.1	0.2	0.2	0.3	0.4	0.5	0.6	0.1	0.0	0.0	0.0
Daily Average	7.0	0.8	5.6	13.2	15.5	34.8	91.8	152.6	152.3	36.4	15.1	1.8	0.4
Average (Mean)	46.8 mph	Minimum 10.2 mph	Maximum 84.6 mph	Pace Range 43.3 - 53.3 mph 5038 vehicles (50.8%)									
Percentile Speeds (mph)	10% 37.2	15% 40.5	50% 47.7	85% 54.8	90% 56.4								
Speeds Exceeded	25 mph 97.5% (8074)	35 mph 92.0% (7620)	45 mph 68.0% (5632)	55 mph 10.2% (844)	65 mph 0.4% (35)	75 mph 0.0% (4)							
Study Grand Totals													
Total	0 - <15	15 - <20	20 - <25	25 - <30	30 - <35	35 - <40	40 - <45	45 - <50	50 - <55	55 - <60	60 - <65	65 - <70	70 - <200
8285	110	12	89	209	245	547	1441	2396	2392	571	238	28	7
	1.3%	0.1%	1.1%	2.5%	3.0%	6.6%	17.4%	28.9%	28.9%	6.9%	2.9%	0.3%	0.1%

Counter #2

Speed Grand Totals

mph	Hourly Averages											Combined	
	0- <15	15- <20	20- <25	25- <30	30- <35	35- <40	40- <45	45- <50	50- <55	55- <60	60- <65		65- <70
Total	4.7	0.0	0.1	0.3	0.2	0.8	1.1	0.8	1.0	0.2	0.0	0.0	0.1
12:00 AM	0.0	0.0	0.1	0.3	0.2	0.8	1.1	0.8	1.0	0.2	0.0	0.0	0.1
1:00 AM	0.0	0.0	0.1	0.0	0.1	0.6	0.4	0.6	0.6	0.2	0.0	0.0	0.0
2:00 AM	0.0	0.0	0.1	0.2	0.1	0.4	0.4	0.4	0.1	0.0	0.0	0.0	0.0
3:00 AM	0.0	0.0	0.2	0.4	0.2	0.2	0.4	0.4	0.1	0.0	0.0	0.0	0.0
4:00 AM	0.0	0.0	0.0	0.1	0.1	0.2	0.6	1.3	1.1	0.2	0.0	0.0	0.0
5:00 AM	0.1	0.0	0.1	0.6	0.6	0.7	1.9	3.4	3.0	0.6	0.4	0.0	0.0
6:00 AM	2.2	0.0	0.5	1.2	0.5	2.6	5.1	8.3	10.3	1.6	0.5	0.0	0.0
7:00 AM	47.1	0.0	0.1	1.6	1.3	2.4	8.4	12.5	15.8	3.1	1.7	0.1	0.0
8:00 AM	55.6	0.0	0.8	1.5	3.1	3.2	9.6	17.3	14.1	3.3	2.3	0.3	0.1
9:00 AM	55.5	0.1	0.4	0.5	1.9	3.3	9.3	16.5	16.3	2.1	0.3	0.1	0.1
10:00 AM	66.6	0.2	0.3	0.8	1.5	3.6	10.9	19.3	21.5	4.3	3.2	0.3	0.1
11:00 AM	71.5	0.2	0.4	1.2	1.0	5.1	9.9	20.9	23.0	6.5	2.9	0.3	0.1
12:00 PM	76.7	0.5	0.4	1.7	1.5	4.1	12.6	22.5	23.4	6.4	2.7	0.1	0.3
1:00 PM	77.5	0.7	0.2	0.8	1.6	4.1	11.4	22.6	24.9	6.6	2.6	0.4	0.3
2:00 PM	78.5	1.8	0.5	1.3	2.1	4.8	10.1	21.1	25.4	7.0	3.3	0.4	0.1
3:00 PM	83.9	1.6	0.9	0.9	2.2	4.3	10.3	24.6	26.1	4.3	0.3	0.4	0.4
4:00 PM	84.6	0.8	0.4	1.4	2.4	4.2	9.6	24.4	29.2	7.6	3.1	0.6	0.2
5:00 PM	85.1	0.8	0.1	1.7	3.0	3.9	12.0	23.9	29.2	6.6	3.1	0.8	0.1
6:00 PM	71.3	0.6	0.4	1.6	1.8	3.8	9.6	21.6	23.3	2.4	0.2	0.3	0.3
7:00 PM	54.3	0.7	0.2	1.4	1.8	4.5	12.1	16.0	12.8	2.1	1.8	0.3	0.1
8:00 PM	38.8	0.5	0.1	1.1	1.5	4.1	8.6	11.7	8.6	1.6	0.6	0.1	0.1
9:00 PM	24.3	0.0	0.3	0.5	1.1	2.8	5.1	7.6	5.1	1.3	0.6	0.0	0.1
10:00 PM	16.0	0.2	0.1	0.2	1.1	1.8	3.1	4.5	3.4	1.1	0.2	0.1	0.1
11:00 PM	8.3	0.0	0.3	0.3	0.5	1.1	1.4	1.7	1.9	0.6	0.0	0.0	0.1
Daily Average	1053.6	11.8	4.0	21.8	30.9	66.3	163.5	303.5	320.3	78.0	36.2	4.6	2.5
Average (Mean)	47.4 mph	Minimum	10.2 mph	Maximum	86.7 mph	Pace Range 43.3 - 53.3 mph 10187 vehicles (61.4%)							
Percentile Speeds (mph)	10%	15%	50%	85%	90%								
	38.0	40.5	49.0	54.8	56.4								
Speeds Exceeded	25 mph	35 mph	45 mph	55 mph	65 mph								
	97.7% (16206)	92.7% (15373)	70.9% (11755)	11.7% (1938)	0.7% (111)								
	1.1%	0.4%	0.8%	2.9%	6.3%								
	187	63	131	344	1045								
Total	16587	15587	15587	15587	15587								
Combined	16587	63	131	344	1045	2573	4777	5040	1226	601	72	39	
Southbound	8302	51	42	135	498	1132	2381	2648	555	363	44	32	
Northbound	8285	110	89	209	547	1441	2396	2392	571	238	28	7	
	1.3%	0.1%	1.1%	2.5%	6.6%	17.4%	28.9%	28.9%	6.9%	2.9%	0.3%	0.1%	

*Counter #2*

Classification Grand Totals

Hourly Averages

Southbound

Interval Start	Total	Motor Bikes	Cars & Trailers	2 Axle Long	Buses	2 Axle 6 Tire	3 Axle Single	4 Axle Single	<5 Axle Double	5 Axle Double	>6 Axle Double	<6 Axle Multi	6 Axle Multi	>6 Axle Multi
12:00 AM	3.2	0.1	1.6	0.8	0.0	0.4	0.0	0.0	0.3	0.0	0.0	0.0	0.0	0.0
1:00 AM	1.3	0.1	0.9	0.1	0.0	0.1	0.0	0.0	0.0	0.0	0.0	0.0	0.0	0.0
2:00 AM	0.4	0.0	0.3	0.1	0.0	0.1	0.0	0.0	0.0	0.0	0.0	0.0	0.0	0.0
3:00 AM	0.8	0.1	0.4	0.1	0.0	0.1	0.0	0.0	0.1	0.0	0.0	0.0	0.0	0.0
4:00 AM	0.7	0.0	0.7	0.0	0.0	0.0	0.0	0.0	0.0	0.0	0.0	0.0	0.0	0.0
5:00 AM	1.6	0.0	1.1	0.4	0.0	0.0	0.0	0.0	0.1	0.0	0.0	0.0	0.0	0.0
6:00 AM	6.4	0.0	3.4	1.3	0.0	0.3	0.0	0.0	1.4	0.0	0.0	0.0	0.0	0.0
7:00 AM	13.6	0.0	7.3	3.5	0.0	1.0	0.0	0.0	1.2	0.0	0.0	0.0	0.0	0.0
8:00 AM	18.9	0.1	8.9	6.1	0.1	2.5	0.1	0.0	1.1	0.0	0.0	0.0	0.0	0.0
9:00 AM	22.3	0.0	12.1	6.4	0.1	2.9	0.1	0.0	0.7	0.0	0.0	0.0	0.0	0.0
10:00 AM	28.6	0.5	17.1	6.7	0.0	2.5	0.4	0.0	1.4	0.0	0.0	0.0	0.0	0.0
11:00 AM	30.5	0.0	19.3	7.5	0.1	3.0	0.1	0.0	0.7	0.0	0.0	0.0	0.0	0.0
12:00 PM	35.7	0.3	21.5	8.3	0.1	4.7	0.1	0.0	0.7	0.0	0.0	0.0	0.0	0.0
1:00 PM	41.3	0.3	24.0	10.1	0.1	5.1	0.0	0.0	1.7	0.0	0.0	0.0	0.0	0.0
2:00 PM	44.0	0.2	28.1	9.9	0.4	3.8	0.1	0.0	1.6	0.0	0.0	0.0	0.0	0.0
3:00 PM	46.9	0.8	29.1	10.9	0.0	4.8	0.0	0.0	1.4	0.0	0.0	0.0	0.0	0.0
4:00 PM	51.4	0.6	34.0	10.5	0.6	4.1	0.0	0.0	1.7	0.0	0.0	0.0	0.0	0.0
5:00 PM	48.9	0.8	33.7	9.4	0.1	4.1	0.0	0.0	0.9	0.0	0.0	0.0	0.0	0.0
6:00 PM	40.6	0.3	27.1	7.1	0.3	4.7	0.0	0.0	1.1	0.0	0.0	0.1	0.0	0.0
7:00 PM	31.6	0.3	23.8	5.7	0.0	1.6	0.0	0.0	0.3	0.0	0.0	0.0	0.0	0.0
8:00 PM	24.8	0.3	17.0	4.8	0.0	2.7	0.0	0.0	0.1	0.0	0.0	0.0	0.0	0.0
9:00 PM	15.7	0.2	11.4	2.7	0.0	1.3	0.0	0.0	0.1	0.0	0.0	0.0	0.0	0.0
10:00 PM	10.9	0.3	7.6	2.4	0.0	0.6	0.0	0.0	0.0	0.0	0.0	0.0	0.0	0.0
11:00 PM	6.0	0.4	4.5	0.8	0.0	0.3	0.0	0.0	0.0	0.0	0.0	0.0	0.0	0.0
Daily Average	526.2	5.5	334.9	115.7	2.3	50.6	0.9	0.0	16.2	0.0	0.0	0.1	0.0	0.0

Study Grand Totals

Total	Motor Bikes	Cars & Trailers	2 Axle Long	Buses	2 Axle 6 Tire	3 Axle Single	4 Axle Single	<5 Axle Double	5 Axle Double	>6 Axle Double	<6 Axle Multi	6 Axle Multi	>6 Axle Multi
8302	87	5288	1822	37	797	14	0	256	0	0	1	0	0
	1.0%	63.7%	21.9%	0.4%	9.6%	0.2%	0.0%	3.1%	0.0%	0.0%	0.0%	0.0%	0.0%

Counter # 2

Classification Grand Totals

Interval Start	Hourly Averages													
	Total	Motor Bikes	Cars & Trailers	2 Axle Long	Buses	2 Axle 6 Tire	3 Axle Single	4 Axle Single	<5 Axle Double	5 Axle Double	>6 Axle Double	<6 Axle Multi	6 Axle Multi	>6 Axle Multi
12:00 AM	1.5	0.1	0.6	0.6	0.0	0.1	0.0	0.0	0.1	0.0	0.0	0.0	0.0	0.0
1:00 AM	1.4	0.0	1.3	0.4	0.0	0.0	0.0	0.0	0.0	0.0	0.0	0.0	0.0	0.0
2:00 AM	0.8	0.0	0.4	0.4	0.0	0.0	0.0	0.0	0.0	0.0	0.0	0.0	0.0	0.0
3:00 AM	1.3	0.0	1.0	0.3	0.0	0.1	0.0	0.0	0.0	0.0	0.0	0.0	0.0	0.0
4:00 AM	2.9	0.0	2.4	0.5	0.0	0.0	0.0	0.0	0.0	0.0	0.0	0.0	0.0	0.0
5:00 AM	9.5	0.0	5.8	2.3	0.0	1.4	0.0	0.0	0.0	0.0	0.0	0.0	0.0	0.0
6:00 AM	26.3	0.0	19.1	5.7	0.5	0.9	0.0	0.0	0.0	0.0	0.0	0.0	0.0	0.0
7:00 AM	33.4	0.0	21.1	9.1	0.6	2.6	0.0	0.0	0.0	0.0	0.0	0.0	0.0	0.0
8:00 AM	36.8	0.2	25.1	6.9	0.0	4.0	0.1	0.0	0.5	0.0	0.0	0.0	0.0	0.0
9:00 AM	33.3	0.1	22.9	6.7	0.1	2.8	0.1	0.0	0.5	0.0	0.0	0.0	0.0	0.0
10:00 AM	38.0	0.1	23.0	9.6	0.2	3.6	0.1	0.0	1.1	0.0	0.0	0.0	0.0	0.0
11:00 AM	40.9	0.5	24.2	10.1	0.2	3.6	0.1	0.0	2.2	0.0	0.0	0.0	0.0	0.0
12:00 PM	41.0	0.5	24.9	10.1	0.3	3.8	0.1	0.0	1.4	0.0	0.0	0.0	0.0	0.0
1:00 PM	36.2	0.5	22.1	9.1	0.0	3.1	0.1	0.0	1.3	0.0	0.0	0.0	0.0	0.0
2:00 PM	34.5	0.3	21.2	7.3	0.6	3.8	0.0	0.0	1.3	0.0	0.0	0.0	0.0	0.0
3:00 PM	37.0	0.6	22.4	8.1	0.1	3.6	0.0	0.0	2.3	0.0	0.0	0.0	0.0	0.0
4:00 PM	33.2	0.4	19.0	8.9	0.6	3.3	0.1	0.0	0.9	0.0	0.0	0.0	0.0	0.0
5:00 PM	36.3	0.6	23.9	8.1	0.0	2.8	0.0	0.0	0.8	0.0	0.0	0.0	0.0	0.0
6:00 PM	30.7	0.8	19.4	6.9	0.1	2.4	0.0	0.0	1.0	0.0	0.0	0.0	0.0	0.0
7:00 PM	22.6	0.5	15.8	4.5	0.0	1.1	0.0	0.0	0.7	0.0	0.0	0.0	0.0	0.0
8:00 PM	14.0	0.4	10.1	2.3	0.0	1.0	0.0	0.0	0.3	0.0	0.0	0.0	0.0	0.0
9:00 PM	8.6	0.2	6.3	1.4	0.1	0.8	0.0	0.0	0.0	0.0	0.0	0.0	0.0	0.0
10:00 PM	5.1	0.1	3.9	0.8	0.0	0.3	0.0	0.0	0.0	0.0	0.0	0.0	0.0	0.0
11:00 PM	2.3	0.1	1.8	0.4	0.1	0.1	0.0	0.0	0.0	0.0	0.0	0.0	0.0	0.0
Daily Average	527.4	5.9	337.8	119.9	3.3	45.3	0.8	0.0	14.5	0.0	0.0	0.0	0.0	0.0

Study Grand Totals

Northbound	Total	Motor Bikes	Cars & Trailers	2 Axle Long	Buses	2 Axle 6 Tire	3 Axle Single	4 Axle Single	<5 Axle Double	5 Axle Double	>6 Axle Double	<6 Axle Multi	6 Axle Multi	>6 Axle Multi
	8285	93	5309	1882	52	711	12	0	226	0	0	0	0	0
		1.1%	64.1%	22.7%	0.6%	8.6%	0.1%	0.0%	2.7%	0.0%	0.0%	0.0%	0.0%	0.0%

Counter #2

Classification Grand Totals

Hourly Averages  
 Combined

Interval Start	Total	Motor Bikes	Cars & Trailers	2 Axle Long	Buses	2 Axle 6 Tire	3 Axle Single	4 Axle Single	<5 Axle Double	5 Axle Double	>6 Axle Double	<6 Axle Multi	6 Axle Multi	>6 Axle Multi
12:00 AM	4.7	0.2	2.2	1.4	0.0	0.6	0.0	0.0	0.3	0.0	0.0	0.0	0.0	0.0
1:00 AM	2.6	0.1	2.2	0.3	0.0	0.1	0.0	0.0	0.0	0.0	0.0	0.0	0.0	0.0
2:00 AM	1.2	0.0	0.6	0.5	0.0	0.1	0.0	0.0	0.0	0.0	0.0	0.0	0.0	0.0
3:00 AM	2.1	0.1	1.4	0.4	0.0	0.1	0.0	0.0	0.1	0.0	0.0	0.0	0.0	0.0
4:00 AM	3.6	0.0	3.1	0.5	0.0	0.0	0.0	0.0	0.0	0.0	0.0	0.0	0.0	0.0
5:00 AM	11.1	0.0	6.9	2.8	0.0	1.4	0.0	0.0	0.0	0.0	0.0	0.0	0.0	0.0
6:00 AM	32.7	0.0	22.6	7.0	0.6	1.2	0.0	0.0	1.4	0.0	0.0	0.0	0.0	0.0
7:00 AM	47.1	0.0	28.4	12.6	1.3	3.6	0.0	0.0	1.2	0.0	0.0	0.0	0.0	0.0
8:00 AM	55.6	0.3	34.1	13.0	0.1	6.5	0.2	0.0	1.6	0.0	0.0	0.0	0.0	0.0
9:00 AM	55.5	0.1	35.1	13.1	0.2	5.7	0.3	0.0	1.2	0.0	0.0	0.0	0.0	0.0
10:00 AM	66.6	0.6	40.1	16.3	0.0	6.4	0.7	0.0	2.5	0.0	0.0	0.0	0.0	0.0
11:00 AM	71.5	0.5	43.5	17.5	0.3	6.6	0.3	0.0	2.9	0.0	0.0	0.0	0.0	0.0
12:00 PM	76.7	0.8	46.4	18.4	0.4	8.5	0.1	0.0	2.1	0.0	0.0	0.0	0.0	0.0
1:00 PM	77.5	0.8	46.1	19.2	0.1	8.3	0.1	0.0	3.0	0.0	0.0	0.0	0.0	0.0
2:00 PM	78.5	0.5	49.3	17.1	1.0	7.6	0.1	0.0	2.9	0.0	0.0	0.0	0.0	0.0
3:00 PM	83.9	1.3	51.5	18.9	0.1	8.4	0.0	0.0	3.8	0.0	0.0	0.0	0.0	0.0
4:00 PM	84.6	1.0	53.0	19.4	1.1	7.4	0.1	0.0	2.6	0.0	0.0	0.0	0.0	0.0
5:00 PM	85.1	1.4	57.6	17.5	0.1	6.8	0.0	0.0	1.7	0.0	0.0	0.0	0.0	0.0
6:00 PM	71.3	1.0	46.6	14.1	0.4	7.1	0.0	0.0	2.1	0.0	0.0	0.1	0.0	0.0
7:00 PM	54.3	0.8	39.6	10.2	0.0	2.8	0.0	0.0	0.9	0.0	0.0	0.0	0.0	0.0
8:00 PM	38.8	0.7	27.1	7.0	0.0	3.7	0.0	0.0	0.3	0.0	0.0	0.0	0.0	0.0
9:00 PM	24.3	0.4	17.6	4.1	0.1	2.1	0.0	0.0	0.1	0.0	0.0	0.0	0.0	0.0
10:00 PM	16.0	0.4	11.6	3.2	0.0	0.9	0.0	0.0	0.0	0.0	0.0	0.0	0.0	0.0
11:00 PM	8.3	0.4	6.3	1.2	0.1	0.4	0.0	0.0	0.0	0.0	0.0	0.0	0.0	0.0
Daily Average	1053.6	11.4	672.6	235.6	5.6	95.9	1.7	0.0	30.7	0.0	0.0	0.1	0.0	0.0

Study Grand Totals

Category	Total	Motor Bikes	Cars & Trailers	2 Axle Long	Buses	2 Axle 6 Tire	3 Axle Single	4 Axle Single	<5 Axle Double	5 Axle Double	>6 Axle Double	<6 Axle Multi	6 Axle Multi	>6 Axle Multi
Combined	16587	180	10597	3704	89	1508	25	0	482	0	0	1	0	0
Southbound	8302	87	5288	1822	37	797	14	0	256	0	0	1	0	0
Northbound	8285	93	5309	1882	52	711	12	0	226	0	0	0	0	0



Counter # 3

Site: Duckett Mill Rd  
Tuesday, 10/1/2024 1:15 PM -  
Thursday, 10/17/2024 9:15 AM

Volume Grand Totals

**Average Hourly Volumes**

	Westbound	Eastbound	Combined
12:00 AM	2.7	1.0	3.7
1:00 AM	1.3	1.4	2.7
2:00 AM	0.4	0.6	1.1
3:00 AM	0.8	0.6	1.3
4:00 AM	0.6	2.9	3.5
5:00 AM	1.6	8.7	10.3
6:00 AM	6.9	22.2	29.1
7:00 AM	10.9	28.8	39.7
8:00 AM	15.5	28.2	43.7
9:00 AM	20.0	28.1	48.1
10:00 AM	23.7	33.0	56.7
11:00 AM	26.0	35.9	61.9
12:00 PM	29.0	33.4	62.4
1:00 PM	34.8	31.5	66.3
2:00 PM	38.6	28.8	67.4
3:00 PM	37.7	30.8	68.4
4:00 PM	43.9	27.9	71.8
5:00 PM	40.3	29.8	70.1
6:00 PM	34.2	24.6	58.8
7:00 PM	26.1	19.1	45.2
8:00 PM	20.0	10.1	30.1
9:00 PM	13.8	7.7	21.5
10:00 PM	9.1	4.8	13.8
11:00 PM	5.0	1.8	6.8
Average Daily Traffic (ADT)	442.8	441.6	884.3

**Volume Totals**

	Westbound	Eastbound	Combined
	6976	6932	13908
	50.2%	49.8%	

*Counter #3*

Speed Grand Totals

mph	Hourly Averages											Daily Average	
	0 - <15	15 - <20	20 - <25	25 - <30	30 - <35	35 - <40	40 - <45	45 - <50	50 - <55	55 - <60	60 - <65		65 - <70
Total	2.7	0.0	0.0	0.1	0.1	0.2	0.7	0.7	0.6	0.2	0.2	0.0	0.0
12:00 AM	0.0	0.0	0.0	0.1	0.1	0.2	0.7	0.7	0.6	0.2	0.2	0.0	0.0
1:00 AM	0.0	0.0	0.0	0.0	0.2	0.0	0.4	0.3	0.1	0.1	0.2	0.0	0.0
2:00 AM	0.0	0.0	0.0	0.0	0.0	0.1	0.2	0.1	0.1	0.1	0.0	0.0	0.0
3:00 AM	0.0	0.0	0.0	0.0	0.1	0.1	0.3	0.1	0.1	0.1	0.0	0.0	0.0
4:00 AM	0.0	0.0	0.0	0.0	0.0	0.1	0.1	0.1	0.2	0.1	0.0	0.0	0.0
5:00 AM	0.0	0.0	0.0	0.0	0.0	0.1	0.3	0.2	0.6	0.3	0.1	0.1	0.0
6:00 AM	0.0	0.0	0.0	0.0	0.2	0.9	1.6	1.5	1.9	0.6	0.2	0.1	0.0
7:00 AM	0.0	0.0	0.0	0.0	0.1	0.3	1.5	3.4	3.5	1.1	0.6	0.2	0.1
8:00 AM	0.0	0.0	0.0	0.0	0.1	0.6	2.2	4.7	5.4	1.3	1.0	0.2	0.0
9:00 AM	0.0	0.0	0.1	0.1	0.2	0.9	2.7	6.1	6.5	1.9	1.1	0.3	0.1
10:00 AM	0.1	0.1	0.0	0.3	0.4	1.1	3.3	6.2	7.8	2.7	1.4	0.3	0.0
11:00 AM	0.1	0.0	0.1	0.1	0.7	0.7	3.9	8.3	7.9	3.1	1.5	0.1	0.3
12:00 PM	0.0	0.0	0.0	0.1	0.2	0.9	4.8	8.5	9.3	3.3	1.7	0.1	0.1
1:00 PM	0.0	0.1	0.0	0.1	1.2	1.2	4.5	11.3	11.9	3.5	1.6	0.3	0.1
2:00 PM	0.0	0.1	0.0	0.4	2.2	2.2	4.6	11.1	13.3	4.9	1.9	0.1	0.1
3:00 PM	0.1	0.0	0.0	0.2	1.9	1.9	4.2	10.2	14.8	4.1	1.7	0.3	0.2
4:00 PM	0.0	0.0	0.1	0.3	0.9	0.9	4.5	13.4	16.6	4.5	2.9	0.4	0.3
5:00 PM	0.0	0.1	0.0	0.4	0.9	0.9	4.9	13.2	13.4	4.5	2.3	0.4	0.1
6:00 PM	0.0	0.0	0.1	0.4	1.3	1.3	3.9	11.7	11.8	3.4	1.5	0.0	0.0
7:00 PM	0.0	0.0	0.3	0.9	1.9	1.9	4.9	7.5	7.8	2.0	0.4	0.1	0.2
8:00 PM	0.0	0.1	0.0	0.4	1.6	1.6	4.6	5.3	5.6	1.6	0.7	0.1	0.0
9:00 PM	0.0	0.0	0.1	0.5	1.1	1.1	2.7	4.4	3.6	0.8	0.4	0.1	0.0
10:00 PM	0.0	0.0	0.0	0.4	0.9	0.9	1.6	2.9	2.3	0.3	0.2	0.2	0.0
11:00 PM	0.0	0.0	0.0	0.3	0.5	0.5	1.2	1.1	0.9	0.4	0.4	0.1	0.1
Daily Average	442.8	0.3	0.5	1.6	5.8	20.4	63.5	132.2	145.9	44.7	22.1	3.4	1.4

Face Range 43.3 - 53.3 mph 4395 vehicles (63.2%)

Maximum 86.7 mph

Minimum 10.1 mph

Average (Mean) 49.5 mph

Percentile Speeds (mph)  
 10% 41.4  
 50% 49.0  
 85% 56.4

Speeds Exceeded  
 25 mph 99.6% (6926)  
 35 mph 98.0% (6809)  
 45 mph 79.0% (5490)  
 55 mph 16.2% (1124)  
 55 mph 1.1% (76)  
 75 mph 0.1% (9)

Study Grand Totals

mph	Hourly Averages											Daily Average	
	0 - <15	15 - <20	20 - <25	25 - <30	30 - <35	35 - <40	40 - <45	45 - <50	50 - <55	55 - <60	60 - <65		65 - <70
Total	4	8	13	25	92	322	997	2075	2291	701	347	54	22
Westbound	0.1%	0.1%	0.2%	0.4%	1.3%	4.6%	14.3%	29.9%	33.0%	10.1%	5.0%	0.8%	0.3%

Counter #3

Speed Grand Totals

mph	Hourly Averages											Daily Average	
	0- <15	15- <20	20- <25	25- <30	30- <35	35- <40	40- <45	45- <50	50- <55	55- <60	60- <65		65- <70
12:00 AM	1.0	0.0	0.0	0.1	0.3	0.2	0.1	0.0	0.0	0.1	0.0	0.0	0.0
1:00 AM	1.4	0.0	0.0	0.0	0.3	0.4	0.2	0.0	0.0	0.0	0.0	0.0	0.0
2:00 AM	0.6	0.0	0.0	0.1	0.2	0.2	0.1	0.0	0.0	0.0	0.0	0.0	0.0
3:00 AM	0.6	0.0	0.0	0.1	0.1	0.2	0.1	0.0	0.0	0.0	0.0	0.0	0.0
4:00 AM	2.9	0.0	0.0	0.1	0.2	0.6	0.3	0.1	0.0	0.1	0.0	0.0	0.0
5:00 AM	8.7	0.0	0.1	0.4	1.3	2.4	1.6	0.6	0.1	0.1	0.0	0.0	0.0
6:00 AM	22.2	0.0	0.0	0.4	2.0	5.6	2.5	0.6	0.1	0.1	0.0	0.0	0.0
7:00 AM	28.8	0.0	0.0	0.5	1.2	7.5	7.1	1.1	0.0	0.0	0.0	0.1	0.0
8:00 AM	28.2	0.0	0.0	0.4	2.0	6.9	10.3	2.1	0.1	0.0	0.0	0.0	0.0
9:00 AM	28.1	0.1	0.0	0.5	1.5	8.1	9.2	6.0	0.3	0.1	0.0	0.0	0.0
10:00 AM	33.0	0.3	0.3	0.8	3.3	8.8	10.4	6.6	0.1	0.0	0.0	0.0	0.0
11:00 AM	35.9	0.0	0.0	0.7	2.5	7.8	13.1	8.3	0.3	0.1	0.0	0.0	0.0
12:00 PM	33.4	0.0	0.1	0.3	2.0	7.5	11.0	8.5	0.1	0.1	0.0	0.0	0.0
1:00 PM	31.5	0.0	0.0	0.2	1.7	6.9	10.9	7.7	0.3	0.3	0.1	0.0	0.0
2:00 PM	28.8	0.0	0.1	0.2	1.4	5.3	9.6	8.1	0.5	0.1	0.0	0.1	0.0
3:00 PM	30.8	0.0	0.1	0.3	1.8	5.8	10.9	7.7	0.4	0.3	0.0	0.0	0.0
4:00 PM	27.9	0.1	0.0	0.4	1.6	4.9	9.3	7.7	0.2	0.2	0.1	0.0	0.0
5:00 PM	29.8	0.0	0.0	0.3	1.8	5.4	10.6	8.6	0.2	0.1	0.1	0.0	0.0
6:00 PM	24.6	0.0	0.0	0.5	1.9	5.8	7.9	6.3	0.3	0.1	0.1	0.0	0.0
7:00 PM	19.1	0.1	0.1	0.8	1.9	5.9	6.0	6.3	0.3	0.3	0.1	0.0	0.0
8:00 PM	10.1	0.0	0.0	0.2	1.2	1.8	3.4	3.3	0.7	0.3	0.1	0.0	0.0
9:00 PM	7.7	0.0	0.0	0.3	0.6	2.6	1.9	2.4	0.9	0.1	0.0	0.0	0.0
10:00 PM	4.8	0.0	0.0	0.3	0.6	1.7	1.1	1.6	0.7	0.0	0.0	0.0	0.0
11:00 PM	1.8	0.0	0.0	0.1	0.2	0.7	0.4	0.8	0.3	0.1	0.0	0.0	0.0
Daily Average	441.6	0.5	0.8	7.8	31.2	103.0	148.8	106.5	35.4	3.5	1.6	0.4	0.1

Pace Range 36.5 - 46.5 mph 4624 vehicles (67.0%)

Average (Mean) 42.3 mph  
 10% 35.1  
 50% 42.3  
 90% 49.0

Speeds Exceeded  
 25 mph 99.3% (6855)  
 35 mph 90.4% (6243)  
 45 mph 33.4% (2308)

Study Grand Totals

mph	Count	Percentage
0-15	8	0.1%
15-20	12	0.2%
20-25	28	0.4%
25-30	123	1.8%
30-35	489	7.1%
35-40	1609	23.3%
40-45	2326	33.7%
45-50	1567	24.1%
50-55	552	8.0%
55-60	55	0.8%
60-65	25	0.4%
65-70	7	0.1%
70-200	2	0.0%
<b>Total</b>	<b>6903</b>	

Counter # 3

Speed Grand Totals

mph	Hourly Averages											Total	Daily Average		
	0 - < 15	15 - < 20	20 - < 25	25 - < 30	30 - < 35	35 - < 40	40 - < 45	45 - < 50	50 - < 55	55 - < 60	60 - < 65			65 - < 70	70 - < 200
12:00 AM	0.0	0.0	0.0	0.3	0.3	0.5	0.9	0.8	0.6	0.3	0.2	0.0	0.0	3.7	0.8
1:00 AM	0.0	0.1	0.0	0.0	0.5	0.4	0.9	0.4	0.1	0.1	0.2	0.0	0.0	2.7	1.3
2:00 AM	0.0	0.0	0.0	0.1	0.2	0.3	0.3	0.1	0.1	0.1	0.0	0.0	0.0	1.1	0.4
3:00 AM	0.0	0.0	0.0	0.1	0.2	0.3	0.3	0.3	0.1	0.1	0.0	0.0	0.0	1.3	0.5
4:00 AM	0.0	0.0	0.0	0.1	0.2	0.7	1.6	0.4	0.3	0.2	0.0	0.0	0.0	3.5	0.9
5:00 AM	0.0	0.1	0.0	0.4	1.3	2.5	2.8	1.6	1.1	0.4	0.1	0.0	0.0	10.3	1.1
6:00 AM	0.0	0.0	0.1	0.4	2.2	6.4	8.7	7.3	3.0	0.6	0.2	0.0	0.0	29.1	1.1
7:00 AM	0.0	0.0	0.2	0.5	1.3	7.8	11.8	10.6	5.6	1.1	0.2	0.0	0.0	39.7	1.1
8:00 AM	0.0	0.0	0.1	0.4	2.1	7.6	13.0	10.7	7.0	1.5	0.6	0.1	0.1	43.7	1.1
9:00 AM	0.1	0.0	0.2	0.5	1.7	9.1	11.9	12.7	8.5	2.0	1.1	0.2	0.0	48.1	1.1
10:00 AM	0.4	0.4	0.4	1.1	3.7	9.9	13.7	12.5	9.9	2.9	1.5	0.3	0.0	56.7	1.1
11:00 AM	0.1	0.0	0.2	0.9	2.6	8.5	17.1	16.5	11.1	3.2	1.5	0.1	0.0	61.9	1.1
12:00 PM	0.0	0.1	0.0	0.4	2.2	8.5	15.8	17.0	12.7	3.6	1.9	0.2	0.1	62.4	1.1
1:00 PM	0.0	0.1	0.1	0.3	1.5	8.1	15.4	19.0	15.5	4.0	1.7	0.3	0.1	66.3	1.1
2:00 PM	0.0	0.2	0.2	0.3	1.8	7.4	14.3	19.2	16.5	5.3	2.1	0.1	0.1	67.4	1.1
3:00 PM	0.1	0.1	0.2	0.4	1.9	7.7	15.1	17.9	18.2	4.3	2.1	0.4	0.2	68.4	1.1
4:00 PM	0.1	0.0	0.4	0.4	1.8	5.9	13.8	22.4	18.6	4.7	2.9	0.5	0.3	71.8	1.1
5:00 PM	0.0	0.1	0.0	0.3	2.1	6.4	15.5	21.8	16.1	4.8	2.4	0.6	0.2	70.1	1.1
6:00 PM	0.0	0.0	0.1	0.6	2.3	7.0	11.8	18.0	13.7	3.8	1.6	0.1	0.0	58.8	1.1
7:00 PM	0.1	0.1	0.3	1.1	2.8	7.8	10.9	10.8	8.4	2.3	0.5	0.1	0.0	45.2	1.1
8:00 PM	0.0	0.1	0.1	0.3	1.6	3.4	8.0	7.6	6.6	1.8	0.7	0.1	0.0	30.1	1.1
9:00 PM	0.0	0.0	0.1	0.4	1.1	3.6	4.6	6.1	4.3	0.8	0.4	0.1	0.0	21.5	1.1
10:00 PM	0.0	0.0	0.0	0.3	0.9	2.6	2.8	3.6	2.6	0.3	0.6	0.2	0.0	13.8	1.1
11:00 PM	0.0	0.0	0.0	0.1	0.5	1.2	1.6	1.4	1.1	0.4	0.4	0.1	0.0	6.8	1.1
Daily Average	0.8	1.3	2.6	9.4	37.1	123.4	212.3	238.7	181.3	48.2	23.7	3.9	1.5	894.3	1.5
Average (Mean)	45.9 mph	Minimum 10.1 mph	Maximum 88.7 mph												
Percentile Speeds (mph)	10% 37.2	15% 38.8	50% 45.4	85% 53.2	90% 54.8										
Speeds Exceeded	25 mph 99.5% (13781)	35 mph 94.2% (13052)	45 mph 56.3% (7798)	55 mph 8.8% (1213)	65 mph 0.6% (85)	75 mph 0.1% (10)									
Study Grand Totals	0 - < 15 12	15 - < 20 20	20 - < 25 41	25 - < 30 148	30 - < 35 581	35 - < 40 1931	40 - < 45 3323	45 - < 50 3742	50 - < 55 2843	55 - < 60 756	60 - < 65 372	65 - < 70 61	70 - < 200 24	13854	
Westbound	0.1%	0.1%	0.3%	1.1%	4.2%	13.9%	24.0%	27.0%	20.5%	5.5%	2.7%	0.4%	0.2%	6951	
Eastbound	0.1%	0.1%	0.2%	0.4%	1.3%	4.6%	14.3%	29.9%	33.0%	10.1%	5.0%	0.8%	0.3%	6903	
Combined	0.1%	0.2%	0.4%	1.8%	7.1%	23.3%	33.7%	24.1%	8.0%	0.8%	0.4%	0.1%	0.0%	13854	

Counter #3

Classification Grand Totals

Hourly Averages

Interval Start	Total	Motor Bikes	Cars & Trailers	2 Axle Long	Buses	Westbound						6 Axle Multi	>6 Axle Multi	
						2 Axle Tire	3 Axle Single	4 Axle Single	<5 Axle Double	5 Axle Double	>5 Axle Double			<6 Axle Multi
12:00 AM	2.7	0.1	1.0	0.4	0.0	0.9	0.0	0.0	0.0	0.0	0.0	0.0	0.0	0.0
1:00 AM	1.3	0.1	0.9	0.0	0.0	0.2	0.0	0.0	0.0	0.0	0.0	0.0	0.0	0.0
2:00 AM	0.4	0.0	0.3	0.1	0.0	0.1	0.0	0.0	0.1	0.0	0.0	0.0	0.0	0.0
3:00 AM	0.8	0.1	0.4	0.0	0.0	0.2	0.0	0.0	0.1	0.0	0.0	0.0	0.0	0.0
4:00 AM	0.6	0.0	0.5	0.1	0.0	0.0	0.0	0.0	0.0	0.0	0.0	0.0	0.0	0.0
5:00 AM	1.6	0.0	1.1	0.4	0.0	0.0	0.0	0.0	0.1	0.0	0.0	0.0	0.0	0.0
6:00 AM	6.9	0.0	3.2	1.0	0.6	0.4	0.0	0.0	1.7	0.0	0.0	0.0	0.0	0.0
7:00 AM	10.9	0.0	3.3	3.6	0.6	1.8	0.0	0.0	1.6	0.0	0.0	0.0	0.0	0.0
8:00 AM	15.5	0.1	5.6	4.6	0.1	3.9	0.1	0.0	1.2	0.0	0.0	0.0	0.0	0.0
9:00 AM	20.0	0.0	8.7	5.6	0.0	4.5	0.2	0.0	1.0	0.0	0.0	0.0	0.0	0.0
10:00 AM	23.7	0.4	11.7	5.2	0.3	4.1	0.2	0.0	1.8	0.0	0.0	0.0	0.0	0.0
11:00 AM	26.0	0.1	14.1	5.7	0.2	5.0	0.1	0.0	0.9	0.0	0.0	0.0	0.0	0.0
12:00 PM	29.0	0.3	14.5	6.7	0.1	6.3	0.0	0.0	1.1	0.0	0.0	0.0	0.0	0.0
1:00 PM	34.8	0.4	17.5	6.7	0.2	7.8	0.0	0.0	2.2	0.0	0.0	0.0	0.0	0.0
2:00 PM	38.6	0.2	21.9	7.3	0.7	6.4	0.1	0.0	2.1	0.0	0.0	0.0	0.0	0.0
3:00 PM	37.7	0.9	21.0	6.4	0.1	7.4	0.0	0.0	1.9	0.0	0.0	0.0	0.0	0.0
4:00 PM	43.9	0.5	24.4	8.2	0.6	8.1	0.0	0.0	2.1	0.0	0.0	0.0	0.0	0.0
5:00 PM	40.3	0.7	23.4	7.4	0.1	7.6	0.0	0.0	1.1	0.0	0.0	0.0	0.0	0.0
6:00 PM	34.2	0.3	19.3	5.9	0.3	7.1	0.0	0.0	1.4	0.0	0.0	0.0	0.0	0.0
7:00 PM	26.1	0.3	17.9	4.3	0.1	3.3	0.0	0.0	0.3	0.0	0.0	0.0	0.0	0.0
8:00 PM	20.0	0.4	11.9	3.5	0.0	4.1	0.0	0.0	0.1	0.0	0.0	0.0	0.0	0.0
9:00 PM	13.8	0.1	8.5	2.3	0.0	2.6	0.0	0.0	0.3	0.0	0.0	0.0	0.0	0.0
10:00 PM	9.1	0.2	5.9	1.6	0.0	1.4	0.0	0.0	0.0	0.0	0.0	0.0	0.0	0.0
11:00 PM	5.0	0.4	3.0	0.9	0.0	0.7	0.0	0.0	0.0	0.0	0.0	0.0	0.0	0.0
Daily Average	442.8	5.2	240.0	88.1	3.7	83.8	0.7	0.0	21.3	0.0	0.0	0.0	0.0	0.0

Study Grand Totals

Westbound	Total	Motor Bikes	Cars & Trailers	2 Axle Long	Buses	Westbound						6 Axle Multi	>6 Axle Multi	
						2 Axle Tire	3 Axle Single	4 Axle Single	<5 Axle Double	5 Axle Double	>5 Axle Double			<6 Axle Multi
6951	82	3774	1379	59	1313	10	0	0	334	0	0	0	0	0
	1.2%	54.3%	19.8%	0.8%	18.9%	0.1%	0.0%	0.0%	4.8%	0.0%	0.0%	0.0%	0.0%	0.0%

Counter # 3

Classification Grand Totals

Interval Start	Hourly Averages													
	Total	Motor Bikes	Cars & Trailers	2 Axle Long	Buses	2 Axle 6 Tire	3 Axle Single	4 Axle Single	<5 Axle Double	5 Axle Double	>6 Axle Double	<6 Axle Multi	6 Axle Multi	>6 Axle Multi
12:00 AM	1.0	0.0	0.5	0.4	0.0	0.0	0.0	0.0	0.1	0.0	0.0	0.0	0.0	0.0
1:00 AM	1.4	0.0	1.3	0.2	0.0	0.0	0.0	0.0	0.0	0.0	0.0	0.0	0.0	0.0
2:00 AM	0.6	0.0	0.3	0.4	0.0	0.0	0.0	0.0	0.0	0.0	0.0	0.0	0.0	0.0
3:00 AM	0.6	0.0	0.3	0.2	0.0	0.1	0.0	0.0	0.0	0.0	0.0	0.0	0.0	0.0
4:00 AM	2.9	0.0	2.6	0.4	0.0	0.0	0.0	0.0	0.0	0.0	0.0	0.0	0.0	0.0
5:00 AM	8.7	0.0	5.9	1.7	0.0	1.1	0.0	0.0	0.0	0.0	0.0	0.0	0.0	0.0
6:00 AM	22.2	0.0	16.6	4.4	0.6	0.6	0.0	0.0	0.0	0.0	0.0	0.0	0.0	0.0
7:00 AM	28.8	0.0	17.8	8.0	0.6	2.4	0.0	0.0	0.0	0.0	0.0	0.0	0.0	0.0
8:00 AM	28.2	0.1	18.3	6.5	0.0	2.8	0.1	0.0	0.4	0.0	0.0	0.0	0.0	0.0
9:00 AM	28.1	0.0	20.2	5.5	0.1	1.8	0.1	0.0	0.3	0.0	0.0	0.0	0.0	0.0
10:00 AM	33.0	0.1	20.7	7.9	0.1	2.7	0.3	0.0	1.2	0.0	0.0	0.0	0.0	0.0
11:00 AM	35.9	0.4	22.7	8.7	0.1	2.5	0.2	0.0	1.3	0.0	0.0	0.0	0.0	0.0
12:00 PM	33.4	0.5	20.8	8.1	0.1	2.7	0.1	0.0	1.2	0.0	0.0	0.0	0.0	0.0
1:00 PM	31.5	0.5	20.3	7.6	0.1	2.3	0.1	0.0	0.8	0.0	0.0	0.0	0.0	0.0
2:00 PM	28.8	0.2	19.1	5.8	0.7	2.3	0.0	0.0	0.8	0.0	0.0	0.0	0.0	0.0
3:00 PM	30.8	0.4	18.6	7.6	0.0	2.4	0.0	0.0	1.7	0.0	0.0	0.0	0.0	0.0
4:00 PM	27.9	0.4	16.9	7.2	0.6	2.0	0.1	0.0	0.7	0.0	0.0	0.0	0.0	0.0
5:00 PM	29.8	0.5	19.9	6.9	0.0	1.7	0.0	0.0	0.8	0.0	0.0	0.0	0.0	0.0
6:00 PM	24.6	0.6	15.9	5.8	0.1	1.6	0.0	0.0	0.7	0.0	0.0	0.0	0.0	0.0
7:00 PM	19.1	0.4	13.6	4.1	0.0	0.6	0.0	0.0	0.4	0.0	0.0	0.0	0.0	0.0
8:00 PM	10.1	0.3	7.4	1.4	0.0	0.8	0.0	0.0	0.3	0.0	0.0	0.0	0.0	0.0
9:00 PM	7.7	0.1	5.8	1.3	0.0	0.5	0.0	0.0	0.0	0.0	0.0	0.0	0.0	0.0
10:00 PM	4.8	0.1	4.1	0.4	0.0	0.1	0.0	0.0	0.0	0.0	0.0	0.0	0.0	0.0
11:00 PM	1.8	0.1	1.3	0.4	0.0	0.1	0.0	0.0	0.0	0.0	0.0	0.0	0.0	0.0
Daily Average	441.6	4.7	290.7	100.8	3.0	30.9	0.9	0.0	10.6	0.0	0.0	0.0	0.0	0.0

Study Grand Totals

Motor Bikes	Cars & Trailers	2 Axle Long	Buses	2 Axle 6 Tire	3 Axle Single	4 Axle Single	<5 Axle Double	5 Axle Double	>6 Axle Double	<6 Axle Multi	6 Axle Multi	>6 Axle Multi
73	4546	1575	48	482	14	0	0	0	0	0	0	0
1.1%	65.9%	22.8%	0.7%	7.0%	0.2%	0.0%	2.4%	0.0%	0.0%	0.0%	0.0%	0.0%



Counter #3

Classification Grand Totals

Hourly Averages  
 Combined

Interval Start	Total	Motor Bikes	Cars & Trailers	2 Axle Long	Buses	2 Axle 6 Tire	3 Axle Single	4 Axle Single	<5 Axle Double	5 Axle Double	>6 Axle Double	<6 Axle Multi	6 Axle Multi	>6 Axle Multi
12:00 AM	3.7	0.1	1.5	0.9	0.0	0.9	0.0	0.0	0.4	0.0	0.0	0.0	0.0	0.0
1:00 AM	2.7	0.1	2.2	0.2	0.0	0.2	0.0	0.0	0.0	0.0	0.0	0.0	0.0	0.0
2:00 AM	1.1	0.0	0.5	0.4	0.0	0.1	0.0	0.0	0.1	0.0	0.0	0.0	0.0	0.0
3:00 AM	1.3	0.1	0.8	0.2	0.0	0.3	0.0	0.0	0.1	0.0	0.0	0.0	0.0	0.0
4:00 AM	3.5	0.0	3.1	0.4	0.0	0.0	0.0	0.0	0.0	0.0	0.0	0.0	0.0	0.0
5:00 AM	10.3	0.0	7.1	2.1	0.0	1.1	0.0	0.0	0.1	0.0	0.0	0.0	0.0	0.0
6:00 AM	29.1	0.0	19.8	5.4	1.1	1.0	0.0	0.0	1.7	0.0	0.0	0.0	0.0	0.0
7:00 AM	39.7	0.0	21.1	11.6	1.3	4.1	0.0	0.0	1.6	0.0	0.0	0.0	0.0	0.0
8:00 AM	43.7	0.2	23.8	11.1	0.1	6.7	0.3	0.0	1.6	0.0	0.0	0.0	0.0	0.0
9:00 AM	48.1	0.0	28.9	11.1	0.1	6.3	0.3	0.0	1.3	0.0	0.0	0.0	0.0	0.0
10:00 AM	56.7	0.5	32.5	13.1	0.3	6.8	0.5	0.0	3.0	0.0	0.0	0.0	0.0	0.0
11:00 AM	61.9	0.5	36.7	14.3	0.3	7.5	0.3	0.0	2.3	0.0	0.0	0.0	0.0	0.0
12:00 PM	62.4	0.7	35.3	14.8	0.3	8.9	0.1	0.0	2.3	0.0	0.0	0.0	0.0	0.0
1:00 PM	66.3	0.9	37.7	14.3	0.3	10.1	0.1	0.0	3.0	0.0	0.0	0.0	0.0	0.0
2:00 PM	67.4	0.4	41.0	13.1	1.4	8.6	0.1	0.0	2.9	0.0	0.0	0.0	0.0	0.0
3:00 PM	68.4	1.3	39.6	14.0	0.1	9.9	0.0	0.0	3.6	0.0	0.0	0.0	0.0	0.0
4:00 PM	71.8	0.9	41.4	15.4	1.1	10.1	0.1	0.0	2.8	0.0	0.0	0.0	0.0	0.0
5:00 PM	70.1	1.2	43.3	14.3	0.1	9.3	0.0	0.0	1.9	0.0	0.0	0.0	0.0	0.0
6:00 PM	58.8	0.9	35.3	11.6	0.3	8.7	0.0	0.0	2.1	0.0	0.0	0.0	0.0	0.0
7:00 PM	45.2	0.6	31.5	8.4	0.1	3.8	0.0	0.0	0.8	0.0	0.0	0.0	0.0	0.0
8:00 PM	30.1	0.6	19.3	4.9	0.0	4.9	0.0	0.0	0.4	0.0	0.0	0.0	0.0	0.0
9:00 PM	21.5	0.2	14.3	3.6	0.0	3.1	0.0	0.0	0.3	0.0	0.0	0.0	0.0	0.0
10:00 PM	13.8	0.3	9.9	2.0	0.0	1.6	0.0	0.0	0.0	0.0	0.0	0.0	0.0	0.0
11:00 PM	6.8	0.4	4.3	1.3	0.0	0.8	0.0	0.0	0.0	0.0	0.0	0.0	0.0	0.0
Daily Average	884.3	9.8	530.7	188.9	6.6	114.7	1.6	0.0	31.9	0.0	0.0	0.0	0.0	0.0

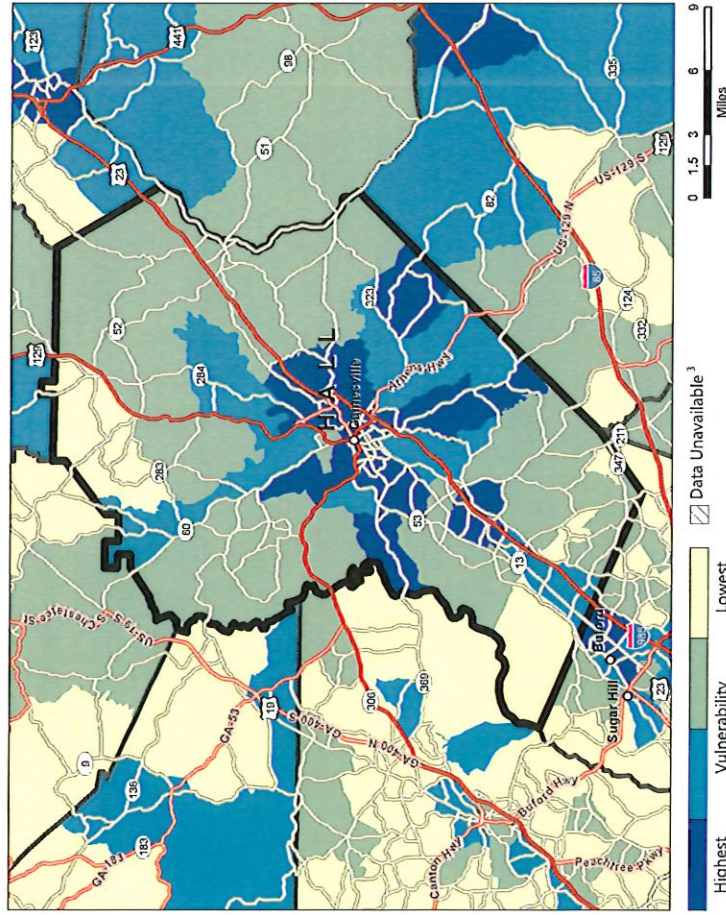
Study Grand Totals

Category	Total	Motor Bikes	Cars & Trailers	2 Axle Long	Buses	2 Axle 6 Tire	3 Axle Single	4 Axle Single	<5 Axle Double	5 Axle Double	>6 Axle Double	<6 Axle Multi	6 Axle Multi	>6 Axle Multi
Combined	13854	155	8320	2954	107	1795	24	0	499	0	0	0	0	0
Westbound	6951	82	3774	1379	59	1313	10	0	334	0	0	0	0	0
Eastbound	6903	73	4546	1575	48	482	14	0	165	0	0	0	0	0
Daily Average	884.3	9.8	530.7	188.9	6.6	114.7	1.6	0.0	31.9	0.0	0.0	0.0	0.0	0.0

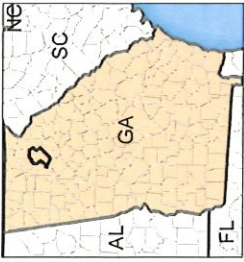
# CDC/ATSDR Social Vulnerability Index 2022

HALL COUNTY, GEORGIA

## Overall Social Vulnerability<sup>1</sup>

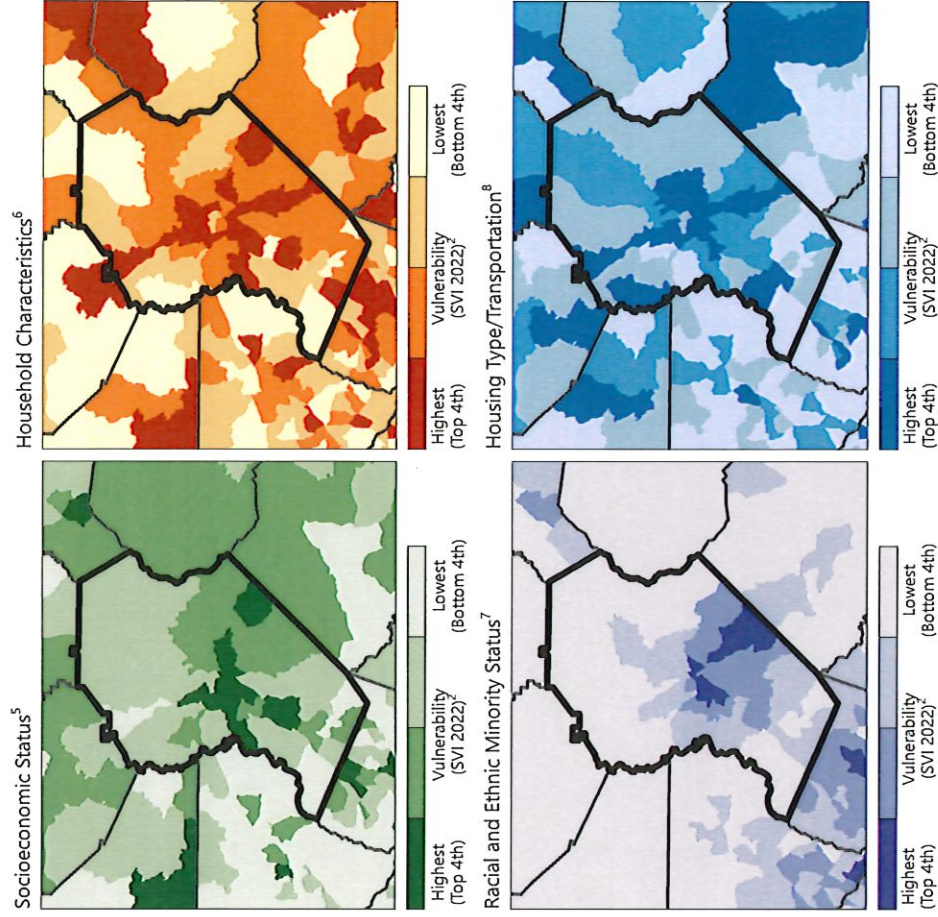


Social vulnerability refers to a community's capacity to prepare for and respond to the stress of hazardous events ranging from natural disasters, such as tornadoes or disease outbreaks, to human-caused threats, such as toxic chemical spills. The CDC/ATSDR Social Vulnerability Index (CDC/ATSDR SVI 2022)<sup>1</sup> County Map depicts the social vulnerability of communities, at census tract level, within a specified comprehensive assessment.



CDC/ATSDR SVI 2022 — HALL COUNTY, GEORGIA

## CDC/ATSDR SVI Themes



**Data Sources:** CDC/ATSDR/GRASP, U.S. Census Bureau, ArcGIS StreetMap Premium.  
**Notes:** Overall Social Vulnerability: All 16 variables. One or more variables unavailable at census tract level. The CDC/ATSDR SVI combines percentile rankings of U.S. Census American Community Survey (ACS) 2018-2022 variables, for the state, at the census tract level. Socioeconomic Status: Below 150% Poverty, Unemployed, Housing Costs Burden, No High School Diploma, No Health Insurance. Household Characteristics: Aged 65 and Older, Aged 17 and Younger, Civilian with a Disability, Single-Parent Household, English Language Proficiency. Race/Ethnicity: Hispanic or Latino (of any race), Black and African American, Not Hispanic or Latino; American Indian and Alaska Native, Not Hispanic or Latino; Asian, Not Hispanic or Latino; Native Hawaiian and Other Pacific Islander, Not Hispanic or Latino; Two or More Races, Not Hispanic or Latino; Native, Not Hispanic or Latino. Housing Type/Transportation: Multi-Unit Structures, Mobile Homes, Crowding, No Vehicle, Group Quarters.  
**References:** Flanagan, B.E., et al. A Social Vulnerability Index for Disaster Management. *Journal of Homeland Security and Emergency Management*, 2011. 8(1). CDC/ATSDR SVI web page: <https://www.atdrcdc.gov/placeandhealth/svi/index.html>.

# USLIMITS2 Speed Zoning Report

## Project Overview

**Project Name: Hall County - CR 251 Duckett Mill Road**

**Analyst:** Brent Cook

**Date:** 2025-01-06

### Basic Project Information

Route Name: CR 251 Duckett Mill Road  
From: SR 53 Dawsonville Highway  
To: 40 MPH Speed Change  
State: Georgia  
County: Hall County  
City: Rural  
Route Type: Road Section in Undeveloped Area  
Route Status: Existing

### Crash Data Information

Crash Data Years: 5.00  
Crash AADT: 1130 veh/day  
Total Number of Crashes: 8  
Total Number of Injury Crashes: 1  
Section Crash Rate: 275 per 100 MVM  
Section Injury Crash Rate: 34 per 100 MVM  
Crash Rate Average for Similar Roads: 118  
Injury Rate Average for Similar Roads: 44

### Roadway Information

Section Length: 1.41 mile(s)  
Statutory Speed Limit: 55 mph  
Existing Speed Limit: 50 mph  
Adverse Alignment: Yes  
Divided/Undivided: Undivided  
Number of Lanes: 2  
Roadside Hazard Rating: 7  
Transition Zone: No

### Traffic Information

85th Percentile Speed: 53 mph  
50th Percentile Speed: 46 mph  
AADT: 1130 veh/day

## Recommended Speed Limit:



**Note:** Sections with adverse alignments may need specific 'advisory speed warnings' which may be different from the general speed limit for the section. See [Procedures for Setting Advisory Speeds on Curves](#), Publication No. FHWA-SA-11-22, June 2011, for more guidance.

**Note:** The section crash rate of 275 per 100 MVM is above the critical rate (240). A comprehensive crash study should be undertaken to identify engineering and traffic control deficiencies and appropriate corrective actions. The speed limit should only be reduced as a last measure after all other treatments have either been tried or ruled out.

**Disclaimer:** The U.S. Government assumes no liability for the use of the information contained in this report. This report does not constitute a standard, specification, or regulation.

## Equations Used in the Crash Data Calculations

### Exposure (M)

$$M = (\text{Section AADT} * 365 * \text{Section Length} * \text{Duration of Crash Data}) / (100000000)$$
$$M = (1130 * 365 * 1.41 * 5.00) / (100000000)$$
$$M = 0.0291$$

### Crash Rate (Rc)

$$Rc = (\text{Section Crash Average} * 100000000) / (\text{Section AADT} * 365 * \text{Section Length})$$
$$Rc = (1.60 * 100000000) / (1130 * 365 * 1.41)$$
$$Rc = 275.12 \text{ crashes per 100 MVM}$$

### Injury Rate (Ri)

$$Ri = (\text{Section Injury Crash Average} * 100000000) / (\text{Section AADT} * 365 * \text{Section Length})$$
$$Ri = (0.20 * 100000000) / (1130 * 365 * 1.41)$$
$$Ri = 34.39 \text{ injuries per 100 MVM}$$

### Critical Crash Rate (Cc)

$$Cc = \text{Crash Average of Similar Sections} + 1.645 * (\text{Crash Average of Similar Sections} / \text{Exposure})^{(1/2)} + (1 /$$

(2 \* Exposure))

$$C_c = 117.88 + 1.645 * (117.88 / 0.0291)^{(1/2)} + (1 / (2 * 0.0291))$$

$C_c = 239.82$  crashes per 100 MVM

*Critical Injury Rate (Ic)*

$$I_c = \text{Injury Crash Average of Similar Sections} + 1.645 * (\text{Injury Crash Average of Similar Sections} / \text{Exposure})^{(1/2)} + (1 / (2 * \text{Exposure}))$$

$$I_c = 43.99 + 1.645 * (43.99 / 0.0291)^{(1/2)} + (1 / (2 * 0.0291))$$

$I_c = 125.17$  injuries per 100 MVM