

Clean Eagle RNG, LLC

A Joint Venture between
Archaea Energy and GFL Environmental

Archaea Energy at a glance

Largest RNG producer in the US – produced ~11 million mmbtus last year

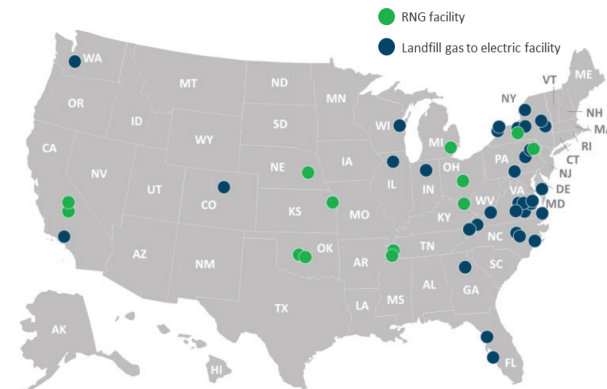
50 sites online today; development pipeline of ~80 projects with feedstock for 80% secured; targeting 15% returns

Expect to bring around ~15 plants online in both 2024 and 2025

Standardization driving construction efficiency, cost reductions and accelerated pace of delivery

bp – operational excellence and trading capabilities

Located in 32 states and growing



~ 50 operated sites across the US

[Video: The RNG Process](https://www.bp.com/en_us/united-states/home/news/features-and-highlights/how-bp-turns-landfill-waste-into-renewable-natural-gas.html)

https://www.bp.com/en_us/united-states/home/news/features-and-highlights/how-bp-turns-landfill-waste-into-renewable-natural-gas.html

Biogas process

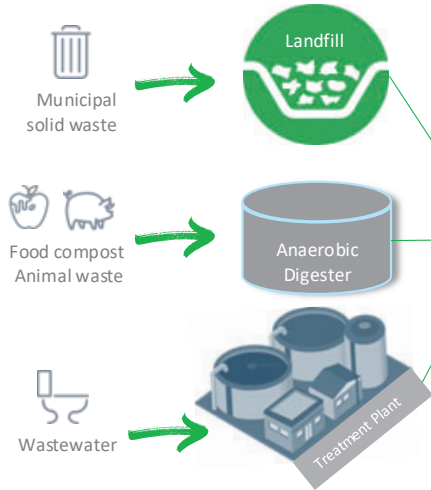
Feedstock & Digestion Process

Biogas Production

Biogas Distribution

Biogas Demand

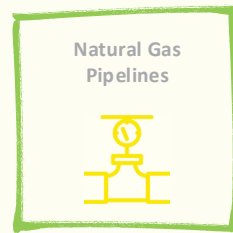
Transport Fuel Credits



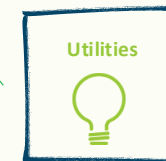
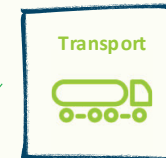
RNG is produced from various organic waste feedstocks.



Biogas is processed and purified to become pipeline quality biomethane. Clean Eagle will compress to CNG and truck to local pipelines.

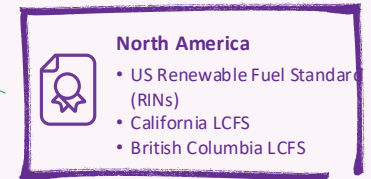


Biogas is injected into & moved on natural gas pipelines.



Biogas is compressed (bio-CNG) or liquefied (bio-LNG) and sold at fueling stations.

It can also be sold to voluntary buyers or utilities for use in heating, power generation, etc.



Environmental credits may incentivize voluntary participation

Clean Eagle RNG, LLC Environmental and Social Impact

LFG-to-RNG facilities produce considerable social and economic benefits while avoiding adverse environmental effects



Repurpose waste emissions into reliable fuel

LFG-to-RNG production facilities capture naturally occurring waste emissions and repurpose them into valuable, low carbon fuel that displaces the use of non-renewable resources to produce the same amount of energy.



Health & safety benefits

When LFG is converted into RNG, various non-methane organic compounds are removed during gas treatment and upgrading processes.



Regional & nationwide economic benefits

RNG facilities support neighboring industries (construction, engineering, equipment vendors, utilities) while typically employing local talent to run day-to-day operations.

Clean Eagle RNG, LLC Project Overview

Project Overview

This project is expected to deliver significant community benefits with minimal off-site impacts

- Safety is at the core of everything we do. The facilities are designed to industry standards and codes to be as safe as possible in its operation. We have extensive plans in place to comply with all local, state, and federal laws for the safety of the environment and the community during both the construction and operation of the facilities.
- Clean Eagle RNG, LLC ("Clean Eagle") will build a renewable natural gas facility on-site at the Eagle Point Landfill in Forsyth County (the "RNG Facility"). The landfill will collect landfill gas through a series of gas wells and pipes and, instead of only flaring it, will transport it to our RNG Facility.
- Due to the lack of local pipelines, Certarus will build a compressed natural gas (CNG) plant on the Eagle Point Landfill to compress the RNG and truck it to the Project Site to inject into the Liberty interconnect located in Hall County. Clean Eagle will manage truck traffic for CNG transportation to minimize any negative impacts. CNG trucking is already utilized as fuel for landfill trucks and the trucking of CNG is very similar to propane delivery to homes and businesses.
- Clean Eagle will also contract with Certarus to build and operate a CNG decant and interconnect facility in Hall County (the "Injection Facility"). Trucks will deliver CNG from the Eagle Point Landfill to Injection Facility and inject gas into the Liberty pipeline system.
- Clean Eagle will design, construct, and operate the RNG Facility. Certarus will design, construct, and operate the Injection Facility.
- Once the landfill gas reaches our RNG Facility, it is processed to remove any impurities and transform it into renewable natural gas ("RNG"). The RNG will then be trucked to the local Liberty interconnect to our customers, utility companies and corporations.
- The RNG Facility is expected to have the same annual environmental benefits as the carbon sequestered by approximately 1,170,547 acres of forests in the U.S. The project is expected to provide enough renewable natural gas in one year to heat 26,053 homes¹. Numbers are from the EPA's Landfill Gas to Energy Benefits calculator.

Visual Example of RNG Site

- The below facility is an example of the RNG Facility that will be located at the Eagle Point Landfill in Forsyth County.



FILED IN OFFICE
PROBATE COURT
HALL COUNTY, GEORGIA
PROBATE COURT
STANDARD FORM
SEP 15 AM 7:13

STATE OF GEORGIA

COUNTY OF HALL

ESTATE NO. E-11-355

LETTERS TESTAMENTARY
(Relieved of Filing Returns)

By Patti P. Cornett, Judge of the Probate Court of said County.

KNOW ALL WHOM IT MAY CONCERN:

That on the 14th day of September, 2011, at a regular term of the Probate Court, the Last Will and Testament dated December 20, 1990, of Mary Joyce Adams Roberts deceased, at the time of his or her death a resident of said County, was legally proven in solemn form and was admitted to record by order, and it was further ordered that Faye Roberts Peck Pass named as Executor(s) in said Will, be allowed to qualify, and that upon so doing, Letters Testamentary be issued to such Executor(s).

NOW, THEREFORE, the said Faye Roberts Peck Pass, having taken the oath of office and complied with all the necessary prerequisites of the law, is/are legally authorized to discharge all the duties and exercise all the powers of Executor(s) under the Will of said deceased, according to the Will and the law.

Given under my hand and official seal, the 14th day of September, 2011.

Patti P. Cornett
Probate Judge

NOTE: The following must be signed if the judge does not sign the original of this document:

Issued by:

(Seal)

PROBATE CLERK/DEPUTY CLERK

FURTHER CERTIFY THAT THESE LETTERS
ARE STILL IN FULL FORCE AND EFFECT, THIS
29-DAY OF May, 2019
Janice Carter
Judge, Clerk Hall County Probate Court

STATE OF GEORGIA
COUNTY OF HALL

I, Judge of the Probate Court in and for said County do hereby certify that the within is a true and correct copy of the original as it appears on file in this office. Witness the official seal and signature of Probate Court this 29 day of May, 2019.
Janice Carter
Judge, Clerk Hall County Probate Court

Visual Example of Injection Facility

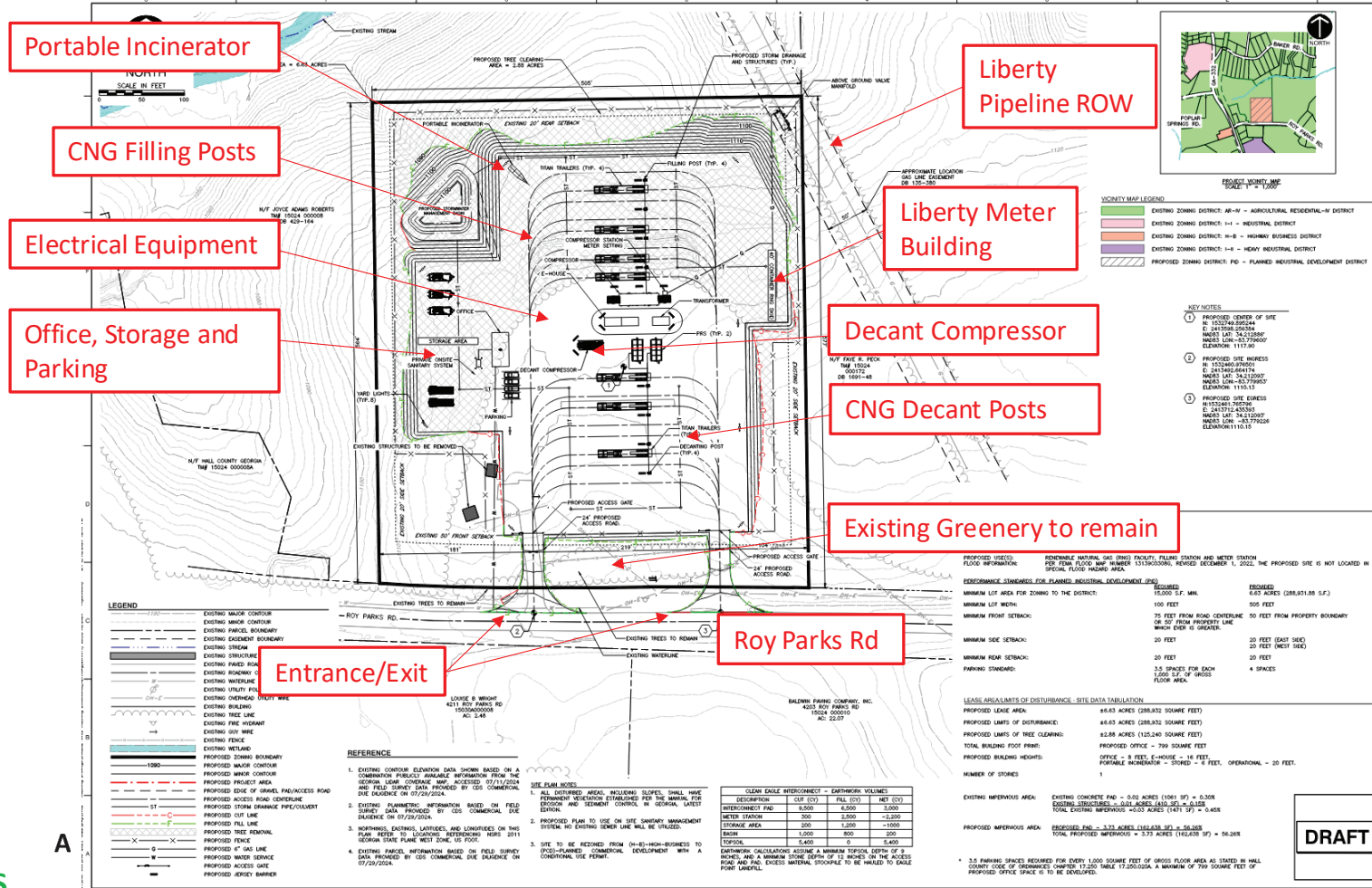
- The below facility is an example of the Injection Facility that will be located at the Project Site in Hall County.



Proposed Hall County Project Site

4212 Roy Parks Rd, Gainesville, GA 30507

**SATURN
RENEWABLES**



SUBMITTAL RECORD

210 W. Old Wilson Bridge Road
Suite 250
Worthington, OH 43085
Ph. 614.540.6633
www.cccinc.com

CCC
Civil & Environmental
Consultants, Inc.

**CLEAN EAGLE INTERCONNECT
PROCESSING RING FACILITY
ARCAHEA ENERGY OPERATING, LLC
GAINESVILLE, GA**

PROPOSED SITE DEVELOPMENT PLAN

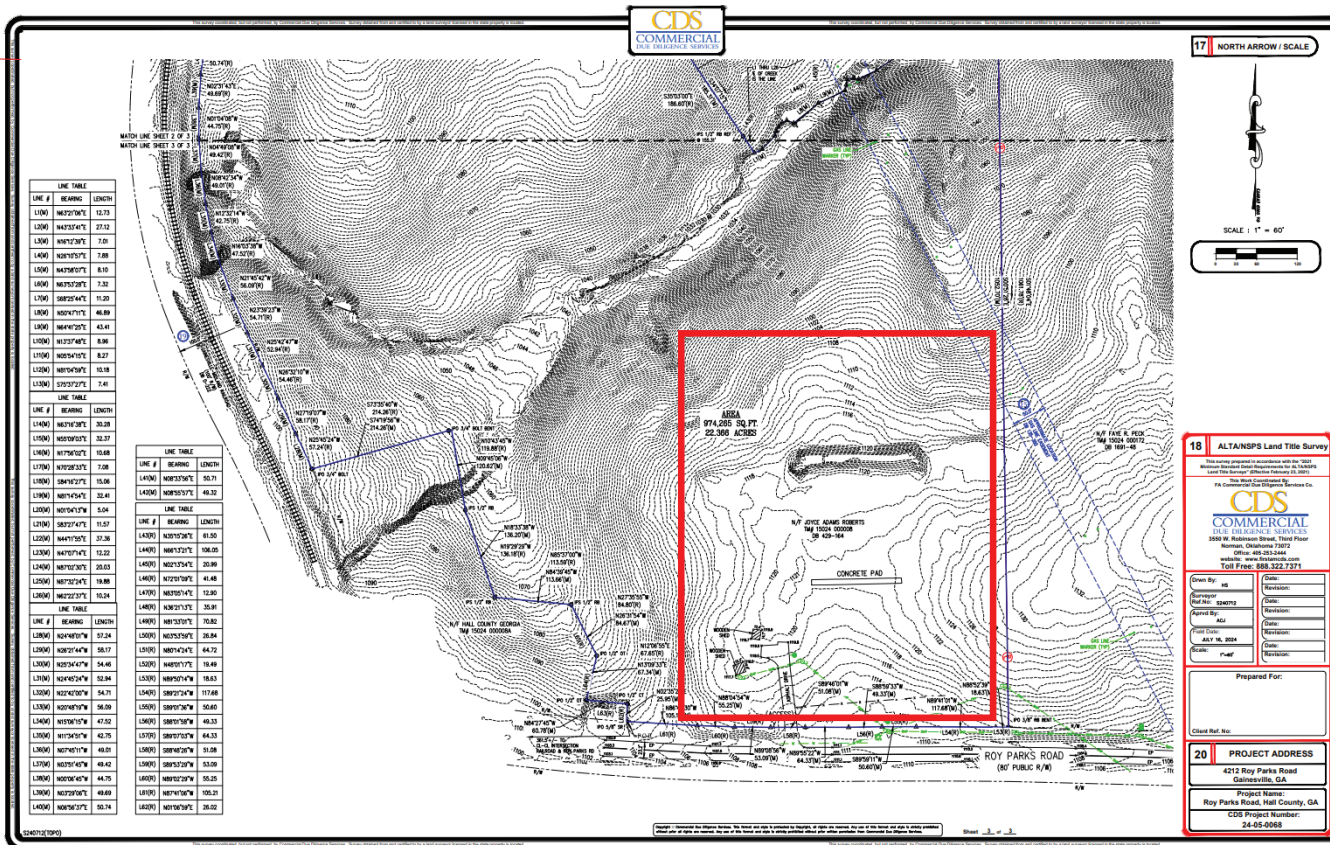
DATE: 08/28/2024
DRAWN BY: J. H. HARRIS
CHECKED BY: J. H. HARRIS
APPROVED BY: J. H. HARRIS

RZ-1

Proposed Hall Co Project Site

4212 Roy Parks Rd, Gainesville, GA 30507

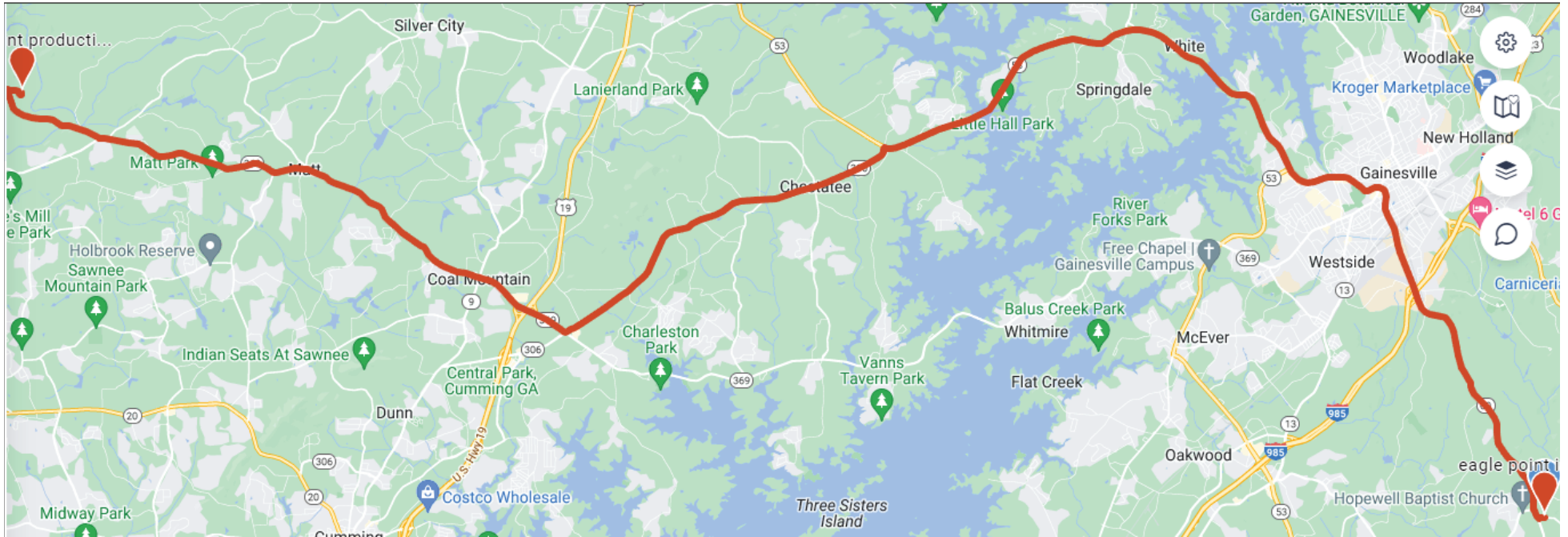
- Clean Eagle intends to purchase the full 22-acre property. However, the development will be confined to the 6.63 acres depicted below, preserving the remaining 15.7 acres as forested and unimproved land with all setbacks consistent with the zoning requirement.



**SATURN
RENEWABLES**

Trucking Route Map

- Below is the proposed route between the RNG Facility and Injection Facility, subject to DOT and other applicable approvals.





CERTARUS
Low Carbon Energy Solutions

RNG Virtual Pipeline
Transportation Safety
October 2024

Safety



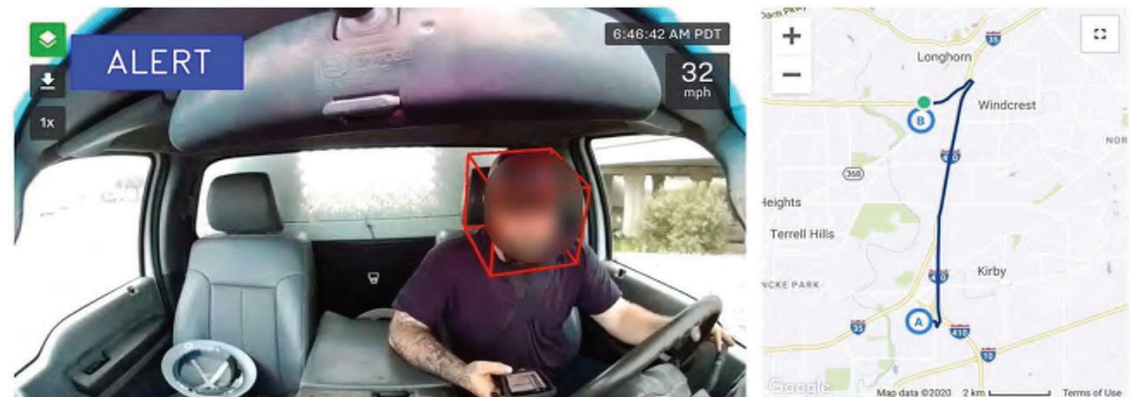
Certarus maintains an industry leading safety record

Through training, technology and regular communication, we foster a strong safety culture that empowers our people and protects our customers and communities.



Enhancing Fleet Safety

- In-vehicle monitoring (IVM) identifies behavioral trends and opportunities for coachable moments
- Collision avoidance technology provides real-time in cab alerts for potential hazards, including lane departure
- Driver performance grading system incentivizes good driving habits
- Real-time asset tracking enhances logistics, driver safety and fleet security.



Leveraging Technology to Enhance Safety

In-Vehicle
Monitoring
of Driver

Dispatch
Center
Staffed 24/7

Fire Protection
System

Emergency
Shut Down

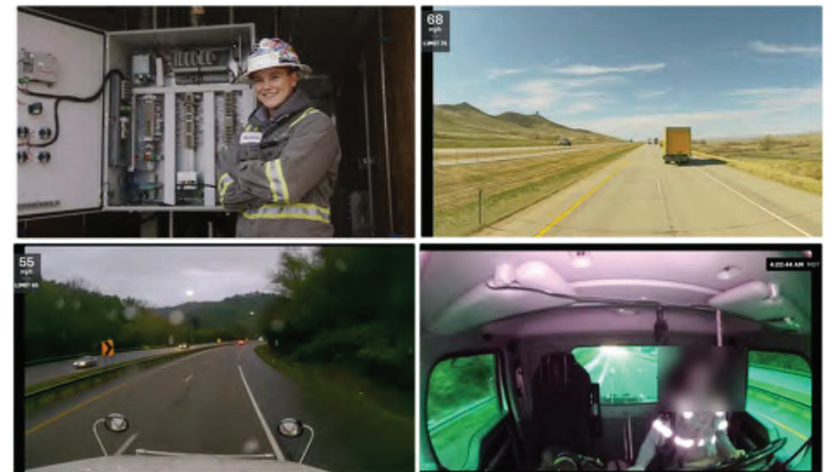
Brake
Interlock
(Trailer Doors)

Passive
over-pressure
protection

Grounding
and Bonding
Equipment

Roll Stability
Support via
ABS

Smart Trailer
Technology



Investment Into Asset Safety



Inspections and Certifications

- DOT required inspection on brakes and chassis every 90 days
- Trailer cylinder and peak pressure device DOT recertification every 5 years
- Certarus ONLY
 - Trailer CNG component inspection every 90 – 120 days
 - Proprietary operations deck installed on all Titan trailers
 - Partnerships with Hexagon Agility and Quantum for continuous improvement around safety and reliability
 - All trailers equipped with Samsara, deflection plates, and electronic stability controls (ESC) on the chassis

Emergency Response Assistance Plan (ERAP)

Vehicle Incident - Precautions for Natural Gas

- Notify Certarus as soon as it is safe to do so.
 - Certarus 24-Hour Emergency Number: 1-877-500-7761
- Asset integrity - Certarus employee or designated person will inspect the trailer prior to moving.
- If trailer is damaged, contents will be offloaded to another trailer prior to removal.
- If fire or gas leak is present, secure the area.
 - Evacuate a large area around the CNG container:
 - One-mile (1.6km) radius for fires
 - Warning: Do not extinguish natural gas flames with a water or chemical fire extinguisher
 - To control fire, allow gas to burn until flame is completely exhausted (gas runs out)

Additional Safety Precautions

- Certarus Emergency Response & Equipment Training
- Emergency First Responder Outreach

GUIDE 115 GASES - FLAMMABLE (INCLUDING REFRIGERATED LIQUIDS)

POTENTIAL HAZARDS

FIRE OR EXPLOSION

- **EXTREMELY FLAMMABLE.**
- Will be easily ignited by heat, sparks or flames.
- Will form explosive mixtures with air.
- Vapors from liquefied gas are initially heavier than air and spread along ground.
- **CAUTION:** Hydrogen (UN1948), Deuterium (UN1957), Hydrogen, refrigerated liquid (UN1966), Methane (UN1971) and Hydrogen and Methane mixture, compressed (UN2024) are lighter than air and will rise. Hydrogen and Deuterium fires are difficult to detect since they burn with an invisible flame. Use an alternate method of detection (thermal camera, broom handle, etc.)
- Vapors may travel to source of ignition and flash back.
- Cylinders exposed to fire may vent and release flammable gas through pressure relief devices.
- Containers may explode when heated.
- Ruptured cylinders may rocket.
- **CAUTION:** When LNG - Liquefied natural gas (UN1972) is released on or near water, product may vaporize explosively.

HEALTH

- Vapors may cause dizziness or asphyxiation without warning, especially when in closed or confined areas.
- Some may be irritating if inhaled at high concentrations.
- Contact with gas, liquefied gas or cryogenic liquids may cause burns, severe injury and/or frostbite.
- Fire may produce irritating and/or toxic gases.

PUBLIC SAFETY

- **CALL 911. Then call emergency response telephone number on shipping paper.** If shipping paper not available or no answer, refer to appropriate telephone number listed on the inside back cover.
- Keep unauthorized personnel away.
- Stay upwind, uphill and/or upstream.
- Many gases are heavier than air and will spread along the ground and collect in low or confined areas (sewers, basements, tanks, etc.).

PROTECTIVE CLOTHING

- Wear positive pressure self-contained breathing apparatus (SCBA).
- Structural firefighters' protective clothing provides thermal protection but only limited chemical protection.
- Always wear thermal protective clothing when handling refrigerated/cryogenic liquids.

EVACUATION

Immediate precautionary measure

- Isolate spill or leak area for at least 100 meters (330 feet) in all directions.

Large Spill

- Consider initial downwind evacuation for at least 800 meters (1/2 mile).

Fire

- If tank, rail tank car or highway tank is involved in a fire, ISOLATE for 1600 meters (1 mile) in all directions; also, consider initial evacuation for 1600 meters (1 mile) in all directions.
- In fires involving Liquefied Petroleum Gases (LPG) (UN1075), Butane (UN1011), Butylene (UN1012), Isobutylene (UN1050), Propylene (UN1057), Isobutane (UN1969), and Propane (UN1978), also refer to the "BLEVE - Safety Precautions" section.

GUIDE 115 GASES - FLAMMABLE (INCLUDING REFRIGERATED LIQUIDS)

EMERGENCY RESPONSE

FIRE

- **DO NOT EXTINGUISH A LEAKING GAS FIRE UNLESS LEAK CAN BE STOPPED.**
- **CAUTION:** Hydrogen (UN1948), Deuterium (UN1957), Hydrogen, refrigerated liquid (UN1966) and Hydrogen and Methane mixture, compressed (UN2024) will burn with an invisible flame. Use an alternate method of detection (thermal camera, broom handle, etc.)

Small Fire

- Dry chemical or CO₂.

Large Fire

- Water spray or fog.
- If it can be done safely, move undamaged containers away from the area around the fire.
- **CAUTION:** For LNG - Liquefied natural gas (UN1972) pool fires, DO NOT USE water. Use dry chemical or high-expansion foam.

Fire Involving Tanks

- Fight fire from maximum distance or use unmanned master stream devices or monitor nozzles.
- Cool containers with flooding quantities of water until well after fire is out.
- Do not direct water at source of leak or safety devices; icing may occur.
- Withdraw immediately in case of rising sound from venting safety devices or discoloration of tank.
- **ALWAYS** stay away from tanks in direct contact with flames.
- For massive fire, use unmanned master stream devices or monitor nozzles; if this is impossible, withdraw from area and let fire burn.

SPILL OR LEAK

- **ELIMINATE** all ignition sources (no smoking, flares, sparks or flames) from immediate area.
- All equipment used when handling the product must be grounded.
- Do not touch or walk through spilled material.
- If possible, turn leaking containers so that gas escapes rather than liquid.
- Use water spray to reduce vapors or divert vapor cloud drift. Avoid allowing water runoff to contact spilled material.
- Do not direct water at spill or source of leak.
- **CAUTION:** For LNG - Liquefied natural gas (UN1972), DO NOT apply water, regular or alcohol-resistant foam directly on spill. Use a high-expansion foam if available to reduce vapors.
- Prevent spreading of vapors through sewers, ventilation systems and confined areas.
- Isolate area until gas has dispersed.
- **CAUTION:** When in contact with refrigerated/cryogenic liquids, many materials become brittle and are likely to break without warning.

FIRST AID

Refer to the "General First Aid" section.

Specific First Aid:

- Clothing frozen to the skin should be thawed before being removed.
- In case of contact with liquefied gas, only medical personnel should attempt thawing frozen parts.
- In case of burns, immediately cool affected skin for as long as possible with cold water. Do not remove clothing if adhering to skin.

In Canada, an Emergency Response Assistance Plan (ERAP) may be required for this product. Please consult the shipping paper and/or the "ERAP" section.

Page 160 ERG 2024 Page 161 ERG 2024

