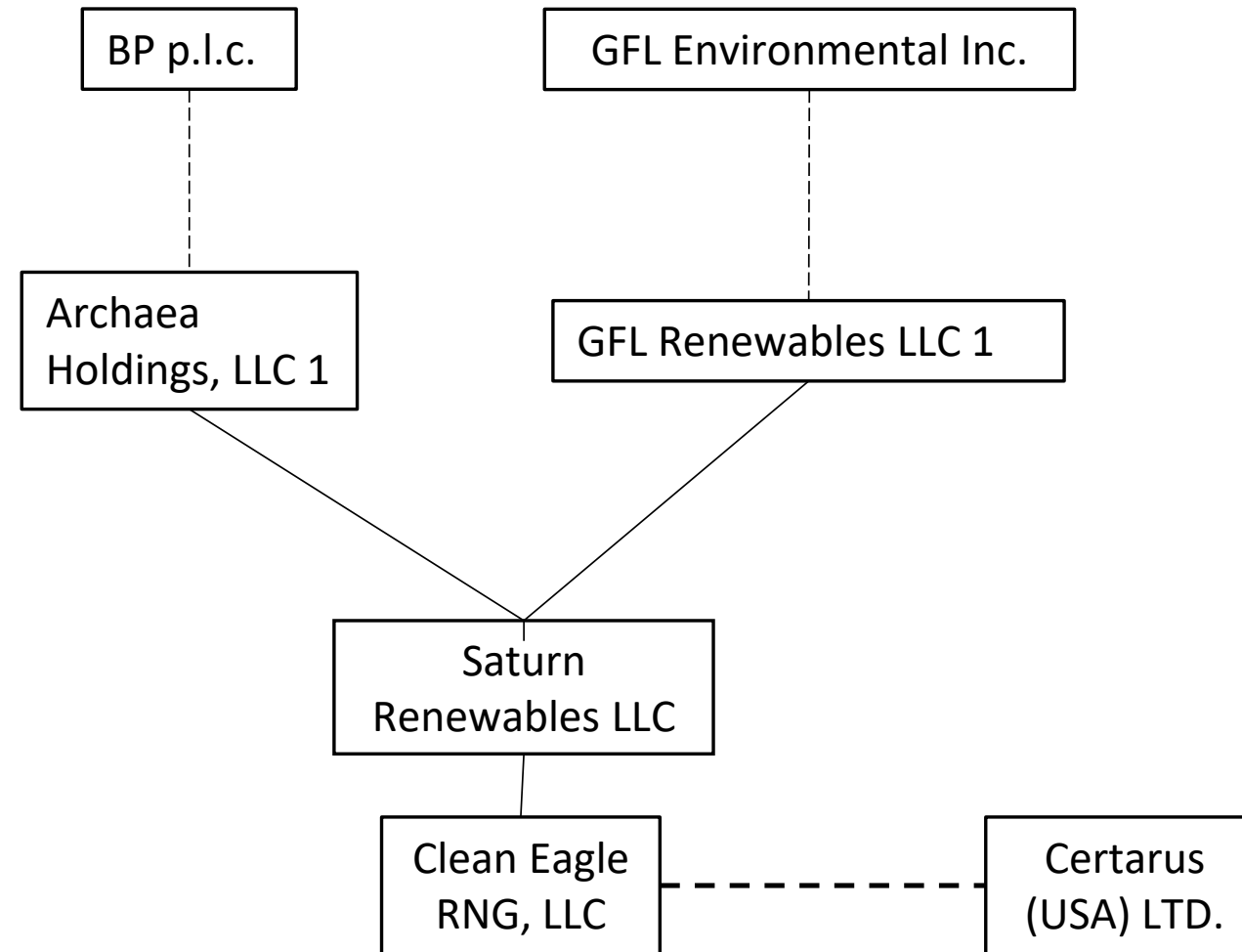


Clean Eagle RNG, LLC

A Joint Venture between
Archaea Energy and GFL Environmental

Introductions

Saturn, Archaea, GFL, Certarus



1. Archaea Holdings, LLC is an indirect wholly-owned subsidiary of bp, p.l.c. (NYSE: bp) and GFL Renewables LLC is an indirect wholly-owned subsidiary of GFL Environmental, Inc. (NYSE: GFL).
2. Clean Eagle RNG, LLC is registered to do business in Georgia and will own the property and operating equipment on the Subject Property.
3. Clean Eagle RNG, LLC is contracting with Certarus (USA) Ltd., who will be responsible for (1) the construction, operation, and maintenance of the facilities on the Subject Property in Hall County, and (2) the loading, unloading, and transportation of the RNG from Forsyth County to the Subject Property in Hall County. Certarus is also registered to do business in Georgia.

Archaea Energy at a glance

Largest RNG producer in the US – produced ~11 million mmbtus last year

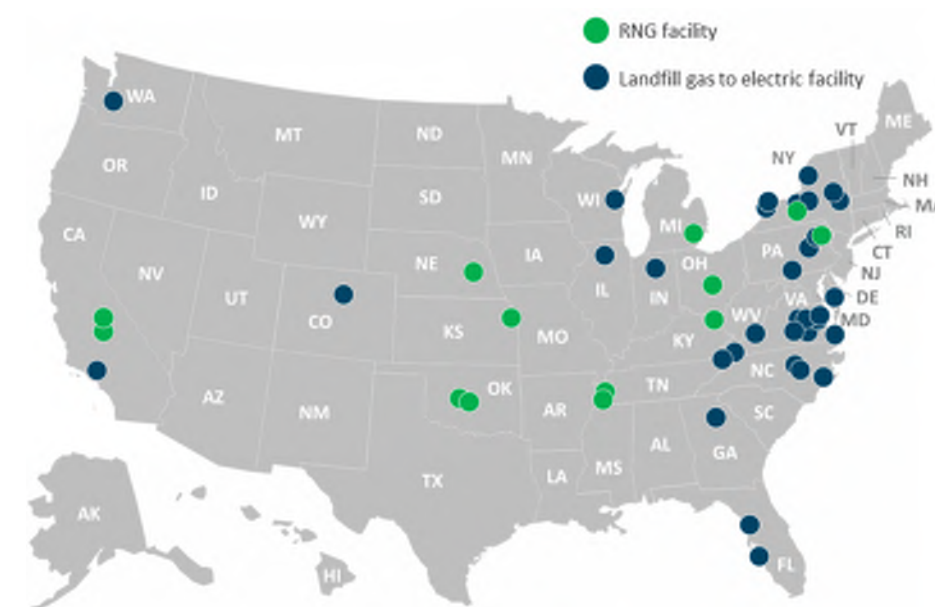
50 sites online today; development pipeline of ~80 projects with feedstock for 80% secured; targeting 15% returns

Expect to bring around ~15 plants online in both 2024 and 2025

Standardization driving construction efficiency, cost reductions and accelerated pace of delivery

bp – operational excellence and trading capabilities

Located in 32 states and growing



~ 50 operated sites across the US

Video: The RNG Process

https://www.bp.com/en_us/united-states/home/news/features-and-highlights/how-bp-turns-landfill-waste-into-renewable-natural-gas.html

Biogas process

Feedstock & Digestion Process

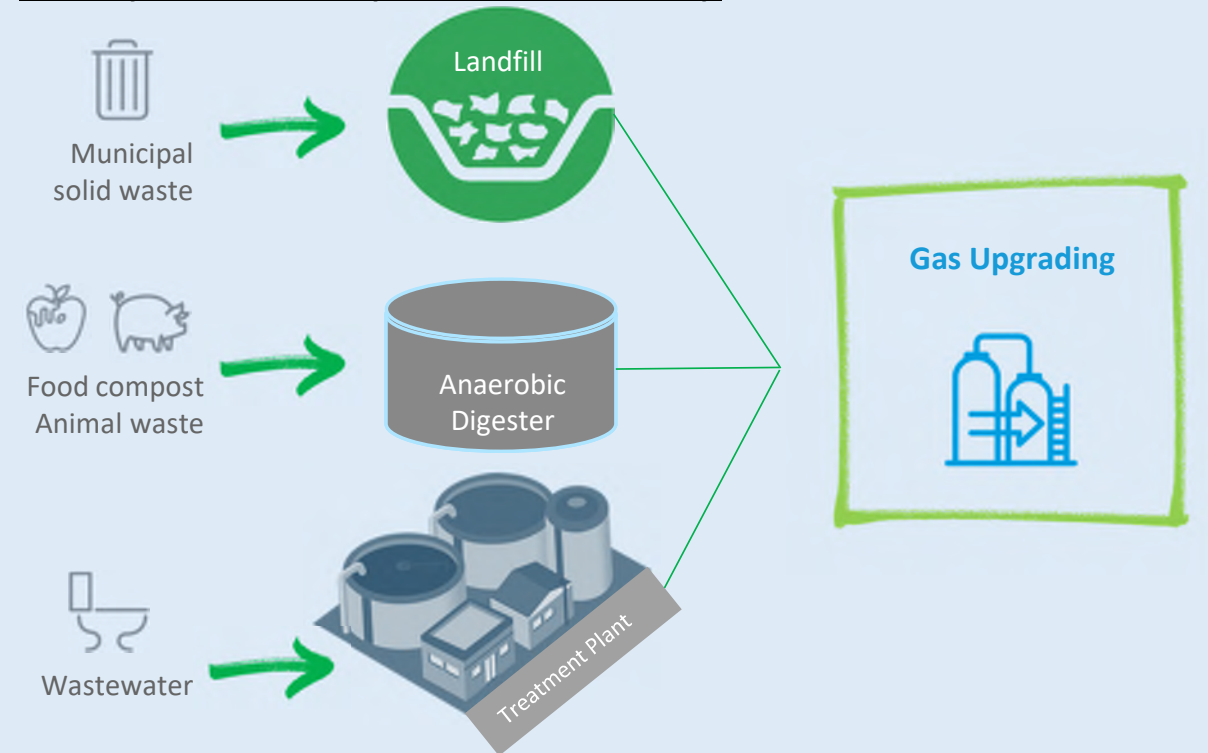
Biogas Production

Biogas Distribution

Biogas Demand

Transport Fuel Credits

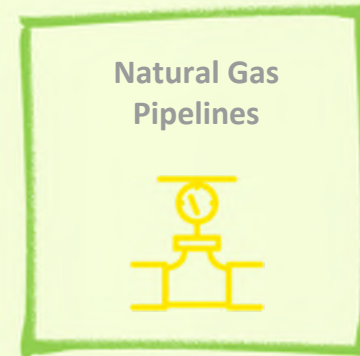
Forsyth County: RNG Facility



RNG is produced from various organic waste feedstocks.

Biogas is processed and purified to become pipeline quality biomethane. Clean Eagle will compress to CNG and truck to local pipelines.

Hall County: Decant and Interconnect Facility



Biogas is injected into & moved on natural gas pipelines.



Biogas is compressed (bio-CNG) or liquefied (bio-LNG) and sold at fueling stations.

It can also be sold to voluntary buyers or utilities for use in heating, power generation, etc.



Environmental credits may incentivize voluntary participation

Clean Eagle RNG, LLC Environmental and Social Impact

LFG-to-RNG facilities produce considerable social and economic benefits while avoiding adverse environmental effects



Repurpose waste emissions into reliable fuel

LFG-to-RNG production facilities capture naturally occurring waste emissions and repurpose them into valuable, low carbon fuel that displaces the use of non-renewable resources to produce the same amount of energy.



Health & safety benefits

When LFG is converted into RNG, various non-methane organic compounds are removed during gas treatment and upgrading processes.



Regional & nationwide economic benefits

RNG facilities support neighboring industries (construction, engineering, equipment vendors, utilities) while typically employing local talent to run day-to-day operations.

Clean Eagle RNG, LLC Project Overview

Visual Example of Injection Facility

- The below facility is an example of the Injection Facility that will be located at the Project Site in Hall County.



Project Overview

This project is expected to deliver significant community benefits with minimal off-site impacts

- **Safety is at the core of everything we do. The facilities are designed to industry standards and codes to be as safe as possible in its operation. We have extensive plans in place to comply with all local, state, and federal laws for the safety of the environment and the community during both the construction and operation of the facilities.**
- **Clean Eagle RNG, LLC ("Clean Eagle") will build a renewable natural gas facility on-site at the Eagle Point Landfill in Forsyth County (the "RNG Facility"). The landfill will collect landfill gas through a series of gas wells and pipes and, instead of only flaring it, will transport it to our RNG Facility.**
- **Due to the lack of local pipelines, Certarus will build a compressed natural gas (CNG) plant on the Eagle Point Landfill to compress the RNG and truck it to the Project Site to inject into the Liberty interconnect located in Hall County. Clean Eagle will manage truck traffic for CNG transportation to minimize any negative impacts. CNG trucking is already utilized as fuel for landfill trucks and the trucking of CNG is very similar to propane delivery to homes and businesses.**
- **Clean Eagle will also contract with Certarus to build and operate a CNG decant and interconnect facility in Hall County (the "Injection Facility"). Trucks will deliver CNG from the Eagle Point Landfill to Injection Facility and inject gas into the Liberty pipeline system.**
- **Clean Eagle will design, construct, and operate the RNG Facility. Certarus will design, construct, and operate the Injection Facility.**
- **Once the landfill gas reaches our RNG Facility, it is processed to remove any impurities and transform it into renewable natural gas ("RNG"). The RNG will then be trucked to the local Liberty interconnect to our customers, utility companies and corporations.**
- **The RNG Facility is expected to have the same annual environmental benefits as the carbon sequestered by approximately 1,170,547 acres of forests in the U.S. The project is expected to provide enough renewable natural gas in one year to heat 26,053 homes¹. Numbers are from the EPA's Landfill Gas to Energy Benefits calculator.**

Why This Site

4212 Roy Parks Rd, Gainesville, GA 30507

- **Why Hall Co**
 - Local pipeline systems near the RNG Facility did not have capacity for this volume of gas.
 - Liberty system is fed from tap in Athens and the end of the system is in Gainesville.
 - Liberty system is not sized for peak winter demand or future growth.
 - Liberty had to curtail industrial customers last week to ensure enough heating gas for homes was available.
 - Thermal heavy business is capped for future expansion.
 - Clean Eagle gas brings 1.4 BCF/yr of natural gas to the system near the end of the line with the largest amount of curtailed customers.
 - Clean Eagle will help to balance and add resilience to the Liberty Transmission system during peak winter days and further enable business growth for Gainesville.
 - During an emergency situation the ability to utilize the Certarus virtual pipeline would allow unreachable customers access to gas.
- **Why this location on Liberty**
 - 3rd party system hydraulic study completed
 - First 2 locations on northern end of the system were on the Liberty Distribution system which did not have enough customers to consume the gas which would backpressure the Liberty System during the peak summer load.
 - Only place to inject is on the transmission system.
 - Consideration of locating site
 - Outside of heavily populated areas.
 - Adjacent to Liberty Gainesville Transmission line.
 - Minimize environmental impact.
 - Closest to the industrial user needs.
 - Minimizing trucking time on road for safety and economics.

Proposed Hall County Project Site

4212 Roy Parks Rd, Gainesville, GA 30507

Portable Incinerator

CNG Filling Posts

Electrical Equipment

Office, Storage and Parking

Liberty Pipeline ROW

Liberty Meter Building

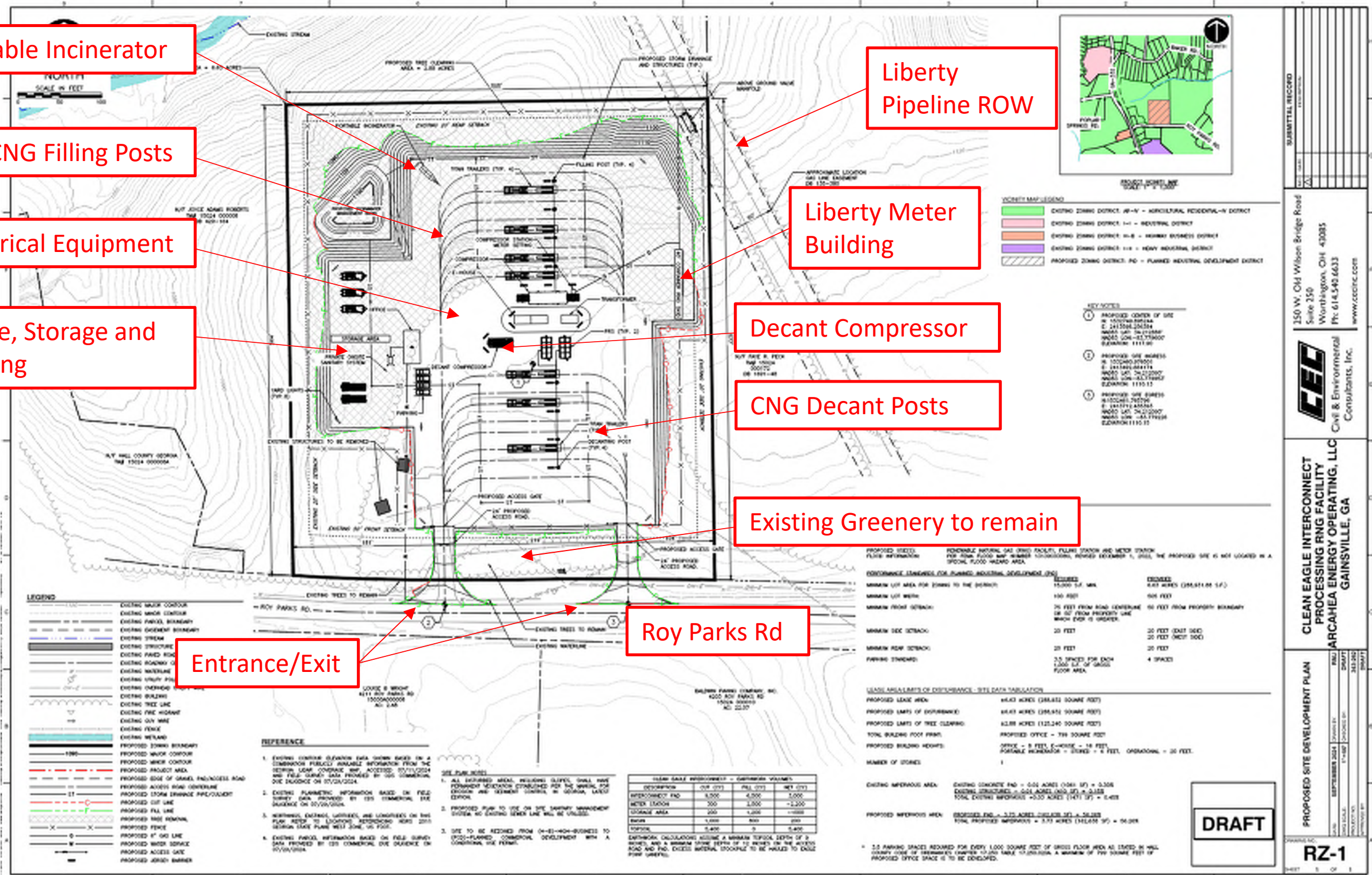
Decant Compressor

CNG Decant Posts

Existing Greenery to remain

Entrance/Exit

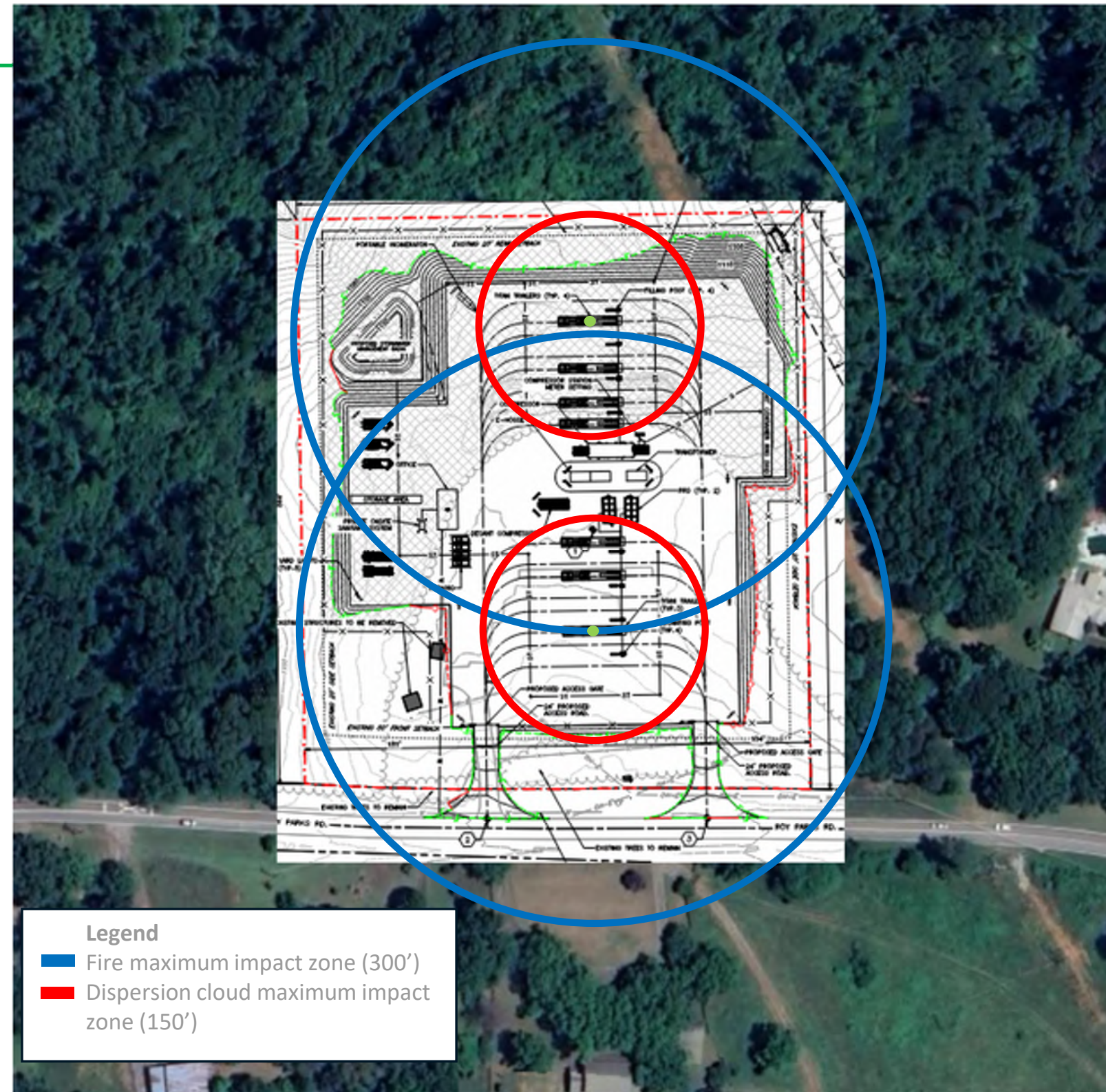
Roy Parks Rd



Site Safety Review

4212 Roy Parks Rd, Gainesville, GA 30507

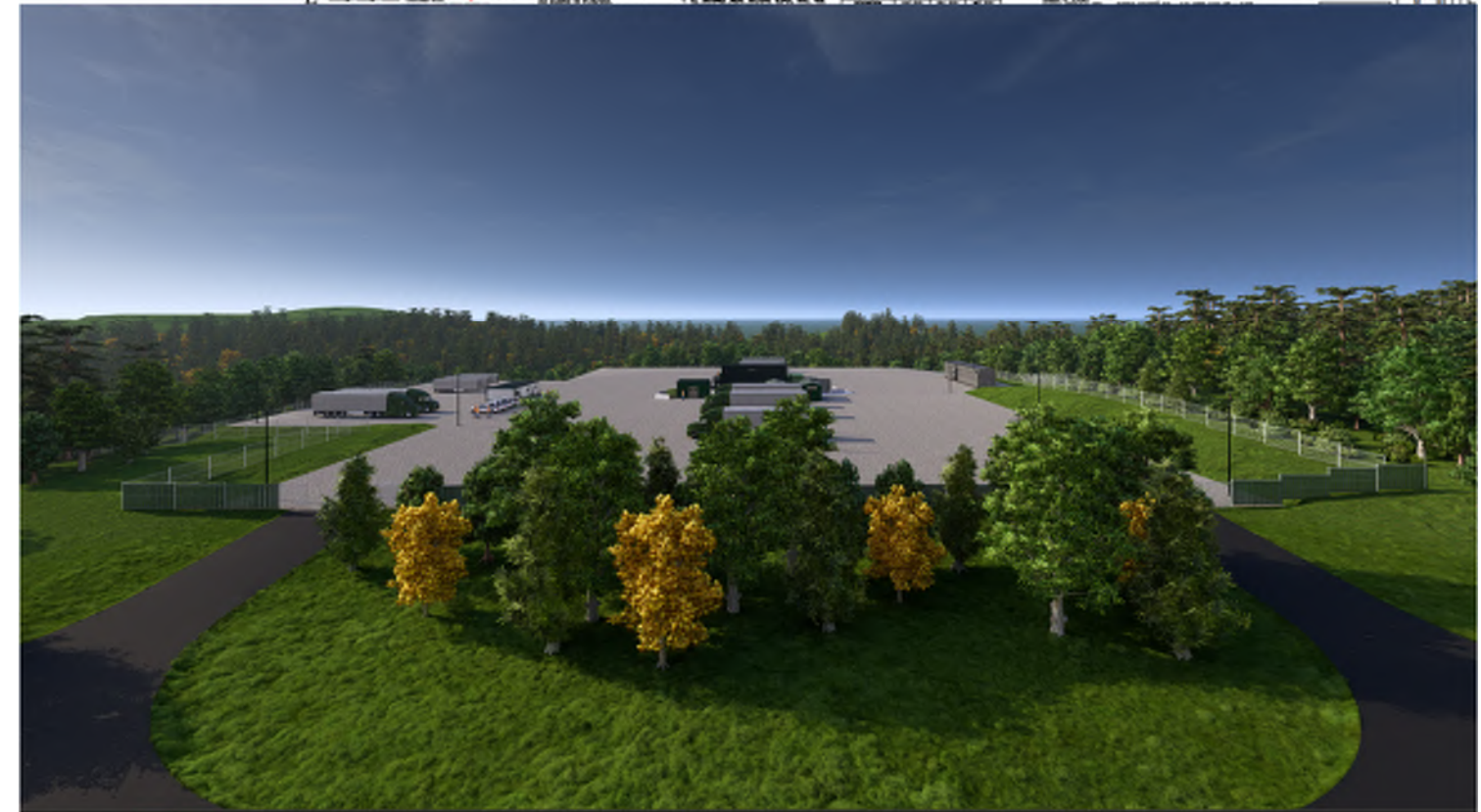
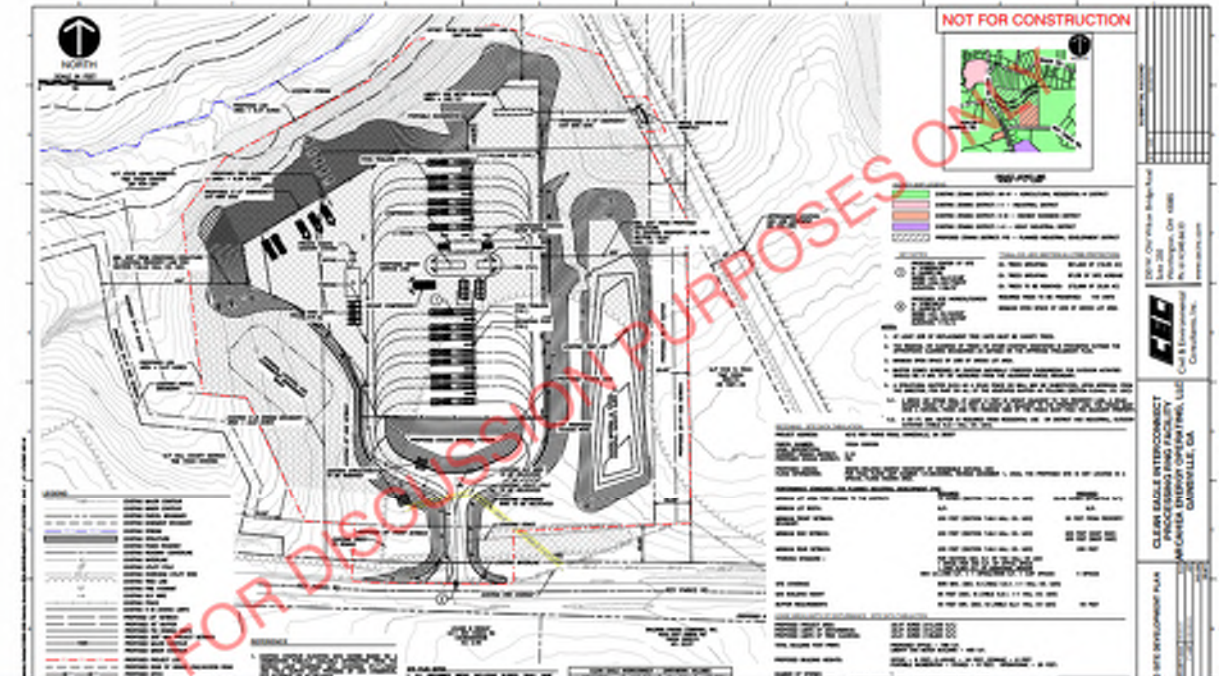
- Consequence Modeling Study
 - Conducted for every site during detailed engineering.
 - Preliminary worst case fire and vent off scenarios modeled.
 - Utilizing API recommended practice for process safety.
 - School is 1300' away and max modeled radius of exposure is 300'.
 - No homes are within the impact zones.
- Natural Gas (methane) is lighter than air and the trucks and facility is designed to vent gas to atmosphere to quickly dissipate and dilute the methane.
- Certarus has an emergency response plan that will be coordinated with local fire department. (Example shown in slides below)



Hall Co UDC Designation

4212 Roy Parks Rd, Gainesville, GA 30507

- **Planned Industrial Development vs Waste Related Energy Recovery Facility**
 - Natural gas is already pipeline quality gas with no processing occurring onsite.
 - Believe Planned Industrial Development is more in line with County's Comprehensive Plan.
 - Facility is already hidden from sight.
- **Impacts of Waste Related Energy Recover Facility**
 - An additional 2.84 acres that will be included in the development (6.63 acres versus 9.47 acres)
 - At least an additional 3.19 acres of tree clearing (3.07 acres versus 4.32-6.26 acres)
 - Instead of 55' buffer from LOD to Stream the LOD will be encroaching on the stream buffer. Limits of grading from stream to buffer will drop from 136' to 29'.
 - One CNG fill station had to be removed to accommodate the new UDC setback requirements as well as avoid impact to the stream. This results in less trucks available to support loading operations to service affected customers and businesses in the event of local outage





CERTARUS
Low Carbon Energy Solutions

RNG Virtual Pipeline
Transportation Safety
October 2024

Safety



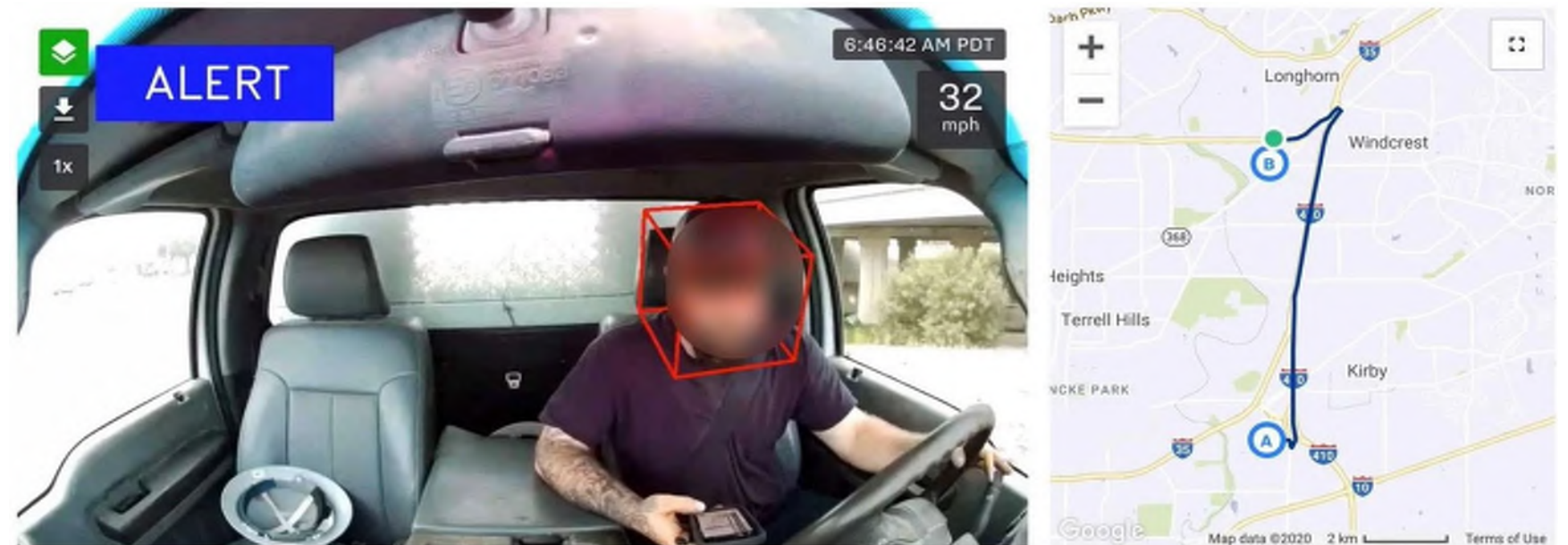
Certarus maintains an industry leading safety record

Through training, technology and regular communication, we foster a strong safety culture that empowers our people and protects our customers and communities.



Enhancing Fleet Safety

- In-vehicle monitoring (IVM) identifies behavioral trends and opportunities for coachable moments
- Collision avoidance technology provides real-time in cab alerts for potential hazards, including lane departure
- Driver performance grading system incentivizes good driving habits
- Real-time asset tracking enhances logistics, driver safety and fleet security.



Driver Qualifications

- Valid CDL holders with endorsement “H” or endorsement “X” (Hazmat + Tank) and a clean driving record
- Driver compliance with all USDOT qualification and screening requirements
- Certarus requires a minimum of 2 years Hazmat driving experience
 - Local area drivers who meet qualifications are encouraged to apply.

Training Drivers Receive

- Certarus HSE Orientation and CNG/RNG Trailer Safety
- Smith System Defensive Driver training
- Certarus rollover prevention and advanced skills maneuver training



Certarus Industry Leading Training

- Certarus is proud to offer industry-leading training and onboarding requirements
- We combine classroom, hands on, and simulator training to get our drivers prepared for a variety of weather conditions and road hazards
 - Certarus owned and operated simulator can be configured to replicate various practical conditions such as dropped wheel, steer tire blowout or changes to center of gravity . Our trainers then test drivers' readiness with harsh winds, ice, and obstructions.

CERTARUS UNIVERSITY		Value	Est Time (Days)	Certification	Source	Delivery Method										
Module	Code					Classroom	Hands On	Simulator	Self Paced	Blended	Virtual Reality	Mobile App	Webinar	Video	Podcast	Other
0.0 Onboarding Guide - US Truck Drivers																
0.0.1 Detailed Driver Training Guide																
0.0.1.1 Detailed Driver Training Guide	0.0.1.1	Delivered	15	LMU	Certarus	X										
0.0.2 Road Test Evaluation																
0.0.2.1 Road Test Evaluation	0.0.2.1	Delivered	15	LMU	Certarus											
0.0.3 Onboarding Guide - IT Device Applications - Truck Driver																
0.0.3.1 Onboarding Guide - IT Device Applications - Truck Driver	0.0.3.1	Delivered	15	LMU	Certarus											
0.0.4 Paperwork - Conf/License (Truck Driver)																
0.0.4.1 Conf/License (Truck Driver)	0.0.4.1	Delivered	15	LMU	Certarus	X										
0.0.4.2 Conf/License Incident Reporting	0.0.4.2	Delivered	15	LMU	Certarus	X										
0.0.4.3 Conf/License Use of BHS Substances	0.0.4.3	Delivered	15	LMU	Certarus	X										
0.0.5 Emergency																
0.0.5.1 SOP (EMER) - Emergency Use (Mobile App)	0.0.5.1	Delivered	15	LMU	Certarus	X										
0.0.5.2 SOP (EMER) - Emergency Use (PC)	0.0.5.2	Delivered	15	LMU	Certarus	X										
0.0.5.3 SOP (EMER) - Emergency Use (App)	0.0.5.3	Delivered	15	LMU	Certarus	X										
0.0.6 Paperwork - Logistics (US)																
0.0.6.1 Shipping Papers (US) Completion Guide	0.0.6.1	Delivered	15	LMU	Certarus	X										
0.0.7 Paperwork - HSE																
0.0.7.1 HSE Completion Guide	0.0.7.1	Delivered	15	LMU	Certarus	X										
0.0.8 Onboarding Guide - CDL Truck Drivers																
0.0.8.1 Detailed Driver Training Guide																
0.0.8.1.1 Detailed Driver Training Guide	0.0.8.1.1	Delivered	15	LMU	Certarus	X										
0.0.8.2 Road Test Evaluation																
0.0.8.2.1 Road Test Evaluation	0.0.8.2.1	Delivered	15	LMU	Certarus											
0.0.8.3 Onboarding Guide - IT Device Applications - Truck Driver																
0.0.8.3.1 Onboarding Guide - IT Device Applications - Truck Driver	0.0.8.3.1	Delivered	15	LMU	Certarus											



Leveraging Technology to Enhance Safety

In-Vehicle
Monitoring
of Driver

Dispatch
Center
Staffed 24/7

Fire Protection
System

Emergency
Shut Down

Brake
Interlock
(Trailer Doors)

Passive
over-pressure
protection

Grounding
and Bonding
Equipment

Roll Stability
Support via
ABS

Smart Trailer
Technology



Investment Into Asset Safety



Inspections and Certifications

- DOT required inspection on brakes and chassis every 90 days
- Trailer cylinder and peak pressure device DOT recertification every 5 years
- Certarus ONLY
 - Trailer CNG component inspection every 90 – 120 days
 - Proprietary operations deck installed on all Titan trailers
 - Partnerships with Hexagon Agility and Quantum for continuous improvement around safety and reliability
 - All trailers equipped with Samsara, deflection plates, and electronic stability controls (ESC) on the chassis

Emergency Response Assistance Plan (ERAP)

Vehicle Incident - Precautions for Natural Gas

- Notify Certarus as soon as it is safe to do so.
 - Certarus 24-Hour Emergency Number: 1-877-500-7761
- Asset integrity - Certarus employee or designated person will inspect the trailer prior to moving.
- If trailer is damaged, contents will be offloaded to another trailer prior to removal.
- If fire or gas leak is present, secure the area.
 - Evacuate a large area around the CNG container:
 - One-mile (1.6km) radius for fires
 - Warning: Do not extinguish natural gas flames with a water or chemical fire extinguisher
 - To control fire, allow gas to burn until flame is completely exhausted (gas runs out)

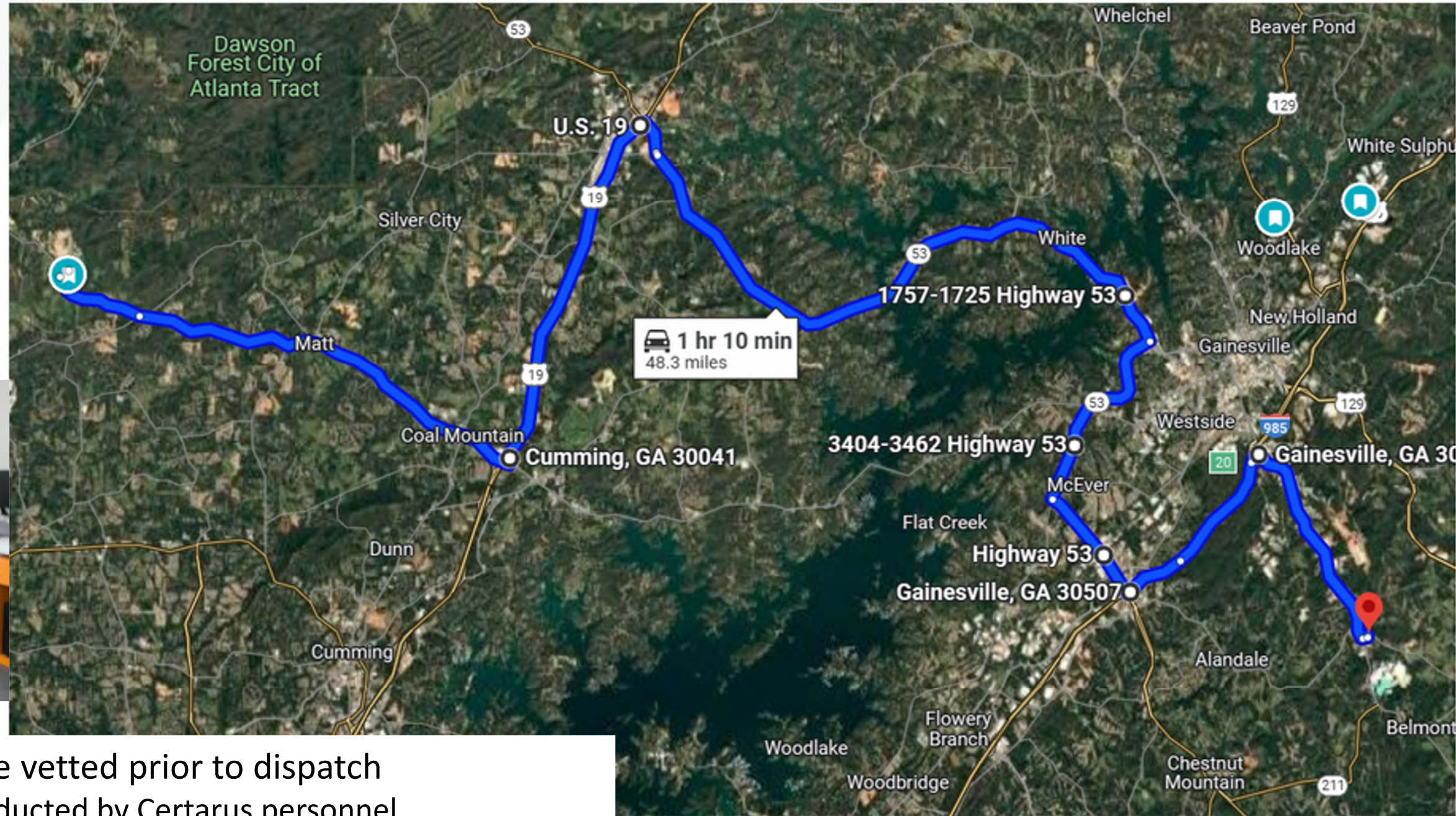
Additional Safety Precautions

- Certarus Emergency Response & Equipment Training
- Emergency First Responder Outreach

GUIDE 115	GASES - FLAMMABLE (INCLUDING REFRIGERATED LIQUIDS)	GUIDE 115	GASES - FLAMMABLE (INCLUDING REFRIGERATED LIQUIDS)
POTENTIAL HAZARDS		EMERGENCY RESPONSE	
FIRE OR EXPLOSION <ul style="list-style-type: none">• EXTREMELY FLAMMABLE.• Will be easily ignited by heat, sparks or flames.• Will form explosive mixtures with air.• Vapors from liquefied gas are initially heavier than air and spread along ground.CAUTION: Hydrogen (UN1049), Deuterium (UN1957), Hydrogen, refrigerated liquid (UN1966), Methane (UN1971) and Hydrogen and Methane mixture, compressed (UN2034) are lighter than air and will rise. Hydrogen and Deuterium fires are difficult to detect since they burn with an invisible flame. Use an alternate method of detection (thermal camera, broom handle, etc.)• Vapors may travel to source of ignition and flash back.• Cylinders exposed to fire may vent and release flammable gas through pressure relief devices.• Containers may explode when heated.• Ruptured cylinders may rocket.CAUTION: When LNG - Liquefied natural gas (UN1972) is released on or near water, product may vaporize explosively.		FIRE <ul style="list-style-type: none">• DO NOT EXTINGUISH A LEAKING GAS FIRE UNLESS LEAK CAN BE STOPPED.CAUTION: Hydrogen (UN1049), Deuterium (UN1957), Hydrogen, refrigerated liquid (UN1966) and Hydrogen and Methane mixture, compressed (UN2034) will burn with an invisible flame. Use an alternate method of detection (thermal camera, broom handle, etc.)Small Fire<ul style="list-style-type: none">• Dry chemical or CO₂.Large Fire<ul style="list-style-type: none">• Water spray or fog.• If it can be done safely, move undamaged containers away from the area around the fire.CAUTION: For LNG - Liquefied natural gas (UN1972) pool fires, DO NOT USE water. Use dry chemical or high-expansion foam.Fire Involving Tanks<ul style="list-style-type: none">• Fight fire from maximum distance or use unmanned master stream devices or monitor nozzles.• Cool containers with flooding quantities of water until well after fire is out.• Do not direct water at source of leak or safety devices; icing may occur.• Withdraw immediately in case of rising sound from venting safety devices or discoloration of tank.• ALWAYS stay away from tanks in direct contact with flames.• For massive fire, use unmanned master stream devices or monitor nozzles; if this is impossible, withdraw from area and let fire burn.	
HEALTH <ul style="list-style-type: none">• Vapors may cause dizziness or asphyxiation without warning, especially when in closed or confined areas.• Some may be irritating if inhaled at high concentrations.• Contact with gas, liquefied gas or cryogenic liquids may cause burns, severe injury and/or frostbite.• Fire may produce irritating and/or toxic gases.		SPILL OR LEAK <ul style="list-style-type: none">• ELIMINATE all ignition sources (no smoking, flares, sparks or flames) from immediate area.• All equipment used when handling the product must be grounded.• Do not touch or walk through spilled material.• Stop leak if you can do it without risk.• If possible, turn leaking containers so that gas escapes rather than liquid.• Use water spray to reduce vapors or divert vapor cloud drift. Avoid allowing water runoff to contact spilled material.• Do not direct water at spill or source of leak.CAUTION: For LNG - Liquefied natural gas (UN1972), DO NOT apply water, regular or alcohol-resistant foam directly on spill. Use a high-expansion foam if available to reduce vapors.• Prevent spreading of vapors through sewers, ventilation systems and confined areas.• Isolate area until gas has dispersed.CAUTION: When in contact with refrigerated/cryogenic liquids, many materials become brittle and are likely to break without warning.	
PUBLIC SAFETY <ul style="list-style-type: none">• CALL 911. Then call emergency response telephone number on shipping paper. If shipping paper not available or no answer, refer to appropriate telephone number listed on the inside back cover.• Keep unauthorized personnel away.• Stay upwind, uphill and/or upstream.• Many gases are heavier than air and will spread along the ground and collect in low or confined areas (sewers, basements, tanks, etc.).		FIRST AID <ul style="list-style-type: none">• Refer to the "General First Aid" section.Specific First Aid:<ul style="list-style-type: none">• Clothing frozen to the skin should be thawed before being removed.• In case of contact with liquefied gas, only medical personnel should attempt thawing frosted parts.• In case of burns, immediately cool affected skin for as long as possible with cold water. Do not remove clothing if adhering to skin.	
PROTECTIVE CLOTHING <ul style="list-style-type: none">• Wear positive pressure self-contained breathing apparatus (SCBA).• Structural firefighters' protective clothing provides thermal protection but only limited chemical protection.• Always wear thermal protective clothing when handling refrigerated/cryogenic liquids.			
EVACUATION <ul style="list-style-type: none">Immediate precautionary measure<ul style="list-style-type: none">• Isolate spill or leak area for at least 100 meters (330 feet) in all directions.Large Spill<ul style="list-style-type: none">• Consider initial downwind evacuation for at least 800 meters (1/2 mile).Fire<ul style="list-style-type: none">• If tank, rail tank car or highway tank is involved in a fire, ISOLATE for 1600 meters (1 mile) in all directions; also, consider initial evacuation for 1600 meters (1 mile) in all directions.• In fires involving Liquefied Petroleum Gases (LPG) (UN1075), Butane (UN1011), Butylene (UN1012), Isobutylene (UN1055), Propylene (UN1077), Isobutane (UN1969), and Propane (UN1978), also refer to the "BLEVE - Safety Precautions" section.			

Page 160 ERG 2024 Page 161 ERG 2024

Proposed Route



Proposed HAZMAT route to be vetted prior to dispatch

- Route hazard assessment conducted by Certarus personnel
- Drivers will be dispatched to site using only the approved HAZMAT route

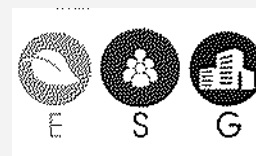
Recent RNG Partners



“Certarus proved to be an excellent partner this last year with a great safety track record along with expertise in transporting and decompressing natural gas, making them the perfect partner for our projects”

- Chris Roach, President of Roeslein Alternative Energy

Macro



Signed a multiyear contract to support multiple projects in Missouri



“Certarus’ safety track record, as well as years of expertise in compressing, transporting, and decompressing natural gas, made them the perfect partner for this project.”

- Scott Gramm, Manager of Renewable Natural Gas supply with FortisBC

Target

FortisBC 30BY30 target which is a goal to have 15 per cent of their natural gas supply be carbon neutral by 2030



First RNG project in Canada

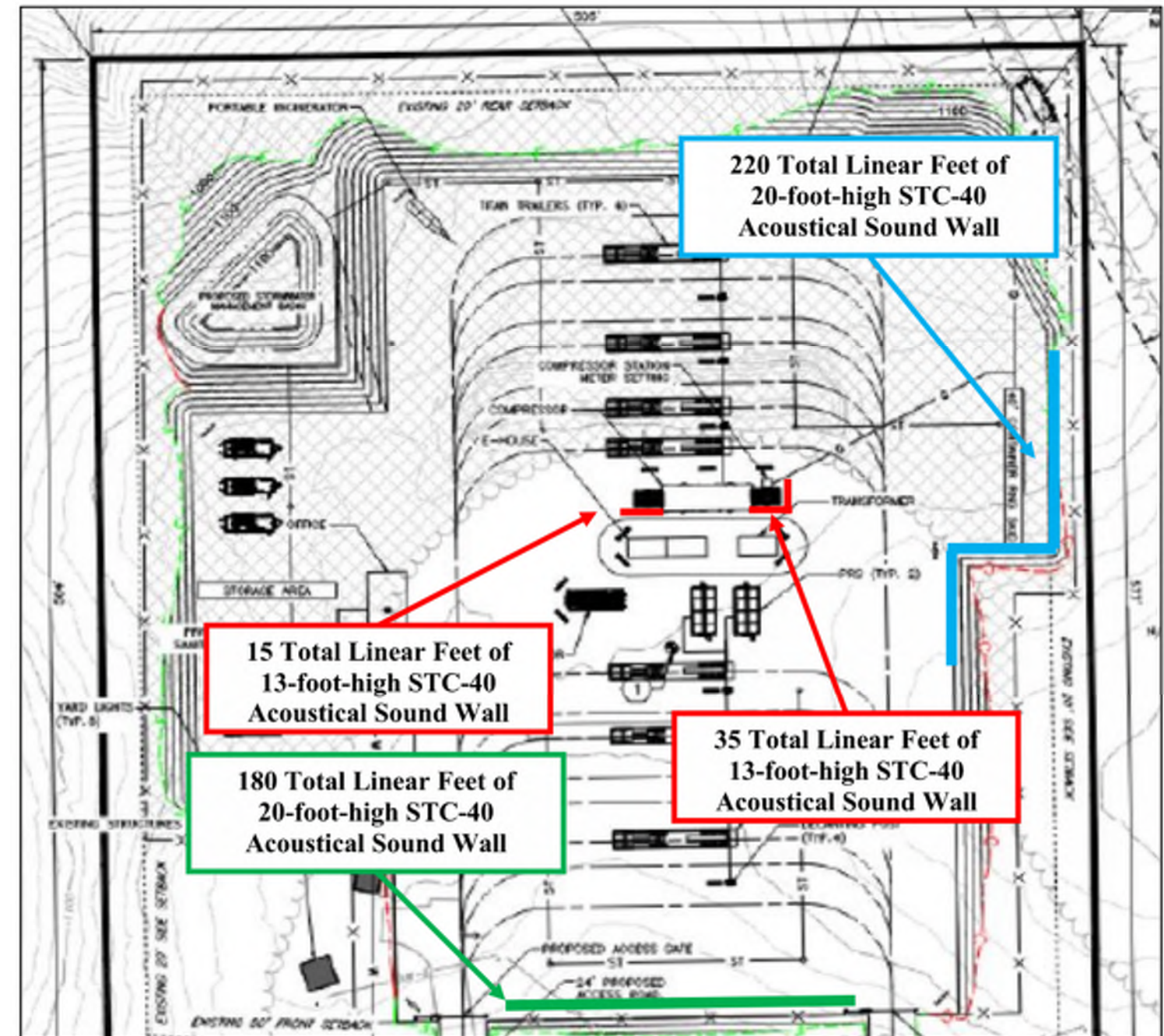
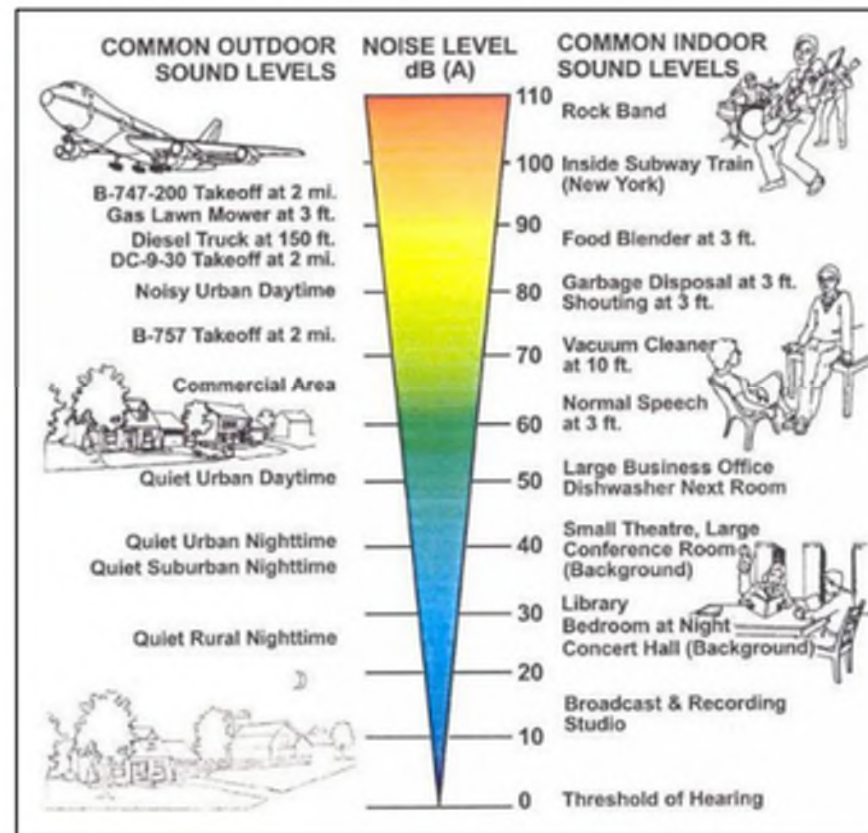
Questions?

Noise Mitigation

Table 4-6 Mitigated - Predicted Changes in Overall Noise Level

Receptor	Predicted dB(A)	Representative Ambient Sound Level dB(A)	Combined (Ambient + Predicted)	Difference (combined - ambient)	Perceptibility
1	41	48.3 L90	49.0	0.7	Likely Not Perceptible
2	43	48.3 L90	49.4	1.1	Likely Not Perceptible
3	42	48.3 L90	49.2	0.9	Likely Not Perceptible
4	40	48.3 L90	48.9	0.6	Likely Not Perceptible
5	27	48.3 L90	48.3	0.0	Likely Not Perceptible
6	42	48.3 L90	49.2	0.9	Likely Not Perceptible
7	44	48.3 L90	49.7	1.4	Likely Not Perceptible
8	42	48.3 L90	49.2	0.9	Likely Not Perceptible
9	46	48.3 L90	50.3	2.0	Likely Not Perceptible

- Sound walls within the facility are planned to reduce noise levels in order to comply to the Forsyth Co noise ordinances and exceed the minimum requirements.



Visual Example of RNG Site

- The below facility is an example of the RNG Facility that will be located at the Eagle Point Landfill in Forsyth County. (Not the Hall Co Facility)

