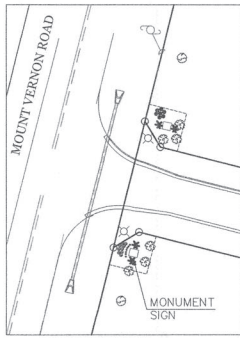


eFiled and eRecorded
 DATE: 01/26/2023
 TIME: 4:23 PM
 PLAT BOOK: 883
 PAGE: 77 - 81
 FILING FEES: \$50.00
 PART ID: 3153517043
 RECORDED BY: NB
 Charles Baker, C.S.C
 Hall County, GA



FRONTAGE TREES

HWY 284

TOTAL FRONTAGE = 667 LF
 ONE TREE PER 30 FEET REQUIRED
 667 / 30 = 22 TREES & SHRUBS
 REQUIRED

- 10 EXISTING TREES TO REMAIN
- 12 TREES PLANTED
- 23 SHRUBS PLANTED

NEW TREE DENSITY CALCULATIONS

TYPE	DBH	AMOUNT	TOTAL UNITS
EASTERN RED CEDAR	2"	4 x 0.5 =	2.0
SCARLET OAK	2"	2 x 0.5 =	1.0
SOUTHERN MAGNOLIA	2"	6 x 0.5 =	3.0
		12	6.0
		TOTAL TREES	TOTAL UNITS

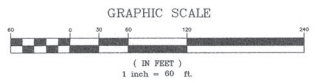
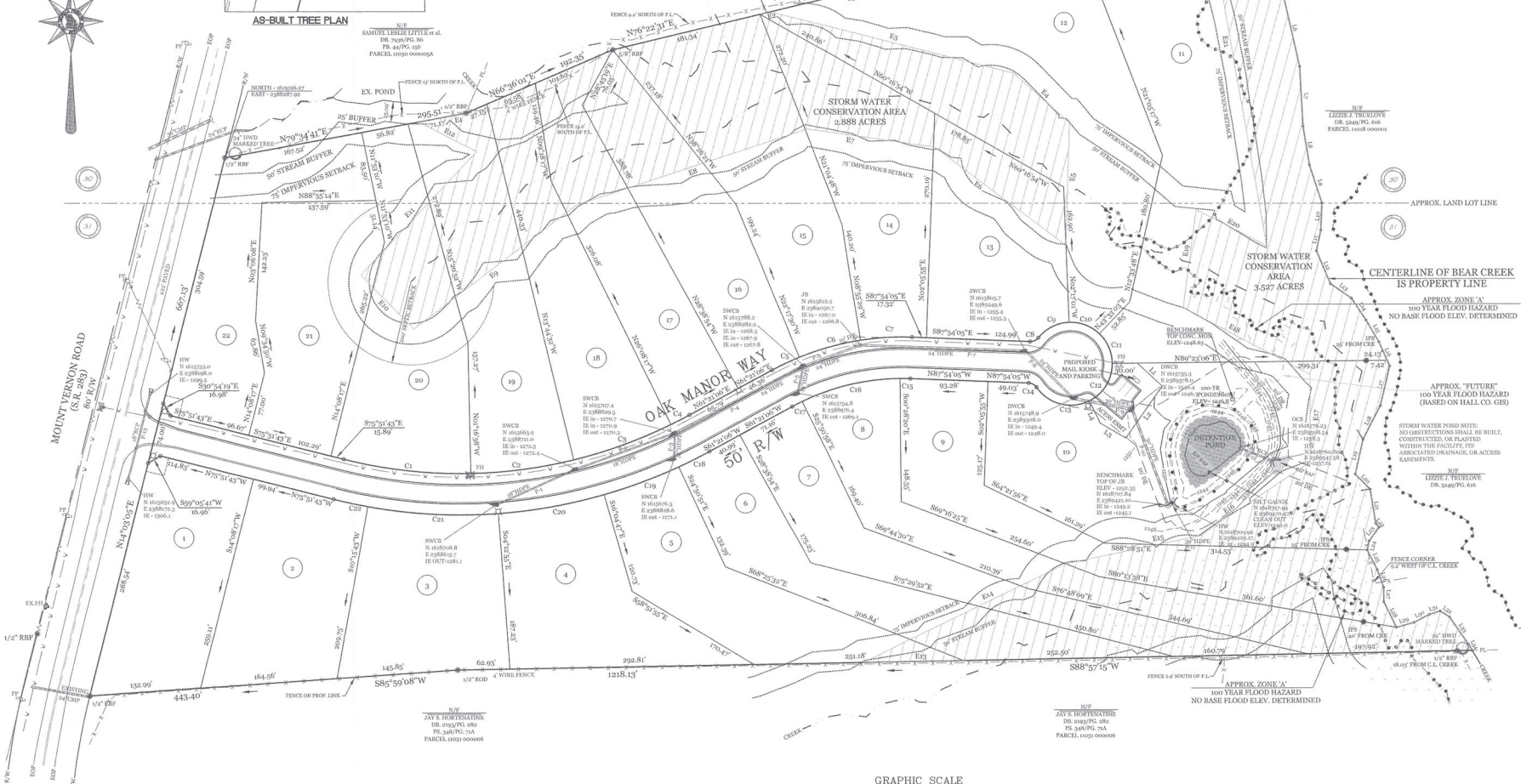
TREE DENSITY CALCULATIONS

SITE = 25.6 ACRES

25.6 x 15 UNITS PER ACRE = 384 UNITS
 REQUIRED

550.1 UNITS TO REMAIN
 6.0 UNITS TO BE PLANTED

556.1 TOTAL UNITS PROPOSED
 NO ADDITIONAL UNITS REQUIRED



**GEORGIA PREMIER
 LAND SERVICES, INC.**
 PROFESSIONAL LAND SURVEYING
 3900 HUNTERS HILL ROAD
 SUITE 100
 ATLANTA, GEORGIA 30339
 (770) 644-2904 FAX (770) 644-2955
 LAND SURVEYING CO# 4177



FINAL PLAT FOR:
MOUNT VERNON MANOR
 LOCATED IN LAND LOTS 30 AND 31 OF THE 11TH LAND DISTRICT
 HALL COUNTY, GEORGIA
 SCALE 1" = 60'



DATE	NO	DESCRIPTION

1/9/23
 DATE
 88888
 PLAT NUMBER
 NEM
 DRAWN BY
 4 of 5