

AF 24975B

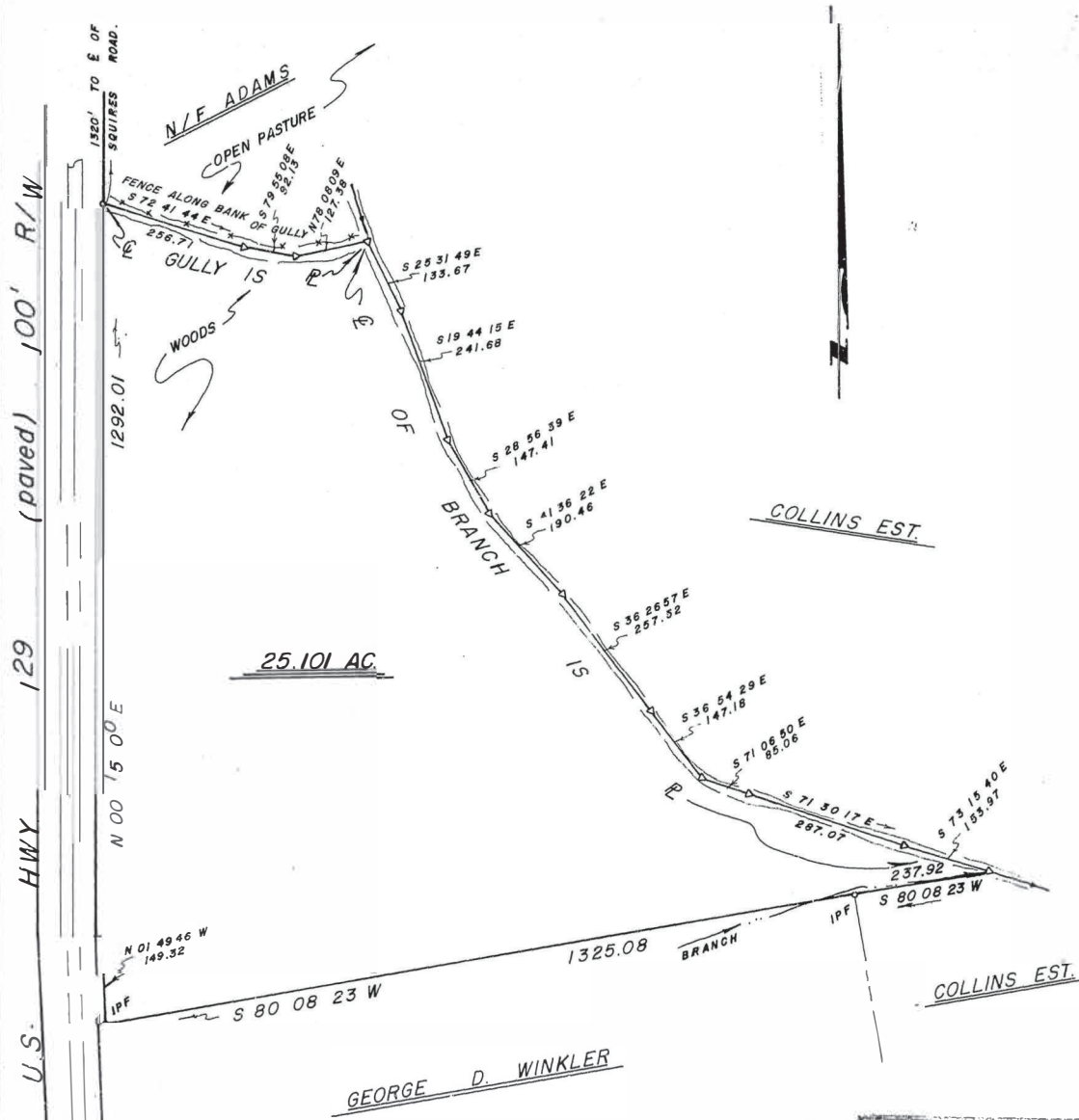
Revised August 11, 1987

1 Dwight S. Wood, Cedar

A TOPCON RTS-2B TOTAL STATION was used to obtain the linear and angular measurements used in the preparation of this plat.

The field data upon which this plat is based has a closure precision of one foot in 17,785 feet and an angular error of 5" per angle point and was adjusted using the COMPASS rule.

This survey has been calculated for closure and is found to be accurate within one foot in 1,088,470 feet.



In my opinion, this survey conforms to the requirements of the laws of the State of Georgia.

W. T. Dunahoo
 Georgia Registered Professional Surveyor
 Member - State of Georgia
 No. 1577

SURVEY FOR					STATE OF GEORGIA				
THOMAS SIMS ESTATE									
CITY	GMD	COUNTY	SCALE	DATE					
	268	HALL	1" = 200'	7-27-87					
W. T. DUNAHOO AND ASSOCIATES, INC.									
ATLANTA HWY			PH-867-3911		WINNER, GEORGIA				

IPF - IRON PIN SET
 IPF - IRON PIN FOUND