

The images below are representative of the style and concepts.



This aerial map illustrates a wetland area with various management zones and features. The map includes a legend with the following categories:

- Wetland Boundary:** Indicated by a red dashed line.
- Wetland Type:**
 - III:** Represented by a green cross-hatch pattern.
 - II:** Represented by a blue cross-hatch pattern.
 - I:** Represented by a yellow cross-hatch pattern.
- Management Zones:**
 - A:** Yellow square.
 - B:** Red square.
 - C:** White square with black dots.
 - D:** Orange square.
 - E:** White square with black dots.
 - F:** Brown square.
 - G:** Yellow rectangle.
 - H:** Blue square.
- Other Features:**
 - 1:** Yellow circle.
 - 2:** Red circle.
 - 3:** Yellow circle.
 - 4:** Yellow circle.
 - 5:** Yellow circle.
 - 6:** Yellow circle.
 - 7:** Yellow circle.
 - 8:** Red circle.
 - 9:** Yellow circle.

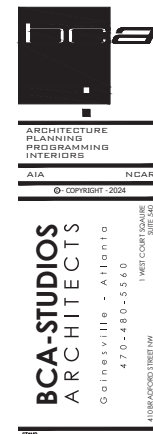
The map shows a central wetland area with a large pond and a smaller pond. The wetland is divided into several management zones (A-H) and is surrounded by a red dashed line. The map also shows a network of roads and a river.

- 1 MAIN ENTRY GATE
- 2 FORMER CAR BARN
- 3 MAIN HOUSE
- 4 COVERED BRIDGE
- 5 HISTORIC TANNERS MILL
- 6 HOUSE
- 7 GATE
- 8 HAY BARN AND STABLES
- 9 POWER EASEMENT - UG

A	MAIN ENTRY GATE
B	EVENTS BUILDING
C	RETREAT - OUTDOOR AMENITIES AND ACTIVITIES
D	RETREAT LODGING
E	HORSE EQUESTRIAN AREA
F	OUTREACH MINISTRY WHOLENESS FACILITY FAMILY COUNSELING WELLNESS CTR
G	CABINS COTTAGES
H	EMPLOYEE HOUSING SINGLE FAMILY DWELLING
X	NATURE TRAILS

Note: The plan/location(s) depicted are only to show density and approximated zones. Locations of actual proposed structures and facilities may vary depending on final design and programming.

- I RETREAT FACILITIES AREA
- II INTENT IS TO LEAVE NATURAL AND OPEN WITH MINIMAL STRUCTURES
- III NATURAL BUFFER ZONE

[illegible]

SHILOH RANCH

PROPOSED PROPERTY ZONING MAP

PHASE

SHEET TITLE

SHEET NO.

2.17.2025

Item 7



Line Table		
LINE #	BEARING	LENGTH (FT)
L1	N48° 45' 49"E	37.57
L2	S89° 48' 13"W	100.24
L3	N80° 22' 39"W	115.03
L4	N67° 09' 48"W	132.08
L5	N66° 29' 23"W	163.27
L6	N66° 28' 49"W	63.76
L7	N80° 34' 59"W	62.14
L8	N60° 19' 15"W	41.59
L9	N12° 05' 03"W	39.04
L10	N24° 51' 57"E	57.00
L11	N37° 03' 19"E	122.15
L12	N40° 52' 51"E	128.34
L13	N32° 18' 38"E	113.86
L14	N21° 33' 02"E	114.03
L15	N22° 19' 44"E	91.30
L16	N37° 55' 42"E	95.62
L17	N07° 24' 18"E	53.83
L18	N27° 44' 53"W	34.38
L19	N77° 24' 02"W	51.40
L20	N74° 02' 51"W	58.27

LINE #	BEARING	LENGTH (FT)	LINE #	BEARING	LENGTH (FT)	LINE #	BEARING	LENGTH (FT)
L121	S13° 39' 21"E	25.37	L141	S27° 27' 37"W	28.28	L161	N54° 41' 29"W	62.68
L122	N47° 34' 10"E	29.02	L142	S35° 34' 32"W	24.27	L162	N70° 48' 05"W	117.09
L123	S23° 28' 58"E	34.15	L143	S45° 43' 27"W	46.65	L163	N84° 41' 15"W	12.66
L124	S05° 17' 57"W	18.31	L144	N80° 05' 30"W	12.19	L164	S04° 26' 28"W	83.31
L125	S82° 12' 35"W	28.52	L145	S83° 52' 26"W	13.86	L165	S09° 05' 34"W	43.81
L126	S02° 50' 01"E	40.44	L146	N83° 47' 24"W	8.24	L166	S07° 25' 14"E	187.82
L127	N80° 00' 00"W	38.92	L147	S08° 31' 28"W	7.34	L167	S08° 42' 46"E	195.33
L128	S17° 42' 50"W	41.24	L148	S23° 29' 30"W	21.85	L168	S04° 46' 41"E	23.29
L129	S42° 35' 39"W	73.85	L149	S86° 23' 43"W	56.05	L169	S29° 29' 12"W	143.46
L130	S23° 27' 33"W	72.32	L150	S01° 09' 00"W	39.12	L170	S26° 49' 42"W	180.15
L131	S21° 04' 38"W	175.23	L151	S23° 54' 41"W	76.37	L171	S22° 38' 42"W	121.70
L132	S21° 26' 42"W	148.98	L152	S31° 21' 01"W	107.49	L172	S24° 21' 14"W	140.41
L133	S23° 20' 46"W	125.14	L153	S61° 25' 56"E	32.21	L173	S34° 50' 56"W	156.70
L134	S09° 45' 54"W	878.39	L154	S08° 54' 31"E	143.42	L174	S17° 48' 34"W	78.83
L135	N80° 02' 28"W	441.17	L155	S46° 27' 40"W	111.58	L175	S10° 21' 11"W	145.58
L136	N84° 16' 59"W	165.59	L156	S37° 51' 15"W	12.62	L176	S19° 56' 26"W	143.94
L137	S42° 33' 39"W	13.45	L157	S06° 38' 26"E	188.86	L177	S08° 03' 44"W	68.22
L138	S22° 14' 21"E	4.02	L158	N36° 21' 24"W	22.24	L178	S12° 33' 05"E	121.43
L139	S44° 36' 04"W	15.82	L159	S22° 31' 12"W	5.39	L179	N82° 05' 16"W	30.31
L140	S06° 29' 09"E	29.70	L160	S87° 59' 28"W	31.86	L180	N82° 05' 16"W	838.08

LINE #	BEARING	LENGTH (FT)	LINE #	BEARING	LENGTH (FT)
L181	N33° 28' 24"W	1.66	L201	N62° 14' 05"W	153.24
L182	N33° 34' 25"W	79.84	L202	N54° 18' 22"W	72.22
L183	N14° 22' 06"W	7.38	L203	N00° 30' 01"W	70.49
L184	N16° 30' 13"E	196.40	L204	N11° 30' 34"E	27.35
L185	N05° 55' 16"W	102.13	L205	S48° 32' 10"W	43.97
L186	N38° 52' 40"W	545.51	L206	N09° 45' 54"E	890.62
L187	N55° 29' 51"W	174.25	L207	S62° 43' 41"E	38.38
L188	N41° 23' 10"E	251.66	L208	S00° 34' 31"W	107.02
L189	N41° 23' 10"E	30.60	L209	S04° 52' 18"E	221.07
L190	N18° 51' 39"W	32.51	L210	S00° 12' 56"W	111.58
L191	N22° 45' 50"E	59.57	L211	S01° 27' 14"W	100.11
L192	N48° 40' 09"E	121.31	L212	S02° 17' 15"W	70.79
L193	N46° 52' 27"E	152.00	L213	S11° 52' 57"W	73.09
L194	N69° 51' 37"E	118.40	L214	S41° 59' 26"W	76.54
L195	N62° 35' 44"E	144.33	L215	S40° 10' 17"W	61.29
L196	N56° 15' 50"E	175.89	L216	S46° 47' 14"W	73.09
L197	N46° 07' 41"E	85.40	L217	S49° 50' 52"W	44.21
L198	N11° 14' 28"E	85.16			
L199	N03° 21' 50"W	83.02			
L200	N49° 45' 23"W	111.20			

CURVE TABLE			
CURVE #	CHORD BEARING	CHORD LENGTH (FT)	ARC LENGTH (FT)
C1	S34° 30' 57"E	40.13	40.23
C2	S37° 48' 02"E	202.96	204.09
C3	S45° 49' 11"E	189.87	190.02
C4	S50° 17' 48"E	123.99	124.29
C5	S75° 38' 57"E	177.82	180.93
C6	N80° 26' 26"E	86.49	86.62
C7	N83° 27' 58"E	160.47	161.56
C8	N89° 22' 10"E	132.99	133.07
C9	N72° 36' 57"E	178.35	180.37
C10	S48° 38' 48"E	44.52	45.00
C11	S47° 46' 18"E	105.39	106.39
C12	S42° 09' 27"W	143.35	143.48
C13	S19° 38' 24"W	197.49	202.54
C14	S02° 38' 49"W	64.52	64.69
C15	S13° 19' 12"W	76.52	76.85
C16	S55° 15' 20"W	99.38	105.01
C17	N73° 21' 00"W	76.91	78.29
C18	N23° 58' 15"W	303.60	305.02
C19	N01° 04' 03"E	348.56	352.82
C20	N05° 17' 29"E	275.38	277.14

CURVE #	CHORD BEARING	CHORD LENGTH (FT)	ARC LENGTH (FT)	RADIUS (FT)
C21	N02° 23' 59"W	161.76	164.01	285.14
C22	N47° 11' 16"W	354.42	356.49	1053.15
C23	N51° 59' 12"W	153.02	153.11	1248.35

AREA:
TRACT 1 =
445.87 AC

NO DEEDS FOUND OR
FURNISHED TO THE
SURVEYOR THAT CLEARLY
INDICATES THE
CONTINUATION OF THE
GA POWER EASEMENT;
HOWEVER BASED ON
HISTORIC AERIAL PHOTOS
AND CURRENT GROUND
CONDITIONS POWER
EASEMENT MAY AFFECT
THIS PROPERTY

AREA:
TRACT 2 = 1.986 AC

Rochester **DECM**
Rochester and Associates, LLC
4000 Peachtree Industrial Blvd., Suite 100
Atlanta, Georgia 30341
770.718.0869 p | www.rochesterdec.com

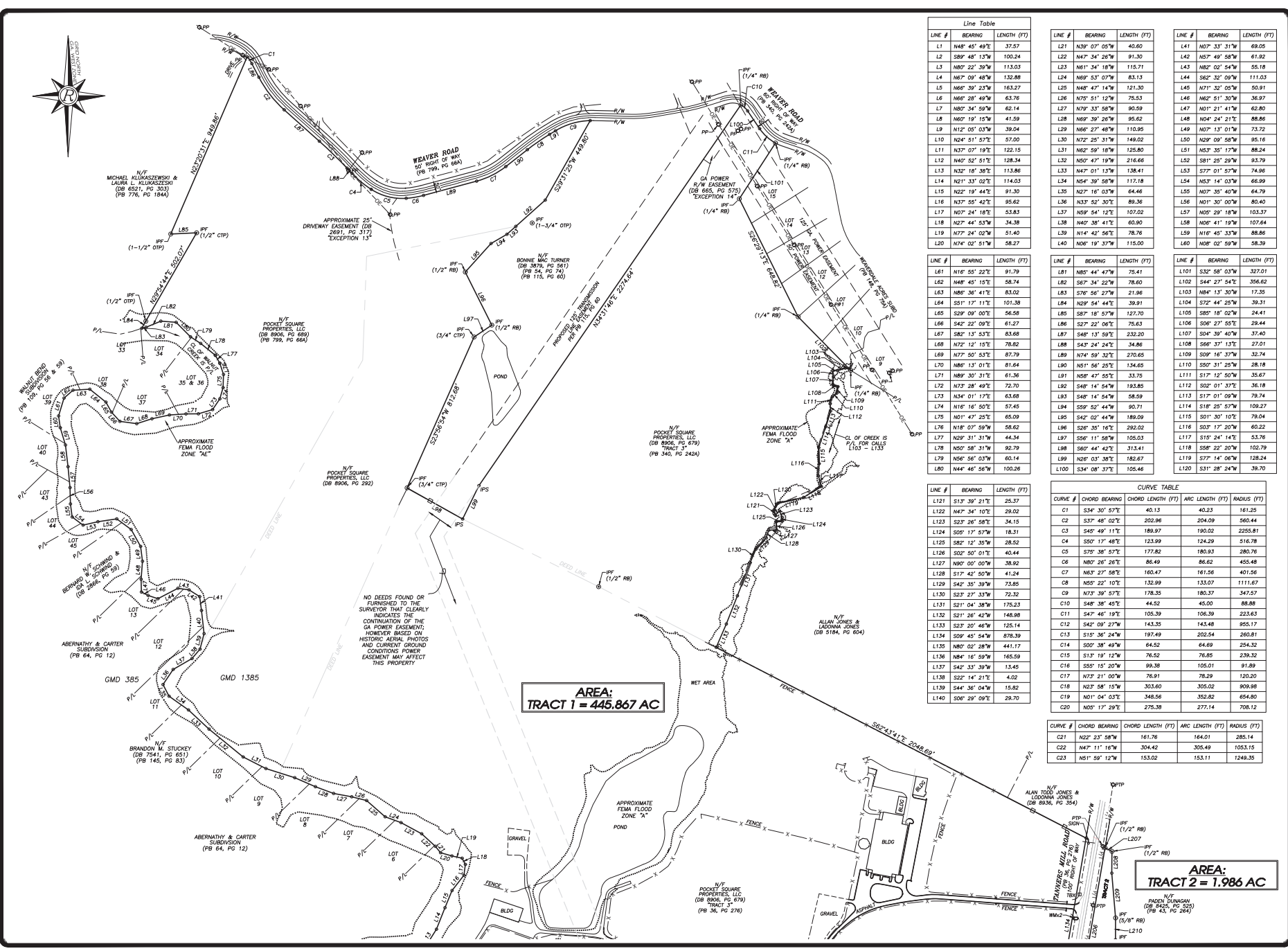
ALL-STATE LAND TITLE SURVEY
TANNERS MILL CIRCLE, LLC, a Georgia limited liability company
POCKET SQUARE PROPERTIES, LLC
& CHICAGO TITLE INSURANCE COMPANY
G.A.S. 385 & 1385
HALL COUNTY, GEORGIA

REVISIONS	
NO.	DESCRIPTION

GRAPHIC SCALE
0' 100' 200' 400'

GEORGIA REGISTERED
PROFESSIONAL SURVEYOR
S. CHANDLER

SHEET
2
3
DATE
12/20/2023
DWG. NO.
2023-001



Line Table		
LINE #	BEARING	LENGTH (FT)
L1	N48° 45' 49"E	37.57
L2	S89° 48' 13"W	100.24
L3	N82° 22' 39"W	113.03
L4	N67° 09' 40"W	132.88
L5	N86° 39' 23"W	163.27
L6	N86° 28' 49"W	63.76
L7	N87° 34' 59"W	62.14
L8	N87° 19' 15"W	41.59
L9	N86° 27' 48"W	39.04
L10	N24° 51' 57"E	57.00
L11	N37° 07' 19"E	122.15
L12	N40° 52' 51"E	128.34
L13	N32° 18' 38"E	113.86
L14	N21° 33' 02"E	114.03
L15	N22° 19' 44"E	91.30
L16	N37° 55' 42"E	95.62
L17	N07° 24' 18"E	53.83
L18	N27° 44' 53"W	34.38
L19	N77° 24' 02"W	51.40
L20	N74° 02' 51"W	58.27

LINE #	BEARING	LENGTH (FT)
L81	N16° 55' 22"E	91.79
L82	N48° 45' 15"E	58.74
L83	N86° 36' 41"E	83.02
L84	S51° 17' 11"E	101.38
L85	S29° 09' 00"E	56.58
L86	S42° 22' 09"E	61.27
L87	S87° 13' 53"E	83.68
L88	N72° 12' 15"E	78.82
L89	N77° 50' 53"E	87.79
L90	N81° 54' 25"E	134.65
L91	N58° 47' 55"E	33.75
L92	N73° 28' 49"E	72.70
L93	N34° 01' 17"E	63.68
L94	N16° 16' 50"E	57.45
L95	N01° 47' 25"E	65.09
L96	N18° 07' 59"W	56.62
L97	N29° 31' 31"W	44.34
L98	N50° 58' 31"W	92.79
L99	N56° 56' 03"W	60.14
L80	N44° 46' 56"W	100.26

LINE #	BEARING	LENGTH (FT)
L121	S13° 39' 21"E	25.37
L122	N47° 34' 10"E	29.02
L123	S23° 26' 58"E	34.15
L124	S50° 17' 57"W	18.31
L125	S82° 12' 35"W	28.52
L126	S02° 50' 01"E	40.44
L127	N00° 00' 00"W	38.92
L128	S17° 42' 50"W	41.24
L129	S42° 35' 39"W	73.85
L130	S23° 27' 33"W	72.32
L131	S21° 04' 38"W	175.23
L132	S21° 26' 42"W	148.98
L133	S23° 20' 46"W	125.14
L134	S09° 45' 54"W	878.39
L135	N80° 02' 28"W	441.17
L136	N84° 16' 59"W	165.59
L137	S42° 33' 39"W	13.45
L138	S22° 14' 21"E	4.02
L139	S44° 38' 04"E	15.82
L140	S06° 29' 09"E	29.70

LINE #	BEARING	LENGTH (FT)
L21	N39° 07' 05"W	40.60
L22	N47° 34' 21"W	91.30
L23	N81° 34' 18"W	115.71
L24	N57° 57' 07"W	83.13
L25	N48° 47' 14"W	121.30
L26	N75° 51' 52"W	75.53
L27	N79° 33' 58"W	90.59
L28	N89° 39' 26"W	95.62
L29	N86° 27' 48"W	110.95
L30	N72° 25' 31"W	149.02
L31	N62° 59' 18"W	125.80
L32	N50° 47' 19"W	216.66
L33	N47° 01' 13"W	138.41
L34	N54° 39' 58"W	117.18
L35	N27° 16' 03"W	64.46
L36	N33° 52' 30"E	89.36
L37	N59° 54' 12"E	107.02
L38	N40° 38' 41"E	60.90
L39	N16° 45' 33"W	88.86
L40	N06° 02' 59"W	58.59

LINE #	BEARING	LENGTH (FT)
L81	N85° 44' 43"W	75.41
L82	S67° 34' 22"W	78.60
L83	S76° 56' 27"W	21.96
L84	N24° 54' 44"E	39.91
L85	S87° 18' 57"W	127.70
L86	S27° 22' 55"E	75.63
L87	S48° 13' 59"E	232.20
L88	S43° 24' 24"E	34.86
L89	N74° 50' 32"E	270.85
L90	N51° 54' 25"E	134.65
L91	N58° 47' 55"E	33.75
L92	S48° 14' 54"W	193.85
L93	S48° 14' 54"W	58.59
L94	S59° 52' 44"W	90.71
L95	S42° 03' 44"W	189.09
L96	S26° 35' 16"E	292.02
L97	S56° 11' 58"W	105.03
L98	S60° 44' 42"E	313.41
L99	N26° 03' 38"E	182.67
L100	S34° 08' 37"E	105.46

LINE #	BEARING	LENGTH (FT)
L41	N07° 23' 31"W	69.05
L42	N57° 49' 58"W	61.92
L43	N82° 02' 54"W	56.18
L44	S62° 32' 54"W	111.03
L45	N71° 32' 05"W	50.91
L46	N62° 51' 30"W	36.97
L47	N01° 21' 41"W	62.80
L48	N04° 24' 21"E	88.86
L49	N07° 13' 01"W	73.72
L50	N29° 09' 58"W	95.16
L51	N53° 35' 17"W	88.24
L52	S81° 25' 29"W	93.79
L53	S77° 01' 57"W	74.96
L54	N53° 14' 03"W	66.99
L55	N07° 35' 40"W	64.79
L56	N01° 30' 00"W	80.40
L57	N09° 29' 18"W	103.37
L58	N06° 41' 19"W	107.64
L59	N16° 45' 33"W	88.86
L60	N08° 02' 59"W	58.59

LINE #	BEARING	LENGTH (FT)
L101	S32° 58' 03"W	327.01
L102	S44° 27' 54"E	356.62
L103	N84° 13' 30"W	17.35
L104	S72° 44' 25"W	39.31
L105	S85° 18' 02"W	24.41
L106	S07° 27' 55"E	29.44
L107	S04° 38' 40"W	37.40
L108	S86° 37' 17"E	27.01
L109	S09° 14' 37"W	32.74
L110	S50° 31' 25"W	28.18
L111	S17° 12' 50"W	35.67
L112	S02° 01' 37"E	36.18
L113	S17° 01' 09"W	79.74
L114	S18° 25' 57"W	109.27
L115	S01° 30' 10"E	79.04
L116	S03° 17' 20"W	60.22
L117	S15° 24' 14"E	53.76
L118	S58° 22' 20"W	102.79
L119	S77° 14' 06"W	128.24
L120	S31° 28' 24"W	39.70

CURVE TABLE				
CURVE #	CHORD BEARING	CHORD LENGTH (FT)	ARC LENGTH (FT)	RADIUS (FT)
C1	S34° 30' 57"E	40.13	40.23	181.25
C2	S37° 48' 02"E	252.96	254.09	560.44
C3	S45° 49' 11"E	189.97	190.02	225.81
C4	S50° 17' 48"E	123.99	124.29	516.78
C5	S76° 38' 57"E	177.82	180.83	280.76
C6	N80° 26' 26"E	86.49	86.62	455.48
C7	N63° 27' 58"E	160.47	161.56	401.56
C8	N55° 22' 10"E	132.99	133.07	1111.67
C9	N73° 39' 57"E	178.35	180.37	347.57
C10	S48° 38' 45"E	44.52	45.00	88.88
C11	S47° 46' 19"E	105.39	106.39	223.63
C12	S42° 09' 27"W	143.35	143.48	955.17
C13	S15° 35' 24"W	197.49	202.54	260.81
C14	S00° 38' 49"W	64.52	64.69	254.32
C15	S13° 19' 12"W	76.52	76.85	239.32
C16	S55° 15' 20"W	89.38	105.01	91.89
C17	N77° 21' 00"W	78.91	78.29	120.20
C18	N37° 58' 15"W	353.60	355.02	909.98
C19	N01° 04' 03"E	346.56	352.82	654.80
C20	N02° 17' 29"E	275.30	277.14	708.12

CURVE #	CHORD BEARING	CHORD LENGTH (FT)	ARC LENGTH (FT)	RADIUS (FT)
C21	N22° 23' 58"W	161.76	164.01	285.14
C22	N47° 11' 16"W	304.42	305.49	1053.15
C23	N51° 59' 12"W	153.02	153.11	1249.35

AREA:
TRACT 1 = 445.867 AC

AREA:
TRACT 2 = 1.986 AC

Rochester **DECM**

Rochester and Associates, LLC
400 Peachtree Street, NE
Atlanta, Georgia 30308
770.180.0800 p | www.rochesterdecm.com

TANNERS MILL CIRCLE, LLC, a Google linked entity company
POCKET SQUARE PROPERTIES, LLC
& CHICAGO TITLE INSURANCE COMPANY

ALWAYS LAND TITLE SURVEY

NO.	DATE	DESCRIPTION	REVISIONS

GRAPHIC SCALE

0' 100' 200' 400' 600'

GEORGIA REGISTERED
Professional Surveyor
S. O. DOWNEY

SHEET 3 of 3

DATE: 10/20/2023

JOB NO.: 2023-001

DWG NO.: 1