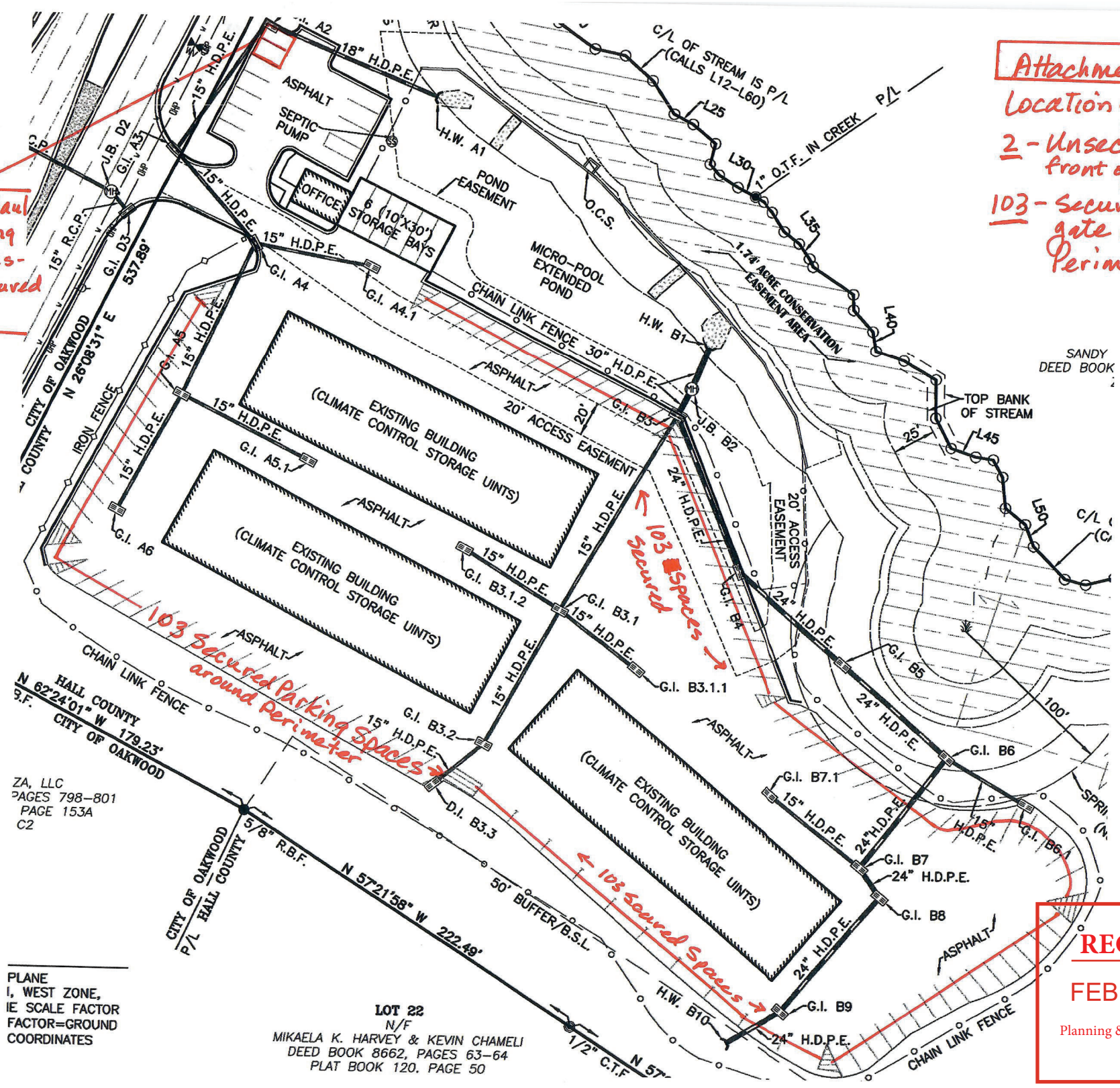


**Attachment B**  
**Location of Parking**  
**2 - Unsecured in front of office**  
**103 - Secured inside gate around Perimeter**

**2 UHaul Parking Spaces - unsecured lot**



SANDY DEED BOOK

**RECEIVED**  
**FEB 10, 2025**  
Planning & Zoning Department

ZA, LLC  
PAGES 798-801  
PAGE 153A  
C2

PLANE  
I, WEST ZONE,  
IE SCALE FACTOR  
FACTOR=GROUND  
COORDINATES

LOT 22  
N/F  
MIKAELA K. HARVEY & KEVIN CHAMELI  
DEED BOOK 8662, PAGES 63-64  
PLAT BOOK 120, PAGE 50