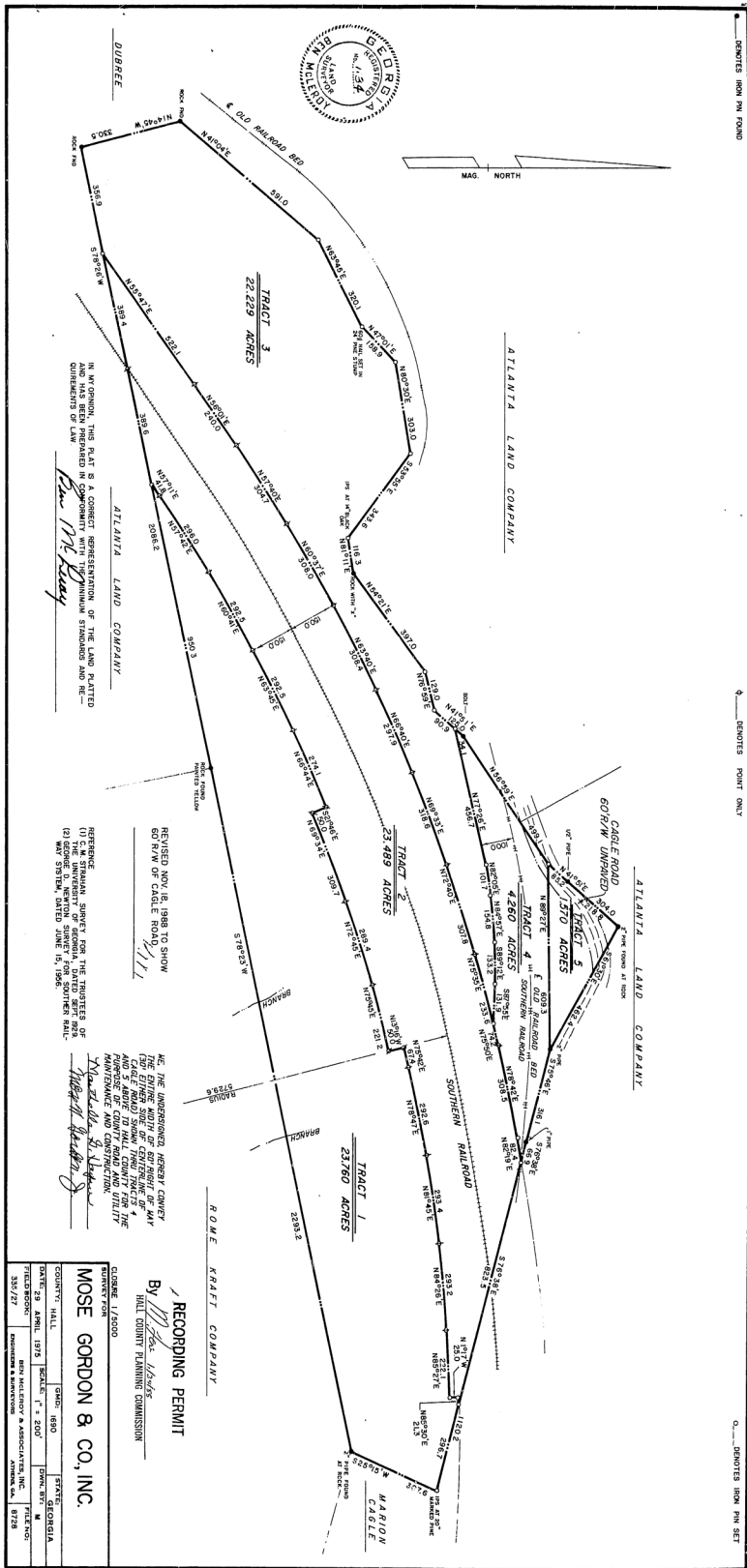


Recorded November 29, 1988

Dwight S. WOOD, Clerk



By *[Signature]*  
 RECORDING PERMIT  
 HALL COUNTY PLANNING COMMISSION

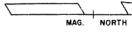
MOSE GORDON & CO., INC.  
 17500  
 COUNTY HALL  
 HALL COUNTY, GEORGIA

DATE: 22 APRIL 1979  
 SCALE: 1" = 200'  
 DRAWN BY: M. TUCKER  
 CHECKED BY: J. H. HARRIS  
 APPROVED BY: J. H. HARRIS

ATLANTA LAND COMPANY  
 IN WITNESS WHEREOF, THIS PLAT IS A CORRECT REPRESENTATION OF THE LAND PLATTED AND HAS BEEN PREPARED IN ACCORDANCE WITH THE MINIMUM STANDARDS AND REQUIREMENTS OF LAW  
*[Signature]*  
 ROME, GA.

REVISED NOV. 16, 1988 TO SHOW  
 60 FT W. RIGHT OF WAY  
 10 FT E. RIGHT OF WAY  
 REVERSE  
 (1) C. M. STRAIN, SURVEY FOR THE TRUSTEES OF  
 (2) GEORGE S. NORTON, SURVEY FOR SOUTHERN RAIL  
 WAY SYSTEM, DATED JUNE 15, 1906  
*[Signature]*

ROME KRAFT COMPANY



CONJECTURES FROM THIS PLAT

CONJECTURES FROM OTHER PLATS

CONJECTURES FROM THIS PLAT