



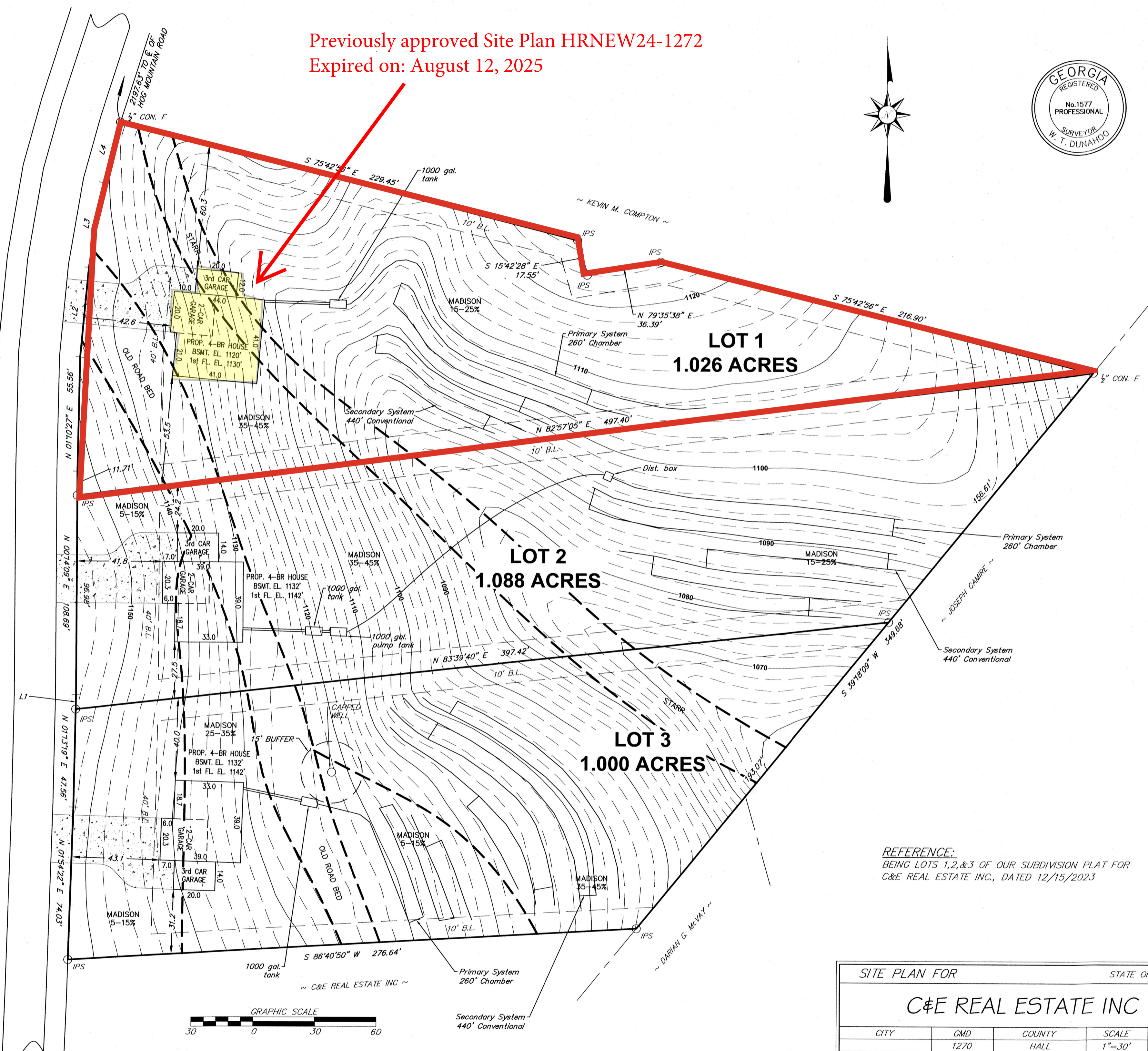
Previously approved Site Plan HRNEW24-1272  
 Expired on: August 12, 2025



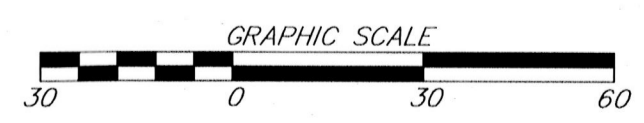
THIS BLOCK IS RESERVED FOR  
 THE CLERK OF SUPERIOR COURT

LINE TABLE		
L	DIST.	BEARING
L1	7.05	N 01°13'18" E
L2	43.92	N 05°24'48" E
L3	41.84	N 09°41'01" E
L4	30.38	N 15°37'05" E

OLD ORR ROAD ~ 40' R/W



~ LEGEND ~  
 R/W = RIGHT OF WAY  
 IPS = IRON PIN SET (1/2" OPEN TOP)  
 IPF = IRON PIN FOUND (1/2" REBAR)  
 P.P. = POWER POLE



REFERENCE:  
 BEING LOTS 1,2,&3 OF OUR SUBDIVISION PLAT FOR  
 C&E REAL ESTATE INC., DATED 12/15/2023

SITE PLAN FOR		STATE OF GEORGIA		
<b>C&amp;E REAL ESTATE INC</b>				
CITY	GMD	COUNTY	SCALE	DATE
	1270	HALL	1"=30'	9/4/2024
W. T. DUNAHOO AND ASSOCIATES, L.L.C.				
P.O. BOX 183 302 W. MAY ST.		(770) 867-3911		WINNER, GEORGIA