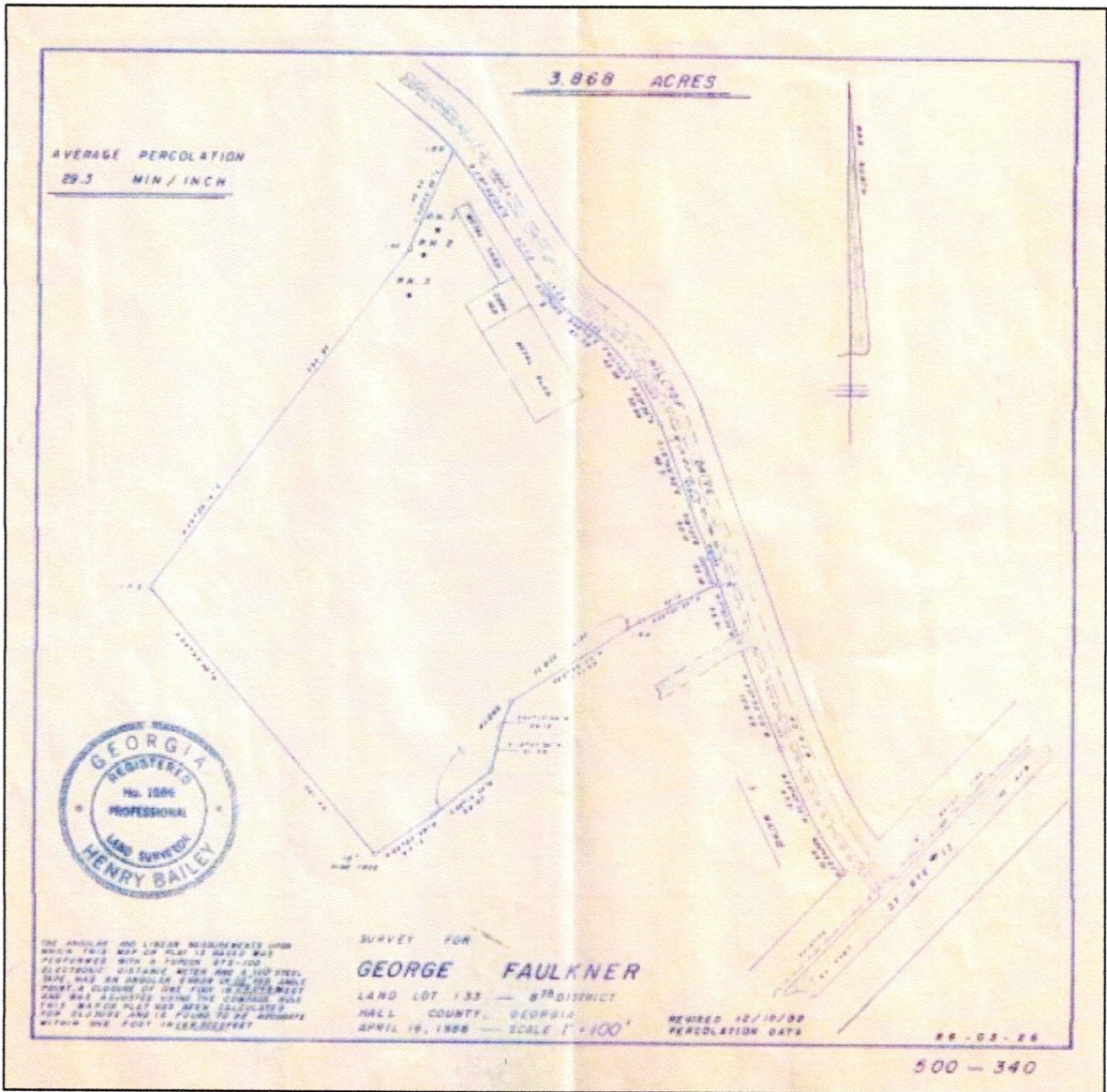


Recorded April 29, 1986 Dwight S. Wood, Clerk



AVERAGE PERCOLATION  
29.3 MIN / INCH

3.868 ACRES



THE ANGULAR AND LINEAR MEASUREMENTS UPON WHICH THIS MAP OR PLAN IS BASED WAS PERFORMED WITH A SUCSON 673-100 ELECTRONIC DISTANCE METER AND A 100' LEVELING STAFF. AN ANGLE OF 180° WAS USED TO POINT A COURSE OF ONE FOOT IN LENGTH AND WAS ADJUSTED USING THE VERNIER AND THIS METHOD HAS BEEN CALIBRATED FOR CLONDS AND IS FOUND TO BE ACCURATE WITHIN ONE FOOT IN 100,000 FEET.

SURVEY FOR  
**GEORGE FAULKNER**  
LAND LOT 133 — 8<sup>TH</sup> DISTRICT  
HALL COUNTY, GEORGIA  
APRIL 16, 1988 — SCALE 1" = 100'

REQUIRED 12/18/98  
PERCOLATION DATA

500-340