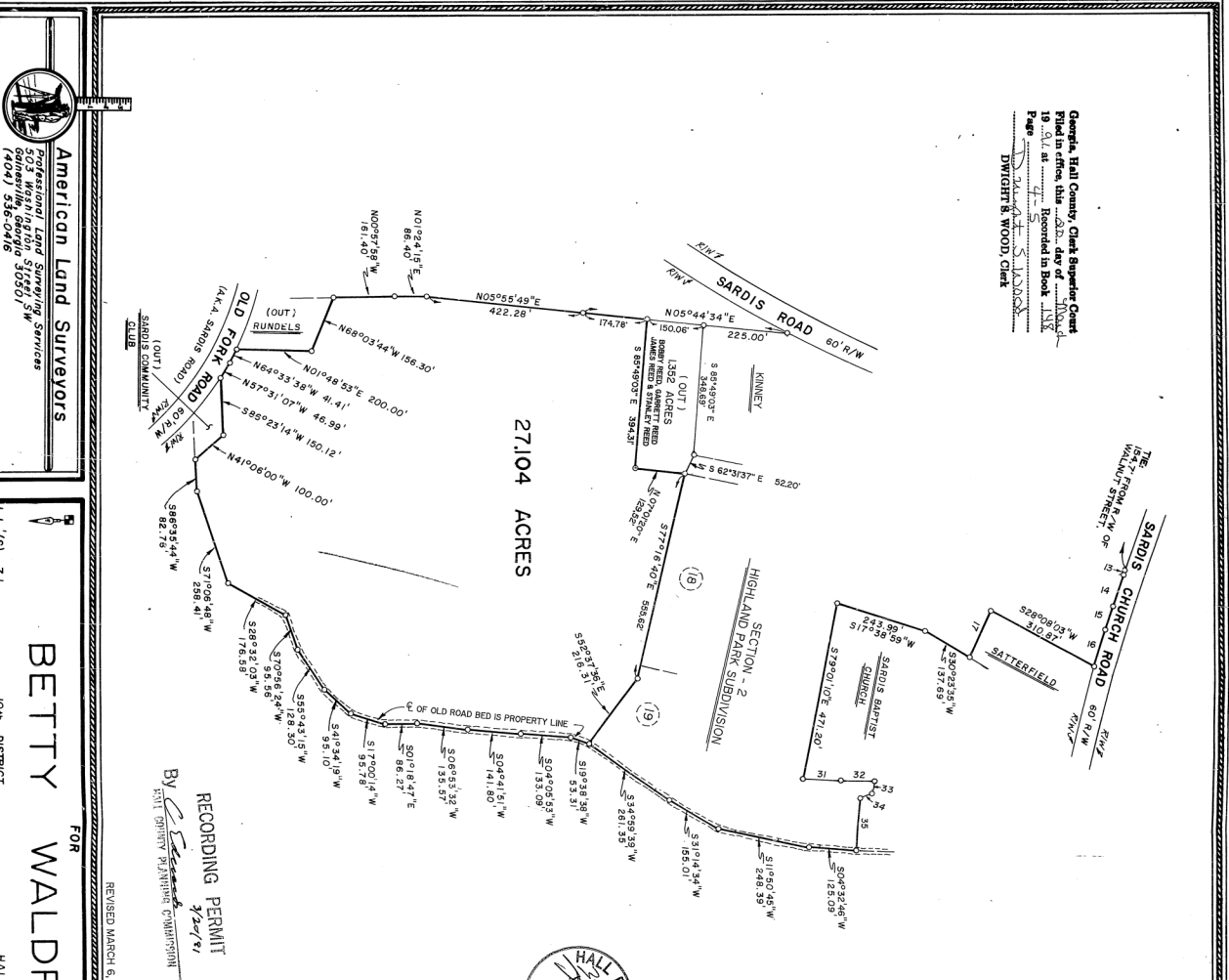


Georgia Hall County, Clerk Superior Court
 Filed in office, this ... day of ...
 19... A.D. at ... Recorded in Book ...
 Page ...
 S. WOOD, Clerk



COURSE	BEARING	DIST.	ARC	RADIUS
1				
2				
3				
4				
5				
6				
7				
8				
9				
10				
11				
12				
13				
14				
15				
16				
17				
18				
19				
20				
21				
22				
23				
24				
25				
26				
27				
28				
29				
30				
31				
32				
33				
34				
35				
36				
37				
38				
39				
40				
41				
42				
43				
44				
45				
46				
47				
48				
49				
50				

American Land Surveyors
 Professional Land Surveying Services
 503 Washington Street, SW
 Atlanta, Georgia 30301
 (404) 526-0416

L.L.(S) - 71
 BETTY WALDRIP
 FOR
 10th DISTRICT
 HALL COUNTY, GEORGIA

COMPILED PLAT
 GRAPHIC SCALE: 1" = 200'
 DATE: MARCH 9, 1989
 FILE NO. 89012-1

NOTE:
 THIS PROPERTY IS NOT LOCATED WITHIN A FLOOD HAZARD AREA. (SEE FLOOD HAZARD MAP, 130465 0003A, JUNE 25, 1978.)

NOTE:
 This plat has been rechecked for closure precision and was found to be accurate within one foot in 1/100,000 feet.

LEGEND:
 I.P.S. = IRON PIN SETTING
 C.M. = CENTER LINE
 B.L. = BUILDING LINE
 E.S.M. = EMBROIDERED STAKE MARKER
 T.P. = TELEPHONE POLE
 W. = WATER LINE
 S.E.M. = SEWER MAIN LINE
 F.D.L. = FENCE DRAIN LINE
 L.L. = LAND LOT LINE
 M. = MANHOLE

NOTE:
 The field data upon which this plat or map is based was obtained by one foot in 1/100,000 feet and on an angular error of 1" per angle. The plat is not a true and correct plat. Equipment used for this equipment, including a total station, is a Leica T.D.M. (TOTAL STATION).

