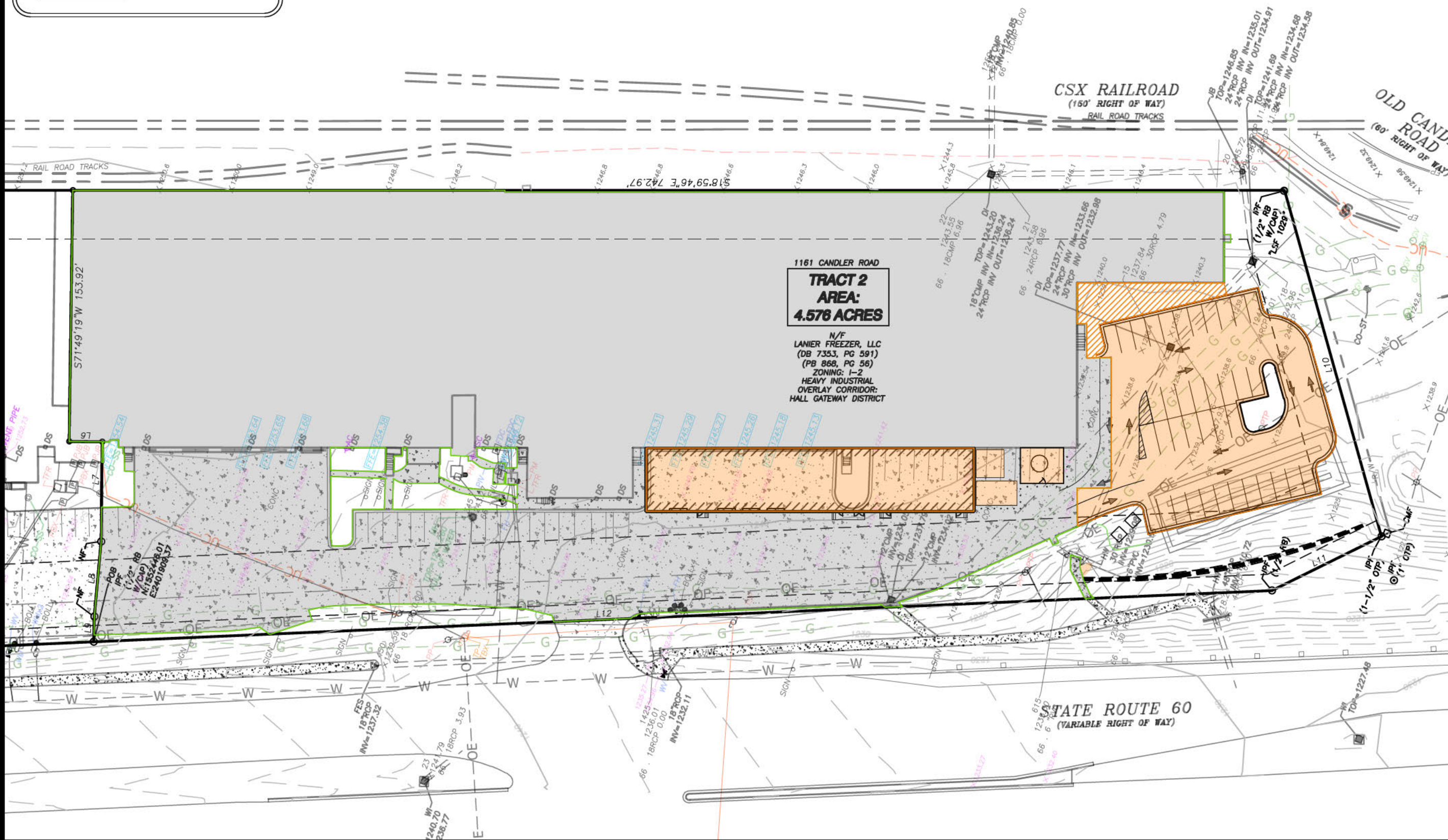






**LEGEND**

- IMPERVIOUS AREA (EXISTING)  
149,182 SF = 3.42 ACRES
- IMPERVIOUS AREA (PROPOSED)  
25,176 SF = 0.58 ACRES
- GRAVEL AREA (PROPOSED)  
1,820 SF = 0.04 ACRES



PROPOSED CONDITIONS IMPERVIOUS EXHIBIT FOR :

**GC 20 - FULLY COOKED LINE 22  
1161 CANDLER ROAD  
GAINESVILLE, GA 30507**

SHEET	OF
<b>2</b>	<b>2</b>

DATE: 4.22.2026  
SCALE: 1" = 60'  
JOB#: G226023.CDC  
FILE#: .SITE  
DRAWN BY: MDS



**DCCM Infrastructure, Inc.**  
425 Oak Street NW, Gainesville, GA 30501  
770.718.0600 | DCCM.com