

Course	Bearing	Distance
L1	Rad: 2448.54 Tan: 122.90	Ar: 245.60 Ch: 645.06
L2	Chd: S 2714.29° E Rad: 2494.24 Tan: 119.54	Ar: 245.50 Ar: 238.90 Ch: 529.18
L3	Chd: S 3109.58° E Rad: 1594.69 Tan: 49.28	Ar: 148.25 Ar: 98.48 Ch: 332.18
L4	Rad: 1594.69 Tan: 49.28	Ar: 98.48 Ch: 332.18
L5	S 3431.94° E	Ar: 98.48
L6	S 1152.00° W	Ar: 98.33
L7	S 4257.00° W	Ar: 98.27
L8	S 4608.00° W	Ar: 42.89
L9	S 1624.00° W	Ar: 53.86
L10	S 4535.35° E	Ar: 12.81

Proposed Water Detention Pond.
ENGINEERING DRAWINGS TO BE
SUBMITTED PRIOR TO START OF
PROJECT DEVELOPMENT

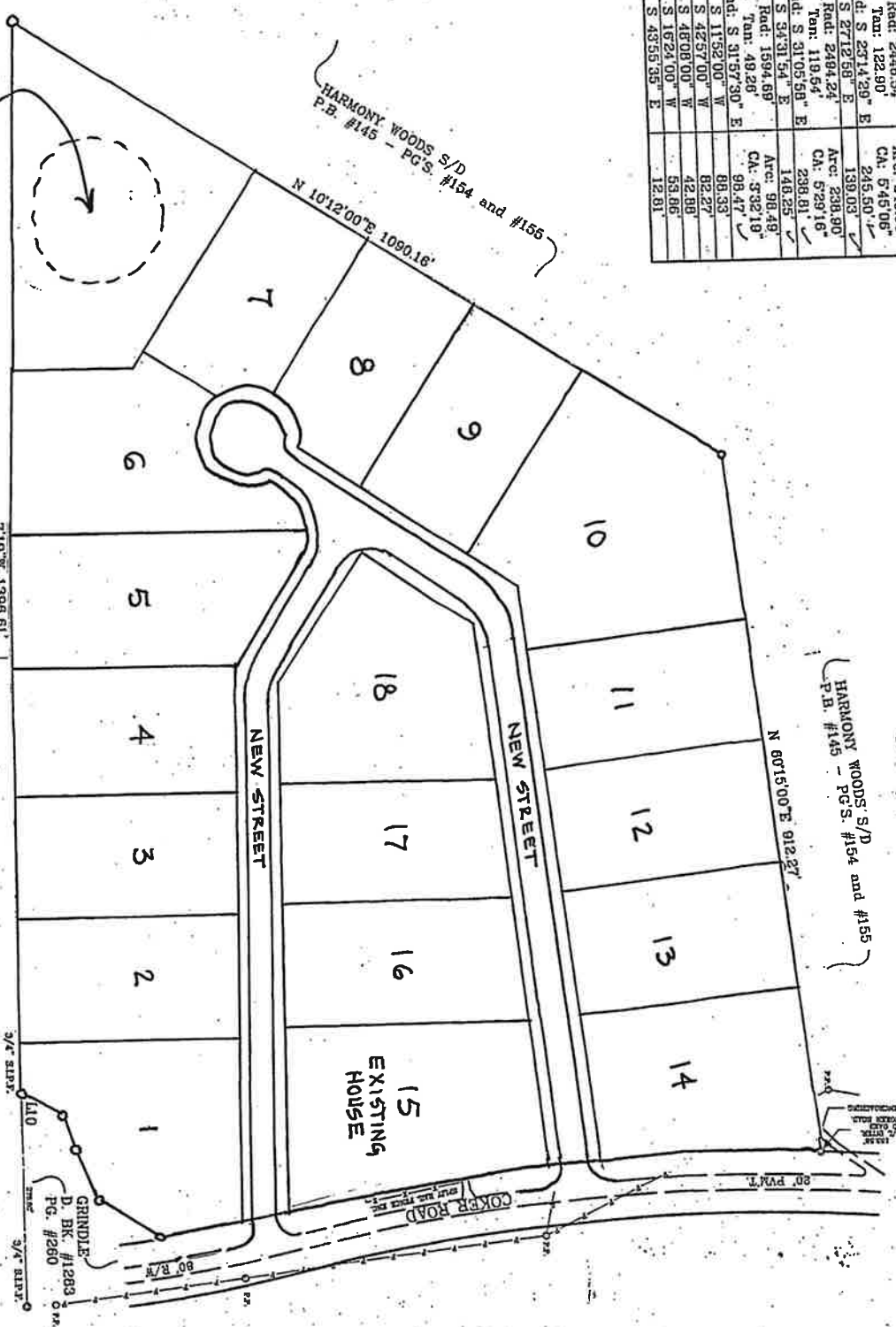
- REFERENCES:
- D. BK. #327 - PG. #545
 - D. BK. #690 - PG. #496
 - D. BK. #3030 - PGS. #153 and #154
 - D. BK. #3030 - PGS. #173 and #174
 - F. BK. #159 - PG. #133
 - F. BK. #143 - PGS. #154 and #155

ER IMGENE BERRY GARNER
K #1647 - PG. #329

MIN. LOT SIZE ONE ACRE
MIN. STREET FRONTAGE 50 FEET



ERRAIN CARRILLO
TADMORE G.M.D. #268
HALL COUNTY, GEORGIA
FEB 28, 2012 - SCALE 1" = 100'



LEGEND

A.P.	ANCE FROM PERIOD
B.C.	BACK OF CURB OR TRUCK
B.L.	BUILDING EXISTENCE LINE
C.B.	CURB
C.C.	CONCRETE CURB
C.M.	CONCRETE MOUND
C.P.	CONCRETE PIPE
C.P.P.	CONCRETE PIPE
C.P.F.	CONCRETE PIPE
C.P.T.	CONCRETE PIPE
C.P.V.	CONCRETE PIPE
D.L.	DRAIN LINE
D.M.	DRAIN MANHOLE
E.L.	EXISTING LINE
E.M.	EXISTING MANHOLE
F.L.	FEED LINE
F.M.	FEED MANHOLE
G.M.	GEORGIA METAL DISTRICT
H.C.	HALL COUNTY
H.P.	HALL COUNTY
H.P.B.	HALL COUNTY
H.P.C.	HALL COUNTY
H.P.D.	HALL COUNTY
H.P.E.	HALL COUNTY
H.P.F.	HALL COUNTY
H.P.G.	HALL COUNTY
H.P.H.	HALL COUNTY
H.P.I.	HALL COUNTY
H.P.J.	HALL COUNTY
H.P.K.	HALL COUNTY
H.P.L.	HALL COUNTY
H.P.M.	HALL COUNTY
H.P.N.	HALL COUNTY
H.P.O.	HALL COUNTY
H.P.P.	HALL COUNTY
H.P.Q.	HALL COUNTY
H.P.R.	HALL COUNTY
H.P.S.	HALL COUNTY
H.P.T.	HALL COUNTY
H.P.U.	HALL COUNTY
H.P.V.	HALL COUNTY
H.P.W.	HALL COUNTY
H.P.X.	HALL COUNTY
H.P.Y.	HALL COUNTY
H.P.Z.	HALL COUNTY
H.P.	HALL COUNTY