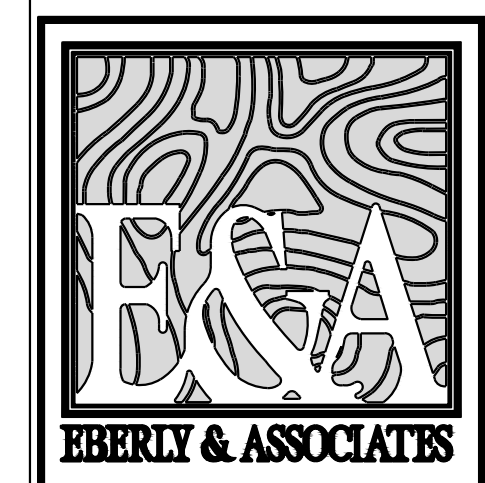


SIGNAL PLAN NOTES

SEE SIGNAL PLANS FOR ALL POLE LOCATIONS, DETECTION ZONES, AND SIGNAL HEADS

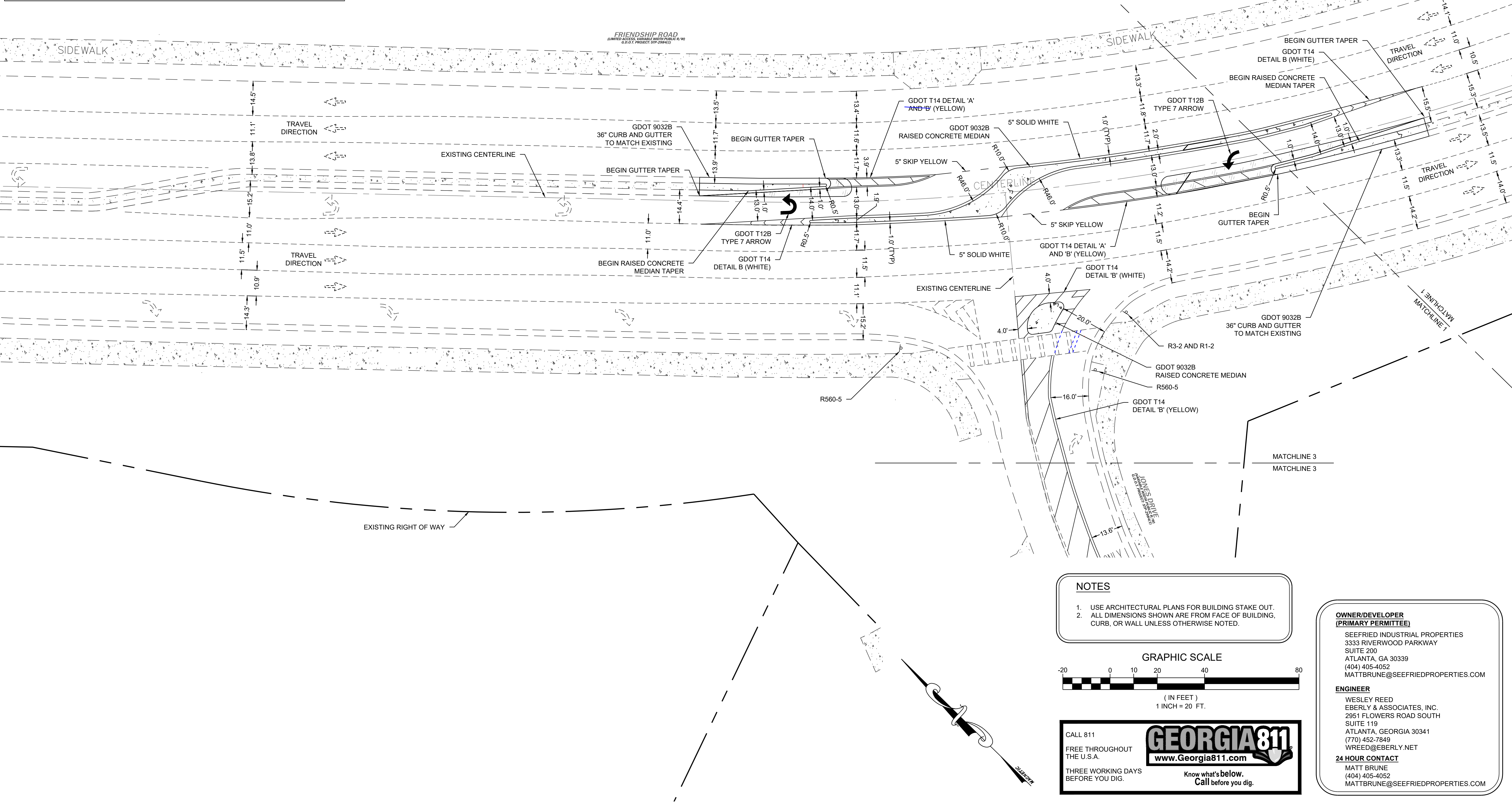
PAVING LEGEND

	CONCRETE PAVING
	L.D. ASPHALT
	H.D. ASPHALT
	CONCRETE SW
	GDOT PAVEMENT PAVING DETAIL



TEL: 770.452.7849 FAX: 770.452.0086
2951 FLOWERS RD S, STE 119
ATLANTA, GEORGIA 30341
WWW.EBERLY.NET

- LAND PLANNING
- CIVIL ENGINEERING
- LANDSCAPE ARCHITECTURE



PROJECT:
FRIENDSHIP BUSINESS PARK

LAND LOT 153 8TH DISTRICT
HALL COUNTY, GEORGIA
FRIENDSHIP ROAD

REVISIONS:

NO.	DATE	DESCRIPTION

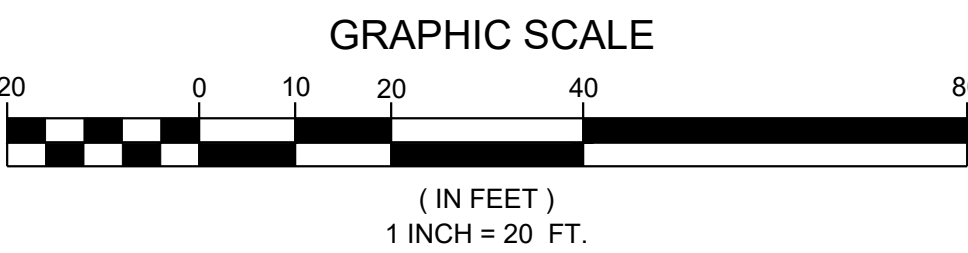
LAYOUT AND STAKING PLAN

SCALE:	1" = 20'
DATE:	7/26/2021
DRAWN BY:	T. RAPP
PROJECT MANAGER:	W. REED, PE
QA/QC CHECK:	

PROJECT NO.
21-023

SHEET NO.
G3.1
ISSUED FOR CONSTRUCTION

- NOTES**
- USE ARCHITECTURAL PLANS FOR BUILDING STAKE OUT.
 - ALL DIMENSIONS SHOWN ARE FROM FACE OF BUILDING, CURB, OR WALL UNLESS OTHERWISE NOTED.



CALL 811
FREE THROUGHOUT THE U.S.A.
THREE WORKING DAYS BEFORE YOU DIG.

GEORGIA811
www.Georgia811.com

Know what's below.
Call before you dig.

OWNER/DEVELOPER (PRIMARY PERMITTEE)
SEEFRIED INDUSTRIAL PROPERTIES
3333 RIVERWOOD PARKWAY
SUITE 200
ATLANTA, GA 30339
(404) 405-4052
MATTBRUNE@SEEFRIEDPROPERTIES.COM

ENGINEER
WESLEY REED
EBERLY & ASSOCIATES, INC.
2951 FLOWERS ROAD SOUTH
SUITE 119
ATLANTA, GEORGIA 30341
(770) 452-7849
WREED@EBERLY.NET

24 HOUR CONTACT
MATT BRUNE
(404) 405-4052
MATTBRUNE@SEEFRIEDPROPERTIES.COM