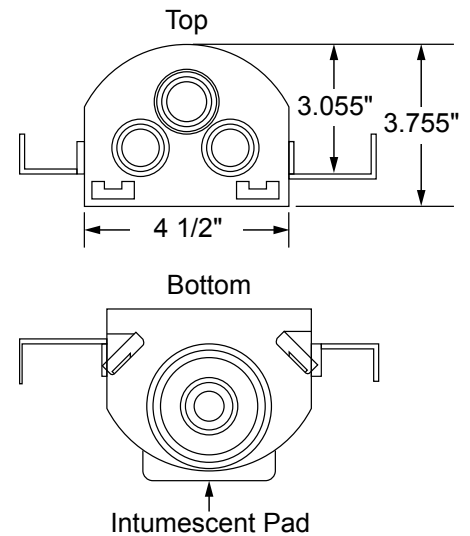
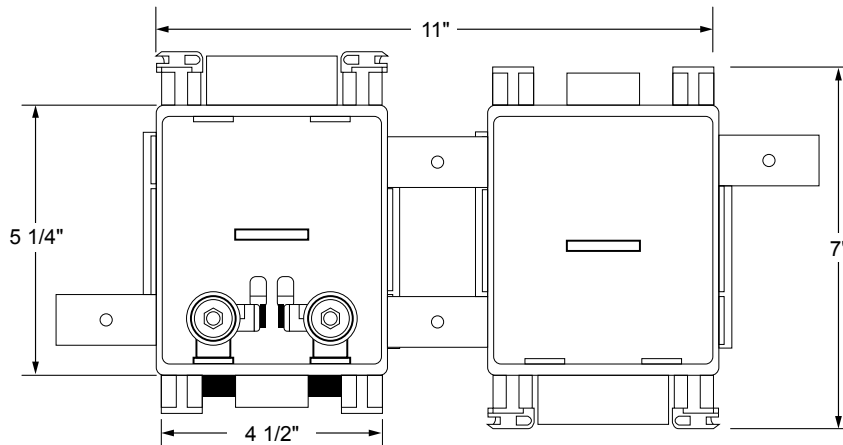


WATER TITE
IPS CORPORATION

FR MultiBox™ Angle Stop Outlet Box System with Quarter Turn Valves



Specifications:

Furnish and install fire-rated MultiBox Angle Stop Outlet Box. Unit shall be Water-Tite product code checked below, as manufactured by IPS Corporation.

Box/Frame Material:

PVC & Intumescent Pad attached

Valves:

Lead free Qtr. Turn Valve with 3/8" Compression Outlet available for Sweat, CPVC, PEX or Wirsbo connection as checked below. Valve complies with ASME A112.18.1/CSA B125.1-05, NSF61-NSF/ANSI 372, and meets California No Lead Plumbing Law.

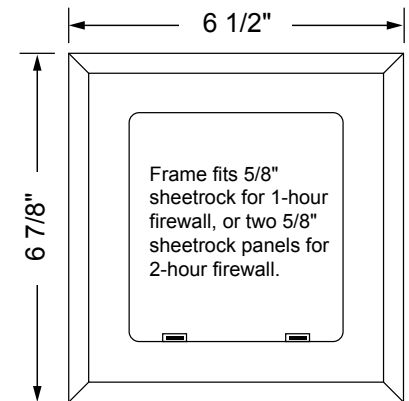
Certifications:

Box

Box has been certified with the following ratings: ASTM E814, 1 Hr (F), 41 Min (T) and 2 Hr (F), 101 Min (T) CAN/ULC-S115-1 Hr (F/FH), 41 Min (FT/FTH) and 2 Hr (F/FH), 101 Min (FT/FTH)



Valves



Available Accessories:

3 Universal Faceplates: Open, Solid and Louvered; Stabilizer Bar

Product Code #	Model #	Product Description	Quantity
83092	FRAS1200	FR Angle Stop, Qtr-turn Valves, 3/8" Sweat Connection	10
83093	FRAS1201	FR Angle Stop, Qtr-turn Valves, 3/8" CPVC Connection	10
83094	FRAS1202	FR Angle Stop, Qtr-turn Valves, 3/8" PEX Connection	10
83095	FRAS1211	FR Angle Stop, Qtr-turn Valves, 3/8" Wirsbo Connection	10

IPS
CORPORATION

500 Distribution Parkway, Collierville, TN 38017 • Phone: 800-888-8312 • Fax: 901-853-5008 • www.ipscorp.com