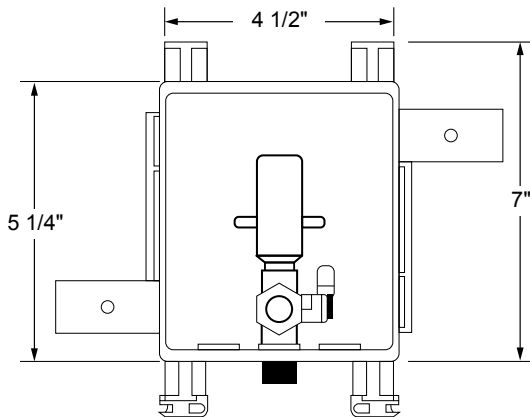




FR MultiBox™ Dishwasher/Commercial Ice Maker Outlet Box System with Quarter Turn Arrestor Valve



Specifications: Furnish and install fire-rated MultiBox Ice Maker Outlet Box. Unit shall be Water-Tite product code checked below, as manufactured by IPS Corporation.

Box Material: PVC & Intumescent Pad attached

Valve: Lead free Qtr. Turn Valve with 3/8" Compression Outlet available for Sweat, CPVC, PEX or Wirsbo connection as checked below. Valve complies with ASME A112.18.1/CSA B125.1-05, NSF61-NSF/ANSI 372, and meets California No Lead Plumbing Law. Arrestor complies with ASSE 1010

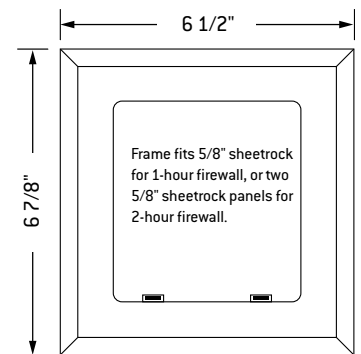
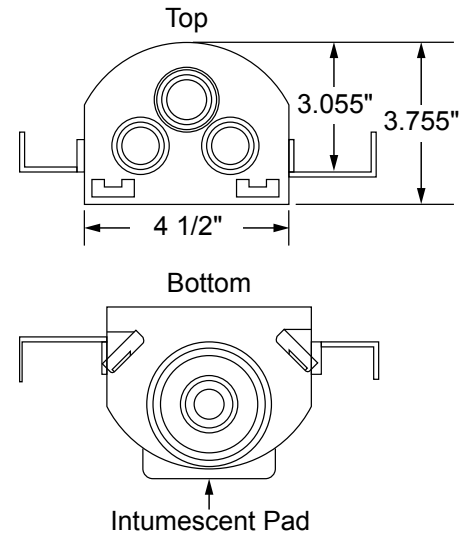
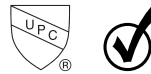
Available Accessories: 3 Universal Faceplates: Open, Solid and Louvered; Stabilizer Bar

Certifications: Box

Boxes have been certified with the following ratings: ASTM E814, 1 Hr (F), 41 Min (T) and 2 Hr (F), 101 Min (T) CAN/ULC-S115-1 Hr (F/FH), 41 Min (FT/FTH) and 2 Hr (F/



Valves



Item #	Model #	Product Description	Quantity
83096	FRDW1200HA	FR Dishwasher OB, Qtr-turn Arrestor Valve, 3/8" Comp. Outlet, 1/2" Sweat Conx	10
83097	FRDW1201HA	FR Dishwasher OB, Qtr-turn Arrestor Valve, 3/8" Comp. Outlet, 1/2" CPVC Connection	10
83098	FRDW1202HA	FR Dishwasher OB, Qtr-turn Arrestor Valve, 3/8" Comp. Outlet, 1/2" PEX Connection	10
83099	FRDW1211HA	FR Dishwasher OB, Qtr-turn Arrestor Valve, 3/8" Comp. Outlet, 1/2" Wirsbo Connection	10