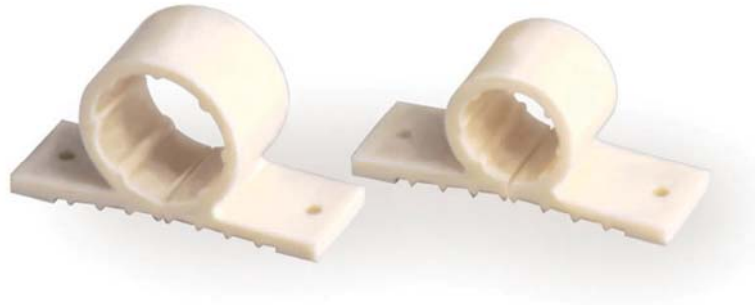




**TWO-HOLE PIPE CLAMP**

**Specifications:**

Furnish and install Water-Tite Two Hole Pipe Clamp through a stud or hanging below a ceiling or basement floor joist. Plastic pipe insulators reduce noise from tubing expansion and contraction. Supports copper, PEX, polybutylene and ideally isolates CPVC tubing from wood. Impact resistant to 0°F (-18°C) Max Temp: 160°F (71°C) continuous. Unit shall be Water-Tite product code as checked below, manufactured by IPS Corporation.



✓	Product Code	Product Description	Model	UNITS/CASE
	83003	Supports 1/2" CTS (100/Bag)	C612	2000
	83008	Supports 3/4" CTS (100/Bag)	C634	1000
	83010	Supports 1" CTS (50/Bag)	C601	500
	83012	Supports 1 1/4" CTS (50/Bag)	C614	250
	83013	Supports 1 1/2" CTS (25/Bag)	C615	250
	83014	Supports 2" CTS (25/Bag)	C620	250
<b>DISPLAY PACKS</b>				
	83000	Supports 1/2" CTS (5/Bag)	RC612C	10
	83005	Supports 3/4" CTS (5/Bag)	RC634C	10

