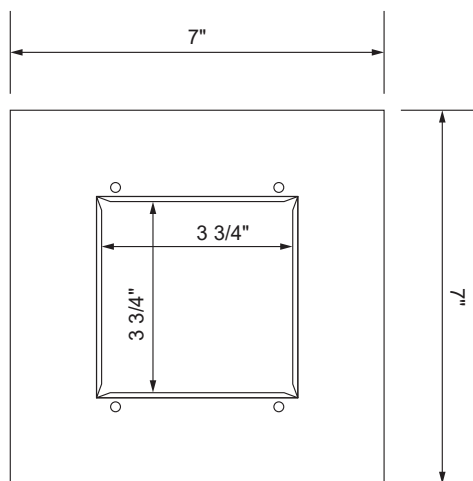
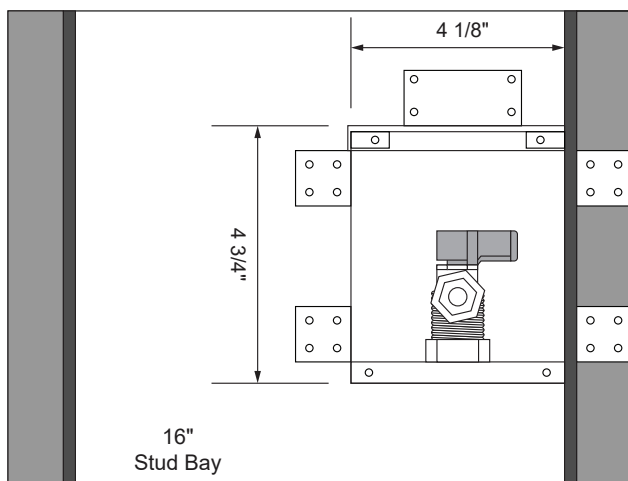


Mini Stainless Steel IMOB, Lead Free Qtr-turn Arrester Valve, 1/2" Sweat Connection



Ice Maker Box Installation Instructions

- 1) Remove the faceplate that is attached to the ice maker box and save for future installation.
- 2) Using either nails or screws, mount the box to the stud via the flanges on the side of the box.
- 3) Box can be mounted:
 - a) On either side of the stud bay.
 - b) At a height determined by builder/installer.
 - c) In any direction - top mount, etc.
- 4) Connect the copper water supply tubing to the ice maker box valve via sweat/solder connection.
- 5) Check all local codes for appropriate approvals and requirements.
- 6) To the 1/4" outlet of valve attach either:
 - a) Copper supply tubing via compression connection.
 - b) Poly supply tubing via compression connection - brass insert into poly tube is required
 - c) Braided hose via threaded connection.
- 7) Connect to the inlet connection of the refrigerator.

Part #	Replacement Component Description	Qty
88366	Lead Free Quarter Turn Sweat Ice Maker Valve w/HA	1
89917	Locknut for Solder Valve	1
90193	Valve Spacer	1

Part #	Replacement Component Description	Qty
97151	Faceplate	1
90159	Faceplate Screws (4-pack)	1

Item #	Replacement Component Description	Model #	Case Qty	Packaging
88525	Mini Stainless Steel IMOB, Lead Free Qtr-turn Arrester Valve, 1/2" Sweat Connection	SSMIB6AB	5	Standard Pack