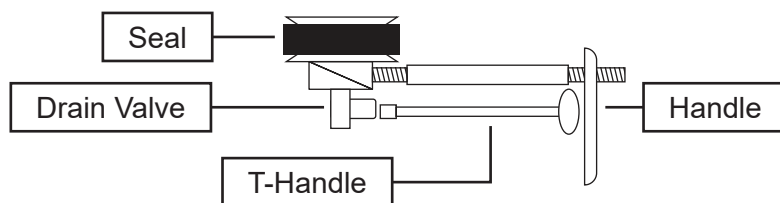


The Mechanical Cleanout Plug is designed to be used in standard cleanout fittings in plumbing systems. The purpose of the plug is to hold test media (either water or air) in the system being tested. Specifications for the Mechanical Cleanout Plug:

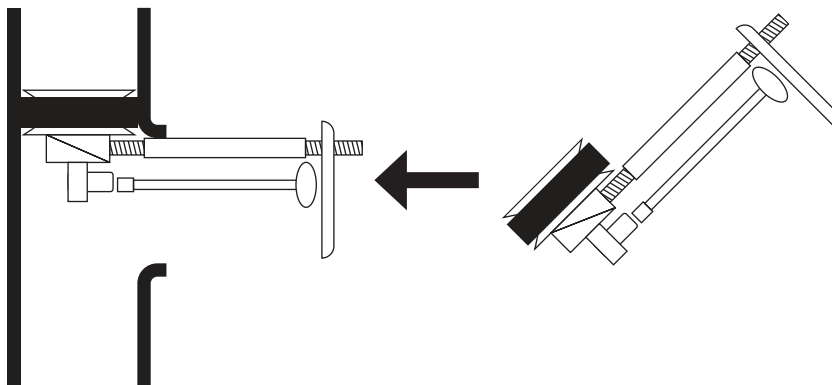
Product Code	Cleanout Size	Minimum Pipe I.D.	Maximum Pipe I.D.	Maximum Water Head	Maximum Air Pressure
83659	6"	5.90	6.25"	30 feet	13 psig
83660	6" C.I.	5.60	6.25"	30 feet	13 psig

**Installation Instructions:**

1. Select the proper Mechanical Cleanout Plug for the cleanout it is to be used in (Plastic/Cast Iron).
2. Make sure the Mechanical Cleanout Plug is clean and functioning properly.
3. Orient the drain valve to that the stem is facing out.
4. Turn handle CCW to loosen and push forward against tube.



5. Turn the Mechanical Cleanout Plug 45 degrees and while inserting it into the cleanout fitting rotate the seal up into the fitting with handle against top of cleanout opening.
6. Tighten the handle CW until it is secured in pipe tightly.



7. Once the plumbing system test is completed open valve using the T-Handle. NEVER PLACE HANDS INSIDE THE CLEANOUT.
8. Allow the test media to completely release, then unscrew handle and push in against tube.
9. Remove the Mechanical Cleanout Plug by rotating it up and out of the cleanout fitting.

500 Distribution way • Collierville, TN 38017 U.S.A.  
Phone: 901-853-5001 • 800-888-8312 • Fax 901-583-5008