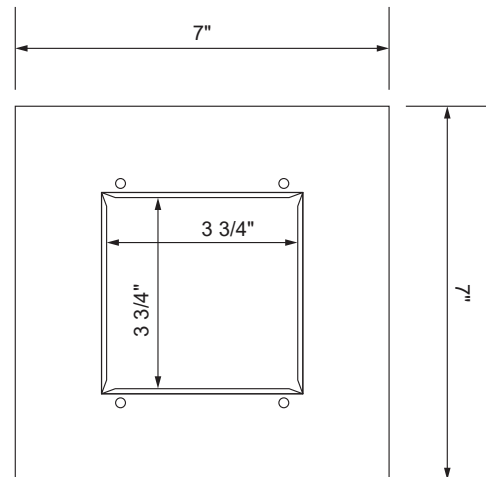
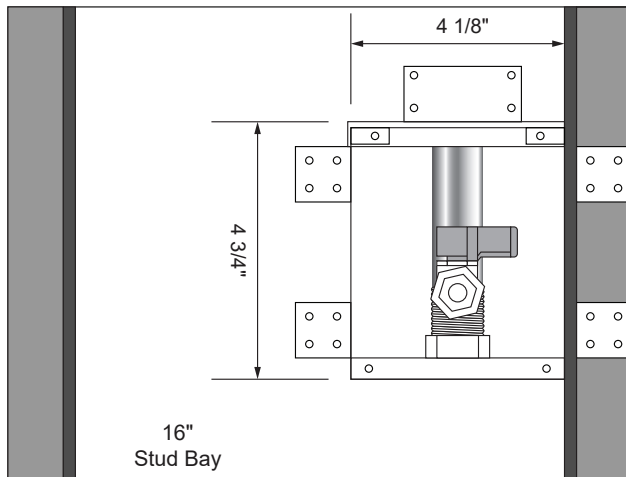




White Powder Coated Ice Maker Outlet Box With Lead Free Hammer Arrestor Valves



Specifications:

Furnish and install recessed, white powder-coated ice maker outlet box with a brass quarter turn hammer arrestor valve. Unit shall be Guy Gray™ product code checked below as manufactured by IPS Corporation.

Box Material:

The box and faceplate are 20 gauge white powder-coated cold rolled steel.

Valve Options:

The brass quarter turn valves shall comply with NSF61, NSF/ANSI 372, and ASME A112.18.1/CSA B125.1 and shall feature white handle and check-mark logo for easy Lead-Free identification. Hammer arrestor shall comply with ASSE 1010.

Item #	Product Description	Model #	Units/Case
88531	Qtr-turn Arrestor Valve, 1/2" Sweat Conx.	MIB1HAAB	5
88533	Qtr-turn Arrestor Valve, 1/2" CPVC Conx.	MIB2HAAB	5
88513	Qtr-turn Arrestor Valve, 1/2" F1807 Conx	MIB3HAAB	5
88515	Qtr-turn Arrestor Valve, 1/2" F1960 Conx.	MIB4HAAB	5
90254	Replacement Faceplate Metal IMOB (7" x 7") 20 Ga. Steel	7063	1



500 Distribution Parkway, Collierville, TN 38017 • Phone: 800-888-8312 • Fax: 901-853-5008 • www.ipscorp.com