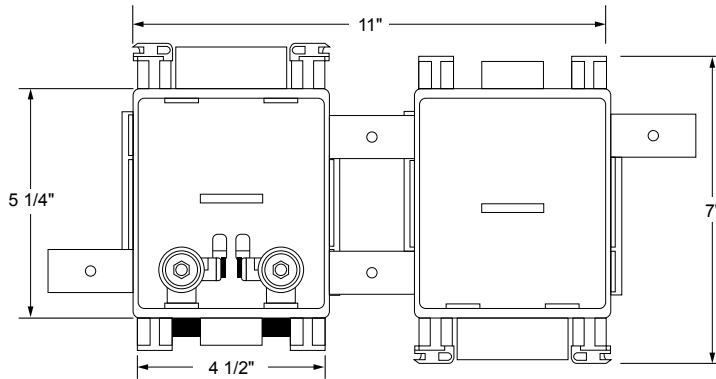




## FR MultiBox™ Two-Box Washing Machine Outlet Box System with Quarter Turn Valves



**Specifications:** Furnish and install fire-rated MultiBox Two-Box Washing Machine Outlet Box System. Boxes may be inter-connected or installed separately. Valve box includes DWV drain to capture hose leaks, while the drain box contains 2" drain with integrated knock-out for DWV testing. Unit shall be Water-Tite product code checked below, as manufactured by IPS Corporation.

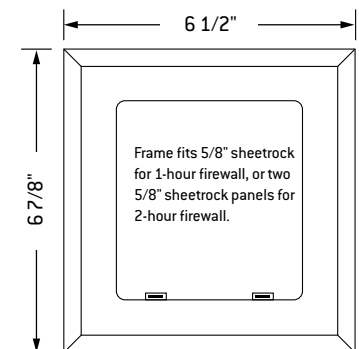
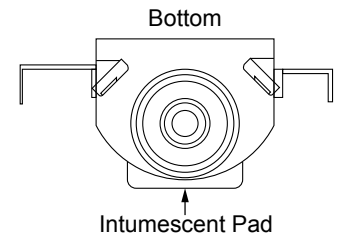
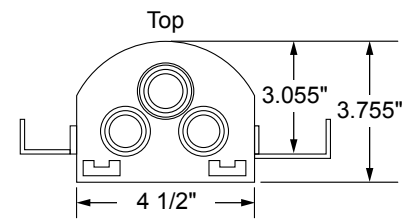
**Box/Frame Material:** PVC & Intumescent Pad attached

**Valves:** Qtr. Turn Valves with Sweat, CPVC, PEX, Wirsbo or REHAU EVERLOC+™ connection as checked below. Valves comply with ASME A112.18.1/CSA B125.1-05

**Box Certifications:** Boxes have been certified with the following ratings: ASTM E814, 1 Hr (F), 41 Min (T) and 2 Hr (F), 101 Min (T) CAN/ULC-S115-1 Hr (F/FH), 41 Min (FT/FTH) and 2 Hr (F/FH), 101 Min (FT/FTH)



**Valve Certifications:**



PRODUCT	DESCRIPTION	MODEL	UNITS/CASE
<b>Standard Packs</b>			
83052	FR Two Box WMOB System, Qtr-turn Valves, 1/2" Sweat Conx.	MBFR1200	10
83053	FR Two Box WMOB System, Qtr-turn Valves, 1/2" CPVC Conx.	MBFR1201	10
83054	FR Two Box WMOB System, Qtr-turn Valves, 1/2" PEX Conx.	MBFR1202	10
83055	FR Two Box WMOB System, Qtr-turn Valves, 1/2" Wirsbo Conx.	MBFR1211	10
83389	FR Two Box WMOB System, Qtr-turn Valves, 1/2" F3347 Conx.	MBFR1222	10
83332	FR Two Box WMOB System, Qtr-turn Valves, REHAU EVERLOC+™ Conx.	MBFR1205	10
<b>Contractor Packs</b>			
83056	FR WMOB, Qtr-turn Valves, 1/2" Sweat Conx.	MBFR1200CP	10
83057	FR WMOB, Qtr-turn Valves, 1/2" CPVC Conx.	MBFR1201CP	10
83058	FR WMOB, Qtr-turn Valves, 1/2" PEX Conx.	MBFR1202CP	10
83059	FR WMOB, Qtr-turn Valves, 1/2" Wirsbo Conx.	MBFR1211CP	10
83333	FR Two Box WMOB System, Qtr-turn Valves, REHAU EVERLOC+™ Conx.	MBFR1205CP	10