

# Now with Press Fit Connections For Water Heater Kits

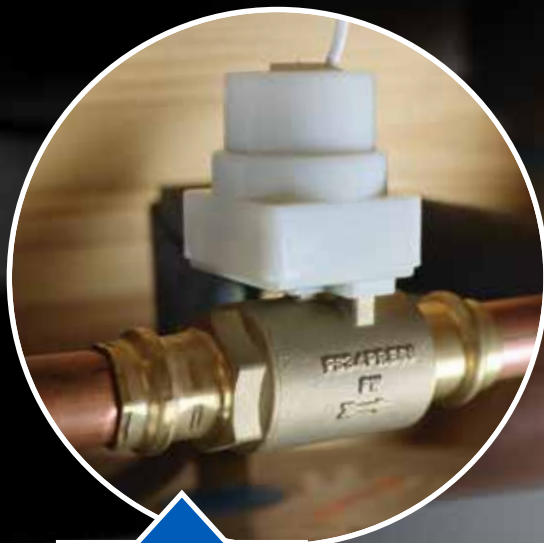
**FloodStop® is a point-of-use leak detection device** that automatically shuts off the water supply to an appliance or fixture the moment a leak is detected. Once water is detected, the motorized ball valves close and sound an alarm. FloodStop is a durable and multi-use device, which limits potentially devastating flood damage, allowing the plumber, builder, and homeowner to have peace-of-mind knowing no flood caused by an appliance or fixture will go unnoticed.

## Stop Flood Damage Before It Ever Starts™

### Includes:

- Motorized Lead-Free, CNC-machined, Full-Port Ball Valve
- Control Unit is powered by the included AC power supply  
Optionally, it may be powered with 4 AA batteries\* (not included)
- Water/Leak Sensor (1.25" x 7.5")
- Includes screws and drywall anchors, plus a hook and loop, self-adhesive mounting pad for multiple mounting options
- Floodstop's pigtail ties into Building Maintenance Systems (BMS) and sends a relay to notify of alarm and valve closure
- Meets Press Standard IAPMO PS 117-2019
- One year warranty

*\*Batteries used in conjunction with the AC power supply provide backup should AC power fail.*



**3/4" Press x Press  
Motorized Ball Valve**



**3/4" Press x MPT  
Motorized Ball Valve**



LISTINGS	PRODUCT	DESCRIPTION	MODEL	UNITS/ CASE
	<b>FloodStop® Water Heater Kits</b>			
	20000	Water Heater Kit, 1/2" NPT MIP x FIP Full Port Motorized Ball Valve	FS12NPT	12
	20001	Water Heater Kit, 3/4" NPT MIP x FIP Full Port Motorized Ball Valve	FS34NPT	12
	20015	<b>NEW</b> Water Heater Kit, 3/4" Press x Press Motorized Ball Valve	FS34PRESS	12
	20016	<b>NEW</b> Water Heater Kit, 3/4" Press x MPT Motorized Ball Valve	FS34PRESSMPT	12
	20002	Water Heater Kit, 3/4" Compression Full Port Motorized Ball Valve	FS34C	12
	20007	Water Heater Kit, 3/4" Push-to-Connect Full Port Motorized Ball Valve	FS34P	12
	20003	Water Heater Kit, 1" NPT MIP x FIP Full Port Motorized Ball Valve	FS1NPT	12
	20004	Water Heater Kit, 1-1/4" NPT MIP x FIP Full Port Motorized Ball Valve	FS125NPT	12
	20005	Water Heater Kit, 1-1/2" NPT MIP x FIP Full Port Motorized Ball Valve	FS150NPT	12
	<b>FloodStop Washing Machine Kits</b>			
	20010	Washing Machine Kit, 90° 3/4" Motorized Ball Valves	FS34H90	12
	20011	Washing Machine Kit, Straight 3/4" Motorized Ball Valves	FS34H	12
	<b>FloodStop Ice Maker, Dish Washer/Toilet, and Sink Kits</b>			
	20020	Ice Maker Kit, 1/4" Motorized Compression Valve	FS14C	12
	20021	Toilet/Dishwasher Kit, 3/8" Motorized Compression Valve	FS38C	12
	20006	Sink Kit, {2} 1/2" NPT MIP x FIP, Full Port Motorized Ball Valves	FS12NPTD	12
	20022	Sink Kit, {2} 3/8" Compression Motorized Compression Valves	FS38CD	12
	<b>FloodStop Accessories</b>			
	<b>FloodStop Controllers</b>			
	20070	Controller for FloodStop Kits with Single Valve	FSACONT1	1
	20071	Controller for FloodStop Kits with Two Valves	FSACONT2	1
	<b>Sensor</b>			
	20072	Extra Sensor to Extra Sensor with 3' Wire	FSAXS01	1
	20079	Sensor Manifold	FSASM01	1
	<b>Wiring Harness to Sensor and Valve(s)</b>			
	20075	Wiring Harness for Single Valve (84" to Sensor / 33" to Valve)	FSAWHS	1
	20076	Wiring Harness for Dual Valve (84" to Sensor / 33" to Valve)	FSAWHD33	1
	20095	Wiring Harness for Dual Valve (84" to Sensor / 72" to Valve)	FSAWHD72	1
	20092	Wiring Harness, Plenum Rated, Single Valve (18' to Sensor / 26' to Valve)	FSASVHARNP25	1
	<b>Wall Adapter</b>			
	20073	Wall Adapter, 9VDC, White, 5-1/2" Wire	FSAWA	1
	20091	9' Wall Adapter Extension Wire	FSAWAE9	1
	<b>Sensor to Sensor Extensions Wires</b>			
	20077	Sensor to Sensor Extension Wire, 10'	FSASEXT10	1
	20078	Sensor to Sensor Extension Wire, 22'	FSASEXT22	1
	<b>Controller to Valve Extension Wire</b>			
	20074	Controller to Valve Extension Wire, 9'	FSACEXT9	1
	<b>Motors</b>			
	20093	Motor 5 Stage Gearbox for 1" diameter and smaller kits	FSAMOTOR5M	1
	20094	Motor 6 Stage Gearbox for 1.25" diameter	FSAMOTOR6M	1
	<b>Wi-Fi Module</b>			
	20052	Wi-Fi Module	FSWIFE	1