



Residential and Commercial Roofing

Product Solutions Catalog



QUALITY INNOVATION PERFORMANCE

IPS Corporation has long been recognized for its commitment to improving residential and commercial construction products. From introducing America's first plastic pipe solvent cement, the first plastic recessed Washing Machine Outlet Box, to the first adjustable multi-size roof vent flashing, IPS Corporation has always sought to help professional contractors work faster and smarter.

IPS leaves nothing to chance by using the highest-quality materials, which are fully tested for ultraviolet, ozone, and weather resistance. With continued devotion to research, product development, and superior service IPS will continue to bring innovative products with unsurpassed service to the roofing market.

IPS Corporation Roofing Products Division Focus:

.....
Creating value for our customers

.....
Product innovation

.....
Superior workmanship

.....
Unsurpassed customer service

.....
Professionalism at all levels

Thank you for choosing IPS Corporation's Roofing Products!





GALVANIZED FLASHINGS

Multi-Size 4N1® Galvanized Steel Base Roof Flashings



81711

- 20 mil galvanized steel base
- 4 sizes in 1 for on-the-job convenience — fits pipes 1-1/4" to 4"
- Can be installed on 12/12 pitch roofs or higher dependent on vent pipe size, see specification sheet
- Large base and nailing flange for extra coverage in freeze-thaw climates
- Flexible PVC collar heat tested to 180°F, conforms to vent pipe creating a water-tight seal
- Tested for ultraviolet, ozone, and weather resistance
- Limited Lifetime Warranty for life of the current roof system

PRODUCT	DESCRIPTION	MODEL	UPC	CASE	PALLET
81711	4N1 12" x 16" Base – Mill Finish	GB41	012181817117	20	720
81890	4N1 12" x 16" Base – Brown	GB41BROWN	012181818909	20	720
81891	4N1 12" x 16" Base – Black	GB41BLACK	012181818916	20	720
81892	4N1 12" x 16" Base – Gray	GB41GRAY	012181818923	20	720
81880	4N1 18" x 18" Base – Mill Finish	GB4118	012181818800	15	360

Multi-Size 3N1® Galvanized Steel Base Roof Flashings



81710

- 20 mil galvanized steel base
- Multi size flashing fits 1-1/4" to 3"
- Can be installed on 12/12 pitch roofs or higher dependent on vent pipe size, see specification sheet
- Flexible PVC collar heat tested to 180°F, conforms to vent pipe creating a water-tight seal
- Tested for ultraviolet, ozone, and weather resistance
- Limited Lifetime Warranty for life of the current roof system

PRODUCT	DESCRIPTION	MODEL	UPC	CASE	PALLET
81710	3N1 10-3/4" x 14-1/2" Base – Mill Finish	GB31	012181817100	20	880
81851	3N1 10-3/4" x 14-1/2" Base – Brown	GB31BROWN	012181818510	20	880
81852	3N1 10-3/4" x 14-1/2" Base – Black	GB31BLACK	012181818527	20	880
81853	3N1 10-3/4" x 14-1/2" Base – Gray	GB31GRAY	012181818534	20	880

Standard Galvanized Steel Base Roof Flashings



81850

- 20 mil galvanized steel base
- Can be installed on 12/12 pitch roofs or higher dependent on vent pipe size, see specification sheet
- Flexible PVC collar heat tested to 180°F, conforms to vent pipe creating a water-tight seal
- Tested for ultraviolet, ozone, and weather resistance
- Limited Lifetime Warranty for life of the current roof system

PRODUCT	DESCRIPTION	MODEL	UPC	CASE	PALLET
81850	8-3/4" x 12-1/2" Base for 1-1/4" or 1-1/2" Vent Pipe	GB1	012181818503	20	1200
81855	8-3/4" x 12-1/2" Base for 2" Vent Pipe	GB2	012181818503	20	1200
81860	10-3/4" x 14-1/2" Base for 3" Vent Pipe	GB3	012181818602	20	880
81865	12" x 16" Base for 4" Vent Pipe	GB4	012181818657	20	720
81870	8-3/4" x 12-1/2" Base for 1/2", -3/4" or 1" Tubing	GB5	012181818701	20	1200

Caution: Ensure any sealant, mastic, or adhesive used is compatible with Flexible PVC, Polypropylene, EPDM, and Silicone. Do not apply any substances on the collar portion of the flashing.

Multi-Size 4N1® Aluminium Base Roof Flashings



- 25 mil aluminum base
- 4 sizes in 1 for on-the-job convenience — fits pipes 1-1/4" to 4"
- Can be installed on 12/12 pitch roofs or higher dependent on vent pipe size, see specification sheet
- Large base and nailing flange for extra coverage in freeze-thaw climates

- Flexible PVC collar heat tested to 180°F, conforms to vent pipe creating a water-tight seal
- Tested for ultraviolet, ozone, and weather resistance
- Limited Lifetime Warranty for life of the current roof system



81716

PRODUCT	DESCRIPTION	MODEL	UPC	CASE	PALLET
81716	4N1 12" x 16" Base – Mill Finish	AB41	012181817162	20	720
81893	4N1 12" x 16" Base – Brown	AB41BROWN	012181818930	20	720
81894	4N1 12" x 16" Base – Black	AB41BLACK	012181818947	20	720
81895	4N1 12" x 16" Base – Gray	AB41GRAY	012181818954	20	720
81934	4N1 18" x 18" Base – Mill Finish	AB4118	012181819340	15	300

Multi-Size 3N1® Aluminium Base Roof Flashings



- 25 mil aluminum base
- Multi size flashing fits 1-1/4" to 3"
- Can be installed on 12/12 pitch roofs or higher dependent on vent pipe size, see specification sheet
- Flexible PVC collar heat tested to 180°F, conforms to vent pipe creating a water-tight seal

- Tested for ultraviolet, ozone, and weather resistance
- Limited Lifetime Warranty for life of the current roof system



81715

PRODUCT	DESCRIPTION	MODEL	UPC	CASE	PALLET
81715	3N1® 10-3/4" x 14-1/2" Base – Mill Finish	AB31	012181817155	20	880
81901	3 N 1® 10-3/4" x 14-1/2" Base – Brown	AB31BROWN	012181819012	20	880
81902	3 N 1® 10-3/4" x 14-1/2" Base – Black	AB31BLACK	012181819029	20	880
81903	3 N 1® 10-3/4" x 14-1/2" Base – Gray	AB31GRAY	012181819036	20	880

Standard Aluminium Base Roof Flashings



- 25 mil aluminum base
- Can be installed on 12/12 pitch roofs or higher dependent on vent pipe size, see specification sheet
- Flexible PVC collar heat tested to 180°F, conforms to vent pipe creating a water-tight seal

- Tested for ultraviolet, ozone, and weather resistance
- Limited Lifetime Warranty for life of the current roof system



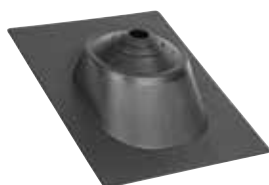
81900

PRODUCT	DESCRIPTION	MODEL	UPC	CASE	PALLET
81900	8-3/4" x 12-1/2" Base for 1-1/4" or 1-1/2" Vent Pipe	AB1	012181819005	20	1200
81905	8-3/4" x 12-1/2" Base for 2" Vent Pipe	AB2	012181819050	20	1200
81910	10-3/4" x 14-1/2" Base for 3" Vent Pipe	AB3	012181819104	20	880
81915	12" x 16" Base for 4" Vent Pipe	AB4	012181819159	20	720

Caution: Ensure any sealant, mastic, or adhesive used is compatible with Flexible PVC, Polypropylene, EPDM, and Silicone. Do not apply any substances on the collar portion of the flashing.

HARD PLASTIC FLASHINGS

Multi-Size 4N1™ Hard Plastic Base Roof Flashings



81709

- Thermoplastic hard base
- 4 sizes in 1 for on-the-job convenience — fits pipes 1-1/4" to 4"
- Can be installed on 12/12 pitch roofs or higher dependent on vent pipe size, see specification sheet
- Larger base for extra coverage (12" x 16")

- Flexible PVC collar heat tested to 180°F, conforms to vent pipe creating a water-tight seal
- Tested for ultraviolet, ozone, and weather resistance
- Limited Lifetime Warranty for life of the current roof system

PRODUCT	DESCRIPTION	MODEL	UPC	CASE	PALLET
81709	4N1 Hardbase Flashing	HB41	012181817094	20	1080

Multi-Size3N1™ Hard Plastic Base Roof Flashings



81700

- Thermoplastic hard base
- Multi-size fits 1-1/4" to 3"
- Can be installed on 12/12 pitch roofs or higher dependent on vent pipe size, see specification sheet
- Flexible PVC collar heat tested to 180°F, conforms to

- vent pipe creating a water-tight seal
- Tested for ultraviolet, ozone, and weather resistance
- Limited Lifetime Warranty for life of the current roof system

PRODUCT	DESCRIPTION	MODEL	UPC	CASE	PALLET
81700	3 N 1® 11-1/8" x 15" Base	HB31	012181817001	20	1200

Standard Hard Plastic Base Roof Flashings



81709

- Thermoplastic hard base
- Can be installed on 12/12 pitch roofs or higher dependent on vent pipe size, see specification sheet
- Flexible PVC collar heat tested to 180°F, conforms to vent pipe creating a water-tight seal

- Tested for ultraviolet, ozone, and weather resistance
- Limited Lifetime Warranty for life of the current roof system

PRODUCT	DESCRIPTION	MODEL	UPC	CASE	PALLET
81750	9-1/4" x 13" Base for 1-1/4" or 1-1/2" Vent Pipe	HB1	012181817506	20	1200
81751	11-1/8" x 15" Base for 1-1/4" or 1-1/2" Vent Pipe	HB1LB	012181817513	20	1200
81755	9-1/4" x 13" Base for 2" Vent Pipe	HB2	012181817551	20	1200
81756	11-1/8" x 15" Base for 2" Vent Pipe	HB2LB	012181817568	20	1200
81760	11-1/8" x 15" Base for 3" Vent Pipe	HB3	012181817568	20	1200
81765	12" x 15-1/2" Base for 4" Vent Pipe	HB4	012181817650	20	900

Caution: Ensure any sealant, mastic, or adhesive used is compatible with Flexible PVC, Polypropylene, EPDM, and Silicone. Do not apply any substances on the collar portion of the flashing.

Multi-Size 3N1 and 3N4 All Flexible Base Roof Flashings



- All flexible, one-piece base and collar
- Can be installed on 12/12 pitch roofs or higher dependent on vent pipe size, see specification sheet
- Flexible PVC heat tested to 180°F, conforms to vent pipe creating a water-tight seal

- Tested for ultraviolet, ozone, and weather resistance
- Limited Lifetime Warranty for life of the current roof system

PRODUCT	DESCRIPTION	MODEL	UPC	CASE	PALLET
81705	3N1® 10" x 13-1/4" Base for 1-1/4", 1-1/2", 2" or 3" Vent Pipe	FB31	012181817056	20	1540
81707	12" x 14-3/4" Base for 3" or 4" Vent Pipe	FB34	0012181817070	20	900



81705

Standard All Flexible Roof Flashings



- All flexible, one-piece base and collar
- Can be installed on 12/12 pitch roofs or higher dependent on vent pipe size, see specification sheet
- Flexible PVC heat tested to 180°F, conforms to vent pipe creating a water-tight seal

- Tested for ultraviolet, ozone, and weather resistance
- Limited Lifetime Warranty for life of the current roof system

PRODUCT	DESCRIPTION	MODEL	UPC	CASE	PALLET
81800	9" x 11 3/8" Base for 1-1/4" or 1-1/2" Vent Pipe	FB1	012181818008	20	1540
81805	9" x 11 3/8" Base for 2" Vent Pipe	FB2	012181818053	20	1540
81810	10" x 13-1/4" Base for 3" Vent Pipe	FB3	012181818107	20	1540
81815	12" x 14-3/4" Base for 4" Vent Pipe	FB4	012181818152	20	900



81800

COPPER FLASHING

Multi-Size 4N1® Copper Base Roof Flashings



- 16 ounce copper base
- 4 sizes in 1 for on-the-job convenience — fits pipes 1 1/4" to 4"
- Can be installed on 12/12 pitch roofs or higher dependent on vent pipe size, see specification sheet
- Large base and nailing flange for extra coverage in freeze-thaw climates

- Flexible PVC collar heat tested to 180°F, conforms to vent pipe creating a water-tight seal
- Tested for ultraviolet, ozone, and weather resistance
- Limited Lifetime Warranty for life of the current roof system

PRODUCT	DESCRIPTION	MODEL	UPC	CASE	PALLET
81942	4N1 12" x 16" Base — Copper	CB41	012181819425	5	225
81885	4N1 12" x 16" Base — Copper, Single Pack	CB41S	012181818855	1	100



81942

Caution: Ensure any sealant, mastic, or adhesive used is compatible with Flexible PVC, Polypropylene, EPDM, and Silicone. Do not apply any substances on the collar portion of the flashing.



Fast, reliable repair for as long as you need it.

The most common cause of roof leaks is caused by a worn gasket around vent pipes that penetrate the surface of the roof. This allows water into the home, potentially causing significant property damage.

The Perma-Boot® vent pipe flashing system was engineered specifically to repair and prevent this type of leak with a patented gasketless design.



Long-Term Leak Protection

Perma-Boot® vent flashing is made of a durable and weather-resistant plastic, engineered to provide permanent protection from costly vent pipe gasket leaks.

Product Features

- Made from a UV stabilized polymer for enhanced durability
- Installs in minutes, no tools required
- Available in black or brown to match a variety of roofing materials
- Suitable for asphalt shingles, wood shake, slate, and composite roofing materials

Repair Models

These options are designed to quickly and easily fit over worn or leaking existing pipe and flashings without having to remove shingles or worn out collar. No tools are required!



82875

PRODUCT	DESCRIPTION	MODEL	UPC	CASE	PALLET
82870	1-1/2" Black Perma-Boot Repair	PBR 312-1.5 Blk	850986003027	24	432
82871	2" Black Perma-Boot Repair	PBR 312-2 Blk	850986003010	24	432
82872	3" Black Perma-Boot Repair	PBR 312-3 Blk	850986003003	24	432
82873	4" Black Perma-Boot Repair 10	PBR 312-4 Blk (10)	012181828731	10	240
82874	4" Black Perma-Boot Repair 20	PBR 312-4 Blk (20)	850986003263	20	360
82875	3N1® Black Perma-Boot Repair	PBR 312-3n1 BK	850986003393	10	240
82876	1-1/2" Brown Perma-Boot Repair	PBR 312-1.5 Brn	850986003041	24	432
82877	2" Brown Perma-Boot Repair	PBR 312-2 Brn	850986003058	24	432
82880	3" Brown Perma-Boot Repair	PBR 312-3 Brn	850986003065	24	432



82885

New Construction Models

These options come with a nailing flange for fastening to the roof deck for roof replacements and new construction applications.

PRODUCT	DESCRIPTION	MODEL	UPC	CASE	PALLET
82881	1-1/2" Black Perma-Boot New Construction	PB 312-1.5 Blk	850986003072	12	192
82882	2" Black Perma-Boot New Construction	PB 312-2 Blk	850986003089	12	192
82883	3" Black Perma-Boot New Construction	PB 312-3 Blk	850986003096	12	192
82884	4" Black Perma-Boot New Construction	PB 312-4 Blk	850986003270	10	160
82885	3N1® Black Perma-Boot New Construction	PB 312-3N1 BK	850986003409	5	100
82886	1-1/2" Brown Perma-Boot New Construction	PB 312-1.5 Brn	850986003102	10	180
82888	2" Brown Perma-Boot New Construction	PB 312-2 Brn	850986003119	10	180
82889	3" Brown Perma-Boot New Construction	PB 312-3 Brn	850986003126	10	180



Multi-Size 3-8 Flashing



81499

- For pipe sizes 3"–8"
- Sleeve flexibility absorbs vibration and pipe movement caused by expansion/contraction
- Made of EPDM which are compounded specifically for maximum resistance to weathering due to ozone and ultraviolet light
- Easy on-site customization with pull tab design can accommodate all normal installation
- 20° pitch to accommodate 12/12 roof pitch
- Large footprint 22 gauge dead soft aluminum base
- EPDM is lab tested and certified: IAPMO PS64-2012ea1

PRODUCT	DESCRIPTION	MODEL	UPC	CASE	PALLET
81499	Multi-Size 3-8 Aluminum Base Flashing	DSALUF38	012181814994	10	200

Specialty Solar Collars & Flashings



81870

- Commercial & residential: water-tight seal for solar mounting system
- Requires no mastic, caulking or taping – mess free

PRODUCT	DESCRIPTION	MODEL	UPC	CASE	PALLET
81870	8-3/4" x 12-1/2" Galvanized Base for 1/2", 3/4" or 1" Tubing	GB5	012181870006	20	400
81879	18" x 18" Galvanized Base for 1/2", 3/4" or 1" Tubing	GB518	012181818794	15	300
81916	8-3/4" x 12-1/2" Aluminum Base for 1/2", 3/4" and 1" Tubing	AB5	012181819166	20	1200
81937	18" x 18" Aluminum Base for 1/2", 3/4" or 1" Tubing	AB518	012181819371	15	300

Electrical Mast Roof Flashing



81731

- Constructed of UV stabilized flexible PVC with proven track record of 40 years
- Equipped with multi-piece stainless steel clamps
- Tongue and groove design for increased weather protection
- Limited Lifetime Warranty for life of the current roof system
- Available in two sizes

PRODUCT	DESCRIPTION	MODEL	UPC	CASE	PALLET
81731	Electrical Mast RetroFit Roof Flashing, 0 to 3-1/2" – 13-1/4" x 11" Base	EFB1	012181817315	15	540
81732	Electrical Mast RetroFit Roof Flashing, 0 to 5" – 14" x 15" Base	EFB2	012181817322	15	405

Mushroom Vent Cap



81753

- Fully assembled for easy installation
- Made from heavy-duty PVC that stands up to rain, hail, snow, and UV rays
- Stainless steel hex head bolts are corrosion resistant
- Charcoal gray cap compliments any type or color roof
- Product can be installed on 3" or 4" Schedule 40 pipe
- Will work on other exterior pipes that need protection

PRODUCT	DESCRIPTION	MODEL	UPC	CASE	PALLET
81753	Mushroom Vent Cap for 3- or 4-inch pipes	34MCL	012181817537	5	750

Caution: Ensure any sealant, mastic, or adhesive used is compatible with Flexible PVC, Polypropylene, EPDM, and Silicone. Do not apply any substances on the collar portion of the flashing.

Multi-Size 4N1™ Rain Collar



- Can be used to repair the elastomer sealing collar on all types of residential "no caulk" roof vent flashings quickly and easily
- Eliminates the need for a mastic or caulking type messy repair job
- Can be used to instantly repair a leak during a wet period, until the flashing can be replaced at a later time

- Large size covers the entire existing elastomer collar
- Fully tested for ultraviolet, ozone and weather resistance
- Individual sizes and multi-size adjustable models available
- Better appearance than a mastic



81721

PRODUCT	DESCRIPTION	MODEL	UPC	CASE	PALLET
81721	4N1® Collar for 1-1/4", 1-1/2", 2", 3" or 4" Vent Pipe	RC41	012181817216	20	4200

Standard Size Rain Collars

- Can be used to repair the elastomer sealing collar on all types of residential "no caulk" roof vent flashings quickly and easily
- Eliminates the need for a mastic or caulking type messy repair job
- Fully tested for ultraviolet, ozone and weather resistance
- Better appearance than a mastic repair job

- Can be used to instantly repair a leak during a wet period, until the flashing can be replaced at a later time
- Large size covers the entire existing elastomer collar
- For patching leaking no-caulk-style flashings
- Individual size and multi-size adjustable models available



81725

PRODUCT	DESCRIPTION	MODEL	UPC	CASE	PALLET
81725	Collar for 1-1/2" Vent Pipe	RC1	012181817254	100	4800
81730	Collar for 2" Vent Pipe	RC2	012181817308	100	4800
81735	Collar for 3" Vent Pipe	RC3	012181817353	75	3600
81740	Collar for 4" Vent Pipe	RC4	012181817407	75	3600
81745	Collar for 1/2", 3/4", 1" Vent Pipe	RC5	012181817452	100	3600

Low-Profile Collars



- For all metal style roof flashings
- Designed to fit all metal coned roof jacks/flashings 1" – 4"
- Requires no mastic, caulking or taping for a total waterproof seal

- Low-profile size
- Manufactured using a special EPDM material with UV inhibitor
- Limited Lifetime Warranty for life of the current roof system



81739

PRODUCT	DESCRIPTION	MODEL	UPC	CASE	PALLET
81739	Low Profile Collar for 1" Vent Pipe	LPC1	012181817391	100	8000
81741	Low Profile Collar for 1-1/2" Vent Pipe	LPC15	012181817414	100	8000
81742	Low Profile Collar for 2" Vent Pipe	LPC2	012181817421	100	8000
81743	Low Profile Collar for 3" Vent Pipe	LPC3	012181817438	100	4800
81744	Low Profile Collar for 4" Vent Pipe	LPC4	012181817445	100	3000

Caution: Ensure any sealant, mastic, or adhesive used is compatible with Flexible PVC, Polypropylene, EPDM, and Silicone. Do not apply any substances on the collar portion of the flashing.

METAL ROOF FLASHINGS

Metal Roof Flashings

- **Sleeve Flexibility:** Absorbs vibration and pipe movement caused by expansion/contraction
- **Easy On-site Customization:** Can accommodate all normal installations
- **Adaptable Base:** Designed to mold to most panel configurations and roof pitches regardless of pipe location

- **Weather Protection:** Made of EPDM or high-temperature silicone, these flashings are compounded specifically for maximum resistance to weathering due to ozone and ultraviolet light
- Fits any metal roof pitch to 45° for Square Base and 40° for Round Base
- EPDM is Lab Tested and certified: IAPMO PS64-2012ea1



PRODUCT	DESCRIPTION	MODEL	UPC	CASE	PALLET
Square Base					
81455	#3, Gray, EPDM, for pipe sizes 0"–5-3/4"	MRF3GSQ	012181814550	10	1050
81456	#4, Gray, EPDM, for pipe sizes 2-3/4"–7"	MRF4GSQ	012181814567	10	
81457	#5, Gray, EPDM, for pipe sizes 3-3/4"–7-3/4"	MRF5GSQ	012181814574	10	
81458	#6, Gray, EPDM, for pipe sizes 4-3/4"–10"	MRF6GSQ	012181814581	10	
81459	#7, Gray, EPDM, for pipe sizes 6"–11"	MRF7GSQ	012181814598	10	
81845	#3, Black, EPDM, for pipe sizes 0"–5-3/4"	MRF3BSQ	012181818459	6	1050
81460	#4, Black, EPDM, for pipe sizes 2-3/4"–7"	MRF4BSQ	012181814604	10	
81461	#5, Black, EPDM, for pipe sizes 3-3/4"–7-3/4"	MRF5BSQ	012181814611	10	
81462	#6, Black, EPDM, for pipe sizes 4-3/4"–10"	MRF6BSQ	012181814628	10	
81463	#7, Black, EPDM, for pipe sizes 6"–11"	MRF7BSQ	012181814635	10	
81464	#3, Terra Cotta, Silicone, for pipe sizes 0"–5-3/4"	MRF3TCSSQ	012181814642	6	1050
81465	#4, Terra Cotta, Silicone, for pipe sizes 2-3/4"–7"	MRF4TCSSQ	012181814659	6	
81466	#3, Black, Silicone, for pipe sizes 0"–5-3/4"	MRF3BSSQ	012181814666	6	1050
81467	#4, Black, Silicone, for pipe sizes 2-3/4"–7"	MRF4BSSQ	012181814673	6	
Round Base					
81820	#1, Gray, EPDM, for pipe sizes 0"–2-3/8"	MRF1GRD	012181818206	10	240
81821	#2, Gray, EPDM, for pipe sizes 1-3/4"–3"	MRF2GRD	012181818213	10	240
81822	#3, Gray, EPDM, for pipe sizes 0"–5"	MRF3GRD	012181818220	10	1000
81823	#4, Gray, EPDM, for pipe sizes 3"–6-1/4"	MRF4GRD	012181818237	10	240
81824	#5, Gray, EPDM, for pipe sizes 4-1/4"–7-1/2"	MRF5GRD	012181818244	10	240
81825	#6, Gray, EPDM, for pipe sizes 5"–9"	MRF6GRD	012181818251	10	240
81826	#7, Gray, EPDM, for pipe sizes 6"–11"	MRF7GRD	012181818268	10	240
81468	#1, Black, EPDM, for pipe sizes 0"–2-3/8"	MRF1BRD	012181814680	10	
81469	#2, Black, EPDM, for pipe sizes 1-1/4"–3"	MRF2BRD	012181814697	10	
81470	#3, Black, EPDM, for pipe sizes 0"–5"	MRF3BRD	012181814703	10	1000
81471	#4, Black, EPDM, for pipe sizes 3"–6-1/4"	MRF4BRD	012181814710	10	
81472	#5, Black, EPDM, for pipe sizes 4-1/4"–7-1/2"	MRF5BRD	012181814727	10	
81473	#6, Black, EPDM, for pipe sizes 5"–9"	MRF6BRD	012181814734	10	
81474	#7, Black, EPDM, for pipe sizes 6"–11"	MRF7BRD	012181814741	10	
81475	#3, Terra Cotta, Silicone, for pipe sizes 0"–5"	MRF3TCSR	012181814758	6	
81476	#5, Terra Cotta, Silicone, for pipe sizes 4-1/4"–7-1/2"	MRF5TCSR	012181814765	6	
81477	#3, Black, Silicone, for pipe sizes 0-5"	MRF3BSRD	012181814772	6	
81478	#5, Black, Silicone, for pipe sizes 4-1/4"–7-1/2"	MRF5BSRD	012181814789	6	
Retro Fit Round Base					
81494	#1, Gray, EPDM, for pipe sizes 3/4"–2-3/4"	MRF1GRDRF	012181814949	10	
81495	#2, Gray, EPDM, for pipe sizes 2"–7-1/4"	MRF2GRDRF	012181814956	10	
81496	#3, Gray, EPDM, for pipe sizes 3-1/4"–10"	MRF3GRDRF	012181814963	10	
81828	#1, Black, EPDM, for pipe sizes 3/4"–2-3/4"	MRF1BRDRF	012181818282	10	480
81829	#2, Black, EPDM, for pipe sizes 2"–7-1/4"	MRF2BRDRF	012181818299	10	240
81830	#3, Black, EPDM, for pipe sizes 3-1/4"–10"	MRF3BRDRF	012181818305	10	

Caution: Ensure any sealant, mastic, or adhesive used is compatible with Flexible PVC, Polypropylene, EPDM, and Silicone. Do not apply any substances on the collar portion of the flashing.

Type B Vent Flashings

- 28 gauge G-90 ASTM-A653 CS Galvanized steel
- Conical shape allows adjusting from 0/12 to 8/12 roof pitch
- Steep pitch models adjust from 8/12 to 12/12 roof pitch

- Cone and base seams have sealant on the inside of flashing
- Complies with ANSI / UL 441

PRODUCT	DESCRIPTION	MODEL	UPC	CASE	PALLET
81575	3" Type B Flashing	TB3	012181815755	12	384
81576	4" Type B Flashing	TB4	012181815762	12	384
81577	5" Type B Flashing	TB5	012181815779	12	384
81578	6" Type B Flashing	TB6	012181815786	12	384
81579	7" Type B Flashing	TB7	012181815793	6	96
81580	8" Type B Flashing	TB8	012181815809	6	96
81585	3" Type B Flashing – Steep Pitch	TB3SP	012181815854	12	384
81586	4" Type B Flashing – Steep Pitch	TB4SP	012181815861	12	384



81575

Multi-Cap™ Type B Vent Caps

- Recommended for flue, hot stack, or Type B installations.
- Constructed from heavy-duty aluminum for durability.
- Resists rust and corrosion, ensuring long-lasting performance.

- Prevents weather, debris, and birds from entering the flue
- Non-clogging positive draft design
- Clamp fittings adjustable for all standard sizes
- Aluminum construction
- Complies with ANSI / UL 441

PRODUCT	DESCRIPTION	MODEL	UPC	CASE	PALLET
81694	Type B-Vent Cap, for outside diameter of 2-7/8" to 4-7/8"	VC35	012181816943	12	216
81695	Type B-Vent Cap, for outside diameter of 4-7/8" to 6-7/8"	VC57	012181816950	12	96
81696	Type B-Vent Cap, for outside diameter of 6-7/8" to 8-7/8"	VC79	012181816967	12	96
81697	Type B-Vent Cap, for outside diameter of 8-7/8" to 10-7/8"	VC911	012181816974	1	63
81698	Type B-Vent Cap, for outside diameter of 11-7/8" to 14"	VC1214	012181816981	1	28



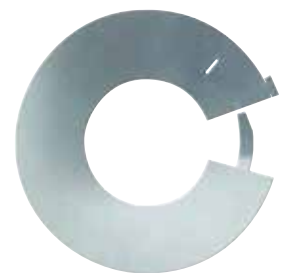
81694

Type B Vent Adjustable Storm Collars

- 28 gauge G-90 ASTM-A653 CS Galvanized steel
- Adjustable slip fit tab provides snug fit around vent
- Locking tab secures installation

- 7"-9" storm collar accommodates multi-sizes.
- Complies with ANSI / UL 441

PRODUCT	DESCRIPTION	MODEL	UPC	CASE	PALLET
81587	3" Type Adj Storm Collar	SC3	012181815878	24	5400
81588	4" Type Adj Storm Collar	SC4	012181815885	24	5400
81589	5" Type Adj Storm Collar	SC5	012181815892	24	5400
81590	6" Type Adj Storm Collar	SC6	012181815908	24	5400
81591	7-9" Type Adj Storm Collar	SC79	012181815915	24	2400



81587

Stamped Storm Collar

- Works with Type B Vent flashing
- Provides a waterproof seal at roof stack penetration
- Storm collar is installed and sealed above the flashing.

- 28 gauge G-90 ASTM-A653 CS Galvanized steel
- Complies with ANSI / UL 441

PRODUCT	DESCRIPTION	MODEL	UPC	CASE	PALLET
81597	3" Type B Storm Collar Stamped	SC3S	012181815977	24	2880
81598	4" Type B Storm Collar Stamped	SC4S	012181815984	24	2880
81601	5" Type B Storm Collar Stamped	SC5S	012181816011	24	1920
81602	6" Type B Storm Collar Stamped	SC6S	012181816028	24	1920

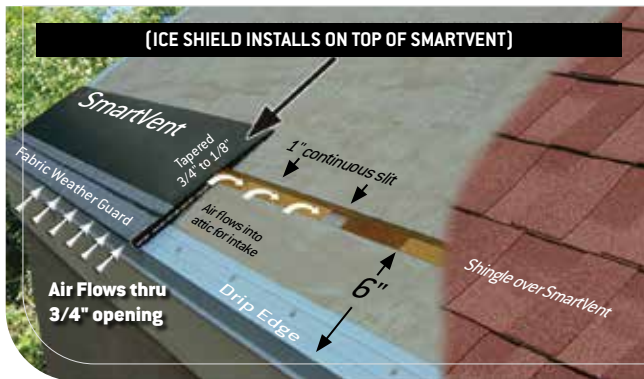


81597

SMARTVENT™ ATTIC INTAKE & EXHAUST



IMPROVE YOUR EAVE INTAKE



EASIER INSTALL

SmartVent™ is light weight, nail gunnable, easy to cut with a knife and keeps the roofer on the roof.

LIFETIME WARRANTY

SmartVent™ carries a warranty for the lifetime of the roof on which it is installed.

UNMATCHED VERSATILITY

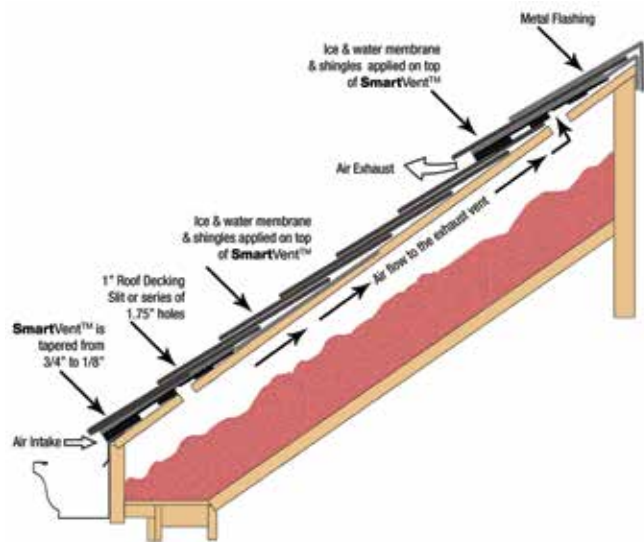
SmartVent™ offers a continuous venting area that can be used all the way up the roof from eave to ridge.

BETTER SOLUTION

SmartVent™ is unnoticeable from the ground, provides cross-channel airflow to the exhaust vents and is an alternative for soffits that could be blocked.

ICC-ES APPROVED

ESR-2484



SmartVent Off Peak

SmartVent

- Use on eaves, mid-roof, off-wall, shed-wall, off-peak, dormer and valley
- Intake or exhaust for all climates
- 9 square inches of NFA per linear foot (18 when used on both sides)
- Tapered for a natural look
- Fabric Weather Guard protects against rain and snow infiltration

PRODUCT	DESCRIPTION	MODEL	UPC	CASE	PALLET
80750	SmartVent™ (3' per unit)	SV1	012181807507	18	504



80750

SmartVent Tapered End Caps

- Provides a perfectly tapered end to SmartVent™
- Eliminates the need to fabricate end caps on the job
- Fabric Weather Guard protects against rain and snow infiltration
- Creates a watertight seal as the shingles slope down
- Universal pieces install on right side or left side of the SmartVent run

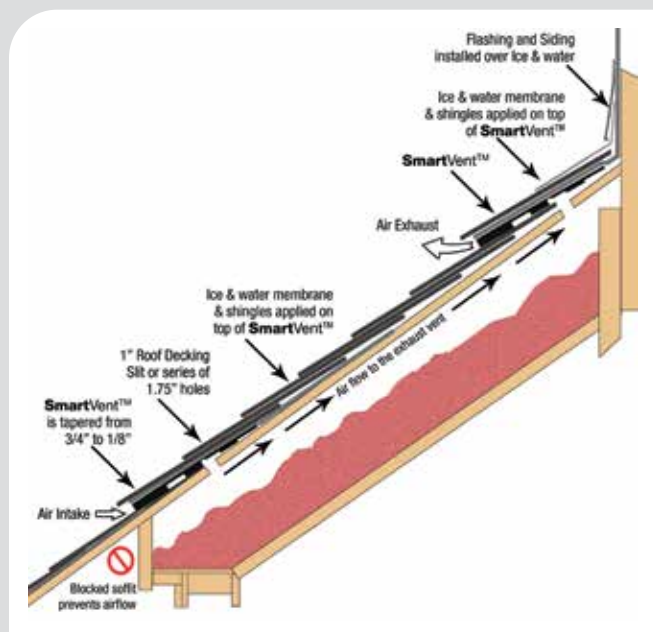
PRODUCT	DESCRIPTION	MODEL	UPC	CASE	PALLET
80751	SmartVent™ End Caps	SVEC	012181807514	12	324



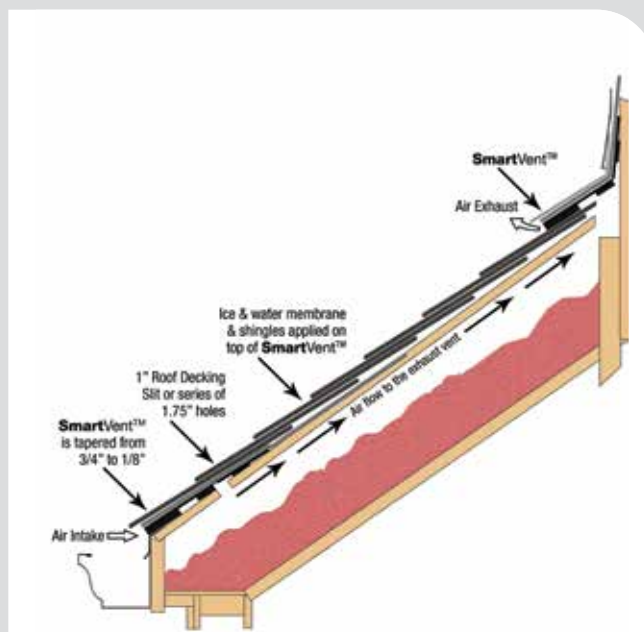
80751

THE ALL-PURPOSE INTAKE & EXHAUST SOLUTION

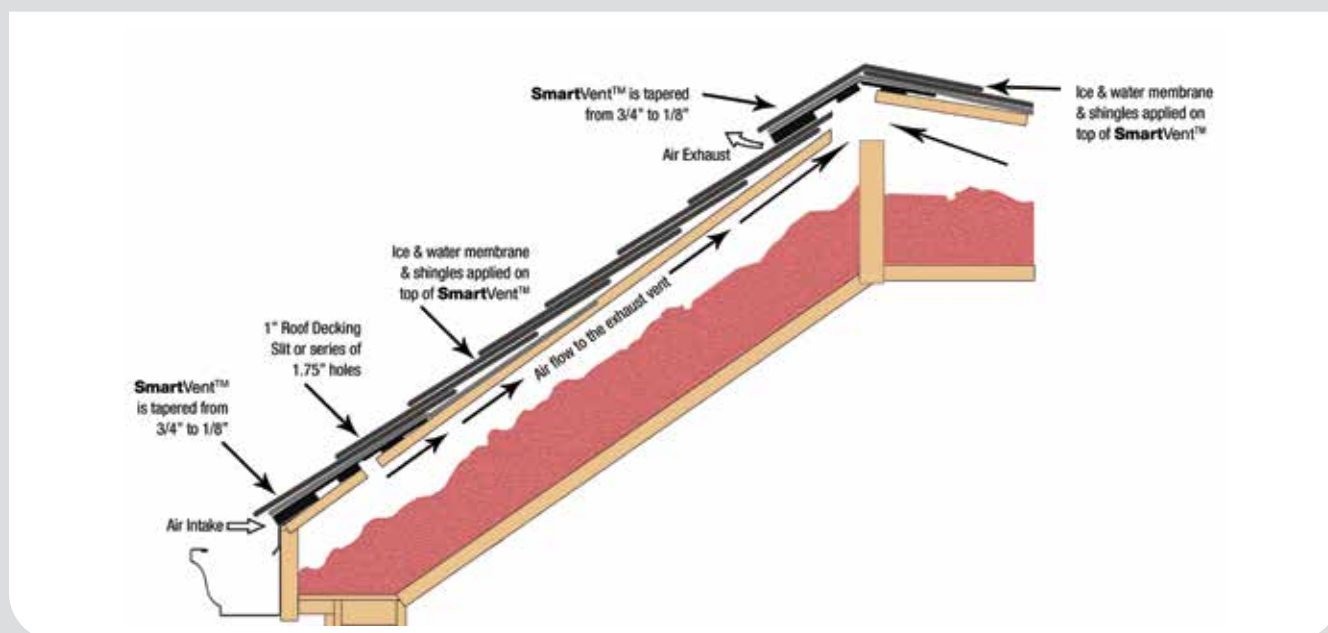
MID-ROOF & OFF WALL



SHED ROOF



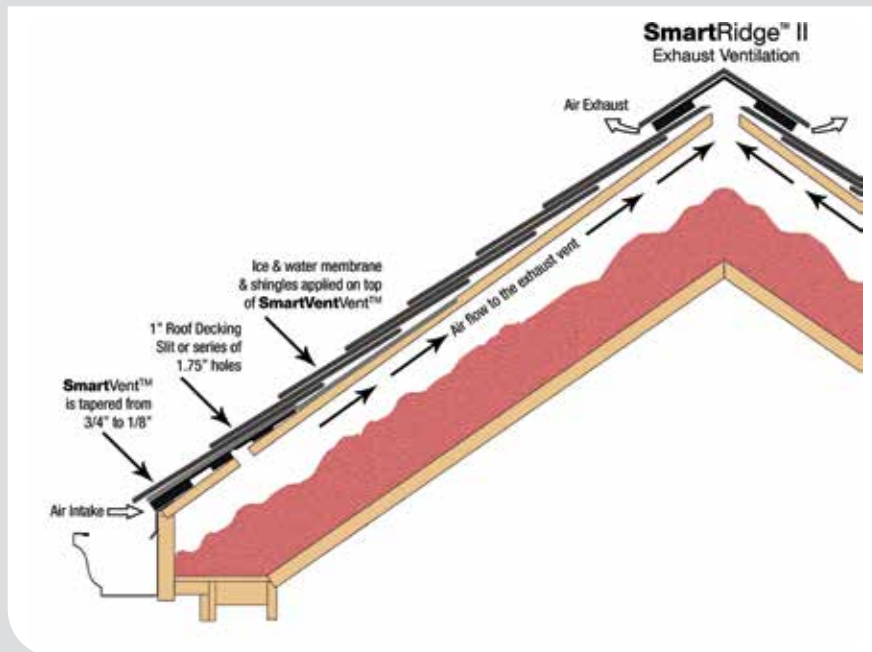
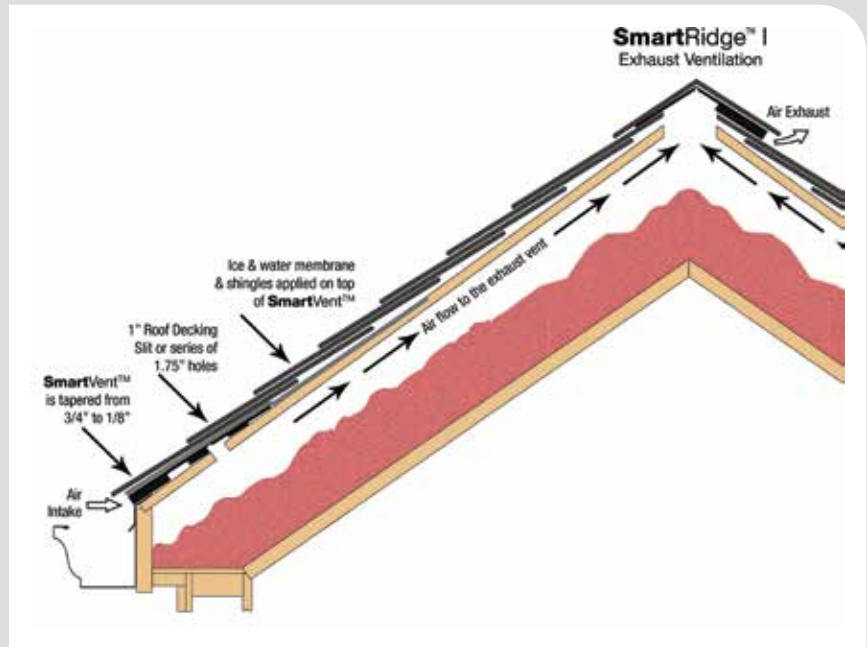
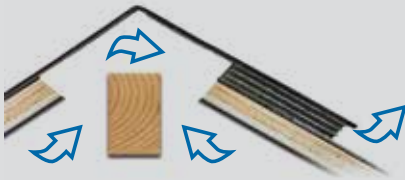
DORMER PEAK



SmartRidge™ I

One Sided Ridge Ventilation

IPS SmartRidge™ I is the most efficient ridge exhaust system. By exhausting air on one side, the SmartRidge™ I siphons 100% attic exhaust without pulling in exterior air, rain, snow or ice from the opposite side of the vent. The SmartRidge™ I produces a natural look with no street side lift making it the most effective and cleanest looking ridge vent system.



SmartRidge™ II

Two Sided Hip & Ridge Ventilation

IPS SmartRidge™ II is a versatile vent that can be used for hip and ridge ventilation. Equipped with protective weather fabric, the SmartRidge™ II prevents rain, sleet and snow from penetrating the attic and damaging the roof structure. SmartRidge™ II cuts with a utility knife and can be hand or nail gunned for easy install.

SMARTRIDGE™ HIP & RIDGE VENTILATION

ValleyVent™



80756

- Provides airflow in difficult-to-ventilate and obstructed areas
- Polyethylene construction is easy to handle and install

- Helps prevent ice dams, "hot spots" and mold growth
- Increases the efficiency of the ventilation system

PRODUCT	DESCRIPTION	MODEL	UPC	CASE
80756	ValleyVent™ (2' per unit)	VV1	012181807569	84

SmartRidge™ I



80752

- 100% attic exhaust
- No street side lift for improved appearance
- Fabric Weather Guard protects against rain and snow infiltration

- Equivalent to 18 square inches of NFA
- Achieves a balanced ventilation system with SmartVent™
- Easy to cut and install

PRODUCT	DESCRIPTION	MODEL	UPC	CASE	PALLET
80752	SmartRidge™ I (3' per unit)	SR1	012181807521	16	288

SmartRidge™ II



80753

- Fabric Weather Guard protects against rain and snow infiltration
- 18 square inches of NFA

- Achieves a balanced ventilation system with SmartVent™
- Easy to cut and install

PRODUCT	DESCRIPTION	MODEL	UPC	CASE	PALLET
80753	7" SmartRidge™ II (3' per unit)	SR27	012181807538	24	432
80754	8.5" SmartRidge™ II (3' per unit)	SR285	012181807545	16	288
80755	10.5" SmartRidge™ II (3' per unit)	SR2105	012181807552	12	216



SnapCap™

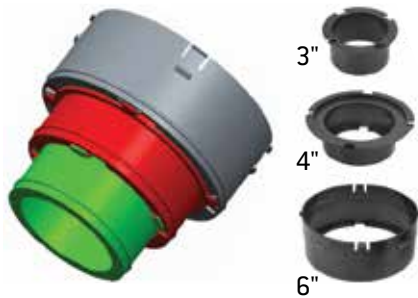
Bathroom, Kitchen, & Dryer Exhaust Vent Cap

SnapCap™ is the highest performance, most versatile bathroom, kitchen, and dryer exhaust vent cap available. Equipped with a counterbalanced damper, SnapCap works with any CFM fan and provides a secure connection to 3", 4" and 6" flexible or rigid duct. SnapCap™ is constructed of heavy gauge aluminum or galvanized steel to provide unmatched durability and is backed by a Life of the Roof™ warranty. Each SnapCap™ package includes an adapter set and cable tie.



Low-Profile, Durable Gauge Design

SnapCap™ has a lower profile on the roof and a heavier gauge base and housing for improved aesthetics and increased performance. SnapCap™ is available in aluminum and galvanized steel.



Easy "Snap-In" Installation

SnapCap™ adapters easily snap into the vent cap for a secure connection. Easily connect ductwork with a cable tie, duct tape, or a sheet metal screw



Galvanized Steel SnapCap™

- All-Flow™ capability: patented counterbalanced damper works with any CFM fan
- 3", 4", & 6" adapters for multiple application sizes
- Heavy gauge flange and housing
- Three powder coated finishes available
- Adapter set and cable tie included with each SnapCap™

PRODUCT	DESCRIPTION	MODEL	UPC	CASE	PALLET
81680	 SnapCap – Brown Galvanized Steel	SCBRG	012181816806	1	72
81681	 SnapCap – Black Galvanized Steel	SCBLG	012181816813	1	72
81682	 SnapCap – Gray Galvanized Steel	SCGRG	012181816820	1	72



81680

Aluminum SnapCap™

- All-Flow™ capability: patent pending counterbalanced damper works with any CFM fan
- 3", 4", & 6" adapters for multiple application sizes
- Heavy gauge flange and housing
- Three powder coated finishes available
- Adapter set and cable tie included with each SnapCap™

PRODUCT	DESCRIPTION	MODEL	UPC	CASE	PALLET
81684	 SnapCap – Black Aluminum	SCBLAL	012181816844	1	72



81684

COMMERCIAL ROOFING PRODUCTS

APE-2000 One-way Air Pressure Equalizer



99100

DIMENSIONS:

Height: 11.25"

Base Diameter: 11.00"

Stack Diameter: 6.00"

Cap Height: 4.25"

Recommended for all types of roofing systems.

NOTE: Available with or without one-way insert. Also available with removable caps (please specify).

- .063 gauge aluminum
- "One-way air pressure equalizer" vent system
- Constructed of heavy gauge aluminum
- Fully insulated to eliminate condensation
- Engineered to withstand extended exposure to the elements without deterioration
- Will reduce the risk of ballooning, blow-offs, graver spreading, deterioration of roof insulation and deck seam separation
- 20-year warranty

PRODUCT	DESCRIPTION	MODEL	UPC	CASE	PALLET
99100	APE 2000 W/Tite-Top & Insulator, One Way	APE2000WTT	012181991008	4	80
99101	APE 2000 W/Tite-Top No Insulator, Two Way	APE2000WOTT	012181991015	4	80
99102	APE 2000 W/Removeable Top & Insulator, One Way	APE2000WRT	012181991022	4	80
99103	APE 2000 W/Removeable Top, No Insulator, Two Way	APE2000WORT	012181991039	4	80

Ballard JL-10 One-way Vent



99104

DIMENSIONS:

Height: 9.75"

Base Diameter: 11.25"

Stack Diameter: 4.00"

Cap Height: 1.50"

Recommended for all types of roofing systems.

- .063 gauge aluminum
- "One-way" vent system
- Constructed of heavy gauge aluminum, and fully insulated to eliminate condensation
- One piece spun aluminum construction eliminates the possibility of split seams and blown off caps
- Layer of one-way fabric allows moisture and air to escape, but not to enter the roofing system
- Unlike other vents on the market, there are no moving parts to wear out or clog due to insects or debris
- 20-year warranty

PRODUCT	DESCRIPTION	MODEL	UPC	CASE	PALLET
99104	Ballard JL-10 W/Tite-Top & Insulator, One Way	JL10	012181991046	10	200

Jimco SJL-3 Economy Vent

Recommended for all types of roofing systems. Install one vent per 900 sq. ft. of roof area.

NOTE: Available with or without one-way EPS insert (please specify)

- .063 gauge aluminum
- "Economy one-way" vent system
- Constructed of heavy gauge aluminum
- Fully insulated to eliminate condensation
- Layer of one-way fabric that allows moisture and air pressure to escape, but not enter the roofing system
- Factory secured Tite Top design omits any possibility of backwash and cannot become detached from the main stack
- 20-year warranty
- JIMCO LT

PRODUCT	DESCRIPTION	MODEL	UPC	CASE	PALLET
99105	SJL-3 W/Tite-Top & Insulator, One-Way	SJL3W	012181991053	20	400
99106	SJL-3 W/Tite-Top & Insulator, Two-Way	SJL3W0	012181991060	20	400



99106

DIMENSIONS:

Height: 8.50"
Base Diameter: w8.00"
Stack Diameter: 3.00"
Cap Height: 2.50

Jimco LT-6 One-ay Air Pressure Equalizer

Recommended for all types of roofing systems. Used also as a mobile home and trailer fan replacement vent.

- .063 gauge aluminum
- Designed to withstand extended pressure andt air moisture trapped within the roofing system, for the purpose of allowing pressure (air moisture) to escape
- Constructed of heavy spun aluminum
- 20-year warranty

PRODUCT	DESCRIPTION	MODEL	UPC	CASE	PALLET
99107	LT-6 W/Tite Top & Insulator, One Way	LT6WTT	012181991077	8	160
99108	LT-6 W/Tite Top, No Insulator, Two Way	LT6W0TT	012181991084	8	160
99109	LT-6 W/Removable Top & Insulator, One Way	LT6WRT	012181991091	8	160
99110	LT-6 W/Removable Top, No Insulator, Two Way	LT6W0RT	012181991107	8	160



99107

DIMENSIONS:

Height: 6.50"
Base Diameter: 10.25"
Stack Diameter: 6.00"
Cap Height: 4.25"

COMMERCIAL ROOFING PRODUCTS

Jimco Breather Vent



99111

DIMENSIONS:

Height: 9.50"

Base Diameter: 11.00"

Stack Diameter: 4.25"

Cap Height: 2.50"

Recommended for all types of roofing systems. Install one vent per 1000 sq. ft. of roof area

- .063 gauge aluminum
- Constructed of a heavy gauge spun aluminum
- Designed to withstand prolonged exposure to the toughest elements without deterioration
- Cap has been engineered to eliminate any possibility of backwash
- Cannot become detached from the main stack, protecting it from the possibility of exposing breather holes to the elements
- 20-year warranty

PRODUCT	DESCRIPTION	MODEL	UPC	CASE	PALLET
99111	Jimco Breather Vent, Two-Way	JIMCO	012181991114	10	200

Jimco VJ-2 One Piece Vent



99115

DIMENSIONS:

Height: 5.50"

Base Diameter: 10.25"

Stack Diameter: 6.00"

Cap Height: 1.20"

Recommended for all types of roofing systems. Install one vent per 1100 sq. ft. of roof area.

- .063 gauge aluminum
- Constructed of one piece heavy gauge spun aluminum
- Designed and fabricated to withstand extended exposure to the toughest elements without deterioration
- Low profile vent versatile for application on mobile homes, house trailers, etc.
- Large stack capacity able to handle a great amount of pressure from built-up or single ply roofs
- 20-year warranty

PRODUCT	DESCRIPTION	MODEL	UPC	CASE	PALLET
99115	VJ-2, Two-Way	VJ2	012181991152	10	200

Jimco CJ-30 Vent

Recommended for all types of roofing systems. Install one vent per 600 sq. ft. of roof area.

NOTE: Also available with removable cap (please specify).

- .063 gauge aluminum
- Constructed of heavy gauge spun aluminum
- Designed to withstand extended exposure to the toughest elements without deterioration
- Cap has been engineered to eliminate any possibility of backwash
- Cannot become detached from the main stack, protecting from the possibility of exposing the breather holes
- 20-year warranty

PRODUCT	DESCRIPTION	MODEL	UPC	CASE	PALLET
99112	CJ-30 W/Removable Top, Two-Way	CJ30RT	012181991121	20	400
99113	CJ-30 W/Tite-Top, Two-Way	CJ30TT	012181991138	20	400



99112

DIMENSIONS:

Height: 5.50"
Base Diameter: 10.25"
Stack Diameter: 6.00"
Cap Height: 1.20"

Jimco HT-20 Low Profile Vent

Recommended for all types of roofing systems. Install one vent per 200 sq. ft. of roof area.

- .063 gauge aluminum
- Low profile vent, mainly used in new construction of mobile homes, house trailers and also in the re-roofing industry
- Manufactured of a heavy gauge spun aluminum
- Cap design will not allow backwash
- 20-year warranty

PRODUCT	DESCRIPTION	MODEL	UPC	CASE	PALLET
99099	HT-20 With Tite Top, Two-Way	HT20TT	012181990995	50	1000
99114	HT-20 With Removable Top, Two-Way	HT20	012181991145	50	1000



99114

DIMENSIONS:

Height: 5.50"
Base Diameter: 6.00"
Stack Diameter: 3.00"
Cap Height: 2.50"

Roof Drain Kit

- Heavy duty plastic body
- 3" and 4" pipe sizes
- Clamping ring/gravel guard standard on all drains
- Two-piece underdeck clamp kits
- Accepts Schedule 40 pipe via a 3" or 4" Expansion Coupling
- Available with Plastic or Cast Iron Domes
- 20-year warranty

PRODUCT	DESCRIPTION	MODEL	UPC	CASE
86096	3" PVC Roof Drain W/Cast Iron Dome	4863K	012181860960	1
86106	4" PVC Roof Drain W/Cast Iron Dome	4864K	012181861066	1
86097	3" PVC Roof Drain with Plastic Dome	4863PK	012181860977	1
86107	4" PVC Roof Drain with Plastic Dome	4864PK	012181861073	1



86096

Kits Include: Drain, underdeck clamp with hardware, expansion coupling, 4" section of PVC pipe and installation guide

COMMERCIAL ROOFING PRODUCTS

Retrofit Insert Roof Drains



86111

DIMENSIONS:

Height: 5.50"
Base Diameter: 6.00"
Stack Diameter: 3.00"
Cap Height: 2.50"

Recommended for all types of roofing systems.

- RetroFit drains with expandable anti-back-up seal(s)
- Constructed of a heavy gauge (.081)
- Spun Aluminum
- Bolt-in-place strainer dome
- 20-year warranty

PRODUCT	DESCRIPTION	MODEL	UPC	CASE
86111	Drain Pipe Size: 3" Outlet Outside Diameter: 2.75" Outlet Length: .727"	86111	012181861110	6
86112	Drain Pipe Size: 4" Outlet Outside Diameter: 3.75" Outlet Length: .727"	86112	012181861127	6
86113	Drain Pipe Size: 6" Outlet Outside Diameter: 5.75" Outlet Length: .727"	86113	012181861134	6

Commercial Roof Drains & Accessories



86115



86121



87580

PRODUCT	DESCRIPTION	MODEL	UPC	CASE
86115	3" PVC Roof Drain W/Plastic Dome	4865	012181861158	1
86120	3" ABS Roof Drain W/Plastic Dome	5865	012181861202	1
86095	3" PVC Roof Drain W/Cast Iron Dome	4863	012181860953	1
86100	3" ABS Plastic Roof Drain W/Cast Iron Dome	5863	0012181861004	1
86121	4" PVC Roof Drain W/Plastic Dome	4866	012181861219	1
86122	4" ABS Roof Drain W/Plastic Dome	5866	012181861226	1
86105	4" PVC Roof Drain W/Cast Iron Dome	4864	012181861059	1
86110	4" ABS Plastic Roof Drain W/Cast Iron Dome	5864	012181861103	1
86125	Underdeck Clamping Collar W/ Hardware, 3" or 4" Roof Drain	5555	012181861257	1
89522	Plastic Dome	89522	012181895221	5
89527	Cast Iron Dome	89527	012181895276	5
87585	4" Rubber Expansion Coupling	87585	012181875858	20

Cast Iron Roof Drain

- 6-1/2" dome
- Available with bottom or side outlet

- Limited Lifetime Warranty for life of the current roof system

PRODUCT	DESCRIPTION	MODEL	UPC	CASE
60213	3" No-hub Bottom Outlet	ABA573	767580020773	1
60214	4" No-hub Bottom Outlet	ABA574	767580020780	1



60213

Cast Iron Roof Drain

- Overflow combo
- 8 -3/4" CD
- 6-1/2" dome

- Limited Lifetime Warranty for life of the current roof system

PRODUCT	DESCRIPTION	MODEL	UPC	CASE
60219	2" No-hub Outlet	ABA602	767580020773	1
60220	3" No-hub Outlet	ABA603	767580020865	1
60222	4" No-hub Side Outlet	ABA604	767580020872	1
60218	6-1/2" Dome with Ring & Hardware	ABA586	767580020810	1



60219

DIMENSIONS:

Height: 5.50"
Base Diameter: 6.00"
Stack Diameter: 3.00"
Cap Height: 2.50"

Multi-Purpose Towels

- Heavy Duty/ Pre-Moistened
- Removes Embedded Grime Easily

- 90 Towels Per Dispenser

PRODUCT	DESCRIPTION	MODEL	UPC	CASE
512975	Multi-Purpose Towels	RH-PW1	044752020039	6



512975

Roof Top Blox® Adjustable Pipe Support



80600

- Made of Polypropylene Copolymer
- Bundled in 8 pack totes
- Includes on-board galvanized strap
- 250 lbs. max weight single point

- 350 lbs. max weight with strut
- Perfect solution for supporting piping and equipment on flat commercial roofs

PRODUCT	DESCRIPTION	MODEL	UPC	CASE	PALLET
80600	Roof Top Blox-Adj Pipe Support (8-pack)	RTB01	898417002010	8	320

1.5" Blox Height Extension



80601

- Fastens directly on top of Blox
- Two #10 screws provided
- Use to elevate Blox to 6" overall height

- 100 lbs./45 kg max loads when directly mounted to blox or when elevated on threaded rods
- Available in 24 or 48 packs

PRODUCT	DESCRIPTION	MODEL	UPC	CASE
80601	1.5" Blox Height Extension	XTB0224	898417002027	24

Securing Brackets



80607

- Pair of securing brackets secure Blox directly to roof surface
- Help to secure Blox to protect against moderate wind, water and snow loads

- Brackets lock onto engineered mounting tabs with two #12x3/4" screws, then glue to roof surface with structural adhesive

PRODUCT	DESCRIPTION	MODEL	UPC	CASE
80607	Securing Bracket (1 pair)	SCB07	898417002072	32

Small & Large Pipe Rollers



80605

80611

- Small aluminum roller supports 1" - 3" diameter pipe
- Large aluminum roller supports 4" - 6" diameter pipe
- Use on long pipe runs to allow for expansion and contraction of piping
- Can be mounted centrally or side by side on Blox

- Can be mounted directly on Blox or elevated with extension rods (R0D03)
- Includes strut, bolts and mounting screws (Large rollers only)

PRODUCT	DESCRIPTION	MODEL	UPC	CASE	PALLET
Small Pipe Rollers					
80605	1" - 3" Small Pipe Roller	ROL05	898417002058	16	1152
80611	1"-3" Small Pipe Roller Less Containment Band	ROL08	012181806111	16	
Large Pipe Roller					
80606	4" - 6" Large Pipe Roller	ROL06	898417002065	8	576



80606

12" Extension Rods

- 11-1/2" long, 1/2" diameter zinc coated threaded rods with nuts and washers
- Use with XTBO2, STR04, ROL05 or ROL06 to elevate piping up to 14" overall height
- Insert rods a minimum of 1" into blox, not to exceed 3"

PRODUCT	DESCRIPTION	MODEL	UPC	CASE	PALLET
80603	12" Extension Rods	R0D03	898417002034	24	3360



80603

10" Galvanized Slotted Strut

- Mounts directly to Blox top with #14x1 sheet metal screws and washers
- Can also be installed elevated with threaded extension rods
- Accepts strut clamps
- 350 lbs./158 kg max. static load when strut is applied to Blox

PRODUCT	DESCRIPTION	MODEL	UPC	CASE	PALLET
80604	10" Slotted Steel Strut	STR04	898417002041	24	3360



80604

M-1® Structural Adhesive

- Non-solvent based, flexible, high-bond M-1 adhesive
- 10 oz. tube bonds 10 pairs of SCB07
- Bonds SCB07 Securing Brackets to all roof surfaces and materials
- Available in gray or white (Not to be applied under Blox)

PRODUCT	DESCRIPTION	MODEL	UPC	CASE	PALLET
80608	Structural Adhesive, Gray	ADH12	898417002126	24	1728
80609	Structural Adhesive, White	ADH12WH	012181806098	24	1728



80608

Primer for M-1® Adhesive

- Primer required for bonding with ADH12 to TPO roofing systems.
- One pint primes TPO membranes for 35 pairs of Securing Brackets

PRODUCT	DESCRIPTION	MODEL	UPC	CASE
80610	TPO Primer, F1280 (pint)	PRI13	012181806104	4



80610



IPS
ROOFING PRODUCTS™

IPS Corporation
500 Distribution Parkway
Collierville, TN 38017

800-888-8312
901-853-5008 fax

IPSRoofingProducts.com
ips.roofing@ipscorp.com