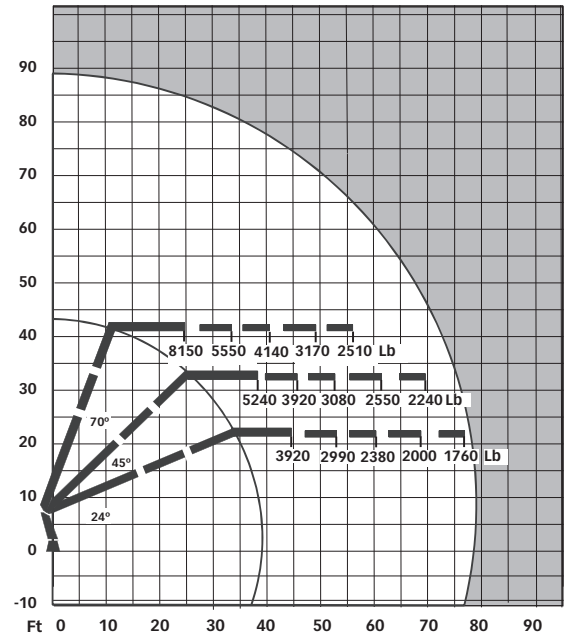


# HIAB 435 K HIPRO

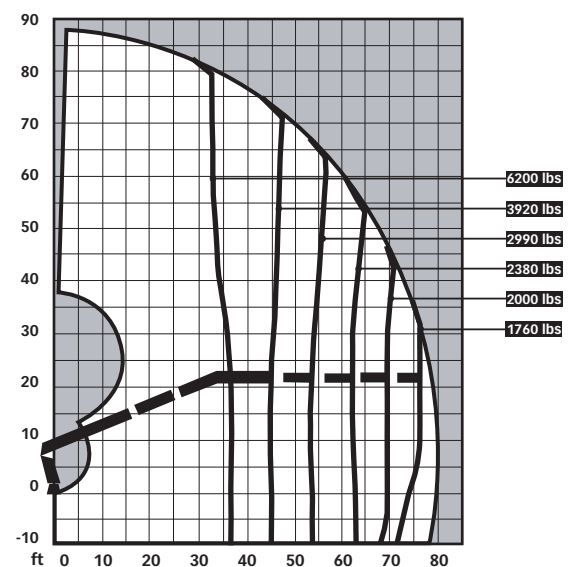
TECHNICAL DATA	HIAB 435K HIPRO
Lifting capacity, max.	280200 lbs.feet(38,8 tm)
Hydraulic outreach, standard	79' 5"
Hydraulic first boom extension	20' 0"
First boom extension cylinder pushing force	27000 lbf
First boom extension cylinder pulling force	20900 lbf
Hydraulic second boom extension	31' 7"
Second boom extension cylinder pushing force	12600 lbf
Second boom extension cylinder pulling force	9900 lbf
Lifting Height at standard first boom 24 deg	21' 4"
Lifting Height at standard first boom 45 deg	32' 6"
Lifting Height at standard first boom 70 deg	41' 0"
Max Lifting Height above installation level	87' 11"
Outreach - Lifting capacity, hydraulic extension First boom 24 deg, Second boom horizontal	44' 7" - 3920 lbs 52' 10" - 2990 lbs 60' 8" - 2380 lbs 68' 7" - 2000 lbs 76' 1" - 1760 lbs
Outreach - Lifting capacity, hydraulic extension First boom 45 deg, Second boom horizontal	37' 5" - 5240 lbs 45' 7" - 3920 lbs 53' 6" - 3080 lbs 61' 4" - 2550 lbs 68' 11" - 2240 lbs
Outreach - Lifting capacity, hydraulic extension First boom 70 deg, Second boom horizontal	24' 3" - 8150 lbs 32' 6" - 5550 lbs 40' 4" - 4140 lbs 48' 3" - 3170 lbs 55' 9" - 2510 lbs
Recommended oil flow V91M variable pump	21 -32 gal./min.
Working pressure	5079 psi
Power needed at rec. oil flow V91M variable pump	63 -94 hp
Oil in tank, large size	41 gal
Tank capacity, large size	54 gal
Oil in tank, extra-large size	45 gal
Tank capacity, extra-large size	57 gal
Slewing angle	460 °
Max. Slope viable at full capacity	4,4 °
Slewing torque, gross	37400 ft-lbs(3990 psi)
Slewing speed	12 deg/sec
Lifting speed at standard hydr. outreach and rec.oil flow	4,63 ft/s
ASC - activated lifting speed	0,93 ft/s
Hydraulic first boom extension time out/in	39 s /30 s
Hydraulic second boom extension time out/in	31 s /27 s
Height in transport position	9' 3"
Width in transport position	8' 3"
Installation space needed for height reference 1700mm (5' 7")	3' 6"
Weights:	
Crane in standard version without support legs	13340 lbs
Frame attachments	258 lbs
Support leg equipment 7m span	1370 -1430 lbs

## LOAD DIAGRAM

To the left of the curve the indicated loads can be handled with any loader function provided that the positions of the booms are optimized from a force point of view.



## 435K HIPRO



## 435K HIPRO