



EFFER
RAISE THE VALUE[®]

ENGLISH
24 JUL 2018

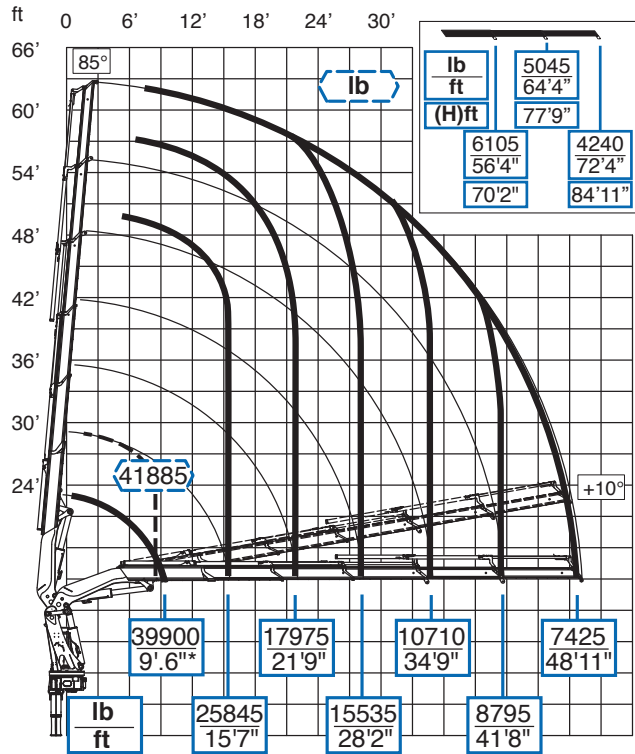
655

Effer 655 model is part of the big crane range, belonging to 30 to 300 txm lifting class, and is ideal for those who must work safely with heavy loads even in the most extreme situations. Big Effer cranes are the result of 50 years of passion and expertise. These cranes ensure outstanding performances and are characterized by a weight/capacity ratio among the best in the world.

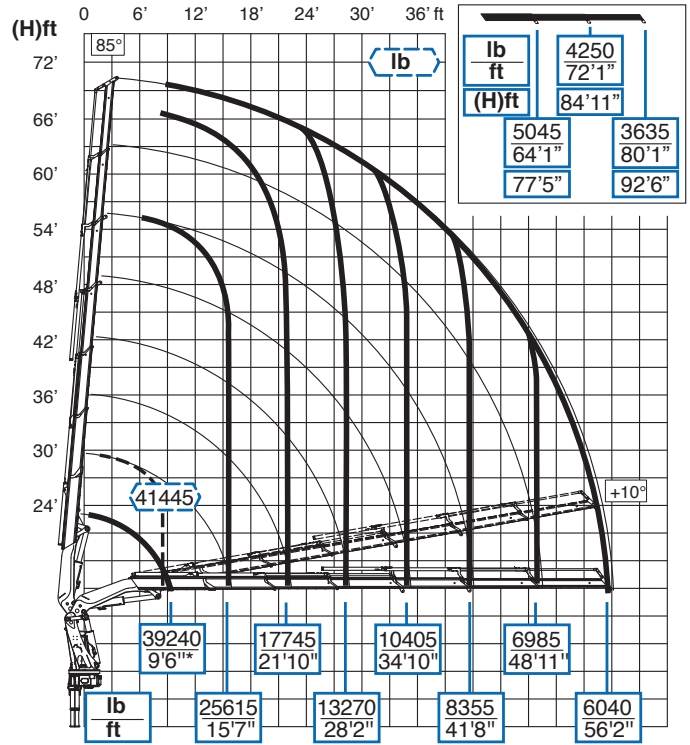


RECOMMENDED LOAD DIAGRAMS

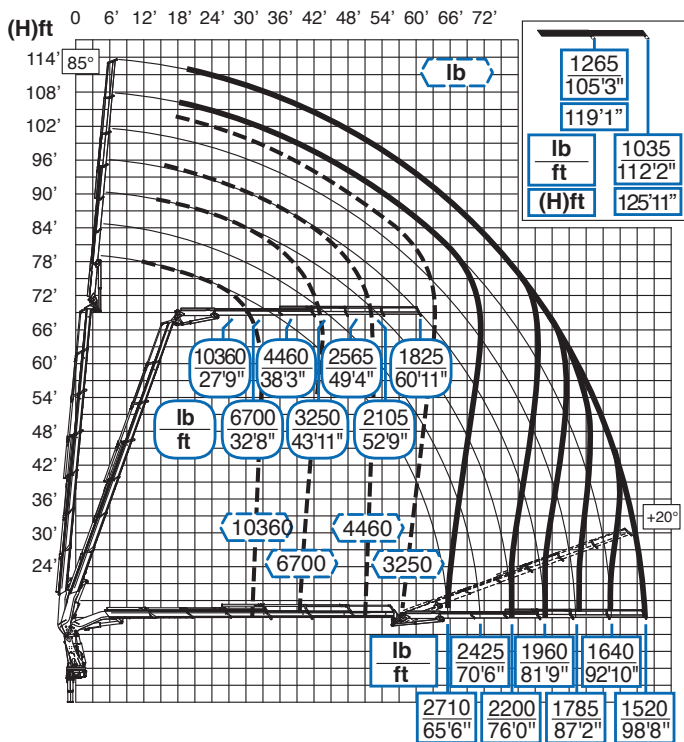
5S



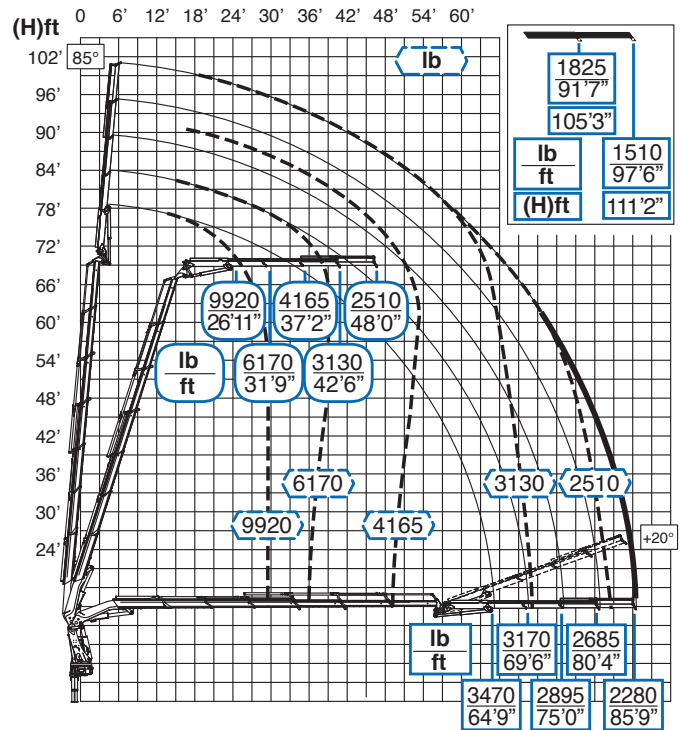
6S



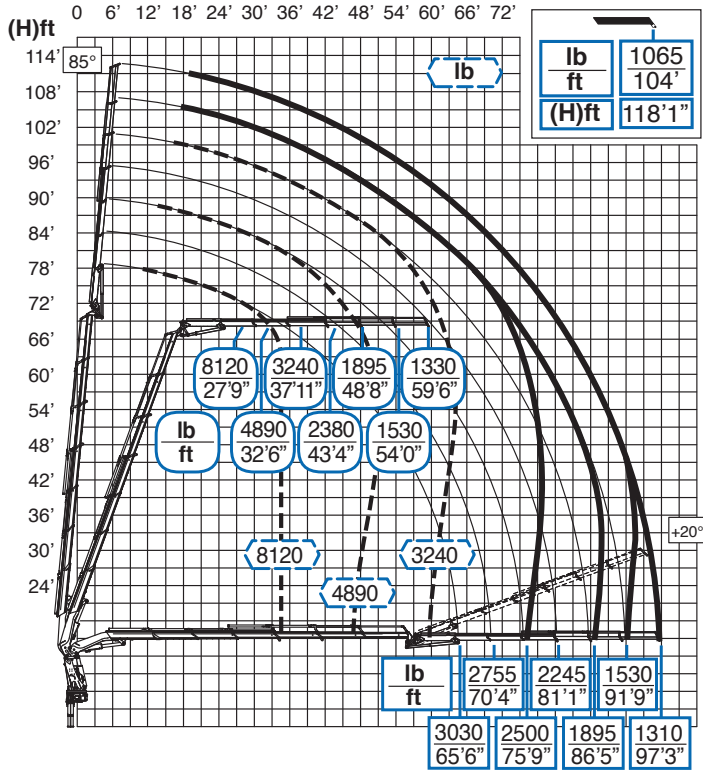
6S JIB 6S HEAVY DUTY



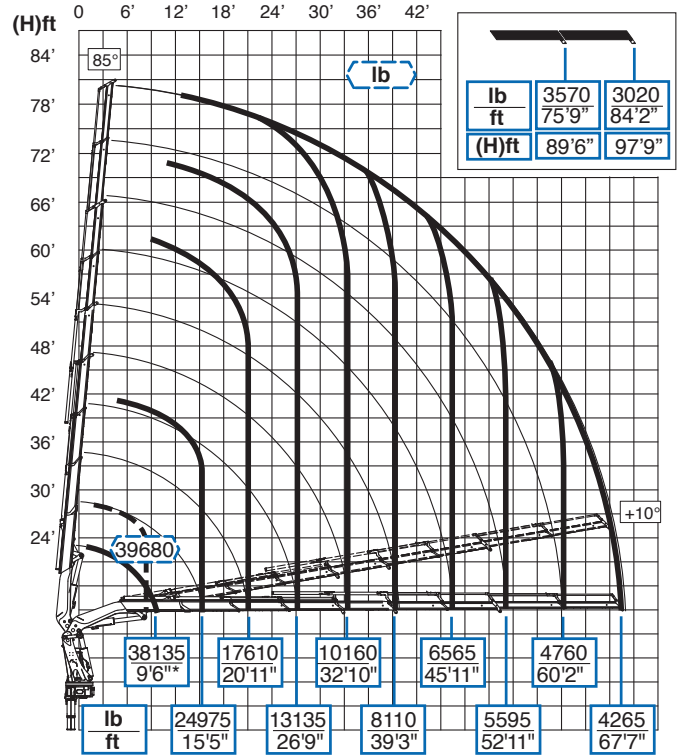
6S JIB 4S LIGHT



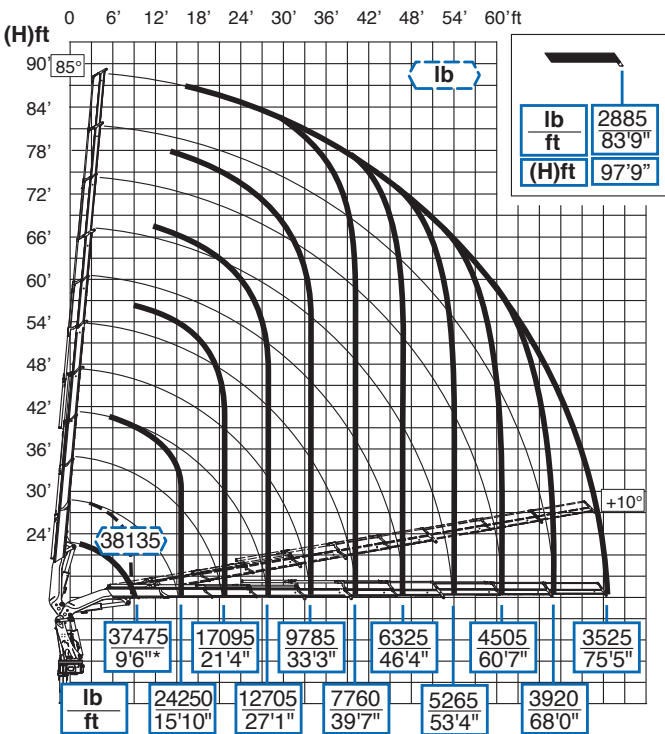
6S JIB 6S LIGHT



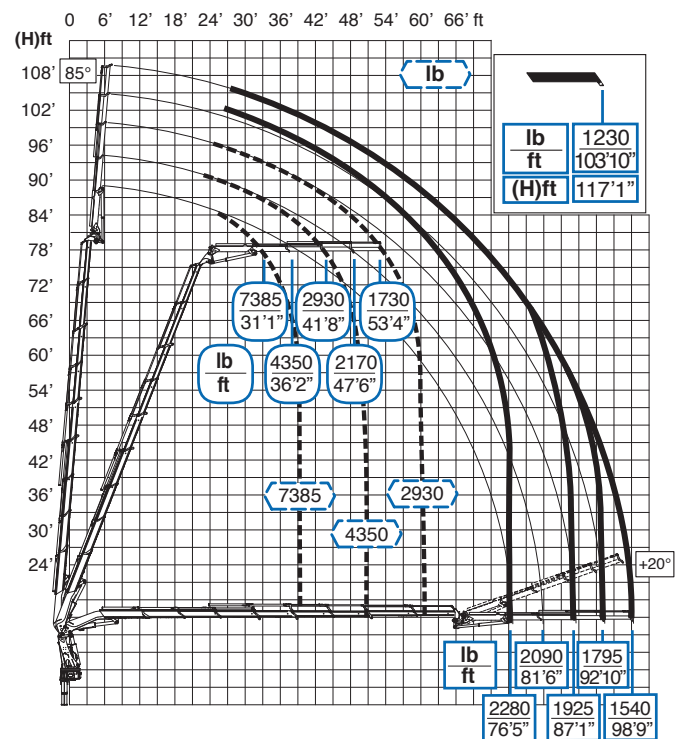
8S



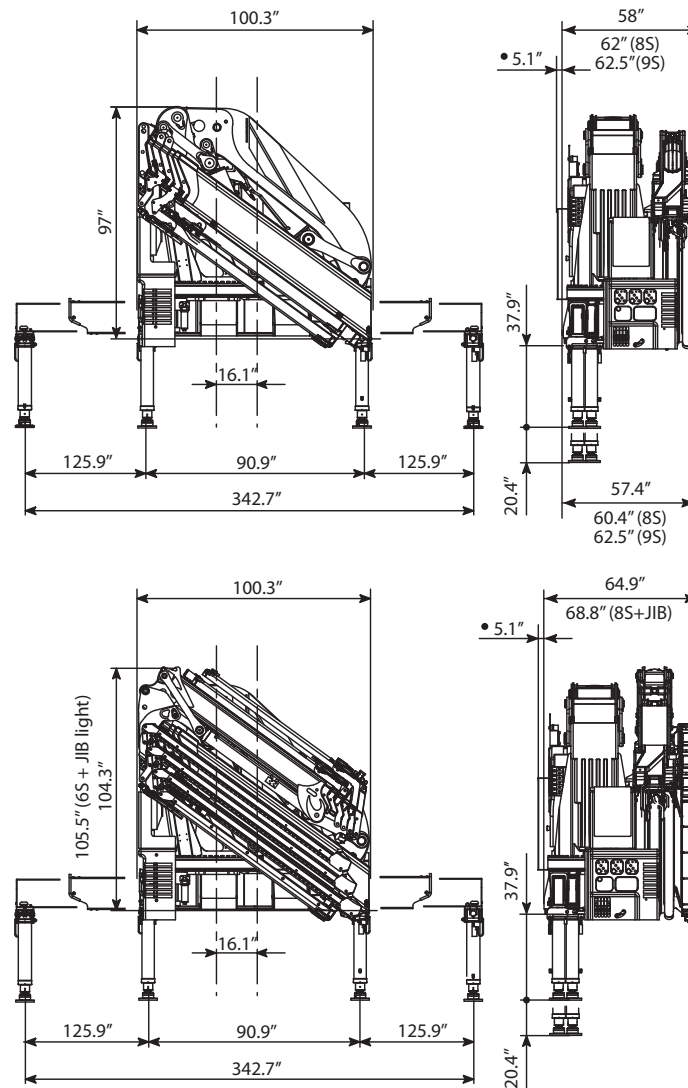
9S



8S JIB 4S



DIMENSIONS


















- Fitted tank size (optional, it fits within slewing dimensions)






PERFORMANCE

DESCRIPTION	UNIT OF MEASURE	2S	3S	4S	5S	6S	8S	9S
Max. hydraulic outreach	ft	27'9"	34'7"	41'9"	49'8"	56'11"	68'9"	76'6"
Max. lifting moment (+25°)	lb*ft	426050	413740	406910	402570	398100	386970	384850
Slewing arc	[°]	endless						
Slewing Capacity - Max slope	%	8.7						
Working pressure	p.s.i.	4786						
Max oil delivery	gpm	26.4						
Oil tank capacity	gal.	68						
Weight of the standard crane (± 2%)	lb	11770	12420	13095	13700	14325	15385	15860

STANDARD

-  Decagonal boom profile
-  Slewing ring and reduction gear unit
-  ETL (Effer Twin Links)
-  "Data Monitor Unit" Electronic crane control
-  "High Speed System" Increased speed of extension cylinders
-  "Pro.Dec. System" Cylinders with progressive stop at the end of their stroke
-  Oil cooler
-  Sequence valves
-  Outer boom articulating for more than 180°
-  Fly-jib articulating for more than 180°
-  Radio remote control with display
-  Stabilizers with hydraulic outlet
-  Swing-up stabilizers, manually activated
-  "Grip & Swing" Hook on bearing with cardan
-  ESS – Mini ESS (Effer Stability System)

OPTIONALS

-  Stabilizers with hydraulic outlet
-  "Wind & Drive" Crane foldable with the fly-jib on, without removing the winch components
-  Winch
-  H Version: base version for countries outside EU. For technical specifications ask to Effer Commercial Division
-  Radio remote for stabilizers



DISTRIBUTED BY  Altec.

ALTEC, INC.

33 Inverness Center Parkway
Birmingham, Alabama 35242
800.958.2555
sales@altec.com | altec.com/effe

