



provvisorio - temporary - provisoire - vorläufig - provisional

[PM 100 SP]^{pm} ESPRESSIONE DI POTENZA

100 SP

INTERNO
MONTABILE

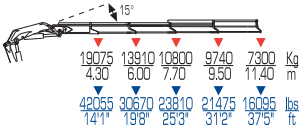


[elevate to the highest power]^{pm}

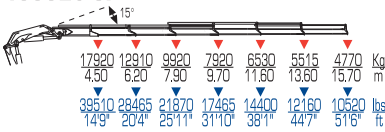
platinum



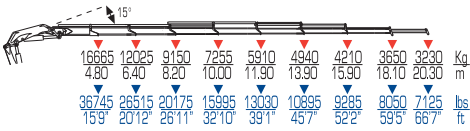
100024 SP



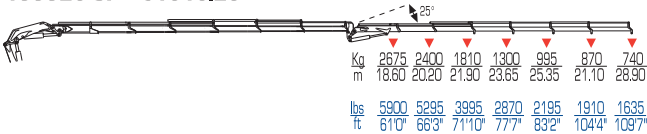
100026 SP



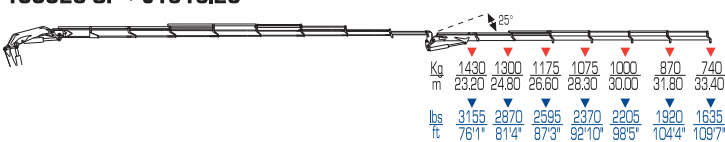
100028 SP



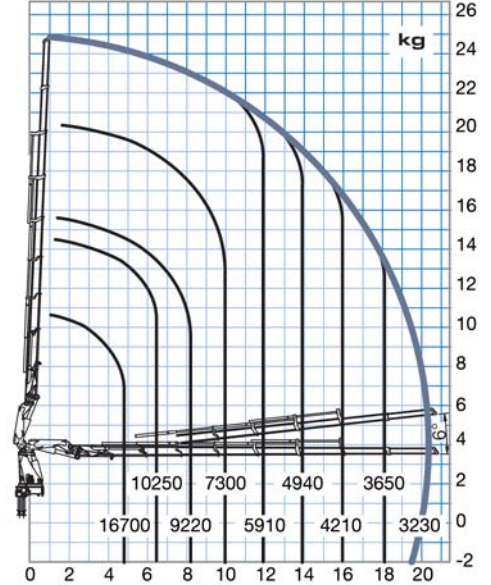
100026 SP + J1616.25



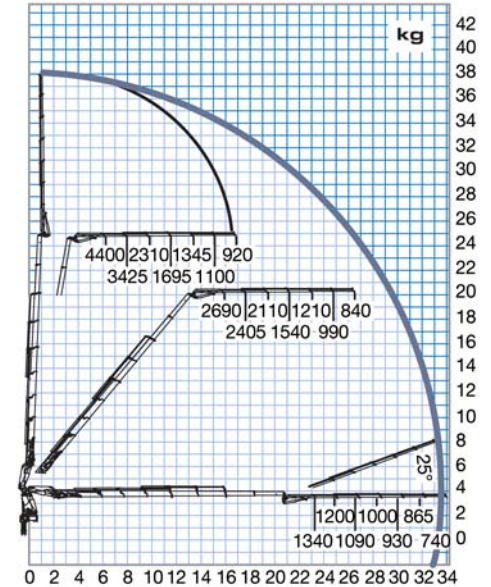
100028 SP + J1616.25



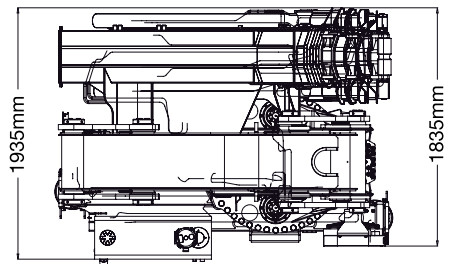
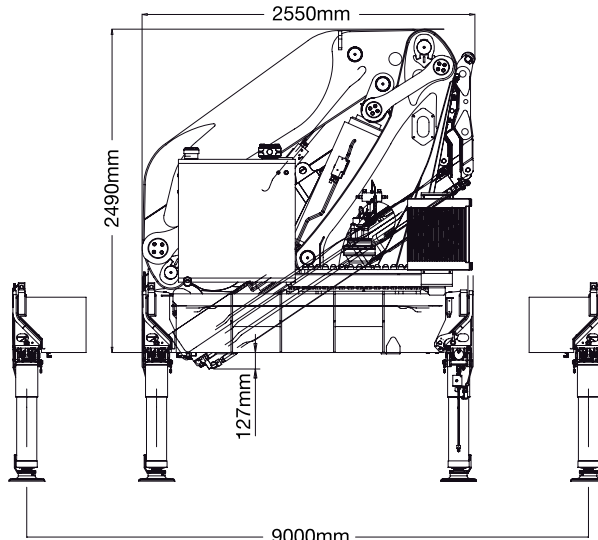
100028 SP



100028 SP + J1616.25



	tm	ft lbs	l/min	gals/min	Mpa	Psi		ST	ST	mm	ft	mm	ft	mm	ft
100024 SP	83	600340	120	32	35	5080	continuo	7615	16790	2550	8'4"	2490	8'2"	1735	5'8"
100026 SP	80	578640	120	32	35	5080	continuo	8300	18300	2550	8'4"	2490	8'2"	1835	6'0"
100028 SP	79,5	575020	120	32	35	5080	continuo - endlos	8900	19625	2550	8'4"	2490	8'2"	1835	6'0"
100026 SP + J1616.25	-	-	120	32	35	5080	continuo	9720	21430	2550	8'4"	2680	8'10"	1830	6'0"
100028 SP + J1616.25	-	-	120	32	35	5080	continuo	10340	22800	2550	8'4"	2690	8'10"	2005	6'7"



I dati tecnici possono essere aggiornati senza preavviso
 Technical data can be revised without prior notice
 Les données techniques peuvent être modifiées sans preavis
 Technische Änderungen vorbehalten
 Reservado el derecho de modificaciones



Year	2016
Manufacturer	PM
Model	100028SP
Hours	4,291
Serial Number	611600541505
Condition	Used
Stock Number	UT-659
Description	Used PM 100028SP knuckle boom crane installed on 2016 Western Star 4800 chassis Crane Specifications: • Max. lifting moment: 576,470 ft lbs • Hydraulic outreach horizontal: 67'3" • Hydraulic outreach vertical: 80'5" • Max. oil flow: 29 gals/min • 77 gal. oil tank capacity • Continuous slewing • Crane weight: 19,625 lbs. • 6 outriggers • Approx. hours: 4,291 Truck Specifications: • Detroit DD13 / 450hp engine • Engine brake: YES • DPF: YES • DEF: YES • Allison 4000RDS transmission – 6 speed • Rear end ratio: 4:89 • Full lockers: YES • Diff. lock: YES • Tandem axle • FA capacity: 20,000 lb. x 2 • RA capacity: 46,000 lb. • GVWR rating: 86,000 lb. • 272" wheelbase • Air ride suspension • 2 aluminum 80 gal. fuel tanks - diesel • Aluminum wheels • 385/65R/22.5 front tires • Air conditioning • Heated mirrors • Power windows • Cruise control • AM/FM radio • Dual high back seats • Approx. miles: 13,241

Truck Mounted

Truck Year	2016
Truck Manufacturer	WESTERN STAR
Truck Model	4800
VIN	5KKMBBDV5GPHC2477
Mileage	13,241 mi

Truck Engine

Engine Manufacturer	Detroit
Horsepower	450 hp
Turbo	Yes
Engine Brake	Yes

Fuel Type
Diesel

Truck Powertrain

Transmission
Automatic

Drive
4 WD

of Forward Speeds
6

Truck Specific

Suspension
Air Ride

Number of Rear Axles
Tandem

Wheelbase
272 in

Gross Vehicle Weight
86,000 lb

Front Axle GWR
40,000 lb

Rear Axle GWR
46,000 lb

Drive Side
Left Hand Drive

Wet Kit
Yes

Capacities

Lift Capacity
18.5 ton

Category Specific

Max Main Boom Length
80 ft

Outriggers
Yes

Number of Outriggers
6

Interior

A/C
Yes

A/C Condition

Good

Heater

Yes