

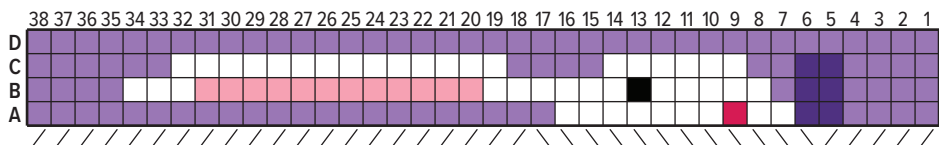
Bunny Band For Four-Shafts

BY NANCY CRAMPTON



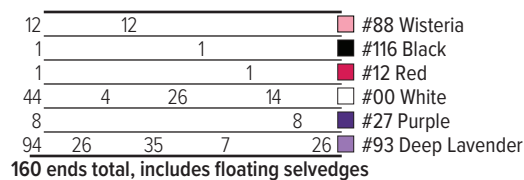
Refer to "Idea Gallery: Adapting Card-Weaving Patterns for Four-Shaft Looms", *Handwoven* September/October 2021, pages 22–24 for instructions to warp and weave this 4-shaft version of a Bunny Band. Nancy used UKI 5/2 pearl cotton in the colors listed.

1. CARD WEAVING DRAFT

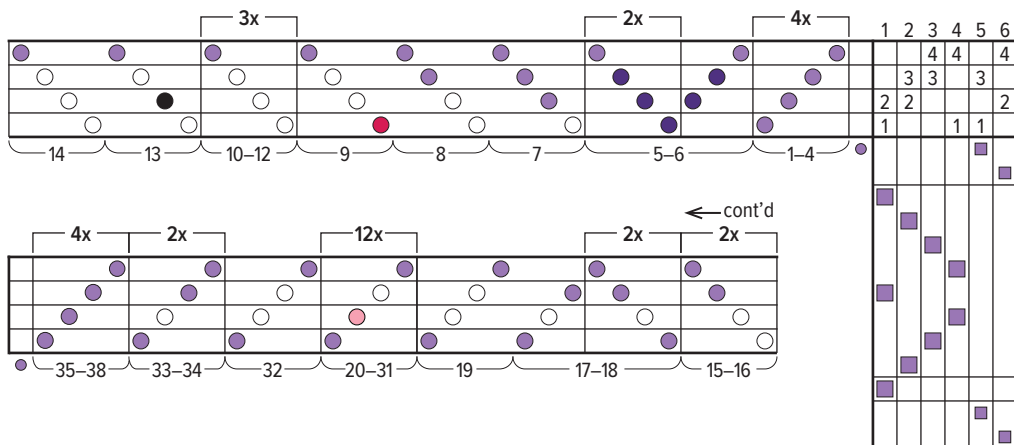


- / \ Cards threaded left or right as they come toward the weaver
- Wisteria
- Black
- Red
- White
- Purple
- Deep Lavender

2. GROUPED WARP COLOR ORDER



3. 4-SHAFT DRAFT



- floating selvage
- White
- Deep Lavender
- Purple
- Black
- Red
- Wisteria