



Hello Everyone and Welcome!

I am very excited to be one of your instructors this semester and help you move forward in your college career! What you need to know about me is that I am passionate about teaching. Specifically, I am passionate about teaching Economics. My goal is to help you create a rewarding learning experience in this class.

To that end, I enjoy getting to know my students individually and as a group. If you have a name that you prefer over the official roster name, please let me know. You can do it either via email, Canvas, or in person (although seeing it in writing helps me remember it best). And you are welcome to use my surname (Dr. Urmanbetova) when addressing me, or you can call me Dr. Aselia, or even Dr. U.

As you may already know, we will be using a **FREE textbook** -- yey! And all of the reading and other learning materials will be presented through Canvas. We also will be using a couple of apps / platforms for in-class and out-of-class activities that are incorporated into Canvas.

On the **first day** of class, please go to the first module: [Introduction and Setting Up All Accounts](#).

Also on the first day of class, please **fill out this survey**: [Getting to Know You and Your Needs](#) and **take this short Pre-test**. The survey has a bit more than a dozen of questions and should not take more than 10 minutes of your time. The survey is designed for your instructors to get to know you a little better, especially if there are any learning needs and accommodations that we may need to design given the remote learning / teaching context. The Pre-test will measure your understanding of macroeconomics concepts prior to any exposure to this course. The Pre-test is **optional** and is your first **Extra Credit** opportunity -- yey!!!

Below is your teaching team -- do not hesitate to reach out to us! The sure way to **get my attention** is to email **my GT email** aselia@gatech.edu. Please contact me as soon as you have any challenges so that we can work together to meet your needs! Thanks!!

Who should I email if I have a question about...

HWs, CPs, Moblabs, FREDcasts -- details on procedures, scheduling, etc.	Anisha
---	------------------------

Grades, points in Canvas, questions related to concepts	Nicole
---	------------------------

Making up MTs (see Course Description and Policies) to have your excuse documented, when emailing the TA copy aselia@gatech.edu , otherwise your make-ups will not be scheduled)	Cade
--	----------------------

Our Live Q&A, Piazza and Contact Info:

Optional	M	T	W	R	F
Live Coffee w/ Dr. U	10-10:50am	by appointment	10-10:50am	by appointment	by appointment
Live Chat w/ TA	1-2pm w/ Cade	by appointment	1-2pm w/ Nicole by appointment (i.e. <u>email first</u>)	by appointment	6-7pm w/ Anisha
Piazza Hours	6-7pm w/ Anisha	2-3pm w/ Nicole	1-2pm w/ Cade	2-3pm w/ Xiaoyu	

Note: See BlueJeans links below; if nobody shows up during first 15 mins, the Live Chats be closed.

Dr. Urmanbetova

Instructor of Record



aselia@gatech.edu

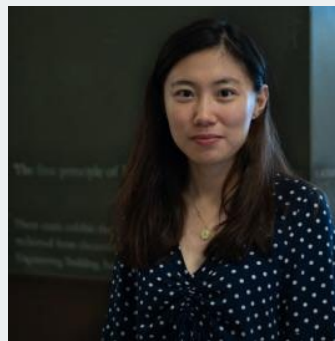
<https://bluejeans.com/3151187370/>

Office Hours by appointment, email to schedule

Phone: 404.894.4910, 678.431.5013

Xiaoyu Dong

Course GTA



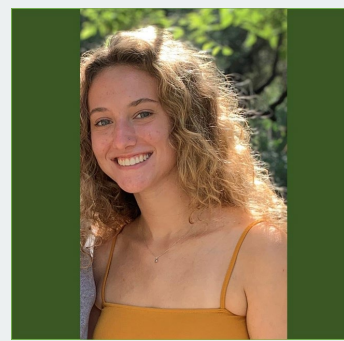
xydong@gatech.edu

Live Chat and Piazza Hours:
N/A

<https://bluejeans.com/4764689439>

Nicole Imhof

Course GTA



nicoleimhof@gatech.edu

Live Chat and Piazza Hours: see above

<https://gatech.bluejeans.com/9128911709>

Anisha Singh

Course TA



Cade Lawson

Course TA



Aiyanna Lowery

Past (not current) PLUS Leader



asingh704@gatech.edu	cade@gatech.edu	Request Tutoring Session with Aiyanna
Live Chat and Piazza Hours: see above	Live Chat and Piazza Hours: see above	Access Aiyanna's PLUS Materials for ECON 2105
https://gatech.bluejeans.com/548013045	https://bluejeans.com/9736583345	
<u>1</u>	<u>3345</u>	
Abbreviations:		
GTA: Graduate Teaching Assistant		
TA: Teaching Assistant		
TBA: To Be Announced		
OCE: Old Civil Engineering		
M: Monday		
T: Tuesday		
W: Wednesday		
R: Thursday		
F: Friday		

As I mentioned in the announcement, the course will be taught remotely, and I hope you'll enjoy learning all that is to learn in an Introductory Macroeconomics Course. All of our lectures, discussions, office visits, quizzes, homeworks and tests will be done **remotely** through our learning management system, Canvas. We will use BlueJeans for office hours, one-on-one check in meetings, and group sessions. But of course, I am happy to meet with you! Just email me and we will set up a time to speak on Teams, BlueJeans, or by phone.

We will be using in this course, which requires a login with your GT ID and password. Everything you need for this term can be found via Canvas, and please know you will be expected to visit the course site several times a week. For 24/7 assistance with Canvas, please contact the Canvas Help Desk at (877) 259-8498 or via email at support@instructure.com and one of the team members will respond to your needs.

This is an **asynchronous and flipped** class, so you are required to follow the schedule and participate in **pre-recorded** lectures and other online activities. Please remember that your remote learning requires discipline, self-motivation, collaboration, and organization. It also requires the same credit hours of work as a face-to-face course. Although there is greater flexibility for "when" you may complete coursework online, there are required submission **due dates**. Asynchronous online class participation is required and expected. You should expect to spend **between 6-9 hours per week** working and learning in the course, or **at least one hour of individual work to each credit hour per week**. Please plan your time accordingly. *If you think that 6-9 hours per week is too much, reconsider staying in this class. There will be other macro classes in the future and I am not the only one who is teaching that course!*

I am keeping the **schedule of a 3-day-per-week class**, i.e. you can **pretend as though you are supposed to get in the virtual class at MINIMUM three times a week** and get through at least **THREE class periods + individual work** (see the prev. paragraph). And we will follow the 3-day schedule for posting videos and activities -- **Mondays, Wednesdays, and Fridays** are our LUCKY DAYS!!! I also will be available for **LIVE CHATS (more accurately "quiz reviews")** every Monday and Wednesday (double-check the time in the main schedule), which I will **RECORD and POST** for those who can not make it in real time. So make sure to check those out!

Because our first LIVE CHAT falls on a holiday (Jan18) and **Jan15 is the first FRIDAY** of this semester, I will be available to anyone who has a minute to drop in and say HI at **10am at this link**: <https://bluejeans.com/3151187370/>. If you can't make it, do not sweat it, I will post the recording of our chats if anyone shows up! Additionally, it is important that you check and use your Canvas / Georgia Tech email account as

this is where all pertinent email information will be sent. If you need assistance with your GT email account, please contact the Technology Support at (404) 385-5555 or support@oit.gatech.edu. You can also visit the helpdesk at <http://services.gatech.edu> or gatech.service-now.com to submit a support request.

If you are in need, I will be available to you in a variety of ways:

- You may email me at aselias@gatech.edu,
- During Live Chats in Bluejeans (see Canvas pages for timing), and
- You may text me at 678.431.5013; if you need to talk on phone, please text me first as I may be in the meeting and not be able to respond, but via text we can quickly set up the time to talk.

Please be sure to identify your name and course with your question to ensure a timely response. I look forward to learning with you this semester!

On our first day of class please review the intro module -- [Introduction and Setting Up All Accounts](#), it will be published at 8am on the first day of class -- and two first assignments: (1) [Pre-test](#) and (2) [Getting to Know You and Your Needs](#) -- it is imperative that we all stay on schedule and hit the road running!

You also will be getting **three emails in the next 24 hours** -- from (1) St. Louis Federal Reserve to set up your FREDcast account, (2) Piazza, and (3) Moblab -- with the invitation to set up your accounts. Very excited to get to know you all!!!

Course Description

The purpose of this course is to introduce students to the basic concepts in economics with the focus on the aggregate behavior of markets, national economies, and international markets. We will cover such subjects as Gross Domestic Product (GDP), international trade, fiscal and monetary policy, aggregate demand and supply, or in short, macroeconomics. Most importantly, as a result of this course students will learn how to interpret economic indicators most widely used in the news media, how and if changes in these indicators warrant policy interventions, what kind of policies have been at the disposal of policy-makers in the past vs. the present, what theories support such policy actions and if these theories are backed by relevant empirical evidence. In short, by the end of the course I expect you to be able to make theoretically-sound and evidence-based arguments for and against various macroeconomic policies.

Student Learning Outcomes

Upon successful completion of the course, students will be able to:

1. Identify and interpret macroeconomic data.
 2. Apply macroeconomic models to understand the economy.
 3. Analyze the economic impacts of monetary and fiscal policy.
 4. Demonstrate an understanding of the function of the central bank and the banking system.
 5. Articulate evidence-based arguments on complex issues of international trade and foreign direct investments.
-

Course Modules and Teaching Methodology

The material for the course is grouped into five modules:

1. Introduction to Basic Economic Terms,
2. Introduction to Macroeconomic Indicators and Concepts,
3. Macroeconomic Theory,
4. Macroeconomic Policy Application and,
5. Open Macroeconomy and International Trade.

My teaching style is fairly hands-on and based on frequent recall methodology. I work on engaging you both in class and online using such discussion forum as Piazza and personal response systems and I ask that you practice your skills of retaining and applying new knowledge as frequently as possible. For that purpose, each of the five modules has its own set of learning activities and assessments. These activities include: supplementary video lessons, textbook readings, homework assignments and/or practice questions, online discussions, in-class/in-lecture polls and exercises, and tests.

Course SLS Affiliation

This course is part of Georgia Tech's Serve-Learn-Sustain (SLS) initiative. SLS works with all six colleges to offer student courses and other academic and extra-curricular opportunities that prepare them to work with diverse

collaborators - from the community, nonprofit, government, academic, and business sectors - to “create sustainable communities,” where humans and nature flourish, now and in the future. Class times and activities dedicated to the **SLS** theme are identified in the Syllabus Schedule.

More information about SLS can be found at www.serve-learn-sustain.gatech.edu. Visit the website to sign up for the [SLS Email List](#), learn about SLS’ [signature programs](#), and find links to Facebook, Instagram and Twitter. If you wonder “What is SLS?”, you can plan to visit with an advising session routinely conducted during regular academic year -- find specifics here: <https://serve-learn-sustain.gatech.edu/sls-academic-advising>.

For this course, each of the five modules will have one lecture / activity devoted to any of the UN 17 sustainable development goals. In addition, time permitting topics such as race, power, health, and equity will be addressed through the prism of the economic analysis.

Textbook and Other Resources

Great news: your textbook for this class is available for **free** online! This semester I am proud to present to you [a much cooler, updated version of this book that is interactive and has a ton of fun videos and helpful gadgets!](#) [The book chapters will be presented to you here directly in Canvas via Modules!](#)

Helpful Textbooks (not required): (1) Macroeconomics by Paul Krugman and Robin Wells, 4th edition; (2) Principles of Macroeconomics by Karl E. Case, Ray C. Fair, Sharon E. Oster, 12th edition; (3) Macroeconomics by Glenn R. Hubbard and Anthony P. O'Brien, 7th edition.

Online Learning Platforms

We will be using the following online platforms extensively:

- **Canvas:** All course materials and communications will be administered and managed via Canvas.
- **Piazza:** Piazza is integrated with Canvas and you can see a tab for which you can find in any of our Canvas pages. Gatech has an institutional license for Piazza and our students can use it free of charge.
- **Moblab:** Moblab is an independent platform designed for online economics games. Students must purchase a license for **\$5/student** (a huge discount Ivan Allen has negotiated with Moblab for our students!). You will need Moblab to earn participation points for this course.
- **FREDcast:** A new online gaming platform, designed to get students addicted to macroeconomic forecasting! Jokes aside, those who take time to outperform others, tend to keep playing well after the course is over. In order to play and get participation points for this class, you will need to open a free account and join the **proper FREDcast League**.
- **FRED:** FRED is an online interactive data depository, which you will be using extensively for your assignments. You do not have to create a FRED account to successfully create and submit charts, but it may be helpful to have an account -- you can save your work to be used for later submissions.

Introductory Module will walk you through how to set up accounts for Piazza, Moblab, FREDcast and FRED.

Course Policies

Remote Lecture Delivery and Communications

All lectures and activities for this course will be delivered in the **remote asynchronous mode**. **What does this mean?**

I will posting **prerecorded lectures** on the days during which I would have delivered them in person according to the course schedule. The lectures will be posted under Modules. Please note that the videos have been produced over a number of semesters -- **some videos will be brand new, some will be from this past spring and summer.**

To simulate the frequent recall teaching methodology that I use in the traditional class setting, I will be providing a few questions, called Class Participation questions, during the prerecorded lectures and I would expect for you to complete them in the online Canvas quiz, created for that lecture. These quizzes will be due on the dates indicated in the course schedule.

At the moment, I am planning to have **two guest speaker lectures delivered synchronously**, yet your synchronous attendance is not required. You are welcome to jump in on the talk to ask questions -- both speakers will be fun and interesting, that I promise you -- but we will be recording the lectures and you also will be able to watch them after the event.

In addition to our **weekly online discussions in Piazza** (see PEC in Syllabus: Assessments page and [Piazza Policies](#)) and to make sure that we are able to communicate as frequently as possible, I will be available synchronously in BlueJeans for Office Hours on the days identified on the [Course Homepage](#). I also will be relying on weekly announcements to alert you to deadlines and activities during the week. And as usual, if you need to get my immediate attention email me at aselja@gatech.edu.

Office Hours and Making Up Missed Class Policies

To make sure that everyone of you has a chance to interact with me, I will be holding office hours frequently either in BlueJeans -- I will be there waiting for you to stop by. When you decide to stop by, please shout so that I can hear that you are there!

Please note, test **makeup or re-scheduling of missed assignments will not be possible unless** you have a GT-approved excused absence or missed test. GT-approved excuses include:

- GT athletics (please submit the necessary paperwork as stipulated by your Athletic Manager as soon as possible),
- Disability Waiver (please schedule to see me to discuss this as soon as possible, do not wait till the 2nd or 3rd week of class; I am here to help the best I can!), and
- Documented by GT Health Center (see <https://health.gatech.edu/>) or the Dean of Students (see <https://studentlife.gatech.edu/content/get-help-now>) sickness or police-documented accident report.
 - To request excuse of absence approval from the Dean of Students, please go to <https://studentlife.gatech.edu/content/class-attendance> and click on "Request Assistance" -- the page should take you to an online form.

If you have the institute-approved excuse and documentation and you have to miss the assignment, you must schedule and take the **assignment within the five (5!) business days** after the original test date (unless there are serious extenuating circumstances).

In order to schedule a makeup assignment, you have to email me directly (at aselia@gatech.edu). Please note that failure to schedule and take the make-up assignment within the 5 days of the test date will result in zero points for that assignment without exceptions.

Working in Groups

You are encouraged to interact with other students outside the classroom to discuss the homework assignments. I also encourage you to work in groups during the online games, but you do not have to do so -- completely up to you!

Other Course Policies

Statement on Inclusion and Diversity

In articulating the values of the Georgia Institute of Technology, the Strategic Plan makes the following statement:

"We believe in and want to be known for having the following enduring values...: project a welcoming, inclusive culture; demonstrate mutual respect among faculty, staff, and students; celebrate uniqueness in thought, background, perspectives, and intellectual pursuits." (9)

The Ivan Allen College of Liberal Arts enthusiastically embraces these values. We take as inherent in all that we do that our policies and practices will demonstrate respect for all human beings, regardless of how those people may differ. The rights of all people to function with dignity are crucial, whether we are interacting within this vibrant intellectual community or with others across our streets and around the globe. We recognize that engendering a spirit of inclusiveness and respect and creating, thereby, a climate in which we can all thrive requires each of us to be socially conscious and culturally well-informed, and to operate with a keen sense of ethical responsibility.

Your Health

2020 will go down in history as a pivotal moment for our society. During the time of social and economic hardship, it is challenging to keep up with one's health routines. BUT your health is **extremely important** and I believe in taking responsibility for one's own health and practicing preventative healthcare routines, including those that are related to general emotional well-being and mental health. I encourage you to actively reach out to someone the moment you realize that you may need to get help. Our school has a number of facilities that may serve **as a start** on one's journey to a successful lifelong healthcare routine. Please go to course [Help / Support / Resources](#) to see the full list of resources available for you during this difficult time.

A quick personal note: as a GT alumna and someone who struggled with clinical depression while in school, I want to say to everyone who may need to hear this right now or any time during the semester -- I hear you and I see you, I am on your side, I will do my best to help you succeed in my course. Feel free to reach out to talk, I can't tell you what to do (since I am not a licensed therapist), but I can tell you my story -- you are not alone!

Necessary Accommodations

If you need accommodations for this course, please inform me and / or our class TA and contact the **Office of Disability Services (ODS)** (<https://disabilityservices.gatech.edu/>) early in the semester so that reasonable accommodations may be implemented as soon as possible. Students may contact the ODS by visiting the Center (located in Smithgall Student Services Building, Suite 123, 353 Ferst Drive, Atlanta, GA 30332-0285) or by phone (voice: 404-894-2563; TDD for deaf students: 404-894-1664; fax: 404-385-5429, or email: dsinfo@gatech.edu). All information will remain confidential. I have worked with students in the past to accommodate their testing needs individually and I welcome such accommodations (provided the paperwork, of course).

Our GT Honor

Each student has the responsibility to follow GT's Academic Honor Code of conduct and to help class colleagues do so. Cheating, plagiarism, and forgery of any kind **will not be tolerated under any circumstances (in particular during tests and quizzes)**. Any violation of the Institute's Honor Code will be reported to the Dean of Students **by default**, or as soon it is witnessed and documented. Please keep in mind that it is my professional duty to ensure a level playing field for all students. See <http://www.catalog.gatech.edu/policies/honor-code/> and / or <http://www.catalog.gatech.edu/rules/18/> for information on the Institute's Academic Honor Code.

Student-Faculty Expectations Agreement and Personal Responsibility

At Georgia Tech we strive to sustain the atmosphere of mutual respect, acknowledgement and responsibility between faculty and students. To see the Student-Faculty Expectations Agreement, please visit: <http://www.catalog.gatech.edu/rules/22/> for the list of expectations between you and your instructors. Kindly remember that you are responsible and accountable for understanding all of the guidelines, esp. submission deadlines, in this syllabus. So please be proactive in asking questions if you are not clear on any guidelines in a timely manner. And please remember that all aspects of the syllabus are subject to change if I believe the change is in the best interest of the overall class and will enhance the overall quality of the course and your learning experience.

Privacy Statement

The Family Educational Rights and Privacy Act (FERPA) is a federal law that requires colleges and universities to give students access to their education records and keep personally identifiable records confidential. All universities funded by the U.S. Department of Education are subject to FERPA. To learn more about how this law is upheld at Georgia Tech, see <http://www.registrar.gatech.edu/faculty/index.php>


Final Grade Structure and Policy

Please note that the information on this page is subject to change if I deem that the changes would improve the overall course flow and class performance.

Rounding

There will be no rounding, i.e. if a student gets 89.99 with all extra credits assigned at the end of the course, it is a B, just as a 79.99 is a C, and so on. The scale may be adjusted downward (i.e., a curve imposed), typically not by more than 3 points. Final grades are final; no grade adjustments will be made after the semester is over.

Canvas Grade

Because there is no way to properly use Extra Credit assignments in Canvas, I ask that you **ignore course grade calculated by Canvas** altogether as it can be misleading. Instead, please keep track of your individual assignment grades and points recorded in Canvas and **use the following worksheet** to stay updated on how you are doing: [ECON2105 Spring2021 Final Grade Calculator.xlsx](#) .

Final Grade

Your final grade will be based on all these activities and will be calculated as a weighted average of all learning activities according to the following weight distribution:

Assessment	Piazza Extra Credit	Additional Extra Credit	Scores
20% Homework (HW)	+ 0.5% PEC2	+ 0.5 % Pre-test + 0.5% Post-test	5 Homework Assignment Scores
10% Class Participation (CP)	+ 0.5% PEC3	+ 0.5% PEC1	5 Class Participation Scores (i.e. one for each module)
50% Midterm Tests (MT) + 0.5% PEC4		+ 1% if 85% of class complete the CIOS Survey	5 Midterm Test Scores
20% Final Test (FT)	+ 0.5% PEC5	+ 1% if 85% of class complete the Teaching Survey	5 PEC Scores

For each of the five modules, there is at least one type of assessment, i.e. Module 1 has HW1, CP1, MT1, and PEC1.

Midterms (MT) and Final (FT)

There will be five midterm tests given during the semester. The tests will occur on the dates specified in the course schedule. Given the cumulative nature of the material, the tests will be cumulative as well, but the emphasis will be placed on the material discussed during the lectures subsequent to the previous test. The test grades of the resulting four (with the lowest midterm dropped) midterms will be used to calculate 50% of the student's midterms average (MT average).

In addition to the five midterms, there will be a final, which will be cumulative and will account for the 20% of the final grade. Students can **opt not to take the final if and only if**: (a) the **average of all FIVE tests is 71 or higher**, **AND** (b) the **lowest score out of all FIVE tests is 51 or higher**, **AND** (c) you are happy using the **average of all FIVE your MT scores** being counted as your FT score.

So, either you commit to an A and opting out of the final from DAY1 or you suffer through the FINAL!!!

All tests will be online **open-book** tests, **BUT THEY WILL BE PROCTORED WITH HONORLOCK**. Prior to the first test, we will run a test quiz with the HONORLOCK to make sure that everyone can take it. Also, if you are a **MAC user**, please **DO NOT USE SAFARI** -- you will get into a serious issues with Canvas in SAFARI.

The following open-book test taking guidelines are designed for this course only. Please do not assume that all open-book test guidelines are the same. The purpose of an open-book test is to provide you with an opportunity to demonstrate how well you are able to synthesize and apply the new knowledge and skills. By definition, this means

going beyond simple definitions and memory recall. So please be prepared to be able to apply your knowledge while answering the questions.

Dos and Don'ts

Do:

- **Stay on the test tab** while taking the exam, do **NOT** veer away to other tabs -- Canvas logs all your activities, including when you leave the test tab,
- Consult downloaded and **printed** version of the textbook (download the [PDF file of the textbook](#)),
- Consult downloaded and **printed** PowerPoint Slides/Lectures,
- Consult downloaded and **printed** Lecture Notes (from the previous semester, download prior to test through Course Modules),
- Consult the **printed version** of your own class notes (in hard copy, not e-format),
- Use scrap paper, and
- Use a basic calculator.

Do Not Consult or Use Any of the Following:

- Any material in electronic format,
- Internet (Google, other search engines and websites),
- Practice Questions (PQs),
- Homework Assignments (HWs),
- In-class Quizzes (QZs) or Class Participation (CP) quizzes,
- Online textbook Review and Self-check Questions,
- Quizzlets,
- Piazza posts, and
- Other class assessment/participation materials that have been used or uploaded to Canvas and any other online platforms.

Why do I distinguish between printed or hard copy and e-media materials?

First of all, focusing on the essential materials in hard copy will incentivize you to start organizing your study and review process early. Limiting the choice of references will also help you eliminate the noise associated with "too many choices". Both limiting your choices and early organization will help you get ready sooner and feel more prepared. It is also a way for your instructors to identify those students who woefully ignore the open-book Honor Code protocol and heavily engage in looking up questions through online search engines. Such activity can be easily seen in student Canvas test logs which records the timing of all activities, including when students veer away from the test tab / browser.

Can we really know if anyone is cheating?

Absent online proctoring options, your instructors are faced with a really hard task to make sure that the playing field is even for each student and there are a number of strategies that teachers can use. One of them is to make your tests open-book, but much harder than the usual closed-book tests so that even if you can look things up, you simply won't even have time to find the right answer. I do not do very hard questions, but I do create randomized tests -- so everyone will be getting a unique test with different questions yet of the similar type and difficulty.

We also check student Canvas logs. Instructors and TAs can see the timing of your question completions and all related activities. While not perfect, this tool does help identify students who disregard the Honor Code

altogether. Please note that such behavior will be documented and reported directly to the Office of Student Integrity.

Class Participation, CP

Your class participation score will include points you will earn while (1) watching video lectures and completing accompanied online CP quizzes, (2) playing Moblab and (3) FREDcast games, all of which are scheduled ahead of time.

- Short Canvas quizzes (CP1.1, CP1.2, etc.) will be available on the day of class at 10am and you will have 48 hours to submit them. *NOTE: These CP questions are fully formulated in the VIDEOS, in Canvas CP quizzes you will just see a shell for each question! So please do not panic when you do not see the full question, just make sure to watch the VIDEO!!!*
- Moblab due dates will be identified in the schedule. You will have at least 48 hours to complete the games from the day / time of the games being opened. **Please note that Moblab games can NOT be reopened -- so if you miss them, you will forfeit your CP points associated with them.**
- Each FREDcast game is due on the 20th of each month. *NOTE: This deadline is set externally, i.e. NOT by me, so if you miss it, you miss it!*
- All three activities are graded on PARTICIPATION ONLY BUT (!!!) you MUST answer ALL questions and participate in ALL game rounds.

	Number of Lecture (CP Quiz) Points	Number of Moblab Game Points	Number of FREDcast Points	Total Points
CP1	CP1.1 - CP1.5 = 15 (drop 2, 1st week of class allowance)	10	FREDcast1: 10	35
CP2	CP2.1 - CP2.4 = 15 (drop 1)	20		35
CP3	CP3.1 - CP3.4 = 15 (drop 1)	10: two Games but play 1 of 2	FREDcast2: 10	35
CP4	CP4.1 - CP4.3 = 10 (drop 1)	20	FREDcast3: 10	30
CP5	CP5.1 - CP5.3 = 10 (drop 1)	10	FREDcast4: 10	40

Homework Assignments

For each of the five modules, there will be a homework assignment covering some, but not all of the material, of the on-going lectures. The homework questions on any given material will be assigned prior to the lecture in order to get students to start reviewing videos, reading the book, and thinking about the concepts prior to class. Please note, however, if a student is able to complete any given homework without reading all of the assigned chapter(s) or reviewing videos for that week, they should not expect to get the highest score on the test. In fact, the tests are designed to test not only the basic comprehension and retention of the material, but also **higher-order analytical and problem-solving skills**. Therefore, **students SHOULD NOT rely solely on memory if they are working towards an A in this course.**

Homework assignments will consist of mostly multiple choice questions with 1-7 graphing and short answer problems at the end of each HW. The short answer questions will ask you to use FRED or another online or stationary application in order to demonstrate your understanding of the economic concepts and theories covered in class. *Please note that this section of each HW tends to take a lot more time than multiple choice questions, so plan your time accordingly. Also note that each HW will have a different number of questions and, thus, will have a different relative weight.*

Piazza Extra Credit (PEC)

Finally, to facilitate student engagement, comprehension and further mastery of the material, the students will have the ability to participate in online discussions via Piazza. Discussions will have two overarching themes: **(1) course material** and **(2) classroom vs. newsroom**. Participation in both thematic discussions will count towards your module PEC scores. The two overarching discussion themes cover:

1. **All questions, issues, and concerns related to the course material and assignments.** Please note that the Piazza is the best place to get the fastest possible answer to any of the questions related to the course, material covered, and homework assignments. Before even thinking about writing an email to me and / or our TAs, please remember that today's snail mail is email. Unless you have a personal question related to your own performance and / or need to meet me and / or TAs in person to discuss your situation, you should not email. If you are not certain about homework assignment wording, you should post that question to the online discussion.
 - When posting questions about homework assignments or readings, please be as short and as specific as possible – i.e. always include the homework / chapter number, problem / page number and specific wording that is confusing or vague. **Importantly, students who know the answer are strongly encouraged to provide answers to the questions.** This helps our workload and provides a quick positive psychological boost to you for helping your fellow classmates, i.e. **win / win / win!!!**
2. In addition to the homework/material discussion, we will provide **links, prompts and references to other interesting information, data, news articles and video clips** that help understand how the concepts learned in class can be applied to analyze the current trends and policy discussions. Online discussions will be posted and monitored in Piazza via Canvas.

Earning PEC

1. In order to earn extra credit, you must contribute the **minimum of three (3) substantive comments / answers** to either one of the discussion themes for **each module**. **Please note that we will be downloading Piazza participation at 11:59pm on HW / CP / PEC due dates (see the course schedule).**
2. Note that "Thanks" or "When is the HW due?" do **not** constitute as a substantive comment / answer. A substantive comment should be of original and elaborate content. To read more on what a substantive comment means, please see this very useful and cute mini-presentation: https://prezi.com/_wash5nbwf6e/what-is-considered-a-substantive-response/.

Please make sure to utilize this resource completely – Piazza forum is added for your overall learning purposes and I expect for you to engage in debates and discussions with each other, whether the questions are on technical definitions of the course material / assignments or bigger policy debates. I will limit my participation only to those instances where I absolutely must weigh in, otherwise I expect for you to provide questions and informed arguments. Also note that you can set your comments to be anonymous to your classmates (not to me) and allow your opinions shine in their full glory! To register for Piazza properly, please see Intro Module: [Introduction and Setting Up All Accounts](#).

Practice Questions (ARE VERY IMPORTANT FOR YOUR TESTS!)

To provide as many practice opportunities as possible, I will also be providing a set of practice questions (PQs) for each module. Yet, please remember that these PQ assignments will NOT be counted towards your grade.

Due Dates (ARE NON-NEGOTIABLE)

HWs, PQs PECs will be made available through Canvas shortly before the first lecture on the weekly material and should be submitted only through Canvas at **11:59m one day before the test day** (identified in the course schedule). Class Participation quizzes and Moblab games will be assigned on the day of the lectures and will be due **also at 11:59pm on the day before test**. Assignments submitted past their respective deadlines will result in 0 grade and will be locked (inaccessible) for review for the rest of the semester.

Given the amount of time to complete HW, PEC, CP assignments, **technology glitches** (e.g. internet goes down for a few hours, computer crashes) are **not a valid reason for turning in assignments late**. If you have technical problems submitting your homework assignments, please follow the instructions on how to contact Canvas Technical Support team listed under [Help](#).

Course Schedule

Please note that the specific dates for assessments and activities are subject to change if I deem that the changes would improve the overall course flow and class performance.

FT	Final Test	SLS	Serve Learn Sustain
HW	Homework	Live Chat/Coffee w/ Dr. U	10-10:50am on Ms and Ws, if nobody shows up by 10:15am, session will automatically close down for that day!
CP	Class Participation: points earned with CP Quizzes, Moblab, FREDcast	Moblab#	Each Moblab game assignment will have video and PowerPoint instructions on how to play games and what to expect
MT	Midterm Test	FREDcast#	Each FREDcast game has to be submitted on the 20th day of each month
ML	Module Lecture	TAR	TA-Facilitated Midterm Review
PQ	Practice Questions	PEC	Piazza Extra Credit

Online Delivery: all events and assessments are scheduled for the **Eastern Standard Time**

Date	Weekday	Module Lecture	Lecture Description, Link to Live/Recorded Meet	Start Working On	What's Due (11:59pm)	Video Lectures	Mins
Module0	Introduction and Setting Up All Accounts -- Activities and Assessments will be added/updated during the course of lecturing						
Jan 15	Fri	ML1.1	Introductory Lecture	Set-up Moblab, Piazza, FRED, FREDcast	Pre-test, Getting To Know You Survey	Review each page in Module0 to get acquainted with the course!	
			Recorded Jan15 Meet	CP1.1, FREDcast 1		Video Lecture ML1.1 Introduction Tips for Success	35
Jan 18	Mon		MLK DAY	NO CLASSES		WOOHOO!!!	
Module1	Basic Economic Concepts, Chapters 1-4 Please note that some dates may change due to unforeseen circumstances and/or if I believe the changes are for the benefit of the overall course.						
Jan 20	Wed	ML1.1	Recorded Jan20 Meet	CP1.2	CP1.1, FREDcast1 Due Jan20	Video Lecture ML1.1 FREDcasting Made Easy	22
		ML1.2	Chapter 1			Video Lecture ML1.2 Chapter 1	37
Jan 22	Fri	ML1.2	Chapter 2			Video Lecture ML1.2 Chapter 2	47

Jan 25	Mon	ML1.3	Chapter 3	CP1.3, Moblab Game1	CP1.2 Due	Video Lecture ML1.3 Chapter 3 Part 1 Demand	19
			Recorded Jan25 CP Review: Ch2 and Ch3			Video Lecture ML1.3 Chapter 3 Part 2 Supply and Equilibrium	21
						Video Lecture ML1.3 Chapter 3 Part 3 Comparative Statics	19
Jan 27	Wed	ML1.4	Chapter 4	CP1.4 and CP1.5	CP1.3 Due	Video Lecture ML1.4 Chapter 4 Part 1 Labor Market Basics	17
			Recorded Jan 27 CP1.4 and Ch3-4			Video Lecture ML1.4 Chapter 4 Part 2 Comparative Statics	15
						Video Lecture ML1.4 Chapter 4 Part 3 Labor Market Policies	14
Jan 29	Fri	ML1.4	Chapter 4		CP1.4 Due	Video Lecture ML1.4 Chapter 4 Part 4 Financial Markets Intro	15
						Video Lecture ML1.4 Chapter 4 Part 5 Financial Markets Shifters	15
Feb 1	Mon	ML1.5	Economics of Poverty, Recorded Feb1 Meeting: More Practice Questions		Moblab Game1 Due	SLS: Addressing Poverty w/ Behavioral Economics	58, skim through
		TAR1	TA-led Review for MT1	Practice HonorLock Quiz before taking MT1!!!	CP1.5, HW1, PEC1 Due Feb 2 at 11:59pm	Lead by Nicole Imhof, https://gatech.bluejeans.com/9128911709 , Time: 7 - 8 pm est	
Feb 3	Wed	MT1	Midterm Test 1, Recorded Feb 3 Office Hour	Test: MT1		Duration: 50 mins, Time Window: Feb3 12pm to Feb4 11:59pm	
Module2 Macroeconomic Concepts, Chapters 5, 7, 8 (Note: Ch5, 7, 8 are formerly Chapters 6, 8, 9 in the original Openstax Textbook, i.e. in the Adobe version, etc.)							
Feb 5	Fri	ML2.1	Chapter 5 (former Ch6)	CP2.1		Video Lecture ML2.1 Chapter 6 Part 1 Introduction to GDP	20
		ML2.1				Video Lecture ML2.1 Chapter 6 Part 2 Measuring GDP	17

		ML2.1				Video Lecture ML2.1 Chapter 6 Part 3 Expenditure Approach	19
Feb 8	Mon	ML2.1	Recorded Feb8: So BORING, So Sorry, Better Next Time!	Moblab Game2		Video Lecture ML2.1 Chapter 6 Part 4 Income Approach	11
		ML2.1				Video Lecture ML2.1 Chapter 6 Part 5 Nominal Vs. Real 1	16
		ML2.1				Video Lecture ML2.1 Chapter 6 Part 5 Nominal Vs. Real 2	11
		ML2.1				Video Lecture ML2.1 Chapter 6 Part 6 Problems with GDP	16
		ML2.1	SLS: Green GDP - Optional	CP2.4 (Green GDP)		Video Lecture ML2.1 Chapter 6 Part 7 Green GDP	17
		ML2.1				Video Lecture ML2.2 Chapter 6 Part 8 Addtl Practice Questions	7
Feb 10	Wed	ML2.2	Chapter 7 (former Ch8), Recorded Feb10: CP2.1	CP2.2	CP2.1 Due	Video Lecture ML2.2 Chapter 8 Part 1 Introduction	21
		ML2.2				Video Lecture ML2.2 Chapter 8 Part 2 Defining Unemployment	21
Feb 12	Fri	ML2.2				Video Lecture ML2.2 Chapter 8 Part 3 Theoretical Deliberations	16
		ML2.2				Video Lecture ML2.2 Chapter 8 Part 4 Theoretical Deliberations Cont'd	18
Feb 15	Mon	ML2.3	Chapter 8 (former Ch9), Recorded Feb15: CP2.2	CP2.3, Moblab Game3	CP2.2, CP2.4, Moblab Game2 Due	Video Lecture ML2.3 Chapter 9 Part 1 Introduction	17
		ML2.3				Video Lecture ML2.3 Chapter 9 Part 2 Calculating Inflation	23
Feb 17	Wed	ML2.3	Recorded Feb17: CP2.3			Video Lecture ML2.3 Chapter 9 Part 3 Inflation Considerations	16
		ML2.3				Video Lecture ML2.3 Chapter 9 Part 4 Applications	26

		TAR2	TA-led Review for MT2			Lead by Cade Lawson, https://bluejeans.com/9736583345 , Time: 7-8pm	
Feb 18					CP2.3 , Moblab Game3 , HW2 , PEC2 Due		
Feb 19	Fri	MT2	11am Coffee w/ Dr. U , Midterm Test 2	Test: MT2	FREDcast2 Due Feb 20	Duration: 50 mins, Time Window: Feb19 12pm to Feb20 11:59pm	
Module3	Major Macroeconomic Theories, Chapters 9-12 (former Appendix B, Chapters 11-13); download ML3.2 KCross.xls for HW3						
Feb 22	Mon	ML3.1	Chapter 9 (former AppB) , Recorded Feb22 Module3 Review	Moblab Game4 and CP3.1		Video Lecture ML3.1 Appendix B, Part 1, Introduction	21
		ML3.1				Video Lecture ML3.1 Appendix B, Part 2, 45-Degree Line	14
		ML3.1				Video Lecture ML3.1 Appendix B, Part 3, Consumption Function	14
Feb 24	Wed	ML3.1	Recorded Feb24: CP3.1			Video Lecture ML3.1 Appendix B, Part 4, Keynesian Cross	15
		ML3.1				Video Lecture ML3.1 Appendix B, Part 5, Role of Inventories	11
		ML3.1				Video Lecture ML3.1 Appendix B, Part 6, Expenditure Determinants A	17
		ML3.1				Video Lecture ML3.1 Appendix B, Part 6, Expenditure Determinants B	13
Feb 26	Fri	ML3.1				Video Lecture ML3.1 Appendix B, Part 7, Multiplier	18
		ML3.1				Video Lecture ML3.1 Appendix B, Part 8, Savings-Investments, Aggr Demand	20
		ML3.1			Moblab Game4 and CP3.1 Due	Video Lecture ML3.1 Appendix B, Part 9, Algebra and KCross in Excel	19

Mar 01	Mon	ML3.2	Chapter 10 (former Ch11), Recorded Mar1: CP3.1, Started CP3.2	CP3.2		Video Lecture ML3.2 Chapter 11, Part 1, Introduction	18
		ML3.2				Video Lecture ML3.2 Chapter 11, Part 2, Aggregate Demand Overview	14
		ML3.2		START WORKIN G ON THAT HW!!!		Video Lecture ML3.2 Chapter 11, Part 3, Aggregate Demand Shape and Shifters	17
Mar 03	Wed	ML3.2	Recorded Mar3: CP3.2	IT WILL BE A DOOZY HW3		Video Lecture ML3.2 Chapter 11, Part 4, Aggregate Demand Shifters	15
		ML3.2				Video Lecture ML3.2 Chapter 11, Part 5, Aggregate Supply Overview	15
		ML3.2	"How Goes It?"	Mid- semester Anonymo us Survey		Video Lecture ML3.2 Chapter 11, Part 6, Aggregate Supply Shifters	15
Mar 05	Fri	ML3.2		Review THIS NOW!!!		Video Lecture ML3.2 Chapter 11, Part 7, Comparative Statics	18
		ML3.2			CP3.2 Due	Video Lecture ML3.2 Chapter 11, Part 8, Dynamic Model	19
		ML3.3	Chapters 11-12 (former Ch12-13)	CP 3.3		Video Lecture ML3.3 Chapters 12-13, Part 1, Introduction	18
Mar 08	Mon	ML3.3	Recorded Mar8 CP3.3	Moblab Game5		Video Lecture ML3.3 Chapters 12-13, Part 2, Keynesian	14
		ML3.3				Video Lecture ML3.3 Chapters 12-13, Part 3, Classical	14
		ML3.3				Video Lecture ML3.3 Chapters 12-13, Part 4, Both Laws Needed	10
Mar 10	Wed	ML3.3	Recorded Mar10 Your Study Habits and MT1, MT2 Scores			Video Lecture ML3.3 Chapters 12-13, Part 5. SR Phillips Curve	20
		ML3.3			CP3.3 Due	Video Lecture ML3.3 Chapters 12-13, Part 6. LR Phillips Curve	23

		TAR3	TA-led Review for MT3			Lead by Nicole Imhof, https://gatech.bluejeans.com/9128911709 , Time: 7-8 pm	
Mar 12	Fri	ML3.4	SLS: Covid Econ -- Optional	CP3.4		Video Lecture ML3.4 Covid Economics, Part 1 Introduction	13
		ML3.4			Moblab Game5 Due	Video Lecture ML3.4 Covid Economics, Part 3 Economic Impact	12
		ML3.4				Video Lecture ML3.4 Covid Economics, Part 5 Macro of Epidemics	17
		ML3.4				Video Lecture ML3.4 Covid Economics, Part 6, Cares Act	15
		ML3.4				Video Lecture ML3.4 Covid Economics, Part 7 Wrapping Up	17
		ML3.4			CP3.4 Due	The Unemployment Rate Will Understate the Impact of Coronavirus	2
					HW3, PEC3 Due		
Mar 15	Mon	MT3	10am Coffee w/ Dr. U , Midterm Test 3	Test: MT3		Duration: 50 mins, Time Window: Mar15 12pm to Mar18 11:59pm	
Module4 Macroeconomic Policy Applications, Chapters 13-16 (former Chapters 14-15, 17-18)							
Mar 17	Wed		10AM: Fed Guest Speaker	William Princeton, CP4.3			
Mar 19	Fri	ML4.1	Chapter 13 (former Ch14)	Moblab Game and CP4.1	FREDcast3 Due Mar20	Video Lecture ML4.1 Chapter 14, Part 1 Defining Money	19
		ML4.1				Video Lecture ML4.1 Chapter 14, Part 2 Role of Banks	10
		ML4.1				Video Lecture ML4.1 Chapter 14, Part 3 Creating Money	19
Mar 22	Mon	ML4.1	Chapter 14 (former Ch15), 10am Coffee w/ Dr. U , Review CP4.1, CP 4.3			Video Lecture ML4.1 Chapter 15, Part 1 Federal Reserve System	14
		ML4.1				Video Lecture ML4.1 Chapter 15, Part 2 Traditional Tools	27

		ML4.1				Video Lecture ML4.1 Chapter 15, Part 3 Financial Crisis	15
Mar 24	Wed		No Class				
Mar 26	Fri	ML4.1			Moblab Game, CP4.1, and CP4.3 Due	Video Lecture ML4.1 Chapter 15, Part 4 Post-Crisis Tools	16
		ML4.1		Textbook Survey		Video Lecture ML4.1 Chapter 15, Part 5 Monetarism	9
		ML4.2	Chapter 15 (former Ch17)	CP4.2		Video Lecture ML4.2 Chapter 17, SPRING 2020, Part 1 Video 1	21
Mar 29	Mon	ML4.2	10am Coffee w/ Dr. U , Review CP4.2	Moblab Game		Video Lecture ML4.2 Chapter 17, SPRING 2020, Part 1 Video 2	31
		ML4.2	Chapters 15-16 (former Ch17-18)			Video Lecture ML4.2 Chapters 17-18, SPRING 2020, Part 2 Video 1	29
Mar 31	Wed	ML4.2	10am Coffee w/ Dr. U			Video Lecture ML4.2 Chapters 17-18, SPRING 2020, Part 2 Video 2	20
		ML4.2				Video Lecture ML4.2 Chapters 17-18, SPRING 2020, Part 2 Video 3	26
		ML4.2			Moblab Game and CP4.2 Due	Video Lecture ML4.2 Chapters 17-18, SPRING 2020, Part 2 Video 4	2
Apr 02	Fri	ML5.4	SLS: Economics of Race - Optional	CP5.4	CP4.3. Due	Video Lecture ML5.4 SLS Economics of Race	
		TAR4	TA-led Review for MT4		HW4, PEC4, CP5.4 Due	Lead by Cade Lawson, https://bluejeans.com/9736583345 , Time: 7-8pm	
Apr 05	Mon	MT4	10am Coffee w/ Dr. U , Midterm Test 4	Test: MT4		Duration: 60 mins, Time Window: Apr5 12pm to Apr6 11:59pm	
Module5	Open Macroeconomy, Second Part of Chapter 16, Chapters 17-18, 20-21 (former Chapters 16, Second Part of 18, 10, 20-21)						
Apr 07	Wed	ML5.1	Chapter 18 (former Ch16), 10am Coffee w/ Dr. U	Moblab Game, CP5.1		Video Lecture ML5.1 Chapter 16, Part 1 Exchange Markets	24

		ML5.1				Video Lecture ML5.1 Chapter 16, Part 2 Exchange Market Shifters	19
Apr 09	Fri	ML5.1				Video Lecture ML5.1 Chapter 16, Part 3 PPP	17
		ML5.1				Video Lecture ML5.1 Chapter 16, Part 4 Exchange Market Regulation	20
Apr 12	Mon	ML5.2	2nd part of Chapter 16, Chapter 17 (former 2nd part of Ch18 and Ch10), 10am Coffee w/ Dr. U , Review CP5.1	CP5.2		Video Lecture ML5.2 Chapters 10 and 18, Part 1 Current Account	23
		ML5.2				Video Lecture ML5.2 Chapters 10 and 18, Part 2 Capital Acnt, Bal of Payments	24
Apr 14	Wed	ML5.2	10am Coffee w/ Dr. U , Review CP5.2		CP5.1 Due	Video Lecture ML5.2 Chapters 10 and 18, Part 3 Twin Deficits	20
		ML5.3	Chapters 20-21	CP5.3		Video Lecture ML5.3 Chapters 20-21 Part 1 Mutual Absolute Advantage	17
Apr 16	Fri	ML5.3				Video Lecture ML5.3 Chapters 20-21 Part 2 Comparative Advantage	20
		ML5.3		Teaching Survey Open	CP5.2, Moblab Game Due	Video Lecture ML5.3 Chapters 20-21 Part 3 Benefits from Trade	25
Apr 19	Mon	ML5.3	10am Coffee w/ Dr. U , Review CP5.3	Wednesday Wellness Survey		Video Lecture ML5.3 Chapters 20-21 Part 4 Trade Regulation	16
		ML5.3			FREDcast4 Due Apr20	Video Lecture ML5.3 Chapters 20-21 Part 5 Protectionism Arguments	14
Apr 21	Wed		Catching up, 10am Coffee w/ Dr. U				
		TAR5	TA-led Review for MT5			Lead by Nicole Imhof , https://gatech.bluejeans.com/9128911709 , Time: 7-8 pm	

					HW5, PEC5, CP5.3 Due	Live Office Hour w/ Dr. U at ## EST	
Apr 23	Fri	MT5	<u>10am</u> <u>Coffee w/</u> <u>Dr. U,</u> Midterm Test 5	<u>Test: MT5</u>		Duration: 60 mins, Time Window: Apr23 12pm to Apr24 11:59pm	
Module6	Review						
Apr 26	Mon	ML6.1	Final Review & Farewell			Review and Adieu	
Apr 29	Thur	FT	Final Test	<u>Test: FT</u>		Duration: 170 mins, Time Window: Apr29 12pm to Apr30 11:59pm	