



For Children Turning  
**5 Years Old**  
by August 1, 2021



**Register now for kindergarten!**

## Why is kindergarten registration important?

Kindergarten is an important step to your child's success in life. That's why it's so important to register during the early application period.

- It guarantees your child has a spot for the first day of school.
- It provides the school with your contact information so you can receive important information before the first day of school, such as supply lists and helpful hints.
- It's an important step that helps your child successfully transition to kindergarten, helping you, your child, and the school all be as prepared as possible on day one.



## When to Register

Enrollment for the 2021-22 school year (beginning in **August of 2021**) is **November 2 through December 16, 2020**.



# Kindergarten registration and application are easy!

You will need the following to register your child:

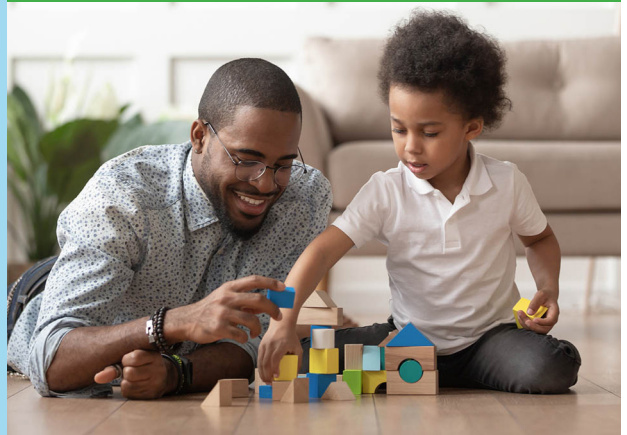
- A photo ID (e.g., driver's license, student ID)
- Proof of address (e.g., LG&E bill, water bill, paycheck stub, lease/housing contract, government-issued document)

Important things to know:

- You can register online at [www.jefferson.kyschools.us](http://www.jefferson.kyschools.us).
- You can register and apply to enroll your child in school regardless of immigration status, if you might move, or if you live in temporary housing.
- When you register, you get connected to a school and a Family Resource Center (FRC) so you can ask questions and have access to school supplies and other resources to help your child succeed.
- Rank the schools within your cluster, and choose up to two optional/magnet programs or schools. All incoming kindergarten students have to apply to receive a school assignment for the 2021-22 school year.



**Register now!  
November 2–  
December 16,  
2020**



## Ways to Register

1. **Online**—<https://jcps.me/parent>
2. **In Person**—Schedule an appointment at the JCPS 360° Student Family & Support Center at Humana by visiting <https://signup.com/go/pNsoYzt>.
3. **By Phone**—Call the JCPS Parent Assistance Center at **485-6250**.



[www.jefferson.kyschools.us](http://www.jefferson.kyschools.us)  
Equal Opportunity/Affirmative Action Employer Offering  
Equal Educational Opportunities  
69951 Student Assignment—Ready For K Flier 10/20 DH

