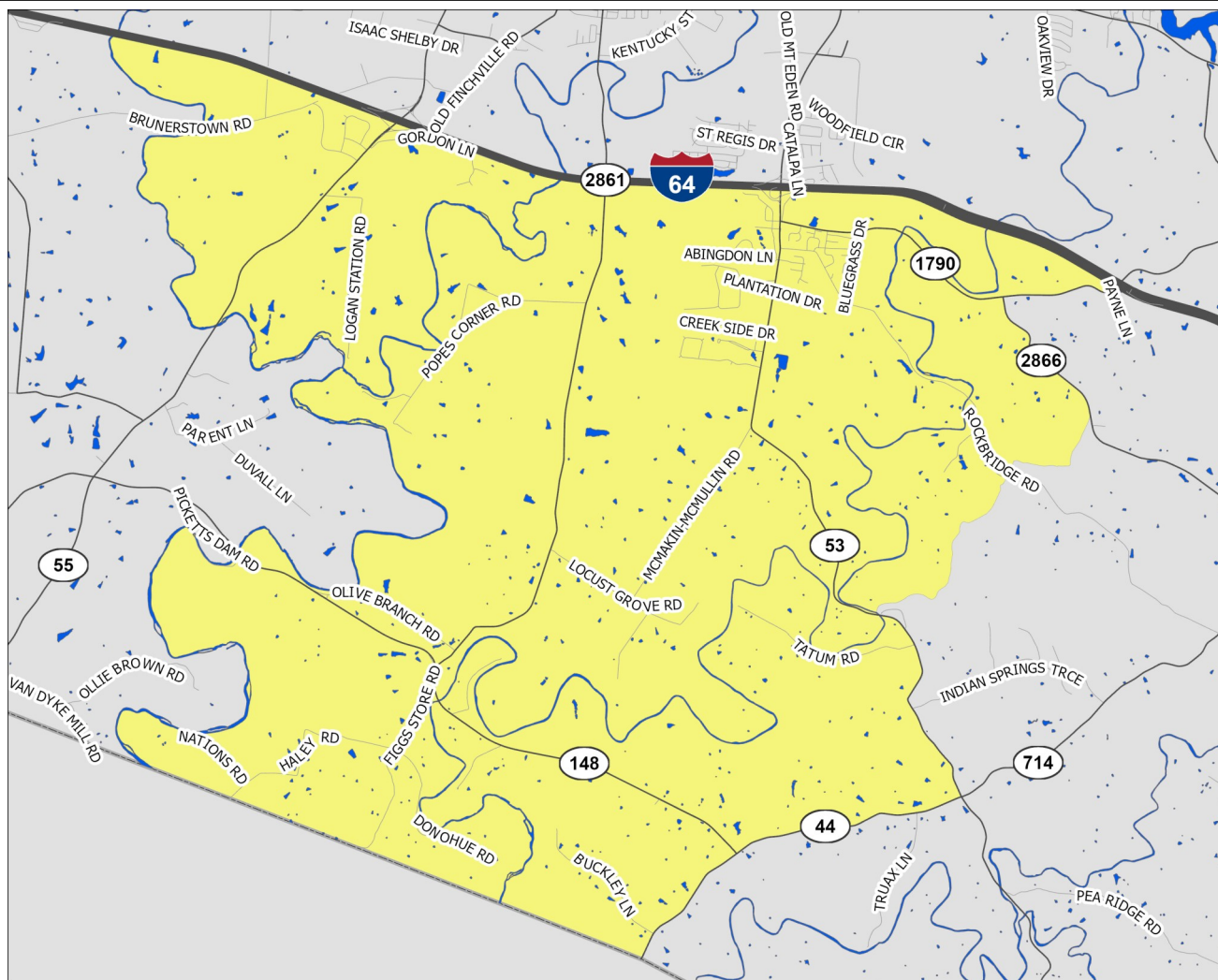


# Shelbyville South-South Shelby NEIGHBORHOOD PROFILE

June 2022



A Partnership Between Metro  
United Way and the Kentucky  
State Data Center at the  
University of Louisville



Scale = 1:59,330

Census Tract: 404.02

Shelby County, Kentucky

## Shelbyville South-South Shelby

- Interstate Highways
- US/State Highways
- Local Streets
- Rivers-Lakes-Streams



This profile uses census tracts to approximate neighborhoods. Census tracts are statistical units used by the Census Bureau to enumerate data within small areas, and typically align well (but not perfectly) with traditional neighborhoods.

# POPULATION CHARACTERISTICS

## Age and Sex

	SS-SS		County	MSA
	Estimate	Percent	Percent	Percent
Total population	4,370	—	48,100	1,262,287
Male	2,309	53%	49%	49%
Female	2,061	47%	51%	51%

	SS-SS		County	MSA
	Estimate	Percent	Percent	Percent
Population under age 5	207	5%	6%	6%
Under age 3	72	2%	4%	4%
Age 3 and 4	135	3%	2%	2%
Population under age 18	911	21%	23%	22%
Age 5 to 14	486	11%	12%	13%
Age 15 to 17	218	5%	4%	4%
Population age 18 to 64	2,315	53%	61%	62%
Population age 65 and over	1,144	26%	16%	16%

## Race, Ethnicity, and Nativity

	SS-SS		County	MSA
	Estimate	Percent	Percent	Percent
White, non-Hispanic/Latino	3,569	82%	79%	75%
Black, non-Hispanic/Latino	148	3%	6%	15%
Asian, non-Hispanic/Latino	72	2%	1%	2%
Hispanic/Latino, of any race	261	6%	10%	5%
Multiple races, non-Hispanic/Latino	76	2%	3%	3%
Other, non-Hispanic/Latino	244	6%	1%	0%
Foreign born	99	2%	6%	6%

## Veteran Status

	SS-SS		County	MSA
	Estimate	Percent	Percent	Percent
Civilian population 18 years and over	3,459	—	36,940	978,060
Veterans	536	15%	7%	8%

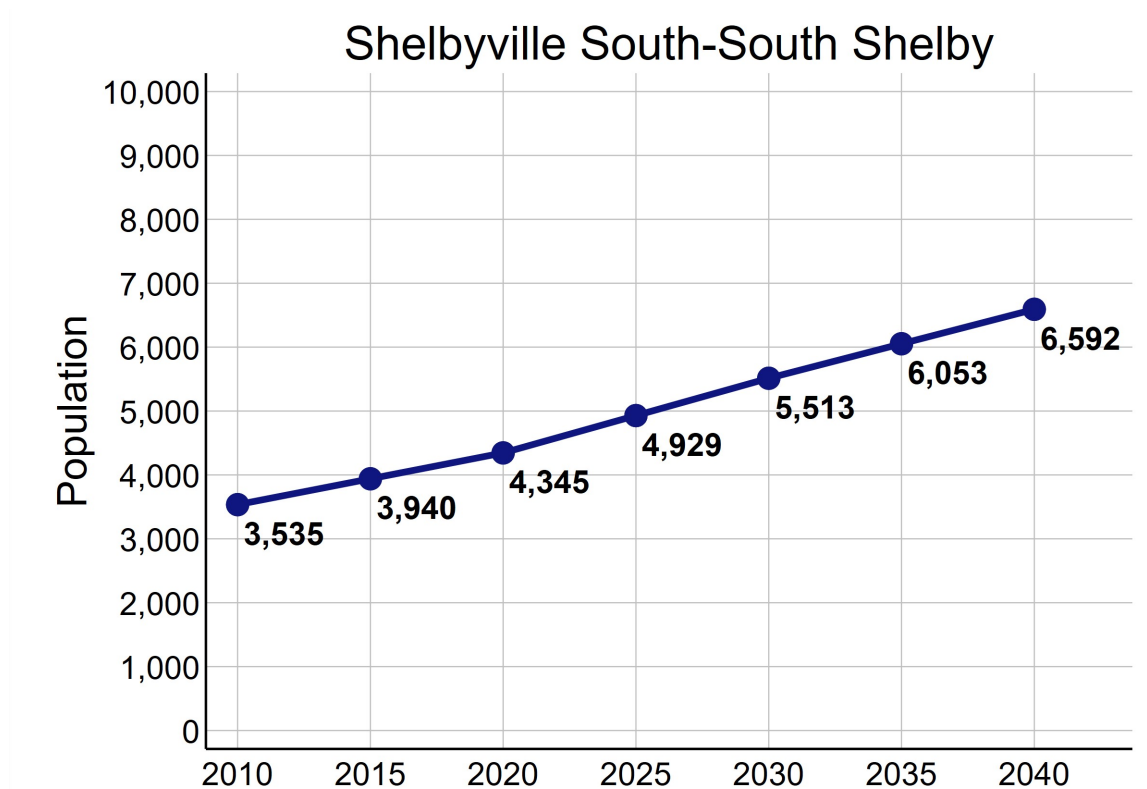
Data Source: U.S. Census Bureau, 2016-2020 American Community Survey. Note: Percentages may not sum to 100 due to rounding.  
MSA=Metropolitan Statistical Area

# POPULATION CHARACTERISTICS

## Households and Families

	SS-SS		County	MSA
	Estimate	Percent	Percent	Percent
Total households	1,411	—	16,801	497,106
Married couple family households	880	62%	59%	46%
w/related children	426	30%	25%	18%
Male householder family households	89	6%	4%	5%
w/related children	5	0%	2%	3%
Female householder family households	116	8%	9%	13%
w/related children	92	7%	7%	8%
Non-family households	326	23%	27%	37%
Single person households	243	17%	22%	31%
Population in group quarters	29	1%	3%	2%

## Population Projections



Data Source: U.S. Census Bureau, 2016-2020 American Community Survey. STATS Indiana, Kentucky State Data Center 2022 Population Projections. Note: Percentages may not sum to 100 due to rounding.

# ECONOMIC CHARACTERISTICS

## Income

	SS-SS	County	MSA
Median household income (in 2020 dollars)	\$84,531	\$72,564	\$60,891
Median earnings for full-time male workers	\$51,480	\$53,138	\$52,300
Median earnings for full-time female workers	\$32,596	\$27,973	\$31,196
Gini coefficient	0.43	0.45	0.46

## SNAP Benefits

	SS-SS		County	MSA
	Estimate	Percent	Percent	Percent
Households receiving SNAP Benefits	29	2%	8%	9%
Households with public assistance (PA) income	11	1%	1%	2%
Households receiving either SNAP or PA	29	2%	9%	10%

## Vehicles Available

	SS-SS		County	MSA
	Estimate	Percent	Percent	Percent
Households with no vehicle	11	1%	3%	7%

Data Source: U.S. Census Bureau, 2016-2020 American Community Survey.



# ECONOMIC CHARACTERISTICS

## Poverty Status of Individuals

	SS-SS		County	MSA
	Estimate	Percent	Percent	Percent
Total population below federal poverty line (FPL)	130	3%	10%	12%
Population under 18 years below FPL	4	0%	13%	17%
Population under 6 years below FPL	0	0%	10%	19%
Population age 6 to 11 below FPL	0	0%	12%	18%
Population age 12 to 17 below FPL	4	1%	17%	16%
Population age 18 to 64 below FPL	104	4%	9%	11%
Population age 65 and over below FPL	22	2%	6%	8%
Total population below 150% of the FPL	464	11%	19%	20%
Population under 18 years below 150% of the FPL	129	14%	26%	29%
Population under 6 years below 150% of the FPL	0	0%	24%	32%
Population age 6 to 11 below 150% of the FPL	8	4%	27%	30%
Population age 12 to 17 below 150% of the FPL	121	24%	27%	24%
Population age 18 to 64 below 150% of the FPL	275	12%	17%	18%
Population age 65 and over below 150% of the FPL	60	5%	14%	16%
Total population below 185% of the FPL	614	14%	27%	26%
Population under 18 years below 185% of the FPL	145	16%	38%	35%
Population under 6 years below 185% of the FPL	0	0%	38%	40%
Population age 6 to 11 below 185% of the FPL	24	13%	39%	37%
Population age 12 to 17 below 185% of the FPL	121	24%	36%	30%
Population age 18 to 64 below 185% of the FPL	350	15%	25%	23%
Population age 65 and over below 185% of the FPL	119	10%	20%	22%
Total population below 200% of the FPL	724	17%	29%	28%
Population under 18 years below 200% of the FPL	155	17%	43%	38%
Population under 6 years below 200% of the FPL	10	4%	42%	42%
Population age 6 to 11 below 200% of the FPL	24	13%	50%	39%
Population age 12 to 17 below 200% of the FPL	121	24%	38%	33%
Population age 18 to 64 below 200% of the FPL	379	16%	26%	25%
Population age 65 and over below 200% of the FPL	190	17%	22%	25%

Data Source: U.S. Census Bureau, 2016-2020 American Community Survey.

# ECONOMIC CHARACTERISTICS

## Poverty Status

Poverty status is determined by comparing a family's income to defined income thresholds that vary by family size and composition. If a family's total income is less than the established threshold for a family of that size, then that family and every individual in it is considered in poverty. The official poverty thresholds do not vary geographically, but they are updated for inflation annually. The official poverty definition uses money income before taxes and does not include capital gains or non-cash benefits (such as public housing, Medicaid, and food stamps).

The 2022 Poverty Guidelines as established by the U.S. Department of Health and Human Services:

Number of persons in household	Poverty guideline
1	\$13,590
2	\$18,310
3	\$23,030
4	\$27,750
5	\$32,470
6	\$37,190
7	\$41,910
8	\$46,630

## Poverty Status of Families

	SS-SS		County	MSA
	Estimate	Percent	Percent	Percent
Families	1,085	—	12,203	314,935
Families below federal poverty line (FPL)	10	1%	6%	8%
Families below 150% of the FPL	89	8%	13%	15%
Families below 185% of the FPL	121	11%	20%	20%
Families below 200% of the FPL	154	14%	22%	22%
Families with related children	523	48%	47%	47%
Families with related children below FPL	0	0%	5%	6%

Data Source: U.S. Census Bureau, 2016-2020 American Community Survey.

# ECONOMIC CHARACTERISTICS

An **unemployed** person is someone who does not have a job, but is actively looking for a job and is available for work. The unemployment rate is calculated as the number of unemployed persons in an age group divided by the sum of the number of employed and unemployed persons in that age group.

A person who is **not in the labor force** is someone who does not have a job, and is not looking for one. This includes students, retirees, those taking care of children or other family members, and others who are neither working nor seeking work. The rate of labor force participation is calculated as the number of persons not in the labor force in an age group divided by the population in that age group.

## Labor Force Status

	SS-SS		County	MSA
	Estimate	Percent	Percent	Percent
Age 16-19—Unemployed	5	10%	15%	13%
Age 20-21—Unemployed	5	6%	7%	9%
Age 22-24—Unemployed	0	0%	8%	9%
Age 25-64—Unemployed	33	2%	3%	4%
Age 65 and over—Unemployed	0	0%	1%	3%
Total unemployed, age 16 and over	43	2%	4%	5%

	SS-SS		County	MSA
	Estimate	Percent	Percent	Percent
Age 16-19—Not in the labor force	131	72%	55%	53%
Age 20-21—Not in the labor force	6	7%	29%	23%
Age 22-24—Not in the labor force	10	5%	15%	17%
Age 25-64—Not in the labor force	288	14%	21%	21%
Age 65 and over—Not in the labor force	898	78%	78%	80%
Total not in the labor force, age 16 and over	1,333	37%	35%	35%

Data Source: U.S. Census Bureau, 2016-2020 American Community Survey.

# ECONOMIC CHARACTERISTICS

## Class of Worker

	SS-SS		County	MSA
	Estimate	Percent	Percent	Percent
Private company/organization	1,386	62%	71%	74%
Nonprofit company/organization	104	5%	5%	8%
Local government	150	7%	5%	5%
State government	161	7%	6%	4%
Federal government	0	0%	1%	2%
Self-employed or unpaid family worker	441	20%	11%	8%

## Weeks and Hours Usually Worked

	SS-SS		County	MSA
	Estimate	Percent	Percent	Percent
Works 48-52 weeks/year, 35 or more hours/week	1,335	65%	67%	69%
Works 48-52 weeks/year, less than 35 hours/week	229	11%	10%	11%
Works 0-47 weeks/year, 35 or more hours/week	328	16%	12%	10%
Works 0-47 weeks/year, less than 35 hours/week	167	8%	11%	11%

Data Source: U.S. Census Bureau, 2016-2020 American Community Survey. Note: Percentages may not sum to 100 due to rounding.

# ECONOMIC CHARACTERISTICS

## Journey to Work

	SS-SS		County	MSA
	Estimate	Percent	Percent	Percent
Drives alone in car	1,657	84%	85%	86%
Bus	17	1%	1%	2%
Bike	0	0%	0%	0%
Walk	0	0%	1%	2%
All other modes	310	16%	12%	10%

	SS-SS		County	MSA
	Estimate	Percent	Percent	Percent
Commutes less than 10 minutes	111	6%	11%	10%
Commutes 10-19 minutes	492	25%	27%	30%
Commutes 20-29 minutes	211	11%	18%	28%
Commutes 30-44 minutes	753	38%	26%	23%
Commutes 45-59 minutes	341	17%	11%	6%
Commutes 60 or more minutes	76	4%	6%	4%

	SS-SS		County	MSA
	Estimate	Percent	Percent	Percent
Works at home	128	6%	7%	7%

Data Source: U.S. Census Bureau, 2016-2020 American Community Survey. Note: Except for "Works at Home", estimates limited to population who commute. Percentages may not sum to 100 due to rounding.

# ECONOMIC CHARACTERISTICS

“Place of Work” identifies jobs located within the neighborhood and held by workers from **inside or outside** of the neighborhood. “Home Neighborhood of Worker” identifies jobs held by neighborhood residents, which may be located **inside or outside** of the neighborhood. The workplace is based on the administrative address, and may or may not be the location that a worker reports to most often.

## Jobs by Place of Work (2019)

	SS-SS		County	MSA
	Estimate	Percent	Percent	Percent
Total full and part-time jobs	1,220	—	15,996	653,432
Agriculture and mining	38	3%	1%	0%
Construction	28	2%	4%	4%
Manufacturing	116	10%	24%	13%
Trade	669	55%	21%	15%
Transportation, warehousing, and utilities	2	0%	3%	9%
Finance, insurance, information, and real estate	55	5%	4%	9%
Professional services	39	3%	4%	5%
Management and administration	17	1%	6%	8%
Education	0	0%	9%	7%
Health care	2	0%	7%	13%
Entertainment, arts, and recreation	3	0%	1%	2%
Accommodations and food service	222	18%	9%	9%
Other services	12	1%	4%	3%
Public administration	17	1%	4%	3%

## Jobs by Home Neighborhood of Worker (2019)

	SS-SS		County	MSA
	Estimate	Percent	Percent	Percent
Total full and part-time jobs	2,175	—	22,086	613,518
Agriculture and mining	13	1%	1%	0%
Construction	89	4%	4%	4%
Manufacturing	349	16%	16%	13%
Trade	347	16%	17%	15%
Transportation, warehousing, and utilities	129	6%	5%	8%
Finance, insurance, information, and real estate	169	8%	8%	8%
Professional services	131	6%	5%	5%
Management and administration	132	6%	7%	8%
Education	198	9%	8%	8%
Health care	245	11%	11%	13%
Entertainment, arts, and recreation	36	2%	1%	2%
Accommodations and food service	154	7%	9%	9%
Other services	52	2%	3%	3%
Public administration	131	6%	6%	3%

Data Source: U.S. Census Bureau, Longitudinal Employer-Household Dynamics Origin-Destination Employment Statistics (LODES). Note: Percentages may not sum to 100 due to rounding.



# EDUCATION CHARACTERISTICS

## School Enrollment

	SS-SS		County	MSA
	Estimate	Percent	Percent	Percent
Population age 3 and 4	135	—	1,178	31,544
Population age 3 and 4, enrolled in school	94	70%	40%	42%
Enrolled in Public school	10	7%	15%	20%
Population age 5 to 14	486	—	6,011	158,051
Population age 5 to 14, enrolled in school	463	95%	96%	96%
Enrolled in Public school	406	84%	80%	79%
Population age 15 to 17	218	—	1,948	48,770
Population age 15 to 17, enrolled in school	218	100%	97%	97%
Enrolled in Public school	174	80%	86%	79%
Population age 18 to 24	313	—	4,053	105,506
Population age 18 to 24, enrolled in school	94	30%	37%	43%

## English Proficiency

	SS-SS		County	MSA
	Estimate	Percent	Percent	Percent
Population age 3+ speaking Spanish	146	4%	7%	4%
w/limited English proficiency	39	1%	3%	2%
Population age 3+ speaking Asian/PI language	0	0%	0%	1%
w/limited English proficiency	0	0%	0%	1%
Population age 3+ speaking Arabic	0	0%	0%	0%
w/limited English proficiency	0	0%	0%	0%
Population age 3+ speaking other language	93	2%	1%	2%
w/limited English proficiency	0	0%	1%	1%

Data Source: U.S. Census Bureau, 2016-2020 American Community Survey.

# EDUCATION CHARACTERISTICS

## Educational Attainment

	SS-SS		County	MSA
	Estimate	Percent	Percent	Percent
Population age <b>18 to 24</b>	313	—	4,053	105,506
Less than 9th grade education	0	0%	0%	1%
9th thru 12th grade education	16	5%	11%	11%
High school graduate/GED	71	23%	42%	36%
Some college, no degree	50	16%	34%	36%
Associate degree	34	11%	2%	4%
Bachelor's degree	142	45%	10%	11%
Graduate or professional degree	0	0%	1%	1%

	SS-SS		County	MSA
	Estimate	Percent	Percent	Percent
Population age <b>25 and over</b>	3,146	—	33,047	873,573
Less than 9th grade education	25	1%	5%	3%
9th thru 12th grade education	208	7%	8%	7%
High school graduate/GED	768	24%	29%	29%
Some college, no degree	585	19%	21%	22%
Associate degree	293	9%	9%	9%
Bachelor's degree	678	22%	17%	18%
Graduate or professional degree	589	19%	11%	12%

Data Source: U.S. Census Bureau, 2016-2020 American Community Survey, Note: Percentages may not sum to 100 due to rounding.

# EDUCATION CHARACTERISTICS

## Field of Degree of Bachelor's Degree Holders

	SS-SS		County	MSA
	Estimate	Percent	Percent	Percent
Total degrees	1,319	—	9,894	282,998
Science and engineering				
Computers, mathematics, and statistics	36	3%	3%	4%
Biological, agricultural, environmental sciences	72	5%	5%	5%
Physical and related sciences	57	4%	4%	3%
Psychology	84	6%	6%	5%
Social sciences	51	4%	4%	7%
Engineering	86	7%	7%	6%
Multidisciplinary studies	1	0%	1%	1%
Science and engineering related fields	241	18%	11%	11%
Business	277	21%	24%	21%
Education	220	17%	13%	12%
Arts, humanities, and other				
Literature and languages	11	1%	2%	4%
Liberal arts and history	32	2%	8%	6%
Visual and performing arts	10	1%	1%	4%
Communications	64	5%	5%	5%
Other	77	6%	7%	6%

Data Source: U.S. Census Bureau, 2016-2020 American Community Survey. Note: Percentages may not sum to 100 due to rounding.

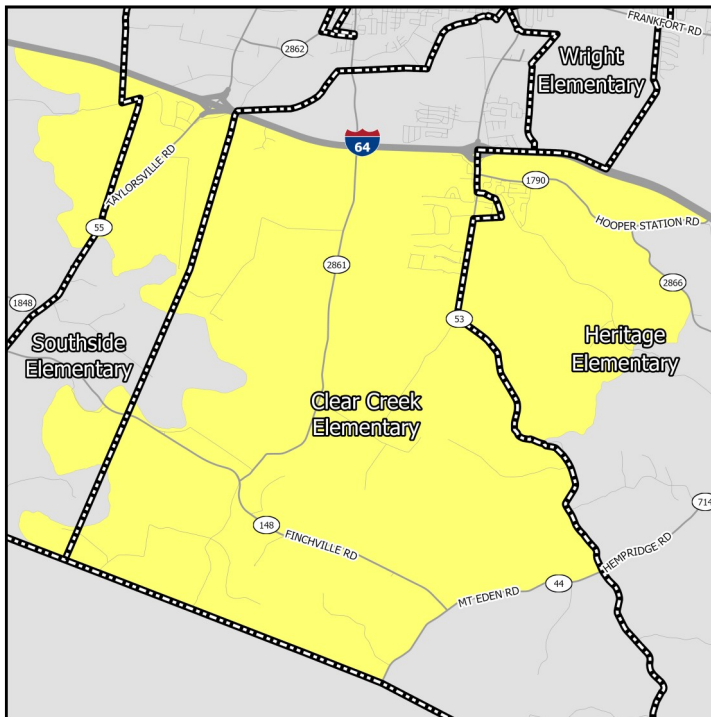
# EDUCATION CHARACTERISTICS

## Shelby County Public Schools

Shelbyville South-South Shelby neighborhood is highlighted in yellow. Thick dashed lines represent school catchment area boundaries.

### Nearby Schools in Jefferson County

Jefferson County Public Schools students are assigned to a “resides” (home) school, and for elementary students a cluster, based on their home address. Students may attend their resides school, other schools within the cluster, or apply for traditional and magnet schools within the district. There are also alternative schools serving particular segments of the population. The maps on this page

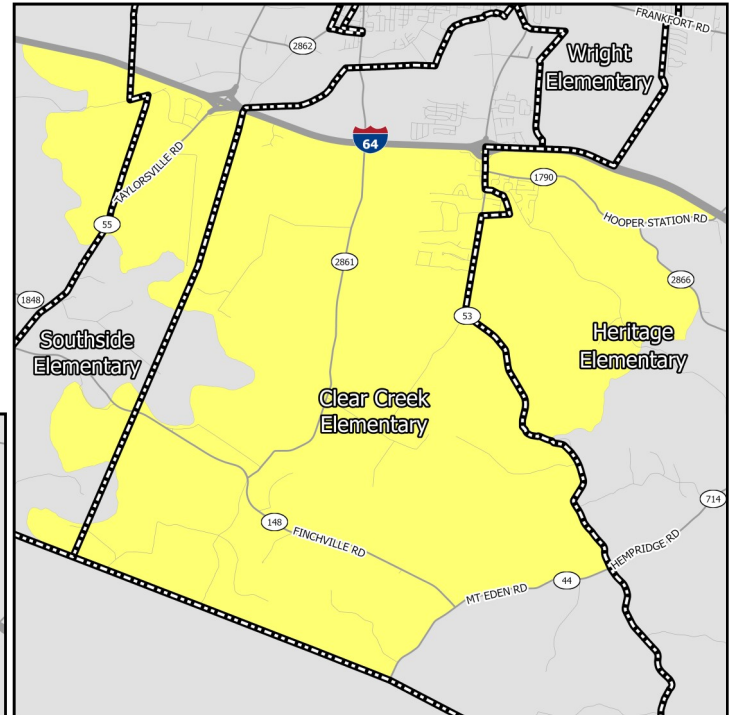


### Middle Schools

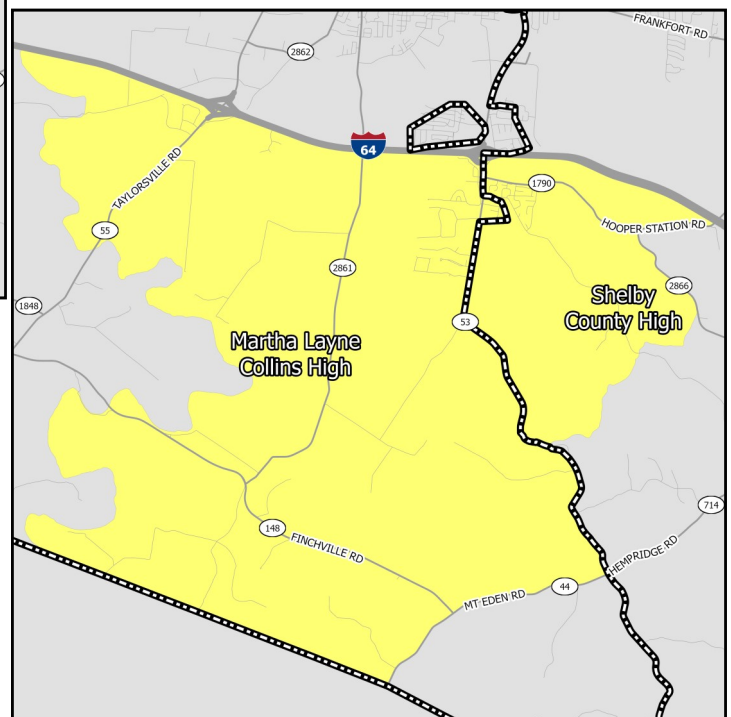
show only the “resides” schools for students within a particular neighborhood. Additional information on JCPS student assignment – which has recently been revised – can be found on their website.

### Nearby Schools in Indiana

Indiana schools have open enrollment policies that allow for intra-district and inter-district transfers. The maps on this page show only the schools assigned to a student within a particular neighborhood based on their home address. Additional information on open enrollment policies can be obtained from individual district offices.



### Elementary Schools



### High Schools

# EDUCATION CHARACTERISTICS

## Shelby County Public Schools

Schools Serving Neighborhood	Level	Cluster	Enrollment	Non-White	Free Lunch Eligible	Student/Teacher	KDE/IDOE Grade
Clear Creek	Elementary	—	474	41.1%	46.7%	13.3	3
Heritage	Elementary	—	446	15.2%	51.7%	14.8	3
Simpsonville	Elementary	—	479	24.4%	37.3%	15.3	3
Southside	Elementary	—	451	45.7%	62.0%	14.6	2
Shelby County East	Middle	—	610	26.6%	50.5%	17.7	3
Shelby County West	Middle	—	676	47.8%	57.4%	15.6	2
Martha Layne Col-	High	—	1,298	37.0%	40.9%	19.1	3
Shelby County	High	—	1,025	32.1%	49.8%	18.2	2

Data Source: National Center for Education Statistics, Kentucky Department of Education (KDE), Indiana Department of Education (IDOE), Jefferson County Public Schools, 2020-2021 Academic Year. Note: KDE grade is the number of stars — out of 5 — that the Kentucky school or district received on the most recent (2018-2019) school accountability report. IDOE grade is the A-F grade that the Indiana school or district received on the most recent (2018-2019) school accountability report.

# EDUCATION CHARACTERISTICS

## Shelby County Public Schools

Schools Serving Neighborhood	Level	Reading Proficiency	Math Proficiency	KG Ready	Graduation Rate	College Transition
Clear Creek	Elementary	48.4%	35.6%	46.1%	—	—
Heritage	Elementary	50.0%	50.8%	58.1%	—	—
Simpsonville	Elementary	52.3%	56.1%	32.5%	—	—
Southside	Elementary	31.5%	19.8%	49.4%	—	—
Shelby County East	Middle	53.3%	36.6%	—	—	—
Shelby County West	Middle	53.0%	35.3%	—	—	—
Martha Layne Collins	High	42.0%	27.0%	—	92.4%	77.5%
Shelby County	High	40.5%	23.9%	—	90.3%	65.5%

Data Source: Kentucky Department of Education, Indiana Department of Education, 2018-2019 Academic Year. Note: KG=Kindergarten.



# HOUSING CHARACTERISTICS

## Housing Units

	SS-SS		County	MSA
	Estimate	Percent	Percent	Percent
Total housing units	1,644	—	18,134	547,307
Occupied housing units	1,411	86%	93%	91%
Owner occupied	1,066	76%	71%	67%
Renter occupied	345	24%	29%	33%
Vacant housing units	233	14%	7%	9%

	SS-SS		County	MSA
	Estimate	Percent	Percent	Percent
Single-family housing units	1,325	81%	83%	73%
Multi-family housing units	307	19%	14%	23%
2-4 unit structures	93	6%	7%	8%
5-9 unit structures	0	0%	3%	6%
10+ unit structures	214	13%	4%	10%
Other housing units	12	1%	3%	3%

## Home Value/Rent

	SS-SS	County	MSA
Median reported value of owner occupied housing units	\$275,700	\$202,000	\$177,400
Median gross rent of renter occupied housing units	\$1,084	\$833	\$882
Median contract rent of renter occupied housing units	\$961	\$642	\$719

## Internet Access

	SS-SS		County	MSA
	Estimate	Percent	Percent	Percent
Households w/internet access of any type	1,290	91%	89%	87%
Households w/any broadband internet access	1,248	88%	88%	85%
Households w/cell phone internet access only	214	15%	15%	12%
Households w/no internet access	121	9%	11%	13%

Data Source: U.S. Census Bureau, 2016-2020 American Community Survey. Note: Percentages may not sum to 100 due to rounding. **Contract rent** is the amount indicated on the lease. **Gross rent** includes the estimated monthly cost of utilities that are paid by the tenant.

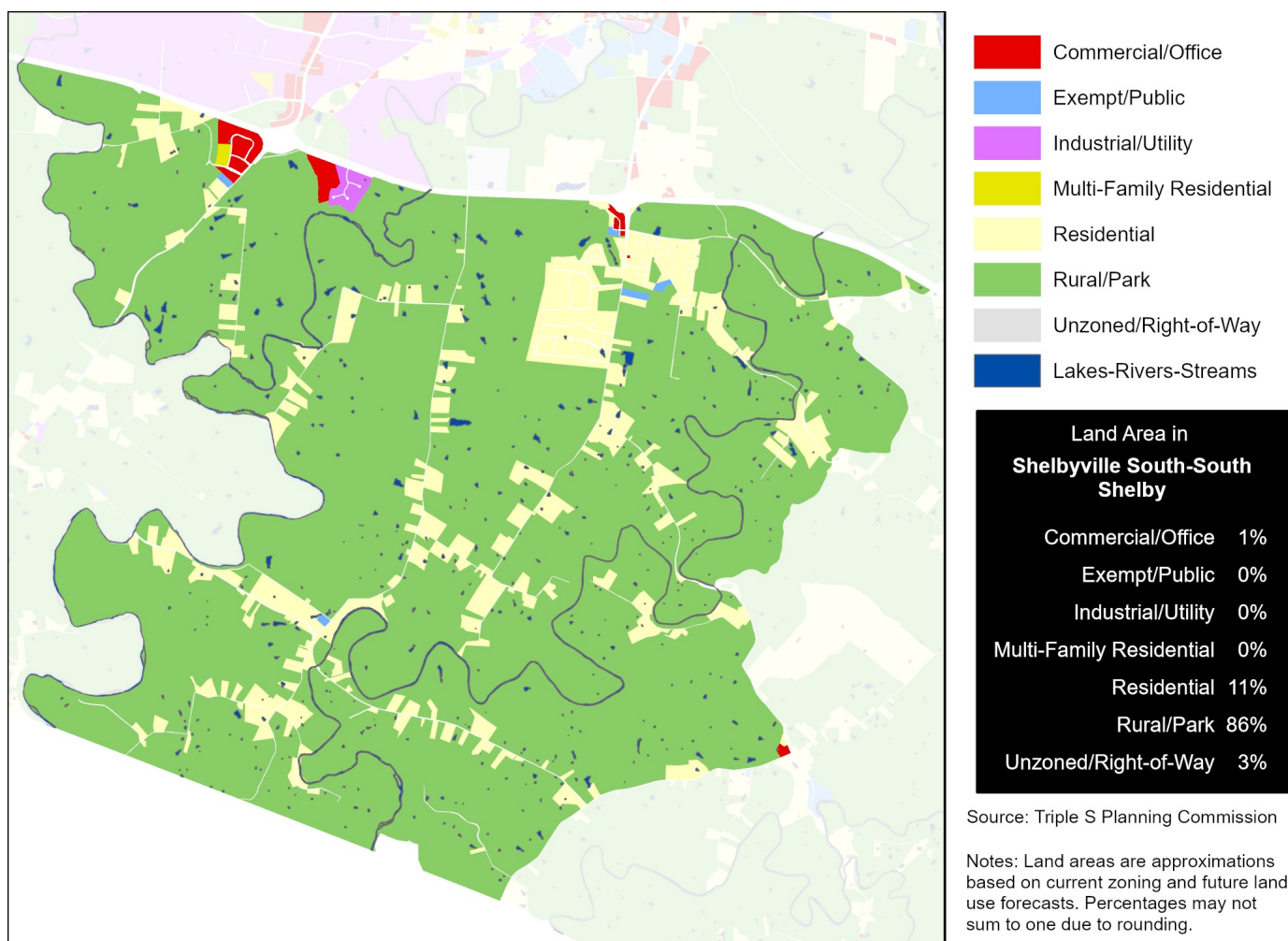
# HOUSING CHARACTERISTICS

## Housing Cost Burden

According to the U.S. Department of Housing and Urban Development, households that spend more than 30% of their income on housing are considered cost burdened and may have difficulty affording necessities such as food, transportation, and medical care.

	SS-SS		County	MSA
	Estimate	Percent	Percent	Percent
Renters paying 30%+ income on housing	55	16%	38%	43%
Owners paying 30%+ income on housing (mortgage)	135	21%	23%	20%
Owners paying 30%+ income on housing (no mortgage)	45	11%	12%	10%

## Land Use



Data Source (Housing Cost): U.S. Census Bureau, 2016-2020 American Community Survey.

# HEALTH CHARACTERISTICS

## Health Insurance Coverage

	SS-SS		County	MSA
	Estimate	Percent	Percent	Percent
Population under 6 years without health insurance	35	15%	5%	3%
Population under 18 years without health insurance	77	8%	4%	3%
Total population without health insurance	321	7%	7%	5%

## Disability Status

	SS-SS		County	MSA
	Estimate	Percent	Percent	Percent
Population with a disability	468	11%	13%	14%

## Food Access

	SS-SS	Shelby County
Population who are low income and do not live close to a grocery store	0	388
Census tracts designated a food desert	0	0

## Crime (2019)

	SS-SS	County	MSA
Violent crimes	—	292	16,031
Violent crimes per 100,000 population	—	594	1,262
Property crimes	—	619	34,867
Property crimes per 100,000 population	—	1,259	2,744

Neighborhood crime includes only incidents reported to Louisville Metro Police Department — it does not include incidents reported to other local agencies. County and MSA crime includes incidents reported to all agencies.

Data Source: U.S. Census Bureau, 2016-2020 American Community Survey. ESRI Business Analyst. FBI, Uniform Crime Reports. Louisville Metro Police Department. Note: Population who are low income is defined as living at or below 200 percent of the federal poverty line. Within an urban area, not living close to a grocery store is defined as living further than one mile from a full service grocery store. Food deserts are defined at the census tract level, when the tract is considered low income and low access. A tract is considered low income if the tract's poverty rate is 20% or greater, or if the tract has a median family income less than or equal to 80% of the metropolitan area's median family income. A census tract is considered to have low access if a significant number (at least 500 people) and share (at least 33%) of individuals in the tract are greater than one mile from the nearest grocery store.

# HEALTH CHARACTERISTICS

## Fertility Measures

	SS-SS	County	MSA
Births to mothers who smoked during pregnancy	10%	14%	10%
Births to mothers without a high school degree	4%	15%	—
Births to unmarried mothers	33%	40%	47%
Low birthweight births (<2,500 grams)	12%	9%	9%
Teen birth rate per 1,000 women age 15-19	24	21.0	22.6

## Mortality Measures

	SS-SS	County	MSA
Years of potential life lost (age 75) per 100,000	7,288	6,494	8,186

## Health Behaviors

	SS-SS	County	MSA
Population 18+ currently smokes	18%	21%	17%
Population 18+ obese	34%	37%	34%
Population 18+ binge drinking	15%	15%	16%
Population 18+ reporting 'fair' or 'poor' health	13%	15%	17%

## Health Outcomes

	SS-SS	County	MSA
Population 18+ reports having/had asthma	9%	10%	15%
Population 18+ reports having/had cancer	8%	7%	10%
Population 18+ reports having/had CHD	6%	7%	8%
Population 18+ reports having/had COPD	8%	9%	10%
Population 18+ reports having/had depression	23%	24%	23%
Population 18+ reports having/had diabetes	11%	12%	11%
Population 18+ reports having/had stroke	3%	4%	5%

Data Source: Vital Stats: Kentucky Cabinet for Health and Family Services Department of Public Health, Indiana Department of Health, 2015-2019. Health Behaviors and Health Outcomes: Centers for Disease Control, Behavioral Risk Factor Surveillance System, 2019. Note: CHD=coronary heart disease, COPD=chronic obstructive pulmonary disease.