

BLONDME

PASTEL TONING



COLOR APPLICATION:

1. Start off by sectioning the hair as shown. Mix BLONDME Bond Enforcing Premium Clay Lightener with BLONDME Premium Developer 12%/40 Vol. (mix 1:1.5).



2. Begin the application by loading the product in the middle part of the section, then feather upwards, and gradually saturate the product towards the ends.



3. Continue with the product application section by section, focusing on the mid-lengths and ends throughout the entire look. Once application is complete, leave in for up to 45 minutes - check development at regular intervals.



REMOVAL:

4. Use BLONDME Keratin Restore Bonding Shampoo and rinse thoroughly. Apply BLONDME Keratin Restore Bonding Mask for up to 5 minutes to rebalance the hair after the lightening process.



TONER APPLICATION:

5. Tone the hair using BLONDME Blonde Toning Biscuit + Sand (mix 1:1) with BLONDME Premium Developer 2%/7 Vol. (mix 1:1). Apply with an applicator bottle. Start at the regrowth leaving out the front section. After 5 minutes, work through mid-lengths and ends. For the last 5 minutes, work into the front section. Develop for 15 minutes.



FINAL CARE SERVICE:

6. Rinse. **Do not shampoo after toning!** Apply BLONDME Keratin Restore Bonding Mask to mid-lengths and ends and leave for up to 5 minutes. Rinse and style as desired.



The ideal partner to BLONDME Premium Lightener 9+!
Use BLONDME Blonde Toning for balanced neutralization & sophisticated tone enhancement.



LOOK CREATED BY JACK HOWARD
@JACKHOWARDCOLOR

LEADING BALAYAGE EDUCATOR

BLONDME Global Ambassador
Color World Commercial Genius 2019
BHBA Social Stylist 2019

Together. A passion for hair.

BLONDME

DEEP TONING



COLOR APPLICATION:

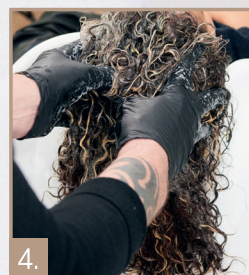
1. Start off by sectioning the hair as shown. Mix BLONDME Bond Enforcing Premium Lightener 9+ with BLONDME Premium Developer 6%/20 Vol. (mix 1:2).



2. Start the application at the nape area, alternating weaves and slices. Continue the application technique with diagonal sections at the contours up to the top panel.

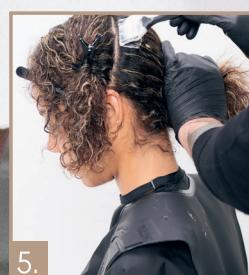


3. Leave in for up to 45 minutes (check development at regular intervals), remove the foils and rinse.



REMOVAL:

4. Shampoo with BLONDME Keratin Restore Bonding Shampoo and apply BLONDME Keratin Restore Bonding Mask for up to 5 minutes to rebalance the hair after the lightening process, then rinse.



TONER APPLICATION:

5. REGROWTH (COLOR 1): To create a shadow root effect, start the toner application at the regrowth using BLONDME Deep Toning shades Milk Chocolate + Brown Mahogany (mix 3:1) with BLONDME Premium Developer 2%/7 Vol. (mix 1:1).



6. MID-LENGTHS & ENDS (COLOR 2): Apply BLONDME Blonde Toning Ice-Irisé with BLONDME Premium Developer 2%/7 Vol. (mix 1:1) onto mid-lengths and ends for a perfect neutralization. Ensure that Color 1 and Color 2 are well blended where they meet on the hair. Develop for 20 minutes.



FINAL CARE SERVICE

7. Rinse. **Do not shampoo after toning!** Apply BLONDME Keratin Restore Bonding Mask to mid-lengths and ends and leave for up to 5 minutes. Rinse and style as desired.

The ideal partner to BLONDME Premium Lightener 9+! Use BLONDME Blonde Toning for balanced neutralization & sophisticated tone enhancement.



Salon
READER'S
CHOICE AWARDS
WINNER
2020



LOOK CREATED BY JACK HOWARD
@JACKHOWARDCOLOR

LEADING BALAYAGE EDUCATOR

BLONDME Global Ambassador
Color World Commercial Genius 2019
BHBA Social Stylist 2019

Together. A passion for hair.

Technical support line: 1-800-463-3081
schwarzkopf-professional.ca

© SchwarzkopfCAN
f SchwarzkopfProfessionalCanada
s SchwarzkopfProfessionalCanada