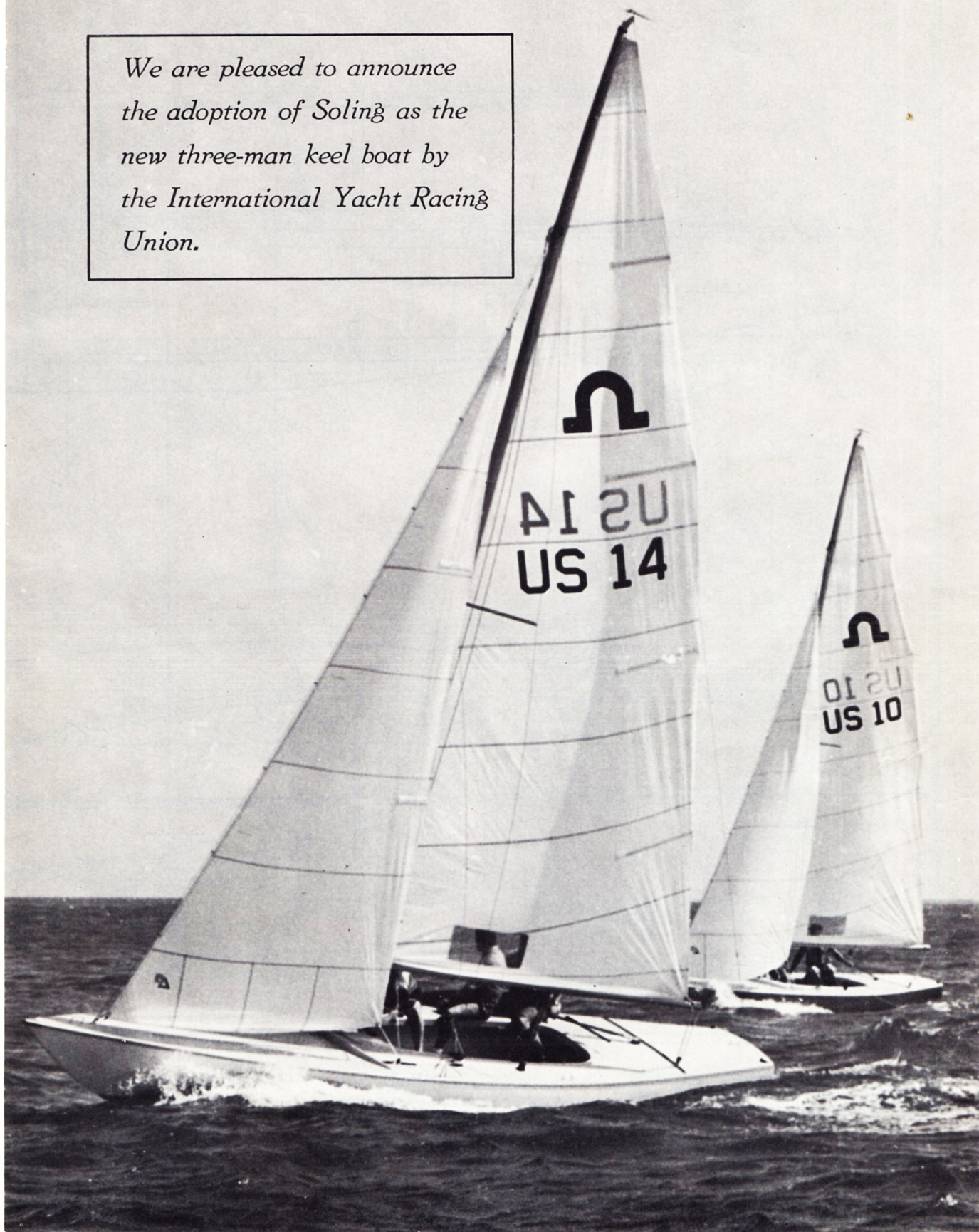
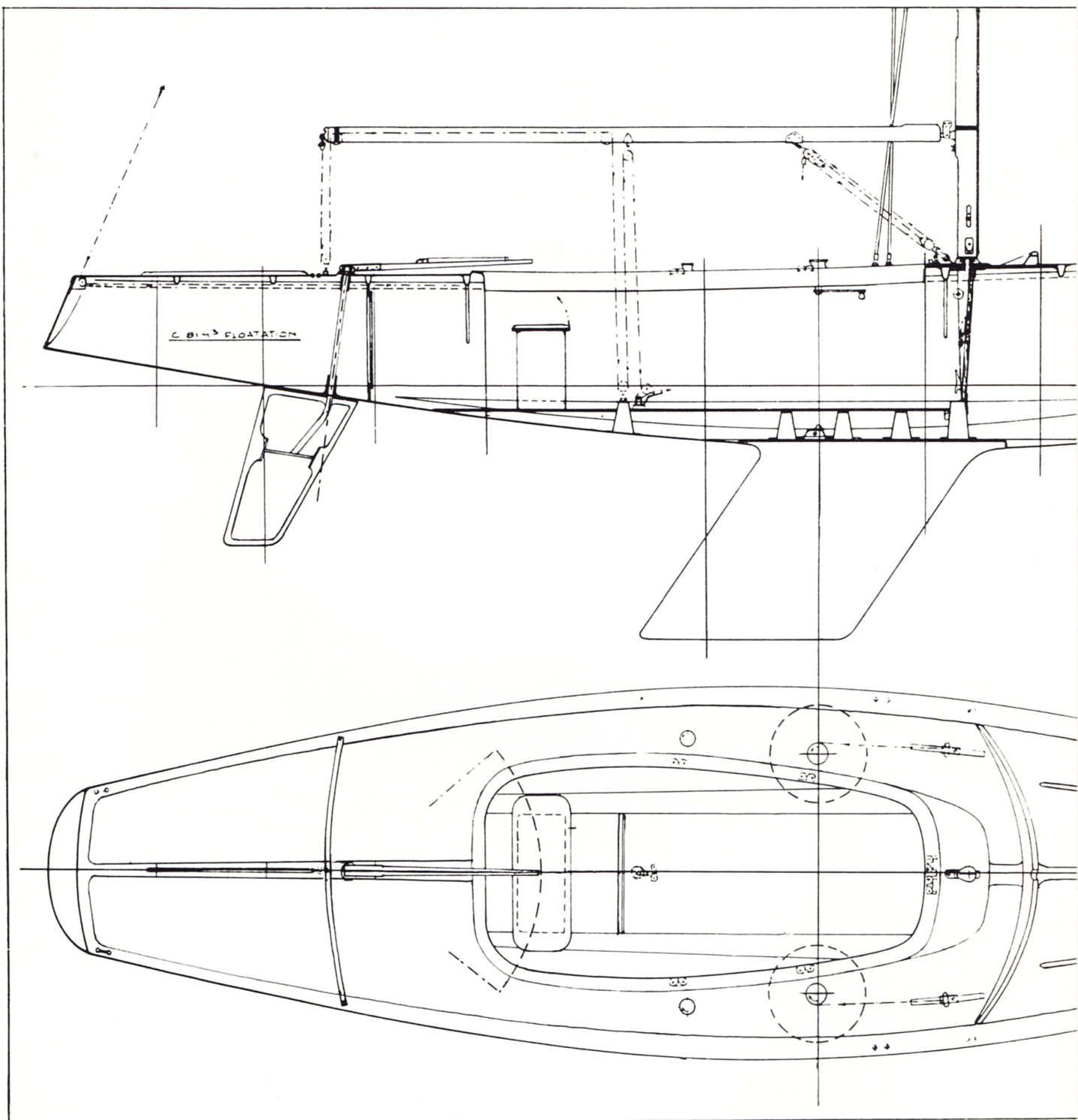


*We are pleased to announce
the adoption of Soling as the
new three-man keel boat by
the International Yacht Racing
Union.*



SOLING

THREE MAN KEEL BOAT

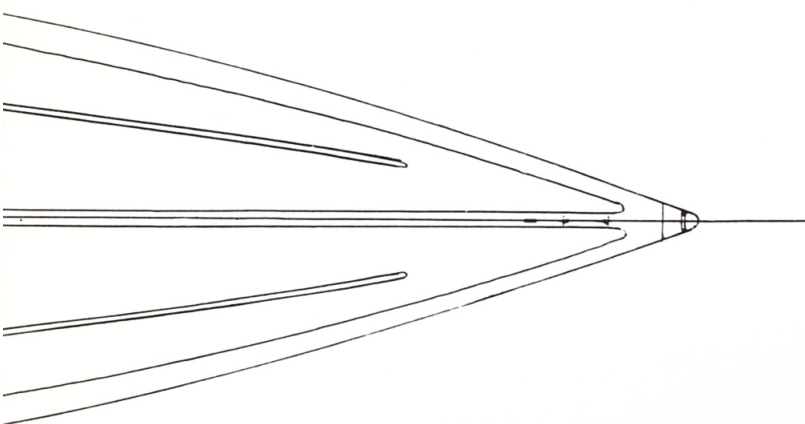
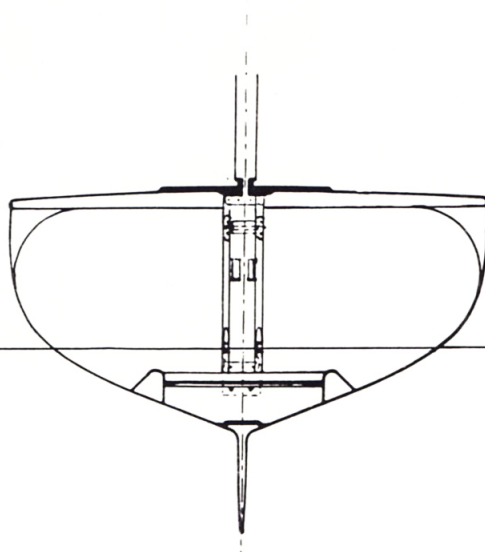
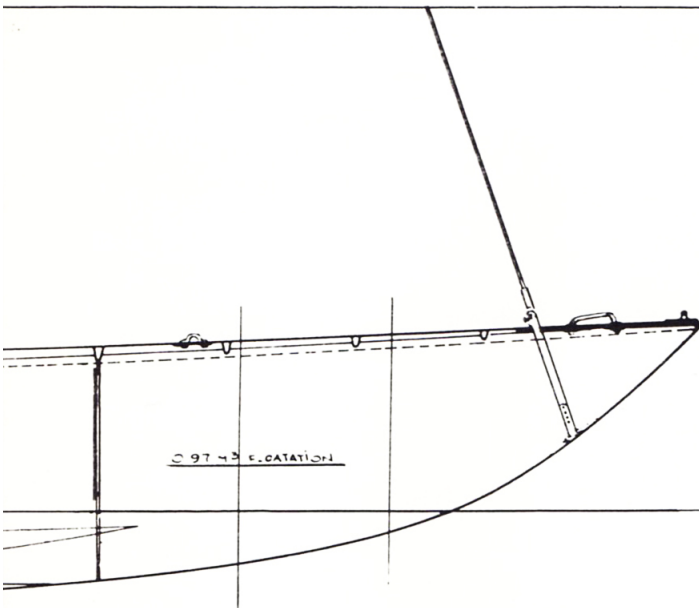


SOLING

The «Soling» is a One-designed Three-man Keel Boat built of glassfiber. She is designed by Jan Herman Linge, Oslo, Norway.

Fundamentally a racing machine, she has proven very fast and seaworthy in heavy weather, and planes when conditions are right. In light air she is unbeatable by boats of similar size. Everything has been done to keep the cost of maintenance down and the transport-cost low. The keel is flat and straight at the bottom edge, and

coupled with the fact that the total displacement is only 1.000 kg (2.200 lbs) the «Soling» is well suited for trailing. On longer distances where the volume plays an important part of the cost of transport, the keel, which is of iron, can be taken off by loosening 10 bolts. The mast is of aluminium and stepped on deck.

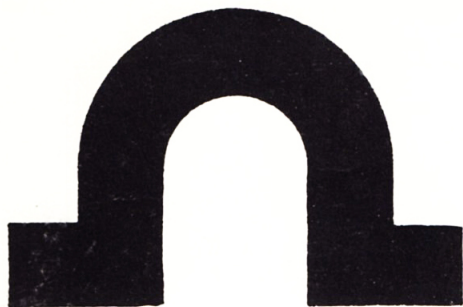


The crew can easily rig her without the help of a crane. When trailing she does not stick out so far as a mast that goes through the deck. The boom and spinnaker pole are also of aluminium and need little maintenance. The floor boards are of water-proofed plywood with mahogany covering. The seat for the helmsman is made

of mahogany and formed like a chest. Two jibsheet winches with handles below deck, two snubbing winches for the spinnaker sheets, two travellers for the mainsheet, adjustable jibleads, and the necessary number of jam cleats are all in place on the boat.

Apart from sails, the «Soling» will be provided with all the necessary equipment for racing, such as:

1. Complete spinnaker gear with topping lift, foreguy and spinnaker sheets.
2. Main and jib sheets.
3. Boomvang.



SOLING

Length overall	8.15 m — 26' — 9"
Length waterline	6.10 m — 20' — 0"
Beam — max.	1.90 m — 6' — 3"
Draft — max.	1.30 m — 4' — 3"
Freeboard av.	0.54 m — 1' — 9"
Displacement	1000 kg — 2200 lbs
Keel weight	580 kg — 1280 lbs
Sail area	21.7 m ² — 233 sq ft.



Extras which can be bought with the boat:

1. Sails, consisting of mainsail, jib and spinnaker.
2. Self bailers.
3. Water-tight bulkheads with man-hole can be inserted in the bow and stern, to make the boat unsinkable.
4. Bracket for outboard motor.
5. Chest which can be used as seat for the crew and container for equipment when cruising.
6. Compass.
7. Wind indicator.
8. Cushions for seats.
9. Life jackets.
10. Cockpit cover.
11. Boom tent for cruising.
12. Fitted canvas cover for protection of deck and topsides when trailing or in transport.
13. Cradle for transport or winter storage.
14. Trailer.

GEMICO CORPORATION

131 STATE STREET
BOSTON, MASS. 02109