

PORTRAIT OF DEATH



USED TO TELL STORIES OF--

HELLO PAT. YEAH
THE SAME THING/
VICTIM DEAD... DRAINED OF
BLOOD AND NO CLUES/





IT'S SO HORRIBLE AND

THAT MAN WITH THE SACHEL! I WONDER IF HE HAS ANY CONNECTION?



BYE NOW JIM! I--I HAVE TO GET BACK AND WRITE MY STORY.

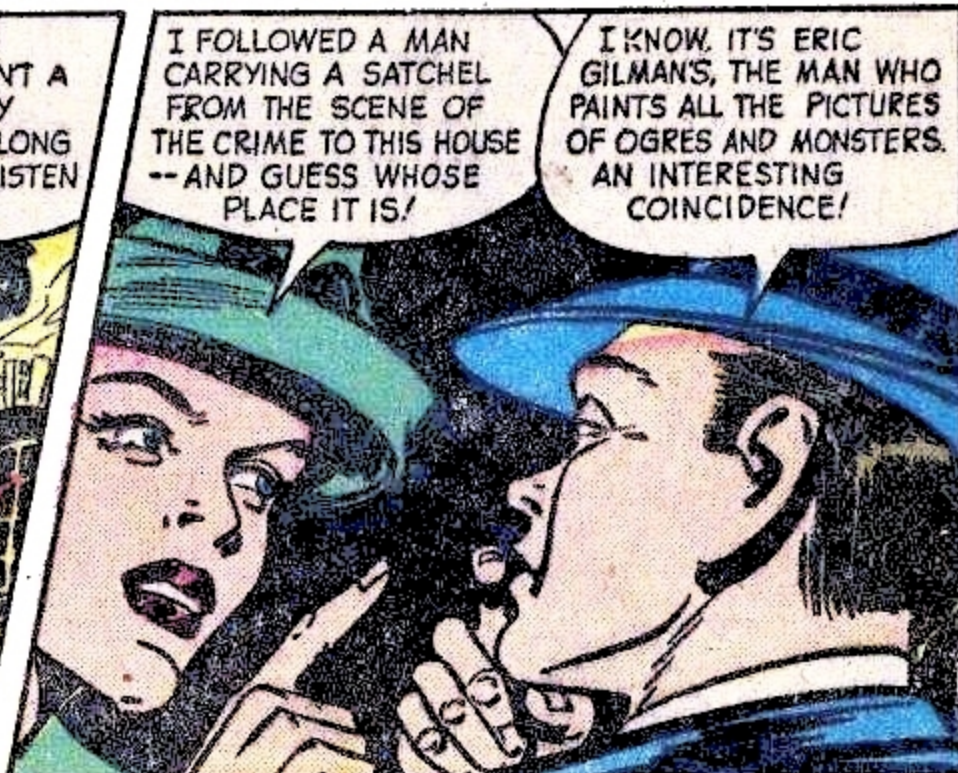
HMMM! THERE GOES A SMART REPORTER--AND IT'S JUST POSSIBLE SHE'S GOT ON TO SOMETHING WE'VE MISSED. LET'S FOLLOW HER, PETE!



TEN MINUTES LATER...

WELL, MISS BLOODHOUND, WHAT ARE YOU DOING HERE?

WHEW! JIM, YOU STARTLED ME! CAN'T A GIRL DO A JOB BY HERSELF? BUT AS LONG AS YOU'RE HERE, LISTEN TO THIS--



I FOLLOWED A MAN CARRYING A SACHEL FROM THE SCENE OF THE CRIME TO THIS HOUSE -- AND GUESS WHOSE PLACE IT IS!

I KNOW. IT'S ERIC GILMAN'S, THE MAN WHO PAINTS ALL THE PICTURES OF OGRES AND MONSTERS. AN INTERESTING COINCIDENCE!



OH, STOP! HE WOULDN'T BE THE MURDERER--PROBABLY JUST COLLECTING LOCAL COLOR. I'M GOING TO INTERVIEW HIM AND GET HIS VIEWS ON THE MURDERS AND DON'T HANG AROUND TO SPOIL MY PLANS!

OKAY, HONEY I'LL GIVE YOU FIFTEEN MINUTES. THEN I'M COMING IN--



AND A MOMENT LATER...

A REPORTER, EH? YOU ARE CURIOUS ABOUT MY PICTURES, I SUPPOSE? WELL, I CAN SPARE TEN MINUTES. COME IN, WILL YOU PLEASE?

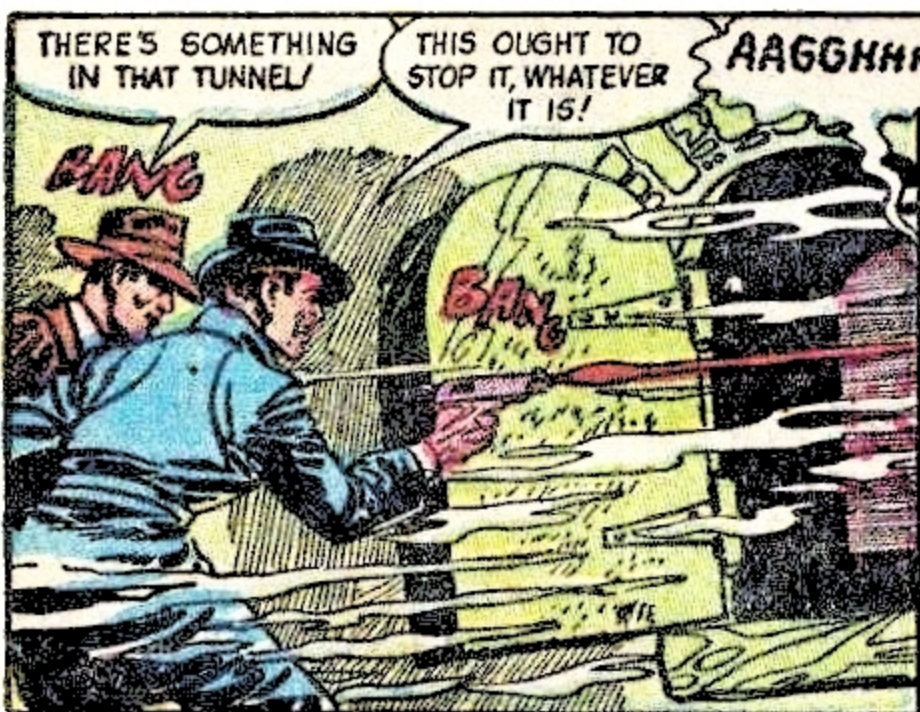
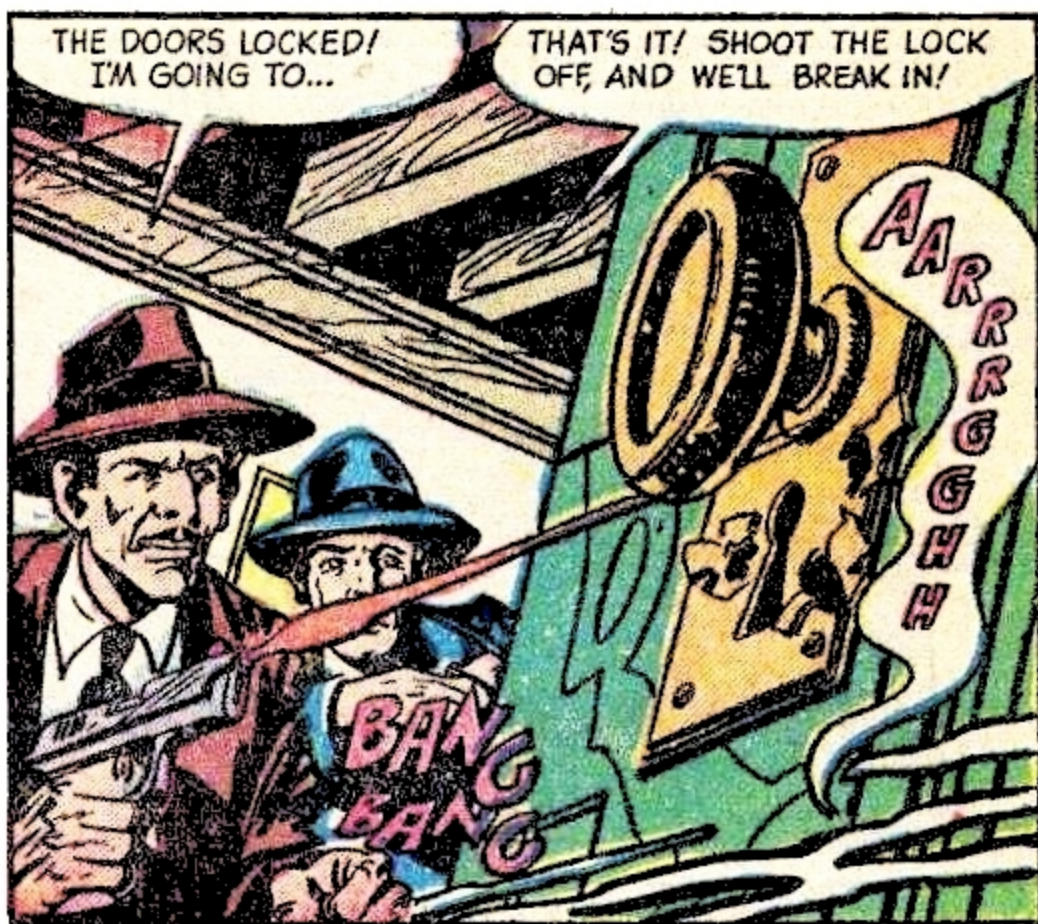


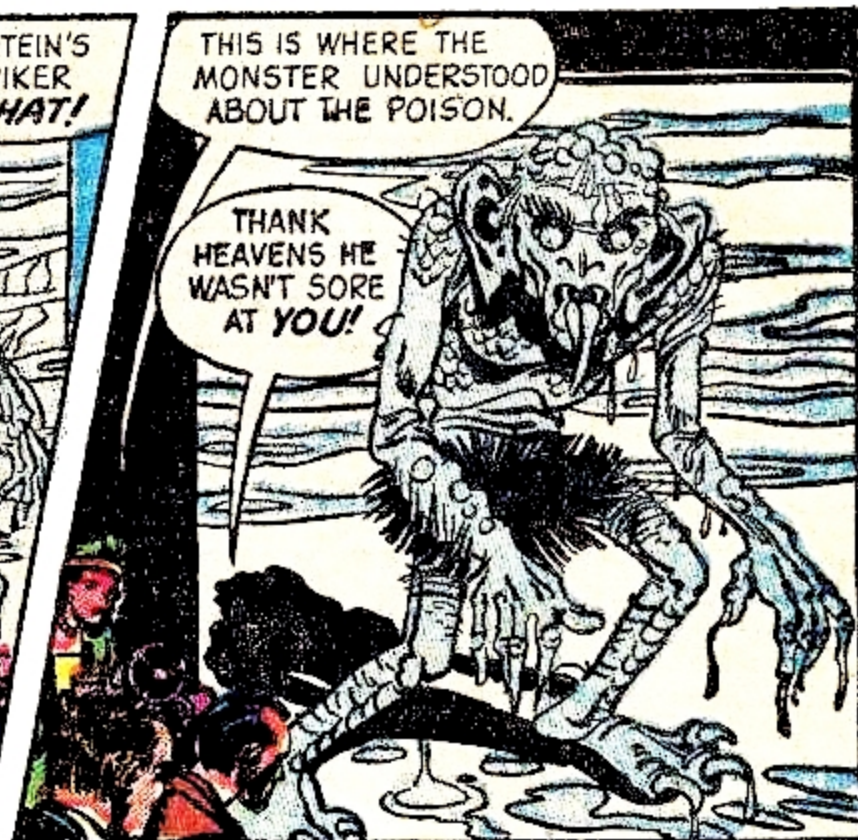
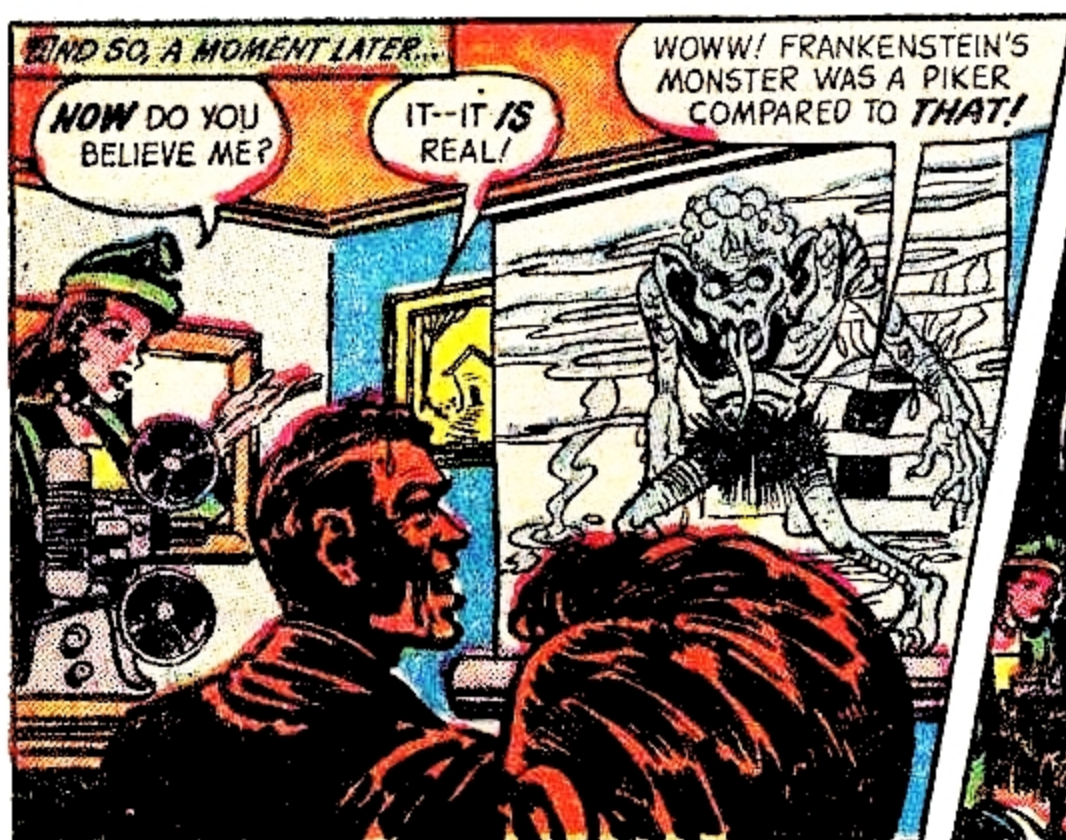
IF SHE DOESN'T COME OUT ON TIME--WE'RE GOING AFTER HER. I DON'T LIKE THIS PLACE!

I KNOW WHAT YOU MEAN!









THE END