

WATCH DAY

WEDNESDAY, AUGUST 26 | 8PM

PRESENTED BY



Metro United Way

OSCAR JIMENEZ



VS





OFFICIAL PARTNER OF



**Prosource® helps companies large and small optimize processes, reduce costs, and drive profits through industry-leading Office Equipment, Document Automation, and Technology Solutions, delivered with an unmatched customer experience.**

**[totalprosource.com](http://totalprosource.com) | 888.698.0763**

**Cincinnati | Dayton | Louisville | Lexington | Huntington | Charleston**

# IN THIS ISSUE

## **GAME PREVIEW 04**

'Confidence has grown' for LouCity on a familiar August streak

## **TEAM ROSTERS 05**

A look at team rosters for Louisville City FC and Indy Eleven

## **LYNN FAMILY STADIUM 06**

Key details about LouCity's new home

## **EASTERN CONFERENCE STANDINGS 07**

Where LouCity currently stands in the Eastern Conference

## **JOHN HACKWORTH 08**

Meet Louisville City FC's head coach

## **LOUCITY STAFF 10-11**

Louisville City's Coaches, Front Office, Technical Staff, & Medical Staff

## **MEET THE TEAM 13-17**

Player profiles for every athlete

## **SCHEDULE 20**

A full rundown of our 2020 reschedule updated with wins and losses

## **YOUTH CLUB PARTNERS 25**

A listing of Louisville City's youth soccer club partners

## **COMMUNITY AND CHAMBER PARTNERS 28**

A listing of Louisville City's business and civic partners



## 'CONFIDENCE HAS GROWN' FOR LOUCITY ON A FAMILIAR AUGUST STREAK

*By Maggie Wesley*

Louisville City FC carries a three-game unbeaten streak into Wednesday's 8 p.m. meeting with rival Indy Eleven, begging the question this time of year: Is another August turnaround in the works?

In 2018, LouCity went 3-1-3 this same month en route to a second straight USL title. Last year, the boys in purple limped into August with work to be done to secure a playoff spot. They went 4-1-0, fueling a run back to the USL Championship's Final.

"I go back to the fact that this group constantly wants to improve," said coach John Hackworth. "When we have the idea to come off a performance and look to improve on it and then apply it, I think that's what really shows that our growth continually gets better as the season goes on.

... "I think we have learned how to adjust to our fantastic digs at Lynn Family Stadium and we will have to see if we can build on that."

At one point 1-3 after the USL restarted in July, LouCity is 2-0-1 this month with a 1-1 draw against Indy Eleven (Aug. 8), 2-0 win over Loudoun United FC (Aug. 15) and 4-1 victory most recently against Sporting KC II (Aug. 19).

Finally, LouCity's players say, they're responding to the type of pressure that comes with playing for such a successful club.

"I think we had a tough start in the production," said outside back Oscar Jimenez. "Goals weren't being scored, but if you look back at the stats and all the numbers, we're getting shots off, we're getting crosses off, and we're not hitting the target very much. I think that's getting better, and it takes game by game to get better.

"...In any season, some teams start off slow and some start out fast. This year we started out a bit slow. It's not in production. It's in confidence."

August concludes with two key contests inside the USL's Group E play. On Wednesday, with its 19 points, first-place Indy visits Lynn Family Stadium. The boys in purple go back on the road for the first time since the restart on Saturday versus second-place Saint Louis FC, which has tallied 14 points.

LouCity has 13 points with a game in hand over the pair of clubs it's chasing for second in the group — a playoff spot.

"We always see it as there's no game you can take off or one game is more important than another," said midfielder and captain Paolo DelPiccolo. "They are all equally important and you need three points every time you play and sometimes you get it and sometimes you don't. The process has to stay the same."

"The biggest thing is adjusting what we've been doing the last couple games — the things we did right and the things we did wrong, just kind of following the process and keep getting better," Jimenez added "...Once we start scoring goals, like in Loudoun and last week we got four goals, it's just a confidence thing. The more you can score and hit the target, the more you can win. Confidence elevates the play.

"Right now, it's just the mentality. Confidence has grown on the team and I think we can carry on that momentum."



# TEAM ROSTERS



1	CHRIS HUBBARD	GK
3	ALEXIS SOUAHY	D
4	SEAN TOTSCH	D
5	JIMMY OCKFORD	D
6	WES CHARPIE	D
8	AKIL WATTS	D
9	LUKE SPENCER	F
10	BRIAN OWNBY	F
11	NIALL MCCABE	MF
13	CORBEN BONE	MF
14	ABDOU THIAM	F
15	PAT MCMAHON	D
17	CAMERON LANCASTER	F
19	OSCAR JIMENEZ	D
22	GEORGE DAVIS IV	F
27	NAPO MATSOSO	MF
29	ANTOINE HOPPENOT	MF
36	PAOLO DELPICCOLO	MF
39	BEN LUNDT	GK
42	JONATHAN GOMEZ	D
45	DAMIR BEGANOVIC	MF
61	ELIJAH WYNDER	MF
77	JASON JOHNSON	F
80	DEVON "SPEEDY" WILLIAMS	MF
91	MUAMER UGARAK	M

HEAD COACH | **JOHN HACKWORTH**



1	EVAN NEWTON	GK
2	WILLIAM CONNER ANTLEY	D
3	MACAULEY KING	D
4	TYLER GIBSON	MF
5	MITCHELL OSMOND	D
6	DREW CONNER	MF
7	AYOZE	D
8	MATTHEW WATSON	MF
9	CARL HAWORTH	9
12	PATRICK MCDONALD	MF
14	ILLIJA ILLIC	F
15	NEVEAL HACKSHAW	D
16	FELICIEN DUMAS	D
17	NICK MOON	F
18	JEREMY RAFANELLO	D
19	KENNEY WALKER	MF
20	KARL OUIMETTE	D
21	MATTHEW ROOU	MF
22	CAMERON LINDLEY	MF
23	TYLER PASHER	F
24	YEFERSON CONTRERAS	MF
25	MATTHEW SENANOU	D
27	ALEXANDER SVETANOFF	F
29	PATRICK BARRETT	D
30	ANDREW CARLETON	MF

HEAD COACH | **MARTIN RENNIE**



/LOUISVILLECITYFC



@LOUISVILLECITYFC



@LOUCITYFC



**WE  
NEED  
TO BE** **UNITED** *NOW MORE THAN EVER*



Just as LouCity players work together on the field, we work together in innovative ways with businesses, individuals, nonprofits and government orgs to empower individuals and families in our community to achieve their fullest potential.

We mean it when we say that with your help, we will create a better – more equitable future for all – right here at home!

***Go LouCity!***

[metrounitedway.org/2020](http://metrounitedway.org/2020)



**Metro United Way**

# WELCOME TO LYNN FAMILY STADIUM



The \$65 million stadium sits on a 10-acre parcel in the Butchertown neighborhood east of downtown. Normal capacity is 15,304, and the venue could range up to 25,000 for concerts. Unique to Lynn is a 72-foot Modelo bar in the open end, believed to be the longest of its kind in Kentucky. The jumbotron ranks second in size behind only Churchill Downs' Big Board.

The natural surface is made up of Tahoma 31 Bermuda overseeded with rye, and it can remain green year round thanks to a sub-air system that removes excessive moisture, but can also blow hot or cold air to keep grass at an ideal temperature. The lines measure 120 feet by 80, a major upgrade from the 105 by 75 pitch at LouCity's former home, Louisville Slugger Field.



LouCity has ensured its late founder's legacy lives on within the club's new home. Architect and philanthropist Wayne Estopinal, who brought pro soccer to town, is the namesake behind the closed end of Lynn Family Stadium, the standing supporter zone. Estopinal, whose firm also designed the University of Louisville's similarly named Lynn Stadium, died in a November 2018 plane crash at age 63.



# EASTERN CONFERENCE GROUP STANDINGS

GROUP E	GP	W	L	D	GF	GA	GD	PTS
INDY ELEVEN	9	6	2	1	15	7	8	19
SAINT LOUIS FC	9	4	3	2	12	10	2	14
LOUISVILLE CITY FC	8	4	3	1	11	8	3	13
SPORTING KANSAS CITY II	9	3	5	1	11	14	-3	10

GROUP F	GP	W	L	D	GF	GA	GD	PTS
PITTSBURGH RIVERHOUNDS SC	9	5	3	1	22	8	14	16
HARTFORD ATHLETIC	7	5	1	1	16	11	5	16
NEW YORK RED BULLS II	8	2	6	0	12	15	-3	6
LOUDOUN UNITED FC	7	1	4	2	6	14	-8	5
PHILADELPHIA UNION II	6	1	4	1	6	20	-14	4

GROUP G	GP	W	L	D	GF	GA	GD	PTS
BIRMINGHAM LEGION FC	9	5	1	3	16	7	9	18
CHARLOTTE INDEPENDENCE	7	2	2	3	11	13	-2	9
NORTH CAROLINA FC	6	2	3	1	4	8	-4	7
MEMHPIS 901 FC	8	1	4	3	11	17	-6	6

GROUP H	GP	W	L	D	GF	GA	GD	PTS
TAMPA BAY ROWDIES	9	6	0	3	16	6	10	21
CHARLESTON BATTERY	8	4	2	2	13	8	5	14
ATLANTA UNITED 2	11	1	7	3	13	22	-9	6
THE MIAMI FC	6	1	3	2	9	15	-6	5



# JOHN HACKWORTH

Louisville City Football Club coach John Hackworth was hired in the middle of the 2018 season and promptly led the Club to its second USL Cup championship, completing the first back-to-back USL Cup titles in modern USL history.

Hackworth was hired on Aug. 2, 2018, taking over for previous coach James O'Connor who was hired with Orlando City of the MLS. After O'Connor left, Louisville City continued its season as a player-led team until Hackworth took over mid-August. Under Hackworth's direction, LouCity closed out the regular season well and then rolled through the 2018 USL playoffs with four impressive wins – outscoring the four playoff teams in their path 12-2.

“Hack came in with an impressive amount of experience and success throughout his career developing the abilities of some of our country's most exciting prospects,” Louisville City FC President Brad Estes said. “In addition, his sharp eye for talent and ability to develop elite players, we were impressed with his ability to successfully lead our Club with a remarkable humility and focus down the stretch of the 2018 season. He was able to quickly establish himself as the lead of the group that was already assembled and then add new players who complimented the team's tremendous talent.”

By the start of the 2018 Playoffs, Hackworth had molded the squad into a dominant force. Louisville City beat Indy Eleven 4-1, rolled over the Bethlehem Steel 2-0 and then crushed the New York Red Bulls 5-1 to make the USL Cup Final. Hackworth and Louisville City captured the club's second star with a 1-0 win over West Champion Phoenix Rising.

After the club conducted an international search for its next leader, Hackworth is Louisville City's second-ever head coach. The 48-year-old native of Dunedin, Fla., signed a contract spanning through the 2022 season.



“Those that know him have applauded his coaching acumen, but his character is what we are most excited about as we take Louisville City FC forward,” Estes said of Hackworth.

Prior to Louisville City, Hackworth had been in charge of the U.S. U-17 Men's National Team since 2015 and has served as an assistant to the U.S. Men's National Team since the beginning of this year. An experienced coach at the national level, Hackworth began with U.S. Soccer in 2002 when he first served as an assistant to then-U.S. U-17 Men's National Team head coach John Ellinger. Hackworth would go on to succeed Ellinger and lead the U-17's to finishes in the quarterfinals of the 2005 FIFA U-17 World Cup and Round of 16 in the 2007 FIFA U-17 World Cup. Following his time in charge of the U-17's, Hackworth also served as the inaugural Technical Director of the U.S. Soccer Development Academy.

Outside of his time with U.S. Soccer, Hackworth's experience extends to both the collegiate and professional levels of the game. He began as an assistant coach for the Wake Forest University women's and men's teams in 1993 and 1994. Hackworth was then named the head coach at the University of South Florida in 1998, where he led the Bulls to two NCAA Tournament Appearances.

In Major League Soccer, Hackworth spent five years with the Philadelphia Union, serving as the club's Youth Development Coordinator from 2009-12, and head coach from 2012-14 before returning to take charge of the U.S. U-17 Men's National Team.



CENTERED ON YOU



# YOU DON'T NEED AN AGENT TO GO TO THE PROS.

**THE BAPTIST HEALTH SPORTS MEDICINE TEAM IS RIGHT HERE FOR YOU.** Our physicians, therapists and athletic trainers are pros at helping you get back in action and perform at your best. We provide complete sports medicine services, including sports medicine-trained physicians for both surgical and non-surgical cases, physical therapy, and athletic training services that operate out of one convenient location.

OFFICIAL SPORTS MEDICINE  
PROVIDER FOR LOUISVILLE CITY FC



**BAPTIST HEALTH®**

LOUISVILLE

Corbin | Floyd | La Grange | Lexington | Louisville | Madisonville | Paducah | Richmond



[BaptistHealth.com](https://www.BaptistHealth.com)

# DANNY CRUZ

ASSISTANT COACH | PETERSBURG, VA



10-year professional veteran Danny Cruz was John Hackworth's first coaching hire at Louisville City. Cruz has known Hackworth since Cruz was 16, playing for Hackworth as part of elite youth development teams. Cruz, a native of Petersburg, Va., was a successful pro, playing 137 career games at the MLS level. The former UNLV star was a third round draft pick in the 2009 MLS SuperDraft before playing with Houston Dynamo, D.C. United and Philadelphia Union. A fiery competitor, Cruz brings intensity, experience and tactical knowledge to bolster Hackworth's technical staff.

# SCOTT BUDNICK

GOALKEEPER COACH | LOUISVILLE, KY



After John Hackworth brought in Budnick as interim goalkeeper coach in August 2018, the move went so well that he was offered the permanent position on Jan. 7, 2019. A wealth of goalkeeping knowledge, Budnick's tactical mind and steady demeanor imbues the goalkeepers union with confidence and courage. Budnick gained his knowledge through decades of experience at William and Mary, with the Richmond Kickers and Hampton Roads Hurricanes in the USISL and playing stints in English and German as well as time with three clubs in the MLS (Tampa Bay Mutiny, Miami Fusion and New England Revolution). Prior to LouCity, Budnick had a successful law while coaching locally.

## TECHNICAL STAFF

### STUART WRIGHT

Director of Sports Performance and  
Head Athletic Trainer

### BEN HULSMAN

Team Equipment Manager

## MEDICAL STAFF

### MARK PUCKETT, MD

Team Physician

### W. MICHAEL HUGHES JR, DO

Team Physician

### NICHOLAS KENNEY, MD

Team Orthopedic Surgeon

### CHELSEA POOLE, MS

Assistant Athletic Trainer

# FRONT OFFICE

**JOHN NEACE**

Chairman

**JAMES O'CONNOR**

Executive Vice President  
of Development

**SHERYL MOORE**

Staff Accountant

**PATRICK STEWART**

Partnership  
Development Director

**DYLAN TERRY**

Partnership  
Development Manager

**KRISTEN WALLACE**

Academy Executive  
Director

**BROCK HICKAM**

Junior Academy Director  
for Boys and Girls

**DAVE WALKOVIC**

Manager of Ticket  
Operations

**GABE SCHENKER**

Business Development  
Specialist

**MIREN ZUBILLAGA**

Business Development  
Specialist

**BRITTNEY GORTER**

Director of Marketing

**RACHEL REGENAUER**

Graphic Designer

**BRAD ESTES**

President

**DAVENA VOWELS**

Vice President of  
Operations

**RUSTY FAZIO**

Director of Information  
Technology

**PAT DENBOW**

Director or Partner  
Strategy

**EIMAN ZUBERI**

Partnership Fulfillment  
Coordinator

**SIMON BIRD**

Louisville City FC  
Academy Director

**THABANE SUTU**

Academy Goalkeeping  
Director

**BRENDA MORAN**

Business Development  
Specialist

**TERRENCE SPENCE**

Business Development  
Specialist

**JONATHAN LINTNER**

Senior Director of PR  
and Communications

**COLE BOLLINGER**

Social Media Manager

**MITCH RIED**

Vice President of Sales  
and Marketing

**CARLY BROWN**

Director of Finance

**JON RYAN NEACE**

Information Technology  
Technician

**BRAD GORDON**

Partnership  
Development Director

**MARIO SANCHEZ**

Youth Academy Director

**TIM NOWAK**

Racing Louisville FC  
Academy Director

**CRAIG JONES**

Academy Director of  
Soccer Operations

**JARROD ROCKHOLD**

Business Development  
Specialist

**BRAD GRAHAM**

Membership  
Development Specialist

**EVAN FLOYD**

Partnerships and  
Community Relations  
Executive

**KYLE SPRIGGS**

Creative Content  
Producer



**TOP 5**  
**COLLEGE IN**  
**KENTUCKY**  
(College Choice 2017, 2018)

# LOUISVILLE'S DOWNTOWN UNIVERSITY

Out to change the world, starting in our own backyard.



ON CAMPUS | ONLINE | [SPALDING.EDU](http://SPALDING.EDU)



GK  
**CHRIS HUBBARD**

#1

2019 SEASON: 24 GP | 24 GS - 2,220 MIN | 78 SV | 29 GA | 5 CS  
LAST MATCH: vs STL | 90 MIN | 1 GA | 1 SV



D  
**ALEXIS SOUAHY**

#3

2019 SEASON: 24 GP | 19 GS - 1,614 MIN | 1 G | 2 A | 2 YC | 1 RC  
LAST MATCH: vs SKC | 90 MIN | 80% PA | 5 CL | 2 TK



D  
**SEAN TOTSCH**

#4

2019 SEASON: 33 GP | 26 GS - 2,365 MIN | 1 G | 1 A | 88 CL | 2 YC  
LAST MATCH: vs SKC | 90 MIN | 85.4% PA | 6 CL | 1 TK | 1 YC



D  
**JIMMY OCKFORD**

#5

2019 SEASON: 16 GP | 16 GS - 1,422 MIN | 2 G | 66 CL | 4 YC  
LAST MATCH: vs SKC | 11 MIN (SUB)



D  
**WES CHARPIE**

#6

2019 SEASON: 28 GP | 28 GS - 2,392 MIN | 1 A | 63 CL | 8 YC  
LAST MATCH: vs IND | 90 MIN | 82.2% PA | 2 CL | 1 TK



**D**  
**AKIL WATTS**

#8

2019 SEASON: 4 GP | 3 GS - 236 | 8 CL

LAST MATCH: vs SKC | 1 MIN (SUB)



**F**  
**LUKE SPENCER**

#9

2019 SEASON: 35 GP | 20 GS - 2,004 MIN | 10 G | 4 A | 2 YC

LAST MATCH: vs SKC | 11 MIN (SUB) | 100% PA



**F**  
**BRIAN OWNBY**

#10

2019 SEASON: 24 GP | 20 GS - 1,849 MIN | 2 G | 5 A | 4 YC | 1 RC

LAST MATCH: vs SKC | 45 MIN (SUB) | 69.2% PA | 1 SH

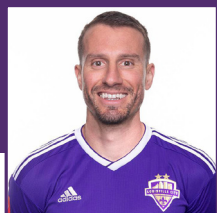


**MF**  
**NIALL McCABE**

#11

2019 SEASON: 33 GP | 32 GS - 2,924 MIN | 3 G | 6 A | 2 YC | 1 RC

LAST MATCH: vs SKC | 90 MIN | 81.8% PA | 1 SH | 3 KP



**MF**  
**CORBEN BONE**

#13

2019 SEASON: GP 6 | GS 2 - 186 MIN

LAST MATCH: vs SKC | 90 MIN | 73.3% PA | 2 G | 2 SH | 2 KP



**F**  
**ABDOU THIAM**

**#14**

2019 SEASON: 26 GP | 12 GS - 1,236 MIN | 3 G | 4 A | 4 YC  
LAST MATCH: vs LDN | 12 MIN (SUB) | 50% PA



**D**  
**PAT McMAHON**

**#15**

2019 SEASON: 17 GP | 10 GS - 1,141 MIN | 1 G | 2 A | 30 CL | 4 YC  
LAST MATCH: vs SKC | 89 MIN | 69% PA | 2 CL | 3 TK



**F**  
**CAMERON LANCASTER**

**#17**

2019 SEASON: 18 GP | 7 GS - 730 MIN | 5 G | 1 A  
LAST MATCH: vs SKC | 45 MIN | 66.7% PA | 1 G | 1 A | 3 SH | 2 KP



**D**  
**OSCAR JIMENEZ**

**#19**

2019 SEASON: 37 GP | 37 GS - 3,341 MIN | 1 G | 7 A | 59 CL | 4 YC  
LAST MATCH: vs SKC | 71 MIN | 84.4% PA | 2 CL | 3 TK | 1 YC



**F**  
**GEORGE DAVIS IV**

**#22**

2019 SEASON: 32 GP | 12 GS - 1,215 MIN | 3 G | 2 A | 1 YC  
LAST MATCH: vs SKC | 24 MIN (SUB) | 75% PA | 1 CL | 2 KP





MF  
**NAPO MATSOSO**

#27

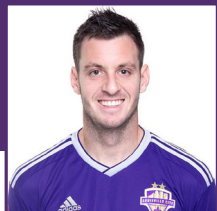
2019 SEASON: 23 GP | 20 GS - 1,701 MIN | 5 G | 1 A | 4 YC | 1 RC  
LAST MATCH: vs SKC | 90 MIN | 77.4% PA | 1 G | 1 A | 2 SH | 1 KP



F  
**ANTOINE HOPPENOT**

#29

2019 SEASON: 30 GP | 20 GS - 1,978 MIN | 5 G | 2 A | 4 YC  
LAST MATCH: vs SKC | 79 MIN | 65.2% PA | 2 A | 1 SH | 2 KP



MF  
**PAOLO DePICCOLO**

#36

2019 SEASON: 17 GP | 10 GS - 915 MIN | 2 G | 3 YC  
LAST MATCH: vs SKC | 90 MIN | 69.6% PA | 1 KP | 3 CL | 1 TK



GK  
**BEN LUNDT**

#39

2019 SEASON: 12 GP | 12 GS - 1,080 MIN | 27 SV | 11 GA | 4 CS  
LAST MATCH: vs SKC | 90 MIN | 1 GA | 1 SV



D  
**JONATHAN GOMEZ**

#42

2019 SEASON: N/A  
LAST MATCH: vs SKC | 19 MIN (SUB) | 71.4% PA



MF  
**DAMIR BEGANOVIC**

#45

2019 SEASON: N/A

LAST MATCH: N/A



MF  
**ELIJAH WYNDER**

#61

2019 SEASON: N/A

LAST MATCH: vs LDN | 23 MIN (SUB) | 100% PA | 1 SH



F  
**JASON JOHNSON**

#77

2019 SEASON: 15 GP | 5 GS - 458 MIN | 3 G | 1 A | 7 KP

LAST MATCH: vs LDN | 24 MIN (SUB) | 75% PA | 1 SH | 2 KP

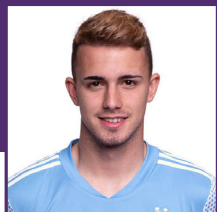


MF  
**DEVON "SPEEDY" WILLIAMS**

#80

2019 SEASON: 30 GP | 30 GS - 2,760 MIN | 1 G | 1 A | 7 YC

LAST MATCH: vs SKC | 89 MIN | 88.3% PA | 3 CL | 3 TK



GK  
**MUAMER UGARAK**

#91

2019 SEASON: N/A

LAST MATCH: N/A

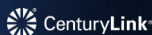
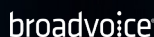


Kick off your cloud technology journey with Virtual Telecomm.

Cloud Phones • SD-WAN • Internet • Security



Thank you to the following carriers for partnering with Virtual Telecomm & Louisville City FC.



virtualtelecomm.com 502.400.8600

**WE LOVE LOUISVILLE.  
WE LOVE SOCCER.  
WE LOVE LOU CITY.**

**LISTEN TO THE GAMES LIVE:**



LOUISVILLE CITY FOOTBALL CLUB

# 2020 SCHEDULE

**3.7 @ NORTH CAROLINA FC W 1-0**

**7.12 PITTSBURGH RIVERHOUNDS SC L 1-3**

**7.18 SAINT LOUIS FC L 0-1**

**7.25 SPORTING KC II W 1-0**

**7.29 SPORTING KC II L 1-2**

**8.8 INDY ELEVEN D 1-1**

**8.15 LOUDOUN UNITED FC W 2-0**

**8.19 SPORTING KC II W 4-1**

**8.26 INDY ELEVEN 8:00 PM**

**8.29 @ SAINT LOUIS FC 8:00 PM**

**9.5 @ INDY ELEVEN 7:00 PM**

**9.12 SAINT LOUIS FC 7:30 PM**

**9.16 @ INDY ELEVEN 7:00 PM**

**9.19 MEMPHIS 901 FC 7:30 PM**

**9.26 @ SAINT LOUIS FC 8:00 PM**

**10.3 SPORTING KC II 7:30 PM**

**HOME**

**AWAY**

**502-LOU-CITY**



**LOUCITY.COM**





# RACING LOUISVILLE FC

TAKES THE PITCH FOR THEIR  
INAUGURAL SEASON IN 2021! DON'T  
MISS YOUR CHANCE TO SEE TEAM  
USA STARS SUCH AS ROSE LAVELLE,  
MEGAN RAPINOE, AND ALEX  
MORGAN AT LYNN FAMILY STADIUM.

SECURE YOUR SEASON TICKETS  
STARTING AT \$198 TODAY AT  
**RACINGLOUFC.COM**





# VOLUFORMS

PRINT • PROMOTE • DISTRIBUTE

*Putting Your Best Brand Forward.*



[voluforms.com](http://voluforms.com)  

**zies**  
**yers • Flags**  
**s • Bags • Stickers**  
**ners • Menus • Glassware**  
**s • Rack Cards • Bags • Stickers**  
**ns • Uniforms • Planners • Hats • Flyers**  
**Branded Wearables • Brochures • Door Han**  
**arking Passes • Wristbands • Bandanas •**  
**ngers • Rack Cards • Bags • Stickers • Key**  
**ow Decals • Game Programs • Uniforms •**  
**ks • Bags • Stickers • Keychains • Magnet**  
**Window Decals • Game Programs •**  
**Backpac**



# LOUISVILLE CITY FC OFFICIAL BROADCAST PARTNER

WATCH THE 2020 SEASON GAMES ON THESE STATIONS



**NEW! LIVE STREAMING GAMES  
ON WDRB NOW APP**

*\*Download for your Big Screen or Tablets*



**WDRB IN THE MORNING**  
THE SOURCE

# YOUTH CLUB PARTNERS

Louisville City FC is proud to be a vibrant, active member of our community, and to partner with many of our region's Youth Soccer Clubs through our Youth Partner Program. Through this program we hope to aid in the development of our Youth Partner Clubs by offering a plethora of incentives and unprecedented, up-close access to a professional club. We're proud to call the following organizations our partners:



**ATLETICO FLAMES**



**CLARK COUNTY  
SOCCER ASSC.**



**FALLS CITY  
SOCCER CLUB**



**KENTUCKY FIRE  
JUNIORS**



**LARUE COUNTY**



**LOUISVILLE SOCCER**



**MOCKINGBIRD  
VALLEY SOCCER**



**OHIO ELITE**



**OLDHAM SOCCER  
CLUB**



**SOCCER SHOTS**



**SOUTHERN INDIANA  
UNITED**



**SPENCER COUNTY**

Interested in becoming a Louisville City FC Youth Club Partner?  
Contact Dylan Terry at [dterry@louisvillecityfc.com](mailto:dterry@louisvillecityfc.com).

BROUGHT TO YOU BY  
 **Visionworks**  
DOCTORS OF OPTOMETRY  
DR. MARK LYNN & ASSOCIATES, PLLC

# Kentucky's insurance company. If you're keeping score.



Things can change in an instant with one kick — and in life. So it's nice to know that when you experience loss from a storm or accident, Kentucky Farm Bureau Insurance will stand behind you with the winning service you deserve. Find your local agent at [kyfb.com](http://kyfb.com).

**KENTUCKY FARM BUREAU**



**INSURANCE**

**BIG ON COMMITMENT.®**



# NEW ARRIVALS!



COMMONWEALTH  
CREDIT UNION

*Cheering*  
**YOU ON!**

[WeCUDifferently.com](http://WeCUDifferently.com)

## COMMUNITY PARTNERS

Algood Food Co.	Limestone Title
All Pro Satellite	Louisville Soccer
Atlas Companies	Midwest Metals
Atria Senior Living	Mindel Scott
Automated Living	Museum Bees
Belfor Property Restoration	Oasis Solutions Group
Bumper to Bumper	Office Resources, Inc.
C&I	Premier Health & Fitness
Dant Clayton	PremPack
DD Williamson	Priority Radiology
DMLO	RegenEn Solar
First Kentucky Trust	Regions Bank
Hyland Insurance	Thomas Car Wash
Insuramax	Vendome Copper Works
Ladder Now, LLC	Walker Mechanical

## CHAMBER AND ASSOCIATION PARTNERS

Jeffersontown  
Louisville Independent Business Alliance  
Main Street Association  
Nulu Business Association  
Riverport Business Association  
St. Matthews Chamber

# SIGNATURE HEALTHCARE

---

## JOIN OUR TEAM

NURSES | C.N.A'S  
NURSE PRACTITIONERS  
DIETARY STAFF

---

COMPETITIVE WAGES / FLEXIBLE SCHEDULES  
OUTSTANDING BENEFITS / GROWTH OPPORTUNITIES

---

8 SKILLED NURSING CENTERS  
SERVING THE LOUISVILLE MARKET

---

Apply On-Line at [LTCRevolution.com](http://LTCRevolution.com)  
TEXT "NEWJOB" TO 97211



# HELP FOR THE *Holidays*



2020 has been a challenging year for many, but especially for families who have a child with special medical needs.



**We need your help to make this holiday season special for Kosair Kids® and their families.**

Purchase a gift from our Amazon Wish List:

**[bit.ly/KC\\_wishlist](https://bit.ly/KC_wishlist)**



Donate to the Kosair Kid Experience Fund:

**[kosair.org/celebrate](https://kosair.org/celebrate)**

