

WATGCH DAY

SUNDAY, JULY 12 | 5PM

PRESENTED BY

Messer
We Are Building.

HC HARMON
CONSTRUCTION, LLC

NIAL MCCABE





OFFICIAL PARTNER OF



Prosource® helps companies large and small optimize processes, reduce costs, and drive profits through industry-leading Office Equipment, Document Automation, and Technology Solutions, delivered with an unmatched customer experience.

totalprosource.com | 888.698.0763

Cincinnati | Dayton | Louisville | Lexington | Huntington | Charleston

IN THIS ISSUE

GAME PREVIEW 04

McCabe out to make Lynn Family Stadium Opener "memorable"

TEAM ROSTERS 05

A look at team rosters for Louisville City FC and Pittsburgh Riverhounds

LYNN FAMILY STADIUM 06

Louisville City Breaks 5,000 Season Tickets on Day One of Public Sale

EASTERN CONFERENCE STANDINGS 07

Where LouCity currently stands in the Eastern Conference

JOHN HACKWORTH 08

Meet Louisville City FC's head coach

LOUCITY STAFF 10-11

Louisville City's Coaches, Front Office, Technical Staff, & Medical Staff

MEET THE TEAM 13-17

Player profiles for every athlete

SCHEDULE 20

A full rundown of our 2020 reschedule updated with wins and losses

YOUTH CLUB PARTNERS 23

A listing of Louisville City's youth soccer club partners

COMMUNITY AND CHAMBER PARTNERS 25

A listing of Louisville City's business and civic partners



MCCABE OUT TO MAKE LYNN FAMILY STADIUM OPENER "MEMORABLE"

By Ysabella Leon

The return to play will be a special for all Louisville City FC players itching to open Lynn Family Stadium at 5 p.m. Sunday against Pittsburgh Riverhounds SC. But for Niall McCabe, the club's only player from its inaugural 2015 season to have remained on the roster throughout LouCity's history, there's a different ring to it.

The attacking midfielder signed with LouCity at its beginning and has gone on to become a face of the franchise, taking part in five straight Eastern Conference Final appearances in addition to two USL titles in 2017 and 2018.

McCabe, who played a full 90 minutes in LouCity's only other game this season, a 1-0 victory March 7 at North Carolina FC, recognizes what Sunday will mean in the bigger picture. With the backdrop of the stadium's debut, an ESPN2 audience and supporters back in the stands, he's also viewing the moment through a smaller lens.

"I've just been training hard, and I'm looking forward to it, really," McCabe said. "It's going to be the culmination of a lot of hard work by a lot of people, so for sure it will be a special time. It's important for us to make sure we win and make it memorable."

McCabe, a model of consistency in the LouCity lineup, logged just short of 3,000 minutes played in 2019, when he scored three goals and completed 75.6% of his passes, most of those in the opponent's half of the pitch.

The 29-year-old Irishman's turned his efforts to another challenge as of late: working through the COVID-19 pandemic.

"We've been pretty professional in how we've approached it in terms of not going anywhere unnecessary," McCabe said. "The emphasis for us is really hammering home that now is probably the most important time to stay professional and limit what we're doing."

In the days leading up to their first home game, LouCity coach and sporting director John Hackworth has continued to emphasize the importance of this team's experience. Consider McCabe, who arrived out of Georgia's Young Harris College and settled in Louisville to start his family, the embodiment of that.

"I think, for Niall, this is just part of his path here at Louisville City," Hackworth said. "He has seen it all. He's done it all, and he is very proud of this moment, opening Lynn Family Stadium."

And as for seeking out a win Sunday? McCabe sees himself, and his teammates, raising their games inside the new venue.

"I really think it's just that kind of next level of professionalism," he said. "It's a world-class facility, and when you're in and around that environment, it kind of just gives you that extra feeling of this is what professional football should be like."

TEAM ROSTERS



1	CHRIS HUBBARD	GK
3	ALEXIS SOUAHY	D
4	SEAN TOTSCH	D
5	JIMMY OCKFORD	D
6	WES CHARPIE	D
7	MAGNUS RASMUSSEN	MF
8	AKIL WATTS	D
9	LUKE SPENCER	F
10	BRIAN OWNBY	F
11	NIALL MCCABE	MF
13	CORBEN BONE	MF
14	ABDOU THIAM	F
15	PAT MCMAHON	D
17	CAMERON LANCASTER	F
19	OSCAR JIMENEZ	D
22	GEORGE DAVIS IV	F
27	NAPO MATSOSO	MF
29	ANTOINE HOPPENOT	MF
36	PAOLO DELPICCOLO	MF
39	BEN LUNDT	GK
42	JONATHAN GOMEZ	D
45	DAMIR BEGANOVIC	MF
61	ELIJAH WYNDER	MF
80	DEVON "SPEEDY" WILLIAMS	MF
91	MUAMER UGARAK	M



1	DANNY VITIELLO	GK
2	MARK LINDSTROM	D
3	ROPAPA MENSAH	F
4	DANI ROVIRA	MF
5	JORDAN DOVER	D
6	XHELIL ASANI	D
7	RYAN JAMES	D
8	DAKOTA BARNATHAN	MF
9	ALBERT DIKWA	F
10	STEEVAN DOS SANTOS	F
11	KENARDO FORBES	MF
12	DANNY GRIFFIN	MF
14	ROBBIE MERTZ	MF
15	ANTHONY VELARDE	MF
16	MARK FORREST	F
17	THOMAS VANCAEYEZEELE	D
18	TOMAS GOMEZ	GK
20	TONY WALLS	D
21	PATRICK BUNK-ANDERSEN	D
22	HUNTER ASHWORTH	D
24	ANTHONY MWEMBIA	GK
33	LUKAS FERNANDES	F
34	SKYLAR THOMAS	D

HEAD COACH | **JOHN HACKWORTH**

HEAD COACH | **BOB LILLEY**



/LOUISVILLECITYFC



@LOUISVILLECITYFC



@LOUCITYFC

WELCOME TO LYNN FAMILY STADIUM



The \$65 million stadium sits on a 10-acre parcel in the Butchertown neighborhood east of downtown. Normal capacity is 15,304, and the venue could range up to 25,000 for concerts. Unique to Lynn is a 72-foot Modelo bar in the open end, believed to be the longest of its kind in Kentucky. The jumbotron ranks second in size behind only Churchill Downs' Big Board.

The natural surface is made up of Tahoma 31 Bermuda overseeded with rye, and it can remain green year round thanks to a sub-air system that removes excessive moisture, but can also blow hot or cold air to keep grass at an ideal temperature. The lines measure 120 feet by 80, a major upgrade from the 105 by 75 pitch at LouCity's former home, Louisville Slugger Field.



LouCity has ensured its late founder's legacy lives on within the club's new home. Architect and philanthropist Wayne Estopinal, who brought pro soccer to town, is the namesake behind the closed end of Lynn Family Stadium, the standing supporter zone. Estopinal, whose firm also designed the University of Louisville's similarly named Lynn Stadium, died in a November 2018 plane crash at age 63.



EASTERN CONFERENCE GROUP STANDINGS

GROUP E	GP	W	D	L	GF	GA	GD	PTS
INDY ELEVEN	2	2	0	0	6	2	4	6
SAINT LOUIS FC	2	1	1	0	4	3	1	3
LOUISVILLE CITY FC	1	1	0	0	1	0	1	3
SPORTING KANSAS CITY II	1	0	1	0	1	2	-1	0

GROUP F	GP	W	D	L	GF	GA	GD	PTS
LOUDOUN UNITED FC	1	0	1	0	0	0	0	1
PHILADELPHIA UNION II	1	0	1	0	0	0	0	1
HARTFORD ATHLETIC	0	0	0	0	0	0	0	0
PITTSBURGH RIVERHOUNDS SC	0	0	0	0	0	0	0	0
NEW YORK RED BULLS II	1	0	1	0	0	1	-1	0

GROUP G	GP	W	D	L	GF	GA	GD	PTS
CHARLOTTE INDEPENDENCE	1	1	0	0	2	1	1	3
BIRMINGHAM LEGION FC	0	0	0	0	0	0	0	0
NORTH CAROLINA FC	1	0	1	0	0	1	-1	0
MEMHPIS 901	1	0	1	0	2	4	-2	0

GROUP H	GP	W	D	L	GF	GA	GD	PTS
TAMPA BAY ROWDIES	2	2	0	0	3	1	2	6
CHARLESTON BATTERY	1	1	0	0	-	-	1	3
ATLANTA UNITED 2	2	0	2	0	0	2	-2	0
THE MIAMI FC	1	0	1	0	1	4	-3	0

JOHN HACKWORTH

Louisville City Football Club coach John Hackworth was hired in the middle of the 2018 season and promptly led the Club to its second USL Cup championship, completing the first back-to-back USL Cup titles in modern USL history.

Hackworth was hired on Aug. 2, 2018, taking over for previous coach James O'Connor who was hired with Orlando City of the MLS. After O'Connor left, Louisville City continued its season as a player-led team until Hackworth took over mid-August. Under Hackworth's direction, LouCity closed out the regular season well and then rolled through the 2018 USL playoffs with four impressive wins – outscoring the four playoff teams in their path 12-2.

"Hack came in with an impressive amount of experience and success throughout his career developing the abilities of some of our country's most exciting prospects," Louisville City FC President Brad Estes said. "In addition, his sharp eye for talent and ability to develop elite players, we were impressed with his ability to successfully lead our Club with a remarkable humility and focus down the stretch of the 2018 season. He was able to quickly establish himself as the lead of the group that was already assembled and then add new players who complimented the team's tremendous talent."

By the start of the 2018 Playoffs, Hackworth had molded the squad into a dominant force. Louisville City beat Indy Eleven 4-1, rolled over the Bethlehem Steel 2-0 and then crushed the New York Red Bulls 5-1 to make the USL Cup Final. Hackworth and Louisville City captured the club's second star with a 1-0 win over West Champion Phoenix Rising.

After the club conducted an international search for its next leader, Hackworth is Louisville City's second-ever head coach. The 48-year-old native of Dunedin, Fla., signed a contract spanning through the 2022 season.



"Those that know him have applauded his coaching acumen, but his character is what we are most excited about as we take Louisville City FC forward," Estes said of Hackworth.

Prior to Louisville City, Hackworth had been in charge of the U.S. U-17 Men's National Team since 2015 and has served as an assistant to the U.S. Men's National Team since the beginning of this year. An experienced coach at the national level, Hackworth began with U.S. Soccer in 2002 when he first served as an assistant to then-U.S. U-17 Men's National Team head coach John Ellinger. Hackworth would go on to succeed Ellinger and lead the U-17's to finishes in the quarterfinals of the 2005 FIFA U-17 World Cup and Round of 16 in the 2007 FIFA U-17 World Cup. Following his time in charge of the U-17's, Hackworth also served as the inaugural Technical Director of the U.S. Soccer Development Academy.

Outside of his time with U.S. Soccer, Hackworth's experience extends to both the collegiate and professional levels of the game. He began as an assistant coach for the Wake Forest University women's and men's teams in 1993 and 1994. Hackworth was then named the head coach at the University of South Florida in 1998, where he led the Bulls to two NCAA Tournament Appearances.

In Major League Soccer, Hackworth spent five years with the Philadelphia Union, serving as the club's Youth Development Coordinator from 2009-12, and head coach from 2012-14 before returning to take charge of the U.S. U-17 Men's National Team.



CENTERED ON YOU



YOU DON'T NEED AN AGENT TO GO TO THE PROS.

THE BAPTIST HEALTH SPORTS MEDICINE TEAM IS RIGHT HERE FOR YOU. Our physicians, therapists and athletic trainers are pros at helping you get back in action and perform at your best. We provide complete sports medicine services, including sports medicine-trained physicians for both surgical and non-surgical cases, physical therapy, and athletic training services that operate out of one convenient location.

OFFICIAL SPORTS MEDICINE
PROVIDER FOR LOUISVILLE CITY FC



BAPTIST HEALTH®

LOUISVILLE

Corbin | Floyd | La Grange | Lexington | Louisville | Madisonville | Paducah | Richmond



[BaptistHealth.com](https://www.BaptistHealth.com)

DANNY CRUZ

ASSISTANT COACH | PETERSBURG, VA



10-year professional veteran Danny Cruz was John Hackworth's first coaching hire at Louisville City. Cruz has known Hackworth since Cruz was 16, playing for Hackworth as part of elite youth development teams. Cruz, a native of Petersburg, Va., was a successful pro, playing 137 career games at the MLS level. The former UNLV star was a third round draft pick in the 2009 MLS SuperDraft before playing with Houston Dynamo, D.C. United and Philadelphia Union. A fiery competitor, Cruz brings intensity, experience and tactical knowledge to bolster Hackworth's technical staff.

SCOTT BUDNICK

GOALKEEPER COACH | LOUISVILLE, KY



After John Hackworth brought in Budnick as interim goalkeeper coach in August 2018, the move went so well that he was offered the permanent position on Jan. 7, 2019. A wealth of goalkeeping knowledge, Budnick's tactical mind and steady demeanor imbues the goalkeepers union with confidence and courage. Budnick gained his knowledge through decades of experience at William and Mary, with the Richmond Kickers and Hampton Roads Hurricanes in the USISL and playing stints in English and German as well as time with three clubs in the MLS (Tampa Bay Mutiny, Miami Fusion and New England Revolution). Prior to LouCity, Budnick had a successful law while coaching locally.

TECHNICAL STAFF

ANDREW DILALLO

Director of Soccer Operations

STUART WRIGHT

Director of Sports Performance and
Head Athletic Trainer

BEN HULSMAN

Team Equipment Manager

MEDICAL STAFF

MARK PUCKETT, MD

Team Physician

W. MICHAEL HUGHES JR, DO

Team Physician

NICHOLAS KENNEY, MD

Team Orthopedic Surgeon

CHELSEA POOLE, MS

Assistant Athletic Trainer

FRONT OFFICE

JOHN NEACE

Chairman

BRAD ESTES

President

MITCH RIED

Vice President of Sales
and Marketing

JAMES O'CONNOR

Executive Vice President
of Development

DAVENA VOWELS

Vice President of
Operations

CARLY BROWN

Director of Finance

SHERYL MOORE

Staff Accountant

RUSTY FAZIO

Director of Information
Technology

JON RYAN NEACE

Information Technology
Technician

PATRICK STEWART

Partnership
Development Director

PAT DENBOW

Director or Partner
Strategy

BRAD GORDON

Partnership
Development Director

DYLAN TERRY

Partnership
Development Manager

EIMAN ZUBERI

Partnership Fulfillment
Coordinator

MARIO SANCHEZ

Youth Academy Director

KRISTEN WALLACE

Academy Executive
Director

SIMON BIRD

Louisville City FC
Academy Director

TIM NOWAK

Racing Louisville FC
Academy Director

BROCK HICKAM

Junior Academy Director
for Boys and Girls

THABANE SUTU

Academy Goalkeeping
Director

CRAIG JONES

Academy Director of
Soccer Operations

DAVE WALKOVIC

Manager of Ticket
Operations

BRENDA MORAN

Business Development
Specialist

JARROD ROCKHOLD

Business Development
Specialist

GABE SCHENKER

Business Development
Specialist

TERRENCE SPENCE

Business Development
Specialist

BRAD GRAHAM

Membership
Development Specialist

JONATHAN LINTNER

Senior Director of PR
and Communications

EVAN FLOYD

Partnerships and
Community Relations
Executive

COLE BOLLINGER

Social Media Manager

BRITTNEY GORTER

Director of Marketing

RACHEL REGENAUER

Graphic Designer

KYLE SPRIGGS

Creative Content
Producer

TOP 5
COLLEGE IN
KENTUCKY
(College Choice 2017, 2018)

LOUISVILLE'S DOWNTOWN UNIVERSITY

Out to change the world, starting in our own backyard.



ON CAMPUS | ONLINE | SPALDING.EDU



GK
CHRIS HUBBARD

#1

2019 SEASON: 24 GP | 24 GS - 2,220 MIN | 78 SV | 29 GA | 5 CS
LAST MATCH: vs SLC | 90 MIN | 3 GA | 2 SV



D
ALEXIS SOUAHY

#3

2019 SEASON: 24 GP | 19 GS - 1,614 MIN | 1 G | 2 A | 2 YC | 1 RC
LAST MATCH: @ IND | 29 MIN (SUB) | 44.4% PA | 1 FOUL



D
SEAN TOTSCH

#4

2019 SEASON: 33 GP | 26 GS - 2,365 MIN | 1 G | 1 A | 88 CL | 2 YC
LAST MATCH: vs SLC | 70 MIN | 84.7% PA | 1 FOUL



D
JIMMY OCKFORD

#5

2019 SEASON: 16 GP | 16 GS - 1,422 MIN | 2 G | 66 CL | 4 YC
LAST MATCH: @ NC | 90 MIN | 82.6% PA | 1 FOUL



D
WES CHARPIE

#6

2019 SEASON: 28 GP | 28 GS - 2,392 MIN | 1 A | 63 CL | 8 YC
LAST MATCH: @ NC | 90 MIN | 79.5% PA | 9 CL



MF
MAGNUS RASMUSSEN

#7

2019 SEASON: 36 GP | 35 GS - 3,045 MIN | 17 G | 3 A | 7 YC
LAST MATCH: vs SLC | 90 MIN | 1 G | 5 SH | 1 FOUL



D
AKIL WATTS

#8

2019 SEASON: 4 GP | 3 GS - 236 | 8 CL
LAST MATCH: @ NC | 45 MIN (SUB) | 82.6% PA



F
LUKE SPENCER

#9

2019 SEASON: 35 GP | 20 GS - 2,004 MIN | 10 G | 4 A | 2 YC
LAST MATCH: @ NC | 3 MIN (SUB) | 100% PA



F
BRIAN OWNBY

#10

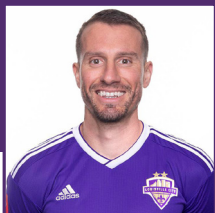
2019 SEASON: 24 GP | 20 GS - 1,849 MIN | 2 G | 5 A | 4 YC | 1 RC
LAST MATCH: @ NC | 76 MIN | 70.8% PA | 4 SH | 1 FOUL



MF
NIALL McCABE

#11

2019 SEASON: 33 GP | 32 GS - 2,924 MIN | 3 G | 6 A | 2 YC | 1 RC
LAST MATCH: @ NC | 90 MIN | 79.6% PA



MF
CORBEN BONE

#13

2019 SEASON: GP 6 | GS 2 - 186 MIN

LAST MATCH: @ NC | 90 MIN | 47 P | 85.1% PA | 1 FOUL



F
ABDOU THIAM

#14

2019 SEASON: 26 GP | 12 GS - 1,236 MIN | 3 G | 4 A | 4 YC

LAST MATCH: vs SLC | 30 MIN (SUB) | 2 SH | 87.5% PA



D
PAT McMAHON

#15

2019 SEASON: 17 GP | 10 GS - 1,141 MIN | 1 G | 2 A | 30 CL | 4 YC

LAST MATCH: @ NC | 90 MIN | 84.1% PA | 3 CL



F
CAMERON LANCASTER

#17

2019 SEASON: 18 GP | 7 GS - 730 MIN | 5 G | 1 A

LAST MATCH: @ NC | 87 MIN | 1 G | 7 SH | 64% PA | 3 FOULS



D
OSCAR JIMENEZ

#19

2019 SEASON: 37 GP | 37 GS - 3,341 MIN | 1 G | 7 A | 59 CL | 4 YC

LAST MATCH: @ NC | 45 MIN | 63.6% PA | 6 CL



F
GEORGE DAVIS IV

#22

2019 SEASON: 32 GP | 12 GS - 1,215 MIN | 3 G | 2 A | 1 YC
LAST MATCH: @ SLC | 2 MIN (SUB) | 100% PA



MF
NAPO MATSOSO

#27

2019 SEASON: 23 GP | 20 GS - 1,701 MIN | 5 G | 1 A | 4 YC | 1 RC
LAST MATCH: @ NC | 90 MIN | 91.5% PA | 1 FOUL



F
ANTOINE HOPPENOT

#29

2019 SEASON: 30 GP | 20 GS - 1,978 MIN | 5 G | 2 A | 4 YC
LAST MATCH: @ IND | 90 MIN | 1 G | 2 SH | 70.8% PA



MF
PAOLO DeIPICCOLO

#36

2019 SEASON: 17 GP | 10 GS - 915 MIN | 2 G | 3 YC
LAST MATCH: @ NC | 14 MIN (SUB) | 57.1% PA



GK
BEN LUNDT

#39

2019 SEASON: 12 GP | 12 GS - 1,080 MIN | 27 SV | 11 GA | 4 CS
LAST MATCH: @ NC | 90 MIN | CS | 2 SV | 62.5% PA



D
JONATHAN GOMEZ

#42

2019 SEASON: N/A

LAST MATCH: N/A



MF
DAMIR BEGANOVIC

#45

2019 SEASON: N/A

LAST MATCH: N/A



MF
ELIJAH WYNDER

#61

2019 SEASON: N/A

LAST MATCH: N/A

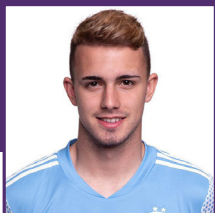


MF
DEVON "SPEEDY" WILLIAMS

#80

2019 SEASON: 30 GP | 30 GS - 2,760 MIN | 1 G | 1 A | 7 YC

LAST MATCH: @ NC | 90 MIN | 78% PA | 2 BLOCKED SHOTS



GK
MUAMER UGARAK

#91

2019 SEASON: N/A

LAST MATCH: N/A

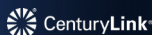
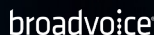


Kick off your cloud technology journey with Virtual Telecomm.

Cloud Phones • SD-WAN • Internet • Security



Thank you to the following carriers for partnering with Virtual Telecomm & Louisville City FC.



virtualtelecomm.com 502.400.8600

**WE LOVE LOUISVILLE.
WE LOVE SOCCER.
WE LOVE LOU CITY.**

LISTEN TO THE GAMES LIVE:



LOUISVILLE CITY FOOTBALL CLUB

2020 SCHEDULE

3.7 @ NORTH CAROLINA FC W 1-0

7.12 PITTSBURGH RIVERHOUNDS SC 5:00 PM

7.18 SAINT LOUIS FC 8:00 PM

7.25 SPORTING KC II 8:00 PM

7.29 SPORTING KC II 8:00 PM

8.8 INDY ELEVEN 8:00 PM

8.12 SPORTING KC II 8:00 PM

8.15 LOUDOUN UNITED FC 8:00 PM

8.26 INDY ELEVEN 8:00 PM

8.29 @ SAINT LOUIS FC 8:00 PM

9.5 @ INDY ELEVEN 7:00 PM

9.12 SAINT LOUIS FC 7:30 PM

9.16 @ INDY ELEVEN 7:00 PM

9.19 MEMPHIS 901 FC 7:30 PM

9.26 @ SAINT LOUIS FC 8:00 PM

10.3 SPORTING KC II 7:30 PM

HOME

AWAY

502-LOU-CITY



LOUCITY.COM



VOLUFORMS

PRINT • PROMOTE • DISTRIBUTE

Putting Your Best Brand Forward.



voluforms.com  

zies
yers • Flags
s • Bags • Stickers
ners • Menus • Glassware
s • Rack Cards • Bags • Stickers
ns • Uniforms • Planners • Hats • Flyers
Branded Wearables • Brochures • Door Han
arking Passes • Wristbands • Bandanas •
ngers • Rack Cards • Bags • Stickers • Key
ow Decals • Game Programs • Uniforms •
ks • Bags • Stickers • Keychains • Magnet
Window Decals • Game Programs •
Backpac

LOUISVILLE CITY FC OFFICIAL BROADCAST PARTNER
WATCH THE 2020 SEASON GAMES ON THESE STATIONS



**NEW! LIVE STREAMING GAMES
ON WDRB NOW APP**

**Download for your Big Screen or Tablets*



WDRB IN THE MORNING
THE SOURCE

YOUTH CLUB PARTNERS

Louisville City FC is proud to be a vibrant, active member of our community, and to partner with many of our region's Youth Soccer Clubs through our Youth Partner Program. Through this program we hope to aid in the development of our Youth Partner Clubs by offering a plethora of incentives and unprecedented, up-close access to a professional club. We're proud to call the following organizations our partners:



ATLETICO FLAMES



**CLARK COUNTY
SOCCER ASSC.**



**FALLS CITY
SOCCER CLUB**



**KENTUCKY FIRE
JUNIORS**



LARUE COUNTY



LOUISVILLE SOCCER



**MOCKINGBIRD
VALLEY SOCCER**



OHIO ELITE



**OLDHAM SOCCER
CLUB**



SOCCER SHOTS



**SOUTHERN INDIANA
UNITED**



SPENCER COUNTY

Interested in becoming a Louisville City FC Youth Club Partner?
Contact Dylan Terry at dterry@louisvillecityfc.com.

BROUGHT TO YOU BY
 **Visionworks**
DOCTORS OF OPTOMETRY
DR. MARK LYNN & ASSOCIATES, PLLC

Kentucky's insurance company. If you're keeping score.



Things can change in an instant with one kick — and in life. So it's nice to know that when you experience loss from a storm or accident, Kentucky Farm Bureau Insurance will stand behind you with the winning service you deserve. Find your local agent at kyfb.com.

KENTUCKY FARM BUREAU



INSURANCE

BIG ON COMMITMENT.®

COMMUNITY PARTNERS

Algood Food Co.	Kentucky Bourbon Barrel, LLC
All Pro Satellite	Ladder Now, LLC
Travis Roofing Supply	Limestone Title
Andriots	LL Flex
Cardinal Pointe Financial	Louisville Soccer
Argent Trust Co	Midwest Metals
Atlas Companies	Mindel Scott
Automated Living	Money Concepts
Belfor Property Restoration	Museum Bees
Bumper to Bumper	Northwestern Mutual
Briston Bar & Grille	Oasis Solutions Group
C&I	Office Resources, Inc.
Dant Clayton	PNC
DD Williamson	Premier Health & Fitness
Delta Services	PremPack
DMLO	Priority Radiology
Farah LLC	RegenEn Solar
Dugan & Meyers	Regions Bank
ER Tree Care, LLC	Thomas Car Wash
Fibreworks	USI Insurance Services
First Kentucky Trust	Vendome Copper Works
German American Bank	Windstone
Hyland Insurance	Walker Mechanical
Insuramax	White Clay Consulting
iSports	Zoeller
Kentucky Adult Soccer	

CHAMBER AND ASSOCIATION PARTNERS

Jeffersontown
Louisville Independent Business Alliance
Main Street Association
Nulu Business Association
Riverport Business Association
St. Matthews Chamber



Uplift the spirit of Kosair Kids year-round during

CHRISTMAS IN *July*

Make 2020 a special holiday season for families in our community. Learn how at:

kosair.org/celebrate

