

MATCHDAY

SATURDAY, OCTOBER 10 | 7:30PM

PRESENTED BY
 park
community credit union

PAOLO DELPICCOLO



VS





OFFICIAL PARTNER OF



Prosource® helps companies large and small optimize processes, reduce costs, and drive profits through industry-leading Office Equipment, Document Automation, and Technology Solutions, delivered with an unmatched customer experience.

totalprosource.com | 888.698.0763

Cincinnati | Dayton | Louisville | Lexington | Huntington | Charleston

IN THIS ISSUE

GAME PREVIEW 04

LouCity gets playoff-ready; 'that's just what we do here'

TEAM ROSTERS 05

A look at team rosters for Louisville City FC and Pittsburgh Riverhounds SC

LYNN FAMILY STADIUM 06

Key details about LouCity's new home

EASTERN CONFERENCE STANDINGS 07

Where LouCity currently stands in the Eastern Conference

JOHN HACKWORTH 08

Meet Louisville City FC's head coach

LOUCITY STAFF 10-11

Louisville City's Coaches, Front Office, Technical Staff, & Medical Staff

MEET THE TEAM 13-17

Player profiles for every athlete

PLAYOFF BRACKET 20

USL Championship 2020 playoffs bracket

COMMUNITY AND CHAMBER PARTNERS 28

A listing of Louisville City's business and civic partners



LOUCITY GETS PLAYOFF-READY; 'THAT'S JUST WHAT WE DO HERE'

By Maggie Wesley

The postseason brings a different sort of energy to many teams. That, however, isn't the case for Louisville City FC.

Coach John Hackworth discovered it shortly after his arrival, when the boys in purple were en route to winning their second straight USL title.

"I remember in 2018 walking into the locker room with Niall (McCabe) early one morning, and I said, 'Are you ready for the playoffs?'" Hackworth remembers. "And he said, 'That's just what we do here. We are always ready for the playoffs.'"

"Clearly since I've been here, that expectation is not just reaching the playoffs but winning the whole thing."

LouCity will set out in earnest toward putting a third star above its crest at 7:30 p.m. Saturday when hosting Pittsburgh Riverhounds SC in the USL Championship Playoffs.

The club, in its sixth season, has reached at least the Eastern Conference Final each year. It won a first USL Cup in 2017 and made history the following year in becoming the first team to win back-to-back titles.

So for the veterans on this team, the feeling is familiar — seeing leaves change colors and their season continue. As for 17-year-old Jonathan Gomez, he's taking notes.

"They've been in that situation a lot of times before, so just take whatever they're telling me and try and apply it," said Gomez, a rookie left back aligning

himself to LouCity's culture. "Even in training their leadership shows a lot. I just try and take whatever I can and apply it to the game.

"...Since they've been through it so many times, they know exactly how to deal with it and what to expect. I'm new so I'm learning everyday what that's like."

Midfielder Paolo DelPiccolo, the team captain, has been with LouCity through all but one of those playoff runs.

"I think this time of year is just naturally going to be more exciting," DelPiccolo said. "Our whole culture and brand is treating every game like the playoffs and trying to keep the same level and consistency from day one as far as we can go.

"For us, it's trying to do the same stuff over and over. You say that, but obviously the playoffs have a special feeling and special meaning."

"All of us are a little spoiled in that regard which makes this particular game against Pittsburgh in the first round that much more important and meaningful," added Hackworth, whose side completed an abbreviated USL season 11-3-2, earning the points necessary to win its regionalized group and open the postseason at Lynn Family Stadium.

"Especially, since the fact that we won the Eastern Conference and secured home field advantage as long as we advance. It is an expectation and it is something that not one of us would think was any different."

TEAM ROSTERS



1	CHRIS HUBBARD	GK
3	ALEXIS SOUAHY	D
4	SEAN TOTSCH	D
5	JIMMY OCKFORD	D
6	WES CHARPIE	D
8	AKIL WATTS	D
9	LUKE SPENCER	F
10	BRIAN OWNBY	F
11	NIALL MCCABE	MF
13	CORBEN BONE	MF
14	ABDOU THIAM	F
15	PAT MCMAHON	D
17	CAMERON LANCASTER	F
19	OSCAR JIMENEZ	D
22	GEORGE DAVIS IV	F
27	NAPO MATSOSO	MF
29	ANTOINE HOPPENOT	MF
36	PAOLO DELPICCOLO	MF
38	ARDA BULUT	F
39	BEN LUNDT	GK
42	JONATHAN GOMEZ	D
45	DAMIR BEGANOVIC	MF
61	ELIJAH WYNDER	MF
77	JASON JOHNSON	F
80	DEVON "SPEEDY" WILLIAMS	MF
91	MUAMER UGARAK	M

1	DANNY VITIELLO	GK
2	MARK LINDSTROM	D
3	ROPAPA MENSAH	F
4	DANI ROVIRA	MF
5	JORDAN DOVER	D
6	XHELIL ASANI	D
7	RYAN JAMES	D
8	DAKOTA BARNATHAN	MF
9	ALBERT DIKWA	F
10	STEEVAN DOS SANTOS	F
11	KENARDO FORBES	MF
12	DANNY GRIFFIN	MF
14	ROBBIE MERTZ	MF
15	ANTHONY VELARDE	MF
16	MARK FORREST	F
17	THOMAS VANCAEYEZEELE	D
18	TOMAS GOMEZ	GK
20	TONY WALLS	D
21	PATRICK BUNK-ANDERSEN	D
22	HUNTER ASHWORTH	D
23	RAY LEE	D
24	ANTHONY MWEMBI	GK
33	LUKAS FERNANDES	F
34	SKYLAR THOMAS	D

HEAD COACH | **JOHN HACKWORTH**

HEAD COACH | **BOB LILLEY**



/LOUISVILLECITYFC



@LOUISVILLECITYFC



@LOUCITYFC

*Doing Things
Your Way.
Six Feet Away.*



The Official Credit Union of Louisville City FC!

502.968.3681
parkcommunity.com



WELCOME TO LYNN FAMILY STADIUM



The \$65 million stadium sits on a 10-acre parcel in the Butchertown neighborhood east of downtown. Normal capacity is 15,304, and the venue could range up to 25,000 for concerts. Unique to Lynn is a 72-foot Modelo bar in the open end, believed to be the longest of its kind in Kentucky. The jumbotron ranks second in size behind only Churchill Downs' Big Board.

The natural surface is made up of Tahoma 31 Bermuda overseeded with rye, and it can remain green year round thanks to a sub-air system that removes excessive moisture, but can also blow hot or cold air to keep grass at an ideal temperature. The lines measure 120 feet by 80, a major upgrade from the 105 by 75 pitch at LouCity's former home, Louisville Slugger Field.



LouCity has ensured its late founder's legacy lives on within the club's new home. Architect and philanthropist Wayne Estopinal, who brought pro soccer to town, is the namesake behind the closed end of Lynn Family Stadium, the standing supporter zone. Estopinal, whose firm also designed the University of Louisville's similarly named Lynn Stadium, died in a November 2018 plane crash at age 63.



EASTERN CONFERENCE GROUP STANDINGS

GROUP E	GP	W	L	D	GF	GA	GD	PTS
Y - LOUISVILLE CITY FC	16	11	3	2	26	11	16	35
X - SAINT LOUIS FC	16	7	5	4	20	17	1	25
E - INDY ELEVEN	16	7	7	2	20	20	2	23
E - SPORTING KANSAS CITY II	16	5	10	1	20	28	-9	16

GROUP F	GP	W	L	D	GF	GA	GD	PTS
Y - HARTFORD ATHLETIC	16	11	3	2	29	24	7	35
X- PITTSBURGH RIVERHOUNDS SC	16	11	4	1	37	9	29	34
E - NEW YORK RED BULLS II	16	5	11	0	30	35	-7	15
E - PHILADELPHIA UNION II	16	2	11	3	19	43	-25	9
E - LOUDOUN UNITED	13	1	9	3	10	28	-18	6

GROUP G	GP	W	L	D	GF	GA	GD	PTS
Y - CHARLOTTE INDEPENDENCE	16	8	4	4	28	16	2	28
X - BIRMINGHAM LEGION FC	16	7	5	4	23	22	10	25
E - NORTH CAROLINA FC	15	6	8	1	17	20	-4	19
E - MEMHPIS 901 FC	15	4	7	4	21	30	-7	16

GROUP H	GP	W	L	D	GF	GA	GD	PTS
Y - TAMPA BAY ROWDIES	16	10	3	3	24	9	14	33
X - CHARLESTON BATTERY	15	9	3	3	24	14	11	30
E - THE MIAMI FC	16	4	8	4	17	33	-14	16
E - ATLANTA UNITED 2	16	3	10	3	22	30	-10	12

x - Clinched playoff berth

y - Group Winner

e - Eliminated from playoff contention

JOHN HACKWORTH

Louisville City Football Club coach John Hackworth was hired in the middle of the 2018 season and promptly led the Club to its second USL Cup championship, completing the first back-to-back USL Cup titles in modern USL history.

Hackworth was hired on Aug. 2, 2018, taking over for previous coach James O'Connor who was hired with Orlando City of the MLS. After O'Connor left, Louisville City continued its season as a player-led team until Hackworth took over mid-August. Under Hackworth's direction, LouCity closed out the regular season well and then rolled through the 2018 USL playoffs with four impressive wins – outscoring the four playoff teams in their path 12-2.

“Hack came in with an impressive amount of experience and success throughout his career developing the abilities of some of our country's most exciting prospects,” Louisville City FC President Brad Estes said. “In addition, his sharp eye for talent and ability to develop elite players, we were impressed with his ability to successfully lead our Club with a remarkable humility and focus down the stretch of the 2018 season. He was able to quickly establish himself as the lead of the group that was already assembled and then add new players who complimented the team's tremendous talent.”

By the start of the 2018 Playoffs, Hackworth had molded the squad into a dominant force. Louisville City beat Indy Eleven 4-1, rolled over the Bethlehem Steel 2-0 and then crushed the New York Red Bulls 5-1 to make the USL Cup Final. Hackworth and Louisville City captured the club's second star with a 1-0 win over West Champion Phoenix Rising.

After the club conducted an international search for its next leader, Hackworth is Louisville City's second-ever head coach. The 48-year-old native of Dunedin, Fla., signed a contract spanning through the 2022 season.



“Those that know him have applauded his coaching acumen, but his character is what we are most excited about as we take Louisville City FC forward,” Estes said of Hackworth.

Prior to Louisville City, Hackworth had been in charge of the U.S. U-17 Men's National Team since 2015 and has served as an assistant to the U.S. Men's National Team since the beginning of this year. An experienced coach at the national level, Hackworth began with U.S. Soccer in 2002 when he first served as an assistant to then-U.S. U-17 Men's National Team head coach John Ellinger. Hackworth would go on to succeed Ellinger and lead the U-17's to finishes in the quarterfinals of the 2005 FIFA U-17 World Cup and Round of 16 in the 2007 FIFA U-17 World Cup. Following his time in charge of the U-17's, Hackworth also served as the inaugural Technical Director of the U.S. Soccer Development Academy.

Outside of his time with U.S. Soccer, Hackworth's experience extends to both the collegiate and professional levels of the game. He began as an assistant coach for the Wake Forest University women's and men's teams in 1993 and 1994. Hackworth was then named the head coach at the University of South Florida in 1998, where he led the Bulls to two NCAA Tournament Appearances.

In Major League Soccer, Hackworth spent five years with the Philadelphia Union, serving as the club's Youth Development Coordinator from 2009-12, and head coach from 2012-14 before returning to take charge of the U.S. U-17 Men's National Team.



CENTERED ON YOU



YOU DON'T NEED AN AGENT TO GO TO THE PROS.

THE BAPTIST HEALTH SPORTS MEDICINE TEAM IS RIGHT HERE FOR YOU. Our physicians, therapists and athletic trainers are pros at helping you get back in action and perform at your best. We provide complete sports medicine services, including sports medicine-trained physicians for both surgical and non-surgical cases, physical therapy, and athletic training services that operate out of one convenient location.

OFFICIAL SPORTS MEDICINE
PROVIDER FOR LOUISVILLE CITY FC



BAPTIST HEALTH®

LOUISVILLE

Corbin | Floyd | La Grange | Lexington | Louisville | Madisonville | Paducah | Richmond



[BaptistHealth.com](https://www.BaptistHealth.com)

DANNY CRUZ

ASSISTANT COACH | PETERSBURG, VA



10-year professional veteran Danny Cruz was John Hackworth's first coaching hire at Louisville City. Cruz has known Hackworth since Cruz was 16, playing for Hackworth as part of elite youth development teams. Cruz, a native of Petersburg, Va., was a successful pro, playing 137 career games at the MLS level. The former UNLV star was a third round draft pick in the 2009 MLS SuperDraft before playing with Houston Dynamo, D.C. United and Philadelphia Union. A fiery competitor, Cruz brings intensity, experience and tactical knowledge to bolster Hackworth's technical staff.

SCOTT BUDNICK

GOALKEEPER COACH | LOUISVILLE, KY



After John Hackworth brought in Budnick as interim goalkeeper coach in August 2018, the move went so well that he was offered the permanent position on Jan. 7, 2019. A wealth of goalkeeping knowledge, Budnick's tactical mind and steady demeanor imbues the goalkeepers union with confidence and courage. Budnick gained his knowledge through decades of experience at William and Mary, with the Richmond Kickers and Hampton Roads Hurricanes in the USISL and playing stints in English and German as well as time with three clubs in the MLS (Tampa Bay Mutiny, Miami Fusion and New England Revolution). Prior to LouCity, Budnick had a successful law career while coaching locally.

TECHNICAL STAFF

STUART WRIGHT

Director of Sports Performance and
Head Athletic Trainer

BEN HULSMAN

Team Equipment Manager

MEDICAL STAFF

MARK PUCKETT, MD

Team Physician

W. MICHAEL HUGHES JR, DO

Team Physician

NICHOLAS KENNEY, MD

Team Orthopedic Surgeon

CHELSEA POOLE, MS

Assistant Athletic Trainer

FRONT OFFICE

JOHN NEACE

Chairman

JAMES O'CONNOR

Executive Vice President
of Development

SHERYL MOORE

Staff Accountant

PATRICK STEWART

Partnership
Development Director

DYLAN TERRY

Partnership
Development Manager

KRISTEN WALLACE

Academy Executive
Director

BROCK HICKAM

Junior Academy Director
for Boys and Girls

DAVE WALKOVIC

Manager of Ticket
Operations

GABE SCHENKER

Business Development
Specialist

MIREN ZUBILLAGA

Business Development
Specialist

BRITTNEY GORTER

Director of Marketing

RACHEL REGENAUER

Graphic Designer

BRAD ESTES

President

DAVENA VOWELS

Vice President of
Operations

RUSTY FAZIO

Director of Information
Technology

ERIN WILKINS

Human Resources
Manager

PAT DENBOW

Director or Partner
Strategy

EIMAN ZUBERI

Partnership Fulfillment
Coordinator

SIMON BIRD

Louisville City FC
Academy Director

THABANE SUTU

Academy Goalkeeping
Director

BRENDA MORAN

Business Development
Specialist

TERRENCE SPENCE

Business Development
Specialist

JONATHAN LINTNER

Senior Director of PR
and Communications

MITCH RIED

Vice President of Sales
and Marketing

CARLY BROWN

Director of Finance

JON RYAN NEACE

Information Technology
Technician

BRAD GORDON

Partnership
Development Director

MARIO SANCHEZ

Youth Academy Director

TIM NOWAK

Racing Louisville FC
Academy Director

CRAIG JONES

Academy Director of
Soccer Operations

JARROD ROCKHOLD

Business Development
Specialist

BRAD GRAHAM

Membership
Development Specialist

EVAN FLOYD

Partnerships and
Community Relations
Executive

KYLE SPRIGGS

Creative Content
Producer

TOP 5
COLLEGE IN
KENTUCKY
(College Choice 2017, 2018)

LOUISVILLE'S DOWNTOWN UNIVERSITY

Out to change the world, starting in our own backyard.



ON CAMPUS | ONLINE | SPALDING.EDU



GK
CHRIS HUBBARD

#1

2019 SEASON: 24 GP | 24 GS - 2,220 MIN | 78 SV | 29 GA | 5 CS
LAST MATCH: vs STL | 90 MIN | 1 GA | 1 SV



D
ALEXIS SOUAHY

#3

2019 SEASON: 24 GP | 19 GS - 1,614 MIN | 1 G | 2 A | 2 YC | 1 RC
LAST MATCH: vs SKC | 90 MIN | 96.1% PA



D
SEAN TOTSCH

#4

2019 SEASON: 33 GP | 26 GS - 2,365 MIN | 1 G | 1 A | 88 CL | 2 YC
LAST MATCH: vs SKC | 90 MIN | 90.9% PA | 2 SH



D
JIMMY OCKFORD

#5

2019 SEASON: 16 GP | 16 GS - 1,422 MIN | 2 G | 66 CL | 4 YC
LAST MATCH: vs. MEM | 1 MIN (SUB)



D
WES CHARPIE

#6

2019 SEASON: 28 GP | 28 GS - 2,392 MIN | 1 A | 63 CL | 8 YC
LAST MATCH: @ STL | 45 MIN (SUB) | 84.6% PA | 1 CL



D
AKIL WATTS

#8

2019 SEASON: 4 GP | 3 GS - 236 | 8 CL

LAST MATCH: vs SKC | 75 MIN | 78.3% PA | 2 KP



F
LUKE SPENCER

#9

2019 SEASON: 35 GP | 20 GS - 2,004 MIN | 10 G | 4 A | 2 YC

LAST MATCH: vs SKC | 3 MIN (SUB) | 100% PA | 1 YC



MF/F
BRIAN OWNBY

#10

2019 SEASON: 24 GP | 20 GS - 1,849 MIN | 2 G | 5 A | 4 YC | 1 RC

LAST MATCH: vs SKC | 90 MIN | 70.2% PA | 5 SH | 1 KP

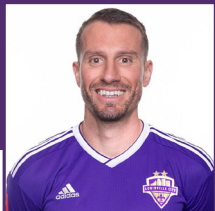


MF
NIALL McCABE

#11

2019 SEASON: 33 GP | 32 GS - 2,924 MIN | 3 G | 6 A | 2 YC | 1 RC

LAST MATCH: vs SKC | 90 MIN | 81.8% PA | 1 SH | 3 KP



MF
CORBEN BONE

#13

2019 SEASON: GP 6 | GS 2 - 186 MIN

LAST MATCH: @ STL | 79 MIN | 90.5% PA | 3 KP



F
ABDOU THIAM

#14

2019 SEASON: 26 GP | 12 GS - 1,236 MIN | 3 G | 4 A | 4 YC
LAST MATCH: @ STL | 34 MIN (SUB) | 100% PA | 1 SH



D
PAT McMAHON

#15

2019 SEASON: 17 GP | 10 GS - 1,141 MIN | 1 G | 2 A | 30 CL | 4 YC
LAST MATCH: vs SKC | 75 MIN | 89.7% PA



F
CAMERON LANCASTER

#17

2019 SEASON: 18 GP | 7 GS - 730 MIN | 5 G | 1 A
LAST MATCH: vs SKC | 87 MIN | 68.4% PA | 5 SH | 1 G | 1 KP



D
OSCAR JIMENEZ

#19

2019 SEASON: 37 GP | 37 GS - 3,341 MIN | 1 G | 7 A | 59 CL | 4 YC
LAST MATCH: vs SKC | 90 MIN | 90% PA | 1 SH | 3 KP



MF
GEORGE DAVIS IV

#22

2019 SEASON: 32 GP | 12 GS - 1,215 MIN | 3 G | 2 A | 1 YC
LAST MATCH: vs SKC | 24 MIN (SUB) | 75% PA | 1 CL | 2 KP



MF
NAPO MATSOSO

#27

2019 SEASON: 23 GP | 20 GS - 1,701 MIN | 5 G | 1 A | 4 YC | 1 RC
LAST MATCH: @ IND | 89 MIN | 69% PA



MF/F
ANTOINE HOPPENOT

#29

2019 SEASON: 30 GP | 20 GS - 1,978 MIN | 5 G | 2 A | 4 YC
LAST MATCH: vs SKC | 87 MIN | 78.4% PA | 1 SH | 3 KP | 1 A



MF
KENNEY WALKER

#32

2019 SEASON: 31 GP | 24 GS - 2,123 MIN | 1 G | 5 A | 1 YC
LAST MATCH: vs SKC | 15 MIN (SUB) | 100% PA



MF
PAOLO DeIppiccolo

#36

2019 SEASON: 17 GP | 10 GS - 915 MIN | 2 G | 3 YC
LAST MATCH: vs SKC | 90 MIN | 75% PA | 4 SH | 1 G | 2 KP



F
ARDA BULUT

#38

2019 SEASON: N/A
LAST MATCH: N/A



GK
BEN LUNDT

#39

2019 SEASON: 12 GP | 12 GS - 1,080 MIN | 27 SV | 11 GA | 4 CS
LAST MATCH: vs SKC | 90 MIN | 2 SV | 1 GA



D
JONATHAN GOMEZ

#42

2019 SEASON: N/A

LAST MATCH: vs. MEM | 67 MIN | 73.3% PA | 1 SH



MF
DAMIR BEGANOVIC

#45

2019 SEASON: N/A

LAST MATCH: N/A



MF
ELIJAH WYNDER

#61

2019 SEASON: N/A

LAST MATCH: vs LDN | 23 MIN (SUB) | 100% PA | 1 SH



F
JASON JOHNSON

#77

2019 SEASON: 15 GP | 5 GS - 458 MIN | 3 G | 1 A | 7 KP

LAST MATCH: vs SKC | 3 MIN (SUB) | 33.3% PA

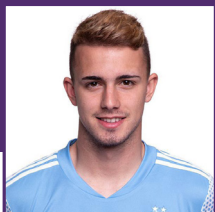


MF
DEVON "SPEEDY" WILLIAMS

#80

2019 SEASON: 30 GP | 30 GS - 2,760 MIN | 1 G | 1 A | 7 YC

LAST MATCH: vs SKC | 90 MIN | 87.7% PA | 2 SH | 3 KP



GK
MUAMER UGARAK

#91

2019 SEASON: N/A

LAST MATCH: N/A

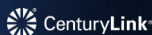
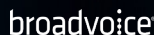


Kick off your cloud technology journey with Virtual Telecomm.

Cloud Phones • SD-WAN • Internet • Security



Thank you to the following carriers for partnering with Virtual Telecomm & Louisville City FC.



virtualtelecomm.com 502.400.8600

**WE LOVE LOUISVILLE.
WE LOVE SOCCER.
WE LOVE LOU CITY.**

LISTEN TO THE GAMES LIVE:





 **MHS | OUR TIME**

END OF SEASON
SUPER
Select items 50% off
SALE
NEW ITEMS ADDED!

LOCATED AT THE
EAST SIDE BEER GARDEN NEAR GATE 2



RACING LOUISVILLE FC

TAKES THE PITCH FOR THEIR
INAUGURAL SEASON IN 2021! DON'T
MISS YOUR CHANCE TO SEE TEAM
USA STARS SUCH AS ROSE LAVELLE,
MEGAN RAPINOE, AND ALEX
MORGAN AT LYNN FAMILY STADIUM.

SECURE YOUR SEASON TICKETS
STARTING AT \$198 TODAY AT
RACINGLOUFC.COM





VOLUFORMS

PRINT • PROMOTE • DISTRIBUTE

Putting Your Best Brand Forward.



voluforms.com  

zies
yers • **Flags**
s • Bags • Stickers
ners • **Menus** • **Glassware**
s • Rack Cards • Bags • Stickers
ns • **Uniforms** • **Planners** • **Hats** • **Flyers**
Branded Wearables • Brochures • Door Han
arking **Passes** • **Wristbands** • **Bandanas** •
ngers • Rack Cards • Bags • Stickers • Key
ow **Decals** • **Game Programs** • **Uniforms** •
s • Bags • Stickers • Keychains • Magnet
Window **Decals** • **Game Programs** •
• Keychains • Magnet
• **Passes** • W
Backpac

TEAM UP with a Louisville Original!



WDRB IN THE MORNING

All Local 5-9AM

THE SOURCE

SIGNATURE HEALTHCARE

JOIN OUR TEAM

NURSES | C.N.A'S
NURSE PRACTITIONERS
DIETARY STAFF

COMPETITIVE WAGES / FLEXIBLE SCHEDULES
OUTSTANDING BENEFITS / GROWTH OPPORTUNITIES

8 SKILLED NURSING CENTERS
SERVING THE LOUISVILLE MARKET

Apply On-Line at LTCRevolution.com
TEXT "NEWJOB" TO 97211



Kentucky's insurance company. If you're keeping score.



Things can change in an instant with one kick — and in life. So it's nice to know that when you experience loss from a storm or accident, Kentucky Farm Bureau Insurance will stand behind you with the winning service you deserve. Find your local agent at kyfb.com.

KENTUCKY FARM BUREAU



INSURANCE

BIG ON COMMITMENT.®



**WE
NEED
TO BE** **UNITED** *NOW MORE THAN EVER*



Just as LouCity players work together on the field, we work together in innovative ways with businesses, individuals, nonprofits and government orgs to empower individuals and families in our community to achieve their fullest potential.

We mean it when we say that with your help, we will create a better – more equitable future for all – right here at home!

Go LouCity!

metrounitedway.org/2020



Metro United Way

COMMUNITY PARTNERS

Algood Food Co.	Limestone Title
All Pro Satellite	Louisville Soccer
Atlas Companies	Midwest Metals
Atria Senior Living	Mindel Scott
Automated Living	Museum Bees
Belfor Property Restoration	Oasis Solutions Group
Bumper to Bumper	Office Resources, Inc.
C&I	Premier Health & Fitness
Dant Clayton	PremPack
DD Williamson	Priority Radiology
DMLO	RegenEn Solar
First Kentucky Trust	Regions Bank
Hyland Insurance	Thomas Car Wash
Insuramax	Vendome Copper Works
Ladder Now, LLC	Walker Mechanical

CHAMBER AND ASSOCIATION PARTNERS

Jeffersontown
Louisville Independent Business Alliance
Main Street Association
Nulu Business Association
Riverport Business Association
St. Matthews Chamber

**Score More Free
Time When You
Order Game
Day Faves for
FREE Pickup**



HELP FOR THE *Holidays*



2020 has been a challenging year for many, but especially for families who have a child with special medical needs.



We need your help to make this holiday season special for Kosair Kids® and their families.

Purchase a gift from our Amazon Wish List:

bit.ly/KC_wishlist



Donate to the Kosair Kid Experience Fund:

kosair.org/celebrate

