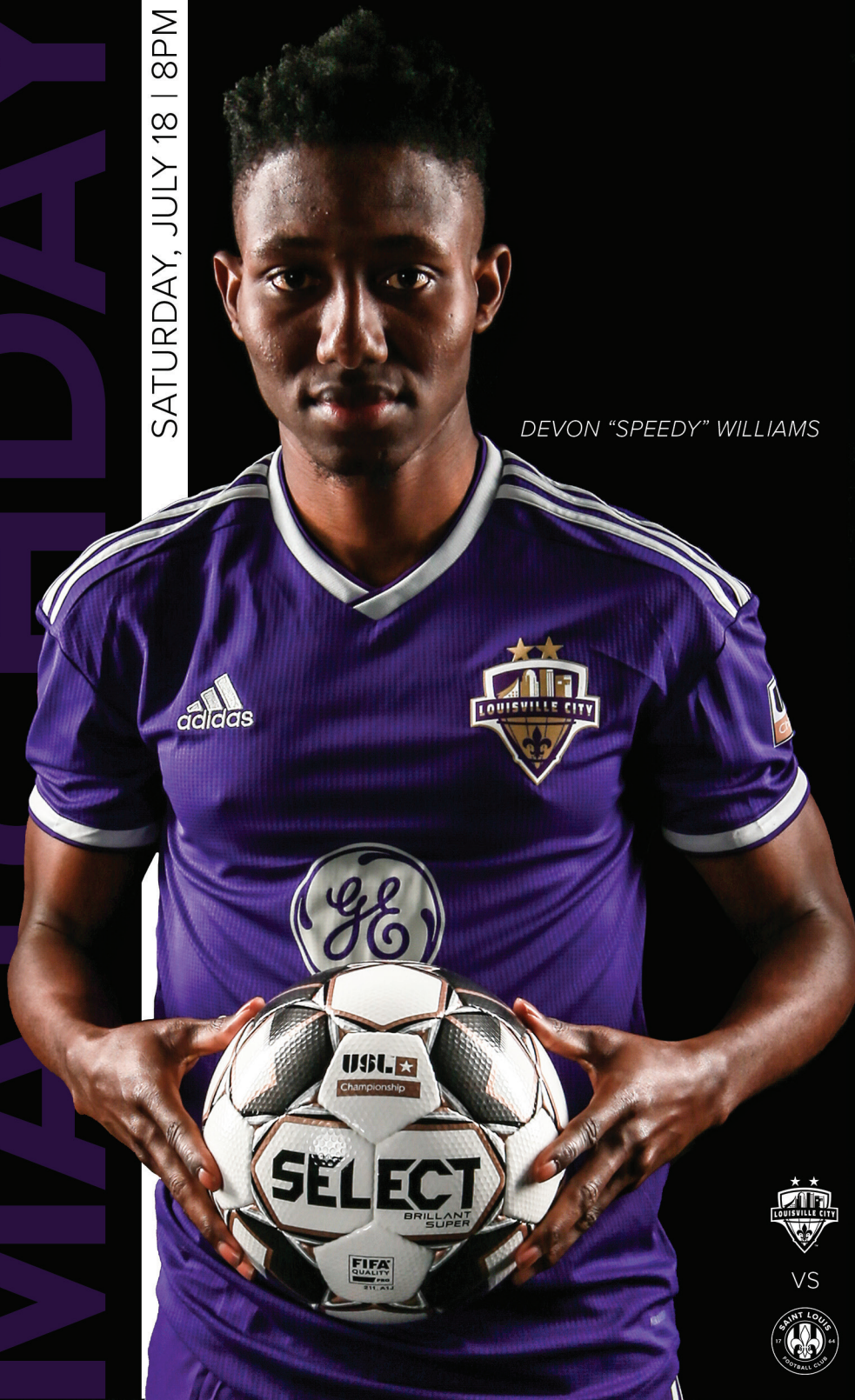


WATCHE DAY

SATURDAY, JULY 18 | 8PM

DEVON "SPEEDY" WILLIAMS



VS





OFFICIAL PARTNER OF



Prosource® helps companies large and small optimize processes, reduce costs, and drive profits through industry-leading Office Equipment, Document Automation, and Technology Solutions, delivered with an unmatched customer experience.

totalprosource.com | 888.698.0763

Cincinnati | Dayton | Louisville | Lexington | Huntington | Charleston

IN THIS ISSUE

GAME PREVIEW 04

'We can't play with fear'; LouCity readies for Lynn Family Stadium encore

TEAM ROSTERS 05

A look at team rosters for Louisville City FC and St. Louis FC

LYNN FAMILY STADIUM 06

Key details about LouCity's new home

EASTERN CONFERENCE STANDINGS 07

Where LouCity currently stands in the Eastern Conference

JOHN HACKWORTH 08

Meet Louisville City FC's head coach

LOUCITY STAFF 10-11

Louisville City's Coaches, Front Office, Technical Staff, & Medical Staff

MEET THE TEAM 13-17

Player profiles for every athlete

SCHEDULE 20

A full rundown of our 2020 reschedule updated with wins and losses

COMMUNITY AND CHAMBER PARTNERS 25

A listing of Louisville City's business and civic partners



'WE CAN'T PLAY WITH FEAR'; LOUCITY READIES FOR LYNN FAMILY STADIUM ENCORE

By Ysabella Leon

As Louisville City FC prepares to take to its home pitch again at 8 p.m. Saturday, coach and sporting director John Hackworth continues to reflect on lessons learned from last weekend's defeat.

The boys in purple allowed three unanswered goals in a 3-1 loss to Pittsburgh Riverhounds SC in Lynn Family Stadium's inaugural game, making for a rocky restart to the USL Championship season.

"What we took away from it is that we can't play with fear," Hackworth said. "We were tight, we were nervous, and that showed. Pittsburgh presented us with problems, and we didn't go through the normal things that we go through to solve those problems."

But, Hackworth added, "This is a group that's always had a good response when we do have a setback, and that's the expectation for us."

LouCity hosts a familiar rival in Saint Louis FC, which has a new look under first-year coach Steve Trittschuh. Saint Louis also lost its first game back from the COVID-19 pandemic, dropping a 2-0 away decision to Indy Eleven.

"We're very anxious about setting this right and showing our fans that we are much better team than what we showed this past Sunday," Hackworth said.

Hackworth spoke of LouCity fine-tuning its mental game and fixing simple mistakes from the loss. Twice in the second half's first five minutes, for example, the boys in purple turned the ball over in their own half leading to opposing goals.

"It's like a fumble on the 2-yard line," Hackworth said. "You do not do that. It's bad tactics."

LouCity won't change how it plays but rather reinforce its philosophies.

"It's just the style that we believe in," the coach said. "You watch other teams and they won't even try to play out of the back. We try to play out of the back. We do it so that we bring the opposition to us to create space to play in behind them."

Third-year defender Alexis Souahy, who was part of that back line last weekend, says he and his teammates are ready to apply what they've learned against Saint Louis FC.

"I think the biggest thing for us was reviewing the game with the details and see what we did wrong and what was not right, and how to correct that — always having that problem-solving mindset," Souahy said. "Obviously we don't like losing games. We're a championship team..."

"The game is behind us, and now we are just looking forward to the next game and making sure we do the right things."

Saturday's game is the first of four this season — two at home, two away — against Saint Louis FC. That's because LouCity's Kings' Cup rival is also part of the USL Championship's "Group E" along with Indy and Sporting KC II.

Hackworth has described occasions such as Saturday's as "mini-playoff" contests.

"These games, because of the aspect of only the top two advances (to the playoffs), are like six-point games," Hackworth said. "Especially coming off of Sunday, where we don't have the kind of result that we want...both teams, having lost on the weekend, are coming into a position playing their first divisional opponent. This game has added importance because of that."

TEAM ROSTERS



1	CHRIS HUBBARD	GK
3	ALEXIS SOUAHY	D
4	SEAN TOTSCH	D
5	JIMMY OCKFORD	D
6	WES CHARPIE	D
7	MAGNUS RASMUSSEN	MF
8	AKIL WATTS	D
9	LUKE SPENCER	F
10	BRIAN OWNBY	F
11	NIALL MCCABE	MF
13	CORBEN BONE	MF
14	ABDOU THIAM	F
15	PAT MCMAHON	D
17	CAMERON LANCASTER	F
19	OSCAR JIMENEZ	D
22	GEORGE DAVIS IV	F
27	NAPO MATSOSO	MF
29	ANTOINE HOPPENOT	MF
36	PAOLO DELPICCOLO	MF
39	BEN LUNDT	GK
42	JONATHAN GOMEZ	D
45	DAMIR BEGANOVIC	MF
61	ELIJAH WYNDER	MF
80	DEVON "SPEEDY" WILLIAMS	MF
91	MUAMER UGARAK	M



1	KYLE MORTON	GK
2	PARIS GEE	D
3	PHANUEL KAVITA	D
4	SAM FINK	D
5	WAL FALL	MF
6	DANIEL FISCHER	D
7	TODD WHARTON	MF
8	GUY ABEND	MF
9	RUSSELL CICERONE	MF
10	MOUR SAMB	F
11	JOAQUIN RIVAS	MF
13	KADEEM DACRES	MF
14	TYLER BLACKWOOD	F
17	OSCAR UMAR	MF
18	JOHN BERNER	GK
21	TOBI ADEWOLE	D
22	KYLE GREIG	F
23	RICHARD BRYAN	D
28	JEREMY GAGNON-LAPARÉ	D
29	NICHI VLASTOS	MF

HEAD COACH | **JOHN HACKWORTH**

HEAD COACH | **STEVE TRITTSCHUH**



/LOUISVILLECITYFC



@LOUISVILLECITYFC



@LOUCITYFC

WELCOME TO LYNN FAMILY STADIUM



The \$65 million stadium sits on a 10-acre parcel in the Butchertown neighborhood east of downtown. Normal capacity is 15,304, and the venue could range up to 25,000 for concerts. Unique to Lynn is a 72-foot Modelo bar in the open end, believed to be the longest of its kind in Kentucky. The jumbotron ranks second in size behind only Churchill Downs' Big Board.

The natural surface is made up of Tahoma 31 Bermuda overseeded with rye, and it can remain green year round thanks to a sub-air system that removes excessive moisture, but can also blow hot or cold air to keep grass at an ideal temperature. The lines measure 120 feet by 80, a major upgrade from the 105 by 75 pitch at LouCity's former home, Louisville Slugger Field.



LouCity has ensured its late founder's legacy lives on within the club's new home. Architect and philanthropist Wayne Estopinal, who brought pro soccer to town, is the namesake behind the closed end of Lynn Family Stadium, the standing supporter zone. Estopinal, whose firm also designed the University of Louisville's similarly named Lynn Stadium, died in a November 2018 plane crash at age 63.



EASTERN CONFERENCE GROUP STANDINGS

GROUP E	GP	W	L	D	GF	GA	GD	PTS
INDY ELEVEN	2	2	0	0	6	2	4	6
SAINT LOUIS FC	2	1	1	0	4	3	1	3
LOUISVILLE CITY FC	2	1	1	0	2	3	-1	3
SPORTING KANSAS CITY II	1	0	1	0	1	2	-1	0

GROUP F	GP	W	L	D	GF	GA	GD	PTS
PITTSBURGH RIVERHOUNDS SC	1	1	0	0	3	1	2	3
LOUDOUN UNITED FC	1	0	0	1	0	0	0	1
PHILADELPHIA UNION II	1	0	0	1	0	0	0	1
HARTFORD ATHLETIC	0	0	0	0	0	0	0	0
NEW YORK RED BULLS II	1	0	1	0	0	1	-1	0

GROUP G	GP	W	L	D	GF	GA	GD	PTS
BIRMINGHAM LEGION FC	1	1	0	0	3	0	3	3
CHARLOTTE INDEPENDENCE	1	1	0	0	2	1	1	3
NORTH CAROLINA FC	1	0	1	0	0	1	-1	0
MEMHPIS 901	2	0	2	0	2	7	-5	0

GROUP H	GP	W	L	D	GF	GA	GD	PTS
TAMPA BAY ROWDIES	2	2	0	0	3	1	2	6
CHARLESTON BATTERY	1	1	0	0	1	1	1	3
ATLANTA UNITED 2	2	0	2	0	0	2	-2	0
THE MIAMI FC	1	0	1	0	1	4	-3	0

JOHN HACKWORTH

Louisville City Football Club coach John Hackworth was hired in the middle of the 2018 season and promptly led the Club to its second USL Cup championship, completing the first back-to-back USL Cup titles in modern USL history.

Hackworth was hired on Aug. 2, 2018, taking over for previous coach James O'Connor who was hired with Orlando City of the MLS. After O'Connor left, Louisville City continued its season as a player-led team until Hackworth took over mid-August. Under Hackworth's direction, LouCity closed out the regular season well and then rolled through the 2018 USL playoffs with four impressive wins – outscoring the four playoff teams in their path 12-2.

“Hack came in with an impressive amount of experience and success throughout his career developing the abilities of some of our country's most exciting prospects,” Louisville City FC President Brad Estes said. “In addition, his sharp eye for talent and ability to develop elite players, we were impressed with his ability to successfully lead our Club with a remarkable humility and focus down the stretch of the 2018 season. He was able to quickly establish himself as the lead of the group that was already assembled and then add new players who complimented the team's tremendous talent.”

By the start of the 2018 Playoffs, Hackworth had molded the squad into a dominant force. Louisville City beat Indy Eleven 4-1, rolled over the Bethlehem Steel 2-0 and then crushed the New York Red Bulls 5-1 to make the USL Cup Final. Hackworth and Louisville City captured the club's second star with a 1-0 win over West Champion Phoenix Rising.

After the club conducted an international search for its next leader, Hackworth is Louisville City's second-ever head coach. The 48-year-old native of Dunedin, Fla., signed a contract spanning through the 2022 season.



“Those that know him have applauded his coaching acumen, but his character is what we are most excited about as we take Louisville City FC forward,” Estes said of Hackworth.

Prior to Louisville City, Hackworth had been in charge of the U.S. U-17 Men's National Team since 2015 and has served as an assistant to the U.S. Men's National Team since the beginning of this year. An experienced coach at the national level, Hackworth began with U.S. Soccer in 2002 when he first served as an assistant to then-U.S. U-17 Men's National Team head coach John Ellinger. Hackworth would go on to succeed Ellinger and lead the U-17's to finishes in the quarterfinals of the 2005 FIFA U-17 World Cup and Round of 16 in the 2007 FIFA U-17 World Cup. Following his time in charge of the U-17's, Hackworth also served as the inaugural Technical Director of the U.S. Soccer Development Academy.

Outside of his time with U.S. Soccer, Hackworth's experience extends to both the collegiate and professional levels of the game. He began as an assistant coach for the Wake Forest University women's and men's teams in 1993 and 1994. Hackworth was then named the head coach at the University of South Florida in 1998, where he led the Bulls to two NCAA Tournament Appearances.

In Major League Soccer, Hackworth spent five years with the Philadelphia Union, serving as the club's Youth Development Coordinator from 2009-12, and head coach from 2012-14 before returning to take charge of the U.S. U-17 Men's National Team.



CENTERED ON YOU



YOU DON'T NEED AN AGENT TO GO TO THE PROS.

THE BAPTIST HEALTH SPORTS MEDICINE TEAM IS RIGHT HERE FOR YOU. Our physicians, therapists and athletic trainers are pros at helping you get back in action and perform at your best. We provide complete sports medicine services, including sports medicine-trained physicians for both surgical and non-surgical cases, physical therapy, and athletic training services that operate out of one convenient location.

OFFICIAL SPORTS MEDICINE
PROVIDER FOR LOUISVILLE CITY FC



BAPTIST HEALTH®

LOUISVILLE

Corbin | Floyd | La Grange | Lexington | Louisville | Madisonville | Paducah | Richmond



[BaptistHealth.com](https://www.BaptistHealth.com)

DANNY CRUZ

ASSISTANT COACH | PETERSBURG, VA



10-year professional veteran Danny Cruz was John Hackworth's first coaching hire at Louisville City. Cruz has known Hackworth since Cruz was 16, playing for Hackworth as part of elite youth development teams. Cruz, a native of Petersburg, Va., was a successful pro, playing 137 career games at the MLS level. The former UNLV star was a third round draft pick in the 2009 MLS SuperDraft before playing with Houston Dynamo, D.C. United and Philadelphia Union. A fiery competitor, Cruz brings intensity, experience and tactical knowledge to bolster Hackworth's technical staff.

SCOTT BUDNICK

GOALKEEPER COACH | LOUISVILLE, KY



After John Hackworth brought in Budnick as interim goalkeeper coach in August 2018, the move went so well that he was offered the permanent position on Jan. 7, 2019. A wealth of goalkeeping knowledge, Budnick's tactical mind and steady demeanor imbues the goalkeepers union with confidence and courage. Budnick gained his knowledge through decades of experience at William and Mary, with the Richmond Kickers and Hampton Roads Hurricanes in the USISL and playing stints in English and German as well as time with three clubs in the MLS (Tampa Bay Mutiny, Miami Fusion and New England Revolution). Prior to LouCity, Budnick had a successful law while coaching locally.

TECHNICAL STAFF

STUART WRIGHT

Director of Sports Performance and
Head Athletic Trainer

BEN HULSMAN

Team Equipment Manager

MEDICAL STAFF

MARK PUCKETT, MD

Team Physician

W. MICHAEL HUGHES JR, DO

Team Physician

NICHOLAS KENNEY, MD

Team Orthopedic Surgeon

CHELSEA POOLE, MS

Assistant Athletic Trainer

FRONT OFFICE

JOHN NEACE

Chairman

BRAD ESTES

President

MITCH RIED

Vice President of Sales
and Marketing

JAMES O'CONNOR

Executive Vice President
of Development

DAVENA VOWELS

Vice President of
Operations

CARLY BROWN

Director of Finance

SHERYL MOORE

Staff Accountant

RUSTY FAZIO

Director of Information
Technology

JON RYAN NEACE

Information Technology
Technician

PATRICK STEWART

Partnership
Development Director

PAT DENBOW

Director or Partner
Strategy

BRAD GORDON

Partnership
Development Director

DYLAN TERRY

Partnership
Development Manager

EIMAN ZUBERI

Partnership Fulfillment
Coordinator

MARIO SANCHEZ

Youth Academy Director

KRISTEN WALLACE

Academy Executive
Director

SIMON BIRD

Louisville City FC
Academy Director

TIM NOWAK

Racing Louisville FC
Academy Director

BROCK HICKAM

Junior Academy Director
for Boys and Girls

THABANE SUTU

Academy Goalkeeping
Director

CRAIG JONES

Academy Director of
Soccer Operations

DAVE WALKOVIC

Manager of Ticket
Operations

BRENDA MORAN

Business Development
Specialist

JARROD ROCKHOLD

Business Development
Specialist

GABE SCHENKER

Business Development
Specialist

TERRENCE SPENCE

Business Development
Specialist

BRAD GRAHAM

Membership
Development Specialist

JONATHAN LINTNER

Senior Director of PR
and Communications

EVAN FLOYD

Partnerships and
Community Relations
Executive

COLE BOLLINGER

Social Media Manager

BRITTNEY GORTER

Director of Marketing

RACHEL REGENAUER

Graphic Designer

KYLE SPRIGGS

Creative Content
Producer

TOP 5
COLLEGE IN
KENTUCKY
(College Choice 2017, 2018)

LOUISVILLE'S DOWNTOWN UNIVERSITY

Out to change the world, starting in our own backyard.



ON CAMPUS | ONLINE | SPALDING.EDU



GK
CHRIS HUBBARD

#1

2019 SEASON: 24 GP | 24 GS - 2,220 MIN | 78 SV | 29 GA | 5 CS
LAST MATCH: vs SLC | 90 MIN | 3 GA | 2 SV



D
ALEXIS SOUAHY

#3

2019 SEASON: 24 GP | 19 GS - 1,614 MIN | 1 G | 2 A | 2 YC | 1 RC
LAST MATCH: vs PIT | 90 MIN | 79.5% PA | 1 FOUL | 1 CL



D
SEAN TOTSCH

#4

2019 SEASON: 33 GP | 26 GS - 2,365 MIN | 1 G | 1 A | 88 CL | 2 YC
LAST MATCH: vs SLC | 70 MIN | 84.7% PA | 1 FOUL



D
JIMMY OCKFORD

#5

2019 SEASON: 16 GP | 16 GS - 1,422 MIN | 2 G | 66 CL | 4 YC
LAST MATCH: vs PIT | 55 MIN | 82.7% PA | 2 FOULS | 1 CL



D
WES CHARPIE

#6

2019 SEASON: 28 GP | 28 GS - 2,392 MIN | 1 A | 63 CL | 8 YC
LAST MATCH: @ NC | 90 MIN | 79.5% PA | 9 CL



MF
MAGNUS RASMUSSEN

#7

2019 SEASON: 36 GP | 35 GS - 3,045 MIN | 17 G | 3 A | 7 YC
LAST MATCH: vs SLC | 90 MIN | 1 G | 5 SH | 1 FOUL



D
AKIL WATTS

#8

2019 SEASON: 4 GP | 3 GS - 236 | 8 CL
LAST MATCH: vs PIT | 90 MIN | 76.7% PA | 2 CL | 1 FOUL



F
LUKE SPENCER

#9

2019 SEASON: 35 GP | 20 GS - 2,004 MIN | 10 G | 4 A | 2 YC
LAST MATCH: vs PIT | 35 MIN (SUB) | 80% PA | 10 TOUCHES



F
BRIAN OWNBY

#10

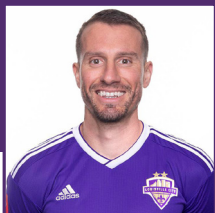
2019 SEASON: 24 GP | 20 GS - 1,849 MIN | 2 G | 5 A | 4 YC | 1 RC
LAST MATCH: vs PIT | 84 MIN | 84.2% PA | 3 SH | 1 CL



MF
NIALL McCABE

#11

2019 SEASON: 33 GP | 32 GS - 2,924 MIN | 3 G | 6 A | 2 YC | 1 RC
LAST MATCH: vs PIT | 26 MIN (SUB) | 77.8% PA | 24 TOUCHES



MF
CORBEN BONE

#13

2019 SEASON: GP 6 | GS 2 - 186 MIN

LAST MATCH: vs PIT | 64 MIN | 64.7% PA | 1 A | 26 TOUCHES



F
ABDOU THIAM

#14

2019 SEASON: 26 GP | 12 GS - 1,236 MIN | 3 G | 4 A | 4 YC

LAST MATCH: vs PIT | 64 MIN | 1 SH | 55.6% PA | 33 TOUCHES



D
PAT McMAHON

#15

2019 SEASON: 17 GP | 10 GS - 1,141 MIN | 1 G | 2 A | 30 CL | 4 YC

LAST MATCH: @ NC | 90 MIN | 84.1% PA | 3 CL



F
CAMERON LANCASTER

#17

2019 SEASON: 18 GP | 7 GS - 730 MIN | 5 G | 1 A

LAST MATCH: vs PIT | 90 MIN | 3 SH | 77.8% PA | 1 FOUL



D
OSCAR JIMENEZ

#19

2019 SEASON: 37 GP | 37 GS - 3,341 MIN | 1 G | 7 A | 59 CL | 4 YC

LAST MATCH: vs PIT | 90 MIN | 86.5% PA | 107 TOUCHES | 74 P



F
GEORGE DAVIS IV

#22

2019 SEASON: 32 GP | 12 GS - 1,215 MIN | 3 G | 2 A | 1 YC
LAST MATCH: @ SLC | 2 MIN (SUB) | 100% PA



MF
NAPO MATSOSO

#27

2019 SEASON: 23 GP | 20 GS - 1,701 MIN | 5 G | 1 A | 4 YC | 1 RC
LAST MATCH: vs PIT | 35 MIN (SUB) | 95.8% PA | 2 FOULS



F
ANTOINE HOPPENOT

#29

2019 SEASON: 30 GP | 20 GS - 1,978 MIN | 5 G | 2 A | 4 YC
LAST MATCH: vs PIT | 26 MIN (SUB) | 10 TOUCHES | 1 FOUL



MF
PAOLO DeIPPICCOLO

#36

2019 SEASON: 17 GP | 10 GS - 915 MIN | 2 G | 3 YC
LAST MATCH: vs PIT | 55 MIN | 83.7% PA | 47 TOUCHES



GK
BEN LUNDT

#39

2019 SEASON: 12 GP | 12 GS - 1,080 MIN | 27 SV | 11 GA | 4 CS
LAST MATCH: vs PIT | 90 MIN | 1 SV | 3 GA



D
JONATHAN GOMEZ

#42

2019 SEASON: N/A

LAST MATCH: vs PIT | 6 MIN | 100% PA | 8 TOUCHCES



MF
DAMIR BEGANOVIC

#45

2019 SEASON: N/A

LAST MATCH: N/A



MF
ELIJAH WYNDER

#61

2019 SEASON: N/A

LAST MATCH: N/A

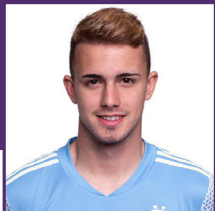


MF
DEVON "SPEEDY" WILLIAMS

#80

2019 SEASON: 30 GP | 30 GS - 2,760 MIN | 1 G | 1 A | 7 YC

LAST MATCH: vs PIT | 90 MIN | 89% PA | 1 G | 2 SH | 1 KP



GK
MUAMER UGARAK

#91

2019 SEASON: N/A

LAST MATCH: N/A

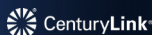
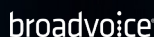


Kick off your cloud technology journey with Virtual Telecomm.

Cloud Phones • SD-WAN • Internet • Security



Thank you to the following carriers for partnering with Virtual Telecomm & Louisville City FC.



virtualtelecomm.com 502.400.8600

**WE LOVE LOUISVILLE.
WE LOVE SOCCER.
WE LOVE LOU CITY.**

LISTEN TO THE GAMES LIVE:



LOUISVILLE CITY FOOTBALL CLUB

2020 SCHEDULE

3.7	@ NORTH CAROLINA FC	W 1-0
7.12	PITTSBURGH RIVERHOUNDS SC	L 1-3
7.18	SAINT LOUIS FC	8:00 PM
7.25	SPORTING KC II	8:00 PM
7.29	SPORTING KC II	8:00 PM
8.8	INDY ELEVEN	8:00 PM
8.12	SPORTING KC II	8:00 PM
8.15	LOUDOUN UNITED FC	8:00 PM
8.26	INDY ELEVEN	8:00 PM
8.29	@ SAINT LOUIS FC	8:00 PM
9.5	@ INDY ELEVEN	7:00 PM
9.12	SAINT LOUIS FC	7:30 PM
9.16	@ INDY ELEVEN	7:00 PM
9.19	MEMPHIS 901 FC	7:30 PM
9.26	@ SAINT LOUIS FC	8:00 PM
10.3	SPORTING KC II	7:30 PM

HOME

AWAY

502-LOU-CITY



LOUCITY.COM



VOLUFORMS

PRINT • PROMOTE • DISTRIBUTE

Putting Your Best Brand Forward.



voluforms.com  

zies
yers • Flags
s • Bags • Stickers
ners • Menus • Glassware
s • Rack Cards • Bags • Stickers
ns • Uniforms • Planners • Hats • Flyers
Branded Wearables • Brochures • Door Han
arking Passes • Wristbands • Bandanas •
ngers • Rack Cards • Bags • Stickers • Key
ow Decals • Game Programs • Uniforms •
ks • Bags • Stickers • Keychains • Magnet
Window Decals • Game Programs •
Backpac

LOUISVILLE CITY FC OFFICIAL BROADCAST PARTNER

WATCH THE 2020 SEASON GAMES ON THESE STATIONS



**NEW! LIVE STREAMING GAMES
ON WDRB NOW APP**

**Download for your Big Screen or Tablets*



WDRB IN THE MORNING

THE SOURCE

SIGNATURE HEALTHCARE

JOIN OUR TEAM

NURSES | C.N.A'S
NURSE PRACTITIONERS
DIETARY STAFF

COMPETITIVE WAGES / FLEXIBLE SCHEDULES
OUTSTANDING BENEFITS / GROWTH OPPORTUNITIES

8 SKILLED NURSING CENTERS
SERVING THE LOUISVILLE MARKET

Apply On-Line at LTCRevolution.com
TEXT "NEWJOB" TO 97211



Kentucky's insurance company. If you're keeping score.



Things can change in an instant with one kick — and in life. So it's nice to know that when you experience loss from a storm or accident, Kentucky Farm Bureau Insurance will stand behind you with the winning service you deserve. Find your local agent at kyfb.com.

KENTUCKY FARM BUREAU



INSURANCE

BIG ON COMMITMENT.®

COMMUNITY PARTNERS

Algood Food Co.	Kentucky Adult Soccer
All Pro Satellite, DISH Authorized Retailer	Kentucky Bourbon Barrel, LLC
Travis Roofing Supply	Ladder Now, LLC
Andriots	Limestone Title
Cardinal Pointe Financial	LL Flex
Argent Trust Co	Louisville Soccer
Atlas Companies	Midwest Metals
Automated Living	Mindel Scott
Belfor Property Restoration	Money Concepts
Bumper to Bumper	Museum Bees
Briston Bar & Grille	Northwestern Mutual
C&I	Oasis Solutions Group
Dant Clayton	Office Resources, Inc.
DD Williamson	PNC
Delta Services	Premier Health & Fitness
DMLO	PremPack
Farah LLC	Priority Radiology
Dugan & Meyers	RegenEn Solar
ER Tree Care, LLC	Regions Bank
Fibreworks	Thomas Car Wash
First Kentucky Trust	USI Insurance Services
German American Bank	Vendome Copper Works
Hyland Insurance	Windstone
Insuramax	Walker Mechanical
iSports	White Clay Consulting
	Zoeller

CHAMBER AND ASSOCIATION PARTNERS

Jeffersontown
Louisville Independent Business Alliance
Main Street Association
Nulu Business Association
Riverport Business Association
St. Matthews Chamber



Uplift the spirit of Kosair Kids year-round during

CHRISTMAS IN *July*

Make 2020 a special holiday season for families in our community. Learn how at:

kosair.org/celebrate

