

# 1960



# BOSTON PATRIOTS

# THE PRESIDENT

**William H. Sullivan, Jr.**

W. H. (Bill) Sullivan, a late and fast riser in the business world, has a background of association with sports and was the natural man to head up Boston's entry into professional football.

A 1937 graduate of Boston College, Sullivan stayed at his alma mater to serve as publicity director for three seasons. When former Boston College Coach Frank Leahy went to Notre Dame in 1941, Sullivan was hired as Leahy's personal secretary.

Entering the Navy in 1942, he was assigned to the Aviation Division and then to the U. S. Naval Academy Sports Program.

After the War, he became publicity director of the Boston Braves baseball team, serving from 1946 to 1952. While with the Braves, he started the now-famed Jimmy Fund for cancer research.

In 1952, Sullivan joined Leahy and George Sargent, now a part-owner of the Patriots, in forming the All-Star Sports Corporation, a firm which made sports television films. He also coordinated Radio-TV publicity for the Little Leagues.

Sullivan entered the business world in 1955 when he was made Assistant to the President of the Metropolitan Coal and Oil Co. In three years he rose to the President's chair and has also become president of the Petroleum Heat and Power Co. and the Frost Coal and Oil Co.

Professional football for his beloved Boston was a dream of Sullivan for years, and he made frequent application for a franchise. The dream came alive with the American Football League.



**BILL SULLIVAN**

## **1960 BOSTON PATRIOTS Media Guide**

**EDITOR: JOE CRONIN**

**ASSISTANCE: TOD MAHER  
BRENT HENSEL  
PAUL BENNETT  
MATT MATUSHEFSKI**



# BOSTON PATRIOTS

**Address:** 520 Commonwealth Ave., Boston 7.

**Head Coach:** Lou Saban (Indiana).

**Nickname:** Patriots.

**Colors:** Red, White and Blue.

**Stadium:** Boston University Field (27,500).

**President:** William H. Sullivan, Jr.

**Owners:** William H. Sullivan, Jr., John Ames, Dean Boylan, Dominic DiMaggio, Edward McMann, Daniel Marr, George Sargent, Paul Sonnabend, Joseph Sullivan, L. Edgar Turner.

**General Manager:** Ed McKeever.

**Assistant Coaches:** Mike Holovak (also Director of Player Personnel), Joel Collier, Bob Miller, Jerry Smith.

**Publicity Director:** Gerry Moore.

**Business Manager:** John J. Fitzgerald.

**Publicity Assistant:** Jack Grinold.

**Local Radio:** WEEI.

**Telephone:** Patriot Office (COngress 2-1776)

**Ticket Prices:** Box Seats (\$6.00); Reserved Side Line \$5.00).

## Ed McKeever

Frank Leahy once called Ed McKeever "the best procurer of football players in America." Named to the general manager's post of the Patriots in mid-January of this year, McKeever proved out Leahy's appraisal by touring the country searching out, and signing, top talent. The 49-year-old native of Lubbock, Texas, which still claims him, is a proven talent in football administration. Recently voted the outstanding athlete at Texas Tech of the last 25 years, McKeever was introduced to coaching as an assistant at Boston College. He was an assistant, then head coach at Notre Dame, Cornell and the University of San Francisco, and also served as assistant at L.S.U. In the old All-American Conference, he was head coach of the Chicago Rockets. Until hired by the Patriots he was an executive with a Louisiana industrial firm, but kept his football hand in as a full-time player scout for a pro team.



**ED McKEEVER**

# THE HEAD COACH

## Lou Saban

There was a flood of 73 applications for the Boston coaching job last winter, but among them the name of Lou Saban was missing. "I didn't apply," Saban explained later, "because I knew they'd want somebody pretty special."

Saban was right in his thoughts, but wrong in not applying. The intensive search led to this fast-rising 38-year-old who had just completed an unbeaten (9-0) season at Western Illinois.

Saban, a native of LaGrange, Ill., participated in track and football at Lyons Township High. He attended the University of Indiana and had the distinction, in separate seasons, of being named All-Big Ten quarterback and All-Big Ten fullback. He was named most valuable player and captain of the 1943 team.

In 1946, he began his pro playing career with the Cleveland Browns of the All-America Conference. As captain of the team for all four of his playing seasons, he led the Browns to four straight Conference titles and was twice named All-Pro linebacker although he weighed only 200.

In 1950, Saban was named head coach at Case Institute, staying four seasons before going to assistant jobs at Washington and Northwestern. He took over as head coach at Western Illinois University in 1957, built successive won-lost-tied seasons of 5-4-1, 6-1-1, and 9-0.



**LOU  
SABAN**

### **BOB (RED) MILLER**

#### **Assistant Coach**

Guard for Western Illinois in 1947-48-49 . . . Named Most Valuable Player on squad each year as well as Illinois Athletic Conference MVP in '47 . . . 32-year-old native of Macomb, Ill. is 6', weighs 210 . . . Married, two children . . . High school mentor for three seasons before becoming line coach at Carthage (Ill.) Coll. in 1954 . . . Switched to Western Illinois in '57 where he was head swimming coach as well as line coach under Saban.





Left to right—Assistant Coach Mike Holovak, Assistant Coach Bob Mi, Head Coach Lou Saban, Assistant Coach Joe Collier, Assistant Coach Jerry Smith.

#### **MIKE HOLOVAK**

##### **Player Personnel Manager and Assistant Coach**

Joined Patriots after spending nine years as head coach at Boston College, longest reign of any Eagle gridiron mentor . . . Born in Lansford, Pa. Sept. 19, 1919 . . . 6'2", 225 lbs. . . . Married, with two daughters . . . Was regular fullback at Boston College three seasons . . . As soph in 1940, played on Eagle club that won national title and defeated Tennessee in Orange Bowl . . . Tallied 3 TDs against Alabama in Orange classic two years later as BC co-captain . . . Served 15 months in Pacific with P.T. boat squadron . . . FB for LA Rams in '46 and Chicago Bears in '47 and '48 . . . Came to BC as freshman coach in '49 . . . Succeeded Denny Myers as head coach in '51.

#### **JOEL COLLIER**

##### **Assistant Coach**

Came to Patriots with Saban from Western Illinois where he served as end coach for past four seasons . . . Was also school's freshman basketball mentor . . . 27-year-old, 6'2", 200 lb. graduate of Northwestern in 1954, is native of Rock Island, Ill. . . . Married and father of two.

#### **JERRY SMITH**

##### **Assistant Coach**

Spent 1959 campaign as line coach at U. of Dayton . . . 29, 6', scales 227 and is native of Dayton . . . Attended U. of Wisconsin . . . All-Big Ten guard in 1951 . . . Played in East-West Shrine game . . . Offensive guard for San Francisco 49ers in 1952 and 1953 . . . After two years in Army, split 1956 season between 49ers and Green Bay Packers as defensive end before retiring from active play.

### **TONY SARDISCO**

**Guard** . . . **6'3"** . . . **225 lbs.** . . . **Tulane**  
Played three years varsity ball at Tulane University . . . Named to second team All-Southeastern Conference in 1955 . . . Played in Blue-Gray and College All-Star games and Senior Bowl . . . Tried out with Washington Redskins in '56 . . . In service in 1957-58 . . . With Calgary Stampeders of Western Interprovincial Football Union last season . . . From Bossier City, La. . . . Married and has one daughter.

### **GEORGE GILCHRIST**

**Tackle** . . . **Born Jan. 28, 1929** . . . **6'1"** . . . **275 lbs.** . . . **Tennessee St.**  
Veteran of NFL and Canadian Big Four . . . Earned four grid letters at Tennessee State and captained team in senior year . . . Spent two years in Army before joining Chicago Cardinals in 1953 after fling with Toronto Argonauts in '51 . . . Played for Cards for two seasons . . . With Hamilton Tiger-Cats of Big Four part of 1956 . . . Born in Memphis, Tenn., but now makes his home in Chicago.

### **BOB DEE**

**End** . . . **Born May 18, 1933** . . . **6'3"** . . . **234 lbs.** . . . **Holy Cross**  
Former National Football League performer comes out of retirement to join Patriots . . . Drafted by Washington Redskins in 1955 after four year varsity career with Holy Cross College . . . Played in 1955 East-West Shrine game . . . Joined Redskins in '57 after hitch in Marines as First Lieutenant . . . Played for Quantico in 1955-56 . . . Was defensive end for Washington in 1957-58 . . . Served as line coach at Holy Cross last season . . . His mother was member of 1928 US Olympic team . . . Has twin sister . . . Lives in Braintree, Mass.

### **GINO CAPPELLETTI**

**Halfback** . . . **6'** . . . **190 lbs.** . . . **Minnesota**  
Played three years of varsity ball for University of Minnesota, pro football in Canada, service and semi pro ball . . . Ranked second in nation in place kicking in 1954 when he converted 18 of 20 PAT attempts for Gophers (the other two being blocked) . . . Was QB and defensive half in college and called signals for the Sarnia Golden Bears of the Ontario Rugby Football Union in 1958 . . . Named to all-Army team in '58 . . . Played semi pro last season . . . Married . . . Hails from Keewatin, Minn.

### **ABE COHEN**

**Center and Linebacker** . . . **5'11"** . . . **230 lbs.** . . . **Chattanooga**  
Played four years varsity for University of Chattanooga and was named to Little All-America team in 1955 . . . Played in Shrimp Bowl . . . Drafted by New York Giants in 1955 NFL selections . . . Army veteran . . . Makes home in Daly City, California . . . Married and has one child . . . Also wrestled in college.



### **FRANK GATSKI**

**Center . . . Born March 10, 1922**      **6'3" . . . 250 lbs. . . . Marshall**  
Veteran of both the National Football League and old All-America Conference . . . Was a member of the original Cleveland Browns when AAC was formed in 1946 . . . Played college ball at Marshall for three years . . . Served in Army for three and half years and was in ETO for 18 months . . . Returned to college after World War II and earned degree . . . Became regular center for Browns in 1948 after Mike Scarry retired . . . Played 119 consecutive games for Cleveland before being traded to Detroit Lions before 1957 season for draft choice . . . Played all 12 league games for Lions in '57 . . . Out of pro ball last two seasons . . . From Farmington, West Virginia, now makes his home in Grant Town, W. Va. . . . This will be his 13th season as player in pro ranks.

### **FRED BRUNEY**

**Halfback . . . Born Dec. 30, 1931**      **5'11" . . . 185 lbs. . . . Ohio State**  
Won three letters in football at Ohio State and was selected most valuable player by his teammates in 1952 . . . Named to All-Big Ten and All-Midwest elevens in senior year . . . Broke into pro football in 1953 with San Francisco 49ers of NFL as defensive back . . . Intercepted five passes in rookie year . . . Spent 1954-55 seasons in Army . . . Played two games with 49ers in 1956 after discharge from service . . . Traded to Pittsburgh Steelers in '57 and returned five kickoffs 101 yards and intercepted one enemy pass . . . Obtained from Steelers by Washington Redskins in May, 1958, for a draft pick . . . Played in East-West Shrine, Senior Bowl and All-Star game before joining pro ranks . . . From Martin's Ferry, Ohio, where he has been teaching and coaching the past two seasons.

### **PETE PICCIRILLO**

**Guard and Tackle**      **6'1" . . . 240 lbs. . . . Indiana**  
Played three years of varsity ball for the University of Indiana, alternating between guard and tackle . . . Won All-City and All-County honors in high school . . . Hampered by injuries during junior year with Hoosiers . . . Home is Newark, New Jersey . . . Coached at Rhodes High School in Cleveland, Ohio, last season.

### **JERRY McFARLAND**

**Guard and tackle**      **6' . . . 250 lbs. . . . Michigan State**  
Attended Detroit Lion's training camp last Summer . . . Spent three years in the Army before going to Michigan State and played service ball with 187th Airborne RCT eleven . . . Hails from Birmingham, Alabama.

### **DICK SOERGEL**

**Quarterback**      **6'3" . . . 185 lbs. . . . Oklahoma State**  
Was one of the nation's leading collegiate passers in 1959 . . . Completed 93 of 155 aerials for 1102 yards via the air lanes and eight touchdowns . . . Played three years of varsity football at Oklahoma State University . . . Hails from Oklahoma City.

**Halfback** **6'1" . . . 187 lbs. . . . Syracuse**  
Came to U.S. from his native Germany at the age of 12 and now makes his home in Whitehouse, N.J. . . . Carried 83 times in 1958 for 360 yards and caught 13 passes for 117 yards . . . Scored 22 points in junior year on three TDs and four PATs . . . Returned seven kickoffs for 162 yards and four punt returns for another 93 . . . In 1959, his senior year at Syracuse, Schwedes was Orange's top rusher . . . Has good speed . . . Fourth round choice of Baltimore Colts in 1960 NFL draft.

**Quarterback** - 6'2" . . . 210 lbs. . . . **Clemson**  
Clemson's all-time pass king hails from Greenwood, South Carolina . . . Set Tiger records with 141 completions, 50.4 completion percentage and 2034 aerial yards during varsity career . . . Was co-captain during his senior year . . . Had shoulder operation prior to 1959 season . . . His 258 yards via aerials against Furman in '57 is another school and conference record . . . Named to second All-Atlantic Coast Conference team in '58 and first team in 1957 and 1959 . . . His 11 touchdown passes in '57 are an ACC record . . . Scored five TDs in '58 . . . Was back of the year in ACC in '57 when he had greatest year with 46 completions in 95 pass attempts for 841 yards and 1038 yards total offense . . . Played in Blue-Gray game.

**Halfback** **5'9"** . . . **185 lbs.** . . . **Northwestern**  
First draft choice of the Philadelphia Eagles in this year's NFL selections . . . Returned eight kick-offs for 22.5 yards average in 1957 . . . Finished third in nation in scoring in 1958 with 76 points on 12 touchdowns and four PATs . . . Selected to All-Big Ten first team in 1958 and 1959 . . . Finished fourth in Big Ten rushing in '58 with 377 yards in seven league games . . . Excels on kick-off and punt returns . . . Home town is Springfield, Ohio.

**Quarterback**                      **6'1"** . . . **190 lbs.** . . . **Holy Cross**

From Pikesville, Maryland . . . Graduated from Loyola High School in Baltimore where he was all State quarterback in 1954 and captained football and basketball teams . . . Played lacrosse as well as football for the Crusaders . . . In 1956 completed 21 of 48 passes for 346 yards and three touchdowns . . . In '57 was picked by Syracuse as "Player of the Year" to appear against them and won O'Melia award as outstanding player in Holy Cross—Boston College game . . . Led Crusaders in scoring in '57 with 45 points (Five TDs and 15 PATs); and completed 74 of 159 passes for 1297 yards . . . Scored 20 points (two TDs, 4 PATs) in '59 while completing 59 of 137 aeriels for 976 yards and four TDs . . . Appeared on cover of 1958 NCAA Football Guide after finishing fifth in nation in total offense . . . Obtained in trade with Los Angeles Chargers.



## **BOB HORAN**

**Halfback** 5'11" . . . 192 lbs. . . . Connecticut

From Stamford, Conn., where he was most valuable player in his senior year in high school . . . Captained high school eleven and was named to All-State and High School All-America teams . . . Earned three letters in football at University of Connecticut . . . Also received letter in track . . . Scored one touchdown in 1957 while gaining 174 yards in 32 carries . . . Also caught two passes for 46 yards . . . Paced Huskies in scoring in 1958 with 58 points, (eight TDs and five 2-point PATs) . . . Leading ground gainer in '58 and '59, netting 478 in junior year . . . Took 12 passes in '58 for 164 yards.

## **JIM CRAWFORD**

**Halfback** 6' . . . 185 lbs. . . . Wyoming

Voted back of the year in Skyline Conference in 1956 and outstanding player in 1956 Sun Bowl game . . . Played in Senior Bowl and East-West Shrine game . . . Carried 18 times for 103 yards in '56 Sun Bowl game against Texas Tech . . . Scored 31 points on five TDs and one PAT in his junior year with U. of Wyoming Cowboys . . . Rushed for 431 yards in '55 . . . Led nation in rushing in senior year when he carried 200 times for 1,104 yards . . . Scored 96 points in '56 on 14 TDs and 12 PATs, fourth best among major colleges, returned 12 kickoffs for 306 yards and ran pass interception for 60 yards . . . Was 14th draft choice of Pittsburgh Steelers (NFL) in '57.

## **ROGER KRANZ**

**Fullback** 6'4" . . . 226 lbs. . . . New Mexico

Kranz earned 11 letters in high school (football, basketball, track and baseball) . . . Played both tackle and end before being switched to fullback in his final year at the University of New Mexico . . . One of best blocking backs in Skyline Conference last season . . . Averaged 9.7 yards per carry for Lobos last Fall . . . From Hales Corners, Wisc.

## **BOB YATES**

**Tackle** 6'1" . . . 220 lbs. . . . Syracuse

In addition to his work on the Syracuse line, Yates added to the Orange offense with his educated toe during the past two seasons . . . In 1958 he scored seven points on one field goal and four PATs . . . Last season he starred for Syracuse both on defense and with toe . . . Home town is Montpelier, Vermont . . . Seventh choice of New York Giants in this year's NFL draft.

## **AL GERLICK**

**Guard** 5'9" . . . 215 lbs. . . . Syracuse

Played three years varsity ball for Syracuse University . . . Also played tackle for Orange . . . Scored touchdown and three PATs in 1958 . . . Teammate of Ger Schwedes and Bob Yates in college . . . From Campbell, Ohio . . . Nickname is "Cannonball."

## PHIL LAVOIE

### Fullback

6' . . . 205 lbs. . . . South Carolina

From Lynn, Mass., where he starred in high school ball . . . Enrolled at South Carolina in 1954 and played freshman ball in '55 . . . Didn't play in '56 . . . In 1957 he carried 22 times for 122 yards . . . Was the Game-cock's leading scorer in '58 until slowed down by arm injury.

## ALAN MILLER

### Halfback

6' . . . 188 lbs. . . . Boston College

Played three years under Patriots' assistant coach Mike Holovak at Boston College . . . In 1956 carried 73 times for 414 yards to pace the Eagles' ground attack and intercepted three enemy passes for 114 yards . . . Carried 111 times in '57 for 484 yards, caught seven passes for 66 yards and scored five touchdowns . . . Crossed the goal line three times in '56 . . . Netted 421 yards in 89 attempts as senior in 1958 and scored five TDs . . . Hails from Devon, Conn.

# 1960 DRAFT LIST

## BOSTON

### (First Selections)

Buddy Allen, hb, Utah State.  
Ron Burton, hb, Northwestern.  
Dale Chamberlain, fb, Miami, O.  
Henry Christopher, e, SMU.  
Dan Colchicco, e, San Jose State.  
Jack Cummings, qb, North Carolina St.  
James Davis, c, Oklahoma.  
Sarafine Fazio, c, Pittsburgh.  
Max Fugler, c, LSU.  
Jim Gardner, t, Duke.  
James Goodyear, t-g, Wake Forest.  
Dave Harris, hb, Kansas.  
Al Henderson, t, Colorado State.  
James Hickman, t-g, Penn. State.  
Robert Kranz, fb, Penn. State.  
Joe Kulbacki, hb, Purdue.  
Dee Mackey, e, E. Texas St.  
Leon Manley, g, W. Texas St.  
Cliff Manning, t-g, Hardin-Simmons.  
Pete Manning, e, Wake Forest.  
Edward Mazurek, t, Xavier (O.).  
Bill Meglen, g, Utah State.  
Frank Mestnik, fb, Marquette.  
Ron Mix, t, USC.  
Irvin Nikolai, e, Stanford.  
Jim Prestel, t, Idaho.  
Bob Salerno, g, Colorado.  
Ger Schwedes, hb, Syracuse.  
Richard Soergel, Richard, qb, Oklahoma St.  
Larry Wagner, t, Vanderbilt.  
Harvey White, qb, Clemson.  
Tirey Wilemon, hb, SMU.  
Gary Wisener, e, Baylor.

### (Second Selections)

Dave Ames, hb, Richmond.  
James Boeke, t-g, Heidelberg.  
Billy Brewer, qb, Ole Miss.  
Emanuel Congedo, t-g, Villanova.  
Pat Dye, t-g, Georgia.  
John Farrington, e, Prairie View.  
Rich Grecni, c, Ohio U.  
Bud Jones, hb, SMU.  
Don Kacmarek, t-g, North Dakota.  
John Lawrence, t-g, North Carolina St.  
Ron Maltony, t-g, Purdue.  
Bobby Pate, hb, Presbyterian.  
Jack Rudolph, hb, Georgia Tech.  
Frank Sally, t-g, California.  
Bob Spada, e, Duke.  
Pete Tunney, hb, Occidental.  
Jim Webster, hb, Marquette.  
John Wilcox, t-g, Oregon.



## PATRIOTS ON OFFENSE

LE	LT	LG	C	RG	RT	RE
81 Colclough	75 McGee	63 Leo	56 Cudzik	65 Davis	76 Discenzo	86 Lofton
45 J. Greene	60 Lee	62 Cohen	54 Brown	62 Cohen	60 Lee	42 Soltis
QB						
11 Songin						
14 T. Greene						

### SPECIALISTS

Passers—Songin, T. Greene  
 Punters—T. Greene, Cappelletti  
 letti  
 P.A.T.—Cappelletti, Crawford

LE	LT	RT	RE
89 Dee	71 Crow	73 Jagielski	78 Richardson
83 Jacobs			85 McComb

## PATRIOTS ON DEFENSE

LLB	MLB	RLB	LS	LCM	RCM	RS
80 Rudolph	64 Sardisco	52 Bennett	33 Brune	25 O'Hanley	20 Cappelletti	25 O'Hanley
		54 Brown	41 Doyle	40 Shonta	25 O'Hanley	
				42 Soltis		

# 1960 BOSTON PATRIOTS TRAINING CAMP ROSTER (UMass-Amherst)

No	Player	Pos	Hgt	Wgt	Birthdate	College
53	Tom Addison *	LB	6-3	230	12APR36	South Carolina
	Dick Aloise	E	6-5	230	4JUL36	Syracuse
35	Pat Altieri	CB	5-11	160	36	Brown
	Bob Anastas	QB			34	American Int'l
	Jack Atchason *	OE	6-4	215	16NOV36	Western Illinois
83	Al Badger	DE	6-3	200		Sou. Connecticut
	Howard Barlow	C	6-3	205	37	Southern Calif.
26	Walter Beach *	DB	6-0	185	31JAN35	Central Michigan
52	Phil Bennett	LB	6-3	225	14FEB35	Miami of Florida
34	Joe Biscaha *	OE	6-1	190	1JUN37	Richmond
70	Steve Bonner	T	6-4	256		Clark (GA)
51	Bill Brown	LB	6-1	230	25APR36	Bridgeport/Syracuse
64	Hardy Brown	LB	6-0	193	8MAY24	SMU/Tulsa
33	Fred Bruney	DB	5-11	188	30DEC31	Ohio State
	Jim Bryant	G	6-2	204	34	No. Carolina Central
	Jim Buonopane	G	5-10	195	33	Holy Cross
22	Ron Burton	OHB	5-10	190	25JUL36	Northwestern
85	Al Cann	FB		217	35	Syracuse
20	Gino Cappelletti	DB	6-0	190	26MAR34	Minnesota
33	Wray Carlton	HB	6-2	225	18JUN37	Duke
	Joe Casieri					none
23	Dick Christy *	HB	5-10	192	24NOV35	No. Carolina State
62	Abe Cohen	OG	5-11	230	23MAR33	Tenn.-Chattanooga
81	Jim Colclough	OE	6-0	185	31MAR36	Boston College
	Phil Cordero	DB	6-3	210	37	San Jose State
40	Bobby Cox	QB	6-0	196	1JUN34	Washington/Minnesota
30	Jim Crawford	FB	6-1	200	26AUG35	Wyoming
77	Bob Cross	OT	6-4	245	4APR31	Kilgore (TX) JC
34	Jake Crouthamel	HB	5-11	195	27JUN38	Dartmouth
72	Al Crow	DT	6-6	260	20AUG32	William & Mary
54	Walt Cudzik	C	6-2	226	21FEB32	Purdue
	Dick D'Allesandro	T				Brandeis
77	Bill Danenhauer	DE	6-4	245	3JUN34	Emporia (KS) State
65	Jack J. Davis	OG	6-0	226	12MAR32	Maryland
	Jack Owen Davis	OG	6-2	235	19FEB33	Oklahoma/Arizona

\* - later additions

1960 BOSTON PATRIOTS TRAINING CAMP ROSTER (UMass-Amherst)

No	Player	Pos	Hgt	Wgt	Birthdate	College
89	Bob Dee	DE	6-3	234	18MAY33	Holy Cross
74	Jerry DeLucca	OT	6-3	250	17JUN36	Mid. Tennessee St.
61	Ed Denk	OG	6-0	240	37	Cincinnati
	Fred Dennen	E	6-5	245	38	New Hampshire
15	Tom Dimitroff *	QB	5-11	200	6JUN35	Miami of Ohio
74	Donald DiReinzio	DT	6-4	245	37	Western St. (Colorado)
76	Tony Discenzo	OT	6-5	240	3FEB36	Michigan State
41	Skip Doyle	DB	6-0	190	25MAR30	Ohio State
	Harry Drivas	QB			36	Connecticut
52	Serafina Fazio	LB	5-11	230	28FEB39	Pittsburgh
65	Bob Fee	LB	6-0	225	35	Indiana
43	Stan Flowers	HB	6-1	210	6AUG36	Georgia Tech
	Jim Forbes	G	6-2	230	37	No. Carolina Central
46	Larry Garron	FL	6-0	185	23MAY37	Western Illinois
	Isiah Gatling	HB			32	N. Carolina Central
52	Frank Gatski	C	6-2	240	18MAR22	Marshall/Auburn
	Al Gerlick	OG	5-9	215	39	Syracuse
	George Gilchrist	T	6-1	275	19JAN28	Tennessee State
	Bob Gilmore	C		212		Heidelberg
	Geno Gioia	E	5-11	187	35	Kent State
45	Jerry Green	FL	6-0	190	16APR36	Georgia Tech
14	Tom Greene	QB	6-1	190	38	Holy Cross
82	John Gremer	T	6-1	230	36	Illinois
	Joe Guido	DB	5-11	190		Youngstown
	Frank Hall	QB	6-0	185	23SEP35	Southern Cal
67	Art Hauser	DT	6-0	243	19JUN29	Xavier (Ohio)
	Chuck Hawley	DB	5-11	200		George Washington
	Willie Hayes	HB	5-8	165	38	No. Carolina Central
84	Velles Heckman	DE	6-0	230	37	Florida
	Jim Hinton	DT	6-2	240	37	Shaw (NC)
78	Gordy Holz	DT	6-4	270	24MAY33	Minnesota
	Bob Horan	HB	5-11	192	39	Connecticut
79	Jim Lee Hunt	DT	5-11	245	5OCT38	Prairie View A&M
83	Harry Jacobs	DE	6-2	235	4FEB37	Bradley
73	Harry Jagielski	DT	6-0	260	25DEC31	Indiana
20	Lane Jenkins			188	37	Southern Illinois

\* - later additions

# 1960 BOSTON PATRIOTS TRAINING CAMP ROSTER (UMass-Amherst)

No	Player	Pos	Hgt	Wgt	Birthdate	College
24	Joe Johnson *	OE	6-0	185	3NOV29	Boston College
	Richie Kagan	E				Williams
86	Roger Kranz	FB	6-4	226	10FEB38	New Mexico
34	Bill Larson	FB	5-10	190	39	Illinois Wesleyan
	Phil Lavoie	FB	6-0	205	37	South Carolina
60	Bob Lee	OT	6-1	245	4JUL35	Missouri
63	Charley Leo	OG	6-0	233	29AUG34	Indiana
24	Walt Livingston	OHB	6-0	185	12SEP34	Heidelberg
86	Oscar Lofton	OE	6-6	218	2APR38	S.E. Louisiana
	Jim Long	HB		210		W. Virginia State
87	Mike Long	FL	6-0	188	29OCT38	Brandeis
	Bob Lowden	G				Williams
	Bob Lyons	C				Northeastern
	Cliff Manning	T-G				Hardin-Simmons
	Ray Masneri	E	6-2	210	15AUG37	Clemson
	Durel Matherne	QB				Louisiana State
77	Walt Mazur	OT	6-1	245	23JAN34	Penn State
85	Don McComb	DE	6-4	240	24MAR34	Villanova
	Jerry McFarland	DT	6-0	245	34	Michigan State
75	George McGee	OT	6-2	255	7OCT35	Southern (LA)
	Bob McNamara	HB	6-0	188	12AUG31	Minnesota
	Bill Meade	E	6-4	218	19OCT34	Georgia/Bridgeport
	Bob Mears	QB				Western St. (Colorado)
32	Alan Miller	FB	6-0	219	19JUN37	Boston College
	Bob Montgomery	DE	6-0	200		Lincoln (PA)
88	Don Norwood	OE	6-3	216	39	Louisiana State
25	Ross O'Hanley	S	6-0	185	16FEB39	Boston College
50	Vince Palyan	HB	6-0	205		Dayton
63	Emiddio Petrarca	LB	6-3	190	36	Boston College
46	Leroy Phelps	S	5-11	187	35	Oregon
	Pete Piccirillo	T	6-1	240	37	Indiana
	Ed Pitts	T	6-1	230	38	South Carolina
	Les Plumb	QB				Springfield
	Bob Rathi	E	6-0	210	40	Pittsburgh
	Jim Redinger	FB	6-1	210	38	Purdue

\* - later additions



1960 BOSTON PATRIOTS TRAINING CAMP ROSTER (UMass-Amherst)

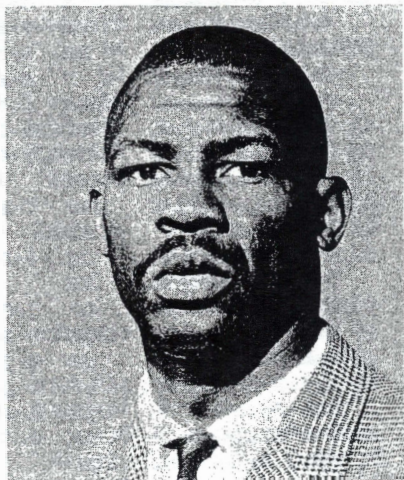
No	Player	Pos	Hgt	Wgt	Birthdate	College
79	Al Richardson	DE	6-3	250	1FEB35	Grambling
84	Bill Robinson	E	6-1	210	29SEP29	Lincoln(MO)
	Carl Robinson	DE	6-5	255	37	South Carolina St.
80	Jack Rudolph	LB	6-3	220	21MAR38	Georgia Tech
	John Sanders	T	6-4	306		Tennessee State
	Rick Sapienza	OHB	6-0	190	8FEB36	Villanova
64	Tony Sardisco	LB	6-3	225	5DEC32	Tulane
66	Bill Schmitt	OG	6-0	250	34	Pittsburgh
23	Tom Schwalbach	HB				Northern Michigan
31	Ger Schwedes	OHB	6-1	205	23APR38	Syracuse
41	Don Scott	HB				Bridgeport
40	Chuck Shonta	CB	6-0	190	29AUG37	Eastern Michigan
	Daniel Smith	FB				Mexico City
70	Hal Smith	DT	6-5	250	30CT35	U.C.L.A.
10	Dick Soergel	QB	6-3	210	38	Oklahoma State
42	Bob Soltis	DB	6-2	205	1APR36	Minnesota
11	Butch Songin	QB	6-2	205	11MAY24	Boston College
	Bob Spoo	QB	5-11	175	37	Purdue
45	Tom Stephens *	HB	6-1	190	29AUG35	Syracuse
81	John Stillwell	OE		195	36	Northwestern
72	Bill Streigel	LB	6-2	235	28MAY36	Coll. of Pacific
	Bill Thomas	C	6-0	225	35	Clemson
21	John Thomas	OHB	5-10	185	38	Southern(LA)
21	Amos Thornton			174		No. Carolina Central
	Bennie Ray Tyler	C				Tulane
82	Tom Vernon	E	6-2	210	38	Michigan State
31	Clyde Washington*	DB	6-0	195	21MAR38	Purdue
87	Cleve Webster		6-2	210		Auburn
41	Billy Wells	OHB	5-10	175	7DEC31	Michigan State
51	Tom Welsch	C				Marquette
	Eustace Wesley	T	6-4	240		Florida
12	Harvey White	QB	6-2	190	3MAR38	Clemson
	Buck Wiley	LB	6-1	215		Georgia Tech
	Frank Wydo	DE	6-4	225	15JUN24	Duquesne/Cornell
61	Bob Yates	OG	6-1	230	20NOV38	Syracuse
32	Dick Young				34	Tenn-Chattanooga

\* - later additions

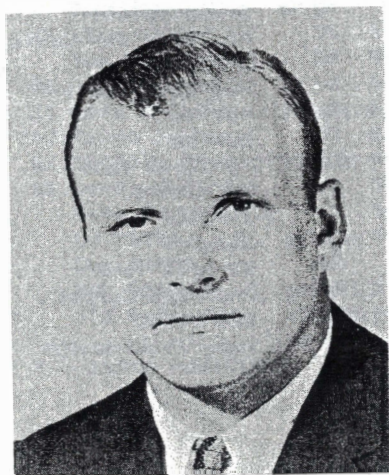
# BOSTON



**TOMMY ADDISON**



**WALTER BEACH**



**BILL BROWN**



**FRED BRUNEY**



# PATRIOTS



RON BURTON



GINO CAPPELLETTI



DICK CHRISTY



ABE COHEN

# BOSTON



JIM COLCLOUGH



JIM CRAWFORD



WALT CUDZIK



JACK DAVIS



# PATRIOTS



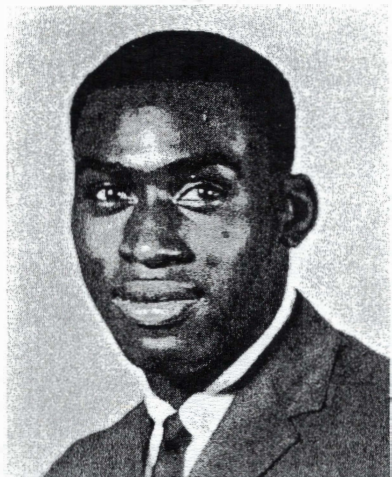
BOB DEE



GERRY DeLUCCA



TONY DISCENZO

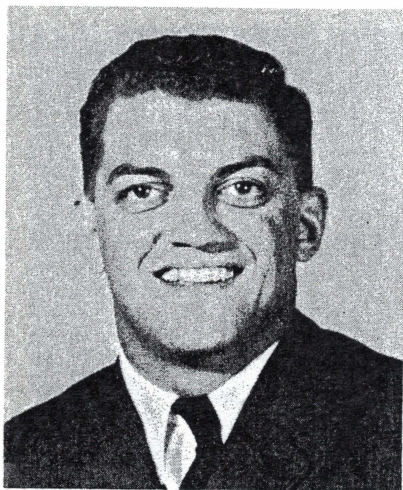


LARRY GARRON

# BOSTON



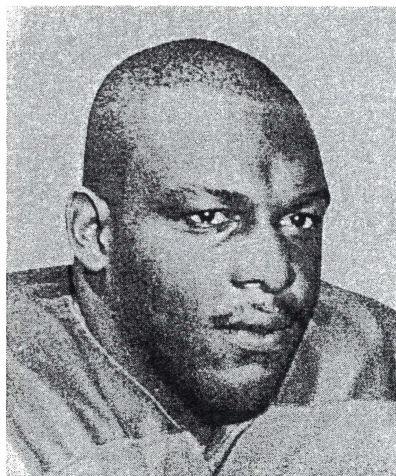
**FRANK GATSKI**



**JEROME GREEN**



**TOM GREENE**



**JIM HUNT**



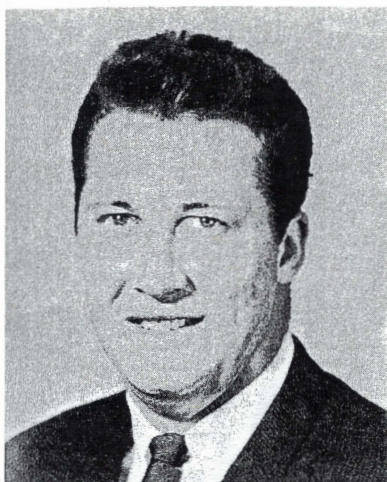
# PATRIOTS



**HAROLD JACOBS**



**HARRY JAGIELSKI**

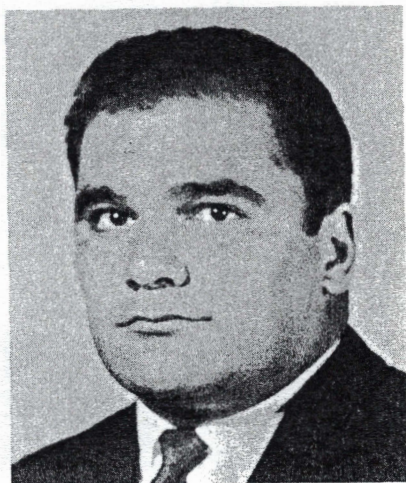


**DON NORWOOD**

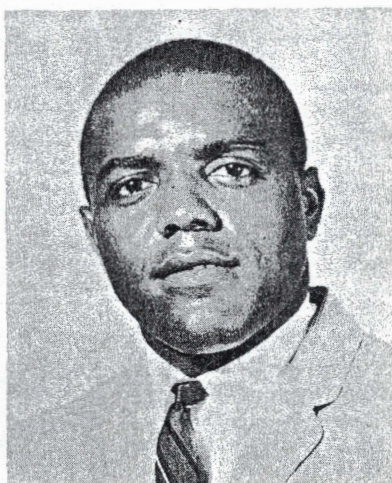


**BOB LEE**

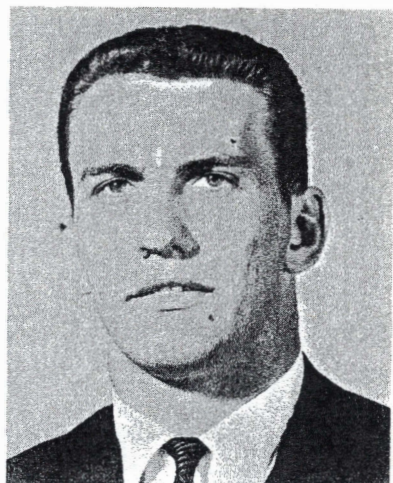
# BOSTON



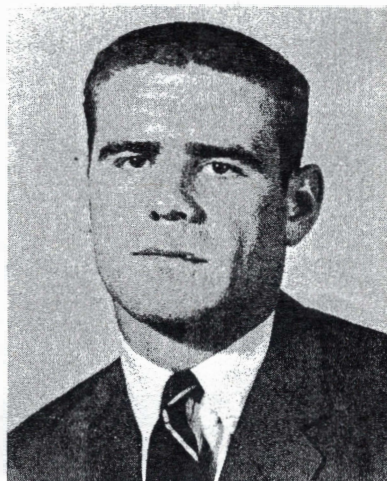
CHARLES LEO



WALTER LIVINGSTON



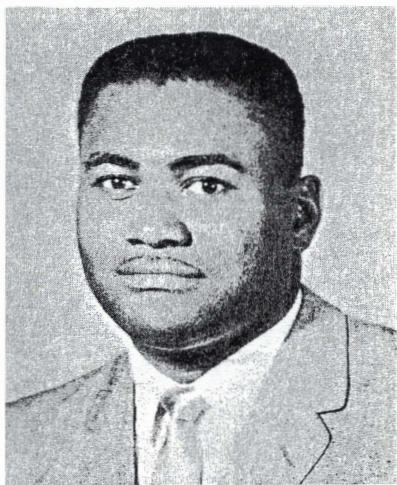
OSCAR LOFTON



MIKE LONG



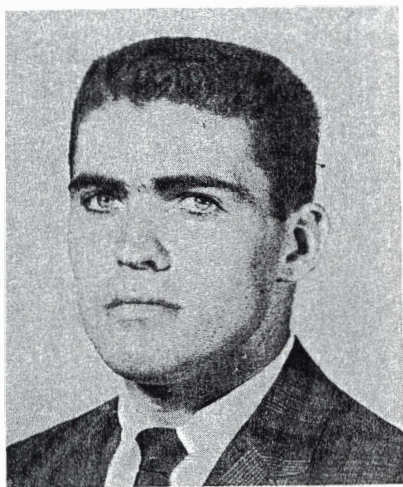
# PATRIOTS



**GEORGE McGEE**



**ALAN MILLER**



**ROSS O'HANLEY**



**JOHN RUDOLPH**



# BOSTON



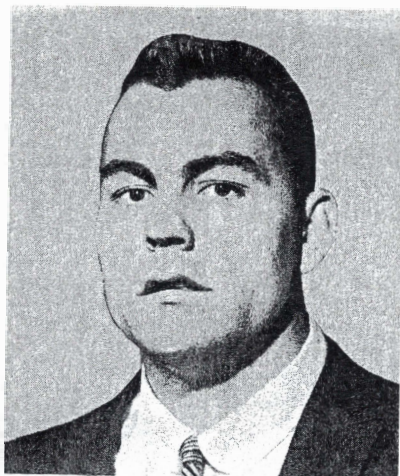
**TONY SARDISCO**



**GER SCHWEDES**



**CHUCK SHONTA**

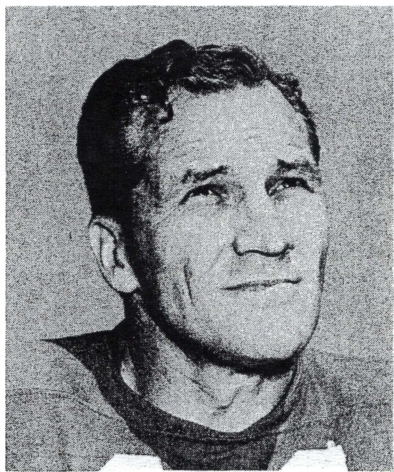


**HAL SMITH**

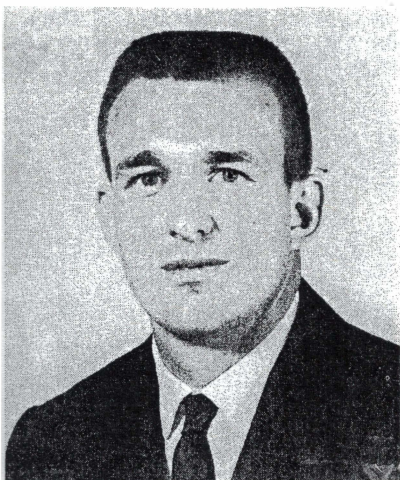
# PATRIOTS



**BOB SOLTIS**



**BUTCH SONGIN**



**TOM STEPHENS**



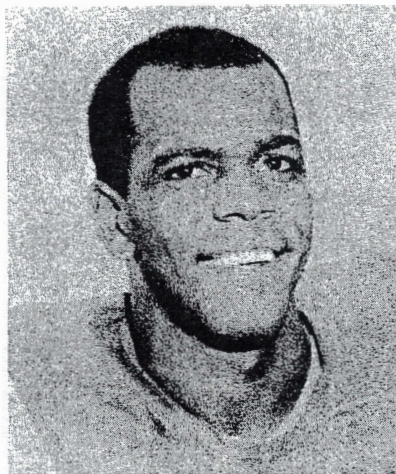
**BILL SCHMITT**



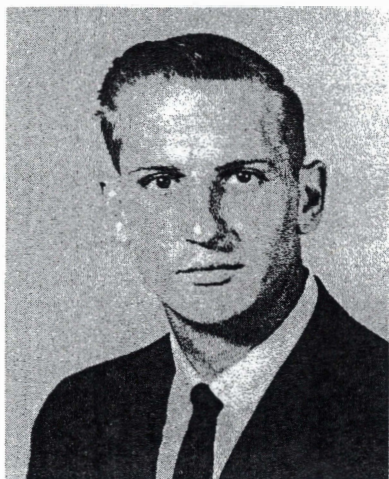
# BOSTON



**BILLY WELLS**



**CLYDE WASHINGTON**



**HARVEY WHITE**



**JOE JOHNSON**



**ART HAUSER**  
Tackle, Xavier



**BOB YATES**

### PATRIOTS ON OFFENSE

LT	LG	C	RG	RT
76 Discenzo	65 Davis	56 Cudzik	63 Leo	75 McGee
60 Lee	66 Schmitt *	52 Gatski	62 Cohen	77 Mazur
			61 Yates	
LE	QB			RE
81 Colclough	14 Greene			86 Lofton
87 Long	11 Songin			42 Soltis
	10 Soergel			
	12 White			
HB	FB			FLANKERS
22 Burton	30 Crawford			46 Gannon
21 Thomas	32 Miller			45 Green, J.
24 Livingston	31 Schwedes			23 Stephens
	34 Lamon			

### PATRIOTS ON DEFENSE

LE	LT	RT	RE
89 Dee	71 Crow	73 Jagielski	79 Richardson
70 Bonner	72 Holz	72 Holz	83 Robinson
			67 Wester
L-LB	M-LB		R-LB
54 Brown	64 Sardisco		80 Rudolph
50 Palyan	53 Fazio		82 Norwood
LHB	L-SAFETY	R-SAFETY	R-HB
25 O'Hanley	20 Cappelletti	33 Bruney	40 Shonta
35 Altieri	41 Doyle		42 Soltis

# Boston Patriots' Marching

## - Song - by Lee and Jay Morris

Handwritten musical score for a marching song. The score is written on ten staves, each with a treble clef and a key signature of one flat (B-flat). The time signature is 6/8. The lyrics are written below the notes, with some words underlined. Chord symbols (F, C7, F7, Bb, D7, Gm) are written above certain notes. The music features a mix of eighth and quarter notes, with some measures containing rests. The lyrics are: FIGHT FIGHT FIGHT FOR THE PA-TRI-OTS, FOR THAT'S THE GOOD OLD BOS-TON WAY, FIGHT FIGHT FIGHT FOR THE PA-TRI-OTS AND SWEEP THE OTH-ER TEAM A-WAY, WIN WIN WIN FOR THE PA-TRI-OTS UN-TIL WE REACH THE TOP AND THEN WE'LL HAVE OURSELVES A DREAM, A PEN-NANT WINNING TEAM~ AND MAKE NEW ENGLAND PROUD A-GAIN!

FIGHT FIGHT FIGHT FOR THE PA-TRI-OTS  
FOR THAT'S THE GOOD OLD BOS-TON  
WAY FIGHT FIGHT FIGHT FOR THE  
PA-TRI-OTS AND SWEEP THE OTH-ER  
TEAM A-WAY WIN WIN WIN FOR THE  
PA-TRI-OTS UN-TIL WE REACH THE TOP AND  
THEN WE'LL HAVE OURSELVES A DREAM, A  
PEN-NANT WINNING TEAM~ AND MAKE NEW ENGLAND  
PROUD A-GAIN!



## AFL GAME OFFICIALS

<b>Crew</b>	<b>Official</b>	<b>Position</b>	<b>No.</b>
<b>A</b>	John McDonough	Referee	11
	Elvin Hutchinson	Linesman	32
	Clyde Devine	Umpire	20
	Willard (Lefty) Goodhue	Back Judge	44
	Charles Liley, Jr.	Field Judge	52
<b>B</b>	John Morrow	Referee	16
	Joe Kraus	Linesman	34
	Walt Parker	Umpire	25
	Amby Schindler	Back Judge	43
	Price Truitt	Field Judge	54
<b>C</b>	Harold (Red) Bourne	Referee	12
	Bo McAlister	Linesman	35
	Bob Finley	Umpire	22
	George Parker	Back Judge	40
	Ben Dreith	Field Judge	53
<b>D</b>	Jack McLain	Referee	14
	Al Sabato	Linesman	30
	Gilbert Castree	Umpire	24
	John Reader	Back Judge	42
	Fritz Graf	Field Judge	55
<b>E</b>	John Barnhill	Referee	15
	Dick Ullrich	Linesman	36
	George Young	Umpire	23
	Sonny Gamber	Back Judge	33
	James Ryan	Field Judge	50

# LEAGUE DIRECTORY

## LEAGUE HEADQUARTERS

Address: 1111 Southland Center, Dallas 1, Texas.  
Telephone: Riverside 8-0301.  
President: Lamar Hunt.  
Commissioner: Joe Foss.  
Assistant Commissioner: Milt Woodard.  
Assistant to the Commissioner: Thurlo E. McCrady.  
Supervisor of Officials: Bob Austin.  
Legal Staff: Bob Dedman, Sullivan Barnes.  
Publicity Director: Al Ward.

## BOSTON PATRIOTS

Address: 520 Commonwealth Avenue, Boston 15.  
Telephone: COngress 2-1776.  
President: William H. Sullivan (65 State Street, Boston 9).  
Head Coach: Lou Saban.  
General Manager: Ed McKeever.  
Publicity Director: Gerry Moore.

## BUFFALO BILLS

Address: Statler Hilton Hotel, Buffalo 5.  
Telephone: MOhawk 1567.  
President: Ralph C. Wilson, Jr. (1550 Guardian Bldg., Detroit 26).  
Head Coach: Garrard (Buster) Ramsey.  
General Manager: Dick Gallagher.  
Publicity Director: Chuck Burr.

## DALLAS TEXANS

Address: Arcade — Mercantile Securities Bldg., Dallas 1.  
Telephone: Riverside 8-7031.  
President: Lamar Hunt (700 Mercantile Securities Bldg.,  
Riverside 1-3561).  
Head Coach: Hank Stram.  
General Manager: Don Rossi.  
Publicity Director: Bob Halford.

## **DENVER BRONCOS**

Address: 2828 West 17th Avenue, Denver 4.  
Telephone: ALpine 5-6262.  
President: Bob Howsam.  
Head Coach: Frank Filchok.  
General Manager: Dean Griffing.  
Publicity Director: Lee Fisher.

## **HOUSTON OILERS**

Address: 2703 Cullen Blvd., P. O. Box 1516, Houston 1.  
Telephone: CApital 7-5261.  
President: K. S. (Bud) Adams, Jr. (P. O. Box 844, JACkson 6-1911).  
Head Coach: Lou Rymkus.  
Assistant to President: Don Suman.  
Publicity Director: Jack Scott.

## **LOS ANGELES CHARGERS**

Address: 1017 S. La Brea Avenue, Los Angeles 19.  
Telephone: WEbster 8-2481.  
President: Barron Hilton (8544 Sunset Blvd., Olym pia 7-2400).  
Head Coach: Sid Gillman.  
General Manager: Sid Gillman.  
Publicity Director: Don Richman.

## **NEW YORK TITANS**

Address: 277 Park Avenue, New York 17.  
Telephone: PLaza 2-1420.  
President: Harry Wismer (277 Park Avenue, PLaza 5-7600).  
Head Coach: Sam Baugh.  
General Manager: Steve Sebo.  
Publicity Director: Art Susskind, Jr.

## **OAKLAND RAIDERS**

Address: 1432 Franklin St., Oakland 12.  
Telephone: TEmp lebar 4-2173.  
President: Y. C. (Chet) Soda.  
Head Coach: Eddie Erdelatz.  
General Manager: Chet Soda.  
Assistant General Manager: Bud Hastings.  
Publicity Director: Gene Perry.

## THE TELEVISION PROGRAM

It was natural that professional football, the nation's fastest-growing spectator sport, and ABC, the nation's fastest-growing network, would unite for the 1960 season.

Through the efforts of Jay Michaels of MCA, Harry Wismer of the AFL Television Committee, and Commissioner Foss, the League signed a five-year television contract with ABC for a sum in excess of \$10 million.

Thirty-two AFL games will be aired on ABC this season. Thirty of these will be telecast on 15 Sunday playing dates, one game being fed to the Eastern half of the country, another to the Western half. In addition, the Dallas-New York Thanksgiving Day game and the championship playoff game will be telecast. In addition, several regional telecasts are scheduled.

The schedule (E denotes game will be shown in Eastern U. S.; W denotes Western game):

DATE	GAME	START	BLACKOUTS	TIME ZONES CARRYING
W-Sept. 11	Houston at Oakland	1:30 PDT	Oakland	CST-MST-PDT-PST
E-Sept. 11	Buffalo at N. Y.	2:00 EDT	New York	EDT-EST-CDT
W-Sept. 18	L. A. at Houston	2:30 CST	Houston	PDT-CST-MST-PST
E-Sept. 18	Denver at Buffalo	2:00 EDT	Buffalo	EDT-EST-CDT
	(Denver-Buffalo game also sent to Denver, 11:00 MST)			
W-Sept. 25	L. A. at Dallas	2:30 CST	Dallas	CST-MST-PDT-PST
E-Sept. 25	Oakland at Houston	1:30 CST	Houston	EDT-EST-CDT
	(Oakland-Houston game also sent to Oakland, 12:30 PDT)			
W-Oct. 2	L. A. at Buffalo	2:00 EDT	Dallas, Denver	CDT-CST-MST-PTT
E-Oct. 2	N. Y. at Dallas	1:30 CST	Buffalo	EDT-EST
	(Oakland-Denver game also sent to Oakland only, 12:30 PST)			
W-Oct. 9	Oakland at Dallas	2:30 CST	Houston, Dallas	CST-MST-PST
E-Oct. 9	N. Y. at Houston	1:30 CST		EDT-EST-CDT

W-Oct. 16	Dallas at Houston	2:30 CST	Houston, Denver, S. F.	CST-MST-PST
E-Oct. 16	N. Y. at Buffalo	2:30 EDT	Buffalo	EDT-EST-CDT
W-Oct. 23	Boston at Denver	1:30 MST	Denver	CST-MST-PST
	(Boston-Denver game also sent back to Boston, 4:30 EDT)			
E-Oct. 23	Houston at N. Y.	2:30 EDT	New York, Buffalo	EDT-EST-CDT
	(Houston-New York game also sent back to Houston, 12:30 CST)			
W-Oct. 30	Houston at Buffalo	2:00 EST	Denver	CST-MST-PST
E-Oct. 30	Dallas at Denver	1:30 MST	Buffalo	EST
	(Dallas-Denver game also sent back to Dallas, 2:30 CST)			
W-Nov. 6	Dallas at Buffalo	2:00 EST	Denver	CST-MST-PST
E-Nov. 6	Houston at Denver	1:30 MST	Buffalo	EST
	(Houston-Denver game also sent back to Houston, 2:30 CST)			
W-Nov. 13	Denver at Dallas	2:30 CST	Dallas, S. F., L. A.	CST-MST-PST
E-Nov. 13	Buffalo at Oakland	1:00 PST		EST
W-Nov. 20	Denver at Houston	2:30 CST	Houston, L. A.	CST-MST-PST
E-Nov. 20	Buffalo at L. A.	1:00 PST		EST
*Nov. 24	Dallas at New York	11:00 EST	New York	EST-CST
	(Tape of game to be fed to MST zone, 3:30, and PST zone, 2:30)			
W-Nov. 27	Oakland at L. A.	2:00 PST	Los Angeles	PST
E-Nov. 27	Buffalo at Denver	1:30 MST	Denver	MST-CST-EST
Dec. 4	Houston at Dallas	2:30 CST	Dallas, Denver	CST-MST
Dec. 4	L. A. at Oakland	1:30 PST	San Francisco	PST
E-Dec. 4	New York at Denver	1:30 MST	Buffalo	EST
	(Boston at Buffalo game sent back to Boston only, 2:00 EST)			
Dec. 10	(Denver at Los Angeles game sent back to Denver only, 2:00 MST)			
W-Dec. 11	Buffalo at Houston	2:30 CST	Houston, Dallas, S. F.	CST-MST-PST
	(Buffalo-Houston game also sent back to Buffalo, 3:30 EST)			
E-Dec. 11	New York at Oakland	1:00 PST		
	(Boston at Dallas game sent back to Boston only, 3:30 EST)			
W-Dec. 18	Boston at Houston	2:30 CST	Houston, Dallas	CST-MST
	(Boston-Houston game also sent back to Boston, 3:30 EST)			
E-Dec. 18	New York at L. A.	1:00 PST	Los Angeles	EST-PST

\*Thanksgiving Day Game on all time zones.

NOTE: TV schedule subject to late adjustments.

# **BOSTON PATRIOTS**

## **1960 HOME GAMES SCHEDULE**

All games played Friday nights at 8 p.m. at  
Boston University Field  
(Formerly Braves Field)

September 9 .....Denver  
September 23 .....Buffalo  
October 28 .....Los Angeles  
November 4 .....Oakland  
November 11 .....New York  
November 18 .....Dallas  
November 25 .....Houston

★ ★ ★

Box Seats .....\$6.00

Reserved Side Line Seats .....\$5.00





## BOSTON ORGANIZATION

The team is owned by ten New England business men including:

**John Ames, Jr.**

*President, North Easton Savings Bank*

**Dean Boylan**

*President, Boston Sand & Gravel Co.*

**Dominic DiMaggio**

*President, American Latex Corporation*

**Daniel F. Marr**

*President, Marr Scaffolding Company*

**Edward McMann**

*President, Northeastern Packing Company*

**George L. Sargent**

*Obrion, Russell & Company*

**Paul Sonnabend**

*Vice-President, Hotel Corp. of America*

**Joseph E. Sullivan**

*Treasurer, Sullivan Brothers Printers*

**William H. Sullivan, Jr.**

*President, Metropolitan Coal & Oil Co.*

**L. Edgar Turner**

*President, Seven-up Distributors Corp.*

Bill Sullivan, President of the Boston Patriots heads an organization with offices located at 520 Commonwealth Avenue at Kenmore Square in Boston. Included on the staff are General Manager, Ed McKeever—Head Coach, Lou Saban—Chief Scout, Mike Holovak—Assistant Coaches, Bob Miller, Joe Collier and Jerry Smith.

Director of Public Relations—Gerry Moore

Ticket Manager—John Fitzgerald

Asst. Director of Public Relations—John Grinold





# BOSTON PATRIOTS



## 1960 PATRIOTS SCHEDULE

### Pre-Season Exhibitions

- Sat. July 30 — at Buffalo (night)
- Sun. Aug. 7 — vs Denver
- Sun. Aug. 14 — vs Dallas Texans
- Sun. Aug. 21 — vs Buffalo at Worcester, Mass.
- Sun. Sept. 4 — vs Oakland

### League Schedule

- Fri. Sept. 9 — vs Denver Broncos (night)
- Fri. Sept. 16 — at New York (night)
- Fri. Sept. 23 — vs Buffalo Bills (night)
- Sat. Oct. 8 — at Los Angeles (night)
- Sun. Oct. 16 — at Oakland
- Sun. Oct. 23 — at Denver
- Fri. Oct. 28 — vs Los Angeles Chargers (night)
- Fri. Nov. 4 — vs Oakland Raiders (night)
- Fri. Nov. 11 — vs New York Titans (night)
- Fri. Nov. 18 — vs Dallas Texans (night)
- Fri. Nov. 25 — vs Houston Oilers (night)
- Sun. Dec. 4 — at Buffalo
- Sun. Dec. 11 — at Dallas
- Sun. Dec. 18 — at Houston