

SAINTS
GO
MARCHING
IN

NEW
ORLEANS
SAINTS

1967

INFORMATION
GUIDE





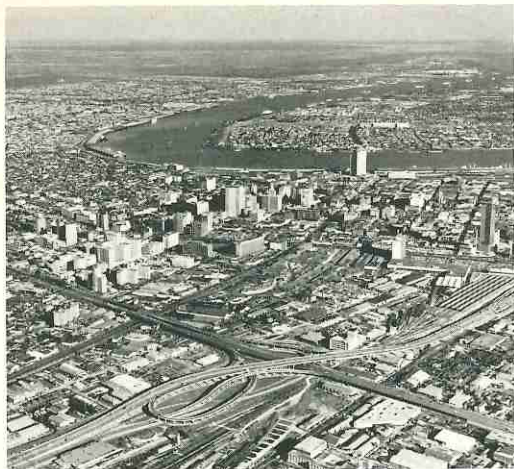
In New Orleans, or on the road, football with a flair is "football Saints-style." And as you follow the Saints this season, stop by the sign of "Happy Motoring"® for smoother going. That's where the Tiger Team makes the big play — everyday.

HUMBLE Oil & Refining Company . . .
The People Who "Put a Tiger in Your Tank"®

THE NEW ORLEANS SAINTS, 1967 INFORMATION GUIDE

TABLE OF CONTENTS

NEW ORLEANS, THE CITY	2-3
Club Directory	4
1967 Schedule, Pre-Season and Regular Season	5
Tulane Stadium, 1967 Home of the Saints	6
Ticket Information	7
John W. Mecom, Jr., President	8
Bert E. Rose, Jr., Executive Vice President and General Manager	9
Administrative Staff	10
Head Coach Tom Fears	11
Assistant Coaches' Biographies	12-14
Trainers and Equipment Men	15
Saints Mascot, Halftime Programs, Cheerleaders	16
THE NEW ORLEANS SAINTS, 1967	
The Saints Roster	18-19
Expansion Pool — How the Saints Drafted	20
Veterans' Roster, 1967	21
Veterans' Biographies	22-47
1967 Rookie Draft List	48
Rookies' Roster, 1967	49
Rookies' Biographies	50-62
1967 Saints Training Camp	62
THE NATIONAL FOOTBALL LEAGUE	
NFL Directory, 1966 Standings, Super Bowl	64
NFL Championship History	65
Pro Bowl, Playoff Bowl, All-Star Game History	66
NFL Attendance Story, NFL No. 1 Draft Choices	67
Individual League Statistical Leaders by Years	68-71
1966 Individual League Statistical Leaders	72-73
1966 All-NFL Selections	74
1967 NFL Schedule	75-76
NFL Public Relations Directors Guide	77
THE CAPITOL DIVISION OPPONENTS OF THE SAINTS	
Dallas, Philadelphia, Washington	78-80
THE CENTURY DIVISION OPPONENTS OF THE SAINTS	
Cleveland, New York, Pittsburgh, St. Louis	81-84
THE COASTAL DIVISION OPPONENTS OF THE SAINTS	
Atlanta, Baltimore, Los Angeles, San Francisco	85-88
THE CENTRAL DIVISION MEMBERS OF THE N.F.L.	
Chicago, Detroit, Green Bay, Minnesota	89-92
Saints on Television and Radio	93
Working Press Information	94
They Cover the Saints (Media Listing)	95
Saints Itinerary, Hotels on the Road	96



THE N.F.L.'S 16TH CITY

—
New Orleans,
Louisiana

When the National Football League concluded its search for a 16th city to enter professional football's coast-to-coast and border-to-border super league, New Orleans, Louisiana, was the winner! And the NFL couldn't have selected a more historic, more colorful, more unique and, for that matter, a city more ripe for professional football.

"The City that Care Forgot" is perhaps best known for its fabulous Mardi Gras celebration every February. But as historic and fun-loving as New Orleans is as a city, it is also one of the bustling metropolitan centers of the United States, an area with more than one million population with an economy that plays a vital role in the fortunes of a vast area of the south and central part of the nation.

In the enthusiasm over the unique—the Mardi Gras, the French Quarter with its perpetual carnival spirit, the moonlight rides on Lake Pontchartrain and the meandering Mississippi River—the casual newcomer may not realize he is also visiting the nation's second largest seaport—51.4 miles of docks front on the Mississippi and another 11 miles on the Inner Harbor Navigational Canal. The port serves an area covering 55 percent of the continental United States and 40 percent of its population.

The city itself is situated geographically quite unlike any other city in the world. Squeezed between the Mississippi River, numerous bayous and the solid shores of Lake Pontchartrain, the Crescent City's

elevation varies only a few feet, from just below sea level to just a few feet above sea level. The only break in the table-flat landscape is the occasional rise that marks a levee of the river, the lake or one of the numerous canals that literally keep the area's million-plus residents sleeping safely each night low and dry, as opposed to the proverbial high and dry situation.

In spite of the city's 63-inch annual rainfall, New Orleans has a delightful sun-dominated climate. Rarely does the temperature rise above 95 degrees in summertime and a snowfall—one did hit just before the Sugar Bowl game in 1966—is about as rare as a sunstroke in Antarctica.

The New Orleans area is a manufacturing and industrial center of the first magnitude with a wide diversity of pursuits in its economy. New Orleans and the state of Louisiana are rich in natural resources. Ranked nationally, Louisiana is second in natural gas, second in petroleum, second in sulphur, first in salt and very high in such other products and industries as alcohol, sugar cane, clay suitable for brick and tile, cotton, gravel, rice, limeshell, sand, seafood and timber.

New Orleans was founded by Bienville in 1718 as a French colony. It became a French crown colony in 1731, was given to King Charles III of Spain secretly by his cousin, Louis XV, in 1762, was under Spanish rule from 1766 to 1803, when it was transferred back to France and then, in the same year, sold to the United States for \$15,000,000 in the famous Louisiana Purchase deal. The purchase covered an area that now comprises all or part of 17 states.

The Battle of New Orleans fought in January, 1815, was one of the decisive battles of the War of 1812. And New Orleans was captured early in the conflict by Union forces during the Civil War, mute testimony to the geographically strategic location of the Crescent City to a vast part of the North American continent.

Being able to recall these signs of the past in the landmarks of the present is one reason for the charm of New Orleans. For while New Orleans has grown and modernized, it has also preserved. Comparatively little that occurred during the historical past is not now in some way carried on to the present day.

There won't be another city like New Orleans in professional football—something that can be said with a great deal of pride by the city's exuberant football fans. It's a combination that should produce two big winners—the city with its new NFL membership and the NFL with its newest member—New Orleans!

NEW ORLEANS SAINTS, 1967

CLUB DIRECTORY

BOARD OF DIRECTORS

President John W. Mecom Jr.
 Chairman of the Board Edward B. Poitevent
 Secretary-Treasurer Robert M. Monsted

ADMINISTRATIVE STAFF

Executive Vice-President
 and General Manager Bert E. Rose, Jr.
 Director of Public Relations Donald R. Smith
 Public Relations Assistant Miss Pat Cross
 Director of Player Personnel Vic Schwenk
 Director of Promotions
 and Special Events William J. Smyth
 Ticket Manager Henry Simoneaux
 Comptroller Cyril Nelson

COACHING STAFF

Head Coach Tom Fears
 Chief Offensive Coach George Dickson
 Offensive Line Coach Walt Yowarsky
 Receiver Coach Bob Shaw
 Chief Defensive Coach Jack Faulkner
 Defensive Line Coach Ed Khayat
 Trainers Fred Peterson, Bobby Yarborough
 Equipment Managers Charlie Shepherd, Wallace Brown

MISCELLANEOUS

Stadium Tulane Stadium (Sugar Bowl)
 Stadium Capacity 80,985
 Saints Administrative Office (Temporary) 615 Howard Ave.
 Saints Administrative Office (Permanent) 944 St. Charles Ave.
 New Orleans, La. 70130
 Telephone (Area Code 504) 524-1421
 Team Colors Old Gold, Black and White
 Uniform Jersey Colors • HOME: White with Black and Gold Trim
 ROAD: Black with White and Gold Trim

1967 SAINTS SCHEDULE

PRE-SEASON

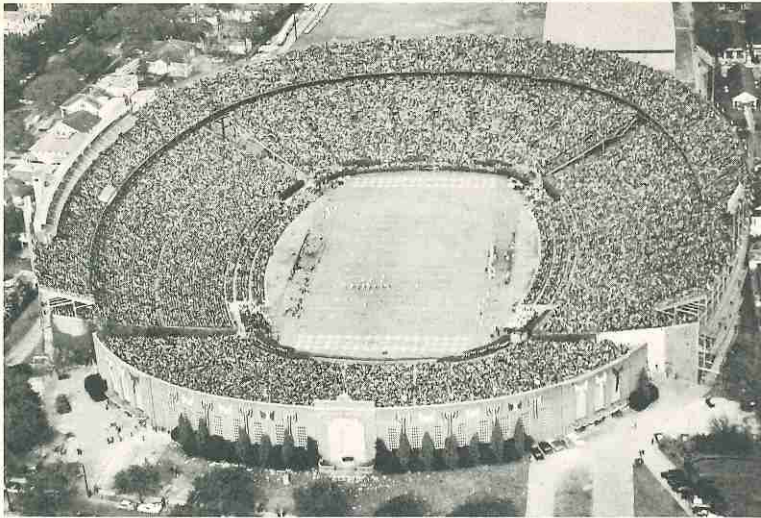
Date	Game and Site	Time*
Aug. 2	Los Angeles Rams at Anaheim, Calif.	8:00 p.m.
Aug. 12	St. Louis Cardinals at Shreveport, La.	8:00 p.m.
Aug. 19	Pittsburgh Steelers at Baton Rouge, La.	8:00 p.m.
Aug. 26	San Francisco 49ers at Portland, Ore.	8:30 p.m.
Sept. 2	Miami Dolphins at Charleston, S. C.	8:00 p.m.
Sept. 9	ATLANTA FALCONS AT TULANE STADIUM	8:00 p.m.

REGULAR SEASON

Sept. 17	LOS ANGELES RAMS AT TULANE STADIUM	1:30 p.m.
Sept. 24	WASHINGTON REDSKINS AT TULANE STADIUM	1:30 p.m.
Oct. 1	CLEVELAND BROWNS AT TULANE STADIUM	1:30 p.m.
Oct. 8	New York Giants at Yankee Stadium	1:30 p.m.
Oct. 15	Dallas Cowboys at Cotton Bowl	1:30 p.m.
Oct. 22	San Francisco 49ers at Kezar Stadium	1:00 p.m.
Oct. 29	PITTSBURGH STEELERS AT TULANE STADIUM	1:30 p.m.
Nov. 5	PHILADELPHIA EAGLES AT TULANE STADIUM	1:05 p.m.
Nov. 12	DALLAS COWBOYS AT TULANE STADIUM	1:05 p.m.
Nov. 19	Philadelphia Eagles at Franklin Field	1:15 p.m.
Nov. 26	ATLANTA FALCONS AT TULANE STADIUM	1:05 p.m.
Dec. 3	St. Louis Cardinals at Busch Memorial Stadium	1:00 p.m.
Dec. 10	Baltimore Colts at Memorial Stadium	2:00 p.m.
Dec. 17	Washington Redskins at District of Columbia Stadium	1:15 p.m.

*Times listed are the local times in effect at the site of the game.

HOME GAMES IN CAPS



TULANE STADIUM (Sugar Bowl)

First-Year Home of the Saints

Tulane Stadium, a massive double-decked structure of steel and concrete, will serve as the first home of the Saints, pending the completion of New Orleans' so-called Super-Dome in two or three years. With an official seating capacity of 80,985, it gives the Saints the largest stadium seating capacity in professional football.

Perhaps best known as the site of the famous Sugar Bowl football classic each New Year's Day, Tulane Stadium has been the home of Tulane University's Green Wave football games since October 23, 1926, when the stadium was dedicated with a 35,000-seat capacity.

In the dedication game, Auburn defeated Tulane, 2-0. Since then, the stadium has been the scene of many memorable gridiron battles.

The original stadium was constructed with the financial assistance of New Orleans residents who contributed \$300,000 in a whirlwind, five-day stadium contribution campaign. Enlargements and improvements of the huge stadium have been largely due to the efforts of the New Orleans Mid-Winter Sports Association, sponsor of the annual Sugar Bowl classic.

The first Sugar Bowl game was played January 1, 1935, when Tulane defeated Temple, 20-14. The capacity was upped to 49,000 in 1937 and then to 69,000 in 1939. The massive bowl was enlarged to its present 80,985-seat capacity in 1947.

SAINTS TICKET INFORMATION

SEASON TICKET SALE

The New Orleans Saints made professional football history their very first day of season ticket sales on March 8, 1967, when they sold more than 20,000 season tickets to an obviously football-eager horde of New Orleans, Louisiana and Deep South fans. As of mid-summer, the Saints' first-year season-ticket sale had reached about 34,000, thus ranking the Saints above all AFL teams except New York and about half of the NFL clubs. Late-summer sales may well push the final 1967 season sale near the 40,000 mark.

TICKET PRICES

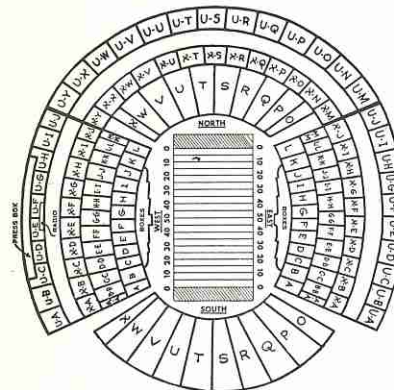
Season*	Box Seats	Single Game
Sold Out	Sold Out	Sold Out
\$48.00	Sideline	\$6.00
\$36.00	Adult End Zone	\$4.50
\$ 8.00	Youth End Zone	\$1.00

(18 and under when accompanied by adult)

*Based on eight-game home season, including final pre-season game.

TICKET OFFICES

The main New Orleans Saints ticket office is located at 944 St. Charles Ave., New Orleans, La. 70130. The telephone number is (504) 523-4174. Henry Simoneaux is the ticket manager.



Mail orders will be accepted when accompanied by a check for the amount of the tickets plus 50 cents for handling and sent to the above address.

In addition, Saints single-game tickets may be purchased at the following New Orleans metropolitan area locations:

- D. H. Holmes 819 Canal Street, Downtown
- D. H. Holmes Lakeside Shopping Center, Metairie
- D. H. Holmes Oakwood Shopping Center, Gretna
- Schwegmann's 2701 Airline Highway, Metairie
- Schwegmann's 5300 Gentilly Road, Gentilly
- Schwegmann's 2222 St. Claude Ave., St. Bernard
- Schwegmann's 3620 Veterans Highway, Metairie
- Schwegmann's 1601 Westbank Expressway, Harvey
- Schwegmann's 300 North Broad, Mid-City
- Schwegmann's 1325 Annunciation, Uptown
- Josef's 634 S. Carrollton, University
- Mason's Motel Americana 2309 S. Claiborne Ave., Uptown

In addition, Saints tickets may be ordered through Southern Airways offices and Western Union offices in most cities in the several-state geographical area surrounding New Orleans.



John, Jr. and wife Katsy proudly display the Saints flag, a gift to the club from the City of New Orleans.

JOHN W. MECOM, JR.

President

The personage of the Saints president and principal stockholder, John W. Mecom, Jr., typifies the entire organization of the NFL's sixteenth entry. He's young (28) but schooled in today's dynamic and competitive sports and business world, enthusiastic, determined, personable, energetic and always a winner!

The Mecom magnetism has penetrated the oil industry, real estate, hotels, automotive sports, ranching, and a most fascinating and unusual list of hobbies and diversions—just to pinpoint a selection of his and the family's interests. But John Mecom, Jr.'s efforts during the past 18 months have been flooded into 1) acquiring the NFL's expansion franchise in New Orleans; and 2) developing and guiding that entry—the Saints—into a competitive, exciting addition to professional football.

Though Mecom is a native Texan, fully 90 per cent of the family's U. S. Oil Company holdings are located in Louisiana. The company's headquarters are located on historic Lee Circle in New Orleans, as are the administrative facilities of the Saints.

After being named by the NFL as the New Orleans Saints major stockholder, Mecom organized an ownership distribution to include more than 20 Louisianians long prominent in sports, civic and business circles.

John W. Mecom, Jr. attended the University of Oklahoma and the University of Texas, and is a member of Sigma Alpha Epsilon. During undergraduate days at Oklahoma, John met his wife, the former Katsy Mullendore of Pawhuska, Okla. They were married in 1962, and have accounted for John W. Mecom III, a bright three-year-old with inquisitive "Mecom blue" eyes, and Katsy, born in late January, 1967—a full month younger than Daddy's Saints.

Outside of football, Mecom's favorite sport is racing. He's an expert speedboat driver, and most auto racing fans are aware of his reputation as the owner of some famed Indianapolis 500 entries. Mecom-owned cars finished first in 1966 and second in 1967 at the Indianapolis classic.

And, there's another sporting fact about the NFL's newest and youngest official—he and his family are attempting to preserve wild game at their ranch. After several trips to Africa and the Mid-East, dismayed at the relentless slaughter of animals, Mecom is slowly immigrating pairs of more than 150 beleaguered species. He recently donated an elephant and three sable antelopes to the New Orleans Zoo.

Sport, spirit, drive, vigor—that's John W. Mecom, Jr. and the New Orleans Saints!



BERT E. ROSE, JR.

Executive Vice President
and
General Manager

Bert E. Rose Jr., the Executive Vice President and General Manager of the New Orleans Saints, has been in professional football in various capacities since 1955, when he became public relations director of the Los Angeles Rams. The general manager of the Rams then was Pete Rozelle, now commissioner of major professional football.

Rose, now 47, was with the Rams from 1955 to 1960 when he became general manager of the National Football League's expansion team in the Twin Cities, the Minnesota Vikings. He drew immediate acclaim by setting up the organization that sold a first-year record 25,000 season tickets and helping to formulate a Viking team that defeated the Chicago Bears in their NFL debut and won three games in their first season.

Rose left the Vikings in June, 1964, returned to the Rams briefly as a special assistant to club president Dan Reeves, and in February, 1965, was appointed a special assistant to NFL commissioner Rozelle in charge of college relations. He resigned from that position in the NFL office to join the Saints.

A native of Seattle, Wash., Rose was graduated from the University of Washington with a B. A. in Journalism. He later served as commander of a subchaser in the Navy during World War II and then joined the public relations department of Boeing Aircraft Co.

He began his career in athletics in 1947 as a sports publicity director for his alma mater, Washington. He became assistant athletic director in 1952 and was in charge of Washington's recruiting program for all sports. He left Washington in 1955 to join the Rams as public relations director, the start of his pro football career.

Bert and his wife, Ellen, have three sons — Brian, Steven and Scott.

BOARD OF DIRECTORS



JOHN W. MECOM, JR.
President



EDWARD B. POITEVENT
Chairman



ROBERT M. MONSTED
Secretary-Treasurer

ADMINISTRATIVE PERSONNEL

(Bert E. Rose, Jr., Executive Vice-President and General Manager. Biography on page 9.)



DONALD R. SMITH
Director of
Public Relations



WILLIAM J. SMYTH
Director of Promotions
and Special Events



PATRICIA L. CROSS
Public Relations
Assistant



HENRY SIMONEAUX
Ticket Manager



CYRIL NELSON
Comptroller



TOM FEARS
Head Coach

New Orleans' new first-year National Football League Saints also have a first-year coach, Tom Fears, who is starting his head coaching career after eight years as an assistant coach at Green Bay, Los Angeles and Atlanta. But the Saints' head mentor has quickly taken command of his forces and, even from the start, he has been running the Saints' show like a veteran.

Fears started his coaching career in 1959 at Green Bay under Vince Lombardi, but he switched to the Los Angeles Rams in 1960 and 1961. Then he was back at Green Bay in 1962 and he remained there through the 1965 season, when he joined the staff of the Atlanta Falcons as chief offensive coach.

More than one NFL star can credit a good part of his success to the work Tom Fears put into helping him become a great player. At Green Bay, it was Boyd Dowler, who was rookie-of-the-year in 1959, and Ron Kramer, an all-pro tight end in 1962 and 1963. At Los Angeles, it was Del Shofner, who won all-pro honors for the first time in 1960, and Red Phillips, an all-pro receiver and pass catching-leader in 1961.

It shouldn't have been surprising that Fears could turn out such outstanding receivers, because as a player, Fears knew few equals. He became the first and only player ever to lead the NFL in receiving in his rookie season and he did it in his first three. He caught 51 passes as a rookie and then broke Don Hutson's then-standing record with 77 catches in 1949. The next year, Fears broke his own record with 84 receptions. He continued playing with the Rams through the 1956 season.

Fears' pre-pro days include two years at Santa Clara in 1941 and 1942, three years in the U. S. Air Force during World War II, and two years at UCLA in 1946 and 1947. Fears, who participated in the Air Force's pilot training program, captained the Second Air Force's famous Superbomber eleven in 1944 and 1945.

Born December 3, 1923, in Los Angeles, Fears and his wife, LuElla, have six children. They are Kathleen 14, Patrick 13, Katie 12, Denny 11, Jono 9 and JoJo 7. In addition the Fears' official family includes "Bay," a Labrador Retriever that Fears acquired, as you might guess, when he was working in Green Bay.



GEORGE DICKSON
Chief Offensive Coach

Head man of the Saints' offensive coaching staff is George Dickson, a veteran of 18 years of coaching and Tom Fears' first choice as an assistant on the Saints' staff.

Dickson, born September 27, 1924, in Boston, played halfback and quarterback behind Johnny Lujack and George Ratterman at Notre Dame, graduating in 1950. Before his college grid days, he had served with the U.S. 101st Airborne Division in the Battle of the Bulge at Bastogne. He was also middleweight boxing champion in the 101st Airborne division and at Notre Dame.

As a coach, Dickson has served as an assistant at Notre Dame, Oklahoma, Southern California and the College of the Pacific as well as some smaller colleges and junior colleges. He served under Frank Leahy at Notre Dame, where he coached Paul Hornung and Ralph Guglielmi. He served under Bud Wilkinson at Oklahoma and, at COP, he coached Dick Bass.

Dickson was an assistant coach with the Oakland Raiders of the American Football League in 1960 and 1961 and then was with the Denver Broncos as a defensive backfield coach in 1964 and 1965. He moved to the Atlanta Falcons as an offensive coach last year and became the Saints' first assistant coach just one day after Fears received his appointment as head coach last January.

Dickson is single.



WALT YOWARSKY
Offensive Line Coach

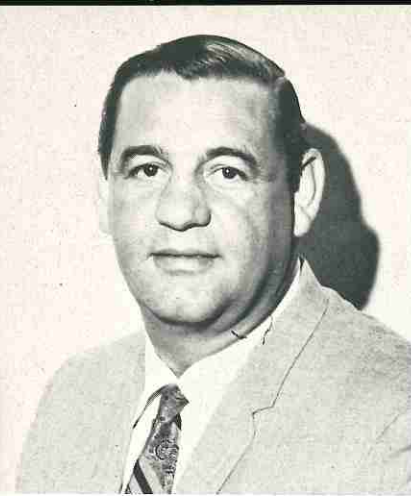
Joining George Dickson on the Saints' offensive coaching staff is Walt Yowarsky, an original member of the Minnesota Vikings' coaching staff who worked six years with the Vikings until Head Coach Norm Van Brocklin resigned last winter. When Yowarsky became available, Fears quickly added him to the Saints' coaching roster.

Yowarsky was an outstanding tackle for the University of Kentucky during his college days and was named the Most Valuable Player in the January, 1951, Sugar Bowl game when the Wildcats upset Oklahoma, 13-7, to end a 33-game Sooner win streak.

Walt was drafted as a second-round choice by the Redskins in 1951 and he played until early in the 1952 season, when he entered the Air Force for two years. He served in West Germany as an air base athletic officer and also coached the line for an Air Force eleven.

He rejoined the Redskins in 1954 and in 1955 he was traded to Detroit as part of a four-player deal. Midway in the 1955 campaign, New York acquired Yowarsky and he played with the Giants until mid-1958, when he went to San Francisco to conclude his playing career. Before starting his coaching stint at Minnesota, Yowarsky served the Giants two years as a scout and assistant coach.

A native of Cleveland, Yowarsky is 39. He and his wife, Bobbie, have two children, Michael 9, and Lisa 6.



JACK FAULKNER
Chief Defensive Coach

Jack Faulkner is the man Tom Fears selected to mastermind the Saint's defense.

Faulkner is a former head coach and general manager of the Denver Broncos of the American Football League. Faulkner guided the Broncos to their best season ever with a 7-7 record in 1962 and was named AFL Coach of the Year in that season.

After leaving the Broncos, Faulkner served a year as defensive backfield coach with the Minnesota Vikings and then saw duty in the personnel and scouting department of the Los Angeles Rams in 1966.

Faulkner, a native of Youngstown, Ohio, and a graduate of Miami University of Oxford, Ohio, lettered in football, baseball and track at Miami and, at the same time, began a long association with Sid Gillman, presently head coach-general manager of the San Diego Chargers.

Faulkner started his coaching career under Gillman as an assistant at the University of Cincinnati in 1955. When Gillman joined the Los Angeles Rams as head coach in 1956, Faulkner went as an assistant.

Gillman took over as head coach of the Los Angeles Chargers in the AFL's first year in 1960 and Faulkner went too. When the Chargers moved to San Diego, Faulkner did, too, but his long association with Gillman ended in 1962 when Faulkner joined the Denver staff.

Jack and his wife, Betty, have two children, Cathy 15, and Jon 4.



ED KHAYAT
Defensive Line Coach

Youngest member of the Saints' coaching staff is Ed Khayat, named to assist Jack Faulkner as the Saints' defensive line coach.

Khayat, 31, is starting his coaching career this season after an illustrious playing career in college and two professional football leagues.

A native of Moss Point, Miss., Khayat attended Millsaps College in Jackson, Miss., for one season and then attended one year at Perkinson, Miss., Junior College. He then transferred to Tulane to complete his last two seasons of varsity football.

Khayat was signed by the Washington Redskins as a free agent in 1957 and then spent nine seasons in the National Football League more or less shuttling back and forth between the Redskins and the Philadelphia Eagles.

Ed played with the Redskins in 1957, 1962 and 1963 and saw service with the Eagles from 1958 through 1961 and again in 1964 and 1965. He completed his active playing career last year with the Boston Patriots in the American Football League. As a professional, Khayat played both defensive end and defensive tackle and should be well qualified to help develop the fledgling Saints' defensive forces.

Ed was married in May, 1966, to the former Miss Deborah Dearing. They have no children.



BOB SHAW
Receiver Coach

The third member of the Saints' offensive coaching staff is receiver coach Bob Shaw, who came to the Saints from the Toronto Argonauts of the Canadian League, where he had been head coach the last two seasons.

Shaw, 43, is a former all-America football and basketball at Ohio State. A big man at 6-4 and 240 pounds, he played professional basketball for the Toledo Jeeps in the NBA but football was his game, as can be evidenced by an eight-year pro playing career and a 14-year coaching career.

Bob was a member of the Cleveland Rams world championship team in 1945 and later was a member of the Rams' western division championship team in 1949 after the Rams had moved to Los Angeles. A broken neck suffered late in the 1947 season kept him out of action in 1948.

Shaw's greatest day as a professional football player came in 1950 when, as a member of the Chicago Cardinals team, he caught five touchdown passes, an NFL record that still stands. He played at Calgary in 1951 and 1952 and at Toronto in 1953.

After coaching high school football in Ohio, Shaw saw service as a head coach at New Mexico Military Institute, as an assistant coach with both the San Francisco 49ers and the Baltimore Colts and as a head coach with the Saskatchewan Roughriders before joining the Toronto staff.

Shaw, a native of Richwood, Ohio, and his wife, Mary, have two children, Webb 15, and Amy 8.



VIC SCHWENK
Director of Player Personnel

The most critical early job of a new organization, that of director of player personnel, went to Vic Schwenk, veteran scout and former player personnel director of the Los Angeles Rams. Schwenk was the first person to join John W. Mecom Jr.'s organization last winter.

Schwenk, who has spent most of his life in Los Angeles, was a 60-minute end on the UCLA Rose Bowl team of 1947. He later finished his college playing career at Occidental College.

His coaching career began at Colton High School and San Marino High School in southern California and concluded with a four-year head coaching stint at Occidental. His record there was 23 wins and 12 losses and included two conference titles.

Schwenk joined the Los Angeles Rams staff in 1954 as a scout. He became director of player personnel in 1963. He was a member of the Rams offensive coaching staff in 1964 and 1965 and then joined the Edmonton Eskimos in the Canadian League as general manager in 1966. However, illness in his family forced his return to Los Angeles and he served as a special game scout under George Allen with the Rams in the 1966 season.

He joined the Saints' staff and began the arduous task of starting a new team's player personnel program in December, 1966.

THE SAINTS TRAINERS



FRED "Pete" PETTEERSON

Peterson's experience as an athletic trainer goes back to 1945 when he became assistant trainer for the Chicago Black Hawks hockey team. Since then, he has been head trainer at Ohio Wesleyan, Wyoming, for Ottawa of the Canadian Football League, and more recently, with Fullerton (Calif.) Junior College and Occidental. Additionally, he has worked with the Los Angeles Rams trainer for the past five years.

Pete, a former national director of the National Athletic Trainer's Association, joined the Saints' organization as co-trainer early in 1967.

Peterson was educated at Cornell and Oberlin College. He is married (Annie).



BOBBY J. YARBOROUGH

After six and one-half years as assistant trainer and equipment manager of the AFL's Kansas City Chiefs, Yarborough was appointed co-trainer of the Saints in April.

Yarborough, 30, attended the University of Texas where he served as student trainer under the veteran Frank Medina. He was the trainer for the old Houston Buffs for their final games in the Texas League, and joined the then Dallas Texans (now the Chiefs), in 1961.

The Yarborough family, wife Joyce and sons Craig (14), Keith (12), Chris (10) and Brian (5) make their home in suburban Jefferson Parish.

THE SAINTS EQUIPMENT MEN



CHARLIE SHEPHERD

The Saints' Equipment Manager is 29-year-old Charlie Shepherd, a native of Atlanta, Ga. Shepherd served as the Atlanta Falcon's assistant equipment man during 1966. Before his assignment with Atlanta, was in the sporting goods business.

Charlie and his wife Mary Ann are the parents of eight-year-old Amanda Regina.



WALLACE BROWN

Wallace Brown, 27, serves as the Saints' assistant equipment manager.

The native New Orleansian attended Dillard University, and formerly worked with the New Orleans Recreation Department as park supervisor and coach.

Brown and his wife Connie expect their first child this year.



SAINTS MASCOT

A true "Saint," a Saint Bernard puppy bred and donated by the Heiligehof Kennels in Morrison, Colorado, will serve as the official Saints mascot in 1967. The puppy will be six months old in August, 1967, and its care has been donated to the Saints by the Louisiana Restaurant Association. The Association, official local sponsor of the puppy, in mid-summer, 1967, started a public contest to pick a name for the Saint Bernard. ?????? will be on hand for every game the Saints play at home.



SAINTS CHEERLEADERS

Tryouts were held late in July for high school juniors and seniors who will serve as the Saints cheerleaders for all 1967 home games. The area students cheer for the Saints on a voluntary basis, with their uniforms and supplies furnished by the club. The young ladies will be attired in a costume similar to the one worn here by Mrs. Joanne Goldman of the Saints ticket staff.



1967 HALFTIMES

Outstanding high school and college bands from the Louisiana and Mississippi area will perform at halftime during the Saints first season. And, of course, fans in Tulane Stadium and television viewers across the land, will be seeing lots of the Saints' own Al Hirt and his band. The famed jazzman is one of the Saints owners—and one of their biggest fans. Hirt and his band will play before and during each of the home games . . . and make sure that the "Saints Go Marchin' In".

THE N.F.L.'S NEWEST TEAM

THE SAINTS OF 1967



THE NEW ORLEANS SAINTS, 1967

The Saints Roster.....	18-19
Expansion Pool — How the Saints Drafted.....	20
Veterans' Roster, 1967.....	21
Veterans' Biographies.....	22-47
1967 Rookie Draft List.....	48
Rookies' Roster, 1967.....	49
Rookies' Biographies.....	50-62

NEW ORLEANS SAINTS ROSTER—1967

OFFENSE

No.	Name	Pos.	Ht.	Wt.	Age	Yr.	College
ENDS AND FLANKERS							
46	Dan Abramowicz	FI	6-1	197	21	1	Xavier (Ohio)
86	Tom Hall	FI	6-2	195	27	6	Minnesota
88	Ben Hart	SE	6-2	205	21	1	Oklahoma
20	Steve Heckard	SE	6-1	195	24	3	Davidson
84	Jim Hester	TE	6-4	225	22	1	North Dakota
89	Kent Kramer	TE	6-4	235	23	2	Minnesota
22	Elijah Nevett	FL	6-0	185	23	1	Clark College
29	Ray Ogden	SE	6-5	225	25	3	Alabama
48	Marcus Rhoden	FI	5-9	165	21	1	Mississippi State
27	Walter Roberts	FI	5-10	163	25	4	San Jose State
82	Roosevelt Robertson	TE	6-3	205	24	1	North Carolina College
25	Jerry Simmons	SE	6-1	189	24	3	Bethune-Cookman
85	Bruce Smith	SE	6-4	210	24	1	Brigham Young
28	Willie Walker	SE	6-3	200	23	2	Tennessee A&I

OFFENSIVE LINEMEN

62	Butch Allison	G	6-3	250	22	1	Missouri
78	Jim Battle	T	6-4	235	26	2	Southern U.
68	Mike Capshaw	T	6-4	255	23	1	Abilene Christian
64	Bill Carr	C	6-4½	215	21	1	Florida
*79	Lou Cordileone	G	6-0	250	29	4	Clemson
67	George Harvey	G	6-4	245	21	1	Kansas
50	Jake Kupp	G	6-3	235	26	4	Washington
70	Herman Lee	T	6-3	247	36	11	Florida A&M
56	John Morrow	C	6-3	248	34	11	Michigan
77	Ray Rissmiller	T	6-4	250	25	2	Georgia
73	Bill Sandeman	T	6-6	255	24	2	U. of Pacific
71	Tom Stangle	T	6-4	255	22	1	Dayton
63	Herschel Turner	G	6-3	245	25	5	Kentucky
54	Joe Wendryhoski	C	6-2	245	29	4	Illinois
61	Del Williams	G	6-2	245	21	1	Florida State

QUARTERBACKS

15	Gary Cuzzo	QB	6-1	198	26	5	Virginia
17	Bill Kilmer	QB	6-0	204	28	6	UCLA
19	Gary Wood	QB	5-11	188	25	4	Cornell

RUNNING BACKS

32	Tom Barrington	FB	6-1	218	23	3	Ohio State
42	John Gilliam	HB	6-1	190	21	1	So. Carolina State
5	Paul Hornung	HB	6-2	215	31	10	Notre Dame
30	Leslie Kelley	FB	6-3	223	21	1	Alabama
36	Don McCall	HB	5-11	195	22	1	Southern California
24	Bruce McLenna	HB	6-3	228	25	2	Hillsdale
40	Bob Smith	HB	6-0	203	25	4	North Texas State
31	Jim Taylor	FB	6-0	215	32	10	Louisiana State

DEFENSE

No.	Name	Pos.	Ht.	Wt.	Age	Yr.	College
DEFENSIVE LINEMEN							
81	Doug Atkins	DE	6-8	270	37	15	Tennessee
65	Tom Carr	DE	6-8	267	25	1	Morgan State
80	Jim Garcia	DE	6-4	250	23	3	Purdue
72	Earl Leggett	DT	6-3	265	33	10	Louisiana State
76	David Rowe	DT	6-6	265	21	1	Penn State
60	Brian Schweda	DE	6-3	240	24	2	Kansas
79	Larry Stephens	DT	6-3	250	28	8	Texas
74	Mike Tilleman	DT	6-5	280	23	2	Minnesota

LINEBACKERS

66	John Brown	LB	6-3	230	22	1	So. Carolina State
55	Jackie Burkett	OLB	6-4	228	30	7	Auburn
35	Ted Davis	MLB	6-1	232	25	4	Georgia Tech
57	Sylvester Greenwood	LB	6-1	235	22	1	Fresno State
33	Bob McKelvey	OLB	6-2	220	22	1	Northwestern
83	Barry Siler	OLB	6-5	234	21	1	Albion (Mich.)
53	Dave Simmons	MLB	6-4	245	24	3	Georgia Tech
37	Steve Stonebreaker	OLB	6-3	228	28	4	Detroit
38	Phil Vandersea	OLB	6-3	235	24	2	Massachusetts
59	Fred Whittingham	OLB	6-2	240	28	3	Cal. Poly (SLO)
87	Charles (Bo) Wood	OLB	6-3	225	21	1	North Carolina

DEFENSIVE BACKS

16	James (Bo) Burriss	S	6-3	195	22	1	Houston
47	Bruce Cortez	S	6-0	175	21	1	Parsons College
21	John Douglas	CB	6-1	195	22	1	Texas Southern
41	Gary Grossnickle	S	6-1	185	22	1	Missouri
26	Jimmy Heidel	S	6-1	185	23	2	Mississippi
*22	Marv Kendrick	CB	6-2½	200	23	1	Utah State
45	Elbert Kimbrough	S	5-11	197	29	7	Northwestern
0	Obert Logan	S	5-10	180	25	3	Trinity (Texas)
44	George Rose	CB	5-11	190	25	4	Auburn
39	Eugene Ross	S	6-2	189	21	1	Oklahoma
43	Bobby Lee Smith	CB	5-11	197	29	6	UCLA
49	George Stetter	S	5-11	180	21	1	Virginia
23	Dave Whitsell	CB	6-1	190	31	10	Indiana

SPECIALISTS

3	Paige Cothren	PK	5-10	215	32	4	Mississippi
4	Charles Durkee	PK	5-11	165	23	1	Okla. State
9	Thomas McNeill	Punt	6-1	195	23	1	Stephen F. Austin
11	Ron Widby	Punt	6-4	210	22	1	Tennessee

*Indicates duplicate number. If player makes squad, another number will be assigned.

THE SAINTS FROM THE EXPANSION DRAFT

To assure the fledgling New Orleans Saints a nucleus of veteran players, the National Football League used the same procedures to stock the Saints that were used in the formation of the Atlanta Falcons club a year earlier.

With the exception of Atlanta, which was exempted from the expansion draft this year, each of the other 14 clubs in the NFL were allowed to freeze 29 players, thus leaving 11 players from their active 40-man roster eligible to be selected by the Saints. After the Saints had selected one player from each club, each club then froze two more players and then the Saints selected two more players from each club's remaining eight unfrozen players. Altogether, the Saints selected 42 players from the other clubs in the National Football League.

While the teams in the NFL are limited to 40 active players for each game, the Saints will be allowed to carry 46 players on their active roster for the first two games and 42 players thereafter. However, 72 hours in advance of each game, the Saints must designate 40 players that will actually be eligible for the coming game.

EXPANSION POOL DRAFTEES

FROM BALTIMORE	FROM CHICAGO	FROM CLEVELAND
Jackie Burkett, LB	Riley Mattson, OT*	Jim Battle, OT
Ted Davis, LB	Brian Schweda, DE	John Morrow, C
Steve Stonebreaker, LB	Dave Whitsell, DB	Walter Roberts, FI
FROM DALLAS	FROM DETROIT	FROM GREEN BAY
Obert Logan, DB	Bill Cody, LB***	Bill Curry, Ct
Bill Sandeman, OT	Bobby Lee Smith, DB	Paul Hornung, HB
Larry Stephens, DT	Willie Walker, SE	Phil Vandersea, LB
FROM LOS ANGELES	FROM MINNESOTA	FROM NEW YORK
Steve Heckard, FI	Tom Hall, FI	Jim Garcia, DE
Earl Leggett, DT	George Rose, DB	Bob Schlotz, OT*
Joe Wendryhoski, G	Mike Tilleman, DT	Gary Wood, QB
FROM PHILADELPHIA	FROM PITTSBURGH	FROM ST. LOUIS
Dave Cahill, DE**	Charlie Bradshaw, OT†	Jimmy Heidel, DB
Ray Rissmiller, OT	Jerry Simmons, SE	Ray Ogden, TE
Fred Whittingham, LB	Bob Smith, HB	Dave Simmons, LB
FROM SAN FRANCISCO	FROM WASHINGTON	
Bill Kilmer, QB	Tom Barrington, FB	
Elbert Kimbrough, DB	Don Croftcheck, G***	
Kent Kramer, TE	Jake Kupp, G	

*Did Not Report.
**Traded to Los Angeles

***Traded to Chicago
****Injured

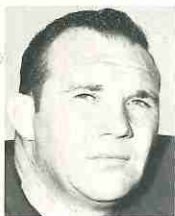
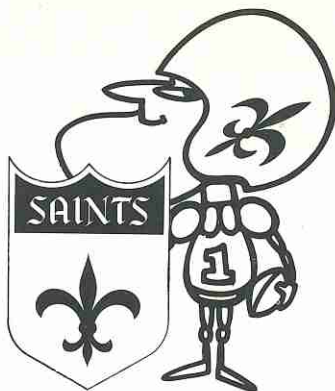
†Traded to Baltimore.
‡Traded to Detroit.

SAINTS' VETERAN ROSTER, 1967

NO.	NAME	POS.	HT.	WT.	AGE	YR.	1966 CLUB
0	Obert Logan	DB	5-10	180	25	3	Dallas
3	Paige Cothren	K	5-10	215	32	4	Philadelphia ('59)
5	Paul Hornung	RB	6-2	215	31	10	Green Bay
15	Gary Cuozzo	QB	6-1	198	26	5	Baltimore
17	Bill Kilmer	QB	6-0	204	28	6	San Francisco
19	Gary Wood	QB	5-11	188	25	4	New York
20	Steve Heckard	SE	6-1	195	24	3	Los Angeles
23	Dave Whitsell	DB	6-1	190	31	10	Chicago
24	Bruce McLenna	RB	6-3	228	25	2	Detroit
25	Jerry Simmons	SE	6-1	189	24	3	Pittsburgh
26	Jimmy Heidel	DB	6-1	185	23	2	St. Louis
27	Walter Roberts	FL	5-10	163	25	4	Cleveland
28	Willie Walker	SE	6-3	200	24	2	Tennessee A&I
29	Ray Ogden	SE	6-5	225	25	3	St. Louis
31	Jim Taylor	RB	6-0	215	32	10	Green Bay
32	Tom Barrington	RB	6-1	218	23	3	Washington
35	Ted Davis	LB	6-1	232	25	4	Baltimore
37	Steve Stonebreaker	LB	6-3	228	28	4	Baltimore
38	Phil Vandersea	LB	6-3	235	24	2	Green Bay
40	Bob Smith	RB	6-0	203	25	4	Pittsburgh
43	Bobby Lee Smith	DB	5-11	197	29	6	Detroit
44	George Rose	DB	5-11	190	25	4	Minnesota
45	Elbert Kimbrough	DB	5-11	197	29	7	San Francisco
50	Jake Kupp	G	6-3	235	26	4	Washington
53	Dave Simmons	LB	6-4	245	24	3	St. Louis
54	Joe Wendryhoski	C	6-2	245	29	4	Los Angeles
55	Jackie Burkett	LB	6-4	228	30	7	Baltimore
56	John Morrow	C	6-3	248	34	11	Cleveland
59	Fred Whittingham	LB	6-2	240	28	3	Philadelphia
60	Brian Schweda	DE	6-3	240	24	2	New York
63	Herschel Turner	G	6-3	245	25	5	St. Louis
70	Herman Lee	T	6-3	247	36	11	Florida A&M
72	Earl Leggett	DT	6-3	265	33	10	Los Angeles
73	Bill Sandeman	T	6-6	255	24	2	Dallas
74	Mike Tilleman	DT	6-5	280	23	2	Minnesota
77	Ray Rissmiller	T	6-4	250	25	2	Philadelphia
78	Jim Battle	T	6-4	235	25	2	Cleveland
79	Larry Stephens	DT	6-3	250	28	8	Dallas
79*	Lou Cordileone	G	6-0	250	29	4	Clemson
80	Jim Garcia	DE	6-4	250	23	3	New York
81	Doug Atkins	DE	6-8	270	37	15	Tennessee
86	Tom Hall	FL	6-2	195	27	6	Minnesota
89	Kent Kramer	TE	6-4	235	23	2	San Francisco

* Indicates duplicate number. If player makes squad, another number will be assigned.

**INTRODUCING
THE
1967 SAINTS'
VETERANS**



ATKINS, DOUG

6-8, 270, Defensive End, 15th Year, Tennessee
Born May 8, 1930, at Humboldt, Tennessee
Joined Saints: Trade with Chicago, 1967

PRO: A No. 1 draft choice of the Cleveland Browns in 1953 . . . Played two years with Browns, then was traded to Chicago, where he played for 14 seasons . . . All Pro in 1960, 1961 and 1963 and in the Pro Bowl game eight of the last 10 years . . . One of the most respected defenders in the NFL . . . Came to the Saints along with Herman Lee in a trade for Don Croftcheck in July, 1967.

COLLEGE: Came to Tennessee as a basketball player, but talked into going out for football . . . UPI and INS All-America in 1952 and AP All-South that same year.

PERSONAL: Married . . . Now calls Knoxville, Tenn., home.



BARRINGTON, GEORGE THOMAS (Tom)

6-1, 218, Fullback, 2nd Year, Ohio State
Born January 29, 1944, at Lima, Ohio
Joined Saints: Expansion Draft, 1967
(from Washington)

PRO: Selected No. 3 in 1965 draft by Washington, also No. 16 by Kansas City in the AFL draft . . . Saw limited action for Washington in 1966, but considered a real comer . . . Played in six 1966 games.

COLLEGE: Rushed for 554 yards senior year at Ohio State (4.0 average) . . . Was fifth in nation in kickoff returns with 34.3 yard average for 14 returns as a senior . . . Played in the 1966 East-West Shrine game, Hula Bowl and Coaches All-America game.

PERSONAL: A marketing major at Ohio State . . . Married (Judith) . . . Now calls Columbus, Ohio, home.

PROFESSIONAL RECORD									
RUSHING					RECEIVING				
Year	No.	Yds.	Avg.	TD	Year	No.	Yds.	Avg.	TD
1966	10	37	3.7	0	1966	2	23	11.5	0



BATTLE, JAMES

6-4, 235, Offensive Tackle, 2nd Year, Southern U.
Born September 18, 1941, at Shreveport, Louisiana
Joined Saints: Expansion Draft, 1967
(from Cleveland)

PRO: Selected No. 6 by Cleveland in 1966 draft, also No. 7 by the Boston Patriots . . . Saw limited action, playing in six games with Cleveland as a rookie.

COLLEGE: A star defensive tackle at Southern University.

PERSONAL: Participated in four sports at Booker T. Washington High School in Shreveport . . . Has served two years in the U. S. Navy . . . Hobby is fishing . . . Married (Susie) . . . Still calls Shreveport, Louisiana, home.

**BURKETT, WALTER JACKSON (Jackie)**

6-4, 228, Linebacker, 7th Year, Auburn
 Born December 16, 1936, at Thorsby, Alabama
 Joined Saints: Expansion Draft, 1967
 (from Baltimore)

PRO: Drafted No. 1 as a future choice by Baltimore in 1959, in the original draft of the New York Titans a year later . . . Has been plagued by injuries through much of his professional career, but he's mighty good, when the injury bug isn't taking its bite . . . Played in all 14 games at Baltimore in 1966 . . . Interception record in NFL play shows one pilfer in 1961 and two in 1962.

COLLEGE: A two-time all-America at center and linebacker in college.

PRO: Received degree in forestry from Auburn in 1960 . . . Hobbies are golf and fishing . . . Married (Jacqueline) . . . Now calls Baltimore, Maryland, home.

**MORROW, JOHN MELVILLE JR. (Mandrake)**

6-3, 248, Center, 11th Year, Michigan
 Born April 27, 1933 at Port Huron, Michigan
 Joined Saints: Expansion Draft, 1967
 (from Cleveland)

PRO: Was selected No. 28 draft choice by Los Angeles in 1956, but he immediately became a valued performer . . . Played with Los Angeles in 1956, 1958 and 1959—military service interrupted his pro grid career in 1957 . . . Then was traded to Cleveland before the start of the 1960 season . . . Started career as a guard, but was shifted to center by the Rams in his rookie season and he has been there ever since . . . Played in Pro Bowl games in 1962 and 1964.

COLLEGE: A three-year regular at Michigan after one year at Staunton Military Academy.

PERSONAL: Hobbies are hunting and all outdoor sports . . . Comes from musical family and he plays trumpet, trombone and baritone horn . . . Married (Gail) . . . Now lives in North Olmsted, Ohio, a suburb of Cleveland.

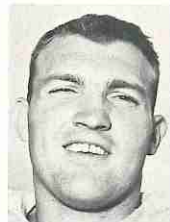
**CORDILEONE, LOU ANTHONY**

6-0, 250, Guard, 4th Year, Clemson
 Born August 4, 1938, at Jersey City, N. J.
 Joined Saints: Free Agent, 1967

PRO: Drafted by New York Giants in 1960 . . . Went to San Francisco 49ers in 1961 and then to Los Angeles in a trade for Elbert Kimbrough . . . Played with both the Rams and Steelers in 1962 . . . Has been inactive since that time.

COLLEGE: Played both offensive and defensive tackle three years at Clemson . . . Named to both all-conference and all-America teams in senior season.

PERSONAL: Has been in advertising business since 1962 . . . Married (JoAnn) . . . Now calls Los Angeles, Calif., home.

**COTHREN, PAIGE JENNINGS (Jug)**

5-10, 215, Placekicker, 4th Year, Mississippi
 Born July 12, 1935, at Natchez, Mississippi
 Joined Saints: Free Agent, 1967

PRO: Signed by the Los Angeles Rams after graduation from Mississippi . . . Played with the Rams in 1957 and 1958 and then with the Philadelphia Eagles in 1959 . . . Voluntarily retired after the 1959 season.

COLLEGE: Played fullback, as well as being the Ole Miss kicking specialist in college . . . Still holds two school records—most points in a career (151) and most field goals in a career (12).

PERSONAL: A general business major at Mississippi . . . Married (Mary) . . . Now calls Europa, Mississippi, home.

PROFESSIONAL RECORD**SCORING**

(Los Angeles - 1957, 1958; Philadelphia - 1959)

Year	TD	PAT	FG	Total
1957	0	38	11-19	71
1958	0	42	14-25	84
1959	0	1	8-18	25
TOTAL	0	81	33-62	180



CUOZZO, GARY SAMUEL

(Pronounced "Kwa-zo")

6-1, 198, Quarterback, 5th Year, Virginia
Born April 26, 1941 at Montclair, New Jersey
Joined Saints: Trade with Baltimore, 1967

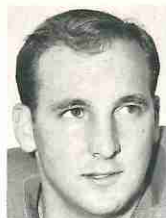
PRO: Signed as a free agent by the Baltimore Colts after a star-studded career at Virginia, Cuzzo developed into one of the top back-up quarterbacks in pro football behind Johnny Unitas at Baltimore . . . Obtained by the Saints in a trade with Baltimore that also brought Butch Allison to New Orleans in exchange for Bill Curry and two draft choices, including the Saints' No. 1 pick . . . Cuzzo first came into the spotlight in the 1965 season, when he replaced Unitas, who was injured . . . In his first "fireman" role against Chicago, he threw the winning touchdown pass against the Bears . . . The next week, in his first starting assignment, Cuzzo passed for a record five touchdowns in a 41-21 rout of the Minnesota Vikings . . . He completed 16 of 26 passes for 208 yards that day . . . Later that year, in another critical game against Green Bay, Cuzzo was felled by a shoulder separation, went out for one series of downs and then came back to finish the game in an unusual show of determination and courage . . . Cuzzo helped the Colts notch 27 points, completing 20 of 38 passes for 212 yards and one touchdown, but Green Bay did eventually prevail . . . Following the game, he was forced to undergo surgery that ended his playing for the season . . . Cuzzo's top 1966 game was against Detroit, when he completed 12 of 18 passes for 178 yards and one TD . . . General consensus is that Cuzzo is ripe for a No. 1 quarterback job and he'll get that chance with the Saints.

COLLEGE: A three-year regular at Virginia, Cuzzo completed 98 of 181 attempts for a 54.1 percentage as a senior . . . A phi Beta Kappa dental student, he was by-passed by pro scouts who felt he more likely would pursue a dental career than try the pro football game.

PERSONAL: In the off-season, is still a dental student at the University of Tennessee dental school in Memphis . . . Attended Glen Ridge, N. J., high school . . . Hobby is golf . . . Married (Peggy) . . . Two children (Kimberly and Elizabeth) . . . Now resides in Glen Ridge, N. J.

PROFESSIONAL RECORD

Year	PASSING						Year	RUSHING			
	Att.	Comp.	Pct.	Gain	Int.	TD		No.	Yds.	Avg.	TD
1963	17	10	.588	104	0	0	1963	3	26	8.7	0
1964	36	15	.417	163	3	2	1964	7	-2	-0.3	0
1965	105	54	.514	700	4	7	1965	6	8	1.3	0
1966	50	26	.520	424	2	4	1966	1	9	9.0	0
TOTAL	208	105	.505	1391	9	13	TOTAL	17	41	2.4	0



DAVIS, RICHARD KENNETH (Ted)

6-1, 232, Linebacker, 4th Year, Georgia Tech
Born July 27, 1942, at Memphis, Tennessee
Joined Saints: Expansion Draft, 1967
(from Baltimore)

PRO: No. 1 draft choice of the San Diego Chargers and No. 4 draft choice of the Baltimore Colts in 1964 . . . Spent some time as a tight end as a rookie with Baltimore and also has played all three linebacking spots at Baltimore . . . Intercepted one pass with 15-yard return in 1966 . . . Played in all 14 games with Baltimore in 1964 and 1965 and then in 10 games last year.

COLLEGE: A natural athlete, Davis played end in college, was also Georgia Tech's top blocker . . . Named to Georgia Tech's modern "all-time" team in recent vote . . . Played in College All-Star game in 1964.

PERSONAL: A student at Georgia Tech in the off-season . . . Hobby is golf . . . Married (Linda Dale) . . . Now calls Atlanta, Georgia, home.



GARCIA, JAMES RONALD (Chico)

6-4, 250, Defensive End, 3rd Year, Purdue
Born March 7, 1944, at Chicago, Illinois
Joined Saints: Expansion Draft, 1967
(from New York)

PRO: Garcia was the Cleveland Browns' initial draft choice (although actually in the second round) in 1965 . . . Also the No. 7 choice of the Denver Broncos the same year . . . Traded to Giants prior to the 1966 season and was moved to a startling defensive end role when Roosevelt Davis was injured . . . Injury (chipped bone in foot) sidelined Garcia tail end of 1966 season, but he saw action in 10 games.

COLLEGE: An all-Big Ten and all-America tackle selection while at Purdue . . . Played in both the East-West and College All-Star games in 1965.

PERSONAL: Received education degree from Purdue in 1965 . . . Single . . . Now resides in New York.



HALL, THOMAS FRANCIS

6-2, 195, Flanker, 6th Year, Minnesota
 Born April 3, 1940, at Wilmington, Delaware
 Joined Saints: Expansion Draft, 1967
 (from Minnesota)

PRO: No. 8 draft choice of Detroit and No. 22 of Buffalo in 1962 . . . Played two years at Detroit and then was purchased by Minnesota prior to the 1964 season . . . Biggest pro season was in 1964, when he had 23 receptions for 325 yards and two TDs . . . Caught six passes in Minnesota's 24-23 upset of Green Bay in 1964 . . . Played in all 14 Minnesota games in 1966.

COLLEGE: An all-Big Ten end at Minnesota and a key man on two Gopher Rose Bowl teams.

PERSONAL: Received degree in education from Minnesota in 1964 . . . Hobby is wood-carving . . . Married (Julie) . . . Now calls South Minneapolis, Minnesota, home.

PROFESSIONAL RECORD									
(Detroit—1962, 1963; Minnesota—1964, 1965, 1966)									
PASS RECEIVING					PUNT RETURNS				
Year	No.	Yds.	Avg.	TD	Year	No.	Yds.	Avg.	TD
1962	1962
1963	3	29	9.7	1	1963	10	107	10.7	0
1964	23	325	14.1	2	1964
1965	15	287	19.1	2	1965	3	21	7.0	0
1966	23	271	11.8	2	1966
TOTAL	64	912	14.3	7	TOTAL	13	128	9.8	0
KICKOFF RETURNS					SCORING				
Year	No.	Yds.	Avg.	TD	Year	TD	PAT	FG	Total
1962	1	16	16.0	0	1962	0	0-0	0-0	0
1963	6	143	23.8	0	1963	1	0-0	0-0	6
1964	1964	2	0-0	0-0	12
1965	4	93	23.3	0	1965	2	0-0	0-0	12
1966	7	141	20.1	0	1966	2	0-0	0-0	12
TOTAL	18	393	21.6	0	TOTAL	7	0-0	0-0	42



HECKARD, ROBERT STEPHEN (Steve)

6-1, 195, Split End, 3rd Year, Davidson
 Born April 12, 1943, at Winston-Salem, North Carolina
 Joined Saints: Expansion Draft, 1967
 (from Los Angeles)

PRO: Signed by Los Angeles as a free agent in 1965 . . . Used mainly on special teams for the Rams . . . Has great versatility . . . May be another top "sleeper" in the expansion draft picks by the Saints.

COLLEGE: Played as a split end and quarterback in college, setting a school record for most completed passes in a season as a senior, after switching from end the previous season.

PERSONAL: Received BA degree from Davidson in 1965 . . . Hobbies are golf, handball and hunting . . . Single . . . Still calls Winston-Salem, North Carolina, home.

PROFESSIONAL RECORD				
PASS RECEIVING				
Year	No.	Yds.	Avg.	TD
1965	1	4	4.0	0
1966	5	102	20.4	0
TOTAL	6	106	17.7	0



HEIDEL, JAMES BYRNES

6-1, 185, Defensive Back, 2nd Year, Mississippi
 Born December 1, 1943, at Yazoo City, Mississippi
 Joined Saints: Expansion Draft, 1967
 (from St. Louis)

PRO: A No. 9 future choice of St. Louis in 1965 and a No. 3 future choice of the New York Jets the same year . . . Heidel got a good start as a rookie with the Cardinals, playing in all 14 games.

COLLEGE: Heidel was a quarterback and safety at Mississippi, but excelled on defense . . . Played in the Sugar, Bluebonnet and Liberty bowls while in college, also in the College All-Star game in 1966.

PERSONAL: Received business administration degree from Mississippi in 1966 . . . Lists his hobbies as all sports . . . Married (Joanna) . . . Is continuing his education and hopes to enter advertising . . . Now lives in University, Mississippi.



HORNUNG, PAUL

6-2, 215, Offensive Halfback, 10th Year, Notre Dame
Born December 23, 1935, at Louisville, Kentucky
Joined Saints: Expansion Draft, 1967
(from Green Bay)

PRO: Packers' No. 1 choice (bonus) in 1957 . . . Played quarterback in his rookie Packer season, but shifted to halfback midway through the season and finished second on the club in rushing . . . Led Packers in rushing and scoring in 1958-59 . . . In 1959, he led the NFL in scoring with 94 points and then set an all-time league scoring mark in 1960 with 176 points . . . Voted the Most Valuable Player in the NFL in both 1960 and 1961 . . . He has been named to the All-Pro team three times and he was voted the most valuable player after the 1961 championship game, in which he scored a record 19 points . . . Scored five TD's in game with Colts late in the 1965 season.

COLLEGE: Hornung made every all-America team his last two years at Notre Dame . . . Climaxed college career by winning the Heisman trophy . . . Hornung led Notre Dame in passing, rushing, scoring, kickoff and punt returns.

PERSONAL: Received degree in business administration from Notre Dame in 1957 . . . Hobby is golf . . . Married after the 1966 season (Pat) . . . Calls Louisville, Kentucky, home.



KILMER, WILLIAM ORLAND

6-0, 204, Quarterback, 6th Year, UCLA
Born September 5, 1939 at Topeka, Kansas
Joined Saints: Expansion Draft, 1967
(from San Francisco)

PRO: San Francisco's No. 1 draft choice in 1961 and the No. 5 choice of San Diego . . . Until he was injured in an automobile accident after the 1962 season, Kilmer was the triggerman in San Francisco's celebrated shotgun offense . . . Because of injuries suffered in that accident—he missed the entire 1963 season and did not play in regular league games in 1965, Kilmer is now strictly a passing quarterback.

COLLEGE: Kilmer led the nation in total offense as a senior at UCLA with 1889 yards (1086 passing and 803 rushing) . . . Named to most all-America teams as a senior in 1960.

PERSONAL: Married (Patricia) . . . Now calls San Francisco, California, home.

HORNUNG'S PROFESSIONAL RECORD

(All with Green Bay Packers)

RUSHING					PASS RECEIVING				
Year	No.	Yds.	Avg.	TD	Year	No.	Yds.	Avg.	TD
1957	60	319	5.3	3	1957	6	34	5.7	0
1958	69	310	4.5	2	1958	15	137	9.1	0
1959	152	681	5.4	7	1959	15	113	7.5	0
1960	160	671	4.2	13	1960	28	257	9.2	2
1961	127	597	4.7	8	1961	15	145	9.7	2
1962	57	219	3.8	5	1962	9	168	18.7	2
1963	Did not play				1963	Did not play			
1964	103	415	4.0	5	1964	9	98	10.9	0
1965	89	299	3.4	5	1965	19	336	17.7	3
1966	76	200	2.6	2	1966	14	192	13.7	3
TOTAL	893	3711	4.1	50	TOTAL	130	1480	11.4	12
CHAMP.	84	263	3.1	2	CHAMP.	7	63	9.0	0

PASSING

Year	Att.	Comp.	Int.	Yds.	Pct.	TD
1957	6	1	0	1	.167	0
1958	1	0	0	0	.000	0
1959	8	5	0	95	.625	2
1960	16	6	0	118	.375	2
1961	5	3	0	42	.625	1
1962	6	4	2	80	.667	0
1963	Did not play					
1964	10	3	1	25	.300	0
1965	2	1	1	19	.500	0
1966	1	1	0	5	1.000	0
TOTAL	55	24	4	383	.436	5
CHAMP.	4	1	0	21	.250	0

SCORING

Year	TD	PAT	FG	Tot.
1957	3	0-0	0-4	18
1958	2	22-23	11-21	67
1959	7	31-32	7-17	94
1960	15	41-41	15-28	176
1961	10	41-41	15-22	146
1962	7	14-14	6-10	74
1963	Did not play			
1964	5	41-43	12-38	107
1965	8	0-0	0-0	48
1966	5	0-0	0-0	30
TOTAL	62	190-194	66-140	760
CHAMP.	2	5-	5-	

Additional Statistic: Returned 10 kickoffs for 248 yards in 1958.

KILMER'S PROFESSIONAL RECORD

(All with San Francisco)

RUSHING					PASS RECEIVING				
Year	No.	Yds.	Avg.	TD	Year	No.	Yds.	Avg.	TD
1961	96	509	5.3	10	1961	10	None		
1962	93	478	5.1	5	1962	16	152	9.5	1
1963	Did not play				1963	Did not play			
1964	36	113	3.1	0	1964	11	136	12.4	0
1965	Did not play				1965	Did not play			
1966	3	23	7.7	0	1966	No receptions			
TOTAL	228	1123	4.9	15	TOTAL	27	288	10.7	1

PASSING

Year	Att.	Comp.	Int.	Yds.	Pct.	TD
1961	34	19	4	286	.559	0
1962	13	8	3	191	.615	1
1963	Did not play					
1964	14	8	1	92	.571	1
1965	Did not play					
1966	16	5	1	84	.313	0
TOTAL	77	40	9	653	.519	2



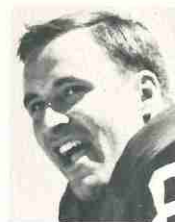
KIMBROUGH, ELBERT LEON (Kim or "E")
 5-11, 196, Defensive Back, 7th Year, Northwestern
 Born March 24, 1938, at Galesburg, Illinois
 Joined Saints: Expansion Draft, 1967
 (from San Francisco)

PRO: No. 2 draft choice of Los Angeles in 1961, also No. 4 choice of Oakland . . . After playing rookie season with Los Angeles, Kimbrough was sent to the 49ers in a trade for Lou Cordeleon . . . 1966 was his third season as a regular in the 49ers defensive backfield . . . Noted for his hard-hitting style of play . . . Was the only 49er player with his own fan club.

COLLEGE: Was leading pass receiver in the Big Ten, an all-Conference selection and a second unit all-America choice his senior year at Northwestern . . . Played in the East-West Shrine game in 1960.

PERSONAL: Received degree in education from Northwestern in 1961 . . . Works for Standard Oil Company in the off-season . . . Hobbies are listening to music and traveling . . . Married (Sherri Lynn) . . . Now calls Oakland, California, home.

PROFESSIONAL RECORD				
(Los Angeles—1961; San Francisco—All Other Years)				
Year	INTERCEPTIONS			
	No.	Yds.	Avg.	TD
1961
1962
1963	1	45	45.0	0
1964	2	3	1.5	0
1965	2	5	2.5	0
1966	3	60	20.0	0
TOTAL	8	113	14.1	0



KRAMER, KENT DEVLIN
 6-4, 235, Tight End, 2nd Year, Minnesota
 Born July 21, 1944, at Los Angeles, California
 Joined Saints: Expansion Draft, 1967
 (from San Francisco)

PRO: No. 9 draft choice of San Francisco in 1966 and No. 13 choice of Miami of the AFL . . . Did a fine job as a rookie for the 49ers, including catching three TD passes.

COLLEGE: Lettered two years at the University of Minnesota in 1964 and 1965.

PERSONAL: Received physical education degree from Minnesota in 1966 . . . Hobbies are golf and all sports . . . Married (Kendra) . . . Now resides in Redwood City, California.

PROFESSIONAL RECORD				
Year	PASS RECEIVING			
	No.	Yds.	Avg.	TD
1966	5	81	16.2	3



KUPP, JACOB RALPH (Jake)
 6-3, 235, Guard, 4th Year, Washington
 Born March 12, 1941, at Pasadena, California
 Joined Saints: Expansion Draft, 1967
 (from Washington)

PRO: No. 9 draft choice of Dallas in 1964 . . . Came to Dallas as a tight end, but shifted to guard early . . . Was a starter part of his rookie season and made the NFL all-rookie team . . . Went to the Redskins in exchange for two "high" draft choices in August, 1966 . . . Played in all 14 games each of his three NFL seasons.

COLLEGE: Played end at Washington, where he was also a starting pitcher on the baseball team.

PERSONAL: Has a BA in education, is working on his masters . . . Married (Carla) . . . Now lives in Sunnyside, Washington.



LEE, WILLIE HERMAN (Herman)

6-3, 247, Offensive Tackle, 11th Year, Florida A&M
Born August 29, 1931, at Phenix City, Alabama
Joined Saints: Trade with Chicago, 1967

PRO: Drafted in 23rd round by the Bears in 1954, but he served two years in the U. S. Army before entering pro football . . . Obtained by Pittsburgh on waivers, where he first played in 1956 . . . Traded back to Chicago after one year with the Steelers . . . Lee has been a regular with the Bears most of the time since 1958 . . . Obtained by Saints along with Doug Atkins in a trade for Don Croftcheck.

COLLEGE: Played in the Orange Blossom Classic in 1951, 1952 and 1953 while starring for Florida A&M.

PERSONAL: Married . . . Now calls Chicago, Illinois, home.



LEGGETT, EARL FRANKLIN (Huey Duck)

6-3, 265, Defensive Tackle, 10th Year, LSU
Born March 5, 1934 at Palatka, Florida
Joined Saints: Expansion Draft, 1967
(from Los Angeles)

PRO: A No. 1 draft choice of the Chicago Bears in 1957 . . . A defensive standout for the Bears from 1957 through 1965 with the exception of 1961, when he sat out an entire season with a knee injury . . . Traded to Los Angeles in August, 1966, for two 1967 draft choices.

COLLEGE: Played 2 years at Hinds (Miss.) Junior College and 2 years at Louisiana State . . . All-Southeastern Conference and second team All-America at LSU . . . Played in Blue-Gray game and Senior Bowl.

PERSONAL: Attended Hinds Junior College and then obtained bachelor of science degree from Louisiana State University in 1957 . . . Married (Bobbie) . . . Now calls Raymond, Mississippi, home.



LOGAN, OBERT CLARK (Little O)

5-10, 180, Defensive Back, 3rd Year, Trinity (Texas)
Born December 6, 1941 at Yoakum, Texas
Joined Saints: Expansion Draft, 1967 (from Dallas)

PRO: Signed as a free agent by the Dallas Cowboys in 1965 . . . A real go-getter for the Cowboys; chipped in with several big plays in the 1965 season . . . Signed as a defensive specialist, Logan switched to offense, before settling back to the free safety spot in Dallas.

COLLEGE: A four-year regular at Trinity (Texas), first two as a halfback, last two as a flanker . . . Three-time all-Texas college choice.

PERSONAL: Has degree in mathematics from Trinity (1965) . . . Single . . . Moved to New Orleans in 1967 off-season.

PROFESSIONAL RECORD				
INTERCEPTIONS				
Year	No.	Yds.	Avg.	TD
1965	3	5	1.7	0
1966	2	44	22.0	0
TOTAL	5	49	9.8	0



McLENNA, BRUCE OLIVER (Spike)

6-3, 228, Offensive Halfback, 2nd Year, Hillsdale
Born December 23, 1941, at Fenton, Michigan
Joined Saints: Trade with Detroit, 1967

PRO: No. 8 future choice of Detroit in 1965 and No. 9 future choice of Kansas City . . . Was beginning to play regularly when he was injured in the ninth game of the season against Chicago.

COLLEGE: Played defense at Michigan as a sophomore, then transferred to Hillsdale College, where he became an offensive star . . . First team Little All-America as a senior when he rushed for 1008 yards, caught 13 passes for 216 yards . . . Rushed for 916 yards as a junior and had two-year total offense mark of exactly 2200 yards . . . Scored 141 points in two years including 85 in senior season.

PERSONAL: Hobbies are hunting and golf . . . Single . . . Still resides in Fenton, Mich.

PROFESSIONAL RECORD									
RUSHING					RECEIVING				
Year	No.	Yds.	Avg.	TD	Year	No.	Yds.	Avg.	TD
1966	16	51	3.2	0	1966	3	13	4.3	0

See JOHN MORROW biography, page 24



OGDEN, RAYMOND DOUGLAS

6-5, 225, Split End, 3rd Year, Alabama
 Born September 2, 1942 at Jesup, Georgia
 Joined Saints: Expansion Draft, 1967
 (from St. Louis)

PRO: Drafted No. 3 by St. Louis in 1965 and No. 8 by Houston the same year . . . Has good speed, good hands, excellent size to play the tight end position . . . Returned two kickoffs for 55 yards in 1965 and one for no yards in 1966 . . . Played in 14 games in 1966.

COLLEGE: A teammate of Joe Namath's at Alabama . . . A three-year regular at Alabama as a flanker.

PERSONAL: Hobbies are hunting, fishing and skiing . . . Single . . . Now calls Odum, Georgia, home.



RISSMILLER, RAYMOND HAROLD

6-4, 250, Offensive Tackle, 2nd Year, Georgia
 Born July 22, 1942 at Easton, Pennsylvania
 Joined Saints: Expansion Draft, 1967
 (from Philadelphia)

PRO: No. 2 choice of the Eagles in 1965 and a No. 8 choice of Buffalo Bills the same year . . . Missed the entire 1965 season because of right knee injury suffered in the College All-Star game that August . . . Considered to be an outstanding prospect with all the tools needed to be a blue chipper . . . Played in just one game in 1966.

COLLEGE: A 1964 college all-America . . . Also all-Southeastern conference . . . Played in the Sun Bowl and Hula Bowl games, and then in the fateful College All-Star game.

PERSONAL: Received degree in education from Georgia in 1965 . . . Sings with rock-and-roll group in Atlanta-Athens, Georgia area during off-season . . . Single . . . Now calls Philadelphia, Pa., home.



ROBERTS, WALTER (Mr. Roberts, The Flea)

5-10, 163, Flanker, 4th Year, San Jose State
 Born February 15, 1942, at Texarkana, Texas
 Joined Saints: Expansion Draft, 1967
 (from Cleveland)

PRO: Signed as a free agent in 1964 . . . Roberts teamed with Leroy Kelly to give the Browns one of the NFL's most exciting punt return and kick-off return duos . . . When Paul Warfield was injured in 1965, Roberts proved to be a very capable backup man . . . Figured in Cleveland's longest scoring play of 1965, an 80-yard pass from Frank Ryan . . . Also returned a kickoff 88 yards against Philadelphia in 1965 . . . That year, Roberts ranked No. 5 in punt returns and No. 6 in kickoff returns in the NFL.

COLLEGE: Selected the most valuable player at San Jose State where he set school records in rushing, pass receiving, punt returns and kickoff returns . . . In college, he scored on a 93-yard scrimmage run, a 97-yard kickoff return, an 83-yard run with a screen pass, 74 yards on a punt return and 67 yards with an intercepted pass . . . In college, ran the 100-yard dash in track in :09.6 and broad jumped over 25 feet.

PERSONAL: Nicknamed "The Flea" by Cleveland Coach Blanton Collier because of his small size, but great speed and determination . . . Hobbies are photography and collecting record albums . . . Married (Carmen) . . . Now resides in Cleveland, Ohio.

PROFESSIONAL RECORD									
PUNT RETURNS					KICKOFF RETURNS				
Year	No.	Yds.	Avg.	TD	Year	No.	Yds.	Avg.	TD
1964	10	132	13.2	0	1964	24	661	27.5	0
1965	18	162	9.0	0	1965	18	493	27.4	0
1966	<u>11</u>	<u>42</u>	<u>3.8</u>	<u>0</u>	1966	<u>20</u>	<u>454</u>	<u>22.7</u>	<u>0</u>
TOTAL	39	336	8.6	0	TOTAL	62	1608	25.9	0
PASS RECEIVING					SCORING				
Year	No.	Yds.	Avg.	TD	Year	TD	PAT	FG	Total
1964	1	24	24.0	1	1964	1	0-0	0-0	6
1965	15	314	19.6	4	1965	4	0-0	0-0	24
1966	<u>2</u>	<u>19</u>	<u>9.5</u>	<u>0</u>	1966	<u>0</u>	<u>0-0</u>	<u>0-0</u>	<u>0</u>
TOTAL	19	357	18.8	5	TOTAL	5	0-0	0-0	30



ROSE, GEORGE LEE (Shorty)

5-11, 190, Defensive Back, 4th Year, Auburn
Born January 1, 1942, at Brunswick, Georgia
Joined Saints: Expansion Draft, 1967
(from Minnesota)

PRO: Drafted No. 3 by both Minnesota of the NFL and Buffalo of the AFL in 1964 . . . Rose was a regular through most of his first two seasons with the Vikings . . . Has great speed and agility that qualify him for the exacting job of the cornerback or safetyman.

COLLEGE: An offensive receiver as well as a defensive back at Auburn . . . All-conference in 1963 and all-America mention the same year.

PERSONAL: Received BA in education from Auburn in 1964 and masters in March, 1967 . . . Hobbies are boating, golfing and fishing . . . Married (Linda) . . . Still calls Brunswick, Georgia, home.

PROFESSIONAL RECORD									
Year	No.	Yds.	Avg.	TD	INTERCEPTIONS				
					1966	1	17	17.0	0
1964	6	48	8.0	1	TOTAL 8 71 8.9 1				
1965	1	6	6.0	0					

Additional Statistics: Returned eight kickoffs for 180 yards in 1964 and one for 20 yards in 1966.



SANDEMAN, WILLIAM S. (Sandy)

6-6, 255, Offensive Tackle, 2nd Year, University of Pacific
Born November 30, 1942, at Providence, R. I.
Joined Saints: Expansion Draft, 1967 (from Dallas)

PRO: Signed as a free agent by the Cowboys before the 1965 season, but a pre-season knee injury kept him out the entire season . . . Played in eight games in 1966.

COLLEGE: Sandeman played end and tackle for the University of Pacific, where he was a two-way standout.

PERSONAL: Attended Stockton Junior College and received BA degree from Pacific in 1965 . . . Hobbies are skin diving and sailing . . . Works in Stockton, California, in the off-season as a juvenile hall counselor . . . Married (Lee Rae) . . . Now resides in Stockton, California.



SCHWEDA, BRIAN CHRISTOPHER

6-3, 240, Defensive End, 2nd Year, Kansas
Born April 30, 1943, at Kansas City, Kansas
Joined Saints: Expansion Draft, 1967
(from Chicago)

PRO: Drafted No. 8 by Chicago and No. 16 by Denver in 1964 . . . Recurrence of a four-year-old hand injury that had healed improperly required a pre-training camp operation and Schweda missed the entire 1965 season . . . Schweda got his first starting shot midway into the 1966 season.

COLLEGE: An all-Big Eight conference selection at Kansas as a senior . . . A three-year regular and a teammate of Gale Sayers, both at Kansas and the Bears.

PERSONAL: Hobbies are fishing and hunting . . . Married (Jacolin) . . . Moved to New Orleans in the 1967 off-season.



SIMMONS, DAVID ALAN

6-4, 245, Linebacker, 3rd Year, Georgia Tech
Born August 3, 1943, at Elizabethtown, Kentucky
Joined Saints: Expansion Draft, 1967
(from St. Louis)

PRO: A No. 2 draft choice of the St. Louis Cardinals and a No. 5 choice of Buffalo in 1965 . . . Has all the attributes necessary to be an outstanding linebacker . . . Has excellent size, fine speed to go with it.

COLLEGE: Won three letters at Georgia Tech as a linebacker.

PERSONAL: Played high school football as a fullback in El Paso, Texas . . . Earned degree in industrial management from Georgia Tech in 1966 . . . Married (Sandra) . . . Lives in Macon, Georgia, in off-season. Now calls Chesboro, La. home.

**SIMMONS, JERRY BERNARD (J. B.)**

6-1, 189, Split End, 3rd Year, Bethune-Cookman
 Born November 14, 1942, at Nichols, Florida
 Joined Saints: Expansion Draft, 1967
 (from Pittsburgh)

PRO: Signed as a free agent after the 1964 season, Simmons spent most of the 1965 season either on the Pittsburgh taxi squad or playing for the Pennsylvania Mustangs semi-pro outfit . . . Played in four games in 1965, but in 13 games in 1966.

PERSONAL: Earned degree in education from Bethune-Cookman College . . . Single . . . Now resides in Bartow, Florida.

PROFESSIONAL RECORD									
RECEIVING					KICKOFF RETURNS				
Year	No.	Yds.	Avg.	TD	Year	No.	Yds.	Avg.	TD
1965	2	16	8.0	0	1965	1	28	28.0	0
1966	6	68	11.3	1	1966	10	196	19.6	0
TOTAL	8	84	10.5	1	TOTAL	11	224	20.4	0

Additional Statistics: Two punt returns for no yards in 1966.

**SMITH, ROBERT LEE (Bob)**

6-0, 203, Offensive Halfback, 4th Year, North Texas
 Born May 18, 1942, at Corpus Christi, Texas
 Joined Saints: Expansion Draft, 1967
 (from Pittsburgh)

PRO: Drafted No. 11 by Buffalo in 1964 and signed by the Bills, where he played two years . . . Joined Steelers just before 1966 season.

PERSONAL: Hobbies are fishing and bowling . . . Married (Moddie) . . . Still calls Corpus Christi, Texas, home.

PROFESSIONAL RECORD									
(Buffalo — 1964, 1965; Pittsburgh — 1966)									
RUSHING					RECEIVING				
Year	No.	Yds.	Avg.	TD	Year	No.	Yds.	Avg.	TD
1964	62	306	4.9	4	1964	6	72	12.0	0
1965	43	137	3.2	1	1965	12	116	9.7	0
1966	24	93	3.9	0	1966	3	26	8.7	0
TOTAL	129	536	4.2	5	TOTAL	21	214	10.2	0

Additional Statistics: Also returned three kickoffs for 68 yards in 1964.

**SMITH, ROBERT LEE (Bobby Lee)**

5-11, 197, Defensive Back, 6th Year, UCLA
 Born July 5, 1938, at Plain Dealing, Louisiana
 Joined Saints: Expansion Draft, 1967 (from Detroit)

PRO: A No. 7 draft choice of the Los Angeles Rams and a No. 26 future choice of the New York Titans . . . Played as a defensive back and a return specialist at Los Angeles . . . Once returned an interception 97 yards for touchdown against San Francisco in 1964 . . . Also returned a broken field goal attempt 94 yards for a score against Green Bay . . . Acquired by Detroit via the trade route during the 1965 season.

COLLEGE: Played as a single-wing tailback at UCLA . . . The Bruins' most valuable player in 1961.

PERSONAL: Received degree in physical education from UCLA in 1962 . . . Hobbies are golf and bridge . . . Married (Adrienne) . . . Resides in Los Angeles, California, during the off-season.

PROFESSIONAL RECORD									
(Los Angeles—1962, 1963, 1964; Los Angeles and Detroit—1965; Detroit—1966)									
PUNT RETURNS					KICKOFF RETURNS				
Year	No.	Yds.	Avg.	TD	Year	No.	Yds.	Avg.	TD
1962	1	7	7.0	0	1962	2	60	30.0	0
1963	2	20	10.0	0	1963	None			
1964	12	68	5.7	0	1964	20	489	24.5	0
1965	10	56	5.6	0	1965	18	475	26.4	0
1966	None				1966	None			
TOTAL	25	151	6.0	0	TOTAL	40	1024	25.6	0

Additional Statistics: Interceptions, 1 for 47 in 1962, 2 for 11 in 1963, 2 for 97 and one TD in 1964. Total Interceptions: 5 for 155.



STEPHENS, LAWRENCE CLIFTON (Huey)

6-3, 250, Defensive Tackle, 8th Year, Texas
Born September 24, 1938, at Buda, Texas
Joined Saints: Expansion Draft, 1967 (from Dallas)

PRO: No. 2 draft choice of Cleveland in 1960, also a choice of the New York Titans in the first AFL draft . . . Played with the Cleveland Browns in 1960 and 1961, with Los Angeles in 1962 and then was traded to Dallas before the start of the 1963 season . . . He played in Dallas four seasons . . . Can play either defensive end or defensive tackle.

COLLEGE: Played in the Sugar Bowl game in 1958 and Cotton Bowl game in 1960 . . . A defensive standout for the Longhorns.

PERSONAL: Hobbies are golf, fishing and gardening . . . Married (Jane) . . . With four children, Stephens was named the Dallas Cowboys' Father of the Year in 1965 . . . Resides in Dallas, Texas.



STONEBREAKER, STEVEN T. (Stoney)

6-3, 228, Linebacker, 6th Year, Detroit
Born October 28, 1938, at Moline, Illinois
Joined Saints: Expansion Draft, 1967
(from Baltimore)

PRO: Drafted by Minnesota as a No. 12 future choice in 1961 . . . Also a future choice of the Denver Broncos the same year . . . Played at Minnesota as a tight end in 1962—he caught 12 passes for 227 yards and one TD . . . Then switched to linebacker before the 1963 season and he's been at that position ever since . . . Went to Colts in a trade for guard Palmer Pyle before the 1964 season . . . Missed the first game of the 1964 season with a knee injury and then didn't miss a game until 1966, when injuries allowed him to play in only four regular-season games . . . Was named to the Sporting News all-Western Division team in 1965.

COLLEGE: Was two-time Catholic All-America while at Detroit University.

PERSONAL: Has degree in history and education from Detroit (1962) . . . Married (Virginia) . . . Now resides in Lutherville, Maryland.



TAYLOR, JIM

6-0, 215, Fullback, Tenth Year, L.S.U.
Born Sept. 20, 1935 at Baton Rouge, La.
Joined Saints: Free Agent, 1967

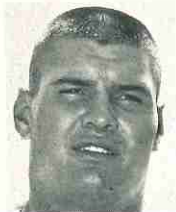
PRO: Second draft choice of Green Bay Packers in 1958 . . . Established record for most consecutive seasons with 1000 or more yards rushing with five, 1960 through 1964 . . . Enjoyed best year in 1962 when he scored 19 TD's . . . Was AP Player of Year, recipient of NEA's "Jim Thorpe Trophy", and named Sport Magazine's Top Pro Football Performer in 1962 . . . Holds third place in all-time NFL yardage behind Jim Brown and Joe Perry . . . Taylor holds record for most carries in championship games (5), 106, and most yards rushing in championship games (5), 392. Additionally, his championship game combined net yardage is another record, 501 yards rushing and receiving.

COLLEGE: Played just two seasons ('56 and '57) for L.S.U. after attending junior college, but led the SEC in scoring both seasons—first player in history to lead the conference two successive years. Scored 59 points in '56 and 86 in '57 . . . His 162 carries for 760 yards that year was SEC's best and he was named to the Look All-America team.

PERSONAL: Received BS (Education) in 1958 . . . Married (Dixie),

PROFESSIONAL RECORD										
RUSHING					RECEIVING					
Year	No.	Yds.	Avg.	TD	Year	No.	Yds.	Avg.	TD	
1958	52	247	4.8	2	1958	4	72	18.0	1	
1959	120	452	3.8	8	1959	9	71	7.9	2	
1960	230	1101	4.8	11	1960	15	121	8.1	0	
1961	243	1307	5.4	16	1961	25	175	7.0	1	
1962	272	1474	5.4	19	1962	22	106	4.8	0	
1963	248	1018	4.1	10	1963	13	68	5.2	1	
1964	235	1169	5.0	12	1964	38	354	9.3	3	
1965	207	734	3.5	4	1965	20	207	10.4	0	
1966	204	705	3.5	4	1966	41	331	8.1	2	
TOTAL	1811	8207	4.5	81	TOTAL	187	1505	8.0	10	
Champ*	106	396	3.7	1	Champ*	16	109	6.8	0	
SCORING					SCORING					
Year	TD	PAT	FG	Total	Year	TD	PAT	FG	Total	
1958	2			12	1964	15			90	
1959	8			48	1965	4			24	
1960	11			66	1966	6			36	
1961	16			96	TOTAL	91	0	0	546	
1962	19			114	Champ*	1	0	0	6	
1963	10			60	*Five Games					

(Returned seven kickoffs for 185 yards in '58)



TILLEMAN, MICHAEL JOHN (Mike)

6-5, 260, Defensive Tackle, 2nd Year, Montana
Born March 30, 1944, at Chinook, Montana
Joined Saints: Expansion Draft, 1967
(from Minnesota)

PRO: A No. 12 future choice of Minnesota in 1964 and a No. 5 choice of Denver . . . Tilleman, faced with a weight problem, sat out the 1965 season on the taxi squad . . . Considered to have fine possibilities as a pro if he can continue progress . . . Tilleman played in 12 games with Minnesota in 1966.

COLLEGE: Tilleman was a star at Montana State University, where he was a teammate of the Vikings' defensive halfback, the late Terry Dillon.

PERSONAL: Received BS degree from Montana in 1965 . . . Hobbies are hunting and fishing . . . Single . . . Now resides in Bloomington, Minn.



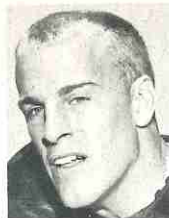
TURNER, HERSCHEL

6-3 1/2, 245, Guard, 4th Year, Kentucky
Born June 17, 1942 at Houston, Kentucky
Joined Saints: Trade with St. Louis, 1967

PRO: Drafted No. 2 by St. Louis and No. 9 by Oakland in 1964 . . . Cardinal Rookie of the Year in the 1964 season . . . Played regularly as a rookie, but was injured and did not play in 1966 . . . Reports indicate his knee injury has healed sufficiently to make him a strong candidate for a regular spot in the Saints' offensive line . . . Obtained in a trade with the Cardinals for an undisclosed future draft choice.

COLLEGE: Three-year letterman at Kentucky . . . All-Southeastern Conference in 1962 and 1963 and all-America in 1963 . . . Played both offensive and defensive in college . . . Played in both the Blue-Gray game and the Senior Bowl game after the 1963 season . . .

PERSONAL: A physical education major at Kentucky, where he was graduated in June, 1964 . . . A mile runner in track in high school . . . Married (Bonnie) . . . Now lives in St. Louis, Mo.



VANDERSEA, PHILLIP JOHN

6-3, 235, Linebacker, 2nd Year, Massachusetts
Born February 25, 1943, at Whitinsville, Mass.
Joined Saints: Expansion Draft, 1967
(from Green Bay)

PRO: Drafted No. 16 as a future by Green Bay in 1964 and No. 9 by Denver, also as a future the same year . . . Although he played full-back primarily in college, Vandersea is considered to be a sure-fire bet at the linebacking business . . . As a reserve linebacker and a member of the "suicide squads" (return teams), Vandersea proved himself a valuable member of Green Bay's Super Bowl championship team in 1966-67.

COLLEGE: A workhorse fullback at Massachusetts, carrying 100 times in 1965 . . . His potential is all the more remarkable in that he played only one varsity season at Massachusetts . . . Injury and ineligibility cut him out of the other two years of competition.

PERSONAL: Hobby is golf . . . Single . . . Still lives in Whitinsville, Massachusetts.



WALKER, WILLIE (Papa Red)

6-3, 200, Split End, 2nd Year, Tennessee A&I
Born September 15, 1942, at Anquilla, Mississippi
Joined Saints: Expansion Draft, 1967 (from Detroit)

PRO: A No. 4 draft choice of Detroit in 1966 and the No. 13 choice of Kansas City . . . His blazing speed and quick moves are his strongest attributes, plus a burning desire to play the pro game . . . Walker played in nine games in 1966 . . . 1966 statistics show Walker with one rushing attempt for four yards and one reception for 21 yards.

COLLEGE: Once caught six touchdown passes in a single game at Tennessee A&I . . . Captain of his team in college.

PERSONAL: Attended Coahoma Junior College, as well as Tennessee A&I . . . Hobby is chess . . . Single . . . Now calls Nashville, Tennessee, home.

**WENDRYHOSKI, JOSEPH STANLEY (Windy)****(Pronounced Wind-dree-hoski)****6-2, 245, Guard, 4th Year, Illinois****Born March 1, 1938 at West Frankfort, Illinois****Joined Saints: Expansion Draft, 1967****(from Los Angeles)**

PRO: A No. 13 draft choice of the New York Titans in 1960, Wendryhoski, signed with Chicago as a free agent before the 1964 season . . . Joe played a year in Vancouver, British Columbia, in the Canadian League and then served two years in the U. S. Army before beginning his NFL career . . . Went to Los Angeles before the 1965 season.

COLLEGE: A center at Illinois in his sophomore and junior seasons, Wendryhoski, moved to guard as a senior and won all-Big Ten honors . . . Also earned a Senior Bowl invitation.

PERSONAL: Earned degree in physical education from Illinois in 1961 . . . Hobbies are woodworking and barbecuing . . . Married (Brenda) . . . Now lives in Chicago, Illinois.

**WHITSELL, DAVID****6-1, 190, Defensive Back, 10th Year, Indiana****Born July 14, 1936, at Shelby Michigan****Joined Saints: Expansion Draft, 1967****(from Chicago)**

PRO: A No. 24 draft choice of Detroit in 1958 . . . Whitsell played three seasons for Detroit through 1960 and then was traded to the Bears, where he played through the 1966 season.

COLLEGE: Played two years as a defensive specialist at Indiana.

PERSONAL: Received BS degree from Indiana in 1958 . . . Married (Jacque) . . . Off-season home is Indianapolis, Indiana.

PROFESSIONAL RECORD

(Detroit—1958, 1959, 1960; Chicago — All Other Years)

INTERCEPTIONS									
Year	No.	Yds.	Avg.	TD	Year	No.	Yds.	Avg.	TD
1958	1	29	29.0	0	1963	6	61	10.2	1
1959	0	0	0.0	0	1964	2	57	28.5	0
1960	0	0	0.0	0	1965	4	67	16.8	1
1961	6	123	20.5	0	1966	3	44	14.7	0
1962	5	45	9.0	0	TOTAL	27	426	15.8	2

**WHITTINGHAM, FRED****6-2, 240, Linebacker, 3rd Year, California Poly (SLO)****Born February 4, 1939, at Boston, Massachusetts****Joined Saints: Expansion Draft, 1967****(from Philadelphia)**

PRO: First signed with the Los Angeles Rams as a free agent in 1962 and played five games with the Rams in 1964 . . . joined the Eagles' taxi squad in 1965 and then played in all 14 games in 1966.

COLLEGE: First attended Brigham Young University and then transferred to Cal Poly at San Luis Obispo . . . Whittingham was a member of the Cal Poly squad that was involved in a tragic plane crash, but he missed the trip because of what he calls a "lucky, very lucky" concussion.

PERSONAL: Married (Nancy) . . . Now calls Glendora, California, home.

**WOOD, GARY F. (Woody)****5-11, 188, Quarterback, 4th Year, Cornell****Born February 5, 1942, at Taylor, New York****Joined Saints: Expansion Draft, 1967****(from New York)**

PRO: Drafted No. 8 by the Giants and No. 17 by Boston in 1964 . . . Originally Wood was drafted as a defensive back, but made an instant hit in quarterback and won the No. 2 job behind Y. A. Tittle . . . When Tittle was injured, Wood stepped into the breach and performed excellently . . . Wood appeared in all 14 Giant games in 1966.

COLLEGE: Experienced a star-studded career at Cornell, where he set five Ivy League offensive records as a quarterback.

PERSONAL: Wood has a degree in hotel and restaurant management from Cornell . . . Married (Jill) . . . Now calls Riverdale, N. Y., home.

PROFESSIONAL RECORD

PASSING						RUSHING					
Year	Att.	Comp.	Int.	Yds.	Pct.	TD	Year	No.	Yds.	Avg.	TD
1964	143	66	3	952	.462	6	1964	39	158	4.1	3
1965	36	15	2	190	.417	1	1965	5	68	13.6	0
1966	170	81	13	1142	.476	6	1966	28	196	7.0	3
TOT.	349	162	18	2284	.464	13	TOTAL	72	422	5.8	6

THE SAINTS IN THE 1967 COMMON DRAFT

In history's first common draft involving the teams of the National and American Football Leagues and held on March 14 and 15, 1967, the New Orleans Saints acquired negotiation rights to 36 players. The Saints, as a first-year team, were allowed the first and last pick of each of the common draft's 17 rounds and, in addition, were allotted bonus picks at the conclusion of the second, third and fourth rounds. Following is a list of the Saints' college draft selections in 1967.

Draft No.	Name	Pos.	Ht.	Wt.	Age	College
1a	Traded to Baltimore					
1b	Leslie Kelley	FB	6-3	223	21	Alabama
2a	James (Bo) Burris	DB	6-3	195	22	Houston
2b	John Gilliam	HB	6-1	190	21	So. Carolina St.
2c	David Rowe	DE	6-6	265	21	Penn State
3a	Traded to Baltimore					
3b	Del Williams	G	6-2	245	21	Florida State
3c	Ben Hart	SE	6-2	205	21	Oklahoma
4a	Ron Widby	Punt	6-4	210	22	Tennessee
4b	Bill Carr	C	6-4	215	21	Florida
4c	Tom Stangle	OT	6-4	255	22	Dayton
5a	Don McCall	HB	5-11	195	22	Sou. California
5b	John Douglas	DB	6-1	195	22	Texas Southern
6a	George Harvey	G	6-4	245	21	Kansas
6b	Charles (Bo) Wood	LB	6-3	225	21	North Carolina
7a	Gary Hertzog****	G	6-2	250	23	Willamette
7b	Bob McKelvey	LB	6-2	220	22	Northwestern
8a	Sam Harris***	TE	6-4	228	21	Colorado
8b	Barry Siler	LB	6-5	234	21	Albion
9a	Tim Lavens *	TE	6-3	243	21	Idaho
9b	Eugene Ross	DB	6-2	189	21	Oklahoma
10a	Charlie Brown†	HB	5-10	187	21	Missouri
10b	Roosevelt Robertson	TE	6-3	205	24	No. Car. College
11a	Jim Benson****	G	6-3	245	22	Florida
11b	Bernard Corbin****	DB	6-1	187	21	Alabama A&M
12a	Ronnie Pack****	G	6-3	235	21	Texas Tech
12b	John Robinson**	FI	6-2	185	22	Tennessee A&I
13a	Bill Stetz****	LB	6-3	230	23	Boston College
13b	Gary Grossnickle	DB	6-1	185	22	Missouri
14a	Jim Hester	TE	6-4	225	22	North Dakota
14b	George Stetter	DB	5-11	180	21	Virginia
15a	John Snow *	DT	6-4	230	21	Wake Forest
15b	Darrell Johnson****	HB	6-1	211	22	Lamar Tech
16a	Marcus Rhoden†	FI	5-9	165	21	Miss. State
16b	Bruce Cortez	DB	6-0	175	21	Parsons College
17a	Dan Abramowicz	FI	6-1	197	21	Xavier (Ohio)
17b	Billy Bob Stewart**** (Acquired from Baltimore)	LB	6-0	235	22	Sou. Methodist
17c	Jim Walker †	DB	6-3	205	21	Providence

* Signed to play in Canada † Signed professional basketball contract in N.B.A.

** Did not sign pro contract. *** Injured, did not sign pro contract.

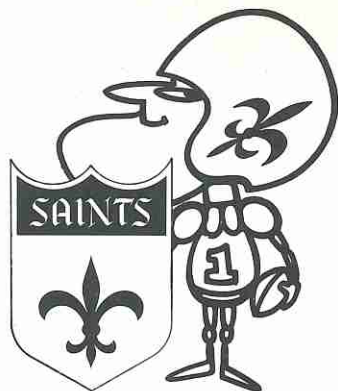
† Signed; injured in Saints camp. **** Signed; did not make squad.

SAINTS' ROOKIE ROSTER, 1967

NO.	NAME	POS.	HT.	WT.	AGE	HOW OBT.	COLLEGE
4	Charles Durkee	K	5-11	165	23	1	Oklahoma State
9	Thomas McNeill	Punt	6-1	195	23	1	Stephen F. Austin
11	Ron Widby	Punt	6-4	210	22	D-4a	Tennessee
16	James (Bo) Burris	DB	6-3	195	22	D-2a	Houston
21	John Douglas	DB	6-1	195	22	D-5b	Texas Southern
22	Elijah Nevett	FL	6-0	185	23	F.A.	Clark College
*22	Marv Kendricks	DB	6-2½	200	23	1	Utah State
30	Les Kelley	RB	6-3	233	21	D-1b	Alabama
33	Bob McKelvey	LB	6-2	220	22	D-7b	Northwestern
36	Don McCall	RB	5-11	195	22	D-5a	USC
39	Eugene Ross	DB	6-2	189	21	D-9b	Oklahoma
41	Gary Grossnickle	DB	6-1	185	22	D-13b	Missouri
42	John Gilliam	RB	6-1	190	21	D-2b	South Carolina State
46	Dan Abramowicz	FL	6-1	197	21	D-17a	Xavier (Ohio)
47	Bruce Cortez	DB	6-0	175	21	D-16b	Parsons College
48	Marcus Rhoden	FL	5-9	165	21	D-16a	Mississippi State
49	George Stetter	DB	5-11	180	21	D-14b	Virginia
57	Sylvester Greenwood	LB	6-1	235	22	1	Fresno State
61	Del Williams	G	6-2	245	21	D-3b	Florida State
62	Butch Allison	G	6-3	240	22	Trade	Missouri
64	Bill Carr	C	6-4	215	21	D-4b	Florida
65	Tom Carr	DE	6-3	267	25	1	Morgan State
66	John Brown	LB	6-3	230	22	1	So. Carolina State
67	George Harvey	G	6-4	245	21	D-6a	Kansas
68	Mike Capshaw	T	6-4½	255	22	1	Abilene Christian
71	Tom Stangle	T	6-4	255	22	D-4c	Dayton
76	David Rowe	DT	6-6	265	21	D-2c	Penn State
82	Roosevelt Robertson	TE	6-3	205	24	D-10b	North Carolina College
83	Barry Siler	LB	6-5	234	21	D-8b	Albion
84	Jim Hester	TE	6-4	225	22	D-14a	North Dakota
85	Bruce Smith	SE	6-4	210	24	1	Brigham Young
87	Charles (Bo) Wood	LB	6-3	225	21	D-6b	North Carolina
88	Ben Hart	SE	6-2	205	21	D-3c	Oklahoma

*Indicates duplicate number. If player makes squad, another number will be assigned.

INTRODUCING THE 1967 SAINTS' ROOKIES



ABRAMOWICZ, DAN

6-1, 197, Flanker, 1st Year, Xavier (Ohio)
Born July 13, 1945, at Steubenville, Ohio
Joined Saints: Draft Choice #17a, 1967

COLLEGE: A three-year letterman at Xavier University under Coach Edward Biles . . . Two-year choice as Catholic All-America in 1965 and 1966 . . . Played both offense and defense as a sophomore, then strictly as a split end his last two seasons . . . His 68 receptions as a junior for 738 yards and 10 touchdowns broke all Xavier season records . . . His career totals of 120 catches for 1685 yards and 14 touchdowns are also Xavier records.

PERSONAL: Attended Catholic Central High School in Steubenville, Ohio . . . A physical education major at Xavier and a high 'B' student . . . Married (Claudia).

ALLISON, BUFORD NEEDHAM (Butch)

6-3, 250, Guard, 1st Year, Missouri
Born October 29, 1944, at Fort Worth, Texas
Joined Saints: Trade with Baltimore, 1967

PRO: Showed plenty of promise in rookie season with Baltimore, but actually saw no regular season action due to the unexpected return of Alex Sandusky from retirement . . . A No. 2 choice of both the Baltimore Colts and the Oakland Raiders . . . Came to Saints in the trade that also brought Gary Cuozzo in exchange for two draft choices and Bill Curry.

COLLEGE: Played both offense and defense at Missouri as a sophomore, then played strictly on defense in 1964 as a junior . . . Allison was moved to the offensive platoon as a senior and distinguished himself at tackle . . . He was named to several all-America teams and was also an all-Big Eight selection.

PERSONAL: Son of a Baptist minister . . . Attended Parkview High School in Springfield, Missouri . . . Married (Elizabeth).

BROWN, JOHN DANIEL

6-3, 230, Linebacker, 1st Year, South Carolina State
Born January 29, 1945 at Orangeburg, So. Carolina
Joined Saints: Free Agent, 1967

COLLEGE: A four-year letterman, three-year All-Conference performer at South Carolina State . . . Captain of team three years, Most Valuable Player one year, and defensive Player of the Year as a senior . . . Played both offensive center and defensive tackle at South Carolina State.

PERSONAL: Married . . . Plans to further his education at South Carolina State in Orangeburg.

BURRIS, JAMES ENGLAND (Bo)

6-3, 195, Defensive Back, 1st Year, Houston
Born October 16, 1944, at Luling, Texas
Joined Saints: Draft Choice #2a, 1967

COLLEGE: An outstanding athlete at Houston, where he set virtually every total offense and passing offense record of that University . . . Played safety regularly as a sophomore, then switched to quarterback his last two seasons . . . In 1966, he was tenth in the nation in total offense with 1846 yards and 26 touchdowns accounted for on 274 plays. His career totals show 440 passes attempted, 203 passes completed, 3248 yards gained passing and 35 touchdown passes . . . As a senior, 3248 yards gained passing and 35 touchdown passes . . . Burris was the starting South quarterback in the North-South game in Miami after his senior season . . . An extremely versatile athlete, he high jumped 6-4 in high school track competition . . . Also played right field on the Houston baseball team . . . Shoots golf in the 70s.

PERSONAL: Lettered in football, baseball and track at Brazos Port High School in Freeport, Texas . . . Majored in general business administration . . . Single.

CAPSHAW, ROY MIKE (Mike)

6-5, 260, Offensive Tackle, 1st Year, Abilene Christian
Born November 17, 1944, at Poplar Bluff, Missouri
Joined Saints: Trade with Rams, 1967

PRO: Drafted in 10th round by Los Angeles Rams in 1966 . . . Was a member of the Rams "ready reserve" squad in 1966 . . . Came to Saints in July, 1967, in a trade for defensive end Dave Cahill.

COLLEGE: Lettered three years as a two-way tackle performer at Abilene Christian . . . Won honorable mention all-Texas and all-Southland Conference honors.

PERSONAL: Attended Ruston, La., high school, where he was a football and baseball star . . . a physical education major at Abilene Christian . . . Married (Carolyn) . . . Now calls Little Rock, Arkansas, home.

CARR, TOM W.

6-3, 264, Defensive End, 1st Year, Morgan State
Born April 6, 1942, at Philadelphia, Penn.
Joined Saints: Free Agent, 1967

PRO: Drafted by Baltimore in 1965, but played semi-pro ball with Philadelphia Bulldogs in 1965 after failing to make Colts' squad . . . Also had shot with Washington in 1966.

COLLEGE: A four-year letterman at Morgan State . . . All-conference in 1964.

PERSONAL: A sociology student at Morgan State . . . Single . . . Still calls Philadelphia home.

CARR, WILLIAM CURTIS III (Bill)

6-4, 215, Center, 1st Year, Florida
Born November 29, 1945, at Gainesville, Florida
Joined Saints: Draft Choice #4b, 1967

COLLEGE: Captain of the Florida offensive team . . . Started 32 straight games in his Florida career . . . Played more minutes in his three-year stint than anyone else on the Florida team . . . Named to the Pro Scouts and Time All-America team in 1966 . . . Also an all-Southeastern Conference selection in his senior season . . . Played in the 1967 Senior Bowl.

PERSONAL: Attended Pensacola, Fla., high school . . . Majored in Spanish at Florida . . . Hopes to follow business in law after pro career . . . President of the Florida University chapter of the Fellowship of Christian Athletes . . . Single.

CORTEZ, BRUCE

5-11½, 175, Defensive Back, 1st Year, Parsons College
Born October 29, 1945, at Carthage, Missouri
Joined Saints: Draft Choice #16b, 1967

COLLEGE: Extremely fast, having run the 120-yard high hurdles in the excellent time of :13.7 . . . Attended Joplin Junior College before transferring to Parsons for his junior season.

PERSONAL: Attended Carthage, Mo., high school . . . A physical education major at Parsons . . . Single.

DOUGLAS, JOHN

6-1, 195, Defensive Halfback, 1st Year, Texas Southern
Born January 12, 1945, at Fort Worth, Texas
Joined Saints: Draft Choice #5b, 1967

COLLEGE: A four-year star at Texas Southern University . . . Played both defense and offense his freshman and sophomore seasons and then played quarterback exclusively as a junior and senior . . . A two-time all-Southwestern Athletic Conference selection . . . Led the SWAC in passing offense the last two seasons, second in total offense in the SWAC in 1966 . . . Also lettered in baseball two years at TSU as a third baseman and outfielder . . . His 1965 passing totals show 60 completions in 174 attempts for 872 yards and five touchdowns . . . In 1966, he completed 73 passes in 195 attempts for and even 1200 yards and then added 140 yards rushing for a grand total of 1340 yards, or 134.0 yards total offense per game . . . In spite of his impressive offensive credentials, he will be given a shot as a defensive back with the Saints.

PERSONAL: Graduate of Como high school in Fort Worth, Texas . . . A physical education major at TSU . . . Married (Patricia) . . . One son (one year old).

DURKEE, CHARLES M.

5-11, 165, Kicker, 1st Year, Oklahoma State
Born June 25, 1944, at Tulsa, Oklahoma
Joined Saints: Free Agent, 1967

PRO: Last cut of the Dallas Cowboys in 1966 after being signed as a free agent . . . Signed by Saints in their June, 1967, tryout camp.

COLLEGE: A three-year letterman at Oklahoma State . . . Even though a kicking specialist only, he was named most valuable player of 1965 OSU team.

PERSONAL: A personnel management major at Oklahoma State . . . Married (Kitty) . . . Now calls Hurst, Texas, home.

GILLIAM, JOHN RALLY

6-1, 190, Offensive Halfback, 1st Year, South Carolina State
Born August 7, 1945, at Greenwood, South Carolina
Joined Saints: Draft Choice #2b, 1967

COLLEGE: A four-year letterman in football and a three-year letterman in track at South Carolina State . . . All-conference three years, as an end as a sophomore, as a flanker as a junior and as a tailback in his senior season . . . Also played deep safety on defense and on the return teams . . . His 1966 statistics show 68 rushes for 424 yards and five TD's, four pass receptions for 72 yards, 11 kickoff returns for 350 yards and nine punt returns for 194 yards . . . Two of his kickoff returns were for touchdowns, the longest 98 yards . . . Has run the 100 in :09.5 in track.

PERSONAL: Graduated from Brewer high school in Greenwood, South Carolina . . . Majored in physical education at South Carolina State . . . Married at Christmas time, 1966 (Fannie).

GREENWOOD, SYLVESTER (Syl)

6-1, 235, Linebacker, 1st Year, Fresno State
Born January 18, 1945 at Shelby, Arkansas
Joined Saints: Free Agent, 1967

COLLEGE: First attended San Francisco State, and then Fresno State where he was an All-Conference and Little All-Coast selection.

PERSONAL: Single . . . Plans to further his education at Fresno State . . . Now calls Richmond, Calif. home.

GROSSNICKLE, GARY EDWARD (Skip)

6-1, 185, Defensive Back, 1st Year, Missouri
Born September 23, 1944, at Kirksville, Missouri
Joined Saints: Draft Choice #13b, 1967

COLLEGE: A regular safety with the Tigers for the last two seasons . . . Intercepted nine passes in his career at Missouri, running them back 121 yards . . . Named to the all-Big Eight team as a senior.

PERSONAL: Attended Kirksville, Mo., high school . . . Majored in education at Missouri . . . Married (Daisy).

HART, BEN

6-2, 205, Split End, 1st Year, Oklahoma
Born August 19, 1945, at Oklahoma City, Oklahoma
Joined Saints: Draft Choice #3c, 1967

COLLEGE: A versatile three-year letterman at Oklahoma . . . Played end as a sophomore and senior and halfback as a junior . . . Was an all-Big Eight end in 1966 . . . Also played briefly on the Sooner basketball team . . . Played in the 1967 Hula Bowl game . . . Set Oklahoma school records for receiving yardage in a single season (565 in 1966) and a career (915 yards) . . . His catch and run on a 95-yard touchdown play in the 1965 Gator Bowl game is an all-time, all-bowl record for longest touchdown catch.

PERSONAL: Quarterbacked his Douglass High School (Oklahoma City) team to a state runnerup finish . . . An all-state quarterback in high school . . . Likes to energize self with rock-and-roll music before a football game . . . Majored in physical education at Oklahoma . . . Single.

HARVEY, GEORGE

6-4, 245, Guard, 1st Year, Kansas
Born August 18, 1945, at Topeka, Kansas
Joined Saints: Draft Choice #6a, 1967

COLLEGE: A starting linebacker all three varsity seasons at Kansas . . . Named to the second team all-Big Eight as a senior . . . Played in both the East-West Shrine game and the Hula Bowl . . .

PERSONAL: Played football, basketball and track at Parsons, Kansas, high school . . . Majored in social studies at Kansas . . . Married (Madlyn).

HESTER, JIM

6-4, 225, Tight End, 1st Year, North Dakota
Born October 13, 1944, at Rock Island, Ill.
Joined Saints: Draft Choice #14a, 1967

COLLEGE: An all-conference basketball selection two years while at North Dakota, but played only his last year in football at North Dakota, because of scholastic difficulties . . . Last year caught 31 passes for 385 yards and three touchdowns.

PERSONAL: Graduated from Central High School in Davenport, Iowa . . . An all-state end twice in high school, also all-state in basketball . . . A social work major at North Dakota . . . Married (Sandra).

KELLEY, LESLIE HOWARD (Les)

6-3½, 223, Fullback, 1st Year, Alabama
Born December 9, 1944, at Cullman, Alabama
Joined Saints. Draft Choice #1b, 1967

COLLEGE: Rushed 94 times for 309 yards and four touchdowns in 1966 on Alabama's Sugar Bowl championship team . . . Career totals show 860 yards on 234 carries in three seasons . . . Also caught four passes for 46 yards in Alabama career . . . Was one of the outstanding players in Alabama's 1966 Orange Bowl triumph over Nebraska and then scored first touchdown in Alabama's Sugar Bowl victory over the same team in 1967 . . .

PERSONAL: Attended Cullman, Ala., high school . . . A commerce and business administration major at Alabama . . . Intends to work in real estate . . . Single.

KENDRICKS, MARV

6-2½, 200, Defensive Back, 1st Year, Utah State
Born August 3, 1944, at Los Angeles, California
Joined Saints: Free Agent, 1967

PRO: Had tryout with Dallas Cowboys in 1966.

COLLEGE: A three-year letterman at Utah State as a defensive back and a flanker.

PERSONAL: A sociology major at Utah State . . . Single . . . Still calls Los Angeles home.

McCALL, DONALD CHARLES (Don)

5-11, 195, Offensive Halfback, 1st Year, Southern California
Born September 21, 1944, at Birmingham, Alabama
Joined Saints: Draft Choice #5a, 1967

COLLEGE: The leading rusher for USC's Rose Bowl team that lost a 14-13 squeaker to Purdue . . . McCall was also the top rusher in that Rose Bowl game with 92 yards gained . . . Playing behind Mike Garrett as a junior, he carried only 38 times for 125 yards, but he upped this to 127 carries for 560 yards in 1966, even though he played in only seven games before being injured . . . Also attended Los Angeles City College for two years, where he once gained 232 yards rushing in one game.

PERSONAL: A graduate of Fremont City High School in Los Angeles . . . Majoring in public administration at USC . . . Single.

McKELVEY, BOB

6-2, 200, Linebacker, 1st Year, Northwestern
Born January 22, 1945, at Belleville, Illinois
Joined Saints: Draft Choice #7b, 1967

COLLEGE: A three-year regular at fullback for the Northwestern Wildcats . . . He broke the Northwestern record for the most rushing attempts in a career, 326 . . . Also set a one-game Northwestern standard with 35 carries against Iowa in 1965 . . . Played in the Blue-Gray game in 1966.

PERSONAL: A graduate of Belleville Township High School in Illinois . . . A political science major at Illinois . . . Married (Sally).

McNEILL, THOMAS GREGG

6-0, 190, Punter, 1st Year, Stephen F. Austin
Born August 12, 1942, at Rockford, Illinois
Joined Saints: Free Agent, 1967

COLLEGE: Played at Wharton Junior College and then at Stephen F. Austin college as a punting specialist . . . Signed by Saints in their tryout camp in June, 1967.

PERSONAL: Also played basketball three years in college . . . Did not graduate, but plans to continue his education . . . Single . . . Now calls Houston, Texas, home.

NEVETT, ELIJAH

6-0, 185, Flanker, 1st Year, Clark College
Born April 28, 1944, at Bessemer, Alabama
Joined Saints: Free Agent, 1967

COLLEGE: A four-year letterman at Clark College, where he played wingback and safety . . . All-conference three years and Clark's most valuable back three years . . . Team captain two years . . . A real "flyer" who won three track letters as a sprinter in college.

PERSONAL: An art major at Clark . . . Single . . . Now calls Atlanta, Ga., home.

RHODEN, MARCUS

5-9, 165, Flanker, 1st Year, Mississippi State
Born January 22, 1946, at Macclenny, Florida
Joined Saints: Draft Choice #16a, 1967

COLLEGE: One of the most versatile athletes in the Saint's 1967 draft . . . A former Southeastern Conference 100-yard dash duty running back at the start of his college career, he tended to become more of a receiver and a return specialist as he went along . . . He scored 16 touchdowns in his career at Mississippi State . . . In 1965, he returned 19 punts for a fantastic 21.7-yard average, including three touchdown runbacks . . . In 1966, he led the nation in kickoff returns with 26 for 572 yards . . . He had a 95-yard runback against Southern Mississippi in 1966 . . . He was named to the all-SEC sophomore team and was second all-SEC in 1965 . . . His best time in the 100 is a sizzling :09.5, best in the 220 is :21.6 . . . Played in the Blue-Gray game in Montgomery in 1966.

PERSONAL: Track and football star at Baker County High School in Macclenny, Florida . . . Majored in business at Mississippi State . . . Single.

ROBERTSON, ROOSEVELT (Sweet Rose)

6-3, 205, Tight End, 1st Year, North Carolina College
March 27, 1943, at Rock Hill, South Carolina
Joined Saints: Draft Choice #10b, 1967

COLLEGE: Attended Indiana University for two years, then transferred to North Carolina College, where he lettered for two years . . . He caught 21 passes for 292 yards and seven touchdowns in 1966 to lead his team.

PERSONAL: Graduate of William Penn High School in High Point, North Carolina . . . A physical education major at North Carolina College . . . Married (Mary).

ROSS, EUGENE

6-2, 189, Defensive Back, 1st Year, Oklahoma
Born January 6, 1945, at Clinton, Oklahoma
Joined Saints: Draft Choice #9b, 1967

COLLEGE: A three-year regular as a defensive back for the Sooners . . . Called the surest tackler in the Oklahoma defensive secondary, which was second nationally in 1966 . . . Ross won the UG award in 1966 . . . UG award goes to the outstanding Oklahoma defensive player . . . Named to the all-Big Eight team as a safety in 1966.

PERSONAL: All-State end at Clinton High School in Oklahoma, where he won the American Legion citizenship award . . . Majored in business at Oklahoma . . . Married.

ROWE, DAVID

6-6, 265, Defensive Tackle, 1st Year, Penn State
Born June 20, 1945, at Neptune, New Jersey
Joined Saints: Draft Choice #2c, 1967

COLLEGE: A two-year starter at Penn State, where he seemed to develop most rapidly in his final season . . . Was named to the first team all-Pennsylvania college team in 1966 (includes over 100 colleges) and to the second all-East team . . . Played in both the East-West Shrine game and the Hula Bowl.

PERSONAL: Graduate of Deptford, N. J., high school . . . A health and physical education major at Penn State . . . Intends to teach after his pro-football days . . . Married (Faith) after the 1966 football season.

SILER, BARRY

6-5, 234, Linebacker, 1st Year, Albion College
Born May 1, 1945, at Albion, Michigan
Joined Saints: Draft Choice #8b, 1967

COLLEGE: A four-year star at Albion, where he was both a linebacker and a defensive end and a co-captain in his senior season . . . Albion won the conference championship three times and Siler was all-conference all three years . . . He was named to the all-Michigan College team in 1966 and was named the most valuable player in the Michigan Intercollegiate Athletic Association in 1966 . . . Was also a standout on the Albion golf team.

PERSONAL: A graduate of Albion High School . . . A chemistry and math major at Albion, where he was a 'B' student . . . Single.

SMITH, BRUCE

6-4, 210, Split End, 1st Year, Brigham Young
 Born January 5, 1943, at Salt Lake City, Utah
 Joined Saints: Free Agent, 1967

COLLEGE: An all-Western Athletic Conference star at Brigham Young in 1964 . . . Won three letters at BYU . . . Has played Continental League football last two seasons.

PERSONAL: Earned degree in physical education at Brigham Young . . . Married (Pamela) . . . Now calls Richland, Washington, home.

STANGLE, TOM

6-4, 255, Offensive Tackle, 1st Year, Dayton
 Born February 24, 1945, at Dayton, Ohio
 Joined Saints: Draft Choice #4c, 1967

COLLEGE: A three-year starter and letterman at Dayton . . . Played in the East-West Shrine game in 1966 . . .

PERSONAL: Most valuable lineman at Chaminade High School in Dayton . . . Also put the shot in track in high school . . . An industrial technology major at Dayton . . . Single.

STETTER, GEORGE

5-11, 180, Defensive Back, 1st Year, Virginia
 Born April 29, 1945, at Neptune, New Jersey
 Joined Saints: Draft Choice #14b, 1967

COLLEGE: A three-year letterman at Virginia, even though he was not recruited to play football and did not play frosh ball . . . His roommate, quarterback Bob Davis, talked him into coming out as a sophomore and Stetter not only made the team, but led it in interceptions every year for a career total of 12 . . . Named to the all-Virginia college team and to the second all-Atlantic Coast conference team . . . Played all the way on defense in the North-South game in Miami after his senior season.

PERSONAL: A decathlon champion at Asbury Park, N. J., high school . . . A finance major at Virginia . . . Single.

WIDBY, RON

6-4, 210, Punter, 1st Year, Tennessee
 Born March 9, 1945, at Knoxville, Tennessee
 Joined Saints: Draft Choice #4a, 1967

COLLEGE: A three-year punting specialist for the Volunteers, Widby made his biggest sports name at Tennessee as a basketball star . . . In 1966-67, he was the most valuable player and high scorer in the Southeastern Conference and was named to AP's second all-America team . . . He scored 50 points vs. Louisiana State in his final regular-season game as a senior to run his total to 576 points . . . He won eight letters at Tennessee, three in football and basketball and one each in baseball and golf . . . He topped the nation in punting as a senior with a 43.8 average on 48 kicks . . . Had the unusual distinction of playing with the Volunteers in the Sugar Bowl basketball tournament and then rushing to Jacksonville for the Gator Bowl football game . . . As a junior, he averaged 42.8 yards on 20 punts and, as a sophomore, 41.1 yards on 74 punts.

PERSONAL: Played quarterback in high school . . . A physical education major at Tennessee . . . Married (Joan).

WILLIAMS, DELANO R. (Del)

6-2½, 245, Guard, 1st Year, Florida State
 Born November 9, 1945, at Live Oak, Florida
 Joined Saints: Draft Choice #3b, 1967

COLLEGE: Started every varsity game for Florida State in his three years on the team . . . Played tackle for two years, guard his senior year . . . Named to the second-All America offensive team in 1966 by AP . . . Played in the East-West Shrine Game right after his team played in the 1966 Sun Bowl game.

PERSONAL: Graduate of Suwanee High School in Live Oak, Florida, where he also participated in track . . . Majored in criminology at Florida State . . . Married (Diane).

WOOD, CHARLES HENRY (Bo)

6-3, 225, Linebacker, 1st Year, North Carolina

Born November 3, 1945, at Barrington, New Jersey

Joined Saints: Draft Choice #6b, 1967

COLLEGE: Although he will be given a shot as a linebacker with the Saints, he played as a defensive end only at North Carolina, where he lettered three years and where he started the last two years.

PERSONAL: Majored in physical education at North Carolina . . . Single.

1967 SAINTS TRAINING CAMP

To prepare for their first season of competition in the National Football League, the New Orleans Saints opened training camp on July 1 at beautiful California Western University in San Diego, Calif. The eager Saints were the first pro team into training camp with some 76 players (mostly rookies) reporting on that first day of July.

The Saints veterans reported to Coach Tom Fears and his staff on July 8.

Two-a-day workouts and numerous scrimmages were held during the first month of practice as the Saints, players and staff alike, seemed dedicated to becoming a competitive, representative team early in their NFL days.

With the sites of their pre-season games spanning the country (Anaheim, Portland, Ore., Charleston, S. C., with dates in between in Baton Rouge and Shreveport), the Saints will remain in California until Aug. 25 when they journey to Portland. After the game there on the 26th, they return to Louisiana to finish their pre-season training at St. Paul's in Covington—just an hour's drive from New Orleans.

Thereafter, the Saints will work at their new facilities on David Drive at Airline Highway in Jefferson Parish.

**THE LEAGUE IN WHICH
THE SAINTS WILL PLAY**



THE NATIONAL FOOTBALL LEAGUE

- NFL Directory, 1966 Standings, Super Bowl..... 64
- NFL Championship History..... 65
- Pro Bowl, Playoff Bowl, All-Star Game History..... 66
- NFL Attendance Story, NFL No. 1 Draft Choices..... 67
- Individual League Statistical Leaders by Years..... 68-71
- 1966 Individual League Statistical Leaders..... 72-73
- 1966 All-NFL Selections..... 74
- 1967 NFL Schedule..... 75-76
- NFL Public Relations Directors Guide..... 77
- THE CAPITOL DIVISION OPPONENTS OF THE SAINTS**
- Dallas, Philadelphia, Washington..... 78-80
- THE CENTURY DIVISION OPPONENTS OF THE SAINTS**
- Cleveland, New York, Pittsburgh, St. Louis..... 81-84
- THE COASTAL DIVISION OPPONENTS OF THE SAINTS**
- Atlanta, Baltimore, Los Angeles, San Francisco..... 85-88
- THE CENTRAL DIVISION MEMBERS OF THE N.F.L.**
- Chicago, Detroit, Green Bay, Minnesota..... 89-92

NATIONAL FOOTBALL LEAGUE DIRECTORY

1 Rockefeller Plaza
New York, N. Y. 10020
212-JU 2-5265

Commissioner Pete Rozelle
President Art Modell
Tower B, Cleveland Stadium
Cleveland, Ohio 44114
Telephone: (216) 861-3400
Director of Public Relations Jim Kensil
Director of Information Don Weiss
Director of Officials Mark Duncan

FINAL N.F.L. STANDINGS, 1966

EASTERN CONFERENCE							WESTERN CONFERENCE						
	W	L	T	PCT.	PTS.	OP.		W	L	T	PCT.	PTS.	OP.
Dallas	10	3	1	.769	445	239	Green Bay	12	2	0	.857	335	163
Cleveland	9	5	0	.643	403	259	Baltimore	9	5	0	.643	314	226
Philadelphia	9	5	0	.643	326	340	Los Angeles	8	6	0	.571	289	212
St. Louis	8	5	1	.615	264	265	San Francisco	6	6	2	.500	320	325
Washington	7	7	0	.500	351	355	Chicago	5	7	2	.417	234	272
Pittsburgh	5	8	1	.385	316	347	Detroit	4	9	1	.308	206	317
Atlanta	3	11	0	.214	204	437	Minnesota	4	9	1	.308	292	304
New York	1	12	1	.077	263	501							

FIRST ANNUAL N.F.L.—A.F.L. CHAMPIONSHIP GAME

January 15, 1967

The first annual N.F.L. Championship Game, popularly called the "Super Bowl," was staged January 15, 1967, before 61,946 fans at Los Angeles' Memorial Coliseum. The N.F.L. and its champion, the Green Bay Packers, prevailed over the A.F.L. champion, the Kansas City Chiefs, 35-10, with a stirring and powerful second-half blitzkrieg settling the issue. Each winning Packer player received \$15,000 for his efforts while each losing Chief received \$7,500.

Green Bay (N.F.L.)	7	7	14	7	—	35
Kansas City (A.F.L.)	0	10	0	0	—	10

Scoring Summary:	G.B.	K.C.
GREEN BAY—McGee (37 pass from Starr) Chandler kick	7	0
KANSAS CITY—McClinton (7 pass from Dawson) Mercer kick	7	7
GREEN BAY—Taylor (14 run) Chandler kick	14	7
KANSAS CITY—FG Mercer 31	14	10
GREEN BAY—Pitts (5 run) Chandler kick	21	10
GREEN BAY—McGee (13 pass from Starr) Chandler kick	28	10
GREEN BAY—Pitts (1 run) Chandler kick	35	10

N. F. L. CHAMPIONSHIP GAMES AT A GLANCE

Year	Date	Winner—Share	Loser—Share	Score	Site	Attendance
1966	Jan. 1	Packers (\$9,813.63)	Cowboys (\$6,527.85)	34-27	Dallas	74,152
1965	Jan. 2	Packers (\$7,819.91)	Browns (\$5,288.83)	23-12	Green Bay	50,777
1964	Dec. 27	Browns (\$8,052)	Colts (\$5,571)	27-0	Cleveland	79,544
1963	Dec. 29	Bears (\$5,899)	Giants (\$4,218)	14-10	Chicago	45,801
1962	Dec. 30	Packers (\$5,888)	Giants (\$4,166)	16-7	New York	64,892
1961	Dec. 31	Packers (\$5,195)	Giants (\$3,339)	37-0	Green Bay	39,029
1960	Dec. 26	Eagles (\$5,116)	Packers (\$3,105)	17-13	Philadelphia	67,325
1959	Dec. 27	Colts (\$4,674)	Giants (\$3,083)	31-16	Baltimore	57,545
1958	Dec. 28	Colts (\$4,718)	Giants (\$3,111)	23-17*	New York	64,185
1957	Dec. 29	Lions (\$4,295)	Browns (\$2,750)	59-14	Detroit	55,263
1956	Dec. 30	Giants (\$3,779)	Bears (\$2,485)	47-7	New York	56,836
1955	Dec. 26	Browns (\$3,508)	Rams (\$2,316)	38-14	Los Angeles	85,693
1954	Dec. 26	Browns (\$2,478)	Lions (\$1,585)	56-10	Cleveland	43,827
1953	Dec. 27	Lions (\$2,424)	Browns (\$1,654)	17-16	Detroit	54,577
1952	Dec. 28	Lions (\$2,274)	Browns (\$1,712)	17-7	Cleveland	50,934
1951	Dec. 23	Rams (\$2,108)	Browns (\$1,483)	24-17	Los Angeles	57,522
1950	Dec. 24	Browns (\$1,113)	Rams (\$686)	30-28	Cleveland	29,751
1949	Dec. 18	Eagles (\$1,094)	Rams (\$739)	14-0	Los Angeles	27,980
1948	Dec. 19	Eagles (\$1,540)	Cardinals (\$874)	7-0	Philadelphia	36,309
1947	Dec. 28	Cardinals (\$1,132)	Eagles (\$754)	28-12	Chicago	30,759
1946	Dec. 15	Bears (\$1,975)	Giants (\$1,295)	24-14	New York	58,346
1945	Dec. 16	Rams (\$1,469)	Redskins (\$902)	15-14	Cleveland	32,178
1944	Dec. 17	Packers (\$1,449)	Giants (\$814)	14-7	New York	46,016
1943	Dec. 26	Bears (\$1,146)	Redskins (\$765)	41-21	Chicago	34,320
1942	Dec. 13	Redskins (\$965)	Bears (\$637)	14-6	Washington	36,006
1941	Dec. 21	Bears (\$430)	Giants (\$288)	37-9	Chicago	13,341
1940	Dec. 8	Bears (\$873)	Redskins (\$606)	73-0	Washington	36,034
1939	Dec. 10	Packers (\$850)	Giants (\$650)	27-0	Milwaukee	32,279
1938	Dec. 11	Giants (\$900)	Packers (\$700)	23-17	New York	48,120
1937	Dec. 12	Redskins (\$300)	Bears (\$250)	28-21	Chicago	15,870
1936	Dec. 13	Packers (\$540)	Redskins (\$400)	21-6	New York	29,545
1935	Dec. 15	Lions (\$300)	Giants (\$200)	26-7	Detroit	15,000
1934	Dec. 9	Giants (\$621)	Bears (\$414.02)	30-13	New York	35,059
1933	Dec. 17	Bears (\$210.34)	Giants (\$140.22)	23-21	Chicago	26,000

(Shares 1935 through 1939 are estimated.)

*(Sudden death—8:15.)

POST-SEASON GAME RESULTS

Pro Bowl

*1938—N. Y. Giants, 13; All-Stars, 10	*1961—West. Conf., 35; East Conf., 31
*1939—Green Bay, 16; All-Stars, 7	*1962—West. Conf., 31; East. Conf., 30
*1940—Bears, 28; All-Stars, 14	*1963—East. Conf., 30; West. Conf., 20
†1941—Bears, 35; All-Stars, 24	*1964—West. Conf., 31; East. Conf., 17
‡1942—All-Stars, 17; Washington, 14	*1965—West. Conf., 34; East. Conf., 14
*1951—Am. Conf., 28; Nat. Conf., 27	*1966—East. Conf., 36; West. Conf., 7
*1952—Nat. Conf., 30; Am. Conf., 13	*1967—East Conf., 20; West Conf. 10
*1953—Nat. Conf., 27; Am. Conf., 7	
*1954—East. Conf., 20; West. Conf., 9	
*1955—West. Conf., 26; East. Conf., 19	
*1956—East. Conf., 31; West. Conf. 30	
*1957—West. Conf., 19; East. Conf., 10	
*1958—West. Conf., 26; East. Conf., 7	
*1959—East. Conf., 28; West. Conf., 21	
*1960—West. Conf., 38; East. Conf., 21	

Playoff Bowl—Miami, Florida

1961—Detroit, 17; Cleveland, 16
1962—Detroit, 38; Philadelphia, 10
1963—Detroit, 17; Pittsburgh, 10
1964—Green Bay, 40; Cleveland, 23
1965—St. Louis, 25; Green Bay, 17
1966—Baltimore, 35; Dallas, 3
1967—Baltimore 20, Philadelphia 14

*-Played in Los Angeles. †-Played in New York. ‡-Played in Philadelphia

ALL-STAR GAME RESULTS

Chicago

1934—Chicago Bears, 0; All-Stars, 0	1950—All-Stars, 17; Philadelphia, 7
1935—Chicago Bears 5; All-Stars, 0	1951—Cleveland, 33; All-Stars, 0
1936—Detroit, 7; All-Stars, 7	1952—Los Angeles, 10; All-Stars, 7
1937—All-Stars, 6; Green Bay, 0	1953—Detroit, 24; All-Stars, 10
1938—All-Stars, 28; Washington, 16	1954—Detroit, 31; All-Stars, 6
1939—New York, 9; All-Stars, 0	1955—All-Stars, 30; Cleveland, 27
1940—Green Bay, 45; All-Stars, 28	1956—Cleveland, 26; All-Stars, 0
1941—Chicago Bears, 37; All-Stars, 13	1957—New York, 22; All-Stars, 12
1942—Chicago Bears, 21; All-Stars, 0	1958—All-Stars, 35; Detroit, 19
1943—All-Stars, 27; Washington, 7	1959—Baltimore, 29; All-Stars, 0
1944—Chicago Bears, 24; All-Stars, 21	1960—Baltimore, 32; All-Stars, 7
1945—Green Bay, 19; All-Stars, 7	1961—Philadelphia, 28; All-Stars, 14
1946—All-Stars, 16; Los Angeles, 0	1962—Green Bay, 42; All-Stars, 20
1947—All-Stars, 16; Chicago Bears, 0	1963—All-Stars, 20; Green Bay, 17
1948—Chicago Cards, 28; All-Stars, 0	1964—Chicago, 28; All-Stars, 17
1949—Philadelphia. 38; All Stars. 0	1965—Cleveland, 24; All-Stars, 16
	1966—Green Bay 38, All-Stars 0

N. F. L. ATTENDANCE STORY

Year	Season Att.	No. Games	Avg. Game	Year	Season Att.	No. Games	Avg. Game
1966	5,337,038	105	50,829	1949	1,391,735	60	23,196
1965	4,634,021	98	47,286	1948	1,525,243	60	25,421
1964	4,563,049	98	46,562	1947	1,837,437	60	30,624
1963	4,163,643	98	42,527	1946	1,732,135	55	31,493
1962	4,003,421	98	40,851	1945	1,270,401	50	25,406
1961	3,986,159	98	40,675	1944	1,019,649	50	20,393
1960	3,128,296	78	40,106	1943	969,128	40	24,228
1959	3,140,409	72	43,617	1942	887,920	55	16,144
1958	3,006,124	72	41,752	1941	1,108,615	55	20,157
1957	2,836,318	72	39,393	1940	1,063,025	55	19,328
1956	2,551,263	72	35,434	1939	1,071,200	55	19,476
1955	2,521,836	72	35,025	1938	937,197	55	17,040
1954	2,190,571	72	30,424	1937	963,039	55	17,510
1953	2,164,585	72	30,064	1936	816,007	54	15,111
1952	2,052,126	72	28,502	1935	638,178	54	11,818
1951	1,913,019	72	26,569	1934	492,684	60	8,211
1950	1,977,753	78	25,356				

N. F. L. No. 1 DRAFT CHOICES

(Selections 1947 through 1958 are bonus choices)

Season	Club	Player	Pos.	School
1967	Baltimore	Bubba Smith	DT	Michigan State
1966	Atlanta	Tommy Nobis	LB	Texas
1965	New York	Tucker Frederickson	B	Auburn
1964	San Francisco	Dave Parks	E	Texas Tech
1963	Los Angeles	Terry Baker	QB	Oregon State
1962	Washington	Ernie Davis	B	Syracuse
1961	Minnesota	Tommy Mason	B	Tulane
1960	Los Angeles	Billy Cannon	B	LSU
1959	Green Bay	Randy Duncan	QB	Iowa
1958	Chicago Cards	King Hill	QB	Rice
1957	Green Bay	Paul Hornung	B	Notre Dame
1956	Pittsburgh	Gary Glick	B	Colorado A&M
1955	Baltimore	George Shaw	QB	Oregon
1954	Cleveland	Bobby Garrett	QB	Stanford
1953	San Francisco	Harry Babcock	E	Georgia
1952	Los Angeles	Bill Wade	QB	Vanderbilt
1951	New York	Kyle Rote	B	SMU
1950	Detroit	Leon Hart	E	Notre Dame
1949	Philadelphia	Chuck Bednarik	C	Pennsylvania
1948	Washington	Harry Gilmer	QB	Alabama
1947	Chicago Bears	Bob Fenimore	B	Oklahoma A&M
1946	Boston Yanks	Frank Dancewicz	QB	Notre Dame
1945	Chicago Cards	Charley Trippi	B	Georgia
1944	Chicago Cards	Pat Harder	B	Wisconsin
1943	Detroit	Frank Sinkwich	B	Georgia
1942	Pittsburgh	Bill Dudley	B	Virginia
1941	Philadelphia	Tom Harmon	B	Michigan
1940	Chicago Cards	George Cafego	B	Tennessee
1939	Chicago Cards	Ki Aldrich	C	TCU
1938	Cleveland	Corbett Davis	B	Indiana
1937	Philadelphia	Sam Francis	B	Nebraska
1936	Philadelphia	Jay Berwanger	B	Chicago U.

LEAGUE LEADERS BY YEARS

SCORING

		TDs	PATs	FGs	Total
1932	Dutch Clark, Portsmouth	4	6	3	39
1933	Ken Strong, Giants	6	13	5	64
	Glenn Presnell, Portsmouth	6	10	6	64
1934	Jack Manders, Bears	3	31	10	79
1935	Dutch Clark, Lions	6	16	1	55
1936	Dutch Clark, Lions	7	19	4	73
1937	Jack Manders, Bears	5	15	8	69
1938	Clark Hinkle, Packers	7	7	3	58
1939	Andy Farkas, Redskins	11	2	0	68
1940	Don Hutson, Packers	7	15	0	57
1941	Don Hutson, Packers	12	20	0	95
1942	Don Hutson, Packers	17	33	1	138
1943	Don Hutson, Packers	12	36	3	117
1944	Don Hutson, Packers	9	31	0	85
1945	Steve Van Buren, Eagles	18	2	0	110
1946	Ted Fritsch, Packers	10	13	9	100
1947	Pat Harder, Cards	7	39	7	102
1948	Pat Harder, Cards	6	53	7	110
1949	Pat Harder, Cards	8	45	3	102
	Gene Roberts, Giants	17	0	0	102
1950	Doak Walker, Lions	11	38	8	128
1951	Elroy Hirsch, Rams	17	0	0	102
1952	Gordy Soltau, 49ers	7	14	6	94
1953	Gordy Soltau, 49ers	6	48	10	114
1954	Bob Watson, Eagles	11	36	4	114
1955	Doak Walker, Lions	7	27	9	96
1956	Bobby Layne, Lions	5	33	12	99
1957	Sam Baker, Redskins	1	29	14	77
	Lou Groza, Browns	0	32	15	77
1958	James Brown, Browns	18	0	0	108
1959	Paul Hornung, Packers	7	31	7	94
1960	Paul Hornung, Packers	15	41	15	*176
1961	Paul Hornung, Packers	10	41	15	146
1962	Jim Taylor, Packers	19	0	0	114
1963	Don Chandler, Giants	0	52	18	106
1964	Lenny Moore, Colts	20	0	0	120
1965	Gale Sayers, Bears	22	0	0	132
1966	Bruce Gossett, Rams	0	29	28	113

* League Record

PASSING

	Passes	Comp.	Yds.	TDs	Intcp.	
1932	Arnie Herber, Packers	101	37	639	9	9
1933	Harry Newman, Giants	132	53	963	8	17
1934	Arnie Herber, Packers	115	42	799	8	12
1935	Ed Danowski, Giants	113	57	795	9	9
1936	Arnie Herber, Packers	173	77	1,239	9	13
1937	Sam Baugh, Redskins	171	81	1,127	7	14
1938	Ed Danowski, Giants	129	70	848	8	8
1939	Parker Hall, Rams	208	106	1,227	9	13
1940	Sam Baugh, Redskins	117	111	1,367	12	10
1941	Cecil Isbell, Packers	206	117	1,479	15	11
1942	Cecil Isbell, Packers	268	146	2,021	24	14
1943	Sam Baugh, Redskins	239	133	1,754	23	19
1944	Frank Filchock, Redskins	147	84	1,139	13	9
1945	Sam Baugh, Redskins	182	128	1,669	11	4
1946	Bob Waterfield, Rams	251	127	1,747	18	17

1947	Sam Baugh, Redskins	354	210	2,938	25	15
1948	Tommy Thompson, Eagles	246	141	1,965	25	11
1949	Sam Baugh, Redskins	255	145	1,703	18	14
1950	Norm Van Brocklin, Rams	233	127	2,061	18	14
1951	Bob Waterfield, Rams	176	88	1,566	13	10
1952	Norm Van Brocklin, Rams	205	113	1,736	14	17
1953	Otto Graham, Browns	258	167	2,722	11	9
1954	Norm Van Brocklin, Rams	260	139	2,637	13	21
1955	Otto Graham, Browns	185	98	1,721	15	8
1956	Ed Brown, Bears	168	96	1,667	11	12
1957	Tommy O'Connell, Browns	110	63	1,229	9	8
1958	Eddie LeBaron, Redskins	145	79	1,365	11	10
1959	John Unitas, Colts	367	193	2,899	32	14
1960	Milt Plum, Browns	250	151	2,297	21	5
1961	Milt Plum, Browns	302	177	2,416	18	10
1962	Bart Starr, Packers	285	178	2,438	12	9
1963	Y. A. Tittle, Giants	367	221	3,145	*36	14
1964	Bart Starr, Packers	272	163	2,144	15	4
1965	Rudy Bukich, Bears	312	176	2,641	20	9
1966	Bart Starr, Packers	251	156	2,257	14	3

RECEIVING

	Caught	Yards	Avg. Gain	TDs	
1932	Luke Johnson, Bears	24	321	13.4	2
1933	John Kelley, Brooklyn	21	219	10.4	3
1934	Joe Carter, Eagles	16	237	14.8	3
1935	Tod Goodwin, Giants	26	432	16.6	4
1936	Don Hutson, Packers	34	526	15.5	9
1937	Don Hutson, Packers	41	552	13.5	7
1938	Gaynell Tinsley, Cards	41	516	12.6	1
1939	Don Hutson, Packers	34	846	24.9	6
1940	Don Looney, Eagles	58	707	12.2	4
1941	Don Hutson, Packers	58	738	12.7	10
1942	Don Hutson, Packers	74	1,711	16.4	*17
1943	Don Hutson, Packers	46	776	16.5	11
1944	Don Hutson, Packers	58	866	14.6	9
1945	Don Hutson, Packers	47	834	17.1	9
1946	Jim Benton, Rams	63	981	15.5	6
1947	Jim Kearne, Bears	64	910	14.2	10
1948	Tom Fears, Rams	51	698	13.7	4
1949	Tom Fears, Rams	77	1,013	13.2	9
1950	Tom Fears, Rams	84	1,116	13.3	7
1951	Elroy Hirsch, Rams	66	*1,495	22.7	*17
1952	Mac Speedie, Browns	62	911	14.7	5
1953	Pete Pihos, Eagles	63	1,049	16.7	10
1954	Pete Pihos, Eagles	60	872	14.5	10
	Billy Wilson, 49ers	60	830	13.8	5
1955	Pete Pihos, Eagles	62	864	13.9	7
1956	Billy Wilson, 49ers	60	839	14.8	5
1957	Billy Wilson, 49ers	52	757	14.6	6
1958	Raymond Berry, Colts	56	794	14.2	9
	Pete Retzlaff, Eagles	56	766	13.7	2
1959	Raymond Berry, Colts	66	959	14.5	14
1960	Raymond Barry, Colts	74	1,298	17.5	10
1961	Jim Phillips, Rams	78	1,092	14.0	5
1962	Bobby Mitchell, Redskins	72	1,384	19.2	11
1963	Bobby Joe Conrad, Cardinals	71	967	13.2	10
1964	Johnny Morris, Bears	*93	1,200	12.9	10
1965	David Parks, 49ers	80	1,344	16.8	12
1966	Charley Taylor, Redskins	72	1,119	15.5	12

* League Record

RUSHING

		Attempts	Yds.	Avg.	TDs
1932	Bob Campiglio, Stapleton	104	504	4.8	..
1933	Cliff Battles, Redskins	146	737	5.1	..
1934	Beattie Feathers, Bears	101	1,004	9.9	..
1935	Doug Russell, Cards	140	499	3.6	..
1936	Tuffy Leemans, Giants	206	830	4.0	..
1937	Cliff Battles, Redskins	216	874	4.1	..
1938	Whizzer White, Steelers	152	567	3.7	4
1939	Bill Osmanski, Bears	121	699	5.8	7
1940	Whizzer White, Lions	146	514	3.5	5
1941	Clarence Manders, Brooklyn	111	486	4.4	7
1942	Bill Dudley, Steelers	162	696	4.3	5
1943	Bill Paschal, Giants	147	572	3.9	10
1944	Bill Paschal, Giants	196	737	3.8	9
1945	Steve Van Buren, Eagles	143	832	5.8	15
1946	Bill Dudley, Steelers	146	604	4.1	3
1947	Steve Van Buren, Eagles	217	1,008	4.6	14
1948	Steve Van Buren, Eagles	201	945	4.7	10
1949	Steve Van Buren, Eagles	263	1,146	4.4	11
1950	Marion Motley, Browns	140	810	5.8	3
1951	Eddie Price, Giants	271	971	3.6	7
1952	Dan Towler, Rams	156	894	5.7	10
1953	Joe Perry, 49ers	192	1,018	5.3	10
1954	Joe Perry, 49ers	173	1,049	6.1	8
1955	Alan Ameche, Colts	213	961	4.5	9
1956	Rick Casares, Bears	234	1,126	4.8	12
1957	James Brown, Browns	202	942	4.7	9
1959	James Brown, Browns	290	1,329	4.6	14
1959	James Brown, Browns	290	1,329	4.6	14
1960	James Brown, Browns	215	1,257	5.8	9
1961	James Brown, Browns	*305	1,408	4.6	8
1962	Jim Taylor, Packers	272	1,474	5.4	*19
1963	James Brown, Browns	291	1,863	6.4	12
1964	James Brown, Browns	280	1,446	5.2	7
1965	James Brown, Browns	289	1,544	5.3	17
1966	Gale Sayers, Bears	229	1,231	5.4	8

* League Record

FIELD GOALS

1933	Jack Manders, Bears	6	1949	Cliff Patton, Eagles	9
	Glenn Presnell, Portsmouth	6		Bob Waterfield, Rams	9
1934	Jack Manders, Bears	10	1950	Lou Groza, Browns	13
1935	Armand Niccolai, Steelers	6	1951	Bob Waterfield, Rams	13
	Bill Smith, Cardinals	6	1952	Lou Groza, Browns	19
1936	Jack Manders, Bears	7	1953	Lou Groza, Browns	23
	Armand Niccolai, Steelers	7	1954	Lou Groza, Browns	16
1937	Jack Manders, Bears	8	1955	Fred Cone, Packers	16
1938	Ward Cuff, Giants	5	1956	Sam Baker, Redskins	17
	Ralph Kercheval, Brooklyn	5	1957	Lou Groza, Browns	15
1939	Ward Cuff, Giants	7	1958	Paige Cothren, Rams	14
1940	Clark Hinkle, Packers	9		Tom Miner, Steelers	14
1941	Clark Hinkle, Packers	6	1959	Pat Summerall, Giants	20
1942	Bill Daddio, Cardinals	5	1960	Tommy Davis, 49ers	19
1943	Don Hutson, Packers	3	1961	Steve Myhra, Colts	21
1944	Ken Strong, Giants	6	1962	Lou Michaels, Steelers	26
1945	Joe Aguirre, Redskins	7	1963	Jim Martin, Colts	24
1946	Ted Fritsch, Packers	9	1964	Jim Bakken, St. Louis	25
1947	Pat Harder, Cardinals	7	1965	Fred Cox, Vikings	23
1948	Cliff Patton, Eagles	8	1966	Bruce Gossett, Rams	*28

* League Record

INTERCEPTIONS

		No.	Yards	Longest
1941	Marshall Goldberg, Cardinals	7	54	16
1942	Bulldog Turner, Bears	8	96	42
1943	Sam Baugh, Redskins	11	112	23
1944	Howie Livingston, Giants	9	172	40
1945	Roy Zimmerman, Eagles	7	90	23
1946	Bill Dudley, Steelers	10	242	80
1947	Frank Reagan, Giants	10	203	71
1948	Dan Sandifer, Redskins	13	258	54
1949	Bob Nussbaumer, Cardinals	12	157	68
1950	Orban Sanders, Yanks	13	199	29
1951	Otto Schnellbacher, Giants	11	194	46
1952	Dick Lane, Rams	*14	*298	80
1953	Jack Christiansen, Lions	12	238	92
1954	Dick Lane, Cardinals	10	181	64
1955	Willard Sherman, Rams	11	101	36
1956	Lindon Crow, Cardinals	11	170	42
	Milt Davis, Colts	10	219	75
1957	Jack Christiansen, Lions	10	137	52
	Jack Butler, Steelers	10	85	20
1958	Jim Patton, Giants	11	183	42
	Dean Derby, Steelers	7	127	24
1959	Milt Davis, Colts	7	119	57
	Don Shinnick, Colts	7	70	23
1960	Dave Baker, 49ers	10	96	28
	Jerry Norton, Cardinals	10	96	26
1961	Dick Lynch, Giants	9	60	36
1962	Willie Wood, Packers	9	132	37
1963	Dick Lynch, Giants	9	251	82
	Roosevelt Taylor, Bears	9	172	46
1964	Paul Krause, Redskins	12	140	35
1965	Bobby Boyd, Colts	9	78	24
1966	Larry Wilson, Cardinals	10	180	91

* League Record

KICKOFF RETURNS

		No.	Yards	Avg.
1942	Marshall Goldberg, Cardinals	15	393	26.2
1943	Ken Heineman, Dodgers	16	442	27.6
1944	Bob Thurbon, Steelers	12	291	24.2
1945	Steve Van Buren, Eagles	13	373	28.7
1946	Abe Karnofsky, Yanks	21	599	28.5
1947	Eddie Saenz, Redskins	29	797	27.4
1948	Joe Scott, Giants	20	569	28.5
1949	Don Doll, Lions	21	536	25.5
1950	V. T. Smith, Rams	22	742	33.7
1951	Lynn Chandnois, Steelers	12	390	32.5
1952	Lynn Chandnois, Steelers	17	599	35.2
1953	Joe Arenas, 49ers	16	551	34.4
1954	Billy Reynolds, Browns	14	413	29.5
1955	Al Carmichael, Packers	14	418	29.9
1956	Tom Wilson, Rams	15	477	31.8
1957	Jon Arnett, Rams	18	504	28.0
1958	Ollie Matson, Cardinals	14	497	35.5
1959	Abe Woodson, 49ers	13	382	29.4
1960	Tom Moore, Packers	12	397	33.1
1961	Dick Bass, Rams	23	698	30.3
1962	Abe Woodson, 49ers	37	1,157	31.3
1963	Abe Woodson, 49ers	29	935	32.2
1964	Clarence Childs, Giants	34	987	29.0
1965	Tom Watkins, Lions	17	584	34.4
1966	Gale Sayers, Bears	23	718	31.2

1966 N. F. L. INDIVIDUAL LEADERS

RUSHING

Player, Team—	Atts.	Yards	Avg.	Long	Tds.
Gale Sayers, Chicago	229	*1231	5.4	t58	8
Leroy Kelly, Cleveland	209	1141	*5.5	*t70	*15
Dick Bass, Los Angeles	248	1090	4.4	50	8
Bill Brown, Minnesota	*251	829	3.3	t33	6
Ken Willard, San Francisco	191	763	4.0	49	5
Dan Reeves, Dallas	175	757	4.3	t67	8
Ernie Green, Cleveland	144	750	5.2	35	3
Don Perkins, Dallas	186	726	3.9	24	8
Junior Coffey, Atlanta	199	722	3.6	37	4
Jim Taylor, Green Bay	204	705	3.5	19	4

PASSING

	Atts.	Comp.	Pct. Comp.	Yds. Gain.	Tds.	Had Int.
Bart Starr, Green Bay	251	156	*62.2	2257	14	*3
Sonny Jurgensen, Washington	*436	*254	58.3	*3209	28	19
Frank Ryan, Cleveland	382	200	52.4	2974	*29	14
Don Meredith, Dallas	344	177	51.5	2805	24	12
Johnny Unitas, Baltimore	348	195	56.0	2748	22	24
Fran Tarkenton, Minnesota	358	192	53.6	2561	17	16
Roman Gabriel, Los Angeles	397	217	54.7	2540	10	16
John Brodie, San Francisco	427	232	54.3	2810	16	22
Charley Johnson, St. Louis	205	103	50.2	1334	10	11
Milt Plum, Detroit	146	82	56.2	943	4	13

PASS RECEIVING

	No.	Yards	Avg.	Long	Tds.
Charley Taylor, Washington	*72	1119	15.5	t86	12
Pat Studstill, Detroit	67	*1266	18.9	*t99	5
Dave Parks, San Francisco	66	974	14.8	t65	5
Bob Hayes, Dallas	64	1232	19.3	t95	*13
Tom Moore, Los Angeles	60	433	7.2	t30	3
Bob Mitchell, Washington	58	905	15.6	t70	9
Gary Collins, Cleveland	56	946	16.9	54	12
Raymond Berry, Baltimore	56	786	14.0	t40	7
Tommy McDonald, Los Angeles	55	714	13.0	62	2
Jerry Smith, Washington	54	686	12.7	35	6
Tom Nowatzke, Detroit	54	316	5.9	25	1

INTERCEPTIONS

	No.	Yards	Avg.	Long	Tds.
Larry Wilson, St. Louis	*10	180	18.0	t91	*2
Joe Scarpati, Philadelphia	8	*182	22.8	32	0
Ross Fichtner, Cleveland	8	152	19.0	58	1
Clancy Williams, Los Angeles	8	97	12.1	t32	1
Mike Howell, Cleveland	8	62	7.8	29	0
Brig Owens, Washington	7	165	23.6	t60	1
Bob Boyd, Baltimore	6	114	19.0	t37	1
Carl Lockhart, New York	6	20	3.3	14	0
Nine tied at	5				

* Led league in 1966

1966 N. F. L. INDIVIDUAL LEADERS

PUNTING

	No.	Avg. Dist.	Long	Blkd.
David Lee, Baltimore	49	*45.6	64	0
Jon Kilgore, Los Angeles	71	42.8	58	0
Pat Richter, Washington	68	42.4	60	0
Frank Lambert, Pittsburgh	78	42.1	63	0
Bobby Joe Green, Chicago	*80	42.0	69	0
Tommy Davis, San Francisco	63	41.4	60	0
Sam Baker, Philadelphia	42	41.1	63	0
Pat Studstill, Detroit	72	41.1	66	0
Bobby Walden, Minnesota	60	41.1	*70	0
Don Chandler, Green Bay	60	40.9	58	0

PUNT RETURNS

	No.	Yards	Avg.	Long	Tds.
Johnny Roland, St. Louis	20	221	*11.1	*t86	*1
Tom Vaughn, Detroit	18	179	9.9	63	0
Alvin Haymond, Baltimore	*40	*347	8.7	64	0
Jim Stiger, Los Angeles	33	259	7.8	49	0
Carl Lockhart, New York	17	113	6.6	21	0
Kermit Alexander, San Francisco	30	198	6.6	t44	*1
Bob Hayes, Dallas	17	106	6.2	18	0
Rickie Harris, Washington	18	108	6.0	t52	*1
Mel Renfro, Dallas	21	123	5.9	38	0
Jon Arnett, Chicago	15	58	3.9	20	0

KICKOFF RETURNS

	No.	Yards	Avg.	Long	Tds.
Gale Sayers, Chicago	23	718	*31.2	t93	*2
Roy Shivers, St. Louis	27	762	28.2	*t94	1
Timmy Brown, Philadelphia	20	562	28.1	t93	*2
Clancy Williams, Los Angeles	15	420	28.0	81	0
Dick Gordon, Chicago	19	521	27.4	*94	0
Jim Butler, Pittsburgh	17	454	26.7	t93	1
Kermit Alexander, San Francisco	37	984	26.6	56	0
Tom Vaughn, Detroit	23	595	25.9	63	0
Mel Renfro, Dallas	19	487	25.6	t87	1
Lenny Moore, Baltimore	18	453	25.2	54	0

SCORING

	TD	XP	FG	Total
Bruce Gossett, Los Angeles	0	29- 29	*28- *49	*113
Danny Villanueva, Dallas	0	*56- *56	17- 31	107
Charley Gogolak, Washington	0	39- 41	22- 34	105
Lou Michaels, Baltimore	0	35- 36	21- 39	98
Mike Clark, Pittsburgh	0	34- 34	21- 32	97
Jim Bakken, St. Louis	0	27- 28	23- 40	96
Leroy Kelly, Cleveland	16	0	0	96
Dan Reeves, Dallas	16	0	0	96
Sam Baker, Philadelphia	0	38- 39	18- 25	92
Charley Taylor, Washington	15	0	0	90

* Led league in 1966

1966 ALL LEAGUE SELECTIONS

(Selected by Associated Press, Newspaper Enterprises Association and United Press International)

OFFENSE

*Bob Hayes, Dallas (AP, UPI)	Split end
Dave Parks, San Francisco (NEA)	Split end
John Mackey, Baltimore (AP, NEA, UPI)	Tight end
Bob Brown, Philadelphia (AP, NEA, UPI)	Tackle
Forrest Gregg, Green Bay (AP, NEA, UPI)	Tackle
Jerry Kramer, Green Bay (AP, UPI)	Guard
John Thomas, San Francisco (AP, NEA)	Guard
John Gordy, Detroit (UPI)	Guard
Gene Hickerson, Cleveland (NEA)	Guard
Mick Tingelhoff, Minnesota (AP, NEA, UPI)	Center
Bart Starr, Green Bay (AP, NEA, UPI)	Quarterback
Leroy Kelly, Cleveland (AP, NEA, UPI)	Running back
Gale Sayers, Chicago (AP, NEA, UPI)	Running back
Pat Studstill, Detroit (AP, UPI)	Flanker
*Bob Hayes, Dallas (NEA)	Flanker

DEFENSE

Willie Davis, Green Bay (AP, NEA, UPI)	End
Dave Jones, Los Angeles (AP, NEA, UPI)	End
Bob Lilly, Dallas (AP, NEA, UPI)	Tackle
Merlin Olsen, Los Angeles (AP, NEA, UPI)	Tackle
Ray Nitschke, Green Bay (AP, NEA, UPI)	Middle LB
Chuck Howley, Dallas (AP, NEA, UPI)	Outside LB
Lee Roy Caffey, Green Bay (AP, UPI)	Outside LB
Maxie Baughan, Los Angeles (NEA)	Outside LB
Herb Adderley, Green Bay (AP, NEA, UPI)	Halfback
Cornell Green, Dallas (AP, NEA)	Halfback
Bob Boyd, Baltimore (UPI)	Halfback
Larry Wilson, St. Louis (AP, NEA, UPI)	Safety
Willie Wood, Green Bay (AP, NEA, UPI)	Safety

*Note Hayes selected at two positions.

N. F. L. 1967 REGULAR SEASON SCHEDULE

(All times local, Daylight or Standard)

SUNDAY, SEPT. 17 (First Week)

Atlanta at Baltimore	2:00
Chicago at Pittsburgh	1:30
Dallas at Cleveland	1:30
Detroit at Green Bay	1:00
Los Angeles at New Orleans	1:30
New York at St. Louis	1:00
San Francisco at Minnesota	1:30
Washington at Philadelphia	1:30

FRIDAY, SEPT. 22 (Second Week)

Minnesota at Los Angeles	8:00
--------------------------	------

SUNDAY, SEPT. 24

Atlanta at San Francisco	1:00
Baltimore at Philadelphia	1:30
Chicago at Green Bay	1:00
Cleveland at Detroit	1:30
New York at Dallas	1:30
St. Louis at Pittsburgh	1:30
Washington at New Orleans	1:30

SUNDAY, OCT. 1 (Third Week)

Atlanta vs. Green Bay at Milwaukee	1:00
Chicago at Minnesota	1:30
Cleveland at New Orleans	1:30
Detroit at St. Louis	1:00
Los Angeles at Dallas	1:30
New York at Washington	1:30
Pittsburgh at Philadelphia	1:30
San Francisco at Baltimore	2:00

SATURDAY, OCT. 7 (Fourth Week)

Pittsburgh at Cleveland	8:00
-------------------------	------

SUNDAY, OCT. 8

Baltimore at Chicago	1:00
Dallas at Washington	1:30
Green Bay at Detroit	1:30
New Orleans at New York	1:30
Philadelphia at Atlanta	1:30
St. Louis at Minnesota	1:30
San Francisco at Los Angeles	1:00

SUNDAY, OCT. 15 (Fifth Week)

Detroit at Chicago	1:00
Los Angeles at Baltimore	2:00
Minnesota vs. Green Bay at Milwaukee	1:00
New Orleans at Dallas	1:30
New York at Pittsburgh	1:30
St. Louis at Cleveland	1:30
San Francisco at Philadelphia	1:30
Washington at Atlanta	1:30

SUNDAY, OCT. 22 (Sixth Week)

Atlanta at Detroit	1:30
Baltimore at Minnesota	1:30
Chicago at Cleveland	1:30
Dallas at Pittsburgh	1:30
Green Bay at New York	1:30
New Orleans at San Francisco	1:00
Philadelphia at St. Louis	1:00
Washington at Los Angeles	1:00

SUNDAY, OCT. 29 (Seventh Week)

Baltimore at Washington	1:30
Cleveland at New York	1:30
Dallas at Philadelphia	1:30
Detroit at San Francisco	1:00
Los Angeles at Chicago	1:00
Minnesota at Atlanta	1:30
Pittsburgh at New Orleans	1:30

MONDAY, OCT. 30

Green Bay at St. Louis	8:30
------------------------	------

SUNDAY, NOV. 5 (Eighth Week)

Atlanta at Dallas	1:30
Chicago at Detroit	1:30
Cleveland at Pittsburgh	1:30
Green Bay at Baltimore	2:00
Los Angeles at San Francisco	1:00
New York at Minnesota	3:00
Philadelphia at New Orleans	1:00
St. Louis at Washington	1:15

SUNDAY, NOV. 12 (Ninth Week)

Baltimore at Atlanta1:30
 Cleveland vs. Green Bay
 at Milwaukee3:00
 Dallas at New Orleans1:00
 Detroit at Minnesota1:30
 New York at Chicago1:00
 Philadelphia at Los Angeles1:00
 Pittsburgh at St. Louis1:00
 San Francisco at Washington1:15

SUNDAY, NOV. 19 (Tenth Week)

Detroit at Baltimore2:00
 Los Angeles at Atlanta1:30
 Minnesota at Cleveland1:30
 New Orleans at Philadelphia1:15
 Pittsburgh at New York1:30
 St. Louis at Chicago1:00
 San Francisco at Green Bay1:00
 Washington at Dallas3:00

**THURSDAY, NOV. 23 (Eleventh Week)
(Thanksgiving)**

Los Angeles at Detroit12:15
 St. Louis at Dallas5:00

SUNDAY, NOV. 26

Atlanta at New Orleans1:00
 Baltimore at San Francisco1:00
 Green Bay at Chicago1:00
 Minnesota at Pittsburgh1:30
 Philadelphia at New York1:30
 Washington at Cleveland1:30

SUNDAY, DEC. 3 (Twelfth Week)

Atlanta at Los Angeles1:00
 Chicago at San Francisco1:00
 Dallas at Baltimore2:00
 Green Bay at Minnesota1:30
 New Orleans at St. Louis1:00
 New York at Cleveland1:30
 Philadelphia at Washington1:15
 Pittsburgh at Detroit1:30

SATURDAY, DEC. 9 (Thirteenth Week)

Green Bay at Los Angeles1:00

SUNDAY, DEC. 10

Cleveland at St. Louis3:00
 Detroit at New York1:30
 Minnesota at Chicago1:00
 New Orleans at Baltimore2:00
 Philadelphia at Dallas1:00
 San Francisco at Atlanta1:30
 Washington at Pittsburgh1:30

SATURDAY, DEC. 16 (Fourteenth Week)

Dallas at San Francisco1:00

SUNDAY, DEC. 17

Baltimore at Los Angeles1:00
 Chicago at Atlanta1:30
 Cleveland at Philadelphia1:15
 Minnesota at Detroit1:30
 New Orleans at Washington1:15
 Pittsburgh at Green Bay1:00
 St. Louis at New York1:30

SATURDAY, DEC. 23

Western Conference Playoff (Coastal vs. Central) at Central Division Champion.

SUNDAY, DEC. 24

Eastern Conference Playoff (Capitol vs. Century) at Capitol Division Champion.

SUNDAY, DEC. 31

NFL Championship game in Home City of Western Conference Champion.

NFL PUBLIC RELATIONS DIRECTORS**ATLANTA FALCONS**

Jan Van Duser
 521 Capitol Ave. S.W. 30312
 Office: (404) 688-8684
 Home: (404) 451-9486

BALTIMORE COLTS

Jim Walker
 600 N. Howard St. 21201
 Office: (301) 685-4521
 Home: (301) 665-3864

CHICAGO BEARS

Dan Desmond
 173 W. Madison St. 60602
 Office: (312) 332-5400
 Home: (312) 465-8218

CLEVELAND BROWNS

Nate Wallack
 Municipal Stadium 44114
 Office: (216) 696-5555
 Home: (216) 464-1685

DALLAS COWBOYS

Curt Mosher
 6116 N. Central Expwy. 75206
 Office: (214) EM 9-3211
 (214) AD 1-2916

DETROIT LIONS

Lyll Smith
 1401 Michigan Ave. 48216
 Office: (313) 965-6644
 Home (313) MI 6-1345
 Asst: Elliott Trumbull
 Home: (313) MI 7-4598

GREEN BAY PACKERS

Chuck Lane
 1265 Highland Ave. 54305
 Office: (414) 494-2351
 Home: (414) 494-2572

LOS ANGELES RAMS

Jack Teele
 10271 West Pico Blvd., L.A. 90064
 Office: (213) 277-4700
 Home: (213) 431-2841
 Asst.: Jerry Wilcox

MINNESOTA VIKINGS

Bill McGrane
 7809 Southtown Cntr,
 Bloomington 55431
 Office (612) 866-3601
 Home: (612) 935-5092

NEW ORLEANS SAINTS

Donald R. Smith
 944 St. Charles Ave., N.O. 70130
 Office: (504) 524-1421
 Home: (504) 834-5528
 Asst.: Miss Pat Cross
 Home: (504) 525-5611

NEW YORK GIANTS

Don Smith
 10 Columbus Circle 10019
 Office: (212) JU 2-7272
 Home: (212) 886-2720
 Asst.: Ed Croke
 Home: (914) 631-6520

PHILADELPHIA EAGLES

Jim Gallagher
 30th & Market Sts. 19104
 Office: (215) EV 2-5000
 Home: (215) 279-7989
 Asst: Jim Heffernan
 Home: (215) To be changed

PITTSBURGH STEELERS

Ed Kiely
 139 Sixth St. 15222
 Hotel Roosevelt
 Office: (412) 391-1200
 Home: (412) 242-0534

SAN FRANCISCO '49ers

George McFadden
 Suite 300—1255 Post St. 94109
 Office: (415) 771-1149
 Home: (415) 593-2744

ST. LOUIS CARDINALS

Joe Pollack
 200 Stadium Plaza 63102
 Office: (314) 685-6400
 Home: (314) JE 5-3321
 Asst.: Mrs. Lori Greenstein
 Home: (314) TW 2-5189

WASHINGTON REDSKINS

Joe F. Blair
 Ninth St., at H, N.W. 1
 Office: (202) DI 7-6140
 Home: (301) WA 7-0479

EASTERN CONFERENCE, CAPITOL DIVISION

DALLAS COWBOYS

Oct. 15—At Dallas
Nov. 12—At New Orleans

6116 North Central Expressway
Dallas, Texas 75206

Office Phone: (214) EM 9-3211

Colors: Royal Blue, Metallic Blue & White

Cotton Bowl Capacity: 75,504

1966 Attendance: 473,373 Average: 67,625

Entered NFL: 1960



COACH LANDRY

QB MEREDITH

STAFF

President: Texas E. Schramm
Asst. Gen. Mgr.: Al Ward
P. R. Director: Curt Mosher
Dir. Player Personnel: Gil Brandt
Radio Team: Bill Mercer
Radio Station: KLIF-Dallas; KFJZ-Ft. Worth, and 70 on network

Head Coach: Tom Landry (8 yrs. 35-36-5)
Assistants: Ermal Allen, Ernie Stautner, Jim Myers, Jerry Tubbs, Dick Nolan
Trainers: Don Cochren, Larry Gardner
Equipment Mgr.: Jack Eskbridge

1966 STATISTICAL LEADERS

RUSHING	NFL Rank	Att.	Yds.	Avg.	Long	TD
Reeves	6	175	757	4.3	67t	8
Perkins	8	186	726	3.9	24	8
Meredith	36	38	242	6.4	22	5

PASSING	NFL Rank	Att.	Comp.	Pct.	Gain	TD	Long	Int.	Int. Pct.
Meredith	4	344	177	51.5	2805	24	95t	12	3.5
Rhome		36	21	58.3	253	0	47	1	2.8

RECEIVING	NFL Rank	No.	Yds.	Avg.	Long	TD
Hayes	4	64	1232	19.3	95t	13*
Reeves	24 TIE	41	557	13.6	51t	8
Gent	51 TIE	27	474	17.6	84t	1

PUNTING—Villanueva (13th NFL)—65 punts for 39.2 avg.; 58 long; 1 blocked
INTERCEPTIONS—Green (18th Tie NFL)—4 for 88 yds.; 41t long; 1 TD
PUNT RETURNS—Hayes (7th NFL)—17 for 106 yds.; 6.2 avg.; 18 long; 0 TD
KICKOFF RETURNS—Renfro (9th NFL)—19 for 487 yds.; 25.6 avg.; 87t long; 1 TD
SCORING—Villanueva (2nd NFL)—56*-56* XP; 17-31 FG; 107 Pts.

*High in NFL, 1966

1966 RESULTS (10-3-1)

52 NEW YORK	7	23 Philadelphia	24
28 MINNESOTA	17	31 WASHINGTON	30
47 ATLANTA	14	20 PITTSBURGH	7
56 PHILA.	7	26 CLEVELAND	14
10 St. Louis	10	31 ST. LOUIS	17
21 Cleveland	30	31 Washington	34
52 PITTSBURGH	21	17 NEW YORK	7

GAMES WON IN CAPS

1967 SCHEDULE

9-17 at Cleveland	11- 5 ATLANTA
9-24 NEW YORK	11-12 at New Orlns.
10- 1 LOS ANGELES	11-19 WASHINGTON
10- 8 at Washington	11-23 ST. LOUIS
10-14 NEW ORLEANS	12- 3 at Baltimore
10-22 at Pittsburgh	12-10 PHILA.
10-29 at Phila.	12-16 at San Fran.

HOME GAMES IN CAPS

EASTERN CONFERENCE, CAPITOL DIVISION

PHILADELPHIA EAGLES

Nov. 5—At New Orleans
Nov. 19—At Philadelphia

30th and Market Sts.

Philadelphia, Pa. 19104

Office Phone: (215) EV2-5000

Colors: Kelly Green and White

Franklin Field Capacity: 60,658

1966 Attendance: 408,619 Average: 58,374

Entered NFL: 1933



COACH KUHARICH

QB SNEAD

STAFF

President: Jerry Wolman
Gen. Mgr.: Joseph L. Kuharich
P. R. Director: Jim Gallagher
Dir. of Promotions: Jim Heffernan
Dir. Player Personnel: Bill Daddio
Radio Team: Andy Musser, Charlie Gauer
Radio Station: WCAU and 15 on network

Head Coach: Joseph L. Kuharich (3 yrs., 20-22-0)
Assistants: Dick Evans, Herman Ball, Fred Bruney, Dick Stanfel, Mike Nixon
Trainer: G. E. (Moose) Detty
Equipment Mgr.: John Robel

1966 STATISTICAL LEADERS

RUSHING	NFL Rank	Att.	Yds.	Avg.	Long	TD
T. Brown	12	161	548	3.4	24	3
Gros	20	102	396	3.9	26	7
Woodeshick	28	85	330	3.9	21	4

PASSING	NFL Rank	Att.	Comp.	Pct.	Gain	TD	Long	Int.	Int. Pct.
Snead	16	226	103	45.6	1275	8	48	11	4.9
K. Hill		97	53	54.6	571	5	30	7	7.2

RECEIVING	NFL Rank	No.	Yds.	Avg.	Long	TD
Retzlaff	27	40	653	16.3	40	6
T. Brown	36	33	371	11.2	39	3
F. Hill	44TIE	29	304	10.5	36	0

PUNTING—Baker (7th NFL)—42 punts for 41.1 avg.; 63 long.
INTERCEPTIONS—Scarpati (2nd Tie NFL)—8 for 182* yds.; 32 long; 0 TD
PUNT RETURNS—None in Upper NFL Rankings
KICKOFF RETURNS—T. Brown (3rd NFL)—20 for 562 yds.; 28.1 avg.; 93t long; 2* TD
SCORING—Baker (9th NFL)—38-39 XP; 18-25 FG; 92 Pts.

*High in NFL, 1966

1966 RESULTS (9-5-0)

13 St. Louis	16	13 Washington	27
23 ATLANTA	10	24 DALLAS	23
35 NEW YORK	17	7 Cleveland	27
10 St. Louis	41	35 SAN FRAN.	34
7 Dallas	56	27 PITTSBURGH	23
31 PITTSBURGH	14	33 CLEVELAND	21
31 NEW YORK	3	37 WASHINGTON	28

GAMES WON IN CAPS

1967 SCHEDULE

9-17 WASHINGTON	11- 5 at New Orlns.
9-24 BALTIMORE	11-12 at Los Ang.
10- 1 PITTSBURGH	11-19 NEW ORLEANS
10- 8 at Atlanta	11-26 at New York
10-15 SAN FRAN.	12- 3 at Washington
10-22 at St. Louis	12-10 at Dallas
10-29 DALLAS	12-17 CLEVELAND

HOME GAMES IN CAPS

EASTERN CONFERENCE, CAPITOL DIVISION

WASHINGTON REDSKINS

Sept. 24—At New Orleans
Dec. 17—At Washington

Connecticut Ave. and L Street, NW
Washington, D. C.

Office Phone: (202) 296-1456
Colors: Burgundy and Gold

Dist. of Columbia Stad. Capacity: 50,000
1966 Attendance: 348,044 Average: 49,720
Entered NFL: 1932



COACH GRAHAM QB JURGENSEN

STAFF

Pres. Emeritus: George P. Marshall
President: Edward B. Williams
Gen. Mgr.: Otto Graham
P. R. Director: Joe F. Blair
Dir. Player Pers.: Tim Temerario
Radio Team: Steve Gilmartin,
Mal Campbell

Coach: Otto Graham (1 yr., 7-7-0)
Assistants: Ed Hughes, Mike Scarry,
Don Doll, Ray Renfro, Mike McCormack
Trainer: Joe Kuczo
Equipment Mgr.: Kelly Miller

Radio Station: WMAL and 39 on network

1966 STATISTICAL LEADERS

RUSHING		NFL Rank	Att.	Yds.	Avg.	Long	TD
Whitfield	17	93	472	5.1	63t	2	
Taylor	34	87	262	3.0	24	3	
Thurlow	35	80	260	3.3	20	0	

PASSING		NFL Rank	Att.	Comp.	Pct.	Gain	TD	Long	Int.	Int. Pct.
Jurgensen	2	436*	254*	58.3	3209*	28	86t	19	4.4	

RECEIVING		NFL Rank	No.	Yds.	Avg.	Long	TD
Taylor	1	72*	1119	15.5	86t	12	
Mitchell	6	58	905	15.6	70t	9	
Smith	10TIE	54	686	12.7	35	6	

PUNTING—Richter (3rd NFL)—68 punts for 42.4 avg.; 60 long
INTERCEPTIONS—Owens (6th NFL)—7 for 165 yds.; 60t long; 1 TD
PUNT RETURNS—Harris (8th NFL)—18 for 108 yds.; 6.0 avg.; 52t long; 1 TD
KICKOFF RETURNS—Mazurek (12th NFL)—21 for 505 yds.; 24.0 avg.; 58 long; 0 TD
SCORING—C. Gogolak (3rd NFL)—39-41 XP; 22-34 FG; 105 Pts.
*High in NFL, 1966

1966 RESULTS (7-7-0)

14	Cleveland	38	27	PHILA.	13
7	St. Louis	23	10	Baltimore	37
23	PITTSBURGH	27	30	Dallas	31
34	PITTSBURGH	10	3	Cleveland	14
33	ATLANTA	20	72	NEW YORK	41
10	New York	13	34	DALLAS	31
26	ST. LOUIS	20	28	Philadelphia	37

GAMES WON IN CAPS

1967 SCHEDULE

9-17 at Phila.	11- 5 ST. LOUIS
9-24 at New Orlns	11-12 SAN FRAN.
10- 1 NEW YORK	11-19 at Dallas
10- 8 DALLAS	11-26 at Cleveland
10-15 at Atlanta	12- 3 PHILA.
10-22 at Los Angeles	12-10 at Pittsburgh
10-29 BALTIMORE	12-17 NEW ORLNS.

HOME GAMES IN CAPS

EASTERN CONFERENCE, CENTURY DIVISION

CLEVELAND BROWNS

Oct. 1—At New Orleans

Cleveland Municipal Stadium
Cleveland, Ohio 44114

Office Phone: (216) 696-5555

Colors: Seal Brown, Orange, White

Municipal Stadium Capacity 79,282

1966 Attendance: 544,250 Average: 77,750

Entered NFL: 1950



COACH COLLIER QB RYAN

STAFF

President: Arthur B. Modell
Gen. Mgr.: Harold Sauerbrei
Asst to Pres.: Ben Flieger
P. R. Director: Nate Wallack
Dir. Player Personnel: Paul Bixler
Radio Team: Gib Shanley, Jim Graner
Radio Station: WERE

Head Coach: Blanton Collier (4th year,
40-15-1)

Assistants: Howard Brinker, Fritz Heisler,
Dub Jones, Bob Nussbaumer,
Nick Skorich, Ed Ulinski

Trainer: Leo Murphy

Equipment Mgr.: Morrie Kono

1966 STATISTICAL LEADERS

RUSHING		NFL Rank	Att.	Yds.	Avg.	Long	TD
Kelly	2	209	1141	5.5*	70t*	15*	
Green	7	144	750	5.2	35	3	
Ryan	51	36	156	4.3	17	0	

PASSING		NFL Rank	Att.	Comp.	Pct.	Gain	TD	Long	Int.	Int. Pct.
Ryan	3	382	200	52.4	2974	29*	54	14	3.7	
Ninowski		18	11	61.1	175	4	44t	1	5.6	

RECEIVING		NFL Rank	No.	Yds.	Avg.	Long	TD
Collins	7TIE	56	946	16.9	54	12	
Green	19TIE	45	445	9.9	31t	6	
Warfield	32	36	741	20.6	51	5	

PUNTING—Collins (14th NFL)—57 punts for 39.0 avg.; 60 long
INTERCEPTIONS—Fichtner (2nd tie NFL)—8 for 152 yds.; 58 long; 1 TD
PUNT RETURNS—None in Upper NFL Rankings
KICKOFF RETURNS—**Roberts (18th NFL)—20 for 454 yards; 22.7 avg.; 57 long;
0 TD
SCORING—Kelly (6th Tie NFL)—16 TD, 96 Pts.
*High in NFL, 1966
**Will play for New Orleans in 1967.

1966 RESULTS (9-5-0)

38	WASHINGTON	14	6	Pittsburgh	16
20	Green Bay	21	27	PHILA.	7
28	St. Louis	34	14	WASHINGTON	3
28	NEW YORK	7	14	Dallas	26
41	PITTSBURGH	10	49	NEW YORK	40
30	DALLAS	21	21	Philadelphia	33
49	ATLANTA	17	38	ST. LOUIS	10

GAMES WON IN CAPS

1967 SCHEDULE

9-17 DALLAS	11- 5 at Pittsburgh
9-24 at Dallas	11-12 at G.B. (Mil.)
10- 1 at New Orleans	11-19 MINNESOTA
10- 7 PITTSBURGH*	11-26 WASHINGTON
10-15 ST. LOUIS	12- 3 NEW YORK
10-22 CHICAGO	12-10 at St. Louis
10-29 at New York	12-17 at Phila.

HOME GAMES IN CAPS
*Night game

EASTERN CONFERENCE, CENTURY DIVISION

NEW YORK GIANTS

Oct. 8—At New York

10 Columbus Circle
New York, N. Y. 10019

Office Phone: (212) JU 2-7272

Colors: Red, White and Blue

Yankee Stadium Capacity: 64,892

1966 Attendance: 439,905 Average: 62,844

Entered NFL: 1925



COACH SHERMAN QB TARKENTON

STAFF

Coach: Allie Sherman (6 years, 43-37-4)

Assistants: Jim Trimble, Harland Svare,
Ken Kavanaugh, Alex Webster, Jack
Patera, Em Tunnell, Rosey Brown

Trainers: John Dziegiel, John Johnson

Equipment Mgr.: Sid Moret

President: Wellington T. Mara
Gen. Mgr.: Raymond J. Walsh
P. R. Director: Don Smith
Promotions Dir.: Ed Croke
Dir. Player Pers.: Jim Lee Howell
Radio Team: Marty Glickman, Al
DeRogatis
Radio Station: WNEW, 90-station Ivy
Broadcasting Network

1966 STATISTICAL LEADERS

RUSHING									
NFL Rank	Att.	Yds.	Avg.	Long	TD				
Mercein	29	94	3.27	3.5	22	0			
Morrison	31	67	2.75	4.1	20	2			
Jacobs	32	77	2.73	3.5	19	1			
PASSING									
NFL Rank	Att.	Comp.	Pct.	Gain	TD	Long	Int.	Int. Pct.	
Morrall	14	151	71	47.0	1105	7	98t	12	7.9
Wood**	15	170	81	47.6	1142	6	58	13	7.6
RECEIVING									
NFL Rank	No.	Yds.	Avg.	Long	TD				
Jones	15	48	1044	21.8*	98t	8			
Morrison	17TIE	46	724	15.7	49	6			
Thomas	22	43	683	15.9	50	4			

PUNTING—Koy (12th NFL)—49 punts for 39.4 avg.; 55 long
INTERCEPTIONS—Lockhart (7th Tie NFL)—6 for 20 yds.; 14 long; 0 TD
PUNT RETURNS—Lockhart (5th NFL)—17 for 113 yds.; 6.6 avg.; 21 long; 0 TD
KICKOFF RETURNS—Childs (11th NFL)—34 for 855 yds.; 25.1 avg.; 90t long; 1 TD
SCORING—P. Gogolak (16th Tie NFL)—29-31 XP; 16-28 FG; 77 Pts.

*High in NFL, 1966

**Will play for New Orleans in 1967.

1966 RESULTS (1-12-1)

34	Pittsburgh	34	17	St. Louis	30
7	Dallas	52	14	Los Angeles	55
17	Philadelphia	35	16	Atlanta	27
7	Cleveland	28	41	Washington	72
19	St. Louis	24	40	Cleveland	49
13	WASHINGTON	10	28	Pittsburgh	47
3	Philadelphia	31	7	Dallas	17

GAMES WON IN CAPS

1967 SCHEDULE

9-17 at St. Louis	11- 5 at Minnesota
9-24 at Dallas	11-12 at Chicago
10- 1 at Washington	11-19 PITTSBURGH
10- 8 NEW ORLEANS	11-26 PHILA.
10-15 at Pittsburgh	12- 3 at Cleveland
10-22 GREEN BAY	12-10 DETROIT
10-29 CLEVELAND	12-17 ST. LOUIS

HOME GAMES IN CAPS

EASTERN CONFERENCE, CENTURY DIVISION

PITTSBURGH STEELERS

Aug. 19—At Baton Rouge, La.*

Oct. 29—At New Orleans

*Pre-Season Game

139 Sixth St. (Roosevelt Hotel)
Pittsburgh, Pa. 15222

Office Phone: (412) 391-1200

Colors: Black and Gold

Pitt Stadium Capacity: 54,500

1966 Attendance: 249,231 Average: 35,600

Entered NFL: 1933



COACH AUSTIN

QB NELSEN

STAFF

President: Arthur J. Rooney

Gen. Mgr.: Daniel M. Rooney

P. R. Director: Ed Kiely

Promotions Dir.: James Boston

Dir. Player Pers.: Arthur J. Rooney, Jr.

Radio Team: Tom Bender, Jack Fleming

Radio Station: KDKA and 31 on network

Coach: Bill Austin (1 yr., 5-8-1)

Assistants: Lavern Torgeson, Tom

Fletcher, Don Heinrich, Leon

McLaughlin, Hugh (Bones) Taylor

Trainer: Roger McGill

Equipment Mgr.: Ton Parisi, Jack Hart

1966 STATISTICAL LEADERS

RUSHING									
NFL Rank	Att.	Yds.	Avg.	Long	TD				
Asbury	13	169	544	3.2	45	7			
Hoak	41	81	212	2.6	16	1			
Butler	59	46	114	2.5	19	2			
PASSING									
NFL Rank	Att.	Comp.	Pct.	Gain	TD	Long	Int.	Int. Pct.	
R. Smith	12	181	79	43.6	1249	8	84t	12	6.6
Nelson	112	63	56.2	1122	7	68	1	1	0.9
RECEIVING									
NFL Rank	No.	Yds.	Avg.	Long	TD				
Hilton	17TIE	46	603	13.1	32t	4			
Ballman	24TIE	41	663	16.2	79t	5			
Jefferson	37TIE	32	772	24.1	84t	4			

PUNTING—Lambert (4th NFL)—78 punts for 42.1 avg.; 63 long
INTERCEPTIONS—J. Bradshaw (18th tie NFL)—4 for 82 yds.; 28 long; 1 TD
Woodson (18th tie NFL)—4 for 91 yds.; 56t long; 1 TD
Keys (18th tie NFL)—4 for 0 yds.

PUNT RETURNS: None in Upper NFL Rankings
KICKOFF RETURNS—Butler (6th NFL)—17 for 454 yds.; 26.7 avg.; 93t long; 1 TD
SCORING—Clark (5th NFL)—34-34 XP; 21-32 FG; 97 Pts.

1966 RESULTS (5-8-1)

34	New York	34	16	CLEVELAND	6
17	DETROIT	3	30	ST. LOUIS	9
27	Washington	33	7	Dallas	20
10	Washington	24	3	St. Louis	6
10	Cleveland	41	23	Philadelphia	27
14	Philadelphia	31	47	NEW YORK	28
21	Dallas	52	57	ATLANTA	33

GAMES WON IN CAPS

1967 SCHEDULE

9-17 CHICAGO	11- 5 CLEVELAND
9-24 ST. LOUIS	11-12 at St. Louis
10- 1 at Phila.	11-19 at New York
10- 7 at Cleveland*	11-26 MINNESOTA
10-15 NEW YORK	12- 3 at Detroit
10-22 DALLAS	12-10 WASHINGTON
10-29 at New Orlns.	12-17 at Green Bay

HOME GAMES IN CAPS

*Night game

EASTERN CONFERENCE, CENTURY DIVISION

ST. LOUIS CARDINALS

Aug. 12—At Shreveport, La.*

Dec. 3—At St. Louis

*Pre-Season Game

200 Stadium Plaza
St. Louis, Mo. 63102
Office Phone: (314) GA1-0777
Colors: Cardinal Red and White
Circuit Center Busch Memorial Stadium
Capacity: 48,818

1966 Attendance: 317,096 Average: 45,299
Entered NFL: 1921 (Charter)



COACH WINNER



QB JOHNSON

STAFF

President: Charles W. Bidwill, Jr.
Vice-Pres.: William V. Bidwill
P. R. Director: Joe Pollack
Asst. P. R. Dir.: Mrs. Lori Greenstein
Dir. Player Personnel: Abe Stuber
Radio Team: Jay Randolph, Ray Geracy
Radio Station: KMOX

Head Coach: Charley Winner (1 yr. 8-5-1)
Assistants: Chuck Drulis, Fran Polsfoot,
Don Shroyer, Jim Champion, Rick
Forzano, Bob (Red) Miller, Harry
Gilmer
Trainer: Jack Rockwell
Equipment Mgr.: Bill Simmons

1966 STATISTICAL LEADERS

RUSHING	NFL Rank	Att.	Yds.	Avg.	Long	TD
Roland	11	192	695	3.6	50	5
Gault	25	110	370	3.4	23t	1
Crenshaw	26	94	360	3.8	33	0

PASSING	NFL Rank	Att.	Comp.	Pct.	Gain	TD	Long	Int.	Int. Pct.
Johnson	9	205	103	50.2	1334	10	69t	11	5.4
Nofsinger	18	162	68	42.0	799	2	49	8	4.9

RECEIVING	NFL Rank	No.	Yds.	Avg.	Long	TD
Smith	19TIE	45	810	18.0	69t	3
Conrad	33TIE	34	388	11.4	40t	2
Gambrell	56	24	409	17.0	49	5

PUNTING—Smith (15th NFL)—47 punts for 37.9 avg.; 56 long, 1 blocked
INTERCEPTIONS—Wilson (1st, NFL)—10* for 180 yds.; 91t long; 2 TD*
PUNT RETURNS—Roland (1st NFL)—20 for 221 yds.; 11.1* Avg; 86t* long; 1 TD
KICKOFF RETURNS—Shivers (2nd NFL)—27 for 762 yds.; 28.2 avg.; 94t* long;
SCORING—Bakken (6th tie NFL)—27-28 XP; 23-40 FG; 96 Pts.

*High in NFL, 1966

1966 RESULTS (8-5-1)

16	PHILA.	13	24	CHICAGO	17
23	WASHINGTON	7	20	NEW YORK	17
34	CLEVELAND	28	9	Pittsburgh	30
41	PHILA.	10	6	PITTSBURGH	3
24	NEW YORK	19	17	Dallas	31
10	Dallas	10	10	Atlanta	16
20	Washington	26	10	Cleveland	38

GAMES WON IN CAPS

1967 SCHEDULE

9-17	NEW YORK	11- 5	at Washington
9-24	at Pittsburgh	11-12	PITTSBURGH
10- 1	DETROIT	11-19	at Chicago
10- 8	at Minnesota	11-23	at Dallas
10-15	at Cleveland	12- 3	NEW ORLNS.
10-22	PHILA.	12-10	CLEVELAND
10-30	GREEN BAY*	12-17	at New York

HOME GAMES IN CAPS

*Night game

WESTERN CONFERENCE, COASTAL DIVISION

ATLANTA FALCONS

Sept. 9—At New Orleans*

Nov. 26—At New Orleans

*Pre-Season Game

521 Capitol Ave., S. W.
Atlanta, Ga. 30312
Office Phone: (404) 688-8684
Colors: Red, Black, White, Old Gold
Atlanta Stadium Capacity: 58,850
1966 Attendance: 395,679 Average: 56,526
Entered NFL: 1966



COACH HECKER



QB JOHNSON

STAFF

President: Rankin Mc. Smith
Gen. Mgr.: Frank E. Wall
P. R. Director: Jan Van Duser
Dir. Player Personnel: Gene Cronin
Radio Team: Jack Hurst, one to be named
Radio Station: WQXI and 70 on network

Head Coach: Norb Hecker (1 yr., 3-11)
Assistants: Lew Carpenter, Bill
Crutchfield, Brad Ecklund, Bob Fry,
Hal Herring, John Symank
Trainer: Clint Huoy
Equipment Mgr.: Whitey Zimmerman

1966 STATISTICAL LEADERS

RUSHING	NFL Rank	Att.	Yds.	Avg.	Long	TD
Coffey	9	199	722	3.6	37	4
Wheelwright	18	121	458	3.8	65	3
Randy Johnson	54	35	142	4.1	21	4

PASSING	NFL Rank	Att.	Comp.	Pct.	Gain	TD	Long	Int.	Int. Pct.
Randy Johnson	17	295	129	43.7	1795	12	53t	21	7.1
Claridge		70	40	57.1	471	2	62t	2	2.9

RECEIVING	NFL Rank	No.	Yds.	Avg.	Long	TD
Hawkins	21	44	661	15.0	42	2
Martin	45TIE	29	330	11.4	35	0
Burke	49TIE	28	348	12.4	45	1

PUNTING—Lothridge (11th NFL)—73 punts for 40.7 avg.; 60 long.
INTERCEPTIONS—Richardson (9th tie NFL)—5 for 68 yds.; 20 long, 0 TD
PUNT RETURNS—None in Upper NFL Rankings
KICKOFF RETURNS—Smith (14th NFL)—43* for 1013* yds.; 23.6 avg.; 30 long, 0 TD
SCORING: Kirouac (32nd NFL)—19-24 XP; 9-18 FG; 46 Pts.

*High in NFL, 1966

1966 RESULTS (3-11-0)

14	Los Angeles	19	17	Cleveland	49
10	Philadelphia	23	7	Baltimore	19
10	Detroit	28	27	NEW YORK	16
14	Dallas	47	6	Chicago	23
20	Washington	33	20	MINNESOTA	13
7	San Francisco	44	16	ST. LOUIS	10
3	Green Bay	56	33	Pittsburgh	57

GAMES WON IN CAPS

1967 SCHEDULE

9-17	at Baltimore	11- 5	at Dallas
9-24	at San Fran.	11-12	BALTIMORE
10- 1	at G.B. (Mil.)	11-19	LOS ANG.
10- 8	PHILA.	11-26	at New Orlns.
10-15	WASHINGTON	12- 3	at Los Angeles
12-22	at Detroit	12-10	SAN FRAN.
10-29	MINNESOTA	12-17	CHICAGO

HOME GAMES IN CAPS

WESTERN CONFERENCE, COASTAL DIVISION

BALTIMORE COLTS

Dec. 10—At Baltimore

600 N. Howard St.
Baltimore, Md. 21201
Office Phone: (301) 685-6400
Colors: Blue and White
Memorial Stadium Capacity: 60,238
1966 Attendance: 418,143 Average: 59,735
Entered NFL: 1950
(out 2 yrs., returned in 1953)



COACH SHULA



QB UNITAS

STAFF

President: Carroll D. Rosenbloom
Gen. Mgr: Harry Hulmes
P. R. Director: Jim Walker
Dir. Player Personnel: Upton Bell
Radio Team: Frank Messer, Bill O'Donnell
Radio Station: WCBM
Head Coach: Don Shula (4 yrs., 39-16-1)
Assistants: Don McCafferty, John Sandusky, Bill Arnsparger, Dick Bielski, Chuck Noll
Trainer: Edward Block
Equipment Mgr.: Fred Schubach

1966 STATISTICAL LEADERS

RUSHING	NFL Rank	Att.	Yds.	Avg.	Long	TD
Lorick	14	143	524	3.7	41	3
Hill	21	104	395	3.8	14	0
Matte	23	86	381	4.4	30	0

PASSING	NFL Rank	Att.	Comp.	Pct.	Gain	TD	Long	Int.	Int. Pct.
Unitas	5	348	195	56.0	2748	22	89t	24	6.9
Cuozzo**		50	26	52.0	424	4	69	2	4.0

RECEIVING	NFL Rank	No.	Yds.	Avg.	Long	TD
Berry	7TIE	56	786	14.0	40t	7
Mackey	12TIE	50	829	16.6	89t	9
Orr	28TIE	37	618	16.7	61t	3

PUNTING—Lee (1st NFL)—49 punts for 45.6* avg.; 64 long
INTERCEPTIONS—Boyd (7th tie NFL)—6 for 114 yds.; 37t long, 1 TD
PUNT RETURNS—Haymond (3rd NFL)—40* for 347* yds.; 8.7 avg.; 64 long; 0 TD
KICKOFF RETURNS—Moore (10th NFL)—18 for 453 yds.; 25.2 avg.; 54 long; 0 TD
SCORING—Michaels (4th NFL)—35-36 XP; 21-39 FG; 98 Pts.

*High in NFL, 1966
**Will play for New Orleans in 1967

1966 RESULTS (9-5-0)

3	Green Bay	24	37	WASHINGTON	10
38	MINNESOTA	23	19	ATLANTA	7
36	SAN. FRAN.	14	14	Detroit	20
17	Chicago	27	7	Los Angeles	23
45	DETROIT	14	21	CHICAGO	16
20	MINNESOTA	17	10	Green Bay	14
17	L. ANGELES	3	30	SAN FRAN.	14

GAMES WON IN CAPS

1967 SCHEDULE

9-17	ATLANTA	11-5	GREEN BAY
9-24	at Philadel.	11-12	at Atlanta
10-1	SAN FRAN.	11-19	DETROIT
10-8	at Chicago	11-26	at San Fran.
10-15	L. ANGELES	12-3	DALLAS
10-22	at Minnesota	12-10	NEW ORL.
10-29	at Washington	12-17	at L. Angeles

HOME GAMES IN CAPS

WESTERN CONFERENCE, COASTAL DIVISION

LOS ANGELES RAMS

Aug. 2—At Anaheim, Calif.*

Sept. 17—At New Orleans

*Pre-Season Game

10271 West Pico Blvd.
Los Angeles, Calif. 90064
Office Phone: (213) 277-4700
Colors: Royal Blue and White
Memorial Coliseum Capacity 72,000
1966 Attendance: 348,432 Average: 49,776
Entered NFL: 1937
(Moved to L. A., 1946)



COACH ALLEN



QB GABRIEL

STAFF

President: Gen. Mgr.: Daniel F. Reeves
Asst. to Pres.: Elroy Hirsch
P.R. Director: Jack Teele
Asst. P.R. Dir.: Jerry Wilcox
Dir. Player Pers.: Johnny Sanders
Radio Team: Dick Enberg, Bill Granholm
Radio Station: KMPC and 19 on network
Head Coach: George Allen (1 yr., 8-6)
Assistants: Ray Prochaska, Ted Marchbroda, Tom Catlin, Marion Campbell, Howard Schnellenberger, Joe Sullivan
Trainers: George Menefee, Jerry Rhea
Equipment Mgr.: Bill Granholm

1966 STATISTICAL LEADERS

RUSHING	NFL Rank	Att.	Yds.	Avg.	Long	TD
Bass	3	248	1090	4.4	50	8
Moore	33	104	272	2.6	18	1
Gabriel	49	52	176	3.4	14	3

PASSING	NFL Rank	Att.	Comp.	Pct.	Gain	TD	Long	Int.	Int. Pct.
Gabriel	7	397	217	54.7	2540	10	84t	16	4.0
Munson		50	30	60.0	284	2	25	1	2.0

RECEIVING	NFL Rank	No.	Yds.	Avg.	Long	TD
McDonald	9	55	714	13.0	62	2
Snow	33TIE	34	634	18.6	84t	3
Bass	41TIE	31	274	8.8	40	0

PUNTING—Kilgore (2nd NFL)—71 punts for 42.8 avg.; 58 long
INTERCEPTIONS: Williams (2nd tie NFL)—8 for 97 yds., 32t long, 1 TD
PUNT RETURNS: Sitger (4th NFL)—33 for 259 yds., 7.8 avg.; 49 long, 0 TD
KICKOFF RETURNS: Williams (4th NFL)—15 for 420 yds., 28.0 avg.; 81 long, 0 TD
SCORING: Gossett (1st NFL)—29-29 XP; 28*-49* FG; 113* Pts.

*High in NFL, 1966

1966 RESULTS (8-6-0)

19	ATLANTA	14	3	Baltimore	17
31	CHICAGO	17	13	San Fran.	21
13	Green Bay	24	55	NEW YORK	14
34	SAN FRAN.	3	21	MINNESOTA	6
14	DETROIT	7	23	BALTIMORE	7
7	Minnesota	35	23	DETROIT	3
10	Chicago	17	23	Green Bay	27

GAMES WON IN CAPS

1967 SCHEDULE

9-17	at New Orlns	11-5	at San Fran.
9-22	MINNESOTA*	11-12	PHILA.
10-1	at Dallas	11-19	at Atlanta
10-8	SAN FRAN.	11-23	at Detroit
10-15	at Baltimore	12-3	ATLANTA
10-22	WASHINGTON	12-9	GREEN BAY
10-29	at Chicago	12-17	BALTIMORE

HOME GAMES IN CAPS
*Night game

WESTERN CONFERENCE, COASTAL DIVISION

SAN FRANCISCO 49'ers

Aug. 26—At Portland, Ore.*

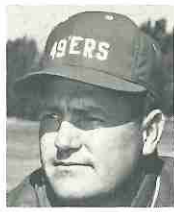
Oct. 22—At San Francisco

*Pre-Season Game

1255 Post St., Suite 300
San Francisco, Calif. 94109
Office Phone: (415) 771-1149

Colors: Red and Gold

Kezar Stadium Capacity: 59,000
1966 Attendance: 249,887 Average: 35,698
Entered NFL: 1950



COACH
CHRISTIANSEN



QB BRODIE

STAFF

President: Louis G. Spadia
Gen. Mgr.: Jack White
P. R. Director: George McFadden
Dir. Player Pers.: Lynn O. Waldorf
Radio Team: Lon Simmons, Russ Hodges,
and Hugh McElhenny
Radio Station: KSFO and 16 on network

Coach: Jack Christiansen (4 yrs., 19-31-3)
Assistants: Bill Johnson, Billy Wilson,
Y. A. Tittle, Dick Voris, Jim
Shofner, Dan Colchico
Trainer: Lincoln Kimura
Equipment Mgr.: Chico Norton

1966 STATISTICAL LEADERS

RUSHING						
	NFL Rank	Att.	Yds.	Avg.	Long	TD
Willard	5	191	763	4.0	49	5
Crow	16	121	477	3.9	31	1
Kopay	43	47	204	4.3	32t	1

PASSING						
	NFL Rank	Att.	Comp.	Pct.	Gain	TD
Brodie	8	427	232	54.3	2810	16
Mira		53	22	41.5	284	5

RECEIVING						
	NFL Rank	No.	Yds.	Avg.	Long	TD
Parks	3	66	974	14.8	65t	5
Casey	12TIE	50	669	13.4	32	1
Willard	23	42	351	8.4	62	2

PUNTING—Davis (6th NFL)—63 punts for 41.4 avg.; 60 long
INTERCEPTIONS—Alexander (18th Tie NFL)—4 for 73 yds.; 55 long; 0 TD
J. Johnson (18th Tie NFL)—4 for 57 yds.; 35t long; 1 TD
PUNT RETURNS—Alexander (6th NFL)—30 for 198 yds.; 6.6 avg.; 21 long; 0 TD
KICKOFF RETURNS—Alexander (7th NFL)—37 for 984 yds.; 26.6 avg.; 56 long, 0 TD
SCORING—Davis (12th NFL)—38-39 XP; 16-31 FG; 86 Pts.

1966 RESULTS (6-6-2)

20	Minnesota	20	21	L. ANGELES	13
14	Baltimore	36	30	Chicago	30
3	L. Angeles	34	34	Philadelphia	35
21	GREEN BAY	20	41	DETROIT	14
44	ATLANTA	7	7	Green Bay	20
27	DETROIT	24	41	CHICAGO	14
3	Minnesota	28	14	Baltimore	30

GAMES WON IN CAPS

1967 SCHEDULE

9-17 at Minnesota	11- 5 L. ANGELES
9-24 ATLANTA	11-12 at Washington
10- 1 at Baltimore	11-19 at Green Bay
10- 8 at L. Angeles	11-26 BALTIMORE
10-15 at Philadel.	12- 3 CHICAGO
10-22 N. ORLEANS	12-10 at Atlanta
10-29 DETROIT	12-17 DALLAS

HOME GAMES IN CAPS

WESTERN CONFERENCE, CENTRAL DIVISION

CHICAGO BEARS

Bears and Saints
Do Not Play in 1967

173 West Madison St.
Chicago, Ill. 60626

Office Phone: (312) 332-5400

Colors: Orange, Navy Blue and White
Wrigley Field Capacity: 46,200
1966 Attendance: 327,589 Average: 46,798
Entered NFL: 1920 (Charter)



COACH HALAS



QB CONCANNON

STAFF

Chairman of Board: George S. Halas
Gen. Mgr.: George S. Halas Jr.
P. R. Director: Dan T. Desmond
Dir. Player Personnel: Babe Dimancheff
Radio Team: Jack Brickhouse,
Irv Kupcinet
Radio Station: WGN

Head Coach: George S. Halas,
(40th year, 314-136-30)
Assistants: Luke Johnson, Phil
Handler, Jim Dooley, Abe Gibron,
Ed Cody, Babe Dimancheff, Chuck
Cherundolo, Sid Luckman, Paddy
Driscoll
Trainer: Ed Rozy
Equipment Mgr.: Bill Martel

1966 STATISTICAL LEADERS

RUSHING						
	NFL Rank	Att.	Yds.	Avg.	Long	TD
Sayers	1	229	1231*	5.4	58t	8
Bull	30	100	318	3.2	13	0
Kurek	47	52	179	3.4	12	1

PASSING						
	NFL Rank	Att.	Comp.	Pct.	Gain	TD
Bukich	13	309	147	47.6	1858	10
Wade		21	9	42.9	79	0

RECEIVING						
	NFL Rank	No.	Yds.	Avg.	Long	TD
Sayers	33TIE	34	447	13.1	80t	2
Ditka**	37TIE	32	378	11.8	30	2
Jones	49TIE	28	504	18.0	80t	5

PUNTING—Green (5th NFL)—80* for 42.0 avg.; 69 long
INTERCEPTIONS—Petitbon (18th Tie NFL)—4 for 34 yds.; 20 long, 0 TD
PUNT RETURNS—Arnet (10th NFL)—15 for 58 yards, 3.9 avg.; 20 long; 0 TD
KICKOFF RETURNS—Sayers (1st NFL)—23 for 718 yds.; 31.2* avg.; 93t long; 2* TD
SCORING—Leclerc (13th Tie NFL)—24-25XP; 18-30 FG; 78 Pts.

*High in NFL, 1966

**Will play for Philadelphia in 1967.

1966 RESULTS (5-8-1)

3	Detroit	14	10	Detroit	10
17	L. Angeles	31	30	San Fran.	30
13	MINNESOTA	10	6	Green Bay	13
27	BALTIMORE	17	23	ATLANTA	6
0	Green Bay	17	16	Baltimore	21
17	L. ANGELES	10	14	San Fran.	41
17	St. Louis	24	41	MINNESOTA	28

GAMES WON IN CAPS

1967 SCHEDULE

9-17 at Pittsburgh	11- 5 at Detroit
9-24 at Green Bay	11-12 NEW YORK
10- 1 at Minnesota	11-19 ST. LOUIS
10- 8 BALTIMORE	11-26 GREEN BAY
10-15 DETROIT	12- 3 at San Fran.
10-22 at Cleveland	12-10 MINNESOTA
10-29 L. ANGELES	12-17 at Atlanta

HOME GAMES IN CAPS

WESTERN CONFERENCE, CENTRAL DIVISION

DETROIT LIONS

Lions and Saints
Do Not Play in 1967

1401 Michigan Ave.
Detroit, Mich. 48216
Office Phone: (313) 965-6644
Colors: Honolulu Blue and Silver
Tiger Stadium Capacity: 54,582
1966 Attendance: 358,181 Average: 51,168
Entered NFL: 1934



COACH SCHMIDT



QB PLUM

STAFF

President: W. C. Ford
Gen. Mgr.: Russ Thomas
P. R. Director: Lyall Smith
Asst. P. R. Dir.: Elliott Trumbull
Dir. Player Pers.: Carl Brettschneider
Radio Team: Bob Reynolds, one to be named
Radio Station: WJR and 32 on network

Head Coach: Joe Schmidt (1st year)
Assistants: Jim David, Jim Martin,
Chuck Knox, John North,
Bill McPeak
Trainer: Kent Falb
Equipment Mgr.: Roy (Friday) Macklem

1966 STATISTICAL LEADERS

RUSHING		NFL Rank	Att.	Yds.	Avg.	Long	TD
Nowatzke	15	151	512	3.4	21	6	
Marsh	19	134	433	3.2	27	3	
Sweetan	40	34	219	6.4	34	1	

PASSING		NFL Rank	Att.	Comp.	Pct.	Gain	TD	Long	Int.	Int. Pct.
Plum	10	146	82	56.2	943	4	63	13	8.9	
Sweetan	11	309	157	50.8	1809	4	99t*	14	4.5	

RECEIVING		NFL Rank	No.	Yds.	Avg.	Long	TD
Studstill	2	67	1266*	18.9	99t*	5	
Nowatzke	10TIE	54	316	5.9	25	1	
Cogdill	16	47	411	8.7	21	1	

PUNTING—Studstill (8th NFL)—72 punts for 41.1 avg.; 66 long
INTERCEPTIONS—Lucci (9th Tie NFL)—5 for 118 yds.; 63t long; 1 TD
Maher (9th Tie NFL)—5 for 90 yds.; 56 long; 0 TD
PUNT RETURNS—Vaughn (2nd NFL)—18 for 179 yds.; 9.9 avg.; 63 long; 0 TD
KICKOFF RETURNS—Vaughn (8th NFL)—23 for 595 yds.; 25.9 avg.; 63 long; 0 TD
SCORING—Yeprman (26th NFL)—11-11 XP; 13-22 FG; 50 Pts.

1966 RESULTS (4-9-1)

14	CHICAGO	3	7	Green Bay	31
3	Pittsburgh	17	10	Chicago	10
28	ATLANTA	10	32	MINNESOTA	31
14	Green Bay	23	20	BALTIMORE	14
7	Los Angeles	14	14	San Fran.	41
14	Baltimore	45	3	Los Angeles	23
24	San Fran.	27	16	Minnesota	28

GAMES WON IN CAPS

1967 SCHEDULE

9-17	at Green Bay	11- 5	CHICAGO
9-24	CLEVELAND	11-12	at Minnesota
10- 1	at St. Louis	11-19	at Baltimore
10- 8	GREEN BAY	11-23	L. ANGELES
10-15	at Chicago	12- 3	PITTSBURGH
10-22	ATLANTA	12-10	at New York
10-29	at San Fran.	12-17	MINNESOTA

HOME GAMES IN CAPS

WESTERN CONFERENCE, CENTRAL DIVISION

GREEN BAY PACKERS

Packers and Saints
Do Not Play in 1967

1265 Highland Ave.
Green Bay, Wisc. 54305
Office Phone: (414) 494-2351
Colors: Green and Gold
Lambeau Stadium (Green Bay)
Capacity: 50,861
Milwaukee County Stadium
Capacity: 47,094
1966 Attendance, G. B.: 254,305
Average: 50,861
1966 Attendance, Mil.: 240,134
Average: 48,027
Entered NFL: 1919 (Charter)



COACH LOMBARDI



QB STARR

STAFF

President: Dominic Olejniczak
Gen. Mgr.: Vince Lombardi
P. R. Director: Chuck Lane
Dir. Player Pers.: Pat Pepller
Radio Team: Ted Moore, Blaine Walsh
Radio Station: WTMJ, Milwaukee

Head Coach: Vince Lombardi
(8th yr., 123-35-3)
Assistants: Phil Bengston, Jerry Burns,
Dave Hanner, Tom McCormick,
Bob Schnelker, Ray Wietacha
Trainer: Bud Jordensen
Equipment Mgr.: Dad Braisher

1966 STATISTICAL LEADERS

RUSHING		NFL Rank	Att.	Yds.	Avg.	Long	TD
Taylor**	10	204	705	3.5	19	4	
Pitts	22	115	393	3.4	20	7	
Hornung**	44	76	200	2.6	9	2	

PASSING		NFL Rank	Att.	Comp.	Pct.	Gain	TD	Long	Int.	Int. Pct.
Starr	1	251	156	62.2*	2257	14	83t	3*	*1.2	
Bratkowski		64	36	56.3	569	4	74	2	3.1	

RECEIVING		NFL Rank	No.	Yds.	Avg.	Long	TD
Taylor**	24TIE	41	331	8.1	21	2	
Dale	28TIE	37	876	23.7	83t	7	
Fleming	41TIE	31	361	11.6	53t	2	

PUNTING—Chandler (10th NFL)—60 punts for 40.9 avg.; 58 long
INTERCEPTIONS—Jeter (9th NFL)—5 for 142 yds.; 75t long; 2 TD
PUNT RETURNS—Wood (11th NFL)—22 for 82 yds.; 3.7 avg.; 7 long; 0 TD
KICKOFF RETURNS—Anderson (15th NFL)—23 for 533 yds.; 23.2 avg.; 61 long; 0 TD
SCORING—Chandler (16th TIE NFL)—41-43 XP; 12-28 FG; 77 Pts.

**Will play for New Orleans in 1967.

1966 RESULTS (12-2-0)

24	BALTIMORE	3	31	DETROIT	7
21	CLEVELAND	20	17	Minnesota	20
24	L. ANGELES	13	13	CHICAGO	6
23	DETROIT	14	28	MINNESOTA	16
20	San Fran.	21	20	SAN FRAN.	7
17	CHICAGO	0	14	BALTIMORE	10
56	ATLANTA	3	27	L. ANGELES	23

GAMES WON IN CAPS

1967 SCHEDULE

9-17	DETROIT	11- 5	at Baltimore
9-24	CHICAGO	11-12	CLEVELAND†
10- 1	ATLANTA†	11-19	SAN FRAN.
10- 8	at Detroit	11-26	at Chicago
10-15	MINNESOTA†	12- 3	at Minnesota
10-22	at New York	12- 9	at L. Angeles
10-30	at St. Louis*	12-17	PITTSBURGH

HOME GAMES IN CAPS

* Night game † Played in Milwaukee

WESTERN CONFERENCE, CENTRAL DIVISION

MINNESOTA VIKINGS

Saints and Vikings
Do Not Play in 1967

7809 Southtown Center
Bloomington, Minn. 55431
Office Phone: (612) 866-3601
Colors: Purple, White, Gold Trim
Metropolitan Stadium Capacity 47,426
1966 Attendance: 315,837 Average: 45,119
Entered NFL: 1961



COACH GRANT



QB VANDER KELEN

STAFF

President: Max Winter
Gen. Mgr.: James E. Finks
P. R. Director: Bill McGrane
Dir. Player Pres.: Jerry Reichow
Radio Team: Ray Christensen, Paul Giel
Radio Station: WCCO and 25 on network

Head Coach: Harry (Bud) Grant (1st yr.)
Assistants: Jim Carr, Bob Hollway,
Bus Mertes, John Michels, one to
be named
Trainer: Fred Zamberletti
Equipment Mgr.: Jim Eason

1966 STATISTICAL LEADERS

RUSHING	NFL Rank	Att.	Yds.	Avg.	Long	TD
Brown	4	251*	829	3.3	33t	6
Tarkenton**	24	62	376	6.1	28	4
Osborn	27	87	344	4.0	25	1

PASSING	NFL Rank	Att.	Comp.	Pct.	Gain	TD	Long	Int.	Int. Pct.
Tarkenton**	6	358	192	53.6	2561	17	68t	16	4.5
Berry		37	13	35.1	215	1	52t	5	13.5

RECEIVING	NFL Rank	No.	Yds.	Avg.	Long	TD
Flatley	12TIE	50	777	15.5	41	3
Brown	28TIE	37	359	9.7	56	0
Phillips	37TIE	32	554	17.3	68t	3

PUNTING—Walden (9th NFL)—60 punts for 41.1 avg.; 70* long
INTERCEPTIONS—Hackbart (9th Tie NFL)—5 for 73 yds., 4t long, 1 TD
PUNT RETURNS—None in upper NFL Rankings
KICKOFF RETURNS—Fitzgerald (21st NFL)—14 for 301 yds., 21.5 avg.; 30 long, 0 TD
SCORING—Cox (11th NFL)—34-34 XP, 18-33 FG; 88 Pts.

*High in NFL, 1966

**Will play for New York in 1967.

1966 RESULTS (4-9-1)

20	San Fran.	20	20	GREEN BAY	17
23	Baltimore	38	31	Detroit	32
17	Dallas	28	6	Los Ang.	21
10	Chicago	13	16	Green Bay	28
35	LOS ANG.	7	13	Atlanta	20
17	Baltimore	20	28	DETROIT	16
28	SAN FRAN.	3	28	Chicago	41

GAMES WON IN CAPS

1967 SCHEDULE

9-17	SAN FRAN.	11- 5	NEW YORK
9-22	Los Ang.*	11-12	DETROIT
10- 1	CHICAGO	11-19	at Cleve.
10- 8	ST. LOUIS	11-26	at Pitts.
10-15	at G.B. (Mil.)	12- 3	GREEN BAY
10-22	BALTIMORE	12-10	at Chicago
10-29	at Atlanta	12-17	at Detroit

HOME GAMES IN CAPS

*Night game

THE SAINTS ON TELEVISION, 1967

The Saints will appear before the cameras of the Columbia Broadcasting System in every one of their 14 regular-season games in 1967. Road games will be telecast on nine stations of the Saints' home-area network, including WWL-TV in New Orleans. Home games will be telecast by stations outside a 75-mile radius around New Orleans and to the home network area of the visiting team.

Don Criqui will handle the play-by-play of Saints' games on television with Norm Van Brocklin doing the color.

The Saints' TV network:

WKRG-TV	Mobile, Alabama	WWL-TV	New Orleans, Louisiana
WAFB-TV	Baton Rouge, Louisiana	KSLS-TV	Shreveport, Louisiana
KLFY-TV	Lafayette, Louisiana	WCBI-TV	Columbus, Mississippi
KNOE-TV	Monroe, Louisiana	WJTV	Jackson, Mississippi
	WTOK-TV		Meridian, Mississippi

THE SAINTS ON RADIO, 1967

All 1967 New Orleans Saints games, both home and away and pre-season and regular season, will be broadcast on a multi-station network with WWL in New Orleans the originating station. Al Wester, veteran sportscaster, will handle the play-by-play and Maury Magill will do the color.

The Saints radio network (as of July 7, 1967 — more stations may be added before the start of the season):

WKRG	Mobile, Ala.	WWL	New Orleans, La.
KELD	El Dorado, Ark.	KPBC	Port Sulphur, La.
KZNG	Hot Springs, Ark.	WFFF	Columbia, Miss.
KROF	Abbeville, La.	WABG	Greenwood, Miss.
WJBO	Baton Rouge, La.	WBKH	Hattiesburg, Miss.
WIKC	Bogalusa, La.	WJDX	Jackson, Miss.
KXKW	Lafayette, La.	WAML	Laurel, Miss.
KAOK	Lake Charles, La.	WMOX	Meridian, Miss.
KNOE	Monroe, La.	WNAT	Natchez, Miss.
KMRC	Morgan City, La.	WTUP	Tupelo, Miss.
KANE	New Iberia, La.	WVIM	Vicksburg, Miss.

SAINTS' INFORMATION GUIDE, 1967

This information guide has been prepared for the convenience of National Football League newspaper, radio and television personnel. If more detailed information, pictures or other publicity materials are desired, please contact Donald R. Smith, Director of Public Relations, 944 St. Charles Avenue, New Orleans, Louisiana 70130, or call (504) 524-1421. The public relations assistant is Miss Pat Cross and she may be contacted at the same address and phone number.

WORKING PRESS INFORMATION

Working Press Credentials

Seats in the Tulane Stadium press box for Saints' games in 1967 will be limited to working press ONLY and will be restricted to daily newspapers, wire services and leading radio and television representatives performing a specific reporting task at the game for either the Saints or their opponents.

Requests for working press accommodations should be made to Donald R. Smith, Director of Public Relations, New Orleans Saints, 944 St. Charles Ave., New Orleans, La., telephone (504) 524-1421. Except in obvious cases where a season-long coverage is assured, working press accommodations will be issued on a single-game basis only.

Working press credentials will also serve to admit you to the dressing rooms after the games once the prescribed "cooling-off" period established by the coaches has elapsed.

Complimentary tickets for non-working press are very limited but will be distributed by the Public Relations Department.

Photographers

Photographers will be issued special field passes. Except in unusual circumstances, caption writers will not be permitted on the field and will not be issued credentials.

Photographers' credentials will be issued to daily newspapers, wire services and television stations; special assignment or free-lance photographers will be screened very closely. All photographers must stay behind the restraining lines and they will not be permitted to shoot pictures in front of the bench of either team.

Photographers' credentials should be requested through Don Smith.

Western Union

Requests for Western Union circuits should be made to Terry O. Young, Western Union sales representative, 334 Carondelet St., New Orleans, La., 70130, or by phoning (504) JA 5-9696.

Press Box Services

The Saints' statistical crew will supply the following information during each home game: play-by-play and field chart after each quarter, halftime team and individual significant statistics, final team and individual statistics, scoring summary and participation listing, ball possession and drive chart for both teams and defensive statistics.

Spotters for radio and television stations will be furnished on request; requests should be received no later than Wednesday before each game. Each radio and television station using spotters will be responsible for paying that spotter a reasonable fee for his services.

Sandwiches and refreshments will also be available in the Tulane press box before each game and at halftime.

NEW ORLEANS SAINTS PRESS OUTLETS

The following press outlets are the major Louisiana news media that cover the New Orleans Saints. In addition to those listed below, numerous press, radio and television outlets in Mississippi and Alabama will provide daily coverage of the NFL's newest entry.

NEWSPAPERS, WIRE SERVICES

Name	Outlet	Address	Telephone
Bob Roesler	New Orleans Times-Picayune	601 North St.	524-2411
Ed Staton	New Orleans Times-Picayune	601 North St.	524-2411
Nate Cohen	New Orleans Times-Picayune	601 North St.	524-2411
Harry Martinez	New Orleans States-Item	601 North St.	524-2411
Art Burke	New Orleans States-Item	601 North St.	524-2411
Peter Finney	New Orleans States-Item	601 North St.	524-2411
George Sweeney	New Orleans States-Item	601 North St.	524-2411
Nat Belloni	New Orleans States-Item	601 North St.	524-2411
Ben Thomas	Associated Press	601 North St.	529-5501
Carroll Trosclair	United Press International	520 Royal St.	524-8351
Jim Hall	Louisiana Weekly	640 S. Rampart St.	522-5696
Ed Davenport	Clarion Herald	523 Natchez St.	525-2194
Bill Carter	Alexandria Daily Town Talk	Alexandria, La.	442-1331
Bud Montet	Morning Advocate	Baton Rouge, La.	348-0151
Joe Planas	Morning Advocate	Baton Rouge, La.	348-0151
John Musemache	Morning Advocate	Baton Rouge, La.	348-0151
Dan Hardesty	State-Times	Baton Rouge, La.	348-0151
Mike Cook	State-Times	Baton Rouge, La.	348-0151
Charles Lenox	Daily Advertiser	Lafayette, La.	CE 5-8511
Sports Editor	American Press	Lake Charles, La.	439-2781
Paul Martin	News Star & World	Monroe, La.	322-5161
Butch Muir	News Star & World	Monroe, La.	322-5161
Jim Mathis	News Star & World	Monroe, La.	322-5161
Jimmy Bullock	Shreveport Journal	Shreveport, La.	424-0373
Bill McIntyre	Shreveport Times	Shreveport, La.	424-0373

RADIO, TELEVISION

Hap Glaudi	WWL-TV	1024 N. Rampart	529-4444
Woody Van Dyke	WWL-TV	1024 N. Rampart	529-4444
Wayne Mack	WDSU-TV	520 Royal St.	524-4371
Bruce Miller	WDSU-TV	520 Royal St.	524-4371
Buddy Diliberto	WVUE-TV	1418 Cleveland	525-9011
Al Wester	WWL Radio	Roosevelt Hotel	525-2194
Champ Clark	WBOK Radio	505 Baronne	524-5363
Bruce Miller	WDSU Radio	520 Royal	524-4371
Fred Franklin	WNOE Radio	529 Bienville St.	529-1212
Bill Beal	WSMB Radio	Maison Blanche Bldg	523-5921
John Reed	WTIX Radio	Paris Rd.	271-3464
Cy Simon	WYLD Radio	P. O. Box 19124	822-1945
Ed Marten	KALB-TV	Alexandria, La.	445-2456
John Ferguson	WBRZ-TV	Baton Rouge, La.	348-1491
Bob Searce	WAFB-TV	Baton Rouge, La.	344-8571
Jim Erwin	WIBR Radio	Baton Rouge, La.	348-6716

SAINTS ON THE ROAD

(Team and Publicist's Itinerary)

ANAHEIM (Wed., Aug. 2, 8 p.m.) — Arrive Tuesday by bus from San Diego; stay in the Grand Hotel (Phone: AC 714 772-7777); Return to training camp immediately after game.
Publicist: Arrives Sat., July 29.

SHREVEPORT, La. (Sat., Aug. 12, 8 p.m.) — Arrive Friday by air charter from San Diego, stay at The Shreveporter (Phone AC 318 635-0544). Return to training camp after game by air charter.
Publicist: Arrives Tuesday.

BATON ROUGE, La. (Sat., Aug. 19, 8 p.m.) — Arrive Friday by air charter, stay at Belmont Motor Hotel (Phone AC 504 357-8612). Return to training camp after game by air charter.
Publicist: Arrives Tuesday.

PORTLAND, Ore. (Sat., Aug. 26, 8:30 p.m.) — Arrive Friday by air charter from San Diego, stay at the Portland Hilton (Phone AC 503 CA 6-1611). Return to New Orleans after the game. (This game marks end of San Diego training camp. Team will train remaining weeks in Covington, La.)
Publicist: Arrives Tuesday.

CHARLESTON, S. C. (Sat., Sept. 2, 8 p.m.) — Arrives Friday by air charter from New Orleans, stay at The Charleston Inn (Phone AC 803 723-7461). Return to New Orleans by air charter after game.
Publicist: Arrives Tuesday.

NEW YORK (Sun., Oct. 8, 1:30 p.m.) — Arrive Saturday by air charter from New Orleans, stay at Park Sheraton (Phone AC 212 CI 7-8000). Return by air charter after game.
Publicist: Arrives Tuesday.

DALLAS (Sun., Oct. 15, 1:30 p.m.) — Arrive Saturday by air charter from New Orleans, stay at The Hilton Inn (Phone AC 214 827-4100). Return by air charter after game.
Publicist: Arrives Tuesday.

SAN FRANCISCO (Sun., Oct. 22, 1 p.m.) — Arrive Saturday by air charter from New Orleans, stay at Rickey's (Phone AC 415 327-8000). Return by air charter after game.
Publicist: Arrives Tuesday.

PHILADELPHIA (Sun., Nov. 19, 1:15 p.m.) — Arrive Saturday by air charter, stay at Sheraton Philadelphia (Phone AC 215 LO 8-3300). Return by air charter after game.
Publicist: Arrives Tuesday.

ST. LOUIS (Sun., Dec. 3, 1 p.m.) — Arrive Saturday by air charter, stay at Bel Aire East (Phone AC 314 MA 1-7900). Return by air charter after game.
Publicist: Arrives Tuesday.

BALTIMORE (Sun., Dec. 10, 2 p.m.) — Arrive Saturday by air charter, stay at Holiday Inn (Phone AC 301 685-3500). Return after game by air charter.
Publicist: Arrives Tuesday.

WASHINGTON, D. C. (Sun., Dec. 17, 1:15 p.m.) — Arrive Saturday by air charter. Stay at Dupont Plaza (Phone AC 202 483-6000). Return by charter after game.
Publicist: Arrives Tuesday.

(Arrangements are subject to change)

First down. Five to go.



When the Saints go marching in, be in that number. Or tune in for the play-by-play on radio. Every game is brought to you live by Falstaff. The choicest product of the brewers' art. Everywhere!

FALSTAFF BREWING CORP., ST. LOUIS, MISSOURI · OMAHA · NEW ORLEANS · SAN JOSE · FT. WAYNE · GALVESTON · EL PASO · CRANSTON, R.I.



944 ST. CHARLES
NEW ORLEANS, LA.
AC 504 - 524-1421