

LOGO SLICK SEATTLE SEAHAWKS

COLOR GUIDE

Primary Mark



Primary Logotype



Primary Mark with Logotype



GUIDE FOR A DARK BACKGROUND

The white outline must never be removed from the logo, even when it is not visible on a light background.

Primary Mark



Primary Logotype



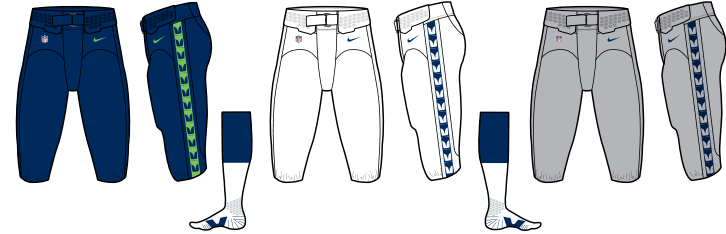
Primary Mark with Logotype



UNIFORM GUIDE



Third Jersey



Pants can be interchangeable with jerseys.

Helmets



Helmets



SEATTLE SEAHAWKS LOGO SLICK

The color and grayscale guides shown here are for reference only. When printing with process colors, use only the process color specifications listed on this slick.

Note: The one-color art is for limited use only; prior approval is required from NFL Properties.

These pages contain graphic representations of the teams official colors, trademarked helmet, marks (logos), logotypes, and uniforms. They are not meant for reproduction, but as a guide for NFL Properties' licensees to use for color and grayscale reference. For assistance in correct usage of the NFL trademarks, contact:

Quality Control, NFL Properties LLC, 345 Park Avenue, New York, NY 10154, 212.450.2771

All commercial applications of these materials are subject to written approval from NFL Properties' Consumer Products Quality Control Department prior to marketing.

NOTICE

The designs depicted herein are registered trademarks of the National Football League and its Member Clubs. Reproduction is limited strictly to usages authorized to license from NFL Properties. No reproduction may deviate in any manner whatsoever from specifications set forth herein.

COLORS File usage	PANTONE Spot printing	C/M/Y/K 4c printing	R/G/B Video	GRAYSCALE B/W printing	HTML (HEX) Web	TEXTILE Garments	COATS Embroidery	MADEIRA Embroidery	A&E/RA Embroidery
Navy	PMS 289 C	100/65/0/60	0/21/50	100%	002244	NFL Dark Navy 020519 (custom)	B7520	1043/1643	Oceanside Blue-59774
Green	PMS 368 C	57/0/84/0	105/190/40	25%	69BE28	PMS 15-0146 TC	B5384	1049/1950	Action Green-59768
Gray	PMS 429C	5/0/0/30	155/161/162	30%	A5ACAF	NFL Grey 2012 (custom)	B9355	1212/1718	Dolphin Grey-59758
Gray <small>for pattern color on numbers & helmet only</small>	PMS 430 C	5/0/0/45	129/138/143	60%	818A8F	PMS 17-4402 TC	N/A	N/A	N/A
Blue <small>for pattern color on numbers only</small>	PMS 654 C	100/67/0/41	1/51/105	100%	002C5F	PMS 19-4044 TC	43HTB	1242/1742	Songbird Blue-59817
White	no ink <small>(or use Opaque White)</small>	0/0/0/0	255/255/255	0%	FFFFFF	PMS 11-0601 TC	B1719	1005/1801	Ultra Bright White-58263

The colors shown on this page are not intended to match the PANTONE® Color Standards. For the PANTONE Color Standards, refer to current editions of the PANTONE Color Publications. PANTONE® is a registered trademark of Pantone, Inc. ©2012 NFL Properties, Inc. All rights reserved.

GRAYSCALE GUIDE

Grayscale versions of the logo should be printed using screens of black.

Primary Mark



Primary Logotype

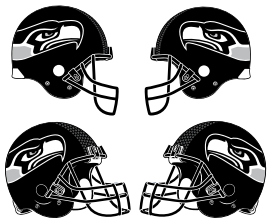
SEATTLE
SEAHAWKS

SEATTLE
SEAHAWKS

Primary Mark with Logotype



Helmets



BLACK & WHITE AND ONE-COLOR GUIDES

The versions below are different from the grayscale versions or the color mechanical art, and should ONLY be employed for NFLP-approved one-color uses, such as etching, embossing, and tonal applications.

TWO-COLOR BLACK & WHITE

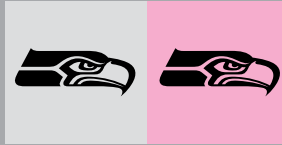


TWO-COLOR TONAL

For licensee use only.



ONE-COLOR (for light backgrounds)



ONE-COLOR (for dark backgrounds)



SEATTLE
SEAHAWKS

SEATTLE
SEAHAWKS

SEATTLE
SEAHAWKS

SEATTLE
SEAHAWKS

SEATTLE
SEAHAWKS

SEAHAWKS

SEATTLE
SEAHAWKS

SEAHAWKS

SEATTLE
SEAHAWKS

SEAHAWKS

SEATTLE
SEAHAWKS

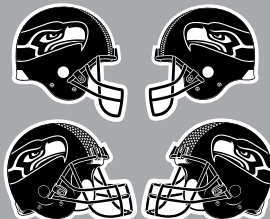
SEAHAWKS

SEATTLE
SEAHAWKS

SEAHAWKS

SEATTLE
SEAHAWKS

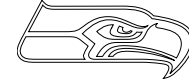
SEAHAWKS



MECHANICAL ART

For use as reproduction art. The keyline does not print.

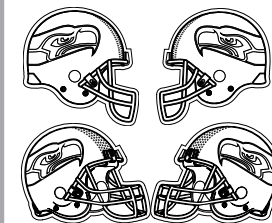
Some logos include a white outline for visibility against a dark background. In those cases, use surrounding keyline art to create the outline. The keyline does not print.



SEATTLE
SEAHAWKS

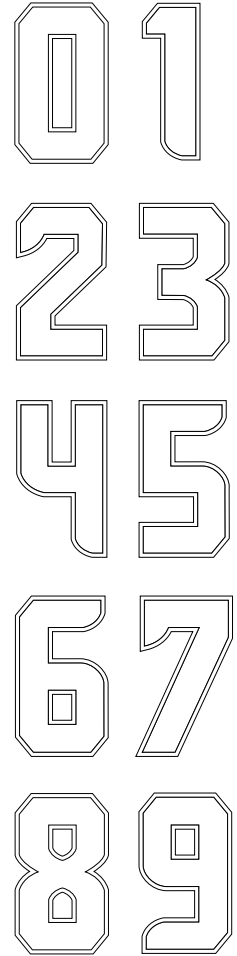
SEATTLE
SEAHAWKS

SEAHAWKS



MECHANICAL ART

For replicating jersey numerals. The keyline does not print.



COLOR GUIDE

Secondary Logotypes



GUIDE FOR A DARK BACKGROUND

The white outline must never be removed from the logo, even when it is not visible on a light background.



GRAYSCALE GUIDE

Grayscale versions of the logo should be printed using screens of black.



ONE-COLOR GUIDES

The versions below are different from the grayscale versions or the color mechanical art, and should ONLY be employed for NFLP-approved one-color uses, such as etching, embossing, and tonal applications.

ONE-COLOR
BLACK



ONE-COLOR
WHITE



MECHANICAL ART

For use as reproduction art. The keyline does not print.

Some logos include a white outline for visibility against a dark background. In those cases, use surrounding keyline art to create the outline. The keyline does not print.

